

INTRODUCING ALL-NEW SUPEROXALLOY ABRASIVES

10X ENGINEERED
MATERIALS

MANUS
ABRASIVE SYSTEMS INC.

What are superoxalloy abrasives?

Superoxalloy

(soo-per-ox-uh-loi)

An engineered alloy of oxide minerals created through highly controlled formulation and tempering (high heat + rapid cooling). The process creates non-crystalline (amorphous) particles that resist breakage under stress of high-speed mechanical impact.

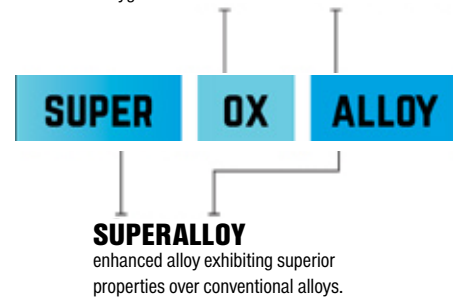
[From metallurgy/minerology: superalloy + oxide]

OXIDE

hard, strong mineral compound consisting of elements bonded with oxygen.

ALLOY

integrated solid made of two or more elements. Mechanical properties differ and often exceed those of its components.



Delivering breakthrough performance



Ultra Safe

- NO beryllium, free silica or heavy metals
- Extremely low dust
- Sustainable



Ultra high-performance

- Removes difficult coatings
- Performs multiple steps in one
- Delays rust bloom



Ultra low-consumption

- Less abrasive required per job
- Perform more work per pot
- Lower surface prep cost per sq. ft.

Which superoxalloy abrasive is right for the job?

Choose KinetiX superoxalloy abrasives for high-volume blasting jobs

KinetiX
HIGH-PRODUCTION GRADES

- Large production and maintenance jobs
- Shipyards
- Bridges
- Tanks
- Pipelines

Choose EpiX superoxalloy abrasives for demanding manufacturing applications

EpiX
PRECISION GRADES

- Fabrication, device and equipment manufacturing
- Specialty parts and coatings



HIGH-PRODUCTION GRADES

Solves big, complex production challenges



Need for speed in volume:

- Big projects with tight, rigid production timetables
- Work schedules with no time allowance for post-blast cleaning or rework
- Settings where poor worker visibility caused by abrasive dust reduces speed (and quality)
- Critical assets back online faster
- Eliminate hand-tooling ahead of blasting



Quality & results:

- Uniform surface profile across expansive areas
- Environments where low visibility from abrasive dust could compromise craftsmanship
- Ultra-clean jobsite required
- Delayed rust bloom and low-to-no embedment
- Tackle more jobs per year through increased productivity



Difficult-to-remove coatings:

- Remove thick coatings, elastomerics, multi-layers, two-part epoxies, fusion bonded, polyurea, tank liners, marine coatings and more



Reducing total job cost:

- Jobs of sufficient scale—where increased speed and reduced abrasive consumption can deliver payback in reduced cost per sq. ft.
- Reduce rework from embedment, rust bloom and coating failure



Safety:

- Exceptional worker safety
- Exceptional environmental safety: air and water quality - Can be harmlessly left on the ground or in water (TCLP)

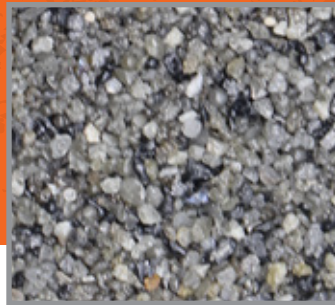
KinetiX Grades



KINETIX 10/20 - 10/40

Surface profile: 4.0 - 6.0 mil

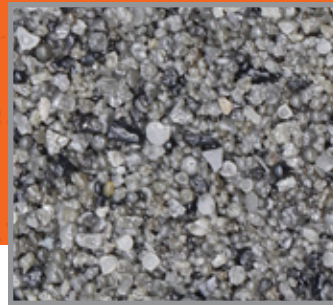
Extra-coarse abrasive with extra-deep profile, ideal for removing thick or hard coatings.



KINETIX 20/40

Surface profile: 2.5 - 4.0 mil

Coarse abrasive with deep profile suitable for thick or hard coatings. Removes corrosion, coatings, oil, dirt and grease.



KINETIX 20/70

Surface profile: 2.5 - 3.5 mil

Efficient, all-purpose abrasive with medium profile. Great for removing corrosion, coatings and mill scale.



KINETIX 40/70

Surface profile: 2.0 - 3.0 mil

General-purpose abrasive ideal for medium-to-thick coatings. Excellent option for stone cutting and engraving.

KinetiX on the job...

KinetiX superoxalloy abrasive: Removes 200+ mil of paint layers, eliminating baking and scraping.

THE CHALLENGE:

• A painting contractor tested 10X superoxalloy abrasive on paint racks with 250 mils of numerous coating layers from multiple paint jobs. No abrasive in their shop — including garnet, staurolite or steel grit — could be used to remove this coating. Before 10X, the racks were baked or hand scraped to restore them for reuse.

THE 10X BREAKTHROUGH:

• Operators were stunned to see that KinetiX 20/40 immediately cut through the coating and left a beautifully profiled white metal finish.



KinteX Packaging Options



- Bulk loads
- 4,000 LB. SuperSack
- 2,000 LB. SuperSack
- 100 LB. bags
- 50 LB. bags



PRECISION GRADES

Solves “pursuit of excellence” challenges

REPLACES ALUMINUM OXIDE, SILICON CARBIDES AND CERAMICS AT A LOWER COST.



When surface quality matters:

- Exacting surface quality, profile, appearance and uniformity requirements
- Zero tolerance for iron contamination or embedment
- Ultra-low blasting abrasive dust



Efficient, precision coating removal:

- Remove thick, tough powder coatings, elastomerics, multi-layers, two-part epoxies—with no burn off or scraping



Strict environmental, health and safety blasting requirements:

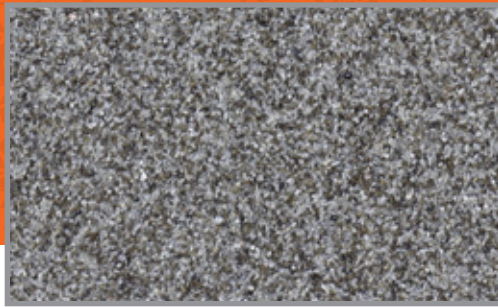
- Clean blasting abrasives
- Unmatched worker safety
 - No free silica or crystalline content
 - No heavy metals
 - No beryllium
- Unparalleled environmental safety: air and water quality - Can be harmlessly left on the ground or in water (TCLP)



High-efficiency manufacturing and fabrication processes:

- Speed: reduce time required for surface preparation
- Produce clean, finished surface in one step, with no required secondary finishing, cleaning or polishing
- Reduce blasting media consumption: contain and reuse abrasives
- Reduce/eliminate throughput disruption caused by rework

EpiX grades



EpiX EP (Enhanced Profile)

Enhanced, uniform profile for extra hard or tough coatings, including mill scale removal.



EpiX MP (Medium Profile)

Uniform, medium profile. Removes extra-hard or tough coating, oil, dirt and grease, leaving an SP 5 finish.

EpiX on the job...

Superoxalloy vs. powder coat: Removing tough coatings in a matter of seconds

THE CHALLENGE:

• A painting contractor was hired to clean, repair and recoat specialized hanger hooks coated with a thick and extremely hardened powder coat. They were forced to bake and hand-scrape the hooks to remove the coating because abrasive blasting was not effective. Even silicon carbide could barely dent the coating after minutes of blasting in a small area.

THE 10X BREAKTHROUGH:

• As seen in the photos, 10X superoxalloy abrasive immediately cut through the thick powder coating and left a clean, profiled surface ready for recoating. The entire hook was cleaned and restored in 19 seconds.



EpiX Packaging Options



- 2,000 LB. SuperSack
- 100 LB. bags
- 50 LB. bags

KinteX Ordering Information

STOCK NO.	GRIT SIZE	SURFACE PROFILE	PACKAGING	REUSABILITY @100PSI	BULK DENSITY
KX1000	10/20 Mesh	4.0 - 6.0 mil	Bulk Load	2 times	87-92 lb/ft3
KX1002	10/20 Mesh	4.0 - 6.0 mil	4,000 lb SuperSack	2 times	87-92 lb/ft3
KX1003	10/20 Mesh	4.0 - 6.0 mil	2,000 lb SuperSack	2 times	87-92 lb/ft3
KX1004	10/20 Mesh	4.0 - 6.0 mil	100 lb Bags	2 times	87-92 lb/ft3
KX1008	10/20 Mesh	4.0 - 6.0 mil	50 lb Bags	2 times	87-92 lb/ft3
KX1010	10/40 Mesh	4.0 - 6.0 mil	Bulk Load	2 times	88-93 lb/ft3
KX1012	10/40 Mesh	4.0 - 6.0 mil	4,000 lb SuperSack	2 times	88-93 lb/ft3
KX1013	10/40 Mesh	4.0 - 6.0 mil	2,000 lb SuperSack	2 times	88-93 lb/ft3
KX1014	10/40 Mesh	4.0 - 6.0 mil	100 lb Bags	2 times	88-93 lb/ft3
KX1018	10/40 Mesh	4.0 - 6.0 mil	50 lb Bags	2 times	88-93 lb/ft3
KX1020	20/40 Mesh	2.5 - 4.0 mil	Bulk Load	2-4 times	90-95 lb/ft3
KX1022	20/40 Mesh	2.5 - 4.0 mil	4,000 lb SuperSack	2-4 times	90-95 lb/ft3
KX1023	20/40 Mesh	2.5 - 4.0 mil	2,000 lb SuperSack	2-4 times	90-95 lb/ft3
KX1024	20/40 Mesh	2.5 - 4.0 mil	100 lb Bags	2-4 times	90-95 lb/ft3
KX1028	20/40 Mesh	2.5 - 4.0 mil	50 lb Bags	2-4 times	90-95 lb/ft3
KX1030	20/70 Mesh	2.5 - 3.5 mil	Bulk Load	2-6 times	93-103 lb/ft3
KX1032	20/70 Mesh	2.5 - 3.5 mil	4,000 lb SuperSack	2-6 times	93-103 lb/ft3
KX1033	20/70 Mesh	2.5 - 3.5 mil	2,000 lb SuperSack	2-6 times	93-103 lb/ft3
KX1034	20/70 Mesh	2.5 - 3.5 mil	100 lb Bags	2-6 times	93-103 lb/ft3
KX1038	20/70 Mesh	2.5 - 3.5 mil	50 lb Bags	2-6 times	93-103 lb/ft3
KX1040	40/70 Mesh	2.0 - 3.0 mil	Bulk Load	4-6 times	95-105 lb/ft3
KX1042	40/70 Mesh	2.0 - 3.0 mil	4,000 lb SuperSack	4-6 times	95-105 lb/ft3
KX1043	40/70 Mesh	2.0 - 3.0 mil	2,000 lb SuperSack	4-6 times	95-105 lb/ft3
KX1044	40/70 Mesh	2.0 - 3.0 mil	100 lb Bags	4-6 times	95-105 lb/ft3
KX1048	40/70 Mesh	2.0 - 3.0 mil	50 lb Bags	4-6 times	95-105 lb/ft3

EpiX EP / MP Ordering Information

STOCK NO.	PROFILE	PACKAGING	REUSABILITY @100PSI	BULK DENSITY
KX1052	EpiX EP - Enhanced	2,000 lb SuperSack	4 - 8 times	100-110 lb/ft3
KX1054	EpiX EP - Enhanced	100 lb Bags	4 - 8 times	100-110 lb/ft3
KX1058	EpiX EP - Enhanced	50 lb Bags	4 - 8 times	100-110 lb/ft3
KX1062	EpiX MP - Medium	2,000 lb SuperSack	6 - 12 times	100-110 lb/ft3
KX1064	EpiX MP - Medium	100 lb Bags	6 - 12 times	100-110 lb/ft3
KX1068	EpiX MP - Medium	50 lb Bags	6 - 12 times	100-110 lb/ft3

EDMONTON, AB
 1040 - 78 Avenue
 Edmonton, AB T6P 1L7
 Ph. (780) 468-2588
 Fax. (780) 465-7317

CALGARY, AB
 #118 3442 - 118 Avenue
 Calgary, AB T2Z 3X1
 Ph. (403) 279-1924
 Fax. (403) 236-3249

VANCOUVER, BC
 Unit #101A-81 Golden Drive
 Coquitlam, BC V3K 6R2
 Ph. (604) 464-6979
 Fax. (604) 464-3396

WINNIPEG, MB
 88 De Baets Street
 Winnipeg, Manitoba R2J 3S9
 Ph. (204) 256-3324
 Fax. (204) 257-6901

HAMILTON, ON
 500 Sherman Ave. N.
 Hamilton, ON L8N 3N9
 Ph. (905) 890-5837
 Fax. (905) 890-6143