



STREET SCENE (NO.1)



STREET SCENE (NO.2)



STREET SCENE (NO.3)

REFER TO APPENDICES FOR MORE INFORMATION ON MATERIALS.

SITE WIDE, MATERIALS PALETTE - BROCKHILLS LANE

BRICK		CREST OLD SAXON BLEND		AAB HAMBLE BLEND	RENDER		WEBER PRAL.M MONOCOUCHE [SCRAPED FINISH]
		AAB BLECHINGLEY BLEND [ALTERNATIVE]		WIENERBERGER DAKOTA (OLDE ESSEX) [ALTERNATIVE]			MORTAR - REMIX NATURAL 2002 [ALL BRICKWORK]
		WIENERBERGER KANSAS RED MULTI [ALTERNATIVE]		FORTERRA OAKTHORPE RED MULTI [ALTERNATIVE]			EDILIANS 17 x 27 PHALEMPIN VOLCANE
ROOF TILES		EDILIANS DOUBLE HP 20 HUGEUNOT SLATE [OPTION 1]		EDILIANS DOUBLE HP 20 HUGEUNOT BURNT RED	TILE HANGING		HARDIE PLANK TIMBER BARK
		EDILIANS BEAUVOISE 20 HUGEUNOT ARDOISE [ALTERNATIVE]		EDILIANS BEAUVOISE 20 HUGEUNOT FLAMME RUSTIQUE [ALTERNATIVE]			HARDIE PLANK MONTERY TAUPE [ALTERNATIVE]

DRAWING KEY



* PLOT ROOF TILE COLOUR CHANGE: 21, 22, 26, 27, 38, 39, 44, 45, 52, 53, 55, 58, 62, 71-74, 90, 91, 97, 98, 107, 108, 101, 102, 123, 124, 127, 128, 129, 152, 153, 155, 156, & 164

B	21/11/2025	SECOND ISSUE, CHANGES CLOURED RED.
A	20/01/2025	FIRST ISSUE.
REV	DATE	DESCRIPTION

PLAN TITLE

MATERIALS PLAN

SCALE: NTS PLAN NUMBER: 20117 MATERIALS PLAN REV: B

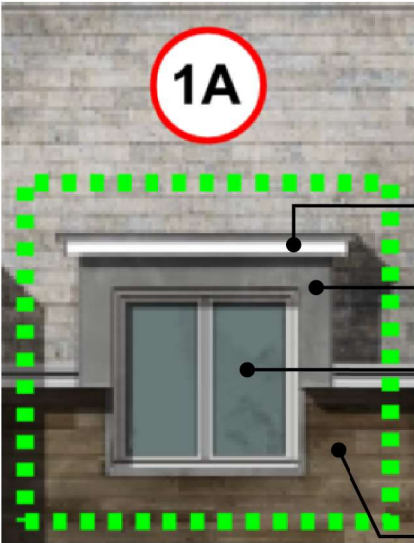
SITE: BROCKHILLS LANE, NEW MILTON



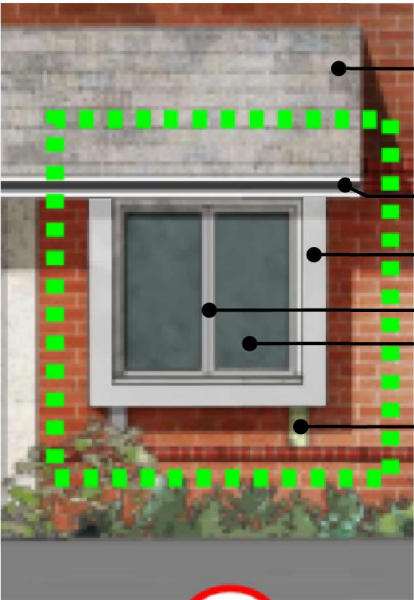
PENNYFARTHING
Builders of Quality Homes

MATERIALS - BROCKHILLS LANE

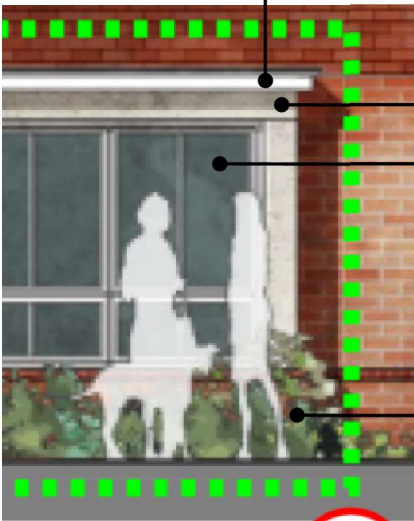
APPENDIX A



WINDOW AND FLAT ROOF DORMER



BOX WINDOW FINISH



BAY WINDOW FINISH

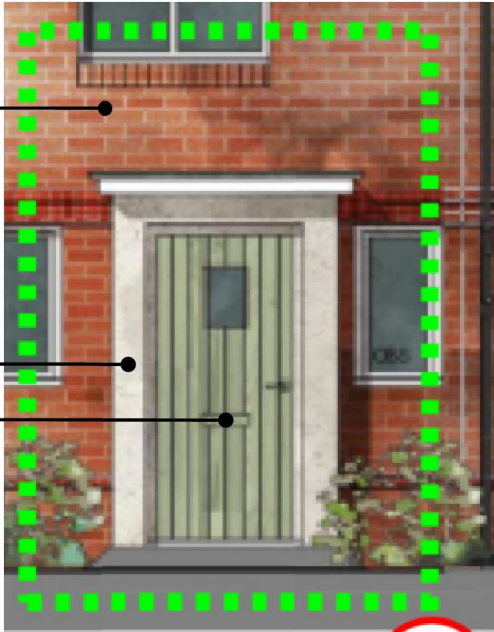


BAY WINDOW FINISH

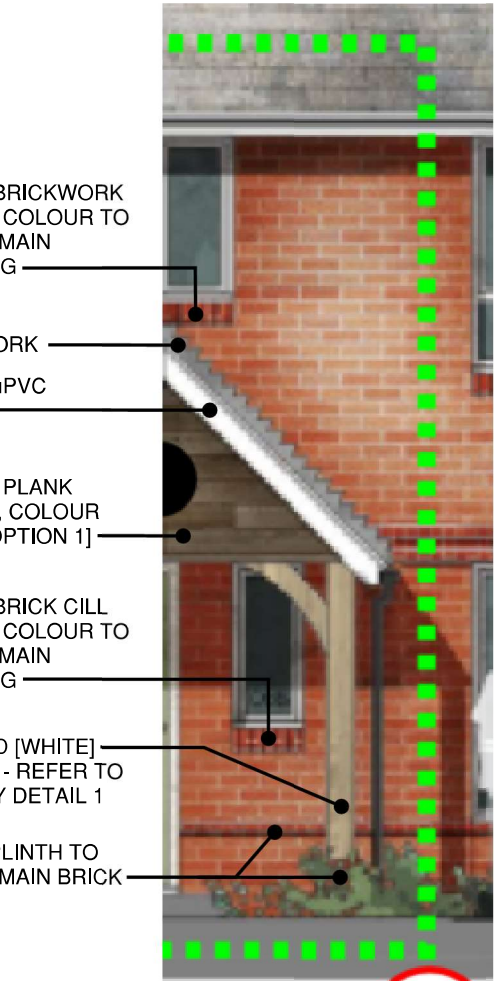
- WHITE FASCIA AND SOFFIT
- GREY FINISH/ CLADED BOARD TO MATCH MAIN ELEVATION
- REFER TO DETAIL REF. PFC_SD_WIN01 B FOR SITE WIDE FENSTRATION DESIGN
- WINDOW COLOUR RAL 7001 OR SIMILAR APPROVED
- HARDIE PLANK TIMBER, COLOUR BARK [OPTION 1]

- ROOF FINISH TO MATCH MAIN ROOF - REFER TO DRAWING REF. CANOPY DETAIL 2
- WHITE FASCIA AND SOFFIT, BLACK RWP AND GUTTER
- WHITE uPVC WINDOW SURROUND
- WINDOW COLOUR RAL 7001
- REFER TO DETAIL REF. PFC_SD_WIN01 B FOR SITE WIDE FENSTRATION DESIGN
- WHITE GALLOW BRACKET

- WHITE FASCIA AND SOFFIT
- WHITE uPVC WINDOW SURROUND
- REFER TO DETAIL REF. PFC_SD_WIN01 B FOR SITE WIDE FENSTRATION DESIGN
- LOW LEVEL BRICKWORK TO MATCH MAIN HOUSE



DOOR SURROUND



PORCH & WINDOW CILL

AAB HAMBLE BLEND / CREST OLD SAXON BLEND SUBJECT TO LOCATION. ALTERNATE BRICKS PROPOSED AND SUBJECT TO AVAILABILITY

PAINTED TIMBER/ WHITE uPVC DOOR SURROUND

DOOR COLOUR INDICATIVE

FLUSH BRICKWORK DETAIL, COLOUR TO MATCH MAIN BUILDING

LEADWORK

WHITE uPVC FASCIA

HARDIE PLANK TIMBER, COLOUR BARK [OPTION 1]

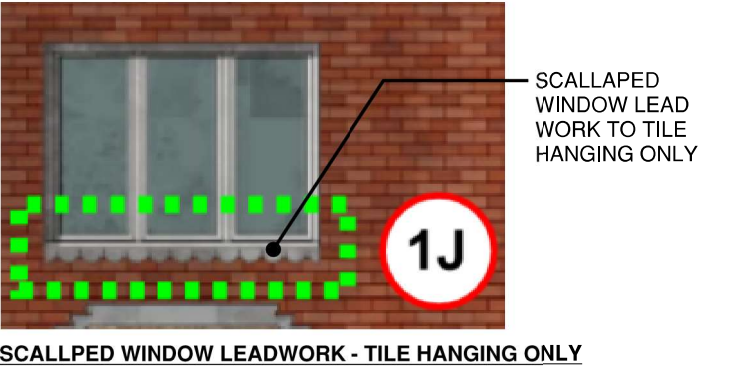
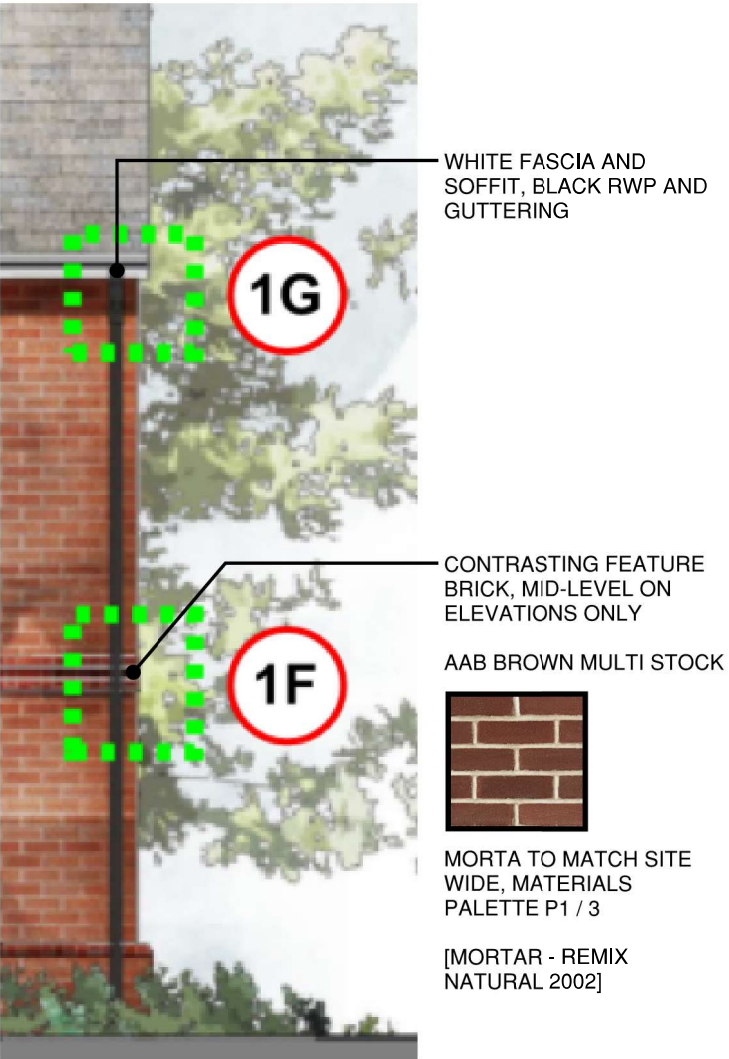
FLUSH BRICK CILL DETAIL, COLOUR TO MATCH MAIN BUILDING

PAINTED [WHITE] TIMBER - REFER TO CANOPY DETAIL 1 REV A

BRICK PLINTH TO MATCH MAIN BRICK

MATERIALS - BROCKHILLS LANE

APPENDIX A



SCALLPED WINDOW LEADWORK - TILE HANGING ONLY

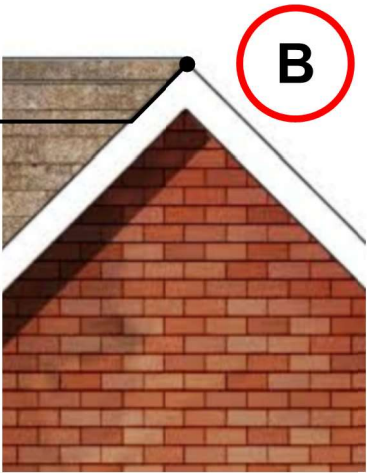
WEBER PRAL.M MONOCOUCHE [SCRAPED FINISH]



FEATURE RENDER WINDOW SURROUND

REFER TO DETAIL REF. PFC_SD_RFE01 A.

MATERIAL FINISH TO MATCH MAIN ROOF

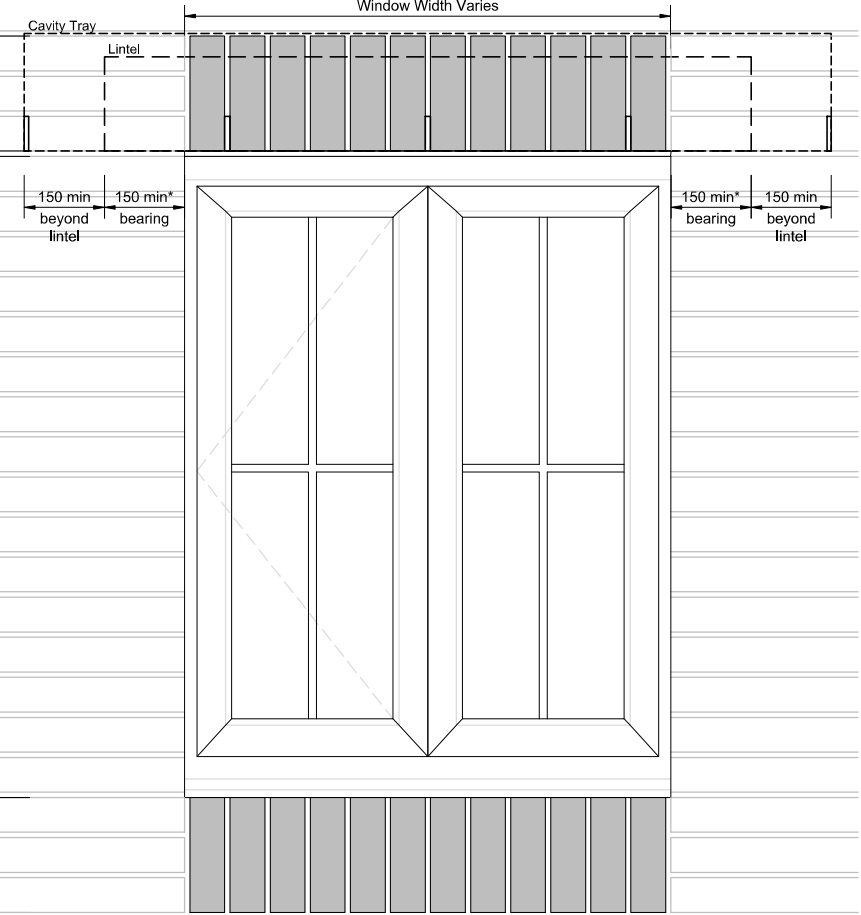


RIDGE DETAIL AND MATERIAL

All plasterboard including finishes, jointing method and installation instructions to be installed in accordance with Pennyfarthing Technical Specification and Manufactures instructions to achieve the necessary fire resistance

* Ensure a full block is used under the lintel bearing in accordance with the NHBC guidelines (Clause 6.1.12) along with a minimum bearing for the lintel of 100mm up to 1.2m spans and 150mm over 1.2m spans

Lintel and cavity tray shown dashed for indicative purposes, ensure cavity tray extends minimum 150mm beyond lintel and turned up at next available perpend. Weep holes @ max. 450mm c/c (Min 2, no per opening equally spaced)



Elevation

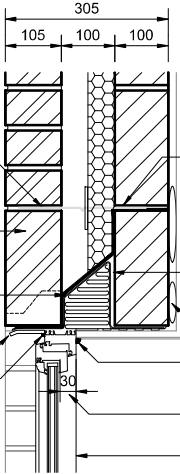
Wall ties @ 450mm vertical and 900mm horizontal centers.

Brick Soldier course to window head with Manthorpe G950 (or similar approved) weepholes @ 450mm c/c (min 2no.)

Min 140mm high Cavity Tray

Upvc cap over exposed lintel.

Mastic sealant between window frame and lintel.



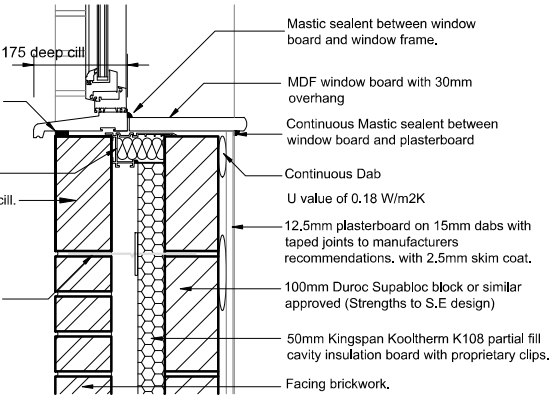
Head Detail

Mastic sealant between window and facing brickwork

Insulated cavity closer with minimum thermal resistance path of 0.038 W/m²K

Brick Soldier course to window cill.

Wall ties @ 450mm vertical and 900mm horizontal centers.



Cill Detail

Type 2 Wall ties or similar approved @ 900mm horizontal centres and 450mm vertical centres, with insulation retaining clip.

External wall U value, ref to construction specification

12.5mm plasterboard on 15mm dabs with taped joints to manufacturers recommendations, with 2.5mm skim coat.

100mm Duroc Supabloc block or similar approved (Strengths to S.E design)

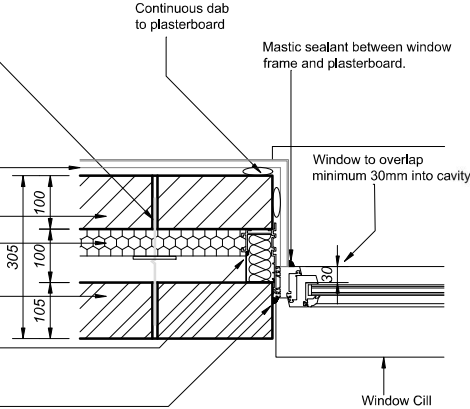
50mm Kingspan Kooltherm K108 partial fill cavity insulation board with proprietary clips.

Facing brickwork

Insulated cavity closer with minimum thermal resistance path of 0.038 m² K/W

Mastic sealant between window frame and brickwork jamb

Jamb Detail



WINDOW COLOUR RAL 7001 OR SIMILAR APPROVED.

BRICKWORK HEADER/ CILL TO MATCH MAIN BRICK.

B	20.01.2025	FIRST ISSUE.
REV	DATE	DESCRIPTION

PLAN TITLE

PFC_SD_WIN01

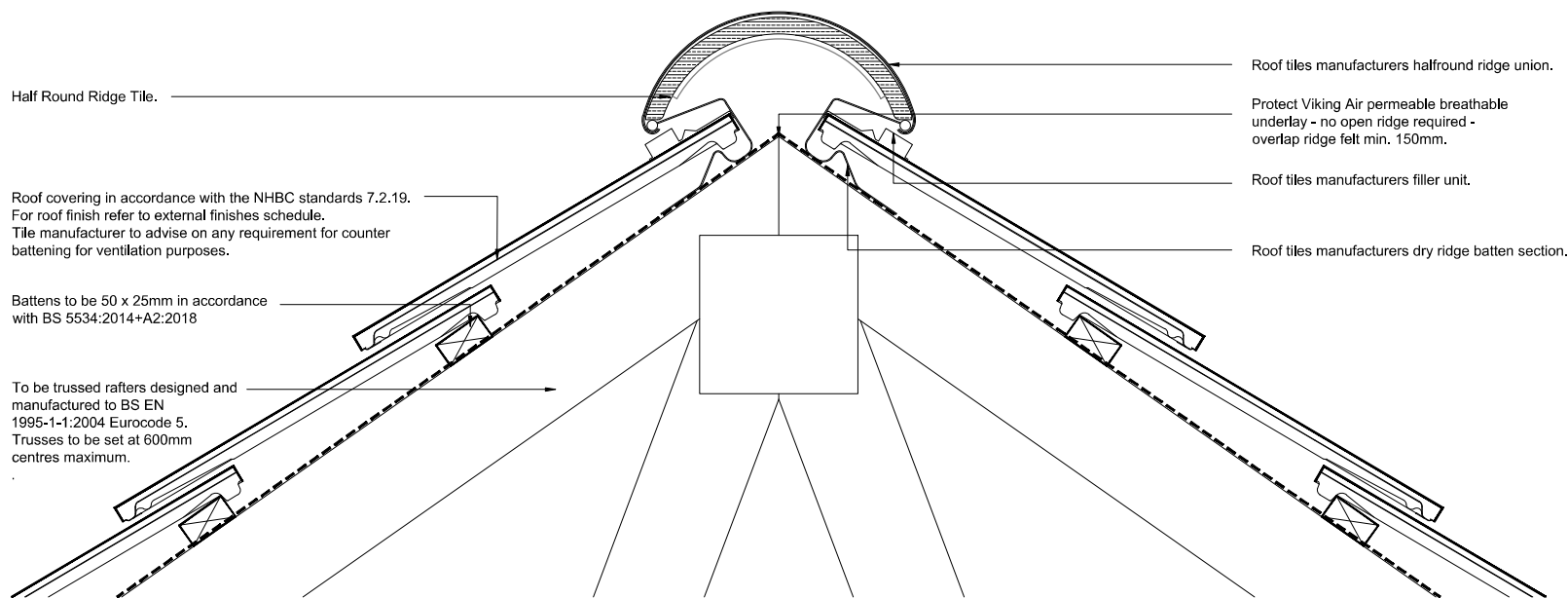
SCALE	PLAN NUMBER	REV
NTS	20117 MATERIALS_PLAN	B

SITE


**BROCKHILLS LANE,
NEW MILTON**

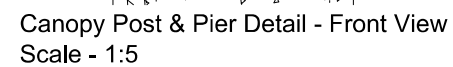
PENNYFARTHING
Builders of Quality Homes

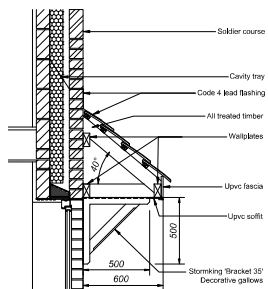
Note: Refer to Structural Engineer/ Roof Manufacturers drawings for full details of roof trusses.
Full fixing details to be supplied on a site specific basis.



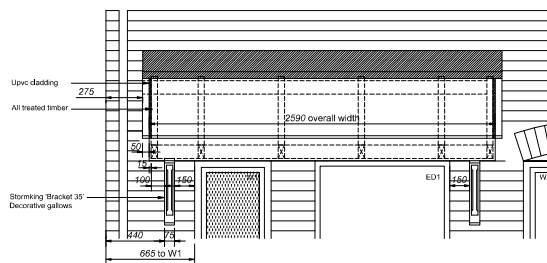
Typical Dry Ridge Detail (Halfround)

A	20.01.2025	FIRST ISSUE.
REV	DATE	DESCRIPTION
PLAN TITLE		
PFC_SD_RFE01		
SCALE	PLAN NUMBER	REV
NTS	20117 MATERIALS_PLAN	A
SITE		
BROCKHILLS LANE, NEW MILTON		
		
PENNYFARTHING Builders of Quality Homes		

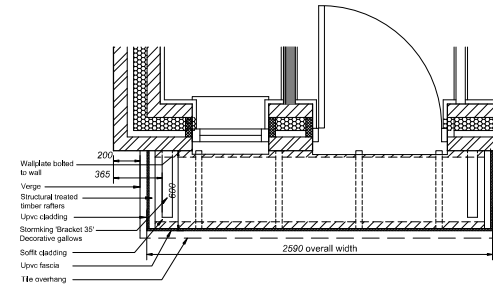




Section



Elevation



Plan

Lean to Porch Detail - Scale 1:20

A		2021-2022		FIRST ISSUE	
REV	DATE	DESCRIPTION	REV	DATE	DESCRIPTION
PLOT TITLE					
CANOPY DETAIL 2					
SCALE		PLAN MATERIALS		REV	
NTS		20117 MATERIALS PLAN		A	
SITE					
BROCKHILLS LANE, NEW MILTON					
					
PENNYFARTHING Builders of Quality Homes					