

All pockets, sleeves, and portfolios are available on the following papers:
100# Cover (White, Pearl, Cream), Matte Color Cover (PC1) or Metallic Cover (PC1)

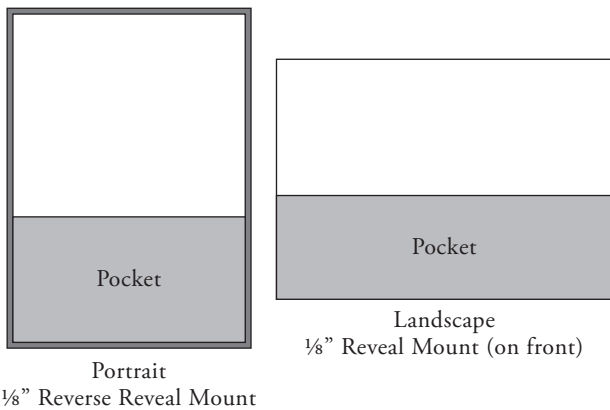
Orientation is dependent on the Style.
 Please see each Style for additional information.

All can be printed with design considerations for each Print Method and Style.

POCKETS AND SLEEVES

STYLE A (*Price Code 1*)

Single Panel, Reveal Mount Pocket *Pocket is mounted to the back of invitation. The default sizing is 1/8" reveal or 1/8" reverse reveal die cut pockets. Custom sizes available, please inquire for additional information.*



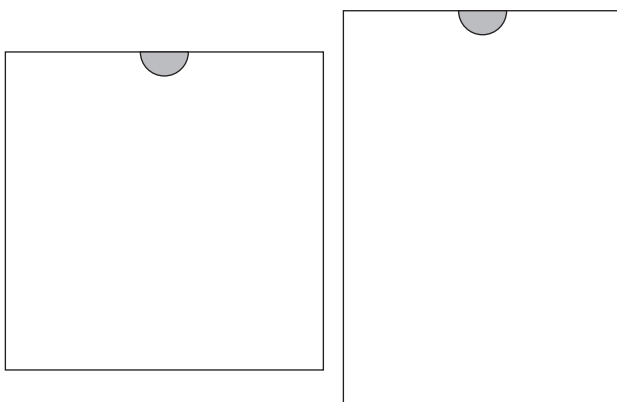
Available sizes: *A7, A8, A9, A10, Duchess, Marquis, Supreme*
Custom cut pockets can fit almost any size envelopes

Orientation: *Portrait with fixed pockets (die cut);
 Portrait or Landscape with adjustable pockets
 (custom cut-may limit insert card sizing)*

Printing: *Foil (1 panel), LP, Thermo, Flat or Digital*

STYLE B (*A2-Price Code 1, Additional Sizes-Price Code 2*)

Pouch Pocket *Pouch can hold an invitation and/or enclosures inside.*



Available sizes: *A2, 7" Square (Marquis Outer)
 and Royalty Outer*

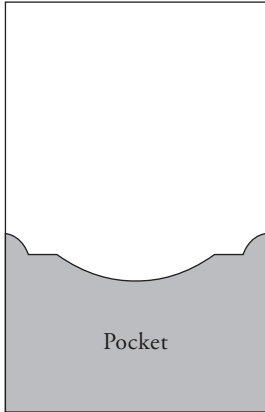
Orientation: *Portrait or Square*

Printing: *Foil (1 panel), LP*, Thermo*, Flat* or Digital*
** Marquis and A2 only*

POCKETS AND SLEEVES

STYLE H (Price Code 1)

Invitation Sleeve Pouch can hold an invitation and/or enclosures inside.



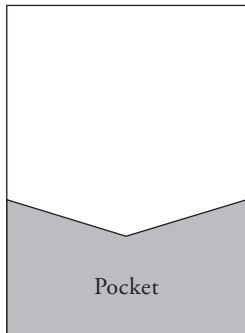
Available sizes: A9

Orientation: *Pocket opening and orientation as shown only*

Printing: *Foil (1 panel), LP, Thermo, Flat, Digital*

STYLE I (Price Code 1)

Invitation Sleeve Pouch can hold an invitation and/or enclosures inside.



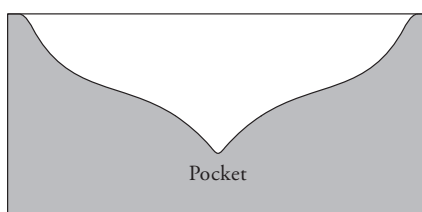
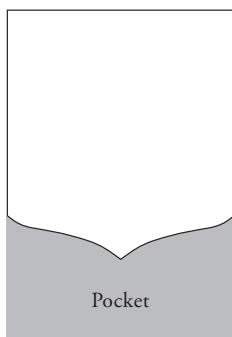
Available size: A7 Outer

Orientation: *Pocket opening and orientation as shown only*

Printing: *Foil (1 panel), LP, Thermo, Flat, Digital*

STYLE S (Price Code 2)

Single Panel, Reveal Mount Pocket *Pocket is mounted to the back of invitation. The default sizing is 1/8" reveal.*



Available size: A8, Marquis, Grandee

Orientation: *Portrait (pocket opening and orientation as shown only)*

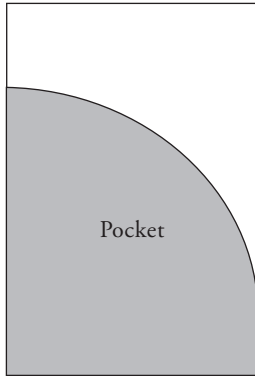
Printing: *Foil (1 panel), LP, Digital*

PORTFOLIOS

POCKETS AND SLEEVES

STYLE U *(Price Code 2)*

Pocket *Pocket can hold an invitation and/or enclosures inside.*



Available sizes: *A8*

Orientation: *Portrait (pocket opening and orientation as shown only)*

Printing: *Foil (1 panel), Thermo, Flat, Digital*

STYLE W *(Price Code 1)*

Pocket



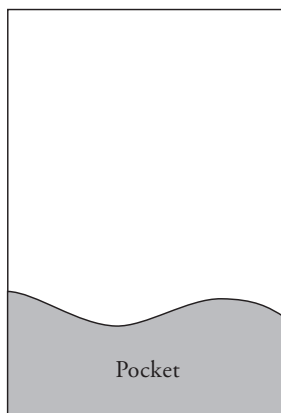
Available sizes: *This pocket is sized at 3" x 5.25" to be mounted on the back of a card.*

Orientation: *Landscape*

Printing: *Foil (1 panel), LP, Thermo, Flat, Digital*

STYLE X *(Price Code 1)*

Pocket *Pocket can hold an invitation and/or enclosures inside.*



Available sizes: *A8*

Orientation: *Portrait (pocket opening and orientation as shown only)*

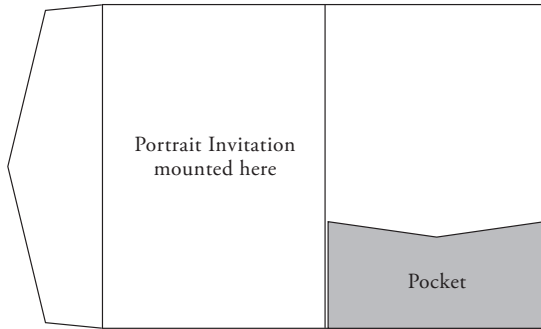
Printing: *Foil (1 panel), Thermo, Flat, Digital*

PORTFOLIOS

PORTFOLIOS

STYLE C (Price Code 2)

Pointed Flap Portfolio with pocket



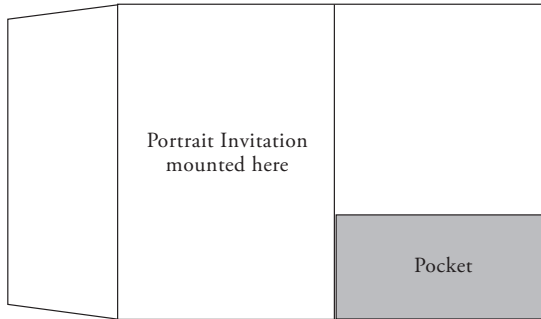
Available sizes: *Marquis, A10, Duchess, Royalty Outer*

Orientation: *Portrait or Landscape (Royalty only)*

Printing: *Foil (1 panel), LP, Digital*

STYLE D (Price Code 2)

Square Flap Portfolio with pocket



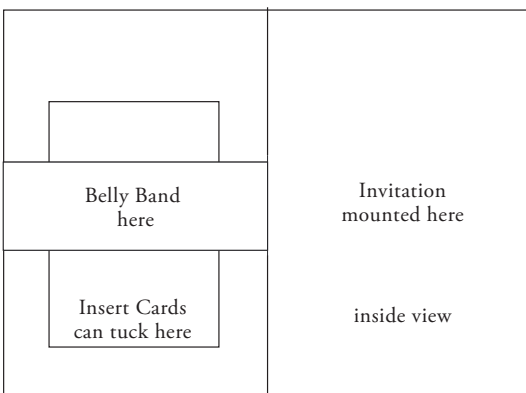
Available sizes: *A9*

Orientation: *Portrait or Landscape*

Printing: *Foil (1 panel), LP, Digital*

STYLE K (Price Code 2)

Banded Portfolio



Available sizes: *A8, 7" Square (Marquis Outer)*

Belly Band: *This portfolio has a slit to hold the belly band in place. The band can be printed in letterpress, foil or digital. Belly Band cost is additional, but its installation is included.*

Orientation: *Portrait (Belly Band placement and orientation as shown only)*

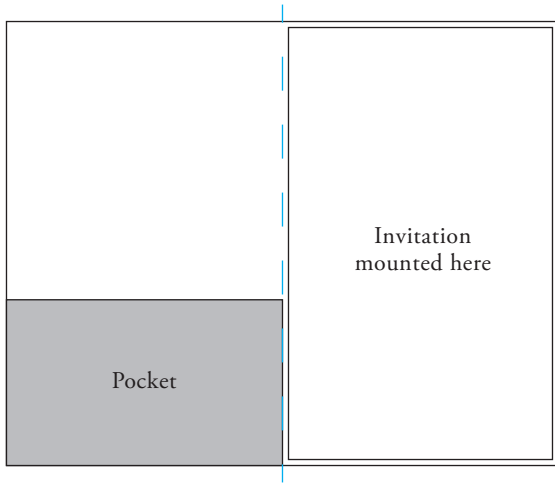
Printing: *Foil (1 panel), LP, Digital*

PORTFOLIOS

PORTFOLIOS

STYLE T *(Price Code 2)*

Two Panel Portfolio with Pocket



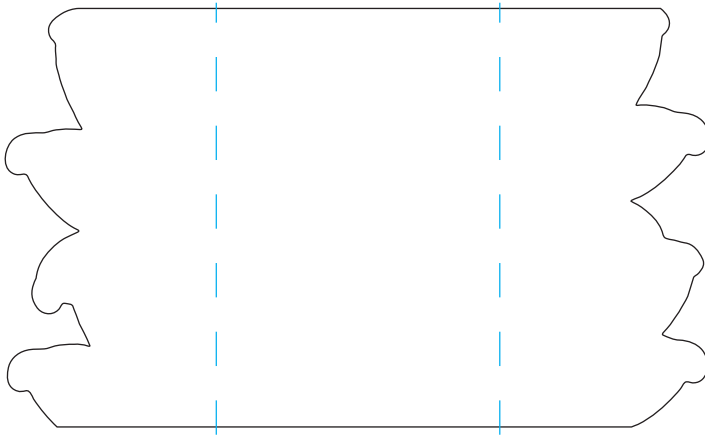
Available sizes: *A10, Marquis, Royalty Outer*

Orientation: *Portrait*

Printing: *Foil (1 panel), LP, Thermo, Flat, Digital*

PARAÍSO *(Price Code 2)*

3 Panel Die Cut Portfolio



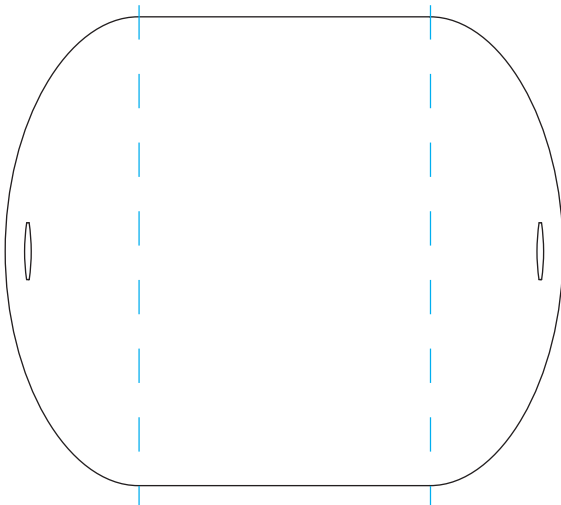
Available sizes: *A8*

Orientation: *Portrait*

Printing: *Foil (1 panel), Thermo, Flat, Digital*

ENTRADA *(Price Code 2)*

3 Panel Die Cut Portfolio



Available sizes: *A10*

Orientation: *Portrait*

Printing: *Foil (1 panel), Thermo, Flat, Digital*