

Welcome

to our 25th On Property Bull Sale

TYCOLAH



THE COTTAGE

Poll Hereford

FRIDAY 17TH JULY 2026 AT 1PM



www.tycolah.com.au



Lot 2
TYCOLAH YARDSMAN
V052



Lot 3
TYCOLAH YARDSTICK
V114

TYCOLAH & THE COTTAGE 25TH SALE

Friday 17th July 2026



offering 33/2024 Drop Poll Hereford Bulls

Contacts

Steve: 02 6783 2278 / 0457 233 777

Ben: 0419 832 270

Email: info@tycolah.com.au www.tycolah.com.au

THE COTTAGE

offering 5/2024 Drop Poll Hereford Bulls

Contacts

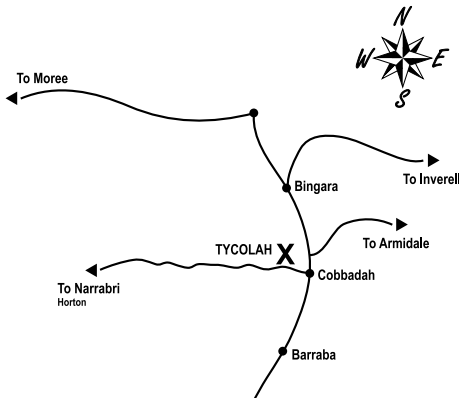
Michael: 0429 034 578 Dave: 0428 294 977 or Bill: 02 6783 2268

Sale to commence promptly at 1pm

Online and on property video open cry auction

Open Day Friday June 18th for pre-sale inspections.

HOW TO FIND US



Tycolah is situated on the Horton Rd 1.04kms west from B95 Road which is the Barraba Bingara Road (Fossickers Way).

The turn off on B95 is 18.3kms North from Barraba or 44.2Kms South from Bingara.

SALE AGENTS

John Settree

Stud Stock Dubbo, NSW

Tel: 0408 297 368

john.settree@nutrien.com.au

Tim Woodham

Stud Stock, VIC

Tel: 0436 015 115

Matt Campion

NSW

Tel: 0437 290 435

Peter Godbolt

Stud Stock Albury, VIC

Tel: 0457 591 929

Howard Carter

Barraba, NSW

Tel: 0438 853 965

Auctioneer: Paul Dooley Tel: 0458 662 646

****Sale Videos will be available online at StockLive.com.au****

***Sale conducted under*

The Australian Livestock & Property

Agents Association (ALPA)

*Livestock Auction Terms and Conditions of Sale which will be on display on Sale day.***

The logo for Nutrien Livestock features the word "Nutrien" in a bold, black, sans-serif font. To the left of the "N" is a stylized green leaf icon. Below "Nutrien" is the word "Livestock" in a smaller, black, sans-serif font.

The logo for Nutrien Ag Solutions features the word "Nutrien" in a bold, black, sans-serif font. To the left of the "N" is a stylized green leaf icon. Below "Nutrien" is the text "Ag Solutions" in a smaller, black, sans-serif font, followed by a registered trademark symbol (®).

The logo for StockLive features a stylized orange and red geometric icon consisting of three stacked, upward-pointing chevrons. To the right of the icon is the word "STOCKLIVE" in a bold, blue, sans-serif font.



STOCKLIVE

Steps To Register



Using your chosen device visit www.stocklive.com.au



Click **BID** located next to the sale you wish to participate in.

New Users



To create an account click **REGISTER**. Fill in your details, then click **CREATE BIDDER REGISTRATION**.



You will receive an email prompting you to confirm your account, create a password, accept Bidder Account T&C's & Privacy Policy.



Congratulations! Your StockLive account has been created.

Existing Users



LOGIN & find sale you wish to bid on, click **Request to bid** tick the box & click **Confirm Accept Terms**.



On Sale Day

Visit www.stocklive.com.au, when the sale is flashing **LIVE**, click **BID** to watch, listen & purchase.



Invoicing and delivery will be carried out as per your registration & account details by the respective selling agents.



1300 259 742

support@stocklive.com.au

www.stocklive.com.au



SALE INFORMATION

SALE DAY: All bulls will be sold via open cry auction with online bidding through Stock Live.

INSPECTION: We encourage buyers to inspect our cattle prior to the sale. This gives us an opportunity to assist you with your selections for your herds. Our Stud will be open on Friday the 18th June from 9.30am to 3pm or they will be available for inspection prior to the sale by phoning us or agents to make an appointment for viewing.

The Bulls will be penned and available for inspection on sale day from 10.00am.

SUPPLEMENTARY SHEETS: Will be available on Sale Day, online on our webpage or Auctions Plus.

You can also email us for Supplementary sheets at info@tycolah.com.au

FOOD/DRINKS

A light luncheon will be available for purchase provided by St Joseph's P&F.

TRANSFERS/PRIVACY

All bulls registered will be transferred to successful purchasers if you notify us on the sale instruction sheet. Please indicate on the instruction slip your details for transfer. Please include your member number.

BIO-SECURITY

Tycolah and The Cottage studs have a Transitional score of 6 and we have Bio-security plans.

REBATE:

A Rebate of 4% will be available to outside agents who attend the sale with or on behalf of their client(s) and settle within seven days of the sale. Agent is to co-sign the Buyers instruction slip. A rebate of 2% will be available to outside agents not attending the sale, but who introduce buyers in writing (fax /email/text) not later than 12 hours prior to the sale and make settlement on their behalf within 7 days of the sale.

INSURANCE:

There is no vendor insurance; it will be the responsibility of the purchaser to insure their animal(s). An Insurance Rep will be available on sale day or discuss with your agent.

ACCOMMODATION:

BARRABA

The Playhouse Hotel:
02 6782 1109 (See advert)

Andy's Backpackers
02 6782 1916 (Ensuites available)

The School House 45 Edward St
2 Queen rooms and a family room queen, king single and single Phone Rhonda 0428 821 845

97 Queen St: 1 Queen bed airbnb
Phone Rhonda 0428 821 845

Hotel Commercial
0267 821 023

Barraba Motel
02 6782 1555

Barraba Caravan Park/cabins:
02 6782 1818

BINGARA

Fossickers Inn Motel: 02 6724 1373

Hotels: 02 6724 1629 or 02 6724 1139

SALE DAY SAFETY AND DISCLAIMER

The Vendors, Family, Sale staff and representatives accept no liability for accidents that may occur, although these are rare at cattle sales, any persons attending do so at their own risk. Children are NOT allowed in the cattle pens/paddocks. Please call upon any of the agents or vendors should you require an escort to inspect the cattle. While Herefords are renowned for their docility remember the quietest animal can be unpredictable when in a strange environment.

While all care has been taken in the preparation of this catalogue Tycolah and The Cottage accept no responsibility for any errors or omissions contained in this publication.

Mobile phone service is non-existent at Tycolah we have Wi-Fi calling available for the sale via satellite.

QUALITY ASSURANCE

Quality Assurance @ Tycolah & The Cottage

We at Tycolah and the Cottage have taken every step to offer you-the buyers a disease-free Sire that will enhance your female herd reproductive rates.

- ✓ All Bulls 7 in 1 vaccinated
- ✓ All Bulls Vibrio Vaccinated x2 in 2026
- ✓ All Bulls PI Tested for Bovine Viral Diarrhoea Virus (BVDV) = Negative
- ✓ All Tycolah Bulls vaccinated for 3-day sickness
- ✓ All animals require Spring boosters

Genomics Utilisation @ Tycolah and The Cottage

- ✓ All Bulls Genomic tested

Semen Testing @ Tycolah and The Cottage

- ✓ All Bulls Semen Tested
- ✓ All Bulls tested by Brendan Coonan Northern Artificial Breeders on 18th May 2026

Bio-Security @ Tycolah and The Cottage

- ✓ J-BAS Score 6

CARE OF YOUR NEW BULL

ARRIVAL AND MANAGEMENT OF YOUR NEW BULL

- Sale bulls from “Tycolah” and “The Cottage” have been handled quietly and with care all their lives. They are run in relatively large groups, i.e. not alone.
- When they arrive at their new home, they must adjust to new yards, different noises, loss of their mates, different people, different handling methods, trucking, unloading, new pad-docks, different feed, and water! That is, it is a stressful time for them.
- To minimise the stress and speed their settling to their new environment, it is helpful to unload them at the yards into a group of quiet house cows, herd cows or steers so they are again in a “herd” and not alone. Feed with hay and let them settle.
- This is even more important if they arrive at night. Provide hay and water if they arrive at night and leave handling until the next morning. Don’t jump them off the truck into an open, strange paddock. Settling may be immediate or take some time.
- At his first joining, check your new bull regularly for at least the first 2 weeks, so any injury is detected early. Early detection and removal from the group may mean minimising any loss of use.
- Try to avoid joining a young bull in a group with an older bull or bulls, as he will be dominated and so do little work for you.
- Even a quiet bull taken away from his mates can stir up on his own in a different environment.

WELCOME

Welcome to our 2026 Bull Sale

On Behalf of our families, we warmly welcome you to our 2026 Bull Sale and we sincerely appreciate your support.

The current season is very challenging here and throughout the whole New England Region. Australian farmers are constantly displaying the resilience it takes to continue farming during many and varied challenging times.

This year we have on offer 38 Two and rising two-year-old bulls which are predominantly PP **homozygous polled**.

The Bulls have been on a ration fed twice daily due to the drought.

All bulls have been semen tested by Brendan Coonan Northern Artificial Breeders and are fertile.

The bulls have gone through a rigorous culling process from a much larger group to maximize efficiency and quality. The bulls exhibit good muscling on good frames with good doing ability. We have concentrated over the years on producing good, hooded eyes on our bulls with big wide muzzles on good bone with width behind. We are very proud of this even draft of bulls.

The Sale will be live Webcast from 1pm on Friday July 17th via Stocklive.

Regards,
Steve Crowley



Photo of Steve & Ben



Breed Avg. EBVs for 2024 Born Calves

CE	DTRS	GL	BW	200	400	600	MCW	MILK
+4.8	+5.5	-1.1	+3.6	+35	+60	+83	+67	+19
SS	DC	CWT	EMA	RIB	RUMP	RBV	IMF	Docility
+2.4	-3.8	+56	+4.5	+0.9	+1.3	+0.9	+0.9	+28

\$ Index Values: Sustainability: +\$154 MSA: +\$141

Tycolah Queenscliff N029

A bull that is certainly leaving a legacy in our herd and indeed in those that have used him both here and in New Zealand courtesy of the Te Tematau Stud in the North Island. He combines the best of the good old Australian & New Zealand bloodlines featuring Woodlands Cossack, Wattleview Indercator, Braxton Giant 4 and Allendale National. In Line breeding to these bloodlines and introducing new blood when required we believe we have produced a bull that is ideally suited to Australian conditions with a carcass ideally suited to MSA Grading requirements with added yield.

He will have a big ongoing influence through combining the Wararba Park First Class F230 bloodlines with the sires of outside blood we introduce into our herd to produce that type of animal with that extra muscle expression which carries down to lower thigh wrapped in good skin. It is unfortunate we lost him at a young age to snake bite.

Queenscliff's influence in the sale and show ring is really starting to emerge.

In New Zealand

Te Tematau Stud Queenscliff has produced the higher priced bulls at their sales for several years and is now being followed on by his sons and grandsons let alone the direct female influence of his daughters.

In Australia

Queenscliff is having an ongoing influence not only in our herd but with semen used by other breeders and sons that are breeding very well in stud and commercial herds.

JTR Unleashed Grand Champion Bull at Canberra Royal 2025 and Dubbo National and sold for \$20,000.

JTR Wentworth V056 was this years Sydney RAS Junior Champion Bull

Tycolah Woodbine Junior Champion Sydney RAS 2025 and topped our 2025 sale when sold for \$20,000 to Tenaru Stud. Woodbine was used in our stud and has excellent calves on the ground.

Tycolah Tedesco is another Queenscliff son who is having a positive influence in the Llandillo and Pinnacle Studs.

I think we will hear more of his influence in the future and is one of our major building blocks of our breeding program beginning with Tycolah Undercover S117 whose sons feature in this sale. Undercover was 2024 Sydney RAS Res Junior Champion Bull.



Tycolah Queenscliff N029

REFERENCE SIRES

TYCOLAH UNDERCOVER S117 (PP)

Ident: TPCS117

Born: 03/08/2021

Eye Pigment: 100/100

ALLENDALE YALLAROI 2 (AI) (TW) (PP)

ALLENDALE BINGARA K184 (P)

ALLENDALE CORA C81 (P)

Sire: TYCOLAH QUEENSCLIFF N029 (PP)

WARARBA PARK FIRST CLASS F230 (S)

TYCOLAH IRISH MAID J140 (P)

SEVENBARDOT IRISH MAID F39 (P)

COLUMBIAN SOUTHERN SON A18 (P)

WARARBA PARK FIRST CLASS F230 (S)

WARARBA PARK VICTORIA A94 (P)

Dam: TYCOLAH URSULA M096 (PP)

BURANDO CLASS B044 (P)

TYCOLAH URSULA F159 (P)

TYCOLAH URSULA Z67 (P)

May 2026 Hereford BREEDPLAN

GL	BW	200	400	600	MCW	Milk	SS	DC	Cwt	EMA	Rib	RUMP	RBY%	IMF%
-0.8	+4.8	+34	+50	+77	+64	+8	+0.7	-1.1	+63	+3.0	+1.8	+2.1	+0.6	+1.1
77%	91%	88%	86%	88%	78%	70%	85%	44%	76%	68%	70%	73%	62%	71%

Traits Observed: CE,600WT,SS,FAT,EMA,IMF,Genomics

Genetic Tests: POLL C-PcPc,IEF,HYF,DLF

Parent Verification: Sire: Verified, Dam: Verified

SUPPLE RAT A TAT TAT (PP)

Ident: SBRR049

Born: 19/07/2020

MELVILLE EXCEL E443 (P)

DAYS ELABORATE J59 (AI) (P)

DAYS CORA E38 (AI) (P)

Sire: GRATHLYN HOLYFIELD N019 (AI) (P)

CLOVERLEE HUNTER (PP)

GRATHLYN JEWESS L004 (AI) (PP)

GRATHLYN JEWESS H36 (P)

KARINA CHERRY Z8 (PP)

TYCOLAH KAPUTAR G27 (P)

TYCOLAH URSULA B17 (P)

Dam: SUPPLE ELMA 45 (P)

MERAWAH BRAVO T8 (AI) (P)

LINDENDALE ELMA 44 (P)

LINDENDALE ELMA 40 (TW) (P)

May 2026 Hereford BREEDPLAN

GL	BW	200	400	600	MCW	Milk	SS	DC	Cwt	EMA	Rib	RUMP	RBY%	IMF%
+1.5	+8.5	+41	+68	+83	+85	+8	+4.1	-4.0	+52	+6.0	-0.1	-0.1	+2.5	-0.4
72%	91%	88%	86%	89%	77%	63%	87%	41%	75%	66%	68%	73%	63%	68%

Traits Observed: 600WT,SS,FAT,EMA,IMF,Genomics

Genetic Tests: POLL C-PcPc,IEF,HYF,DLF

Parent Verification: Sire: Verified, Dam: Not Tested

REFERENCE SIRES

WIRRUNA SETTLER S137 (AI) (PP)

Ident: WNAS137

Born: 05/08/2021

Eye Pigment: 100/90

WIRRUNA HARTWIG H297 (P)

WIRRUNA KALIMNA K326 (PP)

WIRRUNA CORA H303 (AI) (ET) (P)

Sire: WIRRUNA QANTAS Q036 (AI) (PP)

WIRRUNA KEITH K169 (AI) (PP)

WIRRUNA LETITIA M367 (P)

WIRRUNA LETITIA J135 (AI) (P)

NJW 73S M326 TRUST 100W ET (IMP USA) (ET) (P)

WIRRUNA KIRLEY K368 (ET) (PP)

WIRRUNA NADIA F44 (AI) (PP)

Dam: WIRRUNA MADAM M476 (P)

INJEMIRA ADVANCE Y203 (H)

WIRRUNA MADAM K254 (AI) (P)

WIRRUNA MADAM F355 (P)

May 2026 Hereford BREEDPLAN

GL	BW	200	400	600	MCW	Milk	SS	DC	Cwt	EMA	Rib	RUMP	RBY%	IMF%
-3.4	+5.2	+51	+88	+124	+106	+25	+4.2	-5.2	+89	+7.0	+1.0	+1.3	+1.8	+1.8
78%	91%	88%	86%	88%	80%	71%	85%	52%	75%	66%	67%	71%	60%	69%

Traits Observed: GL,CE,BWT,200WT,400WT,SS,FAT,EMA,IMF,Genomics

Genetic Tests: POLL C-PcPc,IEF,HYF,DLF

Parent Verification: Sire: Verified, Dam: Verified

KOANUI LAYER P028 (IMP NZL) (PP)

Ident: OSA0216180028NZHB

Born: 21/07/2018

HYALITE ON TARGET 936 (P)

R LEADER 6964 (IMP USA) (PP)

R MISS REVOLUTION 1009 (P)

Sire: KOANUI LAYER 6278 (P)

MAHUTA AXLE (P)

KOANUI CYNTHIA 6099 (P)

KOANUI CYNTHIA 4075 (P)

OKAWA BARITONE 9027 (P)

KOANUI BARITONE 3600 (P)

KOANUI IRANE 0454 (P)

Dam: KOANUI REGAL 6629 (P)

KOANUI UNANIMOUS 0408 (P)

KOANUI REGAL 3111 (S)

KOANUI REGAL 3302 (P)

May 2026 Hereford BREEDPLAN

GL	BW	200	400	600	MCW	Milk	SS	DC	Cwt	EMA	Rib	RUMP	RBY%	IMF%
-3.4	+2.5	+38	+66	+90	+59	+13	+2.7	-6.7	+60	+5.9	+3.3	+4.7	+0.2	+1.2
98%	98%	97%	97%	97%	90%	87%	96%	60%	86%	75%	76%	83%	72%	80%

Traits Observed: CE,BWT,200WT,400WT(x2),600WT(x2),SS,FAT,EMA,IMF,Genomics

Genetic Tests: HYF,IEF,DLF,POLL C-PcPc

Parent Verification: Sire: Verified, Dam: Verified

Lot 1**TYCOLAH YANKEE V053 (PP)**

Ident: TPCV053

Born: 19/03/2024

Eye Pigment: 100/100

DAYS ELABORATE J59 (AI) (P)

GRATHLYN HOLYFIELD N019 (AI) (P)

GRATHLYN JEWESS L004 (AI) (PP)

Sire: **SUPPLE RAT A TAT TAT (PP)**

TYCOLAH KAPUTAR G27 (P)

SUPPLE ELMA 45 (P)

LINDENDALE ELMA 44 (P)

ALLENDALE YALLARO1 2 (AI) (TW) (PP)

ALLENDALE BINGARA K184 (P)

ALLENDALE CORA C81 (P)

Dam: **TYCOLAH PACETTE N006 (P)**

VALMA PRESTIGE E60 (P)

TYCOLAH PACETTE K49 (P)

TYCOLAH PACETTE D85 (P)



Purchaser:

Price \$:

May 2026 Hereford BREEDPLAN

GL	BW	200	400	600	MCW	Milk	SS	DC	Cwt	EMA	Rib	RUMP	RBY%	IMF%
+1.2	+6.9	+34	+46	+53	+41	+14	+2.1	-2.1	+30	+1.7	+0.0	+0.4	+1.2	-0.8
70%	79%	77%	75%	77%	67%	62%	77%	35%	61%	55%	57%	61%	48%	60%

Traits Observed: CE,BWT,200WT,600WT,FAT,EMA,IMF,Genomics**Genetic Tests:** POLL C-Homozygous Polled (PcP),IEF,HYF,DLF, **Parent Verification:** Sire: Verified, Dam: Not Tested**Notes:** BW:39kgs A Big long rich colored bull with 'RAT's' growth and extension. Dam has been a consistent breeder with 5 calves. Yankee had the highest IMF when scanned in February of 7.1**Lot 2****TYCOLAH YARDSMAN V052 (PP)**

Ident: TPCV052

Born: 15/03/2024

Eye Pigment: 100/100

DAYS ELABORATE J59 (AI) (P)

GRATHLYN HOLYFIELD N019 (AI) (P)

GRATHLYN JEWESS L004 (AI) (PP)

Sire: **SUPPLE RAT A TAT TAT (PP)**

TYCOLAH KAPUTAR G27 (P)

SUPPLE ELMA 45 (P)

LINDENDALE ELMA 44 (P)

SHF WONDER M326 W18 ET (AI) (ET) (P)

NJW 73S W18 HOMETOWN 10Y (IMP USA) (P)

NJW P606 72N DAYDREAM 73S (P)

Dam: **TYCOLAH COUNTESS P026 (AI) (P)**

VALMA PRESTIGE E60 (P)

TYCOLAH COUNTESS J39 (P)

TYCOLAH COUNTESS C34 (P)

Purchaser:

Price \$:

**May 2026 Hereford BREEDPLAN**

GL	BW	200	400	600	MCW	Milk	SS	DC	Cwt	EMA	Rib	RUMP	RBY%	IMF%
-1.0	+5.4	+34	+59	+75	+50	+13	+3.9	-3.0	+40	+4.4	+0.5	+0.1	+1.7	+0.2
71%	79%	77%	75%	78%	67%	62%	77%	37%	62%	56%	58%	62%	50%	60%

Traits Observed: CE,BWT,200WT,600WT,FAT,EMA,IMF,Genomics**Genetic Tests:** POLL C-Homozygous Polled (PcPc),IEF,HYF,DLF, **Parent Verification:** Sire: Verified, Dam: Not Tested**Notes:** BW:39kgs A rich colored, real volume bull with plenty of muscle. Dam Countess P026 is our best Hometown cow with volume, muscle, milk with a good udder. Yardsman V052 will add carcass dimension to your herd. He had a high IMF of 6.6 & EMA of 138 when measured in February.

Lot 3**TYCOLAH YARDSTICK V114 (PP)**

Ident: TPCV114

Born: 07/08/2024

Eye Pigment: 100/100

ALLEDALE BINGARA K184 (P)

TYCOLAH QUEENSCLIFF N029 (PP)

TYCOLAH IRISH MAID J140 (P)

Sire: **TYCOLAH UNDERCOVER S117 (PP)**

WARARBA PARK FIRST CLASS F230 (S)

TYCOLAH URSULA M096 (PP)

TYCOLAH URSULA F159 (P)

ALLEDALE BINGARA K184 (P)

TYCOLAH QUEANBEAN N032 (P)

TYCOLAH MISS GUNN J37 (P)

Dam: **TYCOLAH BESS Q026 (P)**

TYCOLAH LYNWOOD H184 (P)

TYCOLAH BESS M121 (P)

TYCOLAH BESS A28 (P)



Purchaser:

Price \$:

May 2026 Hereford BREEDPLAN														
GL	BW	200	400	600	MCW	Milk	SS	DC	Cwt	EMA	Rib	RUMP	RBY%	IMF%
+0.8	+7.5	+45	+62	+95	+96	+13	+1.0	-1.8	+65	+0.0	+0.3	+0.4	+0.0	+0.2
72%	80%	77%	76%	78%	67%	64%	77%	35%	63%	56%	59%	63%	48%	61%

Traits Observed: BWT,200WT,600WT,SS,FAT,EMA,IMF,Genomics**Genetic Tests:** POLL C-Homozygous Polled (PcPf),IEF,HYF,DLF, **Parent Verification:** Sire: Verified, Dam: Not Tested**Notes:** BW46kgs: One of my favorite bulls. Yardstick combines great growth, length and agility with good muscling. Dam Bess Q026 is a very good breeder, weaning off a very stylish Tycolah Viking heifer this year. In February when scanned this bull had the highest EMA of the Spring bulls of 125cms and IMF of 6.6.**Lot 4****TYCOLAH YEOMAN V124 (PP)**

Ident: TPCV124

Born: 14/08/2024

Eye Pigment: 100/100

WIRRUNA KALIMNA K326 (PP)

WIRRUNA QANTAS Q036 (AI) (PP)

WIRRUNA LETITIA M367 (P)

Sire: **WIRRUNA SETTLER S137 (AI) (PP)**

WIRRUNA KIRLEY K368 (ET) (PP)

WIRRUNA MADAM M476 (P)

WIRRUNA MADAM K254 (AI) (P)

COLUMBIAN SOUTHERN SON A18 (P)

WARARBA PARK FIRST CLASS F230 (S)

WARARBA PARK VICTORIA A94 (P)

Dam: **TYCOLAH CORISANDE M081 (P)**

KARINA CHERRY Z8 (PP)

TYCOLAH CORISANDE E122 (PP)

TYCOLAH CORISANDE B04 (P)



Purchaser:

Price \$:

May 2026 Hereford BREEDPLAN														
GL	BW	200	400	600	MCW	Milk	SS	DC	Cwt	EMA	Rib	RUMP	RBY%	IMF%
-1.4	+5.1	+43	+76	+100	+68	+29	+2.4	-3.8	+68	+7.2	+1.0	+2.0	+2.0	+1.0
73%	79%	77%	76%	78%	68%	65%	78%	40%	62%	56%	57%	61%	49%	61%

Traits Observed: BWT,200WT,400WT,600WT,SS,FAT,EMA,IMF,Genomics**Genetic Tests:** POLL C-Homozygous Polled (PcPc),IEF,HYF,DLF, **Parent Verification:** Sire: Verified, Dam: Not Tested**Notes:** BW:43kgs. Our first Wirruna Settler son to sell. A long growthy bull out of a great breeding Corisande cow. Corisande M081 is the Dam of Tycolah Volume who is breeding the house down for us and in The Mills Poll Hereford Stud. She also bred Tycolah Utopia who sold to Iventure Past Co. Feb 2025 EMA =122 IMF= 6.4%

Lot 5

TYCOLAH YARRAMAN V101 (PP)

Ident: TPCV101

Born: 13/05/2024

Eye Pigment: 100/100

WIRRUNA KALIMNA K326 (PP)

WIRRUNA QANTAS Q036 (AI) (PP)

WIRRUNA LETITIA M367 (P)

Sire: **WIRRUNA SETTLER S137 (AI) (PP)**

WIRRUNA KIRLEY K368 (ET) (PP)

WIRRUNA MADAM M476 (P)

WIRRUNA MADAM K254 (AI) (P)

KARINA CHERRY Z8 (PP)

TYCOLAH HELL BENT (S)

TYCOLAH COUNTESS W72 (P)

Dam: **WARARBA PARK JESSIE J93 (P)**

KERLSON PINES ADRENALINE A52 (P)

WARARBA PARK JESSIE E124 (P)

GLENARBA JESSIE V9 (P)



Purchaser:

Price \$:

May 2026 Hereford BREEDPLAN														
GL	BW	200	400	600	MCW	Milk	SS	DC	Cwt	EMA	Rib	RUMP	RBY%	IMF%
-0.5	+5.9	+37	+62	+93	+58	+16	+3.2	-3.9	+63	+5.9	+0.5	+0.7	+1.6	+1.3
71%	79%	77%	75%	77%	67%	64%	76%	38%	61%	53%	55%	60%	45%	59%

Traits Observed: BWT,200WT,600WT(x2),SS,FAT,EMA,IMF,Genomics

Genetic Tests: POLL C-Homozygous Polled (PcPc),IEF,HYF,DLF **Parent Verification:** Sire: Verified, Dam: Not Tested

Notes: BW42kgs: A dark colored thick bodied bull by Wirruna Settler of the good Jessie cow. Wararba Park Jessie J93 has had 10 calves and is still breeding in the stud. She is also the mother of Tycolah Sanddune who sold for \$22,000 to Colin and Joanne Latimore and Tycolah Universe who was used in our stud and sold to Bill Plevy for \$18,000. Feb 2025 =EMA 126 and IMF 6.8

Lot 6

TYCOLAH YABUZUKA V143 (PP)

Ident: TPCV143

Born: 29/08/2024

Eye Pigment: 100/95

DAYS ELABORATE J59 (AI) (P)

GRATHLYN HOLYFIELD N019 (AI) (P)

GRATHLYN JEWESS L004 (AI) (PP)

Sire: **SUPPLE RAT A TAT TAT (PP)**

TYCOLAH KAPUTAR G27 (P)

SUPPLE ELMA 45 (P)

LINDENDALE ELMA 44 (P)

YUKON PARK PROFILER F520 (PP)

MOUNTAIN VALLEY JINX J74 (PP)

MOUNTAIN VALLEY VICTORIA E1 (P)

Dam: **TYCOLAH MISS MOONBEAM M069 (P)**

TYCOLAH FAIR N SQUARE (P)

TYCOLAH MISS MOONBEAM H110 (AI) (P)

TYCOLAH MISS MOONBEAM F54 (P)



Purchaser:

Price \$:

May 2026 Hereford BREEDPLAN														
GL	BW	200	400	600	MCW	Milk	SS	DC	Cwt	EMA	Rib	RUMP	RBY%	IMF%
-0.5	+8.8	+45	+82	+114	+120	+17	+2.1	-0.9	+68	+5.8	-1.1	-1.1	+2.9	-0.1
71%	80%	77%	76%	78%	67%	62%	79%	35%	62%	56%	57%	62%	49%	60%

Traits Observed: BWT,200WT,400WT,600WT,SS,FAT,EMA,IMF,Genomics

Genetic Tests: POLL C-Homozygous Polled (PcPc),IEF,HYF,DLF **Parent Verification:** Sire: Verified, Dam: Not Tested

Notes: BW44kgs: A good skinned deep bodied bull with a high growth rate & well fleshed. Dam Miss Moonbeam M069 is an excellent breeder having had 7 calves with 3 bulls sold at our sales, to average \$18,000 Feb 2025 EMA=121 & IMF= 5.8

Lot 7

TYCOLAH YAZIR V172 (PP)

Ident: TPCV172

Born: 20/09/2024

Eye Pigment: 100/100

WIRRUNA KALIMNA K326 (PP)

WIRRUNA QANTAS Q036 (AI) (PP)

WIRRUNA LETITIA M367 (P)

Sire: **WIRRUNA SETTLER S137 (AI) (PP)**

WIRRUNA KIRLEY K368 (ET) (PP)

WIRRUNA MADAM M476 (P)

WIRRUNA MADAM K254 (AI) (P)

COLUMBIAN SOUTHERN SON A18 (P)

WARARBA PARK FIRST CLASS F230 (S)

WARARBA PARK VICTORIA A94 (P)

Dam: **TYCOLAH TESSIES FAVORITE Q113 (P)**

VALMA PRESTIGE E60 (P)

TYCOLAH TESSIES FAVORITE K144 (P)

TYCOLAH TESSIES FAVOURITE X93 (P)



Purchaser:

Price \$:

May 2026 Hereford BREEDPLAN

GL	BW	200	400	600	MCW	Milk	SS	DC	Cwt	EMA	Rib	RUMP	RBY%	IMF%
-2.4	+5.4	+39	+70	+97	+96	+18	+1.4	-1.2	+65	+4.8	+0.6	+0.9	+1.5	+0.8
71%	79%	76%	75%	77%	68%	64%	77%	40%	61%	55%	57%	61%	49%	60%

Traits Observed: BWT,200WT,400WT,600WT,SS,FAT,EMA,IMF,Genomics

Genetic Tests: POLL C-Homozygous Polled (PcPc),IEF,HYF,DLF, Parent Verification: Sire: Verified, Dam: Not Tested

Notes: BW41kgs: A well-structured, good colored deep bodied bull on good bone with thickness. Out of a good breeder Tessie's Favorite Q113 who has had 5 calves Feb 2025 EMA=115 and IMF= 6.9

Lot 8

TYCOLAH YEARNING V175 (PP)

Ident: TPCV175

Born: 24/09/2024

Eye Pigment: 100/100

DAYS ELABORATE J59 (AI) (P)

GRATHLYN HOLYFIELD N019 (AI) (P)

GRATHLYN JEWESS L004 (AI) (PP)

Sire: **SUPPLE RAT A TAT TAT (PP)**

TYCOLAH KAPUTAR G27 (P)

SUPPLE ELMA 45 (P)

LINDENDALE ELMA 44 (P)

WARARBA PARK FIRST CLASS F230 (S)

TYCOLAH PRIZE FIGHTER M092 (PP)

TYCOLAH CORISANDE G32 (P)

Dam: **TYCOLAH GRACE Q103 (P)**

KARINA CHERRY Z8 (PP)

TYCOLAH GRACE J157 (P)

TYCOLAH GRACE F148 (P)



Purchaser:

Price \$:

May 2026 Hereford BREEDPLAN

GL	BW	200	400	600	MCW	Milk	SS	DC	Cwt	EMA	Rib	RUMP	RBY%	IMF%
-0.4	+8.9	+46	+76	+100	+102	+14	+3.4	-2.2	+63	+3.9	-0.4	-0.5	+1.8	+0.2
70%	79%	77%	75%	77%	67%	62%	78%	36%	61%	55%	57%	62%	50%	59%

Traits Observed: BWT,200WT,400WT,600WT,SS,FAT,EMA,IMF,Genomics

Genetic Tests: POLL C-Homozygous Polled (PcPc),IEF,HYF,DLF, Parent Verification: Sire: Verified, Dam: Not Tested

Notes: BW46kgs: A striking rich colored long growthy bull with good muscling. Dam Grace Q103 has had 5 calves and milks well. Feb 2025 EMA 119 and IMF =5.8

Lot 9**TYCOLAH YARRA V038 (P)**

Ident: TPCV038

Born: 08/03/2024

Eye Pigment: 100/100

ALLENDALE BINGARA K184 (P)

TYCOLAH QUEENSCLIFF N029 (PP)

TYCOLAH IRISH MAID J140 (P)

Sire: **TYCOLAH UNDERCOVER S117 (PP)**

WARARBA PARK FIRST CLASS F230 (S)

TYCOLAH URSULA M096 (PP)

TYCOLAH URSULA F159 (P)

VALMA NAPOLEON II (AI) (P)

VALMA PRESTIGE E60 (P)

VALMA SILVER'S CORISANDE (AI) (P)

Dam: **TYCOLAH GRACE K73 (P)**

KARINA CHERRY Z8 (PP)

TYCOLAH GRACE C31 (P)

TYCOLAH GRACE T47 (H)



Purchaser:

Price \$:

May 2026 Hereford BREEDPLAN

GL	BW	200	400	600	MCW	Milk	SS	DC	Cwt	EMA	Rib	RUMP	RBY%	IMF%
-0.4	+4.2	+31	+50	+70	+62	+5	+0.4	-0.2	+52	+3.1	+1.6	+1.8	+0.5	+0.9
71%	80%	77%	76%	78%	67%	65%	77%	37%	62%	56%	59%	63%	51%	61%

Traits Observed: CE,BWT,200WT,600WT(x2),FAT,EMA,IMF,Genomics**Genetic Tests:** POLL C-Heterozygous Polled (HPC),IEF,HYF,DLF, **Parent Verification:** Sire: Verified, Dam: Not Tested**Notes:** BW34kgs: A good headed bull with very good conformation. This bull is set up very well through the hindquarters with a good hind leg. A light birthweight bull out of a good old cow who has had 8 calves. Feb 2025 IMF=6.4**Lot 10****TYCOLAH YARRAN V032 (PP)**

Ident: TPCV032

Born: 06/03/2024

Eye Pigment: 100/100

ALLENDALE BINGARA K184 (P)

TYCOLAH QUEENSCLIFF N029 (PP)

TYCOLAH IRISH MAID J140 (P)

Sire: **TYCOLAH UNDERCOVER S117 (PP)**

WARARBA PARK FIRST CLASS F230 (S)

TYCOLAH URSULA M096 (PP)

TYCOLAH URSULA F159 (P)

KOANUI TECHNO 3062 (IMP NZL) (PP)

KOANUI TECHNO 6179 (IMP NZL) (PP)

KOANUI ANGEL 2392 (P)

Dam: **TYCOLAH GRACE Q016 (AI) (P)**

MOUNTAIN VALLEY JINX J74 (PP)

TYCOLAH GRACE M062 (P)

TYCOLAH GRACE H134 (P)



Purchaser:

Price \$:

May 2026 Hereford BREEDPLAN

GL	BW	200	400	600	MCW	Milk	SS	DC	Cwt	EMA	Rib	RUMP	RBY%	IMF%
+1.8	+5.3	+38	+58	+86	+61	+13	+2.3	-3.8	+57	+3.1	+1.4	+1.7	+0.3	+1.9
71%	79%	76%	75%	77%	66%	63%	76%	38%	61%	54%	57%	61%	49%	59%

Traits Observed: CE,BWT,200WT,600WT(x2),FAT,EMA,IMF,Genomics**Genetic Tests:** POLL C-Homozygous Polled (PcPc),IEF,HYF,DLF, **Parent Verification:** Sire: Verified, Dam: Not Tested**Notes:** BW35kgs: A long well structured good, skinned bull with a good growth rate from a low birthweight. The first bull calf from a good breeding Techno cow who sold to Dave Lindsay at our female sale. Another bull with high IMF a trait which Undercover seems to be throwing consistently.

Lot 11

TYCOLAH YUKON V084 (PP)

Ident: TPCV084

Born: 06/04/2024

Eye Pigment: 100/100

DAYS ELABORATE J59 (AI) (P)

GRATHLYN HOLYFIELD N019 (AI) (P)

GRATHLYN JEWESS L004 (AI) (PP)

Sire: **SUPPLE RAT A TAT TAT (PP)**

TYCOLAH KAPUTAR G27 (P)

SUPPLE ELMA 45 (P)

LINDENDALE ELMA 44 (P)

CANNAWIGRA COMMANDER Z51 (S)

MOUNTAIN VALLEY LEIUTENANT L1 (P)

MOUNTAIN VALLEY VICTORIA F17 (P)

Dam: **TYCOLAH ADVANCE N163 (P)**

TH 223 71I CONQUER 409X (IMP USA) (AI) (ET) (P)

TYCOLAH ADVANCE K34 (AI) (P)

TYCOLAH ADVANCE G22 (P)



Purchaser:

Price \$:

May 2026 Hereford BREEDPLAN

GL	BW	200	400	600	MCW	Milk	SS	DC	Cwt	EMA	Rib	RUMP	RBY%	IMF%
+1.4	+4.7	+30	+46	+49	+39	+5	+0.3	-0.4	+31	+4.8	+1.2	+1.7	+1.0	+0.1
69%	79%	76%	74%	77%	65%	61%	77%	34%	60%	54%	56%	60%	49%	59%

Traits Observed: CE,BWT,200WT,600WT(x2),SS,FAT,EMA,IMF,Genomics

Genetic Tests: POLL C-Homozygous Polled (PcPc),IEF,HYF,DLF, **Parent Verification:** Sire: Verified, Dam: Not Tested

Notes: BW41.5kgs: One of my favorite's for his great conformation and balance. Yukon is out of a beautiful deep bodied cow with an excellent udder.

Lot 12

TYCOLAH YETTA V002 (TW) (PP)

Ident: TPCV002

Born: 23/02/2024

Eye Pigment: 100/100

DAYS ELABORATE J59 (AI) (P)

GRATHLYN HOLYFIELD N019 (AI) (P)

GRATHLYN JEWESS L004 (AI) (PP)

Sire: **SUPPLE RAT A TAT TAT (PP)**

TYCOLAH KAPUTAR G27 (P)

SUPPLE ELMA 45 (P)

LINDENDALE ELMA 44 (P)

SHF WONDER M326 W18 ET (AI) (ET) (P)

NJW 73S W18 HOMETOWN 10Y (IMP USA) (P)

NJW P606 72N DAYDREAM 73S (P)

Dam: **TYCOLAH CLIMAX P049 (AI) (P)**

TYCOLAH LANDMASTER H66 (S)

TYCOLAH CLIMAX L71 (P)

TYCOLAH CLIMAX H97 (P)



Purchaser:

Price \$:

May 2026 Hereford BREEDPLAN

GL	BW	200	400	600	MCW	Milk	SS	DC	Cwt	EMA	Rib	RUMP	RBY%	IMF%
+0.0	+4.3	+35	+59	+72	+46	+11	+1.8	-3.3	+50	+3.6	+1.5	+1.8	+1.0	+0.7
71%	79%	77%	75%	77%	67%	62%	77%	37%	62%	56%	58%	62%	50%	60%

Traits Observed: BWT,200WT,600WT(x2),FAT,EMA,IMF,Genomics

Genetic Tests: POLL C-Homozygous Polled (PcPc),IEF,HYF,DLF, **Parent Verification:** Sire: Verified, Dam: Not Tested

Notes: BW32kgs: A very correct smooth fronted bull. Had a high IMF for the paddock bulls of 6.4 in Feb 2025. Yetta is out a good breeder being the dam of Tycolah Vocal T067 selling for \$28,000 to Pinnacle Stud where he is breeding very well.

Lot 13

TYCOLAH YAWL V075 (P)

Ident: TPCV075

Born: 28/03/2024

Eye Pigment: 100/100

ALLENDALE BINGARA K184 (P)

TYCOLAH QUEENSCLIFF N029 (PP)

TYCOLAH IRISH MAID J140 (P)

Sire: **TYCOLAH UNDERCOVER S117 (PP)**

WARARBA PARK FIRST CLASS F230 (S)

TYCOLAH URSULA M096 (PP)

TYCOLAH URSULA F159 (P)

MOUNTAIN VALLEY LEIUTENANT L1 (P)

TYCOLAH RESOLVE P155 (P)

CANNAWIGRA F81 CAPRI J108 (P)

Dam: **TYCOLAH ADVANCE S129 (P)**

ALLENDALE BINGARA K184 (P)

TYCOLAH ADVANCE Q120 (P)

TYCOLAH ADVANCE K128 (P)



Purchaser:

Price \$:

May 2026 Hereford BREEDPLAN

GL	BW	200	400	600	MCW	Milk	SS	DC	Cwt	EMA	Rib	RUMP	RBY%	IMF%
-3.7	+8.5	+49	+77	+120	+114	+11	+1.2	-0.4	+86	+4.2	+0.4	+0.5	+2.0	+0.8
71%	79%	77%	75%	78%	67%	63%	77%	35%	62%	56%	58%	62%	50%	61%

Traits Observed: CE,BWT,200WT,600WT(x2),FAT,EMA,IMF,Genomics

Genetic Tests: POLL C-Heterozygous Polled (HPc),IEF,HYF,DLF, Parent Verification: Sire: Verified, Dam: Not Tested

Notes: BW49kgs: A very high growth, well-muscled bull with a great topline. Notice his high carcass weight and Retail beef yield but still has positive IMF.

Lot 14

TYCOLAH YARN V064 (PP)

Ident: TPCV064

Born: 26/03/2024

Eye Pigment: 100/100

WIRRUNA KALIMNA K326 (PP)

WIRRUNA QANTAS Q036 (AI) (PP)

WIRRUNA LETITIA M367 (P)

Sire: **WIRRUNA SETTLER S137 (AI) (PP)**

WIRRUNA KIRLEY K368 (ET) (PP)

WIRRUNA MADAM M476 (P)

WIRRUNA MADAM K254 (AI) (P)

TYCOLAH JOVIAL F77 (PP)

TYCOLAH LITTLE JOVE H52 (P)

TYCOLAH ASTERET B30 (P)

Dam: **TYCOLAH BONNIE MIXER L141 (P)**

BURANDO CLASS B044 (P)

TYCOLAH BONNIE MIXER H14 (P)

TYCOLAH BONNIE MIXER Z90 (P)



Purchaser:

Price \$:

May 2026 Hereford BREEDPLAN

GL	BW	200	400	600	MCW	Milk	SS	DC	Cwt	EMA	Rib	RUMP	RBY%	IMF%
-2.6	+6.2	+43	+69	+102	+102	+25	+2.7	-2.7	+66	+4.1	-0.9	-1.2	+2.5	+0.6
71%	79%	77%	75%	77%	67%	63%	76%	38%	60%	54%	56%	60%	47%	59%

Traits Observed: CE,BWT,200WT,600WT,Genomics

Genetic Tests: POLL C-Homozygous Polled (PcPc),IEF,HYF,DLF, Parent Verification: Sire: Verified, Dam: Not Tested

Notes: BW46kgs: Another bull with high growth rate and good carcass. Dam Bonnie Mixer L141 has been a great breeder. Notice his milk figure.

Lot 15

TYCOLAH YACKA V025 (PP)

Ident: TPCV025

Born: 04/03/2024

Eye Pigment: 100/100

ALLENDALE BINGARA K184 (P)

TYCOLAH QUEENSLIFF N029 (PP)

TYCOLAH IRISH MAID J140 (P)

Sire: **TYCOLAH UNDERCOVER S117 (PP)**

WARARBA PARK FIRST CLASS F230 (S)

TYCOLAH URSULA M096 (PP)

TYCOLAH URSULA F159 (P)

TYCOLAH KINGPIN G45 (P)

TYCOLAH MAINSTAY J149 (PP)

TYCOLAH COUNTESS G126 (AI) (ET) (P)

Dam: **TYCOLAH BESS N157 (P)**

KARINA CHERRY Z8 (PP)

TYCOLAH BESS E101 (P)

TYCOLAH BESS A28 (P)



Purchaser:

Price \$:

May 2026 Hereford BREEDPLAN

GL	BW	200	400	600	MCW	Milk	SS	DC	Cwt	EMA	Rib	RUMP	RBY%	IMF%
-0.2	+5.1	+35	+61	+87	+76	+9	+2.0	-2.0	+62	+2.9	+1.2	+1.4	+0.5	+1.0
73%	81%	79%	77%	79%	68%	65%	79%	38%	64%	58%	60%	64%	51%	62%

Traits Observed: CE,BWT,200WT,600WT(x2),FAT,EMA,IMF,Genomics

Genetic Tests: POLL C-Homozygous Polled (PcPc),IEF,HYF,DLF, **Parent Verification:** Sire: Verified, Dam: Not Tested

Notes: BW33kgs: Another very good conformation Undercover son with a light birthweight but good growth and fleshing. Dam (Bess N157) has bred well including Undoolya S022 who sold for \$30,000

Lot 16

TYCOLAH YOYO V109 (PP)

Ident: TPCV109

Born: 30/07/2024

Eye Pigment: 100/100

ALLENDALE BINGARA K184 (P)

TYCOLAH QUEENSLIFF N029 (PP)

TYCOLAH IRISH MAID J140 (P)

Sire: **TYCOLAH UNDERCOVER S117 (PP)**

WARARBA PARK FIRST CLASS F230 (S)

TYCOLAH URSULA M096 (PP)

TYCOLAH URSULA F159 (P)

WARARBA PARK FIRST CLASS F230 (S)

TYCOLAH PRIZE FIGHTER M092 (PP)

TYCOLAH CORISANDE G32 (P)

Dam: **TYCOLAH CLIMAX R055 (P)**

TYCOLAH LANDMASTER H66 (S)

TYCOLAH CLIMAX L71 (P)

TYCOLAH CLIMAX H97 (P)



Purchaser:

Price \$:

May 2026 Hereford BREEDPLAN

GL	BW	200	400	600	MCW	Milk	SS	DC	Cwt	EMA	Rib	RUMP	RBY%	IMF%
-3.5	+0.7	+33	+53	+74	+34	+14	+2.0	-3.9	+62	+2.5	+3.1	+4.5	+0.2	+1.2
71%	80%	78%	76%	78%	67%	63%	78%	35%	62%	56%	58%	62%	49%	60%

Traits Observed: BWT,200WT,400WT,600WT,SS,FAT,EMA,IMF,Genomics

Genetic Tests: POLL C-Homozygous Polled (PcPc),IEF,HYF,DLF, **Parent Verification:** Sire: Verified, Dam: Not Tested

Notes: BW34kgs: Another well made good bodied Undercover son with a light birthweight. YOYO is out of the very good Climax cow line with good milk and easy calving. Another Undercover with good IMF & Fat cover.

Lot 17

TYCOLAH YARDARM V078 (AI) (PP)

Ident: TPCV078

Born: 29/03/2024

Eye Pigment: 100/100

R LEADER 6964 (IMP USA) (PP)

KOANUI LAYER 6278 (P)

KOANUI CYNTHIA 6099 (P)

Sire: **KOANUI LAYER P028 (IMP NZL) (PP)**

KOANUI BARITONE 3600 (P)

KOANUI REGAL 6629 (P)

KOANUI REGAL 3111 (S)

ALLENDALE YALLARO I 2 (AI) (TW) (PP)

ALLENDALE BINGARA K184 (P)

ALLENDALE CORA C81 (P)

Dam: **TYCOLAH CAPRI S131 (AI) (P)**

MOUNTAIN VALLEY LEUTENANT L1 (P)

TYCOLAH CAPRI Q057 (P)

CANNAWIGRA F81 CAPRI J108 (P)



Purchaser:

Price \$:

May 2026 Hereford BREEDPLAN

GL	BW	200	400	600	MCW	Milk	SS	DC	Cwt	EMA	Rib	RUMP	RBY%	IMF%
-3.2	+4.1	+45	+67	+95	+71	+18	+2.7	-5.7	+68	+4.0	+1.7	+2.7	+1.0	+0.2
76%	80%	78%	77%	79%	69%	67%	78%	41%	63%	56%	58%	63%	52%	62%

Traits Observed: GL,CE,BWT,200WT,600WT(x2),FAT,EMA,IMF,Genomics

Genetic Tests: POLL C-Homozygous Polled (PcPc),IEF,HYF,DLF, **Parent Verification:** Sire: Verified, Dam: Not Tested

Notes: BW35kgs: First calf out of an excellent young cow with good milk and perfect udder. Yardarm is a good-doing deep bodied bull, rich in color with great skin & hair. Had a high EMA and High IMF+6.6 when scanned in Feb 2025. This bull would suit a stud looking for a heifer bull.

Lot 18

TYCOLAH YANKO V079 (AI) (PP)

Ident: TPCV079

Born: 30/03/2024

Eye Pigment: 100/100

R LEADER 6964 (IMP USA) (PP)

KOANUI LAYER 6278 (P)

KOANUI CYNTHIA 6099 (P)

Sire: **KOANUI LAYER P028 (IMP NZL) (PP)**

KOANUI BARITONE 3600 (P)

KOANUI REGAL 6629 (P)

KOANUI REGAL 3111 (S)

ALLENDALE BINGARA K184 (P)

TYCOLAH QUEENSLIFF N029 (PP)

TYCOLAH IRISH MAID J140 (P)

Dam: **TYCOLAH MISS GUNN S169 (P)**

WARARBA PARK FIRST CLASS F230 (S)

TYCOLAH MISS GUNN L103 (P)

KIDMAN MISS GUNN B244 (P)



Purchaser:

Price \$:

May 2026 Hereford BREEDPLAN

GL	BW	200	400	600	MCW	Milk	SS	DC	Cwt	EMA	Rib	RUMP	RBY%	IMF%
-1.2	+1.8	+27	+45	+62	+44	+8	+2.3	-3.1	+45	+3.3	+1.5	+1.8	+0.6	-0.4
77%	80%	79%	78%	79%	70%	68%	79%	43%	64%	58%	60%	64%	53%	63%

Traits Observed: GL,CE,BWT,200WT,600WT(x2),SS,FAT,EMA,IMF,Genomics

Genetic Tests: POLL C-Homozygous Polled (PcPc),IEF,HYF,DLF, **Parent Verification:** Sire: Verified, Dam: Not Tested

Notes: BW37kgs: Another light birthweight Layer bull that would suit heifers. Yanko is a deep bodied good skinned easy-doing Layer son.

Lot 19 THE COTTAGE SOPRANO V023 (PP)

Ident: CTGV023

Born: 01/10/2024

Eye Pigment: 100/100

ALLENDALE CHISEL L3 (ET) (PP)

ALLENDALE JACKAL P176 (PP)

ALLENDALE KERRY MAID L113 (AI) (P)

Sire: **GLENDAN PARK SOPRANO S115 (AI) (PP)**

GLENDAN PARK BIFFO B120 (P)

GLENDAN PARK MOTH G142 (P)

GLENDAN PARK MOTH E134 (P)

MATARIKI HOLY - SMOKE (IMP NZL) (P)

DALKEITH KEEPSAKE K106 (AI) (P)

DALKEITH DIVIDEND 639 (G188) (P)

Dam: **TUMMEL SHAMROCK N233 (P)**

KYAN GALLIANO (P)

TUMMEL SHAMROCK K51 (P)

MERAWAH SHAMROCK F152 (P)

Purchaser:

Price \$:

THE COTTAGE

May 2026 Hereford BREEDPLAN

GL	BW	200	400	600	MCW	Milk	SS	DC	Cwt	EMA	Rib	RUMP	RBY%	IMF%
-0.5	+6.3	+55	+94	+135	+130	+21	+2.4	-4.5	+96	+6.4	+0.8	+1.6	+1.6	+1.6
73%	78%	76%	75%	76%	66%	62%	76%	35%	59%	52%	54%	59%	45%	58%

Traits Observed: 200WT,400WT,Genomics

Genetic Tests: POLL C-Homozygous Polled (PcPc),IEF,HYF,DLF, Parent Verification: Sire: Verified, Dam: Not Tested

Notes: A son of the \$45,000 Glendan Park Soprano. A balanced young bull with extra oompf. A trait leader for growth and carcass weight for calves born in 2024. Out of a top Tummel cow purchased at their dispersal, he is a sire prospect worth inspecting

Lot 20 THE COTTAGE PACIFIER V006 (PP)

Ident: CTGV006

Born: 30/07/2024

KOANUI TECHNO 3062 (IMP NZL) (PP)

GRATHLYN PACIFIER (AI) (PP)

GRATHLYN CHANCE L046 (P)

Sire: **THE COTTAGE PACIFIER S011 (PP)**

DEBARRY INTERROGATOR C181 (P)

THE COTTAGE CHERRY J16 (P)

THE COTTAGE CHERRY D6 (P)

CANNAWIGRA BATTLEGROUND C79 (P)

OLDFIELD GLASGOW G346 (P)

OLDFIELD NANCY A50 (P)

Dam: **THE COTTAGE CHERRY K18 (P)**

OME0 TRUMPER W29 (P)

THE COTTAGE CHERRY D6 (P)

TYCOLAH CHERRY Z27 (P)

Purchaser:

Price \$:

THE COTTAGE

May 2026 Hereford BREEDPLAN

GL	BW	200	400	600	MCW	Milk	SS	DC	Cwt	EMA	Rib	RUMP	RBY%	IMF%
-2.1	+5.3	+32	+53	+72	+85	+4	+2.4	+1.1	+39	+3.7	-0.1	-0.1	+1.3	-0.3
67%	75%	74%	73%	75%	63%	60%	72%	31%	57%	47%	50%	54%	38%	54%

Traits Observed: 200WT,400WT,600WT,Genomics

Genetic Tests: POLL C-Homozygous Polled (PcPc),IEF,HYF,DLF, Parent Verification: Sire: Verified, Dam: Not Tested

Notes: One of our favourites. Extra length, great muscle pattern and a real sires outlook. The Pacifier sons have bred very well

Lot 21

THE COTTAGE PACIFIER V005 (PP)

Ident: CTGV005

Born: 28/07/2024

KOANUI TECHNO 3062 (IMP NZL) (PP)
GRATHLYN PACIFIER (AI) (PP)
GRATHLYN CHANCE L046 (P)

Sire: **THE COTTAGE PACIFIER S011 (PP)**
DEBARRY INTERROGATOR C181 (P)
THE COTTAGE CHERRY J16 (P)
THE COTTAGE CHERRY D6 (P)



VALMA LINCOLN A27 (P)
VALMA FRONTLINE (AI) (P)
VALMA BOTHS MOONSHINE A120 (P)

Dam: **THE COTTAGE SUZIE K13 (P)**
BOWEN VINCENT V1 (S)
DEBARRY SUSIE Z205 (P)
DEBARRY SUSIE Q65 (P)

Purchaser:

Price \$:

May 2026 Hereford BREEDPLAN														
GL	BW	200	400	600	MCW	Milk	SS	DC	Cwt	EMA	Rib	RUMP	RBY%	IMF%
-1.6	+0.8	+18	+33	+41	+42	+8	+2.7	-0.3	+31	+2.0	+1.1	+0.9	+0.3	+0.4
70%	77%	76%	75%	76%	65%	63%	75%	34%	59%	50%	53%	57%	41%	57%

Traits Observed: 200WT,400WT,600WT,Genomics

Genetic Tests: POLL C-Homozygous Polled (PcPc),IEF,HYF,DLF, Parent Verification: Sire: Verified, Dam: Not Tested

Notes: Thick as a brick. Deep rich colour, very correct and a lovely quiet nature. Note the low birthweight.

Lot 22

THE COTTAGE LOGAN V017 (PP)

Ident: CTGV017

Born: 21/08/2024

KOANUI TECHNO 3062 (IMP NZL) (PP)
GRATHLYN PACIFIER (AI) (PP)
GRATHLYN CHANCE L046 (P)

Sire: **THE COTTAGE PACIFIER S011 (PP)**
DEBARRY INTERROGATOR C181 (P)
THE COTTAGE CHERRY J16 (P)
THE COTTAGE CHERRY D6 (P)



ALLENDALÉ BINGARA K184 (P)
TYCOLAH QUEENSCLIFF N029 (PP)
TYCOLAH IRISH MAID J140 (P)

Dam: **TYCOLAH MISS BELLE S032 (P)**
WARARBA PARK KANSAS K98 (PP)
WARARBA PARK MISS BELLE N130 (P)
WARARBA PARK MISS BELLE H181 (P)

Purchaser:

Price \$:

May 2026 Hereford BREEDPLAN														
GL	BW	200	400	600	MCW	Milk	SS	DC	Cwt	EMA	Rib	RUMP	RBY%	IMF%
-2.0	+7.4	+38	+57	+76	+61	+13	+2.6	-2.9	+37	+2.3	-0.1	-0.5	+1.3	-0.6
68%	75%	73%	72%	74%	63%	60%	73%	33%	56%	49%	52%	56%	40%	55%

Traits Observed: 200WT,400WT,600WT,Genomics

Genetic Tests: POLL C-Homozygous Polled (PcPc),IEF,HYF,DLC, Parent Verification: Sire: Verified, Dam: Not Tested

Notes: Another well muscled Pacifier son out of one of our favourite cows.



**LOT 1
TYCOLAH YANKEE
V053**



**LOT 4
TYCOLAH YEOMAN
V124**



**LOT 5
TYCOLAH YARRAMAN
V101**



**LOT 6
TYCOLAH YABUZUKA**



**LOT 8
TYCOLAH YEARNING
V175**



**LOT 9
TYCOLAH YARRA
V038**



**LOT 10
TYCOLAH YARRAN
V032**



**LOT 11
TYCOLAH YUKON
V084**



**LOT 14
TYCOLAH YARN
V064**



**LOT 15
TYCOLAH YACKA
V025**



**LOT 16
TYCOLAH YO YO
V109**



**LOT 17
TYCOLAH YARDARM
V078**



**LOT 18
TYCOLAH YANKO
V079**



**LOT 19
COTTAGE SOPRANO
V023**



**LOT 21
COTTAGE
V005**



**LOT 22
COTTAGE LOGAN
V017**



**LOT 23
COTTAGE ANZAC
V003**



**LOT 24
TYCOLAH YEDDA
V097**



**LOT 29
TYCOLAH YEARWOOD
V047**



**LOT 31
TYCOLAH YAMBA
V186**



**LOT 34
TYCOLAH YAWN
V062**



**LOT 37
TYCOLAH YAKOVA
V163**



**DAM OF LOT 26
TYCOLAH URSULA
M106**



**TYCOLAH UNDERCOVER
S117**

Lot 23

THE COTTAGE ANZAC V003 (PP)

Ident: CTGV003

Born: 15/07/2024

INJEMIRA ANZAC H006 (PP)

INJEMIRA ANZAC H006 M187 AI (AI) (PP)

INJEMIRA PLUM E212 (P)

Sire: **ECLIPSE ANZAC H006 R007 (AI) (PP)**

KANIMBLA DYNAMIC M063 (AI) (PP)

KANIMBLA RENEE P098 (P)

KANIMBLA RENEE M117 (P)

MCCOY 55M ABSOLUTE 49S (IMP CAN) (PP)

THE COTTAGE VANCOUVER K1 (AI) (P)

TYCOLAH TESSIESFAVORITE G124 (P)

Dam: **THE COTTAGE MOONBEAM P012 (P)**

VALMA FRONTLINE (AI) (P)

THE COTTAGE MOONBEAM L26 (P)

TYCOLAH MOONBEAM E91 (P)

THE COTTAGE

Purchaser:

Price \$:

May 2026 Hereford BREEDPLAN															
GL	BW	200	400	600	MCW	Milk	SS	DC	Cwt	EMA	Rib	RUMP	RBY%	IMF%	
-2.1	+7.2	+44	+67	+91	+94	+12	+3.1	-2.4	+59	+2.6	-0.2	+0.1	+1.2	-0.1	
68%	75%	73%	72%	74%	63%	59%	72%	31%	56%	48%	51%	55%	39%	54%	

Traits Observed: 200WT,400WT,600WT,Genomics

Genetic Tests: POLL C-Homozygous Polled (PcPc),IEF,HYF,DLF, Parent Verification: Sire: Verified, Dam: Not Tested

Notes: A long, deep bodied bull that continues to grow on and improve with age.

Lot 24

TYCOLAH YEDDA V097 (PP)

Ident: TPCV097

Born: 06/05/2024

Eye Pigment: 100/100

DAYS ELABORATE J59 (AI) (P)

GRATHLYN HOLYFIELD N019 (AI) (P)

GRATHLYN JEWESS L004 (AI) (PP)

Sire: **SUPPLE RAT A TAT TAT (PP)**

TYCOLAH KAPUTAR G27 (P)

SUPPLE ELMA 45 (P)

LINDENDALE ELMA 44 (P)

VALMA NAPOLEON II (AI) (P)

VALMA PRESTIGE E60 (P)

VALMA SILVER'S CORISANDE (AI) (P)

Dam: **TYCOLAH PERSONAL K103 (P)**

VALMA LOCH A100 (P)

TYCOLAH PERSONAL D15 (P)

TYCOLAH PERSONAL Y12 (P)

TYCOLAH

Purchaser:

Price \$:

May 2026 Hereford BREEDPLAN															
GL	BW	200	400	600	MCW	Milk	SS	DC	Cwt	EMA	Rib	RUMP	RBY%	IMF%	
+4.8	+8.2	+36	+60	+69	+76	+6	+3.5	-3.4	+42	+5.6	+0.7	+1.3	+0.8	+1.7	
71%	79%	77%	76%	78%	67%	62%	78%	35%	62%	55%	57%	62%	50%	60%	

Traits Observed: 200WT,600WT(x2),SS,FAT,EMA,IMF,Genomics

Genetic Tests: POLL C-Homozygous Polled (PcPc),IEF,HYF,DLF, Parent Verification: Sire: Verified, Dam: Not Tested

Notes: A very stylish long bodied bull on good bone with a well laid in shoulder. Very good carcass data on this bull with high actual IMF of 6.3 when scanned in February. His Dam has been a prolific breeder and is still in the stud at 12 years of age.

Lot 25 TYCOLAH YANG V059 (AI) (TW) (PP)

Ident: TPCV059

Born: 24/03/2024

Eye Pigment: 100/100

R LEADER 6964 (IMP USA) (PP)

KOANUI LAYER 6278 (P)

KOANUI CYNTHIA 6099 (P)

Sire: **KOANUI LAYER P028 (IMP NZL) (PP)**

KOANUI BARITONE 3600 (P)

KOANUI REGAL 6629 (P)

KOANUI REGAL 3111 (S)

WARARBA PARK FIRST CLASS F230 (S)

TYCOLAH OPAL L96 (PP)

TYCOLAH MIN D42 (P)

Dam: **TYCOLAH ASTERET S136 (AI) (P)**

TYCOLAH QUEENSCLIFF N029 (PP)

TYCOLAH ASTERET Q054 (P)

TYCOLAH ASTERET A129 (P)

Purchaser:

Price \$:



May 2026 Hereford BREEDPLAN

GL	BW	200	400	600	MCW	Milk	SS	DC	Cwt	EMA	Rib	RUMP	RBY%	IMF%
-2.9	+5.0	+42	+73	+102	+94	+16	+2.1	-1.5	+73	+6.2	-0.1	-0.4	+2.4	-0.7
75%	80%	78%	77%	79%	70%	67%	78%	42%	63%	57%	59%	64%	51%	62%

Traits Observed: BWT,200WT,600WT(x2),FAT,EMA,IMF,Genomics

Genetic Tests: POLL C-Homozygous Polled (PcPc),IEF,HYF,DLF, **Parent Verification:** Sire: Verified, Dam: Not Tested

Notes: BW 36kgs: A good easy doing loose skinned bull with great depth. Has high growth & carcass figures. A heifers first calf born unassisted. A great cow family.

Lot 26 TYCOLAH YELLOWSTONE V139 (TW) (PP)

Ident: TPCV139

Born: 28/08/2024

Eye Pigment: 100/100

WIRRUNA KALIMNA K326 (PP)

WIRRUNA QANTAS Q036 (AI) (PP)

WIRRUNA LETITIA M367 (P)

Sire: **WIRRUNA SETTLER S137 (AI) (PP)**

WIRRUNA KIRLEY K368 (ET) (PP)

WIRRUNA MADAM M476 (P)

WIRRUNA MADAM K254 (AI) (P)

COLUMBIAN SOUTHERN SON A18 (P)

WARARBA PARK FIRST CLASS F230 (S)

WARARBA PARK VICTORIA A94 (P)

Dam: **TYCOLAH URSULA M106 (P)**

EBBX CALGARY (AI) (ET) (P)

DEBARRY URSULA B230 (P)

DEBARRY URSULA Y161 (P)

Purchaser:

Price \$:



May 2026 Hereford BREEDPLAN

GL	BW	200	400	600	MCW	Milk	SS	DC	Cwt	EMA	Rib	RUMP	RBY%	IMF%
-0.6	+7.6	+48	+76	+113	+110	+22	+4.0	-4.6	+71	+5.3	+0.5	+0.6	+1.5	+1.5
73%	79%	77%	75%	77%	68%	64%	77%	40%	62%	55%	57%	61%	48%	61%

Traits Observed: 200WT,400WT,600WT,SS,FAT,EMA,IMF,Genomics

Genetic Tests: POLL C-Homozygous Polled (PcPc),IEF,HYF,DLF, **Parent Verification:** Sire: Verified, Dam: Not Tested

Notes: A very long growthy bull out of one of our best old cows (Ursula M106). Sire Potential. This bull has good feet & testicles and well laid in shoulder. His actual IMF in Feb 2025 was 6.5. Half brother sold in last years sale for \$12,000 to Tarakan.

Lot 27

TYCOLAH YOKEL V044 (PP)

Ident: TPCV044

Born: 11/03/2024

Eye Pigment: 100/100

WIRRUNA KALIMNA K326 (PP)

WIRRUNA QANTAS Q036 (AI) (PP)

WIRRUNA LETITIA M367 (P)

Sire: **WIRRUNA SETTLER S137 (AI) (PP)**

WIRRUNA KIRLEY K368 (ET) (PP)

WIRRUNA MADAM M476 (P)

WIRRUNA MADAM K254 (AI) (P)

COLUMBIAN SOUTHERN SON A18 (P)

WARARBA PARK FIRST CLASS F230 (S)

WARARBA PARK VICTORIA A94 (P)

Dam: **TYCOLAH CLIMAX N187 (P)**

STRATHVALLEY YARRAM (AI) (P)

TYCOLAH CLIMAX C60 (AI) (P)

TYCOLAH CLIMAX V50 (P)



Purchaser:

Price \$:

May 2026 Hereford BREEDPLAN

GL	BW	200	400	600	MCW	Milk	SS	DC	Cwt	EMA	Rib	RUMP	RBY%	IMF%
-5.7	+3.7	+42	+73	+98	+93	+19	+3.3	-5.5	+72	+5.4	+0.2	+0.7	+1.8	+1.1
72%	79%	77%	75%	77%	68%	64%	76%	39%	61%	55%	57%	61%	49%	60%

Traits Observed: CE,BWT,200WT,600WT(x2),FAT,EMA,IMF,Genomics

Genetic Tests: POLL C-Homozygous Polled (PcPc),IEF,HYF,DLF, **Parent Verification:** Sire: Verified, Dam: Not Tested

Notes: BW38kgs: Another high performing moderate birth weight bull with a good Sirey head. Yokel has very early gestation length & High calving ease. Another good IMF bull out of a very good Climax cow. She is the dam of Uluru S007 who sold for \$24,000 as a yearling to Larry Bidgood and Vulture T055 who sold for \$16,000 to Oakview.

Lot 28

TYCOLAH YOUNG V099 (PP)

Ident: TPCV099

Born: 07/05/2024

Eye Pigment: 100/100

WIRRUNA KALIMNA K326 (PP)

WIRRUNA QANTAS Q036 (AI) (PP)

WIRRUNA LETITIA M367 (P)

Sire: **WIRRUNA SETTLER S137 (AI) (PP)**

WIRRUNA KIRLEY K368 (ET) (PP)

WIRRUNA MADAM M476 (P)

WIRRUNA MADAM K254 (AI) (P)

THE RANCH TIPPERARY M005 (AI) (PP)

THE RANCH QUALIFIER Q033 (PP)

GRASSY MOUNTAIN NOBLE GIRL 411 (P)

Dam: **TYCOLAH MARSHALL LASS T039 (PP)**

JDH 4X ULTIMATE 236Z 94B (IMP CAN) (P)

TYCOLAH MARSHALL LASS P117 (AI) (P)

TYCOLAH MARSHALL LASS D49 (P)



Purchaser:

Price \$:

May 2026 Hereford BREEDPLAN

GL	BW	200	400	600	MCW	Milk	SS	DC	Cwt	EMA	Rib	RUMP	RBY%	IMF%
-2.0	+6.7	+49	+68	+91	+75	+19	+2.7	-2.8	+58	+4.9	+1.3	+1.8	+0.8	+1.1
72%	79%	77%	75%	77%	67%	63%	77%	37%	60%	54%	56%	60%	46%	59%

Traits Observed: BWT,200WT,600WT(x2),SS,FAT,EMA,IMF,Genomics

Genetic Tests: POLL C-Homozygous Polled (PcPc),IEF,HYF,DLF, **Parent Verification:** Sire: Verified, Dam: Verified

Notes: BW:38kgs Once again another high performing homozygous poll Settler bull out of a very good young cow. This deep bodied bull has plenty of volume & a good head. Ideal 200/400-day weights for the supermarket trade with good fat cover & IMF. A heifer's first calf born unassisted.

Lot 29

TYCOLAH YEARWOOD V047 (PP)

Ident: TPCV047

Born: 13/03/2024

Eye Pigment: 100/100

ALLENDALE BINGARA K184 (P)

TYCOLAH QUEENSCLIFF N029 (PP)

TYCOLAH IRISH MAID J140 (P)

Sire: **TYCOLAH UNDERCOVER S117 (PP)**

WARARBA PARK FIRST CLASS F230 (S)

TYCOLAH URSULA M096 (PP)

TYCOLAH URSULA F159 (P)

VCR 993W ULTIMATE 236Z (P)

JDH 4X ULTIMATE 236Z 94B (IMP CAN) (P)

JDH AH VIOLETS RECRUIT 4X ET (P)

Dam: **TYCOLAH MARSHALL LASS P117 (AI) (P)**

KARINA CHERRY Z8 (PP)

TYCOLAH MARSHALL LASS D49 (P)

TYCOLAH MARSHALL LASS V89 (P)



Purchaser:

Price \$:

May 2026 Hereford BREEDPLAN

GL	BW	200	400	600	MCW	Milk	SS	DC	Cwt	EMA	Rib	RUMP	RBY%	IMF%
+1.2	+2.7	+28	+43	+60	+35	+3	+1.1	-1.8	+46	+2.6	+2.5	+2.9	-0.4	+1.4
72%	79%	77%	75%	77%	66%	63%	77%	35%	61%	55%	57%	61%	49%	60%

Traits Observed: CE,BWT,200WT,600WT(x2),FAT,EMA,IMF,Genomics

Genetic Tests: POLL C-Homozygous Polled (PcPc),IEF,HYF,DLF, **Parent Verification:** Sire: Verified, Dam: Not Tested

Notes: BW39kgs: A good structured, good colored Undercover bull on excellent feet. His dam is the Granddam of the previous lot. Once again good IMF.

Lot 30

TYCOLAH YOHO V087 (PP)

Ident: TPCV087

Born: 10/04/2024

Eye Pigment: 100/100

WIRRUNA KALIMNA K326 (PP)

WIRRUNA QANTAS Q036 (AI) (PP)

WIRRUNA LETITIA M367 (P)

Sire: **WIRRUNA SETTLER S137 (AI) (PP)**

WIRRUNA KIRLEY K368 (ET) (PP)

WIRRUNA MADAM M476 (P)

WIRRUNA MADAM K254 (AI) (P)

ALLENDALE YALLARO I 2 (AI) (TW) (PP)

ALLENDALE BINGARA K184 (P)

ALLENDALE CORA C81 (P)

Dam: **TYCOLAH ADVANCE T049 (PP)**

SEAGROVE DYNAMO (P)

TYCOLAH ADVANCE G64 (P)

TYCOLAH ADVANCE E06 (P)



Purchaser:

Price \$:

May 2026 Hereford BREEDPLAN

GL	BW	200	400	600	MCW	Milk	SS	DC	Cwt	EMA	Rib	RUMP	RBY%	IMF%
-4.3	+4.2	+44	+69	+98	+95	+17	+2.5	-4.9	+67	+4.0	+0.3	+0.4	+1.4	+0.7
72%	79%	77%	76%	78%	68%	65%	78%	39%	61%	55%	57%	61%	48%	60%

Traits Observed: BWT,200WT,600WT(x2),SS,FAT,EMA,IMF,Genomics

Genetic Tests: POLL C-Homozygous Polled (PcPc),IEF,HYF,DLF, **Parent Verification:** Sire: Verified, Dam: Verified

Notes: BW:37kgs: A heifers first calf, born unassisted. A long-bodied Settler bull with a good growth rate and well laid-in shoulder.

Lot 31 TYCOLAH YAMBA V186 (PP)

Ident: TPCV186

Born: 08/10/2024

Eye Pigment: 100/100

ALLEDALE BINGARA K184 (P)

TYCOLAH QUEENSCLIFF N029 (PP)

TYCOLAH IRISH MAID J140 (P)

Sire: **TYCOLAH UNDERCOVER S117 (PP)**

WARARBA PARK FIRST CLASS F230 (S)

TYCOLAH URSULA M096 (PP)

TYCOLAH URSULA F159 (P)

COLUMBIAN SOUTHERN SON A18 (P)

WARARBA PARK FIRST CLASS F230 (S)

WARARBA PARK VICTORIA A94 (P)

Dam: **TYCOLAH COUNTESS M117 (P)**

KARINA CHERRY Z8 (PP)

TYCOLAH COUNTESS C34 (P)

TYCOLAH COUNTESS W72 (P)



Purchaser:

Price \$:

May 2026 Hereford BREEDPLAN

GL	BW	200	400	600	MCW	Milk	SS	DC	Cwt	EMA	Rib	RUMP	RBY%	IMF%
+0.9	+6.8	+41	+56	+82	+72	+9	+1.9	-3.0	+58	+0.0	+1.8	+2.0	-0.6	+0.6
74%	82%	80%	78%	80%	70%	68%	79%	39%	65%	59%	61%	65%	51%	63%

Traits Observed: BWT,200WT,400WT,600WT,SS,FAT,EMA,IMF,Genomics

Genetic Tests: POLL C-Homozygous Polled (PcPc),IEF,HYF,DLF, Parent Verification: Sire: Verified, Dam: Not Tested

Notes: BW48kgs: A typical Undercover with good conformation and head on good feet. His dam is one of our best First Class cows. She was the dam of Countess S113 who sold for \$10,000 at our female sale last year to Noel and Rosie James Wandoan and Walhallow who sold for \$12,000 to Bill Lambert at last years sale.

Lot 32 TYCOLAH YOUNG LOVE V147 (PP)

Ident: TPCV147

Born: 01/09/2024

Eye Pigment: 100/100

ALLEDALE BINGARA K184 (P)

TYCOLAH QUEENSCLIFF N029 (PP)

TYCOLAH IRISH MAID J140 (P)

Sire: **TYCOLAH UNDERCOVER S117 (PP)**

WARARBA PARK FIRST CLASS F230 (S)

TYCOLAH URSULA M096 (PP)

TYCOLAH URSULA F159 (P)

WARARBA PARK FIRST CLASS F230 (S)

TYCOLAH PRIZE FIGHTER M092 (PP)

TYCOLAH CORISANDE G32 (P)

Dam: **TYCOLAH GRACE Q119 (P)**

TYCOLAH LANDMASTER H66 (S)

TYCOLAH GRACE L61 (P)

TYCOLAH GRACE H134 (P)



Purchaser:

Price \$:

May 2026 Hereford BREEDPLAN

GL	BW	200	400	600	MCW	Milk	SS	DC	Cwt	EMA	Rib	RUMP	RBY%	IMF%
-1.9	+2.9	+27	+45	+62	+58	+11	-0.1	-1.0	+45	+1.0	+1.3	+1.6	+0.3	+0.3
72%	80%	78%	77%	78%	67%	63%	78%	36%	63%	56%	58%	62%	51%	61%

Traits Observed: BWT,200WT,400WT,600WT,SS,FAT,EMA,IMF,Genomics

Genetic Tests: POLL C-Homozygous Polled (PcPc),IEF,HYF,DLF, Parent Verification: Sire: Verified, Dam: Not Tested

Notes: BW42.5kgs: A good easy-doing Undercover bull on good bone. Dam has an excellent udder and has had bulls sell up to \$10,000

Lot 33**TYCOLAH YOKE V117 (PP)**

Ident: TPCV117

Born: 09/08/2024

Eye Pigment: 100/100

DAYS ELABORATE J59 (AI) (P)

GRATHLYN HOLYFIELD N019 (AI) (P)

GRATHLYN JEWESS L004 (AI) (PP)

Sire: **SUPPLE RAT A TAT TAT (PP)**

TYCOLAH KAPUTAR G27 (P)

SUPPLE ELMA 45 (P)

LINDENDALE ELMA 44 (P)

ALLENDALE YALLARO1 2 (AI) (TW) (PP)

ALLENDALE BINGARA K184 (P)

ALLENDALE CORA C81 (P)

Dam: **TYCOLAH URSULA Q087 (P)**

WARARBA PARK FIRST CLASS F230 (S)

TYCOLAH URSULA L98 (P)

TYCOLAH URSULA F81 (P)

Purchaser:

Price \$:

**May 2026 Hereford BREEDPLAN**

GL	BW	200	400	600	MCW	Milk	SS	DC	Cwt	EMA	Rib	RUMP	RBY%	IMF%
-1.0	+7.8	+41	+62	+80	+81	+1	+3.3	-4.0	+47	+3.3	+0.0	+0.3	+1.1	+0.1
69%	79%	77%	75%	78%	66%	61%	77%	35%	61%	55%	57%	62%	51%	59%

Traits Observed: BWT,200WT,400WT,600WT,SS,FAT,EMA,IMF,Genomics**Genetic Tests:** POLL C-Homozygous Polled (PcPf),IEF,HYF,DLF, **Parent Verification:** Sire: Verified, Dam: Not Tested**Notes:** BW46kgs: A long-bodied Rat A Tat Tat bull with good skin and head. His two half-sisters retained in the stud are proving to be very good breeders.**Lot 34****TYCOLAH YAWN V062 (AI) (PP)**

Ident: TPCV062

Born: 25/03/2024

Eye Pigment: 100/100

R LEADER 6964 (IMP USA) (PP)

KOANUI LAYER 6278 (P)

KOANUI CYNTHIA 6099 (P)

Sire: **KOANUI LAYER P028 (IMP NZL) (PP)**

KOANUI BARITONE 3600 (P)

KOANUI REGAL 6629 (P)

KOANUI REGAL 3111 (S)

WARARBA PARK FIRST CLASS F230 (S)

TYCOLAH PRIZE FIGHTER M092 (PP)

TYCOLAH CORISANDE G32 (P)

Dam: **TYCOLAH CORISANDE S074 (TW) (P)**

TYCOLAH LOW KEY H34 (P)

TYCOLAH CORISANDE K47 (P)

TYCOLAH CORISANDE G32 (P)

Purchaser:

Price \$:

**May 2026 Hereford BREEDPLAN**

GL	BW	200	400	600	MCW	Milk	SS	DC	Cwt	EMA	Rib	RUMP	RBY%	IMF%
-4.5	+1.8	+26	+42	+62	+46	+17	+1.1	-3.2	+38	+2.6	+1.5	+2.2	+0.6	-0.1
76%	80%	78%	77%	79%	70%	67%	78%	42%	63%	56%	59%	63%	52%	62%

Traits Observed: GL,CE,BWT,200WT,600WT(x2),FAT,EMA,IMF,Genomics**Genetic Tests:** POLL C-Homozygous Polled (PcPc),IEF,HYF,DLF, **Parent Verification:** Sire: Verified, Dam: Not Tested**Notes:** BW:34kgs: A heifer's first calf with early Gestation Length and low birthweight and should make an ideal heifer bull. A beautiful, skinned bull who would leave good vealers.

Lot 35

TYCOLAH YASS V081 (AI) (PP)

Ident: TPCV081

Born: 31/03/2024

Eye Pigment: 100/100

R LEADER 6964 (IMP USA) (PP)

KOANUI LAYER 6278 (P)

KOANUI CYNTHIA 6099 (P)

Sire: **KOANUI LAYER P028 (IMP NZL) (PP)**

KOANUI BARITONE 3600 (P)

KOANUI REGAL 6629 (P)

KOANUI REGAL 3111 (S)

ALLENDALE BINGARA K184 (P)

TYCOLAH QUEENSCLIFF N029 (PP)

TYCOLAH IRISH MAID J140 (P)

Dam: **TYCOLAH ADVANCE S157 (P)**

MOUNTAIN VALLEY JINX J74 (PP)

TYCOLAH ADVANCE M065 (P)

TYCOLAH ADVANCE H196 (P)



Purchaser:

Price \$:

May 2026 Hereford BREEDPLAN

GL	BW	200	400	600	MCW	Milk	SS	DC	Cwt	EMA	Rib	RUMP	RBY%	IMF%
-1.6	-0.6	+23	+42	+55	+16	+20	+2.2	-6.6	+47	+3.9	+4.0	+6.5	-1.2	+1.8
76%	79%	78%	77%	79%	69%	67%	78%	41%	63%	57%	59%	63%	51%	62%

Traits Observed: GL,CE,BWT,200WT,600WT(x2),SS,EMA,IMF,Genomics

Genetic Tests: POLL C-Homozygous Polled (PcPc),IEF,HYF,DLF, Parent Verification: Sire: Verified, Dam: Not Tested

Notes: BW:31kgs An early maturing low birthweight ideal heifer bull. Heifer's first calf born unassisted. Note the high IMF.

Lot 36

TYCOLAH YORK V168 (PP)

Ident: TPCV168

Born: 18/09/2024

Eye Pigment: 100/100

ALLENDALE BINGARA K184 (P)

TYCOLAH QUEENSCLIFF N029 (PP)

TYCOLAH IRISH MAID J140 (P)

Sire: **TYCOLAH UNDERCOVER S117 (PP)**

WARARBA PARK FIRST CLASS F230 (S)

TYCOLAH URSULA M096 (PP)

TYCOLAH URSULA F159 (P)

WARARBA PARK FIRST CLASS F230 (S)

TYCOLAH PRIZE FIGHTER M092 (PP)

TYCOLAH CORISANDE G32 (P)

Dam: **TYCOLAH CORISANDE S092 (P)**

BBSF 101N WRANGLER 29W (IMP CAN) (PP)

TYCOLAH CORISANDE L118 (AI) (P)

TYCOLAH CORISANDE F69 (P)



Purchaser:

Price \$:

May 2026 Hereford BREEDPLAN

GL	BW	200	400	600	MCW	Milk	SS	DC	Cwt	EMA	Rib	RUMP	RBY%	IMF%
+1.4	+7.4	+35	+47	+78	+72	+11	+1.1	-1.8	+49	+2.6	+1.7	+2.6	+0.3	+0.4
72%	80%	77%	76%	78%	67%	63%	78%	36%	62%	56%	58%	62%	49%	61%

Traits Observed: BWT,200WT,400WT,600WT,SS,FAT,EMA,IMF,Genomics

Genetic Tests: POLL C-Homozygous Polled (PcPc),IEF,HYF,DLF, Parent Verification: Sire: Verified, Dam: Not Tested

Notes: BW: 45kgs: A very stylish rich colored, well-muscled bull with a good head & eye.

Lot 37

TYCOLAH YAKOVA V163 (PP)

Ident: TPCV163

Born: 12/09/2024

Eye Pigment: 100/100

ALLENDALE BINGARA K184 (P)

TYCOLAH QUEENSCLIFF N029 (PP)

TYCOLAH IRISH MAID J140 (P)

Sire: **TYCOLAH UNDERCOVER S117 (PP)**

WARARBA PARK FIRST CLASS F230 (S)

TYCOLAH URSULA M096 (PP)

TYCOLAH URSULA F159 (P)

MOUNTAIN VALLEY LEIUTENANT L1 (P)

TYCOLAH QUARTERBACK N134 (P)

TYCOLAH ADVANCE H196 (P)

Dam: **TYCOLAH CASSA R042 (P)**

TYCOLAH LYNWOOD H184 (P)

TYCOLAH CASSA N036 (P)

TYCOLAH CASSA J164 (P)



Purchaser:

Price \$:

May 2026 Hereford BREEDPLAN

GL	BW	200	400	600	MCW	Milk	SS	DC	Cwt	EMA	Rib	RUMP	RBY%	IMF%
-1.1	+5.4	+39	+58	+82	+70	+22	+0.4	+2.5	+63	+4.1	-0.5	-0.8	+2.0	+0.6
69%	79%	76%	75%	77%	65%	60%	75%	34%	61%	54%	56%	60%	45%	59%

Traits Observed: BWT,200WT,400WT(x2),600WT(x2),SS,FAT,EMA,IMF,Genomics

Genetic Tests: POLL C-Homozygous Polled (PcPc),IEF,HYF,DLF, Parent Verification: Sire: Verified, Dam: Not Tested

Notes: BW39kgs: A beautifully balanced young bull out of a good uddered Cassa cow.

Lot 38

TYCOLAH YAHOO V125 (P)

Ident: TPCV125

Born: 15/08/2024

Eye Pigment: 100/100

DAYS ELABORATE J59 (AI) (P)

GRATHLYN HOLYFIELD N019 (AI) (P)

GRATHLYN JEWESS L004 (AI) (PP)

Sire: **SUPPLE RAT A TAT TAT (PP)**

TYCOLAH KAPUTAR G27 (P)

SUPPLE ELMA 45 (P)

LINDENDALE ELMA 44 (P)

TYCOLAH LYNWOOD H184 (P)

TYCOLAH OAKWOOD L26 (P)

TYCOLAH TESSIES FAVORITE E42 (P)

Dam: **TYCOLAH ADVANCE P098 (P)**

MCCOY 55M ABSOLUTE 49S (IMP CAN) (PP)

TYCOLAH ADVANCE K15 (AI) (P)

TYCOLAH ADVANCE G118 (H)



Purchaser:

Price \$:

May 2026 Hereford BREEDPLAN

GL	BW	200	400	600	MCW	Milk	SS	DC	Cwt	EMA	Rib	RUMP	RBY%	IMF%
-3.1	+6.3	+36	+59	+76	+80	+12	+3.2	-4.7	+46	+5.7	+0.1	+0.1	+2.2	-0.1
71%	79%	77%	76%	78%	67%	61%	78%	34%	61%	55%	57%	62%	50%	59%

Traits Observed: BWT,200WT,400WT,600WT,SS,FAT,EMA,IMF,Genomics

Genetic Tests: POLL C-Heterozygous Polled (HPc),IEF,HYF,DLF, Parent Verification: Sire: Verified, Dam: Not Tested

Notes: BW43kgs: A long rich colored bull with well laid in shoulders.



FOR ALL YOUR ARTIFICIAL BREEDING NEEDS

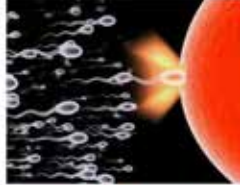
Artificial Insemination Ultrasound Preg Testing Semen Collection Semen & Embryo Storage Ear Tags Supplements



www.northernab.com.au



brendan@northernab.com.au



02 6545 2465



0427 417 148



Simon Koopman

Mitch Reed

Ph: 0267 821029

simon@stockandcrop.com.au

72 Queen St, Barraba NSW 2347

With the competitive advantage of being a member of Australia's largest & fastest growing independent buying group A.I.R.R. (Australian Independent Rural Retailers), your locally owned & run Rural Merchandise Shop offers a diverse range of products for Agricultural & Farming enterprises covering Animal Health, Farm Chemicals, Pasture Seed, Fertilizer, Produce, Fencing, Water Management, Oils, Shearing Supplies, etc ...

Come in and see Simon or Mitch for friendly service & advice.



Who are we and what can we do for you?



At Hancocks Accountants, we make doing business easy.

With over **40 years'** experience serving as accountants and business advisors in Tamworth, we have built up an extensive portfolio of clients working in industries such as hospitality, retail, manufacturing, farming, transport, construction, real estate, medical, finance and insurance.

We help people do business. For new businesses and start-ups, we provide the expertise, advice, and online tools to help bring your business to market.

We help with implementation of business structure, compliance, payroll, superannuation and more.

For existing businesses, we help with transitioning to online accounting, set up rule-based reconciliation to simplify BAS and provide staff training.

Our team is local and has strong agricultural and entrepreneurial connections to the region; we know the issues facing local business first-hand. We take the time to listen to our clients and translate observations into practical, useful business recommendations to help businesses prosper and grow. We explain and minimise the complexity of any situation by using clear and simple terminology.

These are the qualities that make us unique, and qualities our clients have come to expect.

Ph: (02) 6766 4716

www.hancocks.com.au

82-84 Brisbane Street

TAMWORTH NSW 2340

RUMEVITE GROW & SHOW DRYFEED

"PREPARE YOUR STUD CATTLE PROPERLY"



Rumevite Grow & Show Dry Feed is a pelleted grain ration for the preparation of stud cattle for show and sale when fed with mature dry pasture or low protein hay

- Palatable grain ration presented as a pellet
- Customised ingredients suitable for preparing stud cattle
- Appropriate level of bypass protein
- Balanced levels of calcium, phosphorous, trace minerals and vitamins
- Contains added fats & oils to enhance coat shine
- Contains Rumensin® to improve growth rates and feed conversion efficiency
- Contains Acid Buf®, a natural rumen buffer

Available in: 20kg, Bulk Bags and Bulk

For more information please contact your local Ridley Territory Manager:

- **Peter Mooney** on **0428 234 292**
- **Tim Brown** on **0408 667 129**



www.ridleyagriproducts.com.au



SCIENCE. GROWTH. PROFIT.

DELTA



AGRIBUSINESS



David Crowley
Delta Ag Barraba
0428 294 977

We partner with farmers
to make the **right** decisions.



Barraba Rural Traders

HOME Hardware

It all starts at Home



THE COTTAGE

BUYERS INSTRUCTION SLIP

(No verbal instructions will be accepted)

BUYER REGISTRATION NO.

BUYERS PIC:

Trading Name:

.....

Address: :

.....

Phone:

Email:

Send Account to:

.....

Lots Purchased:

.....

Transfer Required: YES / NO

Agree to details released to Herefords Australia: YES / NO

Delivery Arrangments:

.....

.....

SIGNATURE OF AGENT OR BUYER:

Date: 17/07/2026



This form must be completed and lodged with Nutrien Ag Agents at completion of Sale.



Lot 7
TYCOLAH YAZIR
V172



Lot 20
COTTAGE PACIFIER
V006

