

Our Lady of Perpetual Help Parish



Parish Mission Statement

Our Lady of Perpetual Help Catholic Parish is a faith-filled community for all cultures and ages dedicated to Building the Kingdom of God. We come closer to God by following Jesus Christ through His Word and the Sacraments. Through the Holy Spirit and with the intercession of our Blessed Mother, we provide a sense of belonging to all God's people through prayer, service, and the sharing of our gifts for the praise and glory of God.

4TH SUNDAY OF EASTER APRIL 26, 2026



The Good Shepherd

*"Amen, amen, I say to you,
I am the gate
for the sheep...
Whoever enters through
me will be saved..."*

John 10: 7 and 9

Liturgical Readings

Monday, April 27
Monday of the 4th Week of Easter
1st Reading: Acts 11: 1-18
Gospel: John 10: 11-18

Tuesday, April 28
Tuesday of the 4th Week of Easter
1st Reading: Acts 11: 19-26
Gospel: John 10: 22-30

Wednesday, April 29
Wednesday of the 4th Week of Easter
1st Reading: Acts 12: 24-13:5a
Gospel: John 12: 44-50

Thursday, April 30
Thursday of the 4th Week of Easter
1st Reading: Acts 13: 13-25
Gospel: John 13: 16-20

Friday, May 1
Friday of the 4th Week of Easter
1st Reading: Acts 13: 26-33
Gospel: John 14: 1-6

Saturday, May 2
Saturday of the 4th Week of Easter
1st Reading: Acts 13: 44-52
Gospel: John 14: 7-14

**Next Sunday's Readings
May 3, 2026
5th Sunday of Easter**

1st Reading: Acts 6: 1-7
2nd Reading: 1 Peter 2: 4-9
Gospel: John 14:1-12

- ♦ Fr. Edmundo Naceno Barut, Pastor ♦ Fr. Preston "PJ" Castro, Parochial Vicar
♦ Eric Kim, Rey Dinulong, and Ronald Paglinawan (Ret.) Deacons

THAT THEY MAY BE ONE!

Our Lady of Perpetual Help Parish

NEW Office Hours: Monday-Friday, 9am-3pm
Phone: (808) 689-8681 Weekends & Holidays: Closed
Fr. Edmundo Barut, Pastor, ext. 102

Fr. Preston "PJ" Castro, Parochial Vicar, ext. 103
Eric Kim, Deacon & Rey Dinulong, Deacon & Ron Paglinawan, Deacon (Ret.), 100
Mela Kim, Office Coordinator, ext. 101
Emily Tui, Receptionist/Secretary, ext. 100
Julia Torres, Director of Religious Education, ext. 107
Edwin Albano, Bookkeeper, ext. 104
Hollie Arquette, Janitor & Lordy Luis, School Groundskeeper ext. 100

OLPH Ministries & Groups

LITURGICAL ACTIVITIES/MINISTRIES

Adoration w/Benediction, Every First Friday, 7am & Wednesday, 5pm (Ch)
Infant Baptism, 1st Saturday of Month 1pm & 3rd Saturday of the Month 10am (Ch)
Combined Choir Practice, (to be announced)
Liturgy Committee Mtg, (to be announced)
Marian Devotions & Novena to the Holy Trinity, 1st Saturday, 8:30am (Ch)
Rosary to Our Lady of Perpetual Help, M-F 7:50am (Ch)
Sacred Heart Society, 1st Sunday, 9:00am Mass (Ch)
Samoan Choir practice, (to be announced)

PARISH ADMINISTRATION

Staff Mtg, [as needed] (Parish Office)

PARISH MAINTENANCE

Church Cleaning, Every Saturday morning after the 7:00am Mass (Ch)
Parking Security (to be announced)
Repair & Maintenance Committee (as needed)

YOUNG MINISTRY

Life Teen (Grades 9-12) & Edge Ministry Sunday at 3pm (Church)

RELIGIOUS EDUCATION CLASSES

OCIA-Adults Every Saturday, 3pm (School Lanai)
Religious Ed. Classes, PreK-8th, Every Sunday, 1:00pm (Church)

RELIGIOUS ORGANIZATIONS

Filipino Catholic Club, 1st Sunday - 8:15am (School Lanai)
Knights of Columbus, 1st Saturday - 9am (Conf. Rm 2)
Samoan Ministry (to be announced)

SOCIAL MINISTRIES

Bereavement Ministry
Food Distribution, Last Saturday, 9:00am-11:00am (School ground)
Health Ministry, Blood Pressure Screening every 3rd Sunday @ All Masses (Ch)
Non-Perishable Food Collection, Every Saturday & Sunday, All Masses (Ch)
Respect Life Ministry (to be announced)
Seniors Exercise (low impact), Every Thursday, 9:00am (Conf. Rm 2)

Interested in joining a ministry? Please call the Church Office for more information and Point of Contact Person.

Parish Schedule This Week

SUNDAY, April 26, 2026

4th Sunday of Easter

7am, 9am, 11am & 5pm Masses - (Ch)

1:00pm: CCD Classes

3:00pm: EDGE and LifeTeen

MONDAY, April 27, 2026

7:50am: Rosary (Ch)

8:15am: Sacrifice of the Holy Mass (Ch)

TUESDAY, April 28, 2026

7:50am: Rosary (Ch)

8:15am: Sacrifice of the Holy Mass (Ch)

WEDNESDAY, April 29, 2026

7:50am: Rosary (Ch)

8:15am: Sacrifice of the Holy Mass (Ch)

5:00pm: Holy Hour (Ch)

THURSDAY, April 30, 2026

7:50am: Rosary (Ch)

8:15am: Sacrifice of the Holy Mass (Ch)

FRIDAY, May 1, 2026

7:50am: Rosary (Ch)

8:15am: Sacrifice of the Holy Mass (Ch)

SATURDAY, May 2, 2026

6:30am: Rosary (Ch)

7:00am: Sacrifice of the Holy Mass (Ch)

5:00pm: Sacrifice of the Holy Mass - Vigil (Ch)

SUNDAY, May 3, 2026

5th Sunday of Easter

7am, 9am, 11am & 5pm Masses (Ch)

1:00pm: CCD Classes (Ch)

3:00pm: EDGE and LifeTeen (Ch)

Mahalo For Sharing Your Treasures

April 11 & 12, 2026 Collections

Regular Offering (envelopes)	\$ 3,807.00
Regular Offering (loose)	\$ 2,717.00
Regular Offering (Credit Card)	\$ 100.00
Mahele Na Makana Collection	<u>\$ 1,624.00</u>
Sub Total:	\$ 8,248.00*

Annunciation	\$ 100.00
Easter Sunday	\$ 267.00
Holy Thursday	\$ 65.00
Building Fund (Envelopes)	\$ 2,184.00
Building Fund (Credit Card)	\$ 65.00
Donations - Easter Flowers	\$ 20.00
Donations - Adoration of the Cross	\$ 80.00
Funeral	\$ 600.00
Catholic Women's Circle	\$ 231.83
Mass Intentions	\$ 670.00
Rice Bowl	\$ 39.03
Seminarian Fund	<u>\$ 15.00</u>
Sub Total:	\$ 4,336.86*
Total 1:	\$ 12,584.86*
Total 2:	\$ 8,804.50**
Grand Total:	\$21,389.36

Thank you very much for your Stewardship



STEWARDSHIP IN OLPH

A Spirituality
and way of Life



ParishSOFT Collections April 13-17, 2026

Regular Offering	\$ 4,781.50
Mahele Na Makana Collection	<u>\$ 637.00</u>
Sub Total:	\$ 5,418.50
Building Fund	\$ 2,270.00
Easter	\$ 395.00
Holy Thursday	\$ 275.00
Good Friday/Holy Land	\$ 360.00
Rice Bowl	\$ 85.00
All Souls	<u>\$ 1.00</u>
Sub Total:	\$ 3,386.00
Totals (2):	\$ 8,804.50**

Pope Leo: Trustworthy Guides Needed to foster Vocations

From the Holy Father's Message on World Day of Prayer for Vocations

- "The discovery of our vocations comes about as the result of a journey of discernment. That journey is never solitary, but develops with a Christian community and as a part of that community . . .
- "Pastoral ministers and vocation directors, especially spiritual directors, should readily accompany young people with the hope, patience, and trust that reflect God's own 'pedagogy.' They should be capable of listening to them respectfully and sympathetically, and show themselves trustworthy, wise and helpful guides, ever attentive to discerning the signs of God's presence in their journey . . .
- I urge that every effort be made to foster vocations in the various spheres of human life and activity, and to help individuals to be spiritually open to the Lord's voice. It is important, then that adequate space given to the accompaniment of vocations in educational and pastoral planning."

From the Diocesan Director for Vocations, Fr. Alfred Guerrero:

"I encourage you in a special way during this time to foster a culture of vocation within your communities. Pray intentionally for vocations at Mass, invite conversations with young people about discerning God's will, and be attentive to those who may be quietly considering a call to priesthood or religious life. A simple word of encouragement or a personal invitation can be the seed through which God brings forth abundant fruit.

Let us also remember that vocations are born from prayer. May our parishes become places where silence, discernment, and trust in God's plan are nurtured. United in prayer, we entrust this intention to the Lord of the harvest, confident that He continues to call laborers into His vineyard."

From your Pastor, Fr. Ed:

April 25, the Feast of St. Mark, is always a special day for me as a priest. It was thirty four (34) years ago when I was ordained to the priesthood, 25 April 1992. I thank God for His gift of the priesthood on me and I thank you all, my dear parishioners, because I have been blessed to serve in our parish, Our Lady of Perpetual Help, since July of 2012 until now and beyond. I ask you to pray for me as I do pray for you!

Catholic Ministries Annual Appeal UPDATE

If you're still considering making a donation, it's not to late. To participate and make your gift:

- Complete a pledge form. (*Available at the church entrance or parish office*)
It can be a one-time or a recurring gift
- Or you can scan the QR Code here >
- Or visit the web: Appeal.CatholicHawaii.org.



Be sure that your gift is designated to **Our Lady of Perpetual Help Parish** in Ewa Beach.

***Your donation supports the vital ministries of our Church across our Islands.
Thank you for your prayerful support and generosity!***

Please Call the Office First

OLPH Parish Info

Getting Married?

Wedding preparations begin at least 6 months PRIOR to the actual wedding.

Funeral Arrangements?

Call WHEN you meet with the mortuary to make funeral arrangements.

Homebound Ministry

Inform the parish office with the name, address and phone number of the person who would like to receive Communion at home.

Planning a Baptism

Call BEFORE making any baptism celebration plans

Sunday Masses

7am, 9am, 11am & 5pm

Vigil Mass

Saturday, 5pm

Weekday Daily Masses

Mon-Fri, 8:15am
Saturday, 7am

Holy Rosary

Monday through Sunday preceding the daily and Sunday Masses

Sacrament of Reconciliation

Sat, 4pm-4:30pm or by appointment

Adoration with Benediction

Every First Friday at 7am
Every Wednesday at 5pm

RELIGIOUS EDUCATION!!

Remi, “you kissed us sad adieu...”

Remi Cabrera, known to her students as Miss Cabrera, was called home by the Lord on Tuesday, April 14, 2026. Remi taught at OLPH School for 39 years. With that length of service, hundreds of children passed through her classrooms. She also served in our parish’s Catechetical Ministry first as a catechist after which she served as CCD Coordinator when the Pastor at the time, Fr. George Maddock, asked her to take the place of the coordinator who moved to the mainland. She continued to hold the position until about 2005 to focus her time on being a teacher at OLPH School. Nevertheless, Remi continued to do the work she loved most – teaching children about God and God’s love for them especially in Holy Communion. Remi kept going in teaching the Sacraments of Reconciliation, Confirmation, and First Communion until her illness prevented her from doing so. Her last group of children, whom Fr. Preston “PJ” Castro inherited, will receive Confirmation and First Holy Communion on May 31 this year.

Besides sacraments and academics, Remi also loved to teach Filipino folk dances to her students and parishioners. Her students or their parents most likely kept pictures of the children in their Filipino costumes. In addition, Remi was very much a part of parish life having served on various committees and ministries such as Parish Pastoral Council, Liturgy Committee as lector as well as trainer for children’s lectors from OLPH School, Evangelization, Religious Education Board of the parish, Youth Ministry, etc. She was ready, able, and willing to help whenever her help was needed or was asked.

Remi was also whom I called a “crafty” person, meaning she was very creative in handicrafts be it crocheted leis, money leis, angels, etc. She was also a face artist – meaning face painting was another art form that she was skilled at. She claimed that she considered arts a “therapy”. I spoke with her the day before she passed on and was a bit apologetic that she had not had time to finish the beaded angels that she started, not knowing she would meet the real angels in heaven.

Smile, Remi and pray for us.



Infant Baptism

OLPH welcomed two infants to the family of God at their baptism last Saturday. They are **Mateo Jayce Leonidas Pagdilao**, son of Caleb Jay Pagdilao and Madelaine Joy Basconcillio Sarmiento, and **Chloe Alicia Reyes**, daughter of Jared Reyes and Leila May Barangan. Thank you to the parents and godparents for bringing your children to the Lord. May you continue to nourish the faith that was instilled in them by the Holy Spirit.



Our next baptism for children under the age of seven is on May 16, Saturday, at 10:00 a.m. with preparation class for parents and godparents on May 9, Saturday from 9 a.m. to noon. Parents, please pick up a baptism packet at the parish office. Application forms are due no later than May 1st.

Blue Sunday

USCCB, (United States Conference of Catholic Bishops) designated April as Child Abuse Prevention Month with blue as theme color. Children with our Religious Education classes will plant blue pinwheels in the front of the church to show support and prayers for the victims of child abuse which include human trafficking.

Prior to planting pinwheels, the children and catechists will pray the Divine Mercy chaplet in the church. Parents are most welcome to join in the prayer and pinwheels planting on **26 April 2026 at 12:30 PM.**



Preparation Class for Adults

Classes for adults who are 18 years old and up will start on July 1st from 5:30 p.m. to 7:00 p.m. This will be a weekly session for those who would like to enter into a relationship with the Lord through the sacraments of Baptism, Confirmation, and First Holy Communion. Please pick up a registration form at the Information Table and turn it in no later than the middle of May so we can order instruction materials.

Preparing a Catholic Advanced Health Care Directive

Join us for a free workshop on Catholic Advanced Healthcare Planning and Directives, where we guide you through the essential steps of aligning your healthcare decisions with your Catholic faith. This session will provide a comprehensive understanding of Catholic teaching on end-of-life care, ethical considerations, and the importance of creating advanced directives that reflect your values.

Where: St. John the Apostle & Evangelist Church, 95-370 Kuahelani Avenue, Mililani

When: 23 May 2026, Saturday, 9:00 AM-12:00 PM

Speakers: Fr. Mark Gantley, JCL, Diocese of Honolulu; Hope Young, Kokua Mau; Eva Andrade, Hawaii Catholic Conference

Sponsored jointly by the Hawaii Catholic Conference, Respect Life Office & Kokua Mau

RSVP ONLINE at www.hawaiifamilyforum.org/cahcd or email eandrade@rcchawaii.org. You may use the QR code above.



Hawai'i Catholic Community Foundation

OUR CALLING • MAKING DISCIPLES • SERVING GOD'S PEOPLE

In response to the historic flooding caused by the recent Kona low storm system, which brought unprecedented rainfall across our islands, many within our parish and school communities have been affected. This fund has been established to support recovery efforts across the Roman Catholic Church in the State of Hawaii as needs continue to unfold. Your gift will help provide assistance to our parishes and schools where it is most needed during this time of recovery.

Please go to <https://www.hawaiicatholiccommunityfoundation.org/support-flood-relief-efforts/> to make your donation!

Mahalo for your generosity, prayers, and support for our community.



BE GENEROUS



MAKE AN IMPACT



LEAVE A LEGACY



School Supply Donation Drive

Donation Drive dates: 04/12, 04/19, 04/26, 05/03, and 05/10

Donations will be accepted on all Sunday morning masses

Donations will be going towards supplying all students with essential school supplies. All school supplies will be donated to Kaimiloa and Pohakea elementary school



If you have any questions please contact:

Logan DeGuzman
808-679-9687
logandeguzman196@gmail.com

*Do Whatever
He Tells you*



Women's Conference 25 April 2026

Saint Elizabeth Church

\$30 Registration (includes breakfast and lunch)

7:00 Registration & Breakfast

Praise & Worship – 1st Talk – 2nd Talk – Mass – Adoration

2:30 Closing



Women Apostles for Catechesis

From the Office for Social Ministry

In response to disastrous flooding across Hawai'i, parishioners are partnering with Food Banks and trusted organizations to host emergency food and supplies distributions. These community-led distributions are specifically intended for residents impacted by recent flooding. For additional information or to find more food resources for flood victims in Hawaii, please check the Hawaii Food Bank website www.hawaiifoodbank.org or call or call (808) 836-3600.

On Oahu, St. Michael Parish is working with the Knights of Columbus and EPIC to help people in the Waiialua area. To volunteer help, please call (808) 637-4040 or (808) 223-3249.

On the Big Island of Hawaii, HOPE Services Hawaii is coordinating with parishes and community organizations doing disaster relief and recovery. For more information, please call (808) 935-3050.

For how Catholic Charities Hawai'i is helping assist flood victims across Hawaii, please call the following: on Oahu (808) 521-4357, on Maui (808) 873-4673, and on Kaua'i (808) 241-4673.

For donations specifically to help Hawaii's Catholic parishes and school communities which were impacted by the recent flood disaster, the Hawai'i Catholic Community Foundation has a Flood Relief and Recovery Fund. Please visit their website at www.hawaiicatholiccommunityfoundation.org. Mahalo.

MASS INTENTIONS

We pray for those who have gone before us. May their souls and all souls of the faithful departed through the mercy of God rest in peace. We also offer prayers for healing, thanksgiving or for what ever intentions one might need to offer during the sacrifice of the Mass.

Saturday, April 25 2026

5:00pm: +Clarence Cordeiro, +Roman Sajo, +Aniano Gionson, +Purita Abat Watson, +Edgar Espero, +James Sele, +Alejandro Tabios, +Marcelo Jose

Prayer for Healing: Arsenia Mauricio

Birthday: Michael Matsuda, Beatrice Estaniqui, Marcos Villegas

Anniversary: Josh and Terra Harding

Sunday, April 26, 2026

7am: +Ciano Fuentes

9am: Thanksgiving: Hector and Corazon Alegre

11am: +Trinidad Agliam, +Mahina Mei Tamayo, +Cirilo Rongcal, +Purita Abat Watson, +Remedios Cabrera, +Edgar Espero, +Constancia N.E. Aurelio

Prayer for Healing: Yolanda Villegas

Thanksgiving: Rico Aurelio, Jerry Galiza, Regina Agustin & family

5pm: +Danilo Rivera Duclayan

Anniversary: Francisco & Myrna Domingo

Monday, April 27, 2026

8:15am: +Pacita A. Gil

Tuesday, April 28, 2026

8:15am: Birthday: Elijah Nabong

Wednesday, April 29, 2026

8:15am: +Marcelo Somera

Thursday, April 30, 2026

8:15am: +Ciano Fuentes

Friday, May 1, 2026

8:15am: +Ciano Fuentes

Saturday, May 2, 2026

7:00am: +Ciano Fuentes

FOOD PANTRY

Please bring in your donations of

Breakfast Cereals

*Thank you for your kind generosity!
We also accept
other non-perishable food items.*

Your donations of gently used paper GROCERY bags and plastic bags are greatly appreciated!

MASTER PLAN UPDATE

As the Diocese continues the financial system conversions there are the gradual report updates received by the Parish. Progress continues albeit with several rain event interruptions. We are currently preparing for 5 separate Slab on Grade (SOG) Pours with control joints/saw cuts to prevent the floors from cracking. Concrete will then be ground & polished to show some of the aggregate. The Sanctuary, Baptismal Font, and possibly the center aisle will have a Mapei floor coating applied over the concrete.

Glu Lam Beam sanding & staining has commenced with roof sheathing, roofing and fireproofing to follow. Simultaneously fire sprinklers, HVAC ducting & RTU AC curbs are being installed. This will be followed by the rough-in of lighting, audio visual speakers, and cameras.

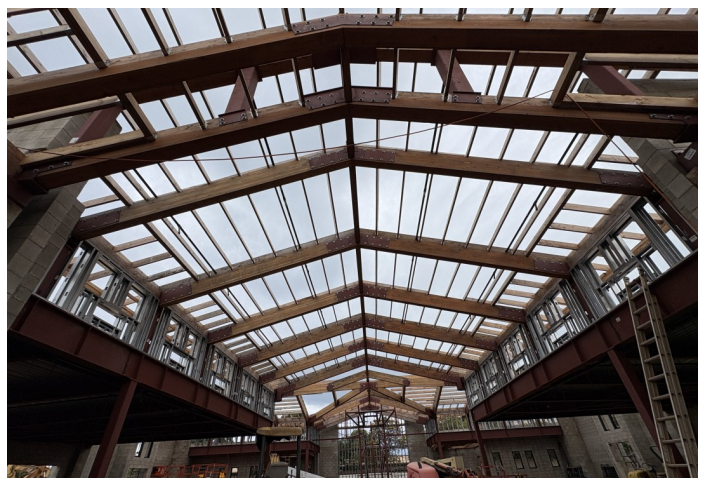
This will be followed by DensGlass/Flashings around the metal stud light gauge framing for the windows and the completions of the data com, electrical, and unisex restrooms. Pews, celebrant chairs, prie dieu, podium, and ambry is scheduled to arrive and installed in the July-August time frame. Interior work will take place over the next few months following that.

The table below summarizes the capital & liturgical campaign progress and financial status.

Capital Campaign Update As Of 1/31/26		
Capital Campaign Pledged Amount*	\$ 3,190,996.86	100%
Written Off	\$ 771,152.59	24.17%
Net Pledged Amount	\$ 2,419,844.27	75.83%
Total Collected	\$ 2,419,844.27	75.83%
Less: Campaign Fees	\$ 17,031.90	
Withdrawals**	\$ 2,413,247.74	
Cash Received After Cut-off	\$ -	
Account Balance	0	
Pledge Balance	\$ -	0.00%
*Includes Non-Pledge Gifts		

Liturgical Furnishings Campaign Update 1/31/26		
Furnishings Campaign Pledged Amount*	\$ 1,001,114.22	100%
Written Off	\$ 59,564.45	5.95%
Net Pledged Amount	\$ 941,549.77	94.05%
Total Collected	\$ 863,410.86	86.24%
Less: Campaign Fees	\$ 6,279.48	
Withdrawals**	\$ 343,514.68	
Cash Received After Cut-off	\$ -	
Account Balance	\$ 503,610.38	
Pledge Balance	\$ 78,138.91	7.81%
*Includes Non-Pledge Gifts		

Building Fund	
Beginning Balance 1/1/26	\$ 589,850.16
Deposits	\$ 15,426.00
Withdrawals**	\$ 122,221.94
Interest Reinvested	\$ 474.06
Total Building Fund	\$ 483,528.28
Building Fund & Campaign Totals	\$ 987,138.66
**	
Project Management, Topographical, Geotechnical, Infiltration, & Hazmat Surveys. Capital Campaign & Architectural Design Permitting & Construction Startup. Liturgical Furnishings	



The FILCOM Vision Center
Dr. Calvin Alonzo, Optometrist

(808) 677-7222

WAIPAHAU – The Filipino Community Center
94-428 Mokuola St., Ste 102

(808) 847-7222

HONOLULU – Kuakini Physician's Tower
405 N. Kuakini St., Ste 605

**Filipino Speaking
Doctor and Staff**

**Most Insurances
Accepted**

**Same Day &
Walk-In Appts
Available**



Armas
Financial Services

I can help with your:

- Medicare Advantage Plans
- Prescription Drug Plans
- Medicare Supplemental Plans
- Dental Plans & Vision Plans
- Life Insurance & Final Expense

**NO-Cost Consultation with
NO Obligation to Enroll**



Angie Armas
808-382-6290
8am - 5pm

94-210 Pupukahi St. Ste. 203, Waipahu

Shafer's Roofing

Cont. Lic. #BC-32095 • Fully Insured & Bonded

- Photovoltaic
- Residential Re-roofing
- Rain Gutters
- Roof Vents
- Roof Gardens
- Skylights
- Solar Shingles
- Solar Fans
- Service & Maintenance Programs
- Long Term/Extended Warranties
- Flexible Financing



**Bernadette
Shafer Robins**
President & RME
Since 2000



In Loving
Memory of
Sam Shafer

Discount for Seniors & Parish Members
Residential • Commercial • New Construction
Proudly serving Hawaii for over 30 years
www.shaferroofing.com
(808) 688-9082 • FREE ESTIMATES!

Professional Image
PRINTING • COPYING • GRAPHICS
Making Hawaii Look Good In Print

- ◆ Color Copies
- ◆ B/W Copies
- ◆ Bindery/Finishing
- ◆ Litigation Copying
- ◆ Document Scanning
- ◆ Offset Printing
- ◆ Mounting, Laminating
- ◆ Oversize B/W & Color
- ◆ Graphic Design
- ◆ CD, DVD, USB Duplication
- ◆ U.S. Postal Service Partner

KAPOLEI MARKETPLACE • 590 FARRINGTON HWY
MON THRU FRI: 8AM-7PM • SAT: 9AM-4PM
TEL: (808) 674-8388
KAPOLEI@PROIMAGEHAWAII.COM

Funeral Photo & Video Services

"Preserve memories of the love shared, the stories told, & the legacy of loved ones."

Photography ♥ Videography
Memorial Slideshow ♥ Drone

★ Earn rewards for referrals

- \$150 for every successful photo AND video referral.
- \$100 for every successful photo OR video referral.

Rewards require a minimum 4-hour booking.

www.visionaryviewsllc.com/funeral



Jerome Adarna Jr.
(808)342-7508
Jerome@visionaryviewsllc.com



**WORSHIP, LIVE, LEARN,
OR WORK IN WAIPAHAU?**

Call and make an appointment to visit our caring, friendly staff at our Waipahu Community Office and become a member!

Building Better Financial Futures

Phone: **677-6206**
94-226 Leoku St., #4,
Waipahu, HI
www.mvfcu.coop



Alissa F. Jose
Assistant Office
Manager

Email: josea@mvfcu.coop

MATANUSKA VALLEY
FEDERAL CREDIT UNION
HAWAII ALASKA

Federally insured by NCUA



**MILL TOWN
DENTAL CLINIC**

DR. MARILOU CABALO CABABAT

OUR SERVICES :

- ✔ Family & Cosmetic Dentistry
- ✔ White Fillings, Same Day Crowns
- ✔ Digital Dental Office
- ✔ Metal Free Dentures
- ✔ Implants
- ✔ Invisalign

(808) 678-8300

Located at the
Filipino Community Center in Waipahu



- Most Insurances Accepted, Including Devoted Plans
- Payment Options Available
- No Insurance, No Problem! Ask about our New Patient Special!

OFFICE HOURS

Mon, Tue, Thurs, Fri
8am-12pm and 1pm-5pm
Closed Wednesday
Weekend Appointments Available



This bulletin is made possible by your advertisers at **no cost** to the church. Please consider advertising and support the advertisers whenever possible. Call **808-674-8388** for advertising space.