

# Our Lady of Perpetual Help Parish



## Parish Mission Statement

*Our Lady of Perpetual Help Catholic Parish is a faith-filled community for all cultures and ages dedicated to Building the Kingdom of God. We come closer to God by following Jesus Christ through His Word and the Sacraments. Through the Holy Spirit and with the intercession of our Blessed Mother, we provide a sense of belonging to all God's people through prayer, service, and the sharing of our gifts for the praise and glory of God.*

## 3RD SUNDAY OF EASTER APRIL 19, 2026

*With Thanksgiving On your  
25th Anniversary of  
ORDINATION*

*Dcn. Ron Paglinawan*

Well done

*Good and Faithful Servant*



God Bless our  
**DEACONS**

## Liturgical Readings

**Monday, April 20**  
Monday of the 3rd Week of Easter  
1st Reading: Acts 6: 8-15  
Gospel: John 6: 22-29

**Tuesday, April 21**  
Tuesday of the 3rd Week of Easter  
1st Reading: Acts 7: 51-8: 1a  
Gospel: John 6: 30-35

**Wednesday, April 22**  
Wednesday of the 3rd Week of Easter  
1st Reading: Acts 8: 1b-8  
Gospel: John 6: 35-40

**Thursday, April 23**  
Thursday of the 3rd Week of Easter  
1st Reading: Acts 8: 26-40  
Gospel: John 6: 44-51

**Friday, April 24**  
Friday of the 3rd Week of Easter  
1st Reading: Acts 9: 1-20  
Gospel: John 6: 52-59

**Saturday, April 25**  
Saturday of the 3rd Week of Easter  
Feast of Saint Mark, Evangelist  
1st Reading: 1 Peter 5: 5b-14  
Gospel: Mark 16: 15-20

**Next Sunday's Readings  
April 26, 2026  
4th Sunday of Easter**

1st Reading: Acts 2: 14a, 36-41  
2nd Reading: 1 Peter 2: 20b-25  
Gospel: John 10: 1-10

- ♦ Fr. Edmundo Naceno Barut, Pastor ♦ Fr. Preston "PJ" Castro, Parochial Vicar
- ♦ Eric Kim, Rey Dinulong, and Ronald Paglinawan (Ret.) Deacons

# THAT THEY MAY BE ONE!

## Our Lady of Perpetual Help Parish

**NEW** Office Hours: Monday-Friday, 9am-3pm  
 Phone: (808) 689-8681 Weekends & Holidays: Closed  
 Fr. Edmundo Barut, Pastor, ext. 102  
 Fr. Preston "PJ" Castro, Parochial Vicar, ext. 103  
 Eric Kim, Deacon & Rey Dinulong, Deacon & Ron Paglinawan, Deacon (Ret.), 100  
 Mela Kim, Office Coordinator, ext. 101  
 Emily Tui, Receptionist/Secretary, ext. 100  
 Julia Torres, Director of Religious Education, ext. 107  
 Edwin Albano, Bookkeeper, ext. 104  
 Hollie Arquette, Janitor & Lordy Luis, School Groundskeeper ext. 100

## OLPH Ministries & Groups

### LITURGICAL ACTIVITIES/MINISTRIES

Adoration w/Benediction, Every First Friday, 7am & Wednesday, 5pm (Ch)  
 Infant Baptism, 1st Saturday of Month 1pm & 3rd Saturday of the Month 10am (Ch)  
 Combined Choir Practice, (to be announced)  
 Liturgy Committee Mtg, (to be announced)  
 Marian Devotions & Novena to the Holy Trinity, 1<sup>st</sup> Saturday, 8:30am (Ch)  
 Rosary to Our Lady of Perpetual Help, M-F 7:50am (Ch)  
 Sacred Heart Society, 1st Sunday, 9:00am Mass (Ch)  
 Samoan Choir practice, (to be announced)

### PARISH ADMINISTRATION

Staff Mtg, [as needed] (Parish Office)

### PARISH MAINTENANCE

Church Cleaning, Every Saturday morning after the 7:00am Mass (Ch)  
 Parking Security (to be announced)  
 Repair & Maintenance Committee (as needed)

### YOUNG MINISTRY

Life Teen (Grades 9-12) & Edge Ministry Sunday at 3pm (Church)

### RELIGIOUS EDUCATION CLASSES

OCIA-Adults Every Saturday, 3pm (School Lanai)  
 Religious Ed. Classes, PreK-8<sup>th</sup>, Every Sunday, 1:00pm (Church)

### RELIGIOUS ORGANIZATIONS

Filipino Catholic Club, 1st Sunday - 8:15am (School Lanai)  
 Knights of Columbus, 1<sup>st</sup> Saturday - 9am (Conf. Rm 2)  
 Samoan Ministry (to be announced)

### SOCIAL MINISTRIES

Bereavement Ministry  
 Food Distribution, Last Saturday, 9:00am-11:00am (School ground)  
 Health Ministry, Blood Pressure Screening every 3rd Sunday @ All Masses (Ch)  
 Non-Perishable Food Collection, Every Saturday & Sunday, All Masses (Ch)  
 Respect Life Ministry (to be announced)  
 Seniors Exercise (low impact), Every Thursday, 9:00am (Conf. Rm 2)

Interested in joining a ministry? Please call the Church Office for more information and Point of Contact Person.

## *Mahalo For Sharing Your Treasures*

### Holy Thursday & Good Friday Collections

Holy Thursday Regular Offering	\$ 2,233.00
Holy Thursday Regular Offering (Credit Card)	\$ 20.00
Good Friday Regular Offering	\$ 3,491.00
Mahele Na Makana Collection	<u>\$ 1,725.00</u>
<b>Sub Total:</b>	<b>\$ 7,469.00</b>
Building Fund (Credit Card)	<u>\$ 25.00</u>
<b>Sub Total:</b>	<b>\$ 25.00</b>
<b>Grand Total:</b>	<b>\$ 7,494.00</b>

### ParishSOFT Collections April 4 & 8, 2026

Regular Offering	\$ 4,322.62
Mahele Na Makana Collection	<u>\$ 113.00</u>
<b>Sub Total:</b>	<b>\$ 4,435.62</b>
Building Fund	\$ 1,420.00
Easter	\$ 535.00
Holy Thursday	\$ 220.00
Good Friday/Holy Land	\$ 350.00
Rice Bowl	\$ 175.00
<b>Sub Total:</b>	<b><u>\$ 2,700.00</u></b>
<b>Total 2:</b>	<b>\$ 7,135.62</b>

## Parish Schedule This Week

### **SUNDAY, April 19, 2026**

#### **3rd Sunday of Easter**

**7am, 9am, 11am & 5pm Masses - (Ch)**

**1:00pm: CCD Classes**

**3:00pm: EDGE and LifeTeen**

### **MONDAY, April 20, 2026**

**7:50am: Rosary (Ch)**

**8:15am: Sacrifice of the Holy Mass (Ch)**

### **TUESDAY, April 21, 2026**

**7:50am: Rosary (Ch)**

**8:15am: Sacrifice of the Holy Mass (Ch)**

### **WEDNESDAY, April 22, 2026**

**7:50am: Rosary (Ch)**

**8:15am: Sacrifice of the Holy Mass (Ch)**

**5:00pm: Holy Hour (Ch)**

### **THURSDAY, April 23, 2026**

**7:50am: Rosary (Ch)**

**8:15am: Sacrifice of the Holy Mass (Ch)**

### **FRIDAY, April 24, 2026**

**7:50am: Rosary (Ch)**

**8:15am: Sacrifice of the Holy Mass (Ch)**

### **SATURDAY, April 25, 2026**

**6:30am: Rosary (Ch)**

**7:00am: Sacrifice of the Holy Mass (Ch)**

**5:00pm: Sacrifice of the Holy Mass - Sunday Vigil (Ch)**

### **SUNDAY, April 26, 2026**

#### **4th Sunday of Easter**

**7am, 9am, 11am & 5pm Masses (Ch)**

**1:00pm: CCD Classes (Ch)**

**3:00pm: EDGE and LifeTeen (Ch)**

## *Mahalo For Sharing Your Treasures*

### Easter Sunday April 4 & 5, 2026 Collections

Regular Offering	\$14,580.00
Regular Offering (Credit Card)	\$ 240.40
Mahele Na Makana Collection	<u>\$ 2,716.00</u>
<b>Sub Total:</b>	<b>\$17,536.40</b>
All Souls Day	\$ 5.00
Annunciation	\$ 20.00
Ash Wednesday	\$ 5.00
Assumption	\$ 22.00
Baptisms	\$ 260.00
Building Fund (Envelopes)	\$ 2,779.00
Building Fund (Credit Card)	\$ 95.00
Blessings	\$ 100.00
Church in Latin America/Black&Indian	\$ 20.00
Donation_Easter Flowers	\$ 55.00
Donation - Easter Vigil Candles	\$ 500.00
Donations - Adoration of the Cross	\$ 452.00
Feast Day	\$ 5.00
Funeral	\$ 300.00
Initial Offering	\$ 10.00
Mass Intentions	\$ 340.00
Mother's/Father's Day Collection	\$ 65.00
Rice Bowl	\$ 627.66
Seminarian Fund	<u>\$ 10.00</u>
<b>Sub Total:</b>	<b>\$ 5,650.66</b>
<b>Total 1:</b>	<b>\$ 23,187.06</b>
<b>Total 2:</b>	<b><u>\$ 7,135.62</u></b>
<b>Grand Total:</b>	<b>\$30,322.68</b>

*Thank you very much for your Stewardship*

## Homily Helps

Luke 24: 13-35 The Road to Emmaus

- The transformation of the two disciples as they walk to Emmaus with the Lord is dramatic, even though they are not conscious who this is. When the Lord encounters them, they are disheartened and preoccupied. No doubt they are grieving the loss of their mentor. They seem sad and depressed, looking downcast. They may have been angry and frustrated as well, for they were debating about all that happened as they conversed. They are so self-absorbed that they don't seem to notice a stranger until he asks what's going on. But by the end of their conversation, they enjoy the company of this teacher so much that they insist to stay with them. Their spirits have been lifted. No longer are they returning home disconsolate and alone; this stranger—whom they still don't recognize—has turned their attention back outward again. The risen Lord has awakened their hospitable, caring, and unselfish natures.
- Note that Cleopas and his companion are not part of the Eleven. They were not present at the Last Supper, which would have been but a few days earlier. They were not present when Jesus “took bread, said the blessing, broke it” (Luke 22:19, 24:30) and told the apostles that this was his body. Yet, this is the moment when “their eyes were opened and they recognized him” (24:31). The breaking of bread triggered their recognition even though they had not personally experienced the event it suggested.
- Transformed and hearts now aflame, the two disciples immediately return to Jerusalem to share the incredible news. Remember, it was late and they had planned to retire for the night. But they cannot hold their encounter with the risen Lord inside for even a moment. Overflowing with Easter joy, they return the way they had come, but joyous, not downcast. Hearts burning, not mourning. Eager to find others, not to isolate alone. They are impassioned to spread the truly Good News.

### Question of the Week

What am I impassioned about? Can I see the Easter miracle, the continuing presence of the risen Lord, and the promise of the Resurrection bringing me as much joy?

### Catholic Ministries Annual Appeal UPDATE

We are so close to our goal of \$43, 419! As of March 31st, together we have raised \$41, 932! We're 97% there! If you're still considering making a donation, it's not too late. To participate and make your gift:

- Complete a pledge form. (Available at the church entrance or parish office)  
It can be a one-time or a reoccurring gift
- Or you can scan the QR Code here
- Or visit the web: [Appeal.CatholicHawaii.org](http://Appeal.CatholicHawaii.org).



Be sure that your gift is designated to **Our Lady of Perpetual Help Parish** in Ewa Beach.

***Your donation supports the vital ministries of our Church across our Islands.  
Thank you for your prayerful support and generosity!***

#### Please Call the Office First

#### OLPH Parish Info

##### Getting Married?

Wedding preparations begin at least 6 months PRIOR to the actual wedding.

##### Funeral Arrangements?

Call WHEN you meet with the mortuary to make funeral arrangements.

##### Homebound Ministry

Inform the parish office with the name, address and phone number of the person who would like to receive Communion at home.

##### Planning a Baptism

Call BEFORE making any baptism celebration plans

##### Sunday Masses

7am, 9am, 11am & 5pm

##### Vigil Mass

Saturday, 5pm

##### Weekday Daily Masses

Mon-Fri, 8:15am  
Saturday, 7am

##### Holy Rosary

Monday through Sunday preceding the daily and Sunday Masses

##### Sacrament of Reconciliation

Sat, 4p-4:30pm or by appointment

##### Adoration with Benediction

Every First Friday at 7am  
Every Wednesday at 5pm

# RELIGIOUS EDUCATION!!

## Congratulations

congratulations to our three neophytes who were fully initiated at the Easter Vigil.  
Shane Quiambao (left), Ron Nomura (right), and Ezra Dy in the middle.

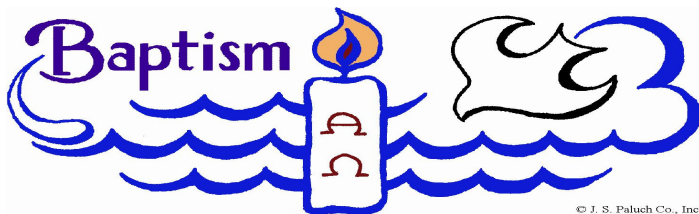
Also to **Francis Anyelina BalbuenaOvalles**  
Who received the Sacrament of Confirmation on April 12, 2026  
May God bless and keep you close to Him always

## Preparation Class for Adults

Classes for adults who are 18 years old and up will start on July 1<sup>st</sup> from 5:30 p.m. to 7:00 p.m. This will be a weekly session for those who would like to enter into a relationship with the Lord through the sacraments of Baptism, Confirmation, and First Holy Communion. Please pick up a registration form at the Information Table and turn it in no later than the middle of May so we can order instruction materials.

## Infant Baptism Schedule

Month	Preparation class for parents and godparents	Baptism Date	Application Due Date
May	May 9, 9 am to noon	May 16, 10:00 am	May 1 <sup>st</sup>
June	June 13, 9 am to noon	June 20, 10:00 am	June 1 <sup>st</sup>



Join us on April 26th at 1pm in the Church to pray the Divine Mercy and Plant Blue Pinwheels to show your Support!

## SACRAMENTS INITIATIVE

Ask our catechists before or after each Mass if you, your family, or anyone you know would like information on sacraments or register for any class as follows:

- \* Baptism at any age, from infant to adults. Infant baptism is for children under seven years of age.
- \* Full initiation sacraments of Baptism, Confirmation, and First Holy Communion for ages seven to adults
- \* Confirmation only for those who have received Baptism and First Communion for adults
- \* Confirmation and First Holy Communion for adults with Catholic baptism.
- \* Reception into full communion of the Catholic Church, ages seven and up and with valid Baptism from a non-Catholic denomination
- \* Religious education classes from Pre-K to high school
- \* Matrimony – Catholic wedding either for the first time or marriage validation which means they were married civilly.

We thank those who have come to our Information Table to ask about Baptism, First Communion, Confirmation, and yes, Matrimony. Several families have taken registration forms for the next Religious Education classes which will start on August 9. May God bless us all and may we all continue to respond to the promptings of the Holy Spirit inviting us to start or deepen our relationship with the Lord.



# Hawai'i Catholic Community Foundation

OUR CALLING • MAKING DISCIPLES • SERVING GOD'S PEOPLE

In response to the historic flooding caused by the recent Kona low storm system, which brought unprecedented rainfall across our islands, many within our parish and school communities have been affected. This fund has been established to support recovery efforts across the Roman Catholic Church in the State of Hawaii as needs continue to unfold. Your gift will help provide assistance to our parishes and schools where it is most needed during this time of recovery.

Please go to <https://www.hawaiicatholiccommunityfoundation.org/support-flood-relief-efforts/> to make your donation!

Mahalo for your generosity, prayers, and support for our community.



BE GENEROUS



MAKE AN IMPACT



LEAVE A LEGACY

## School Supply Donation Drive

Donation Drive dates: 04/12, 04/19, 04/26, 05/03, and 05/10

Donations will be accepted on all Sunday morning masses

Donations will be going towards supplying all students with essential school supplies. All school supplies will be donated to Kaimiloa and Pohakea elementary school



If you have any questions please contact:  
Logan DeGuzman  
808-679-9687  
[logandeguzman196@gmail.com](mailto:logandeguzman196@gmail.com)

*Do Whatever  
He Tells you*



# Women's Conference 25 April 2026

Saint Elizabeth Church

\$30 Registration (includes breakfast and lunch)

7:00 Registration & Breakfast  
Praise & Worship – 1st Talk – 2nd Talk – Mass – Adoration  
2:30 Closing



Women Apostles for Catechesis

## From the Office for Social Ministry

In response to disastrous flooding across Hawai'i, parishioners are partnering with Food Banks and trusted organizations to host emergency food and supplies distributions. These community-led distributions are specifically intended for residents impacted by recent flooding. For additional information or to find more food resources for flood victims in Hawaii, please check the Hawaii Food Bank website [www.hawaiifoodbank.org](http://www.hawaiifoodbank.org) or call or call (808) 836-3600.

On Oahu, St. Michael Parish is working with the Knights of Columbus and EPIC to help people in the Waialua area. To volunteer help, please call (808) 637-4040 or (808) 223-3249.

On the Big Island of Hawaii, HOPE Services Hawaii is coordinating with parishes and community organizations doing disaster relief and recovery. For more information, please call (808) 935-3050.

For how Catholic Charities Hawai'i is helping assist flood victims across Hawaii, please call the following: on Oahu (808) 521-4357, on Maui (808) 873-4673, and on Kaua'i (808) 241-4673.

For donations specifically to help Hawai'i's Catholic parishes and school communities which were impacted by the recent flood disaster, the Hawai'i Catholic Community Foundation has a Flood Relief and Recovery Fund. Please visit their website at [www.hawaiicatholiccommunityfoundation.org](http://www.hawaiicatholiccommunityfoundation.org).

*Mahalo.*

## MASS INTENTIONS

We pray for those who have gone before us. May their souls and all souls of the faithful departed through the mercy of God rest in peace. We also offer prayers for healing, thanksgiving or for what ever intentions one might need to offer during the sacrifice of the Mass.

Saturday, April 18, 2026

**5:00pm:** +Anastacio "Tash" de Castro  
**Prayer for Healing:** Shawn Ries

Sunday, April 19, 2026

**7am:** +Ciano Fuentes

**9am:** **MISSA PRO POPOLO**

**11am:** +Jason Baguio, +Trinidad Agliam, +Mahina Mei Tamayo, +Luis Rabinol, Jr., +Joel Rachachot, +Roland Batangan +Joseph Agustin +Kristoffe Augustin, +Orlando Domingo +Estefanio A. Acosta, +Purita Abat Watson, +Severa Ramos, +Consolacion M. Velasco, +Aniceto Ramos, +Remedios Cabrera

**Prayer for Healing:** Arsenia Mauricio, Regina Agustin

**In Thanksgiving - 50th Wedding Anniversary:** Helier & Victoria Cortez

**5pm:** +Danilo Rivera Duclayan

Monday, April 20, 2026

**8:15am:** +Erunda Halili

Tuesday, April 21, 2026

**8:15am:** **In Thanksgiving - Birthday:** Alvin Azana

Wednesday, April 22, 2026

**8:15am:** +Pedro Somera

Thursday, April 23, 2026

**8:15am:** +Rita Trinidad Padua

Friday, April 24, 2026

**8:15am:** **In Thanksgiving - Birthday:** Fidel Torres

Saturday, April 25, 2026

**7:00am:** +For all the souls in Purgatory

## FOOD PANTRY

Please bring in your donations of



**Ramen Noodles or Cup Noodle**

**Thank you** for your kind generosity!

We also accept  
other non-perishable food items.

**Your donations of gently used  
paper GROCERY bags and plastic bags are  
greatly appreciated!**

# MASTER PLAN UPDATE

As the Diocese continues the financial system conversions there are the gradual report updates received by the Parish. Progress continues albeit with several rain event interruptions. We are currently preparing for 5 separate Slab on Grade (SOG) Pours with control joints/saw cuts to prevent the floors from cracking. Concrete will then be ground & polished to show some of the aggregate. The Sanctuary, Baptismal Font, and possibly the center aisle will have a Mapei floor coating applied over the concrete.

Glu Lam Beam sanding & staining has commenced with roof sheathing, roofing and fireproofing to follow. Simultaneously fire sprinklers, HVAC ducting & RTU AC curbs are being installed. This will be followed by the rough-in of lighting, audio visual speakers, and cameras.

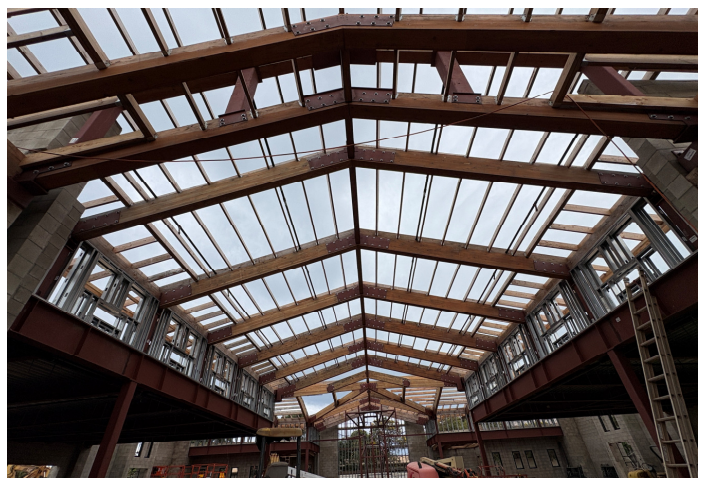
This will be followed by DensGlass/Flashings around the metal stud light gauge framing for the windows and the completions of the data com, electrical, and unisex restrooms. Pews, celebrant chairs, prie dieu, podium, and ambray is scheduled to arrive and installed in the July-August time frame. Interior work will take place over the next few months following that.

The table below summarizes the capital & liturgical campaign progress and financial status.

Capital Campaign Update As Of 1/31/26		
Capital Campaign Pledged Amount*	\$ 3,190,996.86	100%
Written Off	\$ 771,152.59	24.17%
Net Pledged Amount	\$ 2,419,844.27	75.83%
Total Collected	\$ 2,419,844.27	75.83%
Less: Campaign Fees	\$ 17,031.90	
Withdrawals**	\$ 2,413,247.74	
Cash Received After Cut-off	\$ -	
Account Balance	0	
Pledge Balance	\$ -	0.00%
*Includes Non-Pledge Gifts		

Liturgical Furnishings Campaign Update 1/31/26		
Furnishings Campaign Pledged Amount*	\$ 1,001,114.22	100%
Written Off	\$ 59,564.45	5.95%
Net Pledged Amount	\$ 941,549.77	94.05%
Total Collected	\$ 863,410.86	86.24%
Less: Campaign Fees	\$ 6,279.48	
Withdrawals**	\$ 343,514.68	
Cash Received After Cut-off	\$ -	
Account Balance	\$ 503,610.38	
Pledge Balance	\$ 78,138.91	7.81%
*Includes Non-Pledge Gifts		

Building Fund	
Beginning Balance 1/1/26	\$ 589,850.16
Deposits	\$ 15,426.00
Withdrawals**	\$ 122,221.94
Interest Reinvested	\$ 474.06
Total Building Fund	\$ 483,528.28
<b>Building Fund &amp; Campaign Totals</b>	<b>\$ 987,138.66</b>
**	
Project Management, Topographical, Geotechnical, Infiltration, & Hazmat Surveys. Capital Campaign & Architectural Design Permitting & Construction Startup. Liturgical Furnishings	



**The FILCOM Vision Center**  
Dr. Calvin Alonzo, Optometrist

**(808) 677-7222**

WAIPAHU – The Filipino Community Center  
94-428 Mokuola St., Ste 102

**(808) 847-7222**

HONOLULU – Kuakini Physician's Tower  
405 N. Kuakini St., Ste 605

**Filipino Speaking  
Doctor and Staff**

**Most Insurances  
Accepted**

**Same Day &  
Walk-In Appts  
Available**



*Armas*   
Financial Services

**I can help with your:**

- Medicare Advantage Plans
- Prescription Drug Plans
- Medicare Supplemental Plans
- Dental Plans & Vision Plans
- Life Insurance & Final Expense

**NO-Cost Consultation with  
NO Obligation to Enroll**



**Angie Armas**  
808-382-6290  
8am - 5pm

94-210 Pupukahi St. Ste. 203, Waipahu

*Shafer's Roofing*

Cont. Lic. #BC-32095 • Fully Insured & Bonded

- Photovoltaic
- Residential Re-roofing
- Rain Gutters
- Roof Vents
- Roof Gardens
- Skylights
- Solar Shingles
- Solar Fans
- Service & Maintenance Programs
- Long Term/Extended Warranties
- Flexible Financing



**Bernadette  
Shafer Robins**  
President & RME  
Since 2000



In Loving  
Memory of  
Sam Shafer

\*Discount for Seniors & Parish Members\*  
**Residential • Commercial • New Construction**  
Proudly serving Hawaii for over 30 years  
[www.shaferroofing.com](http://www.shaferroofing.com)  
**(808) 688-9082 • FREE ESTIMATES!**

**Professional Image**  
PRINTING • COPYING • GRAPHICS  
Making Hawaii Look Good In Print

- ◆ Color Copies
- ◆ B/W Copies
- ◆ Bindery/Finishing
- ◆ Litigation Copying
- ◆ Document Scanning
- ◆ Offset Printing
- ◆ Mounting, Laminating
- ◆ Oversize B/W & Color
- ◆ Graphic Design
- ◆ CD, DVD, USB Duplication
- ◆ U.S. Postal Service Partner

**KAPOLEI MARKETPLACE • 590 FARRINGTON HWY**  
MON THRU FRI: 8AM-7PM • SAT: 9AM-4PM  
TEL: (808) 674-8388  
[KAPOLEI@PROIMAGEHAWAII.COM](mailto:KAPOLEI@PROIMAGEHAWAII.COM)

**Funeral Photo & Video Services**

"Preserve memories of the love shared, the stories told, & the legacy of loved ones."

Photography ♥ Videography  
Memorial Slideshow ♥ Drone

★ Earn rewards for referrals

- \$150 for every successful photo AND video referral.
- \$100 for every successful photo OR video referral.

\*Rewards require a minimum 4-hour booking.\*

[www.visionaryviewsllc.com/funeral](http://www.visionaryviewsllc.com/funeral)



**Jerome Adarna Jr.**  
(808)342-7508  
[Jerome@visionaryviewsllc.com](mailto:Jerome@visionaryviewsllc.com)



**WORSHIP, LIVE, LEARN,  
OR WORK IN WAIPAHU?**

Call and make an appointment to visit our caring, friendly staff at our Waipahu Community Office and become a member!

*Building Better Financial Futures*

Phone: 677-6206  
94-226 Leoku St., #4,  
Waipahu, HI  
[www.mvfcu.coop](http://www.mvfcu.coop)



**Alissa F. Jose**  
Assistant Office  
Manager

Email: [josea@mvfcu.coop](mailto:josea@mvfcu.coop)

**MATANUSKA VALLEY  
FEDERAL CREDIT UNION**  
HAWAII ALASKA

Federally insured by NCUA



**MILL TOWN  
DENTAL CLINIC**

DR. MARILOU CABALO CABABAT

**OUR SERVICES :**

- ✔ Family & Cosmetic Dentistry
- ✔ White Fillings, Same Day Crowns
- ✔ Digital Dental Office
- ✔ Metal Free Dentures
- ✔ Implants
- ✔ Invisalign

**(808) 678-8300**

Located at the  
**Filipino Community Center in Waipahu**



- Most Insurances Accepted, Including Devoted Plans
- Payment Options Available
- No Insurance, No Problem! Ask about our New Patient Special!



**OFFICE HOURS**

Mon, Tue, Thurs, Fri  
8am-12pm and 1pm-5pm  
Closed Wednesday  
**Weekend Appointments  
Available**

This bulletin is made possible by your advertisers at **no cost** to the church. Please consider advertising and support the advertisers whenever possible. Call **808-674-8388** for advertising space.