



# Te Kura Kaupapa Māori o Taumārere

## Pānui ā kura

wiki 11, wahanga 2, 2026

## Wānanga Matariki

### *Te Paeroa*

Overnight Stay at kura for all tamariki and whānau

### Taite 2 o Hūrae @ Kura

- 12:00pm: Tamariki arrive at kura
- 1:00pm – 5:00pm: Wānanga Tākaro (Traditional Games).
- 5:00pm: Kai o te po
- 6:00pm: Wash and change into kākahu mōe, and set up beds.
- 7:00pm: Wānanga Waiata.
- 8:00pm: Making wishes on Hiwa-l-te-rangi, singing, and greeting the stars.
- 9:00pm: wā mōe

### Paraire 3 o Hūrae

- 5:00am: Wā ara, whakarite mo te hautapu
- 5:15am – 6:00am: Te Hautapu -Karakia, walata, and offering kal to the Matariki star cluster.
- 7:00am: Matariki Breakfast
- 8:30am: Clean up and prepare to head home.
- 9:45-10am: Buses arrive for departure.

 09 404 0630

 2-6 Station Road, Moerewa

 Te Kura Kaupapa Māori o Taumārere

 tari@taumarere.school.nz

# Ngā take Pōari - Ngā Kaupapa Here **Kura policy at a glance**

## **Kutu**

### **Kura responsibilities**

Te Kura Kaupapa Māori o Taumārere aims to prevent and minimise the spread of head lice by:

- informing our kura community about head lice, including providing educational resources (e.g. not sharing personal items, promoting regular hair checks)
- referring families for further advice and treatment (e.g. public health nurse)
- sharing notification and treatment information with the families of ākonga who may be affected.

We manage notification of head lice with sensitivity and keep personal information private and confidential.

### Responsibilities of others

We expect everyone at kura or kura-related activities to take care of their health and notify school staff if they need support.

The Ministry of Health recommends that taura with live lice should inform the kura and stay away from kura until treatment has started.

Parents/Caregivers are primarily responsible for identifying and treating head lice by:

- checking taura hair regularly for signs of head lice or nits
- treating the head lice or nits (e.g. combing and using a head lice shampoo/lotion)
- informing the kura if their child has head lice so that notification and treatment information can be shared as appropriate.

For more information about this and our other policies, please visit  
And enter the following details:



SchoolDocs website

<https://taumarere.schooldocs.co.nz/>

**Username: taumarere**

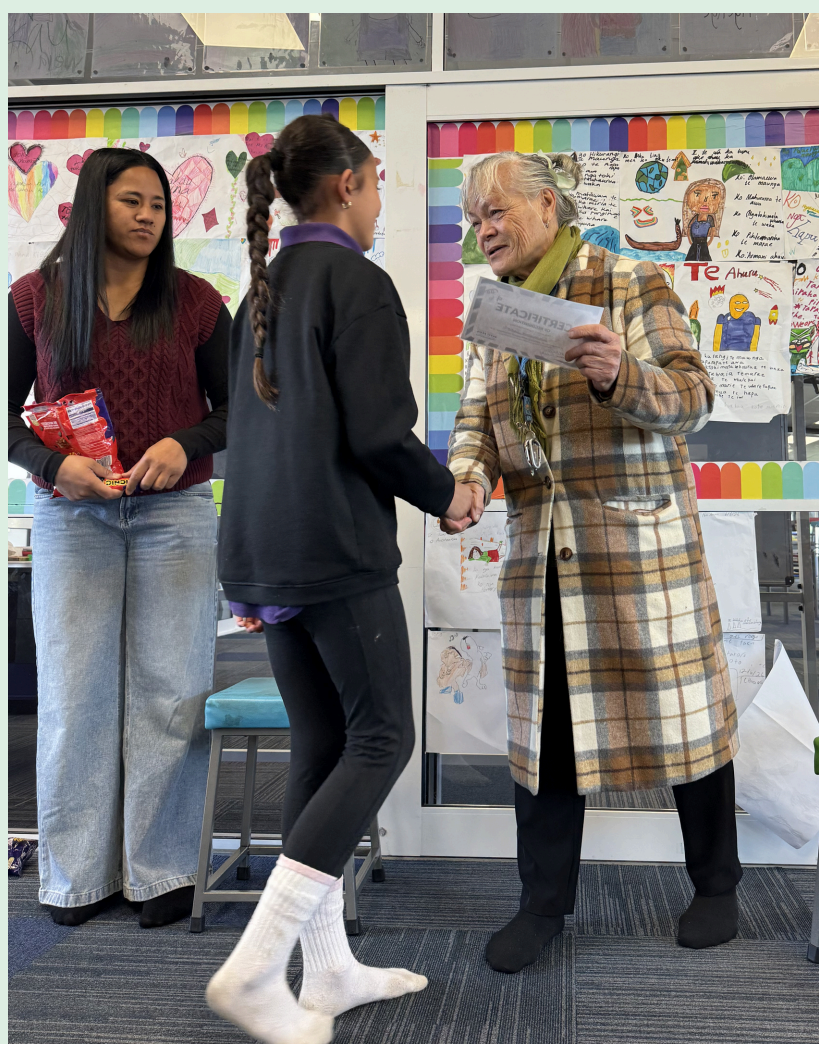
**Password: 0211**

# Ngā Kōrero o te wā

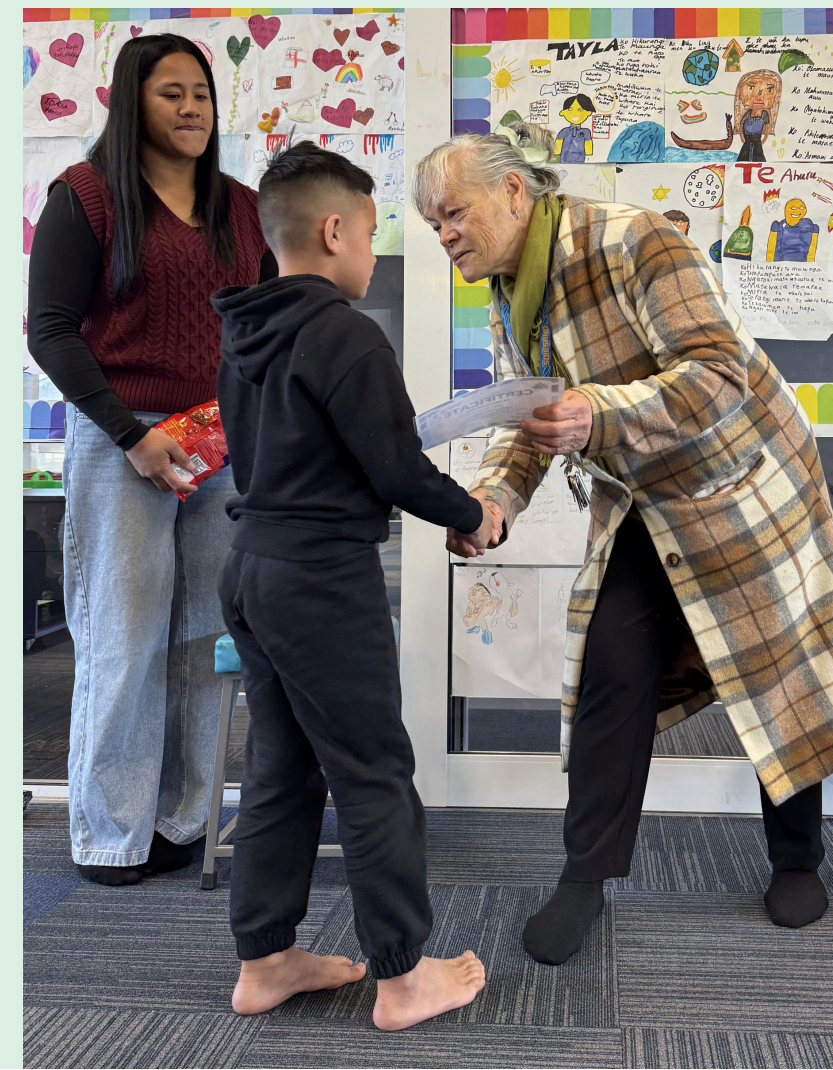
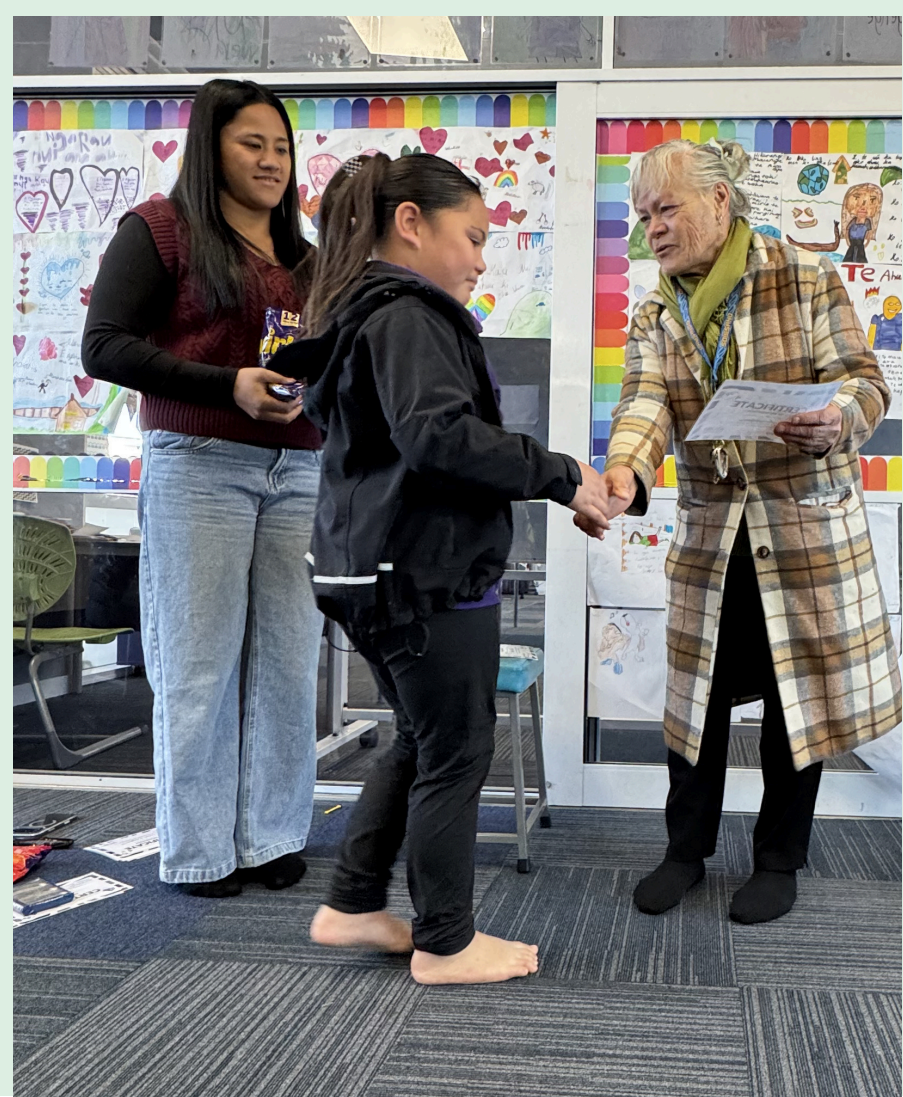
## 100% ATTENDANCE



**E MIHI ANA** ki a Toko-te-Rangi Nathan, Tahlia Cherrington rātou ko Tayla-Shay Cherrington mō to kaha ki te tae ki te kura ia rā mo ngā wahanga e rua o te tau!  
**Miharo koutou!!**



**He mihi nui** ki a Elizabeth mai i Te Rūnanga o Ngāti Rēhia mō tana haere mai ki te whakanui i ngā tamariki i taea te kura ia rā. E mihi ana ki a koutou katoa, tamariki mā. Tūmeke koutou!





Anei etahi o nga mahi  
mai i a Waipuna me  
Pukerau



‘E mihi ana ki nga tamariki hou kua tau ke  
ki te kura nei. He maha nga pukenga rereke  
o te akomanga nei. Mai i te tamariki pai ki  
te taupatupatu ki nga kaihangā whare.  
He pukenga rau.



‘E ngana ana a Te Rere i Tiria ki te whakapakari ake i o rātou  
pukenga tu ki te taumata.  
Te maia hoki o te hunga nei.

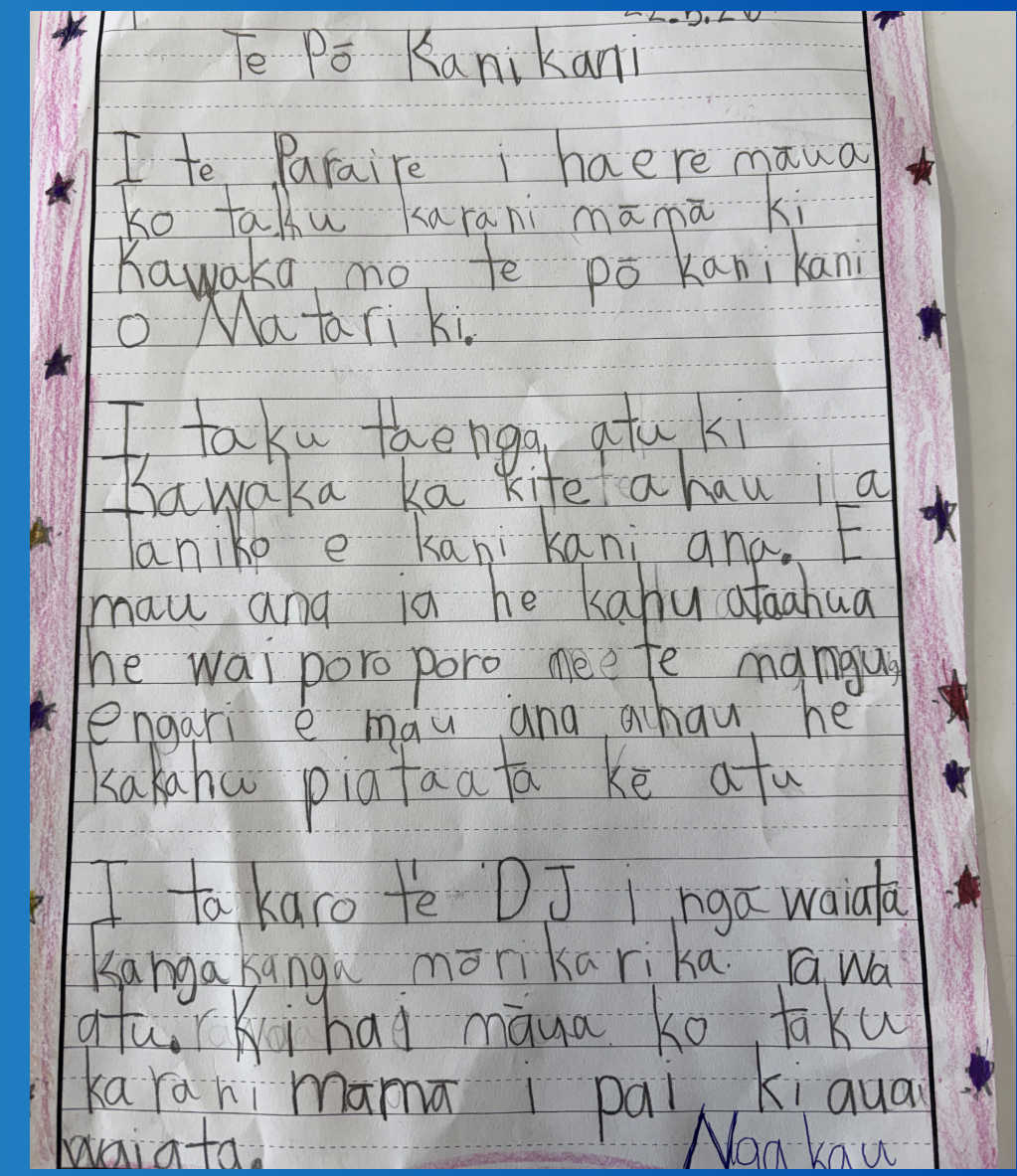
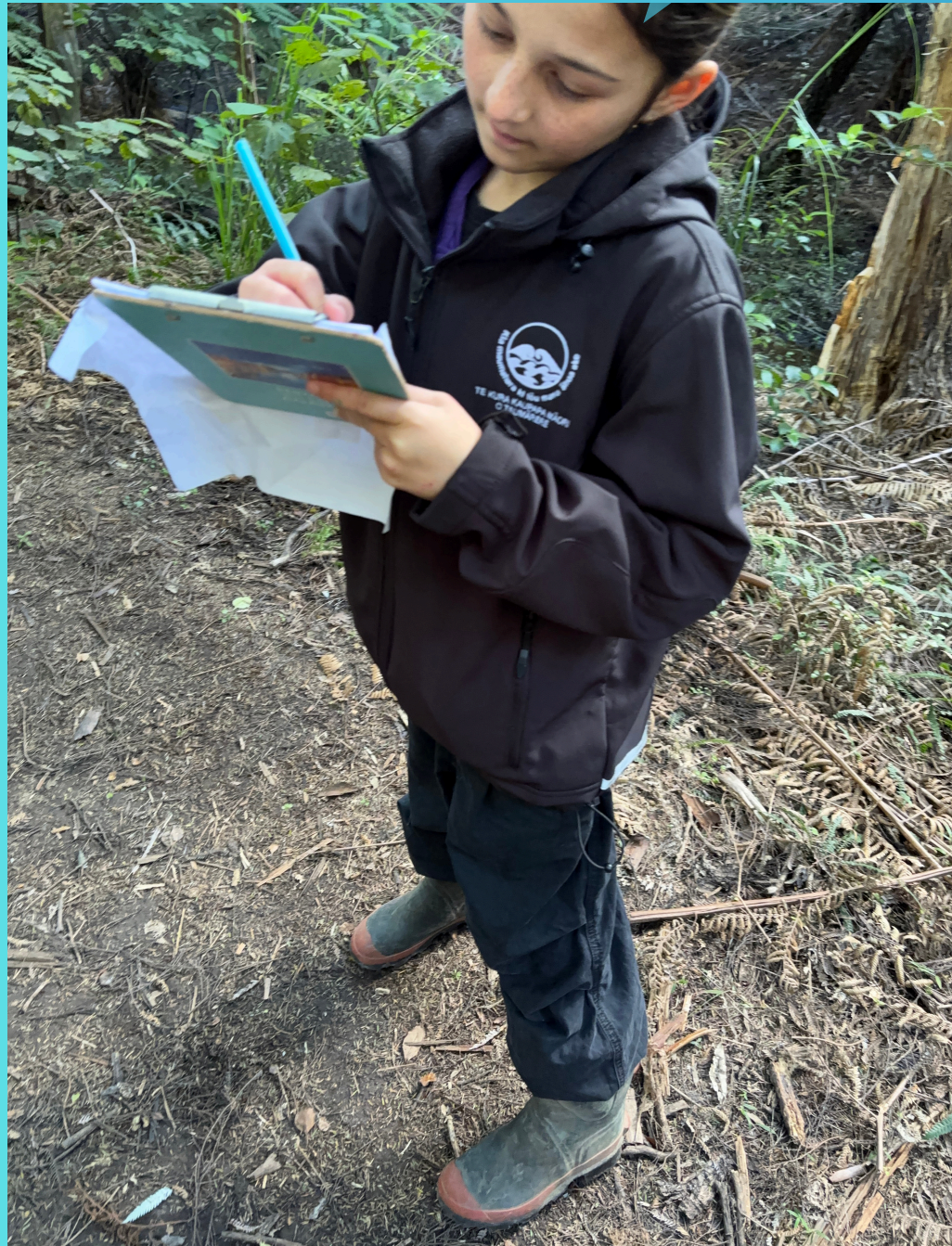




E hanga ana ngā taratahi mo te pō kanikani a Matariki



Tuhinga taki o te po kanikani



## Project Island Song haerenga





I tona tō mātou rōpū Tau 6 e te FNDC ki te whakatō i ngā rākau manarini e 29 huri noa i te Pāka o Simson — he kai mā te hapori. Te mutunga mai o te pai o te uru ki tēnei kaupapa pai





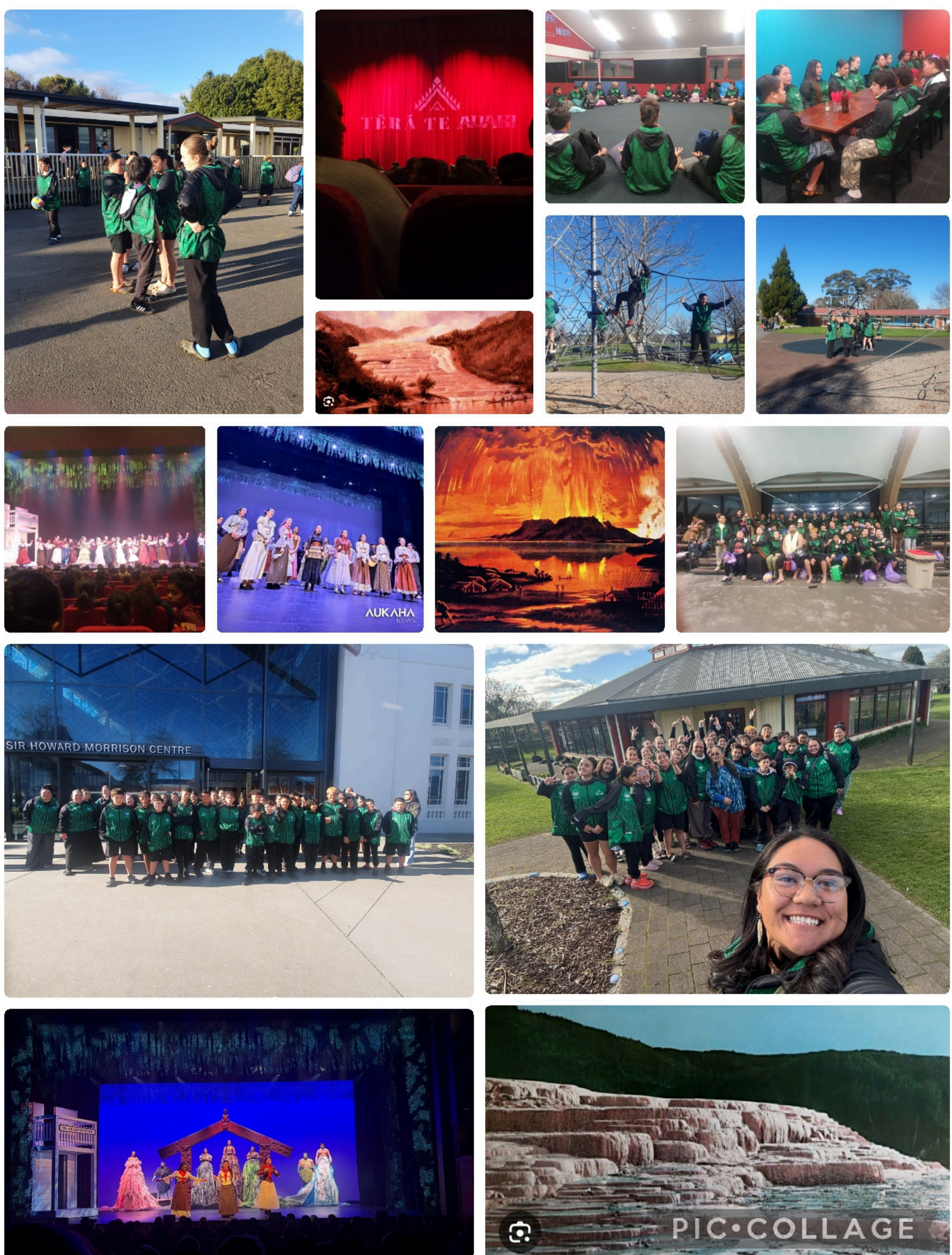
# Po kanikani- Kura Teina



# Taumārere ki Ruamata

T  
ē  
r  
ā  
T  
e  
A  
u  
a  
h  
i

R  
o  
t  
o  
r  
u  
a



I te wiki waru o tēnei wāhanga, i whai wāhi mai mātou o te whanau Hinoi ki te haere ki Rotorua. Mo to mātou waimārie, i noho mātou ki Te Kura Kaupapa Māori o Ruamata.

I haere mātou ki reira ki te matakitaki i tētahi whakaaturanga. Ko te ingoa o taua whakaari, ko Tērā Te Auahi. He whakaari tēnei e whakatauirā ana i te pahūtanga o te Maunga o Tarawera.

Nā tērā, i whakahoki mai whakakāaro ngā ākonga me tā rātou hiahia ki te hanga whakaari pērā e pā ana ki ngā kaupapa o tā mātou Rohe.

**Kāhui**

**Tuna**

**NGĀ MANU KŌRERO**

**PŪMANAWA - HĪ IKA**



**PĀNUI KI NGĀ  
TAU 1 & 2**



**TE WĀNANGA O  
AOTEAROA**



**TE MAHI UKU WITH  
DOROTHY WAETFORD**

**HUI WIKI HĀ**

**Date: Tuesday 30<sup>th</sup>**

**June**

**Time: 5pm**

**Venue: Ihi o te Rā  
(staffroom)**





# KAUPAPA

## *Wahanga 2*



### **HUNE** NGĀ KAUPAPA MATARIKI

**30** Haerenga ki te rapu whetu  
Ngā Hua- Tau 1-3

### **HŪRAE**

**2-3** Wānanga/ Hautapu - Te kura  
katoa

**3** Ra mutunga o te wahanga  
ka mutu te kura hei te 10am

## *Wahanga 3*

### **HŪRAE**

**20** Ra tuatahi o te wahanga 3

**30** Wananga Aho Matua