

# Te Kura Kaupapa Māori o Taumārere



## HE WHAKAMĀRAMATANGA MO NGĀ WHĀNAU

1 – 6 Station Rd, Moerewa,  
Bay of Islands 0211  
PO Box 116, Kawakawa,  
Northland 0243  
P: 09 4040016  
E: [admin@taumarere.school.nz](mailto:admin@taumarere.school.nz)

# 2026



# NAU MAI KI TE KURA KAUPAPA MĀORI O TAUMĀRERE

## Ngā kōrero mai i te Tumuaki

Nau mai rā e te uri o ngā tāngata, e ngā kaitūkau o te māra o Hineāmaru, e te iwi whānui ki Te Kura Kaupapa Māori o Taumārere e tū nei!

E tū nei te kura i raro i ngā puke o Maihi - te tupuna.  
*Ko Hikurangi - Ngā kiekie whāwhānui o Uenuku,*  
*Ko Mōtatau - Te tatau ki Te Reinga.*

Ko ngā awa e rere nei i roto i ngā tini awaawa o te rohe pōtae o Ngātihine, puta atu ki te pūaha o te awa rangatira - ko Taumārere herehere i te riri. E kīa nei te kōrero - Ko te māreretanga o ngā taura herehere o Pokopoko Taniwha ki runga i a Rangiriri.

Tīhei mauri ora!

I tīpakohia te whakatauaki o Tā Himi Henare - “*Ko te reo te mauri o te mana Māori*” hei whāinga mā te kura i runga i te mōhio ko te reo Māori te tatau ki te ao Māori, ā, ko te manako nui, koia ko te wawata mā wā tātou tamariki i te kura - kia rongo ngā tamariki Māori i te āhuareka o te noho ki te ako mā roto i te reo Māori.

Koia ko te whāinga mō ngā akoranga o tō tātou kura. Kia tū Māori ai te Māori i roto i tana ao Māori.



# KO TE REO TE MAURI O TE MANA MĀORI

## Vision - Te Paetawhiti

Te Kura Kaupapa Māori o Taumāreere aims to provide a unique education for our ākonga that is grounded in te ao Māori, and that develops the skills, knowledge and personal attributes that will prepare them for the future. Our kura vision affirms the fundamental importance of te reo Māori to the core of who we are as Māori.

*"Kia  
maumahara ki  
tōu mana  
āhua ake"  
-Tā Himi Henare*

## Mission - Pepeha

Mā tō mātou pepeha e hāpai tō mātou moemoeā, hei whakamaumahara i ngā tamariki ki te miharo o tō rātou ake ahureitanga. Ko tētahi atu kōkiri, me tūhono ngā kaiako me te kura i ngā kaupapa whakaako, akoranga hoki, hei poipoi, hei whakawhanake i taua ahureitanga rā.



# TE AHO MATUA



## Hei Tikanga Ārahi

Ko ngā whakaaro matua e ārahi ana i te marautanga o Te Aho Matua

1. Ko Te Aho Matua te kaupapa nui e tautohu ana i te whakaako me te ako
2. Nō te mātauranga Māori ngā kōrero o Te Aho Matua
3. Ko te pouako me te tamaiti te kawenga pū o te taiao ako

Ko Te Aho Matua te tūāpapa o Te Marautanga o Te Aho Matua. He aratohu, he whakaaturanga e whakatauiria ana i Te Aho Matua. Me āta mārama te hunga o ngā kura kaupapa Māori ki ēnei ariā:

- I ahu mai Te Aho Matua i te mātauranga Māori.
- Ko te tamaiti te pūtake me te arotahi o Te Aho Matua.
- He kawenata a Te Aho Matua i waenganui i a tātou me te wāhi ngaro.
- Ko te ao whānui te akomanga o te tamaiti.
- He māmā, he tere te ako a te tamaiti e harikoa ana.
- Me aro ki te katoa o te tamaiti, otirā ki te tuakiri o te tamaiti.
- He pouako ngā mātua, he mātua ngā pouako.
- He mea hopu noa te nuinga o ngā mea e ako ana.
- He mea nui te horopaki o te taiao ako, ā, me hāngai pū ki te ao Māori, ki te ao o te tamaiti.
- Ma te manaaki, te aroha me te atawhai hei ārahi i te hunga o te kura.
- Ko te reo Māori te reo kawē i te whakaako ki ngā taumata katoa o te kura.
- Kia piritahi, kia mahi tahi ngā pouako me te whānau whānui hei ārahi i ngā tamariki ki te Tino Uaratanga.



# TE WHAKAURU ĀKONGA

## Key considerations

Our enrolment team look at the following when considering enrolment:

- Have tamariki come from Koharanga Reo/ Rumaki education?
- is there a Poureo in the home?
- Is there whānau commitment to learning te reo Māori?

### Apply

Download application form and make an appointment to meet with Tumuaki.

# 1

### Interview

Meet with Tumuaki. Bring application form, past reports, birth certificates etc

An email will be sent within 5 working days regarding enrolment decision.

# 2

### Pre-Pōwhiri

Uniforms can be purchased at the tari  
Transport confirmed  
Timetable shared (Wharekura)  
Learning support (If applicable)

# 3

### Pōwhiri

Pōwhiri for new students happen twice a term which are:

Day 1 of the term  
Monday of week 6

Pōwhiri begins at 9:30am in Kāwaka

# 4

## What to do if enrolment is not successful?

The main reason for an enrolment to be unsuccessful is the reo capability of the ākonga. As a kura kaupapa Māori, our language of instruction is te reo Māori. Tamariki need to be able to understand what the kaiako and other tamariki are saying and respond to them as well.

In saying this, we also take into consideration the aspirations that whānau have for their tamaiti/kōtiro and the level of commitment that the whānau have to the kaupapa.

# NGĀ MAHI IA RĀ

## TE WHAKAHAERE O TE KURA

### TE PERE

#### Te wā tae mai ki te kura:

E tūwhera ana ngā keti ki ngā tamariki ki te tae mai ki te kura mai i te 8:15am . Kua ngā tamariki e whakahekengia mai i mua atu i tēnei wā i te mea horekau kē he kaiako e tiaki papa ana i taua wā.

#### Te mutunga o te kura

E mutu ana te kura i te 3pm ia rā. Me whakamōhio mai koutou te whānau mehemea e noho reiti mai ana tō tamaiti/kōtiro ki te kura kia mōhio ai te kaitiaki papa mō taua wā.

#### Wā whakatā - Paramanawa me te tina

E toru ngā wā e whakatā ai ngā tamariki ia rā i te kura.

Ko ngā wā *paramanawa* he 20 meneti te roa.  
Ko te wā *tina* he 30 meneti te roa.

TE WĀ	KAUPAPA
8:40AM	TAUMATA
8:50AM- 9:55AM	WĀHANGA AKO 1
9:55AM- 10.20AM	PARAMANAWA 1
10:20AM - 11:35AM	WĀHANGA AKO 2
11:35PM - 12:15PM	WĀ KAI NUI
12:15PM - 1:30PM	WĀHANGA AKO 3
1:30PM - 1:45PM	PARAMANAWA 2
1:45PM - 3PM	WĀHANGA AKO 4



Kura layout

## Ngā tino ūaratanga

Kia tū pakari, tū māia hei Raukura mō tōna iwi.

# Hei Raukura

- ***Kua whakakāingatia te reo o Ngātihine ki roto i a ia.***
- ***He ringa raupā mō tōna whanau, mō tōna marae, hapū me tōna iwi.***
- ***Kua riro i a ia i ngā pūkenga, ngā mātauranga, nga kōrero tuku iho e ora ai ia i tēnei ao.***
- ***E tū māia, e tū rangatira ai ia ki roto i tōna ao Māori, i roto hoki i te ao hurihuri.***

Ānei te momo ākongā ka puta hei Raukura.

# mō tōna iwi!



## Ngā tino ūaratanga

Kia tū pakari, tū māia hei Raukura mō tōna iwi.

# He Aronga Whakawhiwhi Tohu nō Ngāti Hine - Te Ara o te Tuna

## Tau 1-3 | HuaKo te tīmatanga – The beginning

Ngā pūkenga e whakatupuria ana:

- Pākaiahi te ngākau ki te ako, e tuwhera ana te hinengaro  
*Curious and open to learning*
- He mea whāngaia e te whānau, e ngā kaiako, e te taiao hoki  
*Nurtured by whānau, kaiako, and environment*
- E whakawhanake ana i te tūrangawaewae me te rārangi whakapapa  
*Developing a sense of belonging and identity*

- E ako ana ki te hura i te ara mō te ako (Learning how to learn)

Tauira kōrero whakawhiwhi tohu:

He hua ahau e poipoia ana.

Ko ā tātou tēina he mea atawhai, he mea whakamarumarū, he mea whakatenatena kia tupu, rite tonu ki te āhuetanga o te hua o te tuna e whanake ana i te tīmatanga o tōna oranga.

*Our youngest learners are nurtured, protected, and encouraged to grow, just as the hua of the tuna are carefully formed at the beginning of life.*



## Tau 4-6 | Tangariki

### Te tupu ake – Growing independence

Ngā pūkenga e whakatupuria ana:

- E piki ana te tūmanawa me te tū motuhake  
*Increasing confidence and independence*
- E ako ana ki te hura i ngā ara hou o te taiao  
*Learning to navigate new environments*
- E hanga ana i te manawaroa me ngā kaupapa hautū  
*Building resilience and basic leadership*
- E hāpai ana i te manaakitanga mōna ake, mō te iwi hoki  
*Developing responsibility for self and others*

Tauira kōrero whakawhiwhi tohu:

He tangariki ahau e ako ana ki te tū motuhake.

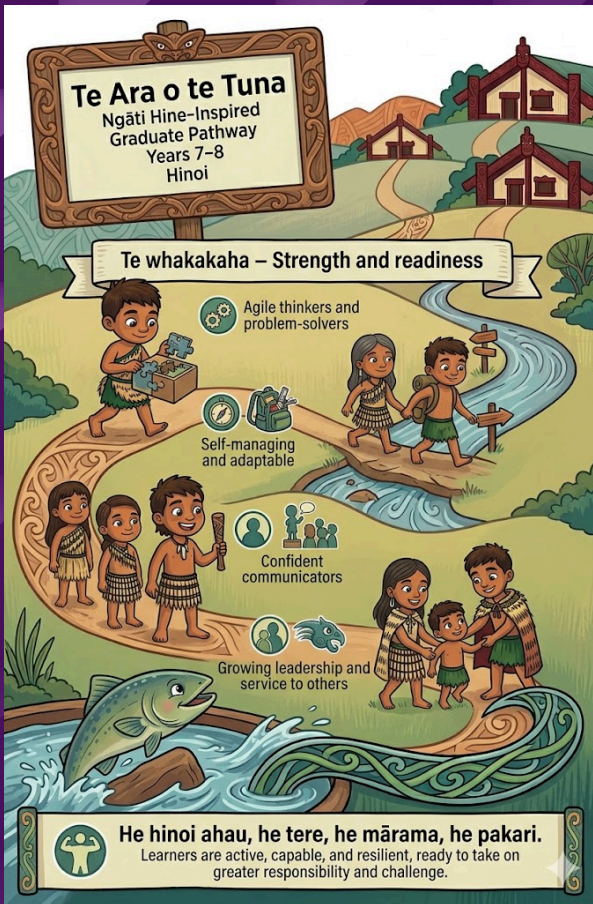
Ka kōkiri whakamua ngā ākonga me te ū o te ngākau, e urutau ana ki ngā wero hou, i te wa tonu e mau ana ki te rākau kōrero o tōna tūrangawaewae.

*Learners begin to move with confidence, adapting to new challenges while remaining connected to their tūrangawaewae.*



## Ngā tino ūaratanga

Kia tū pakari, tū māia hei Raukura mō tōna iwi.



### Tau 7-8 | Hinoi

#### Te whakakaha – Strength and readiness

Ngā pūkenga e whakawhanakehia ana:

- He kairapu otinga, he hīrere te whakaaro  
*Agile thinkers and problem-solvers*
- E āhei ana ki te whakahaere i a ia anō, me te ngāwari ki ngā rerekētanga  
*Self-managing and adaptable*
- He amorangi kōrero e ū ana te ngākau  
*Confident communicators*
- E tupu ana te tū rangatira me te mahi tautoko i te iwi  
*Growing leadership and service to others*

*Growing leadership and service to others*

Tauira kōrero whakawhiwhi tohu:

He hinoi ahau, he tere, he mārama, he pakari.

He ngangahau, he kaha, he manawaroa ngā ākongā, kua tū mārō ki te hāpai i ngā kawenga nui me ngā wero kei mua i te aroaro.

*Learners are active, capable, and resilient, ready to take on greater responsibility and challenge.*

### Tau 9-13 | Tuna Heke

#### Te haerenga nui – Purpose and transition

Ngā pūkenga hei te mutunga o te akoranga:

- He pūmau ki te reo, ki ngā tikanga, me te tuakiri o Ngāti Hine  
*Strong in identity, language, and culture*
- He ringa raupā ki te hautū, ki te ninihi, ki te hāpai i te iwi  
*Able to lead, serve, and support others*
- Kua tūmārō te kōkiri whakamua me te māia o te ngākau  
*Ready to transition with confidence*
- E mārama ana ki ngā kawenga ki tua atu i a ia anō  
*Understanding responsibility beyond self*

*Understanding responsibility beyond self*

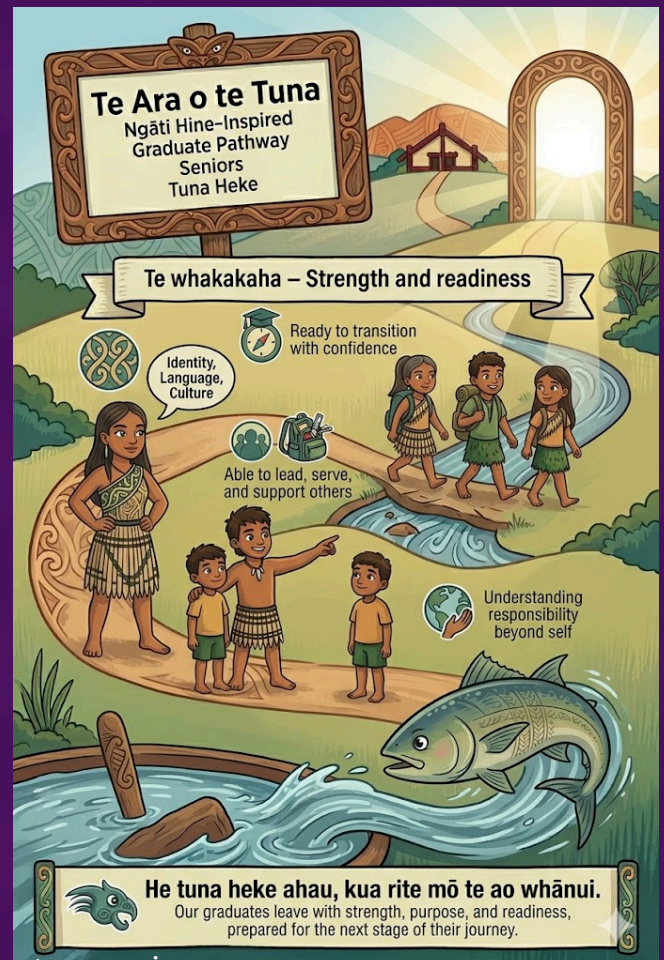
Tauira kōrero whakawhiwhi tohu

(He kōrero whakatū):

He tuna heke ahau, kua rite mō te ao whānui.

Ka kōkiri atu ā tātou graduates me te pūmau o te kaupapa, te pakari o te tinana, me te tūmārō o te hinengaro, kua rite mō te huringa o te tae ki te pae o te rangi.

*Our graduates leave with strength, purpose, and readiness, prepared for the next stage of their journey.*





# TE POARI O TE KURA

3.8 Kia kite nga tamariki ko te Whanau tonu e whakahaere ana i te kura, ko te Whanau hoki e mahi ngatahi ana me nga pouako, ka tupu ia me te mohio ko te wairua me te mana Maori motuhake e kakahu ana i a ia me tona kura.

Ko nga mema o te poari o te kura he kohikohinga tangata mai i nga whanau o te kura. E whitu nga mema poari o te kura - e rima nga tūranga mō nga whānau, kotahi te tūranga mō tētahi o nga kaimahi o te kura, ā, he tūranga anō hoki mō te Tumuaki.

Ko te mahi o te poari he ārahi, he whakarite, he tautoko i nga mahi ako o te kura - ko te whāinga nui mō te poari he tautoko i te tupu o nga tamariki ki tā Te Aho Matua e whakatau nei. Ko nga kōwae mahi a te pāori e hāngai ana ki:

- nga take pūtea o te kura
- nga kaimahi katoa o te kura
- nga whare me te papa whenua o te kura
- nga pahī/ wēne me ōna āhuatanga katoa
- nga kaupapa huhua o te kura.

Name	Position
Manu Sinclair	Tumuaki
Tiakina Milne	Presiding Member
Tapeka Henare	Whanau Rep
Jayme Armstrong	Whanau Rep
Saint Diva Te Kani	Student Rep
Joel Pili	Whanau Rep

E hui ana te poari i te Tūrei, te wiki tuawhā o te marama mai i te Hanuere ki te Noema ia tau. Mēnā he kaupapa tāu, tukuna mai ki tēnei īmera kia tāpirihia ki te rārāngi kōrero o te hui.

Īmera mai ki:

[presidingmember@taumarere.school.nz](mailto:presidingmember@taumarere.school.nz)



**Manu Sinclair**  
Tumuaki



**Tiakina Milne**  
Presiding Member



**Tapeka Henare**  
Whanau Rep



**Jayme Armstrong**  
Whanau Rep



**Saint Diva Te Kani**  
Student Rep



**Joel Pili**  
Whanau Rep

# STEAM TAU 1-6



5.1 Ko nga ahuatanga ako katoa he mea mahi i roto i te koanga ngakau, me te whakaihiihi hinengaro.

## SCIENCE - TECHNOLOGY - ENGINEERING

Ko te mātauranga STEAM he huarahi whakaako, akoranga hoki e whakakotahi ana i te pūtaiao, te hangarau, te reo Māori, te pūkaha, ngā toi, me te pāngarau. He ara ēnei hei ārahi i te hūmārie o te ākonga, i ngā kōrerorero, me te whakaaro arohaehae.

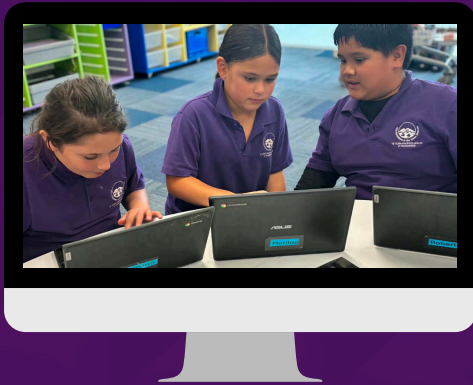
Mā tēnei ka piki te kaha o te akonga ki te:

- Raru ki te tai, puta ki te ao (Whaia ngā tūraru whai kiko)
- Noho i roto i ngā kaupapa akoranga whai take
- Tū pakari ki te whakatika raru
- Awhi i te mahi tahi me ōna painga
- Whai i te nuku o te kete auaha

Mā te STEAM, ka whakamanaia ngā taitamariki hei akonga hihiri e rapu ana i ngā rongoā ki ngā pātai kāore e kitea noatia i runga ipurangi. Ma konei e tupu ai ngā pūkenga rerekē e tū rangatira ai rātou i roto i te ao.

Kei roto tonu te STEAM i te nuku o te Reo Matatini me te Pāngarau.

Kei te timatanga noa mātou e raranga ana i tēnei hei kaupapa mō tō mātou kura. Ka whakahihikoia ngā kaiako mā ngā wānanga whakapakari ngaio ki te kōpanui i te STEAM ki roto i ā rātou mahi i roto i te toru tau kei mua i te aroaro.



Ko te tikanga, ka whakahaerehia he akoranga mō te tūāhua matihiko ki ngā tamariki katoa o te kura tuatahi. Kia oti tēnei, ka hainahia tēnei kirimana e rātou, kātahi anō ka whakaaetia kia whakamahia ngā pūrere matihiko.



## DIGITAL CITIZENSHIP

**S**

**SAFE:** Never give out personal information (full name, email address, phone number, home address, pictures, school name) to anyone you meet online.

**M**

**MATERIALS:** Do not access inappropriate websites or materials. Only access educational materials on school devices.

**A**

**ACCEPT:** Just like we don't accept candy from strangers, don't accept emails, files, or messages from people you don't know or trust.

**R**

**RELIABLE:** Not everything you read online is true and people might not be who they say they are. Make sure you check information before believing it.

**R**

**RESPECT:** Respect all devices, whether they belong to me or someone else. Respect other digital citizens, their privacy and their right to freedom of speech in a digital world. Demonstrate honesty and integrity in a digital world.

**T**

**TELL:** I will tell a parent, teacher, or other trusted adult if someone or something makes me nervous, worried, or uncomfortable online. I will report cyber bullying if I see it happen.

I agree to play it S.M.A.R.R.T online:

# WHAREKURA

Tau 7 - 13

## NGĀ WHAKAMĀRAMATANGA

E toru ngā momo āhuatanga ako ka kitea i roto i te Wharekura o Te Kura Kaupapa Māori o Taumārere.

1. Te Tuāpapa (Core Subjects) - Ka ako tahi ngā ākonga o ngā tau 7/8, Tau 9/10 & NCEA
2. Hurihanga (Electives) - ka ako tahi ngā ākonga katoa (Tau 9 - 13)
3. Pūmanawa (Projects) - ka ako tahi ngā ākonga katoa (Tau 7 - 13)

## TE TUĀPAPA

E TORU ngā wāhanga ako kua whakataungia kā hei Tuāpapa o ngā mahi whakaakoako:

- Te Reo Matatini
- Pāngarau
- Te Reo Pākehā

Mē whau wāhi ngā ākonga katoa ki ngā akoranga o te Tuāpapa ia wāhanga.

## HURIHANGA

Ko ngā Hurihanga, he kaupapa e whakahono ana i ngā wāhanga ako e rua ki tētahi kaupapa ako mō te wāhanga.

## PŪMANAWA

ko te Pūmanawa, he kaupapa e tiro ana ki ngā Pūmanawa o te tangata. Ka tū pūmanawa i ngā WENEREI mō te rā katoa.

## HEI MAHI MĀ TE ĀKONGA

- Wānanga tahi ki tō whānau, ki ō kaiako ki te whakatau i tō huarahi ako mō te wāhanga;
- Me whai wāhi koe ki te whānuiatanga o te marau.



## NGĀ TURE

### MŌ NGĀ ĀKONGA I ROTO I TE KURA

- Me kōrero Māori ngā ākonga o te Wharekura i ngā wā katoa.
- He inu wai noa iho te inu e āhei ana ki te kura.
- Kua e mau rare, he kauri, he tiakarete rānei
- Whakaingoatia ngā kākāhu kura katoa.
- Mehemea he roa ō huruhuru, me here.



# NGĀ HAERENGA

## EDUCATION OUTSIDE OF THE CLASSROOM

Our wharekura aim to provide different experiences for our ākonga that allow them to better understand the world that they live in. We believe that mātauranga can be learned both inside and outside of the classroom.

### Types of haerenga

**Class haerenga** are organised by class teachers and look to extend the learning that is happening in their class. Eg. A visit to Ruapekapeka, Auckland Writers Festival.

**Kaupapa Aho Matua** are events that fall under Te Runanga Nui o ngā Kura Kaupapa. Eg. Te Huinga Reo (T12 - 13) and Wiki Hākinakina (T9 - 13).

**Kaupapa Māori** are events that support and aim to enhance kaupapa Māori. Eg. Te Ahuareka, Taitokerau Festival, hīkoi participation, Manu Kōrero etc.

**Haerenga ki tāwāhi** are biennial haerenga (on the odd years). These haerenga rely heavily on whānau support and must align to Te Mātauranga o Ngātihine.



## NGĀ HAERENGA KI TĀWĀHI

### INTERNATIONAL TRAVEL

Every two years, our wharekura plan, organise and go on international haerenga.

Wharekura haerenga have been separated into the following groups:

#### Tau 7 - 9:

Ākonga in these year groups will visit countries close to Aotearoa - Australia, Pacific Islands

#### Tau 10 - 13

Ākonga in these year groups will plan to further out into the world.

# STAR / GATEWAY

## NGĀ MAHI AKOAKO

Ākonga in Level 1 - 3 NCEA will be offered opportunities to engage with the following external providers. Careers advisor will ensure that their chosen course aligns to their pathway.



Papa Taiao's core mission is to grow Sustainability and Regeneration Education in Aotearoa. Therefore it is our mission to support school's grow their capacity to deliver sustainability programmes. We specialise in creating unique learning experiences that work for the schools we work in.



Experiencing Marine Reserves (EMR) is a national programme of experiential learning about marine conservation. Our programme empowers by providing hands-on experience in the ocean.



NorthTec supports students at secondary school by providing additional experiences and opportunities not available at school that assist students in their transition to tertiary study and employment.



OUR VISION:  
HE TAKAPAU MĀTAURANGA, HE WHĀNAU HUAREWA  
WHĀNAU TRANSFORMATION THROUGH EDUCATION

OUR MISSION:  
KIA ANGITU TE TAUIRA  
TAUIRA SUCCESS

# WHĀNAU TAUTOKO



## Te Aho Matua: Ngā Iwi

Ko te whānau o te tamaiti te tīmatanga o te poipoi, ā, me mātua rongo te tamaiti i te mana o te whānau – i roto i ngā whakahaere, i roto i te mahinga ngātahitanga o te whānau o te tamaiti me ngā pouako.

Kura Kaupapa Māori is whānau driven, and whānau o te kura play an integral part in the success of our ākonga and of our kura as a whole.

In order for our tamariki and our kura to achieve success, your active participation as whānau tautoko and commitment to the kaupapa is **vital and necessary**.

We have outlined what is expected of each whānau:

### Te reo Māori:

- **Me kōrero Māori te whānau hei tautoko i tā rātou tamaiti/kōtiro rānei.**
- We encourage whānau to start or continue their reo reclamation journey in order to support their tamariki here at kura. There are a number of courses or wānanga that support te ako i te reo Māori.

### Te Aho Matua:

- **He kura Aho Matua tēnei.**
- Te Aho Matua are the guiding philosophies that underpin kura kaupapa Māori. The kura will facilitate a number of wānanga Aho Matua throughout the year. It is expected that whānau attend these wānanga.

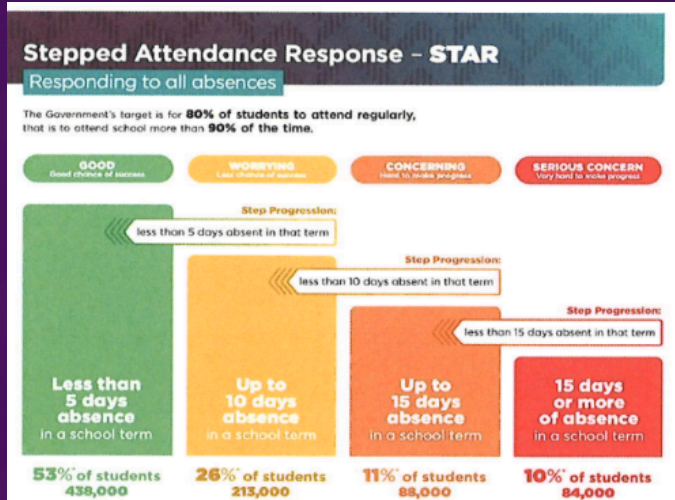
### Communication:

- **Communication between home and kura is really important.** Please ensure that your contact details are up to date in case of emergency.
- One member from each whānau must attend termly whānau hui; these hui will either be at kura or online
- At our kura, we maintain an **open-door policy**. Feel free to come in and talk to kaiako if you have any questions about your tamariki.
- We invite all whānau to join us on haerenga for whānau awhi. However, for overnight stays, it is required that whānau undergo police vetting. Please visit whaea Dino at the tari to complete forms; it's free and is valid for three years.
- **Parent interviews** are held in **Term 1 and 3**. All whānau will be allocated time slots of 15 minutes per child. Appointment Schedules will be sent out the week before. **IMPORTANT:** If you feel you need more time to discuss your child's progress, make an appointment with kaiako for another time.
- **Reports** will be sent home with tamariki on the last week of **terms 2 and 4**.
- **All pānui** will be sent to whānau via text and email, posted on facebook and on our website. Hard copies will also be sent home with tamariki.

## Karāehe Whakapakari Reo Wānanga Reo for whānau

Our kura have weekly evening classes for our whānau to support their reo journey. Please contact the kura if you wish to join - all levels are welcome.

# Attendance Management Plan



## ĀKONGA MĀUIUI

### STREP THROAT

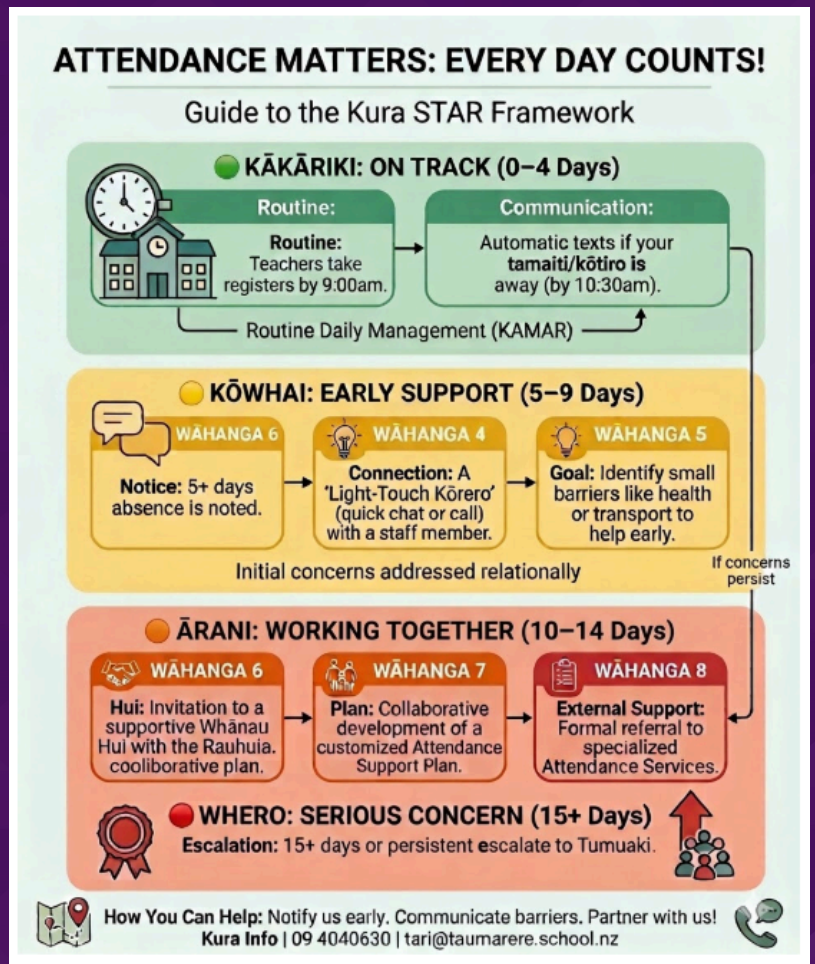
### RUNNY NOSES

### MEDICINE

### ASTHMA INHALER

### KUTU/NITS/LICE

### COVID 19



Please note that if your child tests positive for Strep Throat, they need to be kept home for the first 48 hours of their Antibiotic Cycle.

Ngatihine health trust/ Hauora whānui will be in kura to swab students for Strep Throat. Students can self-refer by telling the nurse they have a sore throat.

Green phlegm (hupe) is a sign of infection and child must stay home until this has cleared up.

If your child requires medicine, please ensure the school is notified and has medicine onsite for your child's needs. Prior Consent needs to be given for kaimahi to administer medicine.

Please make sure an inhaler is kept at school for your asthmatic child.

Please regularly check your child's hair and ensure it is kept nit and lice free.

If your child tests positive for Covid 19 it is recommended to keep them home for 5 days or until they are no longer symptomatic.

If your child has a contagious infection, they must be kept home.

# NGĀ KĀKĀHU KURA

## Te Kura Kaupapa Māori o Taumārere

### Uniform Price List

#### JUNIOUR TIHATE

- SIZES 6-16
- SIZES M-3XL

\$30  
\$40

#### WHAREKURA TIHATE (TAU7-13)

- SIZE 12-4XL

\$40

#### SHORTS

- SIZE 5-16
- SIZE XL-3XL

\$17  
\$22

#### KURA JACKETS

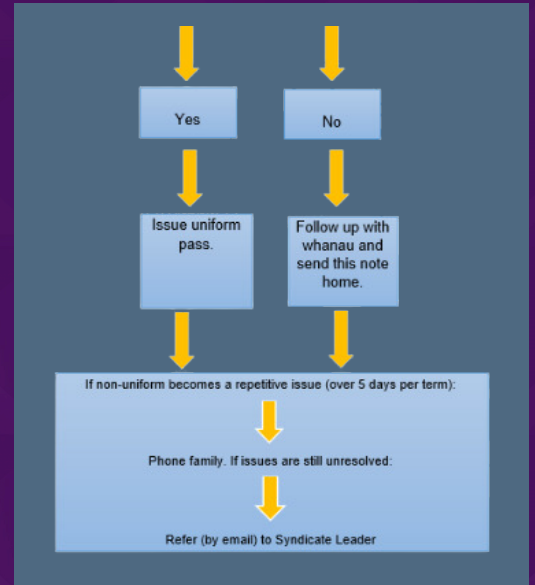
\$54.50

#### TOHU PRINTED KIDSCAN JACKETS

\$15.50

Please contact the tari for size queries  
Payments by Eftpos or Internet Banking only

Contact ph: 09 404 0630  
Email: tari@taumarere.school.nz





# NGĀ RŌPŪ TAUTOKO

<p><b>Social Worker in Schools Ngāpuhi Iwi Social Services</b></p>	<p>These social workers are employed by Ngā Puhi Iwi Social Services and provide early intervention to assist children who are struggling with educational, health, or social development.</p>
<p><b>RTL Resource Teacher of Learning and Behaviour</b></p>	<p><b>Resource Teachers: Learning and Behaviour (RTL)</b> work together with teachers and schools to support the achievement of students in Years 1-10 with learning and/or behaviour difficulties.</p>
<p><b>MoE Ministry of Education</b></p>	<p>Students with learning and behaviour needs may receive support from physiotherapists, occupational therapists, and speech and language therapists from the Ministry of Education, Learning Support.</p>
<p><b>Ngātihine Health Trust</b></p>	<p>Throat swabbing in schools, dental services</p>
<p><b>Ngāpuhi Iwi Social Services</b></p>	<p>Mana Ake, Counselling and whānau support.</p>
<p><b>Te Rōpu Kimiora</b></p>	<p>Child and Adolescent mental health services. Provides counselling, mentoring, medical interventions</p>

**NGĀ KAIAKO  
KURA TEINA**  
TAU 1-TAU 6



**Ngaio Tipene**  
Tau 6 Kaiako



**Tanya Milne**  
Tau 1 & 2 Kaiako/ Rauhuia



**Ashleigh Ngawati**  
Tau 3 Kaiako



**Brenda Critchfield**  
Tau 4 Kaiako/ Rauhuia



**Chantelle Higgins**  
Tau 5 Kaiako



**Tatyana Glassie**  
Kaiako



**Hoana Hati**  
Kaiako



**Sandra Pomare**  
Kaiako



**Huri Kopa**  
Kaiako



**Maureen Thompson**  
Kaiako



**Foxy Cotton**  
Kairiwhi

**NGĀ KAIAKO  
WHAREKURA**  
TAU 7-13



**Khrystal Morunga**  
Tau 7 Kaiako/ Rauhuia



**Manomano Richmond**  
Tau 8 Kaiako



**Jessica Parangi**  
Kaiako Wharekura/  
Rauhuia



**Darlia Walker**  
Kaiako Wharekura



**Matua kauimua Kaka**  
Kaiako/ Tumuaki tuarua



**Posh Ngawati**  
Hakinakina



**Kapura Kaka**  
Kaiako-Mahi toi

# NGĀ KAIHĀPAI



**Manu Sinclair**  
Tumuaki



**Fred Mane**  
Kaimahi tari



**Dino Armstrong**  
Executive Officer



**Waina Jull**  
Pou Tautāwhi



**Shaun Hall**  
HSL Manager



**Tamarah Waiomio-Ashby**  
Kaiawhina Kaiako



**Tapuwae Walker**  
Kaiawhina Kaiako



**Ngametua Aukino**  
Kaiawhina Kaiako



**Wiremu Moses**  
Kaimahi



**Aneeva Cherrington-Christie**  
Kaiawhina Kaiako



**Leanne Kopa**  
HSL/ Kai Taraiwa



**Ringi Watene**  
Kai Taraiwa



**Kahu Mahanga**  
Kai Taraiwa



**Blinky Beattie**  
Kaitiaki



**Rebeckah Beattie-Watene**  
Kaimahi



**Sapphira Watene**  
Kaimahi



**Manaia King**  
Kaiawhina Kaiako



**Frances Cassidy**  
Kai taraiwa



**Amy Armstrong**  
Kaiawhina Tumuaki



# NGĀ PAHI/ WĒNE

**Pahi 1**  
**Kawakawa**  
**(Clarks)**

**Pahi 2**  
**Waiomio**  
**Mōtatau**  
**Matawaia**

**Pahi 3**  
**Kaikohe**

**Wēne 1**  
**Ohaeawai**  
**Okaihau**

**Wēne 2**  
**Kerikeri**  
**Waipapa**

**Wēne 3**  
**Paihia**  
**Haruru**



## NGĀ KŌRERO ĀPITI:

- He rārāngi ingoa tā ia pahi.
- Mehemea kahore tō tamaiti/kōtiro e haere ana mā runga i tana pahi/wēne, me whakamōhio mai ki te tari i mua atu i te 2pm - (09) 4040 630
- E kore ngā tamariki e tukuna ki runga pahi/wēne kē mehemea kahore anō ngā whānau kia whakapā mai.
- Ko whaea Ashleigh te kaiwhakahaere i ngā pahi/wēne mō te kura.
- Kua whakarite he wēne THREAD ki runga i te Messenger.

## TE PAHI/WĒNE O TŌ TAMAITI:

# FRUITS IN SCHOOLS



## KA ORA KA AKO

E whakaritea mai ana he tina mā ngā tamariki i te kura ia rā, ia rā. Ko ngā momo kai ka whāngaihia ki a rātou e hāngai ana ki te tapatoru kai hauora.

Healthy school lunches are provided for tamariki daily. Whānau are encouraged to send tamariki with morning tea. Tamariki are also provided with fresh fruit, muesli bars and fruit and nut snack packets. If your tamariki have any Allergies or dietary requirements it is important to let us know.

He mihi nui ki Te Whatu Ora, ki United Fresh anō hoki e tuku mai nei i ngā huarākau ki te kura hei kai mā ngā tamariki ia wiki.

Fresh fruit and vegetables are provided weekly where they are distributed amongst each class for tamariki to help themselves to.

The programme is funded by Te Whatu Ora and managed by the produce organisation United Fresh.



## BREAKFAST CLUB



Weetbix, yogurt, fruit and toast are set up every morning for tamariki from 8.30am-9am. During the colder season we often offer baked beans, or even porridge. A great initiative to fuel tamariki for the day ahead.



## CONTACT INFORMATION

Whakapā mai



Te Kura Kaupapa Māori  
o Taumārere



09 4040 630



2-6 Station Road  
Moerewa



tari@taumarere.school.nz



www.taumarere.school.nz

Complaints can be emailed  
through to:  
amuamu@taumarere.school.nz



SchoolDocs

All our policies and procedures  
can be found here:

<http://taumarere.schooldocs.co.nz>

Username: **taumarere**

Password: **0211**