




Te Kura Kaupapa Māori o Taumārere

PO Box 116
KAWAKAWA 0243
Tel: 09 4040 630
admin@taumarere.schoolzone.net.nz

1- 6 Station Road
MOEREWA 0211
Bay of Islands
Te Tai Tokerau
Fax: 09 4040 639

Attendance Management Plan

| | | | |
|------------------------|--|----------------------|--|
| Approval: | Date 23.03.2026 School board signature  | Published on: | www.taumarere.school.nz |
| Effective date: | 9 February 2026 | Review date: | End of term 3 |

Overarching attendance objectives and strategic priorities

The Government's target is for 80% of students to attend school regularly, that is to attend school more than 90% of the time. This kura will actively promote and encourage students to attend school.

Rationale for Prioritising Attendance

Regular attendance and positive engagement are essential to student wellbeing, learning progress, and educational success. At Te Kura Kaupapa Māori o Taumārere, attendance is understood as a shared responsibility between the kura and whānau and grounded in whanaungatanga. To ensure that every student is supported, we have updated our attendance process to align with the Ministry of Education's [STAR](#) (Stepped Attendance Response) Framework.

Consistent attendance supports:

- continuity of learning
- social connection and belonging
- wellbeing and hauora
- successful participation in kura life

Strategic Alignment

This plan aligns with the kura:

- Strategic Plan
- Annual Implementation Plan
- Te Aho Matua philosophy
- Pastoral care and wellbeing approaches

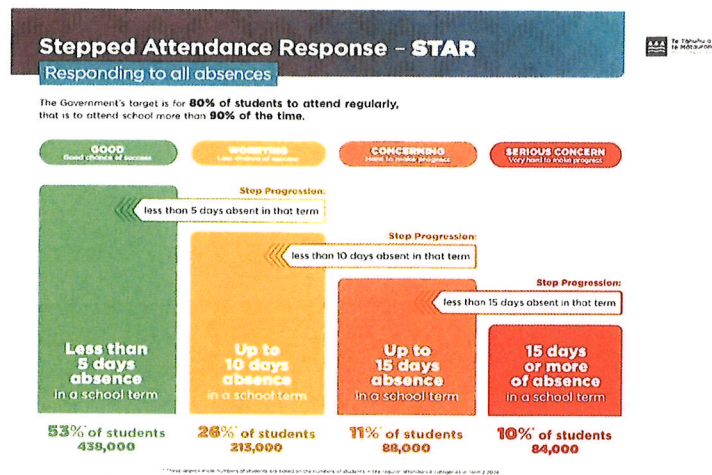
Attendance is monitored as part of the kura's wider approach to engagement, achievement, and ākonganga.

Board Responsibilities

Under the [Education and Training Act 2020](#), all students between six and sixteen years old must be enrolled at school and regular attendance is compulsory. The Board is legally required to ensure all ākonga attend school whenever it is open for instruction.

To meet these duties, the Board will:

- **Prioritise Re-engagement:** Support ākonga in returning to regular attendance through a commitment to their well-being.
- **Monitor & Respond:** Use a Stepped Attendance Response and data-based thresholds to identify and support students in a timely manner.
- **Identify Barriers:** Maintain systems to record absences and identify patterns or obstacles preventing regular attendance.
- **Maintain Transparency:** Ensure the school's attendance management plan is active and accessible on our website.



Tumuaki Responsibilities

The Tumuaki is responsible for the daily management of attendance and ensuring the kura meets its legal obligations. This includes:

- **Implementation:** Developing and leading a Stepped Attendance Response aligned with school thresholds.
- **Investigation & Action:** Ensuring all absences are investigated and that interventions are recorded and followed up.
- **Communication:** Guaranteeing that ākonga, whānau, and staff clearly understand the processes that support regular attendance.
- **Board Reporting:** Providing a termly attendance report to the Board, including data analysis, identified barriers, and the success of current interventions.

Definition of Success

Success is evidenced by:

- improved regular attendance across the kura
- early identification and response to attendance concerns
- strengthened engagement between kura and whānau
- reduced need for external agency referrals

Targets are set through annual planning and reviewed by the Board.

Attendance Expectations

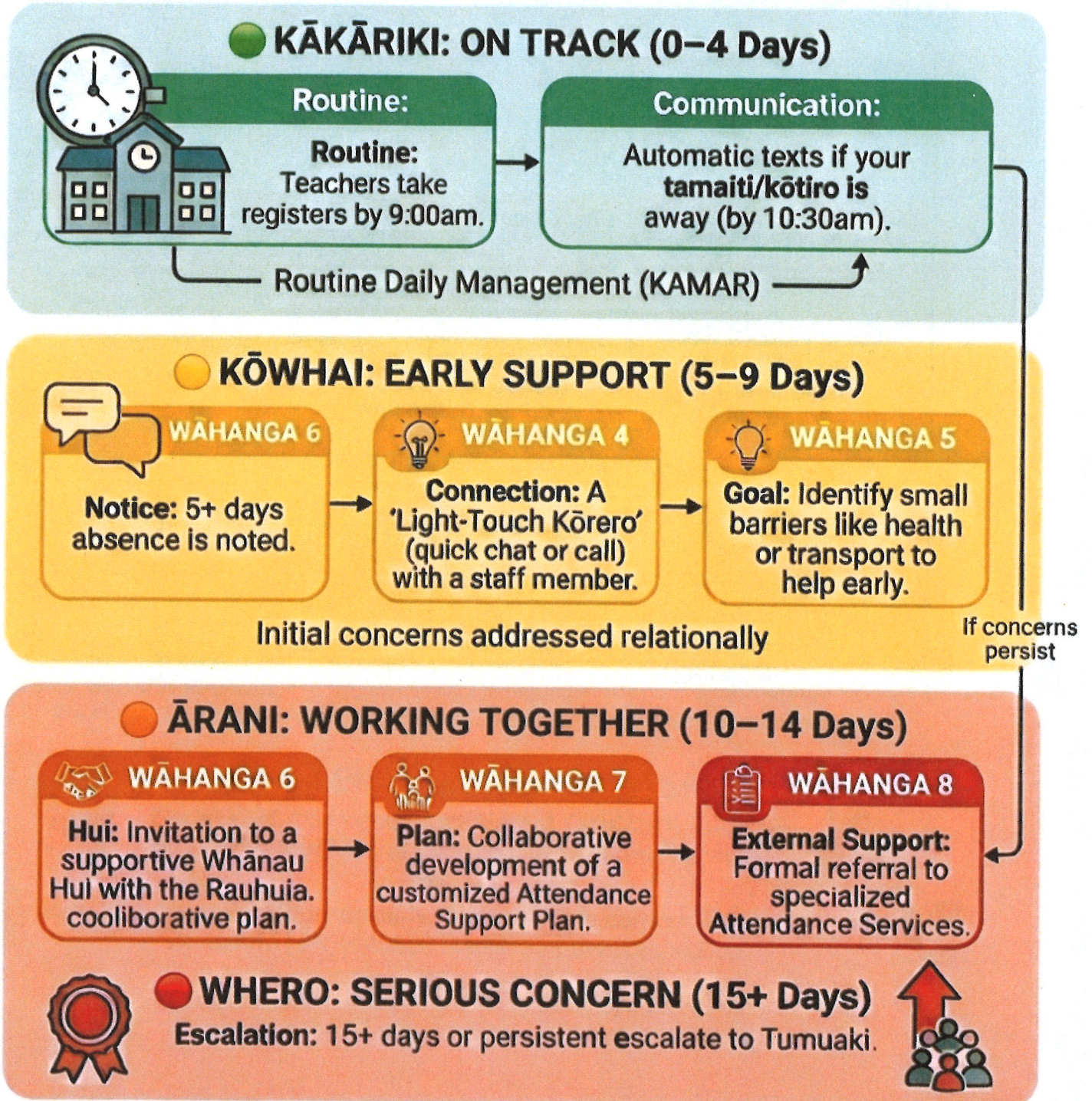
The kura expects that:

- students attend school regularly and on time

- whānau communicate absences promptly
- kaiako record attendance accurately and follow up unexplained absences
- attendance concerns are addressed early and collaboratively

ATTENDANCE MATTERS: EVERY DAY COUNTS!

Guide to the Kura STAR Framework



How You Can Help: Notify us early. Communicate barriers. Partner with us!
 Kura Info | 09 4040630 | tari@taumarere.school.nz

