

# Aepfel Maed Orchard, Snitterfield

## 18th March, 2024

	A	B	C	D	E	F	G	H	I
	B&F	New	Species Name	MK(p)	MK(L)	AP(f)	AP(b)	TOTAL	Comment
1	<b>663</b>	<b>29.001</b>	<i>Diurnea fagella</i>	1	2	2		<b>5</b>	
2	<b>688</b>	<b>32.018</b>	<i>Agonopterix heracliana</i>		1			<b>1</b>	
3	<b>695</b>	<b>32.031</b>	<i>Agonopterix alstromeriana</i>				1	<b>1</b>	
4	<b>1054</b>	<b>49.076</b>	<i>Acleris cristana</i>		1			<b>1</b>	
5	<b>1663</b>	<b>70.245</b>	MARCH MOTH		1		2	<b>3</b>	
6	<b>1746</b>	<b>70.066</b>	SHOULDER STRIPE				1	<b>1</b>	
7	<b>1852</b>	<b>70.156</b>	BRINDLED PUG		1		2	<b>3</b>	
8	<b>1917</b>	<b>70.237</b>	EARLY THORN	1			2	<b>3</b>	
9	<b>2182</b>	<b>73.245</b>	SMALL QUAKER	2	1	1	2	<b>6</b>	
10	<b>2185</b>	<b>73.246</b>	LEAD-COLOURED DRAB			1		<b>1</b>	
11	<b>2187</b>	<b>73.244</b>	COMMON QUAKER	1	4	3	3	<b>11</b>	
12	<b>2188</b>	<b>73.242</b>	CLOUDED DRAB	3	2	3	5	<b>13</b>	
13	<b>2189</b>	<b>73.250</b>	TWIN-SPOTTED QUAKER	1	2	1	2	<b>6</b>	
14	<b>2190</b>	<b>73.249</b>	HEBREW CHARACTER	2	1	1	4	<b>8</b>	
15	<b>2258</b>	<b>73.194</b>	CHESTNUT		1			<b>1</b>	
16				<b>11</b>	<b>17</b>	<b>12</b>	<b>24</b>	<b>64</b>	

### Recorders & Trap Grid References

20	M. Kennard(p) = SP 2046 5843	125w MV
21	M. Kennard (L) = SP 2045 5848	8w LED
22	A. Prior = SP 2038 5848	125w MV
23	A. Prior = SP 2037 5843	125w MV

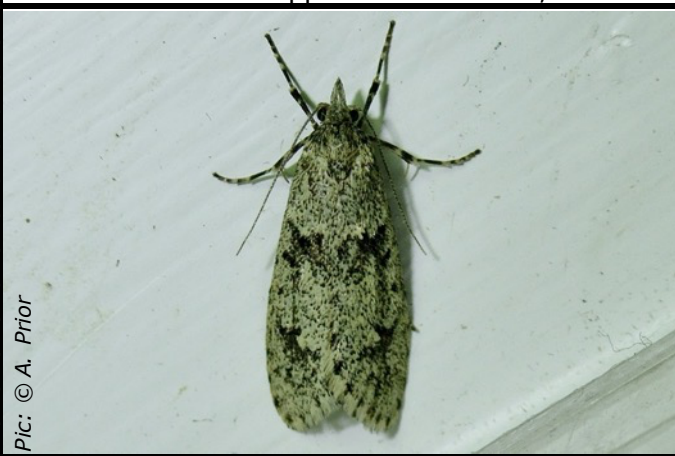
Time: 18:40 > 00:30

Temp: 11.1°C > 9.2°C

Wind: S 1 > 4

Scattered Cloud

### Aepfel Maed Orchard, Snitterfield Moths 18th March, 2024



Pic: © A. Prior

663 *Diurnea fagella*



Pic: © M. Kennard

1054 *Acleris cristana*



Pic: © A. Prior







1663 March Moth (*Alsophila aescularia*)



Pic: © A. Prior

1917 Early Thorn (*Selenia dentaria*)

# Aeppel Maed Orchard, Snitterfield 18th March, 2024

	A	B	C	D	E	F	G	H	I
54									
55									
56									
57									
58									
59									
60									
61	Pic: © A. Prior			Pic: © A. Prior					
62	2182 Small Quaker ( <i>Orthosia cruda</i> )			2185 Lead-coloured Drab ( <i>Orthosia populeti</i> )					
68									
69									
70									
71									
72									
73									
74									
75	Pic: © A. Prior			Pic: © A. Prior					
76	2187 Common Quaker ( <i>Orthosia cerasi</i> )			2189 Twin-spotted Quaker ( <i>Anorthoa munda</i> )					
82									
83									
84									
85									
86									
87									
88									
89	Pic: © A. Prior			Pic: © A. Prior					
90	2189 Twin-spotted Quaker ( <i>Anorthoa munda</i> )			2190 Hebrew Character ( <i>Orthosia gothica</i> )					
95	Pic: © A. Prior			Pic: © A. Prior					