

A close-up photograph of a black mesh fabric, likely insect screening, with a white mesh fabric visible in the bottom left corner. The black mesh is the primary focus, showing its fine, woven texture. The white mesh is partially visible, creating a contrast in color and texture. The lighting highlights the intricate weave of the materials.

WEAVING
EXCELLENCE
WITH
INNOVATION

PHIFER®

INSECT SCREENING



AN INTRODUCTION

Phifer Incorporated is a leader in the insect screen, solar control fabrics, drawn wire, engineered products and designed fabrics industries. As the world's largest producer of aluminum and fiberglass insect screening, Phifer has capitalized on its wire drawing and textile weaving expertise to flourish in these and other related markets. Our products keep pace with technological innovations and design trends, and our workforce reflects the diversity, international versatility and customer service commitment expected in today's marketplace.

MULTI-FUNCTIONAL

Phifer screening offers an array of functions, including protection from harmful insects, excellent outward visibility for optimal views, ventilation, durability, and reduced solar heat and glare to create a more comfortable environment.

From tightly-woven aluminum screen for tiny insects to the more breathable, durable vinyl-coated polyester of TuffScreen[®], Phifer's large selection of screen options provides the variety you need to complement any commercial or residential space. Most Phifer screens are available in wide widths to cover large window, porch or pool enclosure openings.

QUALITY SECOND TO NONE

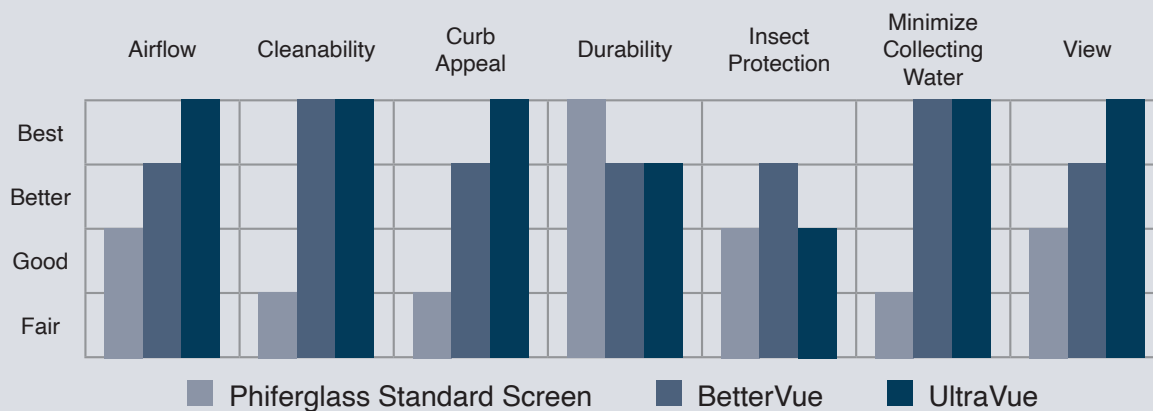
Phifer's quality standards are among the highest in the world. Our screening products are produced in our state-of-the-art facility in Tuscaloosa, Alabama USA under strict guidelines through ISO-certified production and lean manufacturing processes. From yarn coating to packaging, every step of the production process is checked to ensure only the finest quality screens are given the Phifer name.

ENVIRONMENTALLY RESPONSIBLE

At Phifer, we're committed to minimizing the impact on the environment from our manufacturing processes and finished products and incorporating environmental stewardship with our corporate goals ... and yours. We use a solutions-oriented approach as we partner with individuals, businesses, industry associations and governmental agencies to achieve their goals of energy conservation and environmental preservation. Phifer is the world's leader in the manufacture and sale of energy-saving sun control fabrics for both the residential and commercial markets.

Phiferglass® Insect Screen

FOR WINDOWS, DOORS AND PORCHES



Designed for performance, Phifer offers a complete line of fiberglass screen products for windows and doors that emphasize the outward view, maximize airflow and ventilation, and provide protection from pesky insects. True to Phifer's commitment to quality and craftsmanship, these screens are woven from permanent glass yarn coated with a protective vinyl to ensure lasting beauty, color and flexibility.

ULTRAVUE®

COLORS Black

FEATURES



- Superior openness provides increased airflow and more optical clarity for a crisp, more brilliant outward view
- Improves light transmittance in low-E glass windows, offering a brighter view
- Ideal for windows where the focus is on the view
- Made with Water Shed Technology™

BETTERVUE®

COLORS Black

FEATURES



- Greater openness provides better airflow and more optical clarity for a sharp, more brilliant outward view
- Improves light transmittance in low-E glass windows, offering a brighter view
- Passed accelerated weathering tests (QUV 1200 hrs. and Xenon Arc 2500 Kjs.)
- Made with Water Shed Technology™

PHIFERGLASS® STANDARD SCREEN

COLORS Charcoal and Silver Gray

FEATURES



- Traditional choice for windows and doors
- Offers good ventilation and insect protection
- Will not rust, corrode or stain



Water Shed Technology™ gives BetterVue® and UltraVue® a clear view for the life of the product by repelling water and resisting dirt and grime, making them much less likely to accumulate on the screen. A rain shower or gentle washing with water will quickly remove any remaining debris.

Phifer's Water Shed Technology uses an advanced water repellent (hydrophobic) coating technology that allows the screen to easily repel water and other substances. Hydrophobic surfaces, such as those with Water Shed Technology, are much more difficult for substances to stick to. Water Shed Technology virtually eliminates window panning, a process whereby water fills the open squares in the screen during a rainstorm. With Water Shed Technology, the rain water beads up and rolls off the screen, keeping your view clear, even during a rainstorm.

Phiferglass® Insect Screen

FOR POOL AND PATIO ENCLOSURES



When the weather heats up, it's only natural to spend more time outdoors. But nagging insects can threaten to derail warm weather plans. Phifer makes it easy to stay on course with a lineup of multi-functional fiberglass pool and patio screen options to help reclaim outdoor living spaces and transform ordinary pools and patios into outdoor sanctuaries.

18X14 POOL AND PATIO SCREEN

COMPOSITION 18x14 mesh, .013 fiberglass screen

COLORS Charcoal and Silver Gray

FEATURES

- Traditional choice for pool and patio enclosures



- Excellent for large openings requiring extra strength
- Suitable for retractable systems
- Offers good ventilation and insect protection

20X20 NO-SEE-UM SCREEN

COMPOSITION 20x20 mesh, .013 fiberglass screen

COLORS Charcoal and Silver Gray

FEATURES

- Provides excellent protection from small insects



- Offers good ventilation and visibility

GLAS-SHIELD™

COMPOSITION Vinyl-laminated 18x14 mesh, fiberglass screen

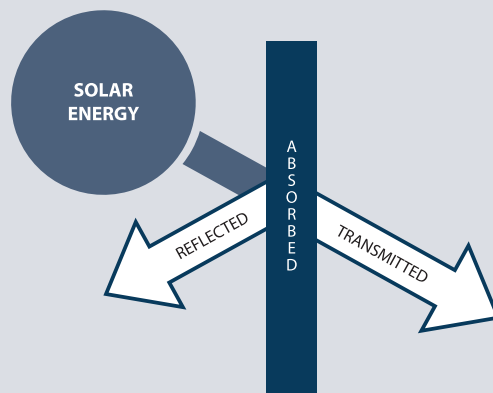
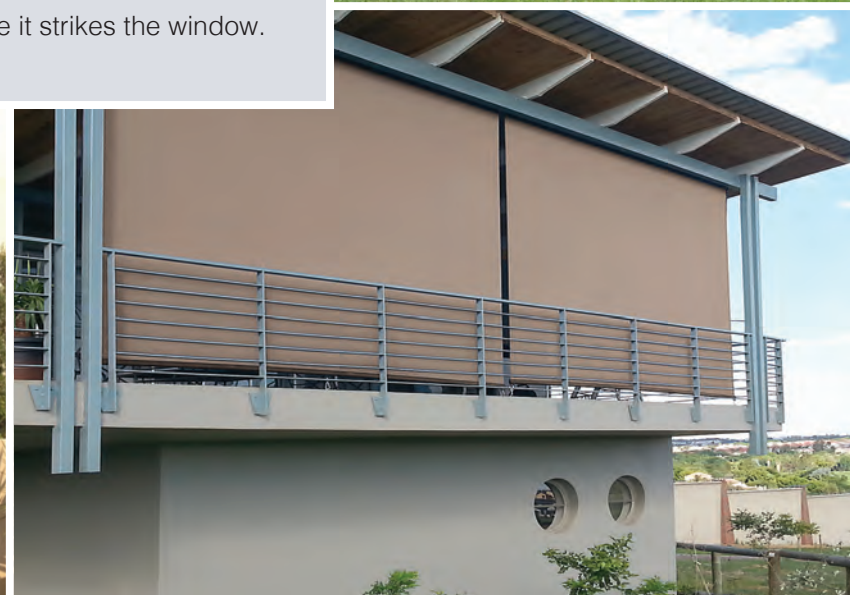
COLORS Charcoal

FEATURES

- Keeps debris out of enclosure areas
- Functions as a privacy screen
- Ideal for installation in lower enclosure panels

Exterior Sun Control Screen

FOR WINDOWS, DOORS AND PORCHES



In midsummer, as much as 230 BTUs can fall on each unprotected square foot of glass. With Exterior Sun Control Screen installed, the sun's heat and glare is reflected, absorbed and dissipated before it strikes the window.

Phifer's Exterior Sun Control Products absorb and dissipate 65 to 97 percent of the sun's heat and glare before it reaches the window or door glass. Sun control screens keep living spaces cooler, help reduce energy costs, protect furnishings against fading and provide daytime privacy. All of the Phifer Sun Control Screening products protect against annoying insects – just like conventional screening – and offer good outward visibility. These energy-saving products are designed to enhance a variety of exterior building facades and are easily installed for window and door or enclosure screening.

SUNSCREEN®

COMPOSITION Ribbed-weave, vinyl-coated fiberglass screen

COLORS Charcoal, Silver Gray and Bronze

FEATURES

- Blocks up to 70% of solar heat and glare



SUNTEX® 80/90

COMPOSITION Vinyl-coated polyester screen

COLORS Black, Brown, Grey, Beige, Stucco and Dark Bronze

FEATURES

- SunTex 80 blocks up to 80% of solar heat and glare



- SunTex 90 blocks up to 90% of solar heat and glare
- Heavy-duty and pet resistant

SOLAR INSECT SCREENING

COMPOSITION 20x30 mesh, vinyl-coated fiberglass screen

COLORS Charcoal

FEATURES

- Blocks up to 65% of solar heat and glare



- Provides good insect protection

SUNTEX® 95/97

COMPOSITION Full basketweave, vinyl-coated polyester screen

COLORS Carbon, Stucco, White, White/Grey, Sand, Alpaca, Chestnut, Mocha, Dark Bronze and Black

FEATURES

- SunTex 95 blocks up to 95% of solar heat and glare



- SunTex 97 blocks up to 97% of solar heat and glare
- 126" widths to cover large openings
- Suitable for retractable systems

SUPER SOLAR SCREENING+

COMPOSITION Vinyl-coated fiberglass screen

COLORS Charcoal

FEATURES

- Blocks up to 90% of solar heat and glare



- Offers the ultimate in shading protection

Aluminum Insect Screen

FOR WINDOWS, DOORS AND PORCHES



Phifer's Aluminum Screening sets the standard for the screening industry's level of quality and dependability with a precision-woven and uniform-coated screen mesh. Dark aluminum screens offer the best visibility of the product line. All aluminum screens provide good ventilation and insect protection.

ALUMINUM INSECT SCREEN

COMPOSITION	Standard mesh aluminum screen
COLORS	Black, Brite and Charcoal
FEATURES	<p>Black</p> <ul style="list-style-type: none">• Offers the best outward visibility• Durable, weather-resistant finish, produced with Phifer's electrodeposition paint system, reduces glare• Consumer's first choice for best exterior view <p>Brite</p> <ul style="list-style-type: none">• Durable, traditional and natural aluminum finish <p>Charcoal</p> <ul style="list-style-type: none">• Offers improved outward visibility• Durable, weather-resistant finish, produced with Phifer's electrodeposition paint system, reduces glare

ALUMINUM SCREEN FOR TINY INSECTS

COMPOSITION	Tighter mesh, aluminum screen
COLORS	Black
FEATURES	<ul style="list-style-type: none">• Tightly-woven to protect against tiny insects like gnats, sandflies and no-see-ums• Provides excellent visibility and airflow• Durable, weather-resistant finish, produced with Phifer's electrodeposition paint system, reduces glare

Specialty Metal Screen

FOR WINDOWS, DOORS AND PORCHES



Bronze, stainless steel and galvanized steel – Phifer covers the bases with a host of metal screening options suitable for window, door and porch applications. Strength and durability combine with good ventilation and insect protection for this range of traditional woven wire products.

BRONZE SCREEN

COMPOSITION	90% copper and 10% zinc screen
COLORS	Bronze*
FEATURES	<ul style="list-style-type: none">• Architect-specified for historical sites• Metal screen provides strength and durability

SEEVUE®

COMPOSITION	Stainless steel metal screen
COLORS	Black
FEATURES	<ul style="list-style-type: none">• Improves visibility with fine diameter that maximizes outward view• Offers good ventilation while providing excellent protection from insects

GALVANIZED SCREEN

COMPOSITION	Standard steel screen
COLORS	Gray
FEATURES	<ul style="list-style-type: none">• High performance• Galvanized with a protective coating to prevent rusting and enhance durability• Ideal for a number of outdoor and industrial uses



Phifer's Bronze Screen brings back the nostalgic look of older homes.

**The brite copper color of Bronze Screen weathers to a beautiful dark bronze finish.*

Heavy-Duty Screen

FOR WINDOWS, DOORS AND PORCHES



Defined by extra strength, durability, aesthetic appeal and damage resistance, Phifer's selection of heavy-duty screening products provides unique alternatives to traditional insect screening. While continuing to uphold the standard for good outward visibility, these screen options are tear and puncture resistant to minimize damage by pets or in high traffic areas.

PETSCREEN®

COMPOSITION	Vinyl-coated polyester
COLORS	Black and Gray
FEATURES	<ul style="list-style-type: none"> • Pet resistant • Heavy duty • Resists tears, punctures and other damage caused by pet claws and paws • Built-in Microban® antimicrobial protection to protect pets from harmful bacteria



TUFFSCREEN® NO-SEE-UM

COMPOSITION	Vinyl-coated polyester
COLORS	Black
FEATURES	<ul style="list-style-type: none"> • Tight, durable mesh • Provides excellent protection from small insects • Offers good daytime privacy • Suitable for retractable systems



TUFFSCREEN®

COMPOSITION	Vinyl-coated polyester
COLORS	Black
FEATURES	<ul style="list-style-type: none"> • Heavy duty • Ideal for use in high-traffic areas • Durable; resists damage from pets, tears and punctures • Excellent choice for patios, porch enclosures, retractable systems, windows and doors



Heavy-Duty Screen

FOR POOL AND PATIO ENCLOSURES



Designed for protection against errant golf balls, tree limbs, small insects or pets, Phifer's lineup of heavy-duty screening meets the unique needs of the pool and patio market. Additional applications for these products include retractable or motorized screening systems and wide-width, "picture view" pool enclosure openings.

TUFFSCREEN®

COMPOSITION	Vinyl-coated polyester
COLORS	Black
FEATURES	<ul style="list-style-type: none"> • Heavy duty • Ideal for use in high-traffic areas • Durable; resists damage from pets, tears and punctures • Excellent choice for patios, porch enclosures, retractable systems, windows and doors



PETSCREEN®

COMPOSITION	Vinyl-coated polyester
COLORS	Black and Gray
FEATURES	<ul style="list-style-type: none"> • Pet resistant • Heavy duty • Resists tears, punctures and other damage caused by pet claws and paws • Built-in Microban® antimicrobial protection to protect pets from harmful bacteria



TUFFSCREEN® NO-SEE-UM

COMPOSITION	Vinyl-coated polyester
COLORS	Black
FEATURES	<ul style="list-style-type: none"> • Tight, durable mesh • Provides excellent protection from small insects • Offers good daytime privacy • Suitable for retractable systems



Small Insect Protection Screen

FOR WINDOWS, DOORS AND PORCHES



Phifer offers a select variety of small insect protection screen products. These tightly-woven screens were developed specifically to protect against tiny insects while providing good ventilation, visibility and daytime privacy. Options include 20x20 No-See-Um Screen (densely-woven fiberglass screen), TuffScreen® No-See-Um (heavy-duty, vinyl-coated polyester screen), and Aluminum Screen for Tiny Insects (tightly-woven aluminum screen).

20X20 NO-SEE-UM SCREEN

COMPOSITION 20x20 mesh, .013 fiberglass screen

COLORS Charcoal and Silver Gray

- FEATURES**
- Provides excellent protection from small insects
 - Offers good ventilation and visibility



TUFFSCREEN® NO-SEE-UM

COMPOSITION Vinyl-coated polyester

COLORS Black

- FEATURES**
- Tight, durable mesh
 - Provides excellent protection from small insects
 - Offers good daytime privacy
 - Suitable for retractable systems



ALUMINUM SCREEN FOR TINY INSECTS

COMPOSITION Tighter mesh, aluminum screen

COLORS Black

- FEATURES**
- Tightly-woven to protect against tiny insects like gnats, sandflies and no-see-ums
 - Provides excellent visibility and airflow
 - Durable, weather-resistant finish, produced with Phifer's electrodeposition paint system, reduces glare

Retractable Screen

FOR WINDOWS AND DOORS



When it comes to vinyl-coated fiberglass insect screening for retractable screen systems, Phifer leads the market. Phifer has engineered several types of stiff fiberglass screening with properties required for efficient fabrication of and operation in most retractable screens.

BETTERVUE® ELITE

COMPOSITION Vinyl-coated fiberglass

COLORS Black and Silver Gray

- FEATURES**
- Allows approximately 20% better airflow and optical clarity
 - Approximately 15% thinner and provides 10% better insect protection
 - Suitable for retractable systems



Products that are also suitable for retractable applications include:

- SunTex® 95/97
- TuffScreen®
- TuffScreen® No-See-Um
- 18x14 Pool and Patio Screen

ELITESCREEN®

COMPOSITION Vinyl-coated fiberglass screen

COLORS Charcoal and Silver Gray

- FEATURES**
- Expressly developed for roller screen applications
 - The industry standard used by major roller screen manufacturers worldwide
 - Offers good ventilation and insect protection



FIBERGLASS STIFF 18X14 SCREEN

COMPOSITION 18x14 mesh, .013 vinyl-coated fiberglass screen

COLORS Charcoal and Silver Gray

- FEATURES**
- Offers a higher stiffness than standard screen for improved performance in retractable screens
 - Ideal for roller and retractable screens that require more strength and durability



SCREEN FEATURES

WATER SHED TECHNOLOGY™

Phifer's Water Shed Technology™ uses an advanced water repellent (hydrophobic) coating technology that allows the screen to easily repel water and other substances. This same technology is used in a variety of other products such as upholstery, clothing, marine, food packaging, cookware, and cell phones. Hydrophobic surfaces, such as those with Water Shed Technology, are much more difficult for substances to stick to. Water Shed Technology virtually eliminates window panning, a process whereby water fills the open squares in the screen during a rainstorm. With Water Shed Technology, the rain water beads up and rolls off the screen, removing water, dirt, dust and grime and keeping your view clear, even during a rainstorm.



GREENGUARD

GREENGUARD Certification ensures products have met some of the world's most rigorous and comprehensive standards for low emissions of volatile organic compounds (VOCs) into indoor air. Phifer was the first manufacturer in the window screening industry to achieve GREENGUARD certification. Certification is completely voluntary and ensures that the highest industry standards are being applied to maintain indoor air quality for the health and safety of building occupants.



PRODUCT CERTIFIED FOR
LOW CHEMICAL EMISSIONS
UL.COM/GG
UL 2818

MICROBAN®

Microban, the leading brand of antimicrobial protection, works to continuously inhibit the growth of bacteria, mold and mildew that can cause stains, odors and product deterioration. Microban antimicrobial protection is infused into many Phifer products for lasting protection that won't wash off or wear away for the lifetime of the screening or fabric. Phifer screening infused with Microban antimicrobial technology is ideal for any commercial or residential environment where microbes are a concern, including healthcare, hospitality, home, office, schools and institutions. For a list of the screening and sun control fabrics that include Microban, refer to the chart or product specification information.



UV PROTECTION

Many Phifer sun control fabrics have received the Seal of Approval by the Melanoma International Foundation (MIF) for effectiveness in preventing sun damage to the skin or eyes. For a list of the sun control fabrics that include the MIF Seal of Approval, refer to the chart or product specification information.



ENERGY SAVINGS

Solar heat gain can account for up to 50 percent of a building's energy costs, according to the U.S. Department of Energy. By reflecting solar energy, Phifer's sun control fabrics can reduce solar heat gain, lower energy costs and improve comfort.



PHIFER INSECT SCREENING	NUMBER OF COLORS	WIDE WIDTHS	WATER SHED TECHNOLOGY	GREENGUARD	MICROBAN	MIF APPROVED	ENERGY SAVINGS	SAFE USE	MADE IN USA
ULTRAVUE	1		✓	✓				✓	✓
BETTERVUE	1		✓	✓				✓	✓
PHIFERGLASS STANDARD SCREEN	2			✓				✓	✓
18X14 POOL & PATIO SCREEN	2	✓		✓				✓	✓
20X20 NO-SEE-UM SCREEN	2	✓		✓				✓	✓
GLAS-SHIELD	1							✓	✓
SUNSCREEN	3			✓			✓	✓	✓
SOLAR INSECT SCREENING	1			✓			✓	✓	✓
SUPER SOLAR SCREENING+	1			✓		✓	✓	✓	✓
SUNTEX 80	6			✓	✓		✓	✓	✓
SUNTEX 90	6	✓		✓	✓	✓	✓	✓	✓
SUNTEX 95	10	✓		✓	✓	✓	✓	✓	✓
SUNTEX 97	10	✓		✓	✓	✓	✓	✓	✓
ALUMINUM INSECT SCREEN	3							✓	✓
ALUMINUM SCREEN FOR TINY INSECTS	1							✓	✓
BRONZE SCREEN	1							✓	✓
SEEVUE	1							✓	✓
GALVANIZED SCREEN	1							✓	✓
PETSCREEN	2			✓	✓			✓	✓
TUFFSCREEN	1	✓		✓	✓			✓	✓
TUFFSCREEN NO-SEE-UM	1	✓		✓	✓			✓	✓
BETTERVUE ELITE	2			✓	✓			✓	✓
ELITESCREEN	2			✓				✓	✓
FIBERGLASS STIFF 18X14 SCREEN	2	✓		✓				✓	✓

SAFE USE

Phifer screen products are Prop 65-compliant and safe to use.



PROUDLY MADE IN THE USA

In 1952, J. Reese Phifer, our founder, established Phifer Incorporated as a weaver of aluminum insect screening. The family-owned and-operated company has since become a leading manufacturer of innovative, precision-woven metals and textiles, coated yarns and related materials for filtration, reinforcement, ventilation and a variety of other industrial applications.



Phifer's weaving expertise has broadened over the years, allowing the company to enter and flourish in the sun control fabrics, aluminum wire and designed fabrics industries, both domestically and internationally. Our products and workforce reflect the diversity and customer service commitment expected in today's marketplace.



P. O. Box 1700 • Tuscaloosa, Alabama 35403-1700 USA
Phone: 205.345.2120 • FAX: 205.750.4890
Toll Free USA/Canada: 1.800.854.9473
phifer.com • ISO Registered



™ Trademarks of PHIFER INCORPORATED.
® Registered trademarks of PHIFER INCORPORATED.
™ UL, the UL logos and the UL mark are trademarks of UL LLC.
® MICROBAN is a registered trademark of Microban Products Company.

© PHIFER INCORPORATED, 2022
Tuscaloosa, Alabama USA
V22 3026650