



## 6" Commercial Arc Drain

5' to 120' floor drain with a 1/16" slope per foot

5' sections makes it easy to get your desired length

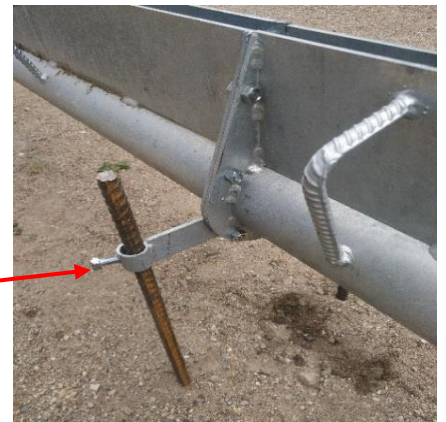
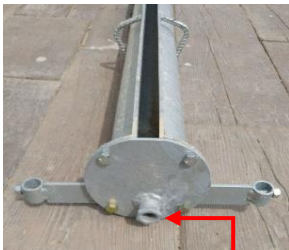
All drains and sump pits come with pipes welded on for ease of setting height

All drains and sump pits come galvanized

A 1/2" NPT gives the option for a fresh water port at the end of the floor drain to assist with clean out

Every section is numbered for ease of assembly

Heavy duty lid on sump pits to withstand the heaviest loads



## Sump Boxes



Width  
Length  
Depth

24X24X24"  
24x24x30"  
24X48X30"  
30X30X36"  
36x36x48"

	Tri entry	dual comp.	4" Discharge
24X24X24"	✓		✓
24x24x30"	✓		✓
24X48X30"	✓	✓	✓
30X30X36"	✓		✓
36x36x48"	✓		✓

