



## 2" Residential Arc Drain



5' to 25' floor drain with a 1/16" slope per foot

5' sections makes it easy to get your desired length



All drains and sump pits come with pipes welded on for ease of setting height

A 1/2" NPT gives the option for a fresh water port at the end of the floor drain to assist with clean out

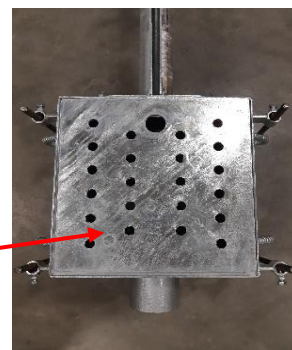


All drains and sump pits come galvanized



Every section is numbered for ease of assembly

3/16" lid on sump pits to withstand light vehicles



## Sump Boxes

W L D	Single entry	Dual entry	Tri entry	dual comp.	3" Discharge
12X12X12"	✓				✓
12X12X12"		✓			✓
16X24X16"			✓	✓	✓

