

Y6 Parents Welcome Evening

2025-2026



Aims

- Overview of our school and values
- Meet the team
- Our Curriculum
- Key dates
- SATs
- Home school communication
- Homework
- Uniform
- Behaviour
- Notices

Overview of our school and values



*At Lace Hill Academy we reach for the stars;
our pathways are endless.*



Meet the Y6 team



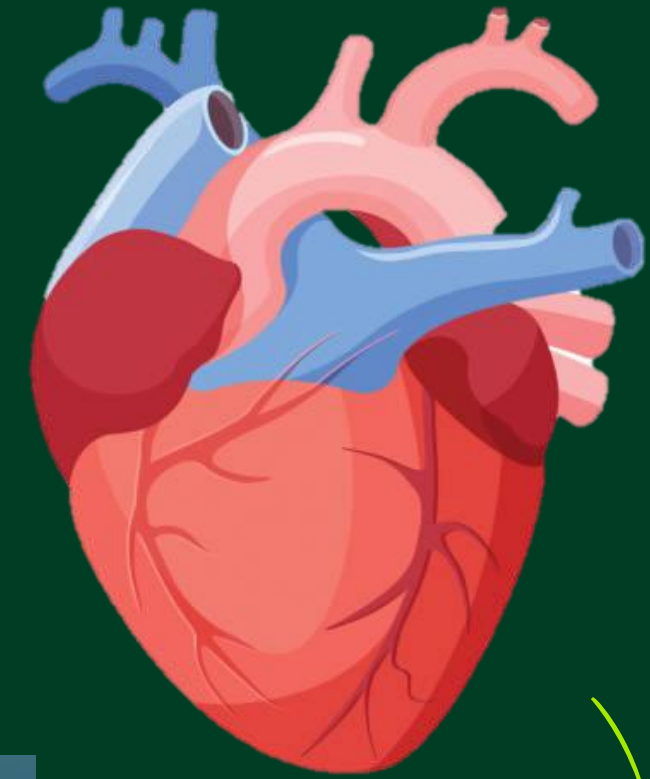
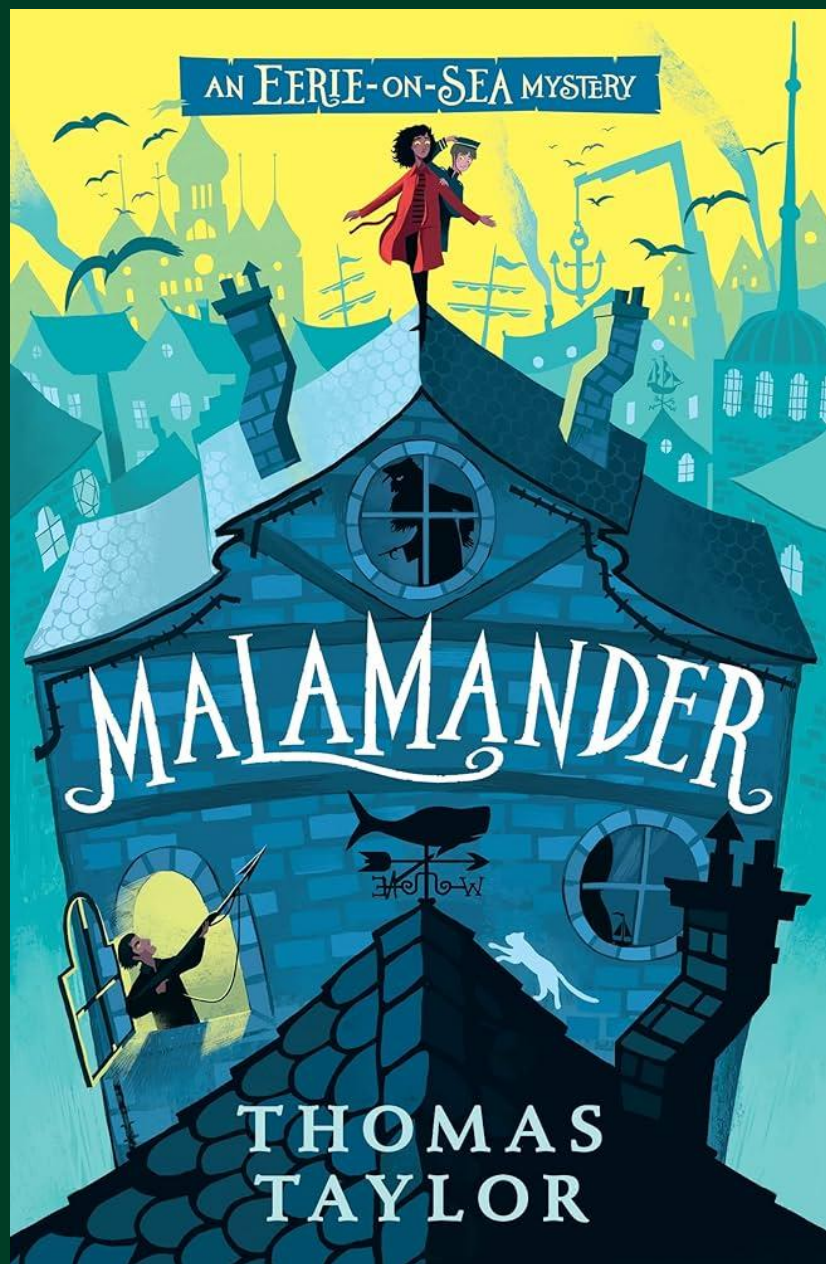
Mrs Brewer
Class Teacher
Monday- Friday



Miss Ord
Monday- Friday
HLTA



Our Curriculum



Curriculum updates can be found
on the website.

Y6 Curriculum Map

	Autumn			Spring			Summer	
Class Novels	Malamander Thomas Taylor	I am Malala Malala Yousafzai		Floodland Marcus Sedgwick			Clockwork Phillip Pullman	The Final Year Matt Goodfellow
Talk 4 Writing	Beowulf Poetry: Kennings	Journalistic Writing	A Christmas Carol Poetry: Personification – City Jungle	The Old Mill Poetry: The Highwayman	Discussion Texts	Harry Potter Poetry: Spine Poem	Range of independent writing: Biography/Explanation/Formal Letter of complaint	
Maths	Number: Place Value Number: Four Operations	Number: Fractions Measurement: Converting Units	Number: Fractions, Decimals & Percentages Number: Algebra Number: Ratio	Measurement: Perimeter, Area and Volume Statistics	Geometry: Properties of Shape Geometry: Position and Direction	Consolidation		
Science	Why is our heart the most important pump we own? Animals Including Humans	How do we really see? Light	How does a circuit work? Electricity	How do we classify living things? Living Things and Their Habitats	Are humans still evolving? Evolution and Inheritance	What is the science behind sport? Second Look Science		
History	Anglo Saxons and the Vikings. Raiders or Settlers?						What influence did the Ancient Greeks have on the western world?	
Geography				What is the impact of natural disasters?	Is development always a change for the better?	What can I find out about Greece?		
RE	Does it matter what you believe about creation?	Is “God made Man” a good way	Do clothes express belief?	Is the resurrection important to Christians?	Can we know what God is like?	Are saints encouraging role models?		

		Christmas Story				
PE	Football Tag Rugby	Netball Hockey	Dance Handball	Gymnastics OAA	Tennis Cricket	Rounders Athletics
PSHE	Being Me in My World	Relationships	Celebrating Difference	Dreams and Goals	Healthy Me	Changing Me
Computing	E-Safety	Programing Video Game	Animation Animated Cartoon GIF	Artificial Intelligence Machine Learning for Kids	Sound Podcasting	Video Creation Special Effects
French	Sport	Football	In my house	Planning a French holiday	Visiting places	Consolidation
Art	Painting and Mixed Media		Craft and Design		Drawing	
Design and Technology		Cooking and Nutrition: Come dine with me	Electrical Systems: Steady hand game	Textiles: Waistcoats		Mechanical Systems: Automata toys Structure: Playgrounds and Stadiums
Music	Dynamics, Pitch and Texture	Theme and Variations (Pop Art)	Film Music	Composing and performing a Leavers' song	Ukulele Lessons	
Suggested Educational Visits or Visitors	Anglo-Saxon workshop	Pantomime		Residential		Gawcott Solar Farm

Our Curriculum

PE days — Monday & Tuesday

Music — Specialist teacher for ukulele lessons in spring term

Proposed Trips and Events

Autumn Term

- Anglo Saxon Workshop (In School)
- Pantomime Trip (December)

Spring Term

- Residential (March)
- Young Voices (optional trip Y3-6) Campfire Trust Event.

Summer Term

- Gawcott Solar Farm



Y6 Residential

In the Spring term, we are offering a 4 day and 3 night residential at Condover Hall for our Y6 children.

This is an outdoor adventurous trip where the children will take part in activities such as abseiling, aerial trek, raft building, trapeze, low ropes, problem solving games, sensory trail. There is a balance of activities for all children to enjoy and take part in.

Y6 Residential



Key dates

Autumn Term:

Tuesday 9th September = Practice Transfer Test

Thursday 11th September = Transfer Test

Friday 31st October = Deadline for submitting secondary school applications.

Monday 2nd March = School Place Offers

Summer Term:

Monday-Thursday 11th-14th May 2026 = KS2 Assessments

End of KS2 Assessments

11th – 14th May 2025

Reading

Spelling, Punctuation and Grammar

Maths

Writing to be teacher assessed (externally moderated)

Science to be assessed through written work and
assessments

Information session will be held for parents early in
Spring term.

Home school communication

- See the class teacher on the door everyday
- Parent mail
- Email the office / phone call
- Y6 news and photos - website
- School weekly bulletin — parent mail
- Curriculum overviews, book warmers, PE days - website

Homework

- No formal homework until after transfer tests
- Homework includes a weekly maths or English task
- An optional activity from the homework grid can also be completed and is linked to other curriculum subjects per term
- Reading is expected to be done daily
- Spellings and times tables are expected to be practised regularly

Uniform

Uniform expectations

Blazers and ties to be worn to school everyday

School shoes should be worn everyday

Long hair and/or long fringes to be tied back

Studs for pierced ears. These must be taken out for PE or have tape to cover them up

No nail varnish or make up

Children in KS2 will be coming into school in their PE kits on PE days

Behaviour steps

Step 1

Reminder 1



Step 2

Reminder 2



Step 3

2 minutes off free time



Step 4

Free five minutes in a calm space to make a good choice



Step 5

Timer set and time paid back



Step 6

See Miss Billcliffe, Mrs Jones or Mrs Carter
Parents called



Behaviour

At Lace Hill Academy:

1. We are respectful communicators because we use the right

body language, tone of voice and words.

2. We care for our environment by looking after school property

and keeping everywhere tidy.

3. We are mindful movers because we walk around the school

calmly

4. We are ready to learn by listening, focussing and following

instructions.

Notices

- Lockers and belongings
- Pencil cases and stationery
- Mobile phones
- Walking home

Any questions?



LaceHill
Academy