

**CANADIAN-MADE
FREIGHT
ELEVATORS
BUILT TO PERFORM**

BUILT FOR **DURABILITY AND STRENGTH**

EXCEPTIONAL CANADIAN QUALITY

Atlantic Lifts Ltd. leads the way in **heavy-duty freight elevators**, delivering robust solutions for your most demanding operational needs. Proudly **engineered and manufactured in Canada**, our elevators provide unmatched **reliability, longevity, and performance**—purpose-built to withstand intense industrial use, day after day.

WHY CHOOSE ATLANTIC FREIGHT ELEVATORS?

BUILT TOUGH

Formed-section elevator cabs crafted from premium Canadian steel, guaranteeing superior strength and durability.

VERSATILE DESIGNS

Single Rail (SFE) and Double Rail (DFE) configurations handle a broad range of capacities, travel heights, and spatial requirements.

QUIET, SMOOTH OPERATION

Hydraulic systems with **submerged quiet screw pumps** for powerful yet unobtrusive performance.

EASY MAINTENANCE

Non-proprietary controls simplify servicing and troubleshooting, cutting downtime and saving money.

PRECISION CONTROL

Two-way landing and leveling technology ensures **fast, safe loading and unloading**—maximizing throughput.



OUR KEY DIFFERENTIATORS

2-YEAR WARRANTY

Industry-leading coverage that shows our commitment to quality and your peace of mind.

24/7 SUPPORT

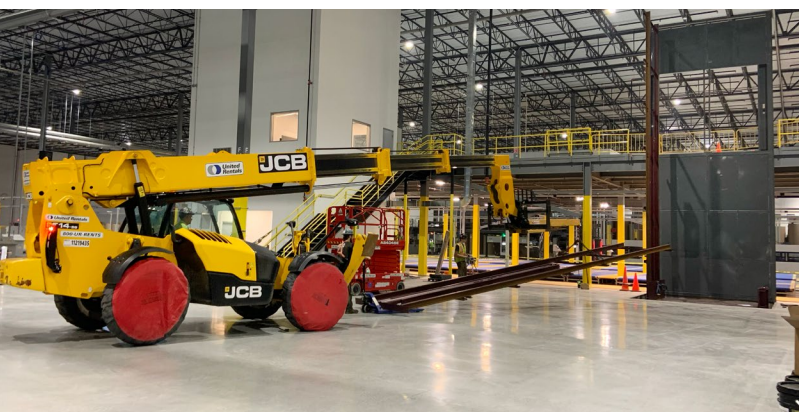
Get expert assistance any time, day or night, minimizing costly downtime.

IN-HOUSE MANUFACTURING

End-to-end control of design, fabrication, and assembly—ensuring **consistent quality** and faster turnaround.

FLEXIBLE HOISTWAY OPTIONS

For select non-fire-rated applications, we can **supply the hoistway**—speeding up installation and simplifying your project.



TRUSTED IN EVERY INDUSTRY

Atlantic Lifts freight elevators excel across a wide range of sectors, reliably moving products and materials wherever they need to go. Our solutions power critical operations in:

WAREHOUSING & DISTRIBUTION

Streamline inventory management and keep shipments moving on time.

DATA CENTRES

Protect critical equipment and maintain uptime—our dependable freight elevators handle servers, backup units, and other sensitive loads that must stay operational.

AUTOMOTIVE & DEALERSHIPS

Safely transport vehicles, parts, and service equipment between floors.

MANUFACTURING & HEAVY INDUSTRY

Efficiently move raw materials, finished goods, and machinery without bottlenecks.

RETAIL & COMMERCIAL FACILITIES

Improve backroom logistics, optimize storage, and enhance customer experience.

STORAGE & MATERIAL HANDLING

Maximize vertical space utilization while ensuring safe, ergonomic workflows.



COMMON FREIGHT ELEVATOR MODELS & APPLICATIONS

NEED SOMETHING CUSTOM?

At **Atlantic Lifts**, we specialize in **customized freight elevator solutions** that fit your unique requirements—without breaking the bank. Let us design an elevator that aligns precisely with your operation's goals.



READY TO ELEVATE YOUR BUSINESS?

Our expert team is on hand to discuss your **project requirements** and provide detailed specs, ensuring you get the **perfect** freight elevator for your application.

Looking for a Cost-Effective Solution?

Check out our Material Lift line—heavy-duty quality and reliable performance at an economical price, ideal for lighter-duty lifting needs.

1125 Burns St. E., Whitby, ON L1N 6A6

Tel: 905.666.2002 | www.atlanticlifts.com | sales@atlanticlifts.com

Quebec: qcsales@atlanticlifts.com | British Columbia: bcsales@atlanticlifts.com