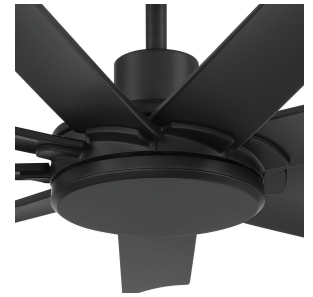


# WIND RIVER

## Ellison 60" Indoor/Outdoor LED Smart Ceiling Fan

Model: WR2260MB



Light Kit Cap  
Included



Included Handheld  
Remote Control



### SPECIFICATIONS

Motor Type	DC Motor	Control Type	Handheld Remote Control
Motor Size (mm)	172 x 25	Reverse Type	Remote Control
Motor Finish	Matte Black	Mounting Type	Downrod (6" Included)
Fan Speeds	6	Weight	26.18 lbs

### LIGHT KIT SPECIFICATIONS

Light Source	Integrated LED
Bulb Type	Dimmable LED
LED Temperature	30W — 3000K
Lens Material	Polycarbonate
Lens Finish	Frosted White / Clear
Lumens	2054

### BLADE SPECIFICATIONS

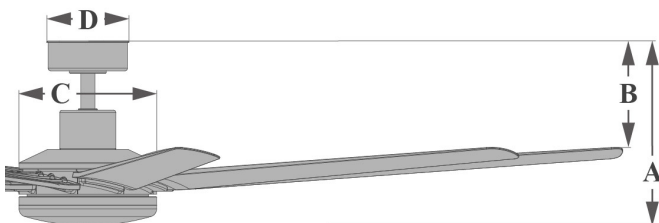
Blade Sweep (inches)	60"
Number of Blades	9
Blade Material	ABS
Blade Pitch	12°
Blade Finish	Matte Black

### SHIPPING SPECIFICATIONS

Gross Weight	30.27 lbs
Box Size	27.38" x 17.75" x 8.75"
Cubic Feet	2.40 cu ft

### WARRANTY AND SAFETY

Warranty	Limited Lifetime Warranty
ETL Certified	Wet Rated
Electrical Rating	120V, 60Hz



A: 15.1" B: 11.1" C: 10.2" D: 6.1"

Speed	Amps	Watts	RPM	CFM
Low	0.07	3.55	50	2305
Medium Low	0.11	5.57	68	3346
Medium	0.17	9.35	87	4310
Medium High	0.27	15.48	107	5257
High	0.40	24.64	125	6317
Extra High	0.56	35.07	144	7131

\*NOTE: These are approximate measures. They do not include amps and wattage used by the lighting kit.