

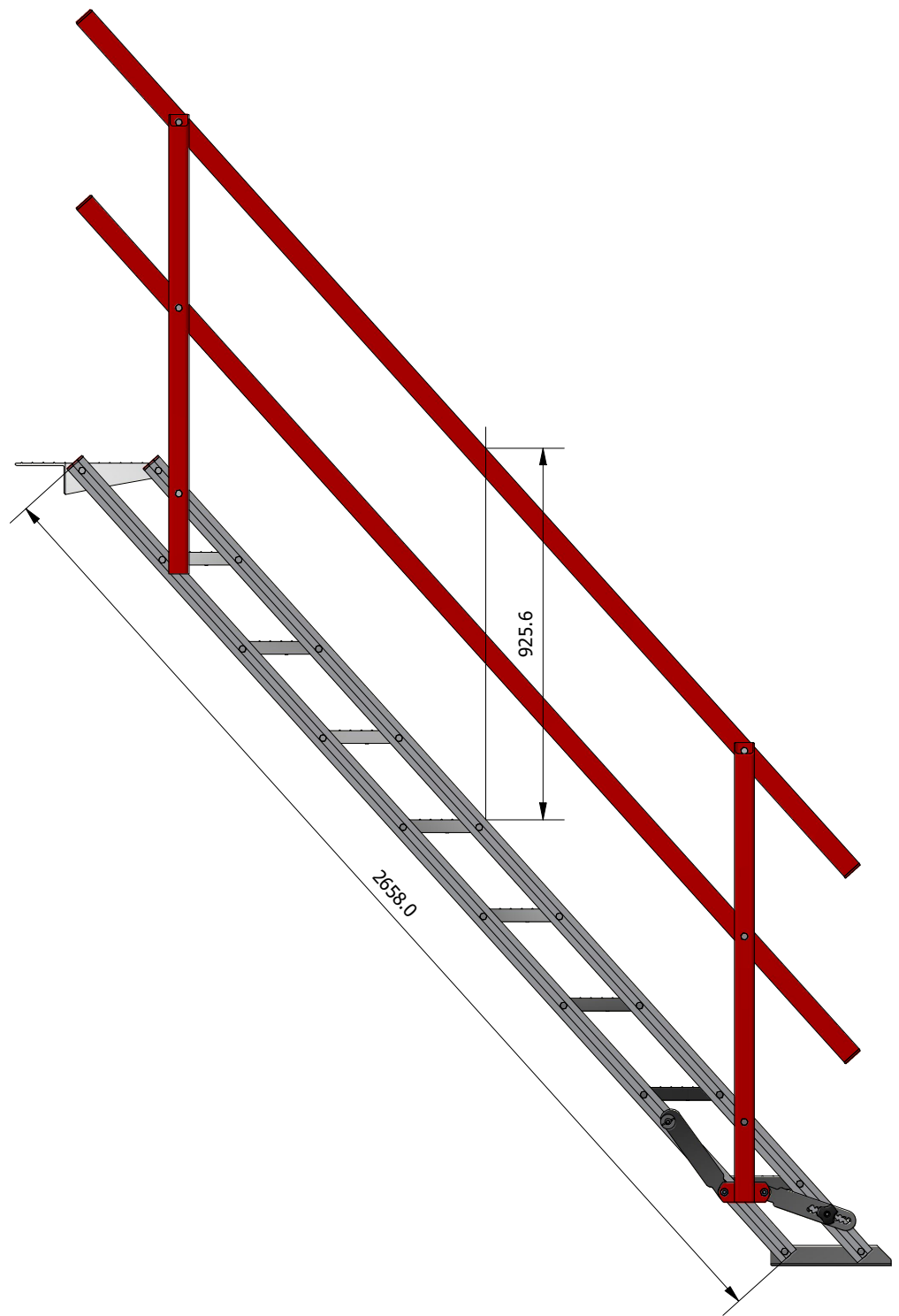
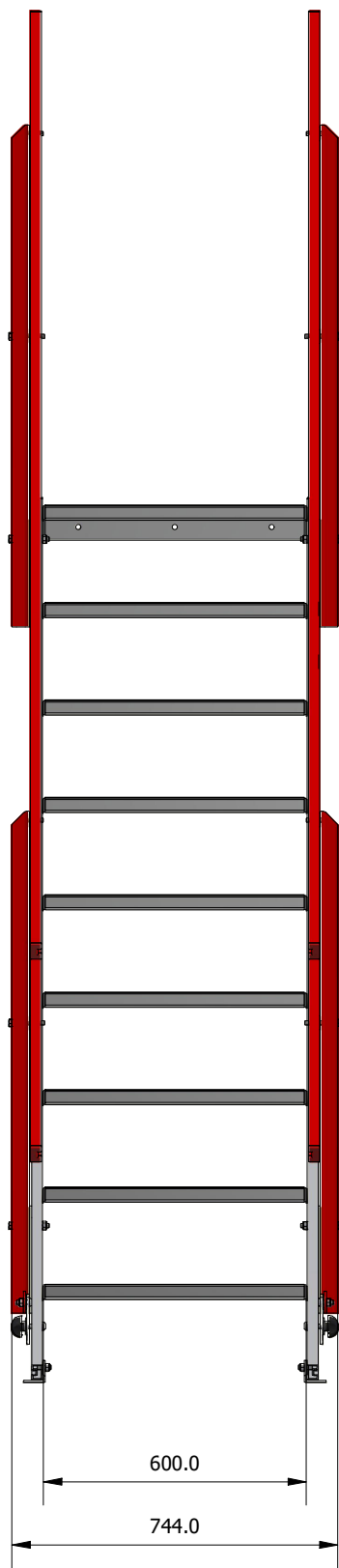
Large support foot with 10.5mm hole to take 1/4" fastener  
 Fasteners include:-  
 - Coach screws  
 - Tex (timber or steel)  
 - Sleeve anchors (concrete fixings)  
 - Bolts


Drawn by	Shane.S
Drawn for	Alf Dartnall
Approved by	
Drawing Type	Approval
Release Date	27.08.2024

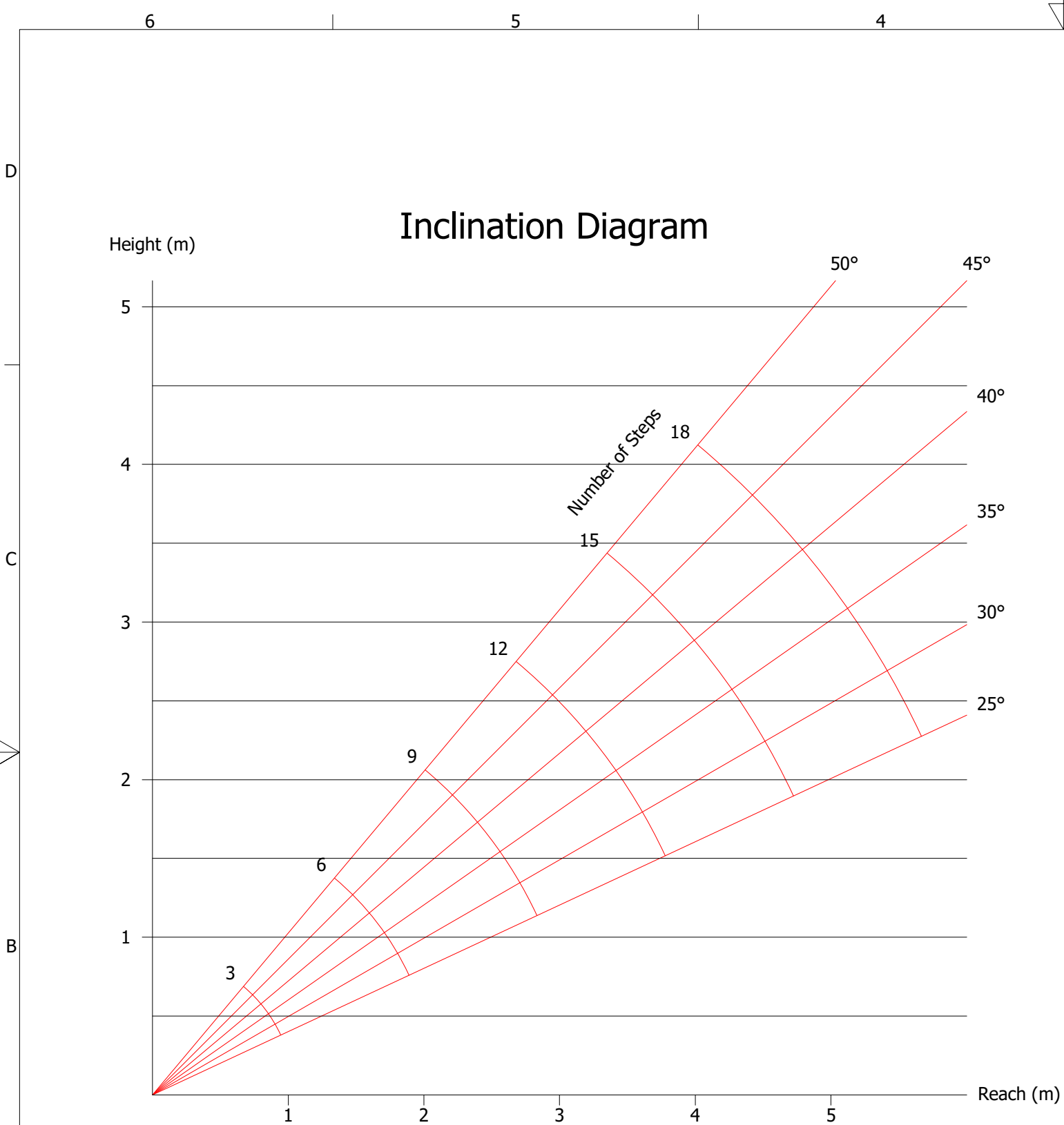

 65 Atkins Road, Ermington,  
 Sydney NSW 2115, Australia  
[www.safesmartaccess.com.au](http://www.safesmartaccess.com.au)

9 Step Safety Stair			
Revision	SWL	Unit Weight	Serial No.
A	2.5 Kpa	57.9 kg	
© COPYRIGHT		Edition	Sheet
		TF9SS	1 / 4

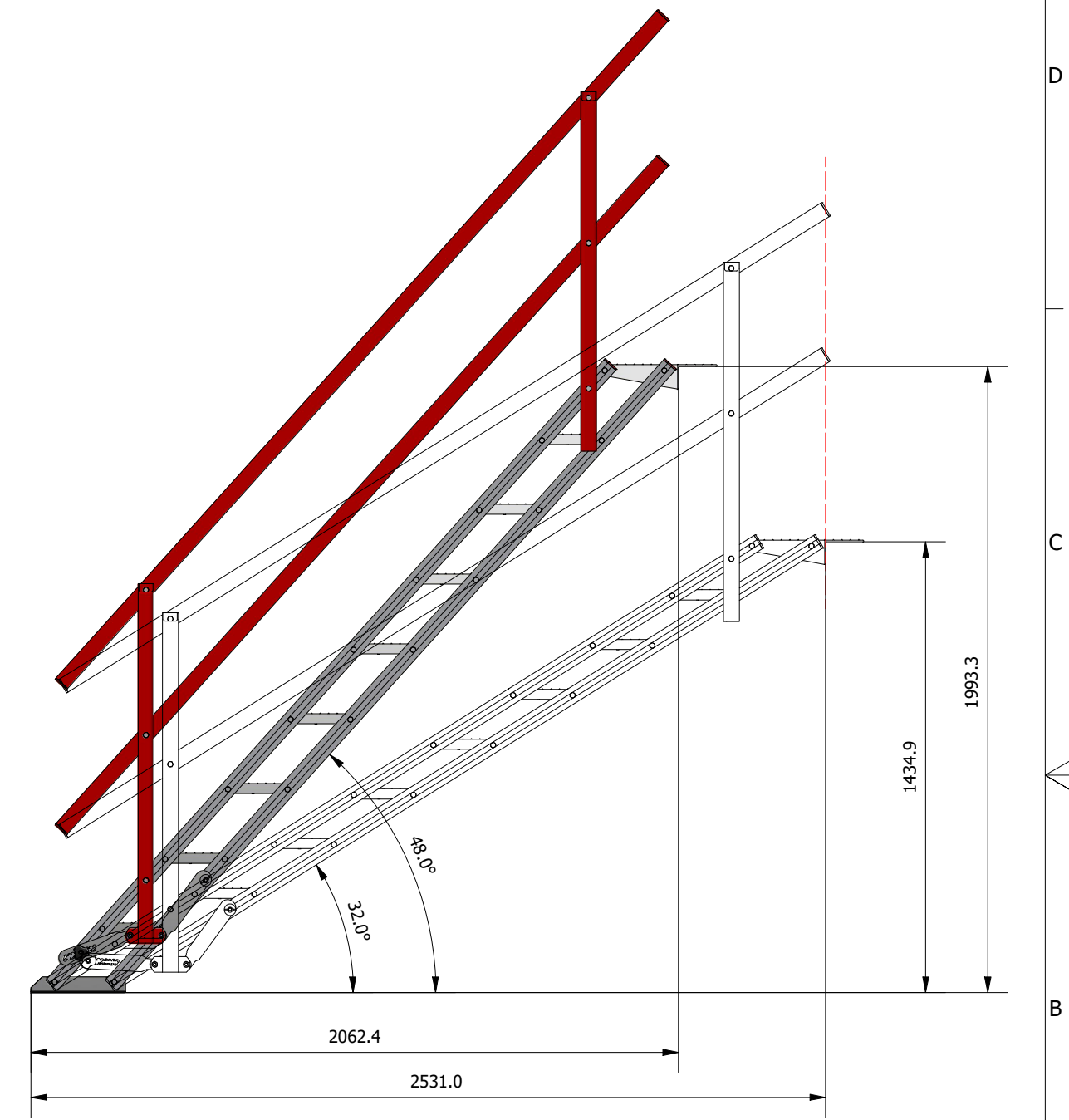
MANUFACTURED TO AS/NZS 1576.1:2010  
 ALUMINIUM WELDING TO NZ/AS1665  
 ALUMINIUM EXTRUSIONS AS/NZ1866  
 ALUMINIUM SHEET AS1734  
 All dimensions have a tolerance of ± 1%



Drawn by	Shane.S	 65 Atkins Road, Ermington, Sydney NSW 2115, Australia <a href="http://www.safesmartaccess.com.au">www.safesmartaccess.com.au</a>		
Drawn for	Alf Dartnall			
Approved by		9 Step Safety Stair		
Drawing Type	Approval			
Release Date	27.08.2024			
MANUFACTURED TO AS/NZS 1576.1:2010 ALUMINIUM WELDING TO NZ/AS1665 ALUMINIUM EXTRUSIONS AS/NZ1866 ALUMINIUM SHEET AS1734 All dimensions have a tolerance of $\pm 1\%$	Revision	SWL	Unit Weight	Serial No.
	A	<b>2.5 Kpa</b>	<b>57.9 kg</b>	
	© COPYRIGHT		Edition	TF9SS



NB- National Regulation may impose other requirements. Take these into consideration.



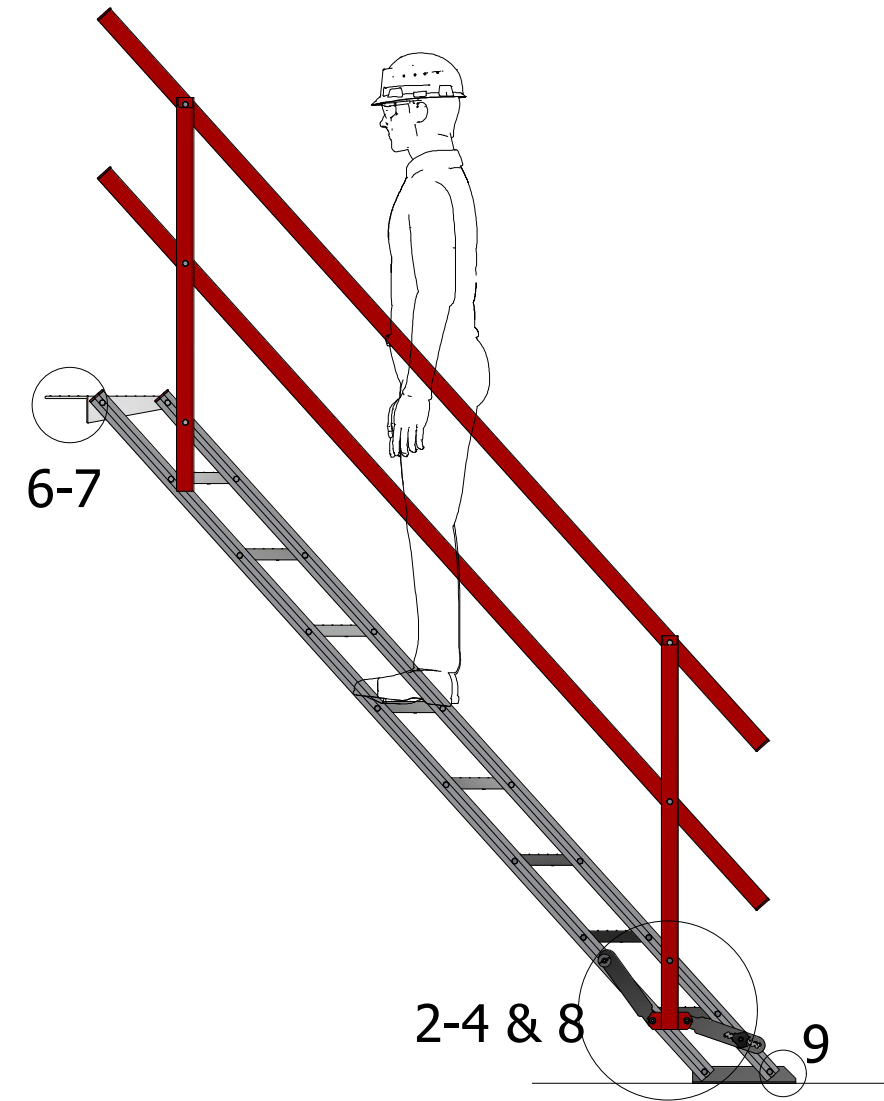
Drawn by	Shane.S	65 Atkins Road, Ermington, Sydney NSW 2115, Australia <a href="http://www.safesmartaccess.com.au">www.safesmartaccess.com.au</a>			
Drawn for	Alf Dartnall				
Approved by		9 Step Safety Stair			
Drawing Type	Approval				
Release Date	27.08.2024				
MANUFACTURED TO AS/NZS 1576.1:2010 ALUMINIUM WELDING TO NZ/AS1665 ALUMINIUM EXTRUSIONS AS/NZ1866 ALUMINIUM SHEET AS1734 All dimensions have a tolerance of ± 1%		Revision	SWL	Unit Weight	Serial No.
		A	2.5 Kpa	57.9 kg	
© COPYRIGHT		Edition	TF9SS	Sheet 3 / 4	


# Installation Instructions

1. Place the stair on the support surface with the top step facing the fixing location.
2. Open the stair treads by twisting steps, to minimum of 30deg.
3. Lift the Handrails until the Locator-tab can be slipped over the bolt, and tighten the wing-nut firmly.  
(Note\* This will not be possible with the stair closed - hence the need for step 2. above)
4. The above steps are to be completed on the handrails on both sides.
5. Tighten the lock-tab by hand only, to prevent the stair closing while being lifted.
6. Using two people each side of the stair, (Crane lifting lugs are fitted to larger stairs) raise the top step end of the stair and place it on to the fixing location.  
Adjust the angle of the steps to ensure they are level and the notch in the top step fits firmly onto the support position.
7. Fix the top step onto the support rail, floor or beam referring to the specification sheet for details on various fixing options.
8. Ensure the bolt is seated snug in one of the serrations in the lock-tab, by pushing it up or down, and tighten the lock-tab firmly by using a spanner or similar, inserted through the eye-nut.
9. Where possible fix the foot of the stair onto the lower support surface again referring to the specification sheet for fixing details.

Your stair is now ready for use.

**Note:** Ensure the nylon step mount bolts do not loosen with age. If this occurs tighten them, however, do not over-tighten as this will make the stair difficult to fold for transport and storage.



Drawn by	Shane.S	 65 Atkins Road, Ermington, Sydney NSW 2115, Australia <a href="http://www.safesmartaccess.com.au">www.safesmartaccess.com.au</a>			
Drawn for	Alf Dartnall				
Approved by		9 Step Safety Stair			
Drawing Type	Approval				
Release Date	27.08.2024				
MANUFACTURED TO AS/NZS 1576.1:2010 ALUMINIUM WELDING TO NZ/AS1665 ALUMINIUM EXTRUSIONS AS/NZ1866 ALUMINIUM SHEET AS1734 All dimensions have a tolerance of ± 1%		Revision	SWL	Unit Weight	Serial No.
		A	2.5 Kpa	57.9 kg	
© COPYRIGHT		Edition	TF9SS	Sheet	4 / 4