



☆ Summer Classic ☆

JUDGE ASHLEY DUDA

PAULINE WHITAKER ARENA



JULY 10-12 2026

1335 W KNAPP DR, FAYETTEVILLE,
AR, 72704

- FEATURING:
- \$250 18" HUNTER DERBY
- \$500 2' HUNTER DERBY
- \$500 2'6/2'9 HUNTER DERBY
- \$300 0.75M GAMBLERS CHOICE
- \$100 HIGH POINT OVERALL THOROUGHBRED



2026 NWAHJA SHOW SCHEDULE

July 10-12

Summer Classic

Pauline Whitaker Arena

September 5-6

September Showdown

NWA Stables

October 17-18

Harvest Run

Pauline Whitaker Arena

November 14-15

Season Finale

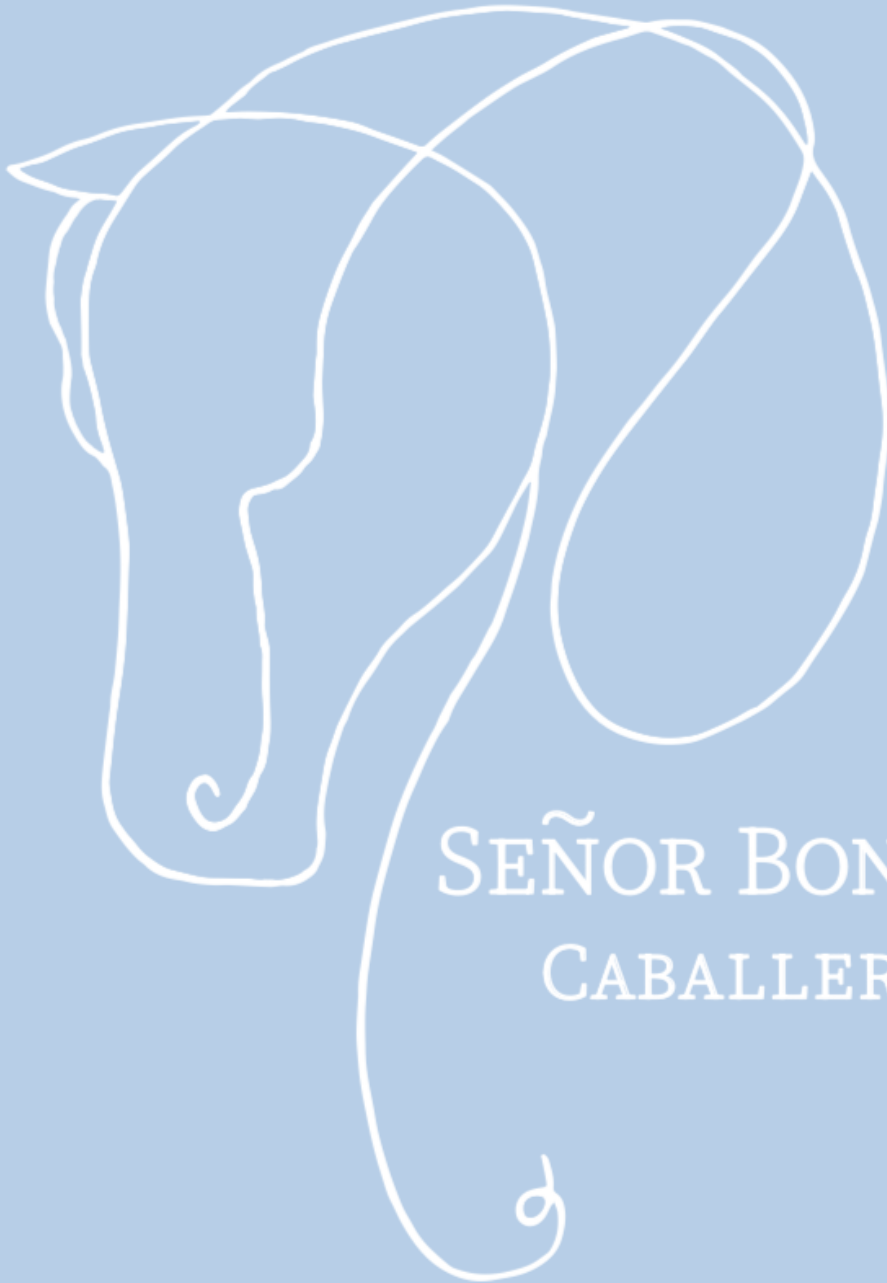
Pauline Whitaker Arena

Season Finale/Medal Finals

Thank you

SEÑOR BONANZA
CABALLERIZAS
OUR 2026

SHOW SEASON SPONSOR!




SEÑOR BONANZA
CABALLERIZAS

SBC IS ALSO PROUD TO SPONSOR THE LEADLINE DIVISION!

THE HARTLEY FAMILY

2026 BOARD OF DIRECTORS



RYAN LOWE, PRESIDENT

KATRINA BAXTER, VICE PRESIDENT

STACIE HOLLOWAY, TREASURER

TONI CLARK, SECRETARY

KAREN DAVIS

ZOE HOLZ

KENDALL JONES

JEWEL MCBRIDE

CHLOE VAN DER BYL

SONYA ZAWADA



JUNIOR BOARD:

EDIE ANZALONE

LEYLA BOELKINS

MICHAELA MUNSON

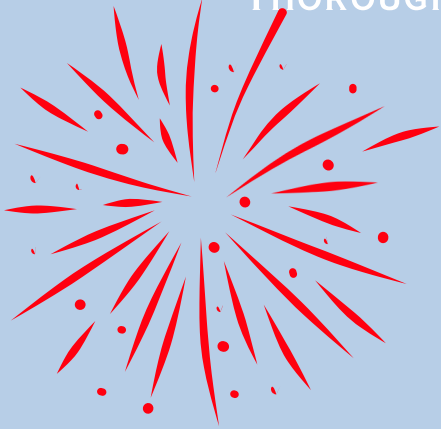
SARA GRACE HAGEL

SADIE HOLZ

AUBREY NUNNELEE

WANT TO JOIN? REACH OUT!

THIS SHOW IS RECOGNIZED BY THE NORTHWEST ARKANSAS HUNTER JUMPER
ASSOCIATION AND USHJA OUTREACH, AND OFFERS THE JOCKEY CLUB
THOROUGHBRED INCENTIVE PROGRAM AWARDS.



OFFICIALS:

JUDGE: ASHLEY DUDA

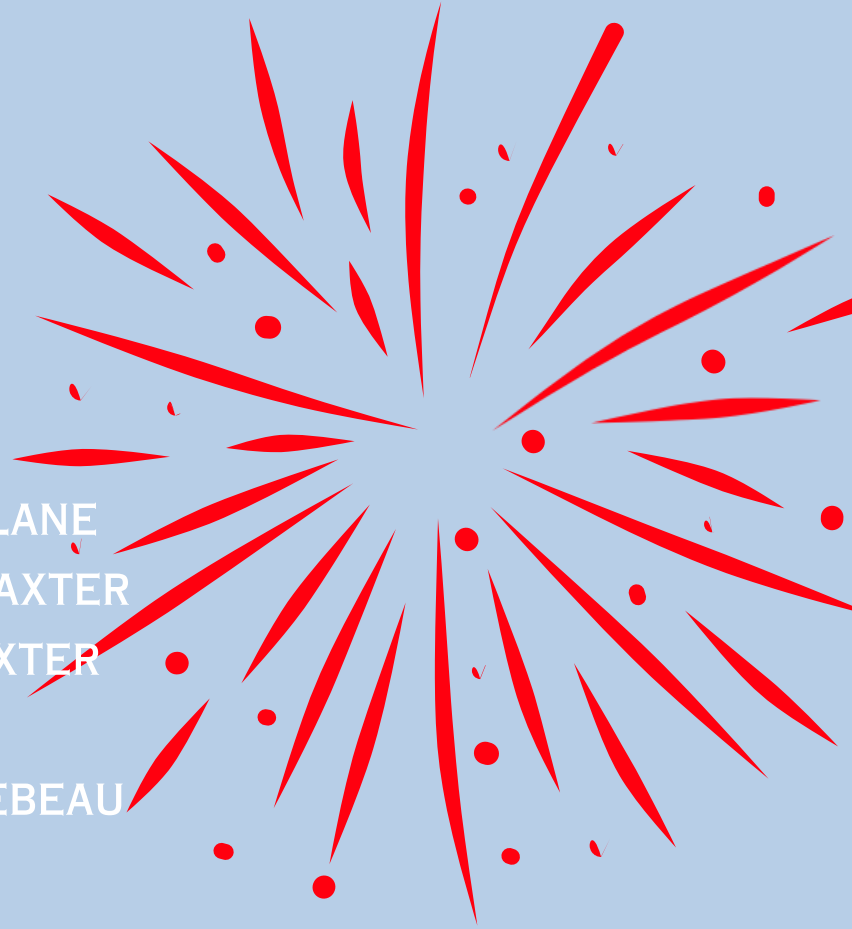
Paddock MASTER: WILLOW LANE

COURSE DESIGNER: KATRINA BAXTER

SHOW STEWARD: KATRINA BAXTER

EMT: BRIAN COPELAND

SHOW SECRETARY: SHELBY LEBEAU



THE NWAHJA CLUB, ITS OFFICERS, BOARD MEMBERS, AND GENERAL MEMBERSHIP WILL NOT BE HELD RESPONSIBLE FOR DAMAGES OR INJURIES TO ANY PERSON, ANIMAL, OR OTHER PROPERTY OCCURRING AT THE HORSE SHOW/CLINIC OR ON THE SHOW GROUNDS. ADDITIONALLY, NWAHJA, ITS OFFICERS, BOARD MEMBERS, AND GENERAL MEMBERSHIP SHALL BE INDEMNIFIED AND HELD HARMLESS FROM ANY AND ALL CLAIMS AND DEMANDS OF ANY KIND ARISING FROM ANY EXHIBITOR OR SPECTATOR AND HIS FAMILY, EMPLOYEES, ANIMALS, OR PROPERTY WHILE ON OR IN THE NWAHJA SHOW GROUNDS. WARNING: IN ACCORDANCE WITH ARKANSAS LAW, AN EQUINE ACTIVITY SPONSOR IS NOT LIABLE FOR AN INJURY TO, OR DEATH OF A PARTICIPANT IN EQUINE ACTIVITIES RESULTING FROM THE INHERENT RISK OF EQUINE ACTIVITIES, ACT 3563 OF 1995.

Rules and Guidelines

***** These rules are abbreviated from the NWAHJA Rule book. Please review the Rule Book <https://nwahja.org/rulebook/> to acquaint yourself with class descriptions, conditions of entry, and a complete list of rules.*****

- 1. Proper show attire is required. ASTM/SEI protective headgear is required when mounted.**
 - 2. One-year negative Coggins is REQUIRED for all horses on show grounds and will be checked.**
 - 3. Please wear your number at all times while mounted.**
 - 4. Absolutely NO lunging at ANY time in the show arena.**
 - 5. Any horse or pony known to kick must wear a red ribbon on its tail as a warning.**
- All classes will be pinned through 8th place. Ribbons will be awarded to the Champion and Reserve Champion. Year-end awards will also be awarded 1st through 8th place.**
- 6. Only horses receiving points over fences are to receive under-saddle points toward determining the champion and reserve champion of each division.**
 - 7. In the case of a tie for division champion, the champion will be decided by the most points over fences. If still tied, the entry with the most points in the first over-fences class will be declared champion.**
 - 8. A horse/pony may not be ridden in more than 7 individual classes per show day, and 11 total classes per show.**
 - 9. A horse/rider combination may only cross-enter divisions with fence heights less than or equal to a six (6) inch height difference. This includes flat/under saddle classes. Jumper classes included.**
 - 10. An the event that a division does not fill (3 entries for hunter, equitation, and jumper divisions, and 2 riders for medal classes) and cannot be combined with another division, the division will run with half points being awarded. Classes will not be canceled due to lack of entries.**
 - 11. Course designers and show managers will set show fences on an 11 ½ foot stride up to 2'3". Courses with jumps 2'6" and above will be set on the 12' stride. Course designer and show management will set courses based on USEF recommendations. Course designer, judge, and show steward may make adjustments as deemed necessary. An in and out (1 stride = 24' 2 stride 36') may be offered at fence heights of 2'9" and higher in the Hunter, Equitation, and Medal divisions. In and outs are allowed at any height in Jumper divisions, and will follow Rule 9300 for striding. All shows should have the footage for the lines on the posted courses.**

13. Ponies will NOT be penalized for adding a stride as appropriate for their size.
14. The One Minute Rule will be enforced at all times. A rider will have one (1) minute to enter the arena when called by the paddock master or be disqualified from that class.
15. The NWAHJA Show Steward is on duty for show safety, management, schooling, and questions. Do not approach the judge during the show.
16. A formal request from a rider or trainer to view the judge's card can be made to the Show Steward. If the judge agrees, the rider and trainer must wait until after the last class of the day to speak with the judge.
17. Help or encouragement from the ringside by adult guardians or instructor/trainer during a judged class is prohibited and is cause for elimination. Jumper classes excluded.
18. Horses owned by a registered NWAHJA member may receive a year-end award in a Hunter or Jumper division once the horse has competed in and received points in that division in a minimum of 2 NWAHJA sanctioned shows during the year, AND the owner OR rider has completed at least 4 volunteer hours.
19. A rider may receive a year-end award in an Equitation division if the rider has competed in and received points in that division at a minimum of 2 NWAHJA-sanctioned shows during the year, and the rider has completed at least 4 volunteer hours. Year-end awards for Medal classes will be awarded to the winner of the Final only.
20. A rider will not be disqualified for the purposes of #18/19 if, by virtue of when the rider becomes a member of NWAHJA, the rider competes in and receives points in all shows at which the rider was eligible to accumulate points during the show year.
21. Please return your number to the secretary at the end of the show.
22. A horse may also be excused from the arena due to welfare concerns (lameness, exhaustion, safety concerns, etc.) per the judges discretion. The judge must make this request to the show steward, who will notify the rider that they are excused from competition either for the rest of the show day or if they may return for a later class.
23. If an entry is not checked out by the end of the show (30 minutes following the final trip) , a \$50 late checkout fee will be assessed.
24. All competing riders are required to be a member of NWAHJA prior to competing in any class. Membership will be verified prior to numbers being given out at the secretary's desk.(Individual, Family, or Barn membership is valid.). Having your membership dues paid in full is the responsibility of the rider, not the trainer.

ENTRY INFORMATION

Entry fees:

Hunter and Equitation classes: \$20 / class

Medal and Jumper Classes: \$25 / class

Special Classes: \$40 / class

Warm Up: \$15 / class

Un-Judged Exhibition Rounds: \$15

***There are no WarmUp rounds for Introductory Hunter or Stepping Stones**

Please submit entries by 5pm on July 3rd.

**Entries are accepted via
Horseshowsonline**

Show Fees

**\$50 Admin Fee per Horse/Rider Combination,
charged once per show (not per day)**

Grounds Fee:

\$25/non-competing horse

**A \$50 fee will be added for leaving the
show without checking out with the secretary.**

**Everyone must check out within 30 minutes of the
last horse leaving the ring at the end of the show.**

Summer Shopping Spree!



Tack trailer will be on site for the weekend for all of your shopping needs!



MarShae's

SWEET ESCAPE

Friday 3:30-6:30



Stalls

Limited availability

Submit stall reservations and shavings orders by
July 3rd

Contact Ryan Lowe (479)445-7750

Indoor \$80/weekend

Corral Panel (covered) \$60/weekend

Corral Panel (uncovered) \$15/day

Shavings \$8/bag

Schooling

FRIDAY

11:45am Jumper Schooling

SATURDAY

6:45am Open Schooling

SUNDAY

6:45am Open Schooling

7:45am Crossrail Schooling

***CHECK CLASS SCHEDULE FOR DIVISION
SCHOOLING THROUGHOUT THE DAYS**

The Show Steward will direct any schooling to be done. The number of riders permitted will be limited to what the steward feels is appropriate.

NOT ALL jumps will be open for schooling during breaks. The steward will designate what jumps are open, and jumping a jump that is closed will be cause for immediate dismissal from the schooling ring.

Horses/ponies are ONLY permitted to be in the schooling ring for the schooling break designated for classes they are entered in.

Equitation CHALLENGE



Open to all juniors and amateurs competing in any equitation division at this show. Must be a NWAHJA member. This class comprises four phases, all to be judged on horsemanship skills.

Each phase will receive a numerical score and all phase scores are totaled for the final overall score. Ribbons are awarded from 1st-8th in each phase and 1st-6th for the combined total scores.

Practicum and Written Exam will be different for riders 11 and under, and 12 and up

\$30 Entry Fee

The four sections are:

Over Fences Phase

Points from rider's equitation division over fences class.

Flat Phase

Points from rider's equitation division flat class

Written Phase

A multiple-choice exam testing knowledge of basic horsemanship skills.

Practicum Phase

Horse and rider shall be presented to the Examiner tacked to enter the show ring, or any other way as specified by the examiner. A one on-one interview and review of skills involving horsemanship and general equine knowledge will be demonstrated.

TURNOUT AWARD

Three prizes, one each to be awarded Friday, Saturday, and Sunday to the best turned out horse/rider pair at the judge's discretion.

Braid those manes and polish those boots!





HUNTER DERBY

Open to Jr/Am only. Hunter Derby courses are designed to more closely resemble the hunt field, with fewer ground lines, taller, narrower fences, hedges and more. The approaches to jumps vary and are completely negotiable. Riders are rewarded for choosing more difficult routes which can even include optional jump heights. A two round format will be used, with top entries returning for the Handy Round. The first round will be a Classic style course with approximately 10 obstacles including 3 high option jumps. First round scores will be based on each entry's numerical score plus one bonus point for each high option jump. The second round will be run as a Handy Hunter course of a set of approximately 6 obstacles with 2 option jumps and choices such as clever jump approaches, hand galloping a jump, trot jump, halt, unrelated distances. Second round scores will be based on each entry's numerical score plus 1 bonus point for each option jump completed, plus possible 0-10 points for overall handiness. Scores from the two rounds will be combined. No schooling of the Derby course will be allowed.



**\$40 ENTRY FEE | PAYOUTS 1ST-6TH PLACE
FRIDAY 3:30 START TIME**



\$250 Plum Point Farm 18" Hunter Derby

Fences 18" with 2' High Options


\$500 Deer Creek Farm 2' Hunter Derby

Fences 2' with 2'3" High Options

\$500 Buchanan Street Family Dentistry

2'6 / 2'9" Hunter Derby

Fences 2'6" with 2'9" High Options
or 2'9" with 3' High Options





HIGH POINT THOROUGHBRED AWARD

• ONE HORSE. TWO DISCIPLINES. ENDLESS POSSIBILITIES. •



AWARD AMOUNT

\$100

AWARDED TO THE
OVERALL HIGHEST SCORING
THOROUGHBRED
ACROSS ALL HUNTER DERBIES.

\$300

GAMBLER'S CHOICE

0.75M JUMPER

ENTRY FEE: **\$40/RIDER**
RIBBONS 1-6TH PLACE.
PRIZE MONEY DISTRIBUTION:
1ST: **\$150** 2ND: **\$100** 3RD: **\$50**



DESIGN YOUR OWN PATH:

Riders have total freedom to map out their route, tackling jumps in any order and from either direction. **IN 60 SECONDS OR LESS.**



POINT VALUES:

Jumps require varying degrees of difficulty, so larger, or more challenging placed fences reward higher points.



THE TWO-JUMP LIMIT:

Each fence can be jumped a maximum of two times, and if jumped twice, they must be in opposite directions.



KNOCKDOWNS:

If a rail is dropped, the jump is **out of play** and cannot be attempted again. Knocking down a rail will also result in **zero points** for that specific obstacle.



REFUSALS:

Unlike standard jumper classes, refusals do not directly deduct points, but simply waste valuable time on the clock. **THE 2-REFUSAL RULE WILL STILL BE IN PLACE.**



THE JOKER FENCE:

At the end of the standard time, a buzzer or whistle sounds to signal the end of the time limit. Riders are then given the option to take one final, high-risk, high-reward obstacle known as the Joker.



CLEARING THE JOKER:

Clearing the Joker awards a **massive point bonus.**



KNOCKING A RAIL ON THE JOKER:

Knocking a rail on the Joker deducts that same large amount from the rider's accumulated score, making or breaking the win.

★ ★ SPONSORED BY ★ ★

NWA STABLES

2026 SCHOLARSHIP OPPORTUNITIES

MY RIDE SCHOLARSHIP

THE MY RIDE SCHOLARSHIP RECIPIENT HAS THE BENEFIT OF HAVING THEIR NWAHJA EQUITATION CLASS FEES, INCLUDING MEDAL CLASSES, FOR THE FOLLOWING SEASON SPONSORED BY NWAHJA

2026 APPLICATION REQUIREMENTS

- IS A NWAHJA MEMBER IN GOOD STANDING
- EXHIBITS GOOD SPORTSMANSHIP IN ALL CIRCUMSTANCES
- RIDES IN ANY EQUITATION DIVISION 2'3 AND BELOW, AT A MINIMUM OF 3 SHOWS
- MINIMUM 10 VOLUNTEER HOURS AT NWAHJA EVENTS
- VIDEO ESSAY • LETTER OF RECOMMENDATION

NWAHJA EDUCATION

THE NWAHJA EDUCATION SCHOLARSHIP IS FOR CONTINUING EDUCATION AT ANY ACCREDITED COLLEGE OR UNIVERSITY

2026 APPLICATION REQUIREMENTS

- IS A NWAHJA MEMBER IN GOOD STANDING
- THE APPLICANT MUST BE IN 9TH, 10TH, 11TH OR 12TH GRADE, OR ENROLLED IN ANY ACCREDITED COLLEGE OR UNIVERSITY
- RIDES IN ANY DIVISION DURING THE 2026 SHOW SEASON
 - PROOF OF 2.5 OR HIGHER GPA
- MINIMUM 20 VOLUNTEER HOURS AT NWAHJA EVENTS, AND 10 HOURS OUTSIDE OF NWAHJA
 - ESSAY • TWO LETTERS OF RECOMMENDATION
- TOP 3 APPLICANTS WILL BE INTERVIEWED BY THE BOARD



VOLUNTEERING

As a non-profit organization, NWAHJA relies on the volunteer efforts of our members and board. The dedication of our membership to service helps us accomplish our goals, as well as developing our riders into well rounded, generous, and thoughtful members of society.

FOUR VOLUNTEER HOURS

are required to be completed at NWAHJA sponsored events by all riders during the show season to be eligible for year end awards. In the event a member is unable to fulfill their requirement, \$50 may be paid to NWAHJA for every unmet hour. A Volunteer of the Year award will be given to the member with the most volunteer hours at the end of the year. Scholarships require more volunteer hours. For more information, visit our website www.nwahja.org

Volunteer awards!

Challenge yourself in the race for Volunteer of the Year and earn new and exciting awards

Bronze Level

15-24 hours

Silver Level

25-34 hours

Gold Level

35+ hours



NWAHJA IS AFFILIATED WITH THE UNITED STATES HUNTER JUMPER ASSOCIATION OUTREACH PROGRAM.

RIDERS AND OWNERS OF USHJA OUTREACH REGISTERED HORSES CAN EARN LEVEL STATUS AND POINTS TO REDEEM AT THE END OF THE YEAR FOR ITEMS SUCH AS USHJA LOGO WEAR, OUTREACH RIBBONS, OR OUTREACH MEDALLIONS.

BRONZE LEVEL

RIDERS OR HORSES MUST EARN AT LEAST 50-74.5 POINTS

SILVER LEVEL

RIDERS OR HORSES MUST EARN AT LEAST 75-99.5 POINTS

GOLD LEVEL

RIDERS OR HORSES MUST EARN AT LEAST 100-199.5 POINTS

PLATINUM LEVEL

200 + POINTS

TRAINERS

EARN THE USHJA OUTREACH HIGH POINT TRAINER AWARD BY BEING THE LEADING TRAINER IN YOUR ZONE!

FOR MORE INFORMATION, AND TO REGISTER YOUR FREE USHJA OUTREACH MEMBERSHIP VISIT:

[HTTPS://WWW.USHJA.ORG/COMPETITION/OUTREACH](https://www.ushja.org/competition/outreach)

Gold Level Sponsor



*Stall and Pasture Board
Training and Lessons
Showing*

Indoor & Outdoor Arenas

Located in Bentonville
14637 Daniels Rd
Bentonville, AR 72712

Toni Clark : Owner/Operator
info@nwastables.com
www.nwastables.com
972-467-5839

Gold Level Sponsor



BUCHANAN STREET
Family Dentistry

Jack Pardo, DDS

Giving you a Blue Ribbon Smile



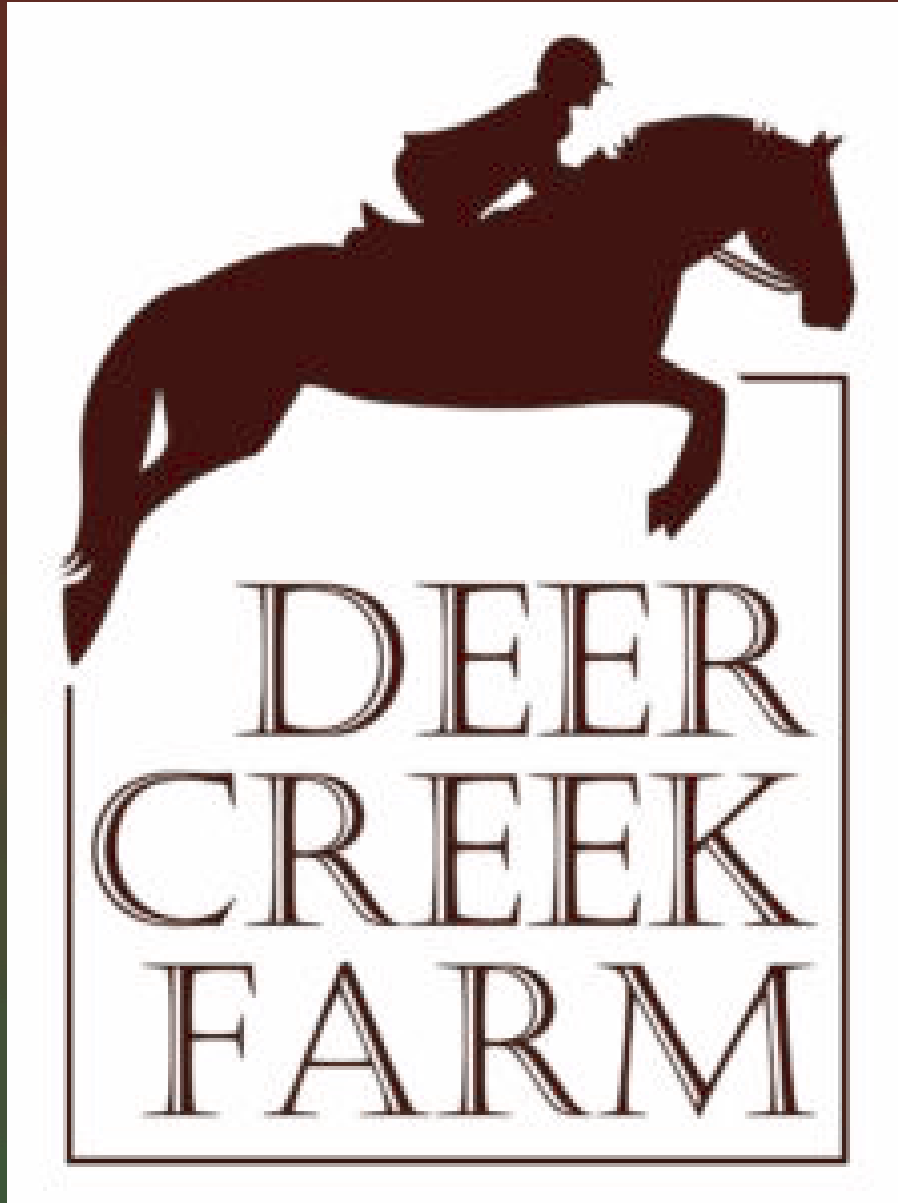
Located in
Prairie Grove
401 E. Buchanan St
Prairie Grove, AR
72753

(479) 846-1005

- Patients with Special Needs Always Welcome
- Family Oriented
- Comfortable Atmosphere

<https://buchananstreetdentistry.com/>

Gold Level Sponsor



Diane Gooderl
Sally Lobb

deercreekfarm@hughes.net
www.deercreekfarm.info

(479) 530-5959

Hunters, Jumpers, Equitation,
Foxhunting

Gold Level Sponsor



VDB

EQUINE

Head trainer Chloe Van Der Byl
Hunter, Jumper, and Equitation
trainer from local to rated shows

Gold Level Sponsor



UNBRIDLED EQUINE
AT PINNACLE REHAB CENTER

Rehabilitation
Performance
Wellness

**We Turn Obstacles
Into Opportunities**

Tailored Care
Advanced Equipment
Backed by Experience



Gold Level Sponsor



OZARK LIVESTOCK & EQUINE
VETERINARY SERVICE

MATTHEW FINNEY, DVM
479-332-8656

Gold Level Sponsor
Proud Supporters of



Northwest Arkansas
Hunter Jumper Association

Mick and Jennifer Spaulding

In honor of the horses who make it all possible



Dr. Tember McNeill
Boston Mountains
Peak Performance Chiropractic

Board Certified Chiropractor

Acupuncturist

Mobile: 479-440-7040

18" Derby Sponsor



PLUM POINT

FARM
LLC

Silver Level Sponsor

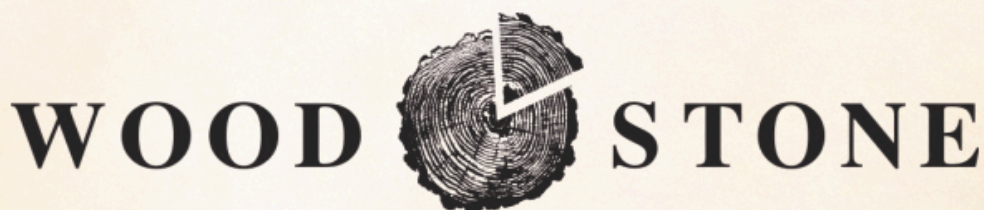


Ashley Jones, ESMT

*Equine Sports Massage Therapy
Kinesiology Taping
Red Light Therapy*

*Saddle Fit Consulting
Saddle Consignment*

DIVISION SPONSOR



CRAFT PIZZA + BAR

WWW.WOODSTONECRAFTPIZZA.COM



EQUINE SPORTS THERAPY

SAMANTHA BART
EQUINE SPORTS MASSAGE
ELECTRO ACUPRESSURE
LASER THERAPY
417 699 0995



DEER CREEK FARM LADIES LESSON

*Horse Girls:
May we be them, May we know them, May we raise them.*

JUMPER TABLE DESCRIPTIONS

CLEAR ROUND (TABLE II) -THE FIRST ROUND IS DECIDED BY ADDING TOGETHER THE FAULTS INCURRED OVER THE COURSE AND ANY PENALTIES FOR EXCEEDING THE TIME ALLOWED. HORSES WITH CLEAR ROUNDS OR EQUAL FAULTS REMAIN EQUAL.

TIME FIRST ROUND (TABLE II, SEC. 1)—THE FIRST ROUND IS DECIDED BY ADDING TOGETHER THE FAULTS INCURRED OVER THE COURSE AND ANY PENALTIES FOR EXCEEDING THE TIME ALLOWED. HORSES WITH CLEAR ROUNDS OR EQUAL FAULTS ARE CLASSIFIED ACCORDING TO THEIR TIME TAKEN TO COMPLETE THE COURSE. (NOTE: IT IS RECOMMENDED THAT TABLE II SEC. 1 BE CONDUCTED OVER A TABLE II COURSE RATHER THAN A TABLE III COURSE.)

TIME FIRST ROUND (TABLE II, SEC. 1)—THE FIRST ROUND IS DECIDED BY ADDING TOGETHER THE FAULTS INCURRED OVER THE COURSE AND ANY PENALTIES FOR EXCEEDING THE TIME ALLOWED. HORSES WITH CLEAR ROUNDS OR EQUAL FAULTS ARE CLASSIFIED ACCORDING TO THEIR TIME TAKEN TO COMPLETE THE COURSE. (NOTE: IT IS RECOMMENDED THAT TABLE II SEC. 1 BE CONDUCTED OVER A TABLE II COURSE RATHER THAN A TABLE III COURSE.)

TIME FIRST JUMP-OFF TABLE II, SEC. 2 (B)—THE FIRST ROUND AND FIRST JUMP-OFF, IF ANY, ARE DECIDED BY ADDING TOGETHER THE FAULTS INCURRED OVER THE COURSE AND ANY PENALTIES FOR EXCEEDING THE TIME ALLOWED. IF A COMPETITOR HAS GONE CLEAR IN THE FIRST ROUND, THE COMPETITOR WILL, WITHOUT LEAVING THE RING, UPON AN AUDIBLE SIGNAL, COMMENCE THE DESIGNATED JUMP-OFF COURSE. A COMPETITOR WITH A CLEAR ROUND MAY DISMOUNT, AND WITH ASSISTANCE IF NECESSARY, ADJUST TACK AND/OR EQUIPMENT; HOWEVER, UPON THE AUDIBLE SIGNAL TO BEGIN HIS/HER ROUND, THE COMPETITOR IS RESPONSIBLE TO ADHERING TO THE 45 SECONDS RULE AS PER JP137.3. IN CASE OF A FALL OF A RIDER AND/OR HORSE AFTER CROSSING THE FINISH LINE OF THE FIRST ROUND, THE RIDER/HORSE COMBINATION MAY NOT CONTINUE TO THE JUMP-OFF, AND WILL BE PLACED ACCORDING TO THEIR SCORE IN THE FIRST ROUND. A COMPETITOR WHO LEAVES THE ARENA AFTER A CLEAR ROUND (BEFORE OR AFTER THE TONE) WILL BE CONSIDERED TO HAVE WITHDRAWN FROM THE JUMP-OFF (EXCEPTION JP138.1). IF THERE ARE NO CLEAR ROUNDS AND A TIE EXISTS FOR FIRST PLACE, THE RESULTS WILL BE DETERMINED BY THE SCORES AND TIME FROM THAT ROUND. IT IS RECOMMENDED THAT NO MORE THAN TWELVE NUMBERED OBSTACLES BE INCLUDED IN THE FIRST ROUND WHEN THE CLASS IS SCORED UNDER THIS TABLE.

USEF OPTIMUM TIME JUMPER TABLES: CLASSES ARE SCORED ON FAULTS UNDER TABLE II, HOWEVER, ALL TIES ARE BROKEN ON THE BASIS OF OPTIMUM TIME.

1. OPTIMUM TIME IN FIRST ROUND (TABLE IV SEC. 1)—

THE FIRST ROUND IS DECIDED BY ADDING TOGETHER THE FAULTS INCURRED OVER THE COURSE AND ANY PENALTIES FOR EXCEEDING THE TIME ALLOWED. IN THE CASE OF EQUALITY OF FAULTS, TIES WILL BE BROKEN ON THE FOLLOWING BASIS: AN “OPTIMUM TIME” (DEFINED AS 4 SECONDS LESS THAN THE TIME ALLOWED FOR THE COURSE) WILL BE POSTED ON THE COURSE PLAN; THE HORSE WITH THE TIME ON COURSE CLOSEST TO THIS OPTIMUM TIME (OVER OR UNDER) WILL PREVAIL IN THE TIE, NEXT CLOSEST NEXT, ETC.

Saturday Hunters/Equitation/Medals

Low Open Hunter

Can be ridden at any height 18" to 2'3" on Saturday. Rounds will be ridden throughout the day as course heights are changed for other divisions. Under Saddle class will run all together after the 18" Schooling Break. Walk trot and canter to be shown in the under saddle. Open to all. USHJA Outreach Hunters 18" / 2' / 2'3"

Low Adult Hunter

2' OR 2'3 verticals, NO oxers or fill except for flowers. Rider choice of height, judged together. Riders may move up and down in height throughout the season without penalty. Riders will be asked to show at the walk, trot, and canter in the flat class. Riders Must be 18 or older, Amateurs only. USHJA Outreach Hunters 2' OR 2'3.

Low Adult Medal

2' OR 2'3 verticals, NO oxers or fill except for flowers. Rider choice of height, judged together. Additional testing of Top 2, and up to Top 6, after first round required. USEF Tests 1-8 may be used. Riders Must be 18 or older, Amateurs only.

Short / Long Stirrup Hunter / Equitation

Short Stirrup = riders aged 11 and under, Long Stirrup = riders aged 12 and up. The courses are simple with seven (7) or eight (8) small 18" verticals. Entrants are encouraged to canter the courses. On the flat the riders will be asked to show at the walk, trot, and canter in both directions. Simple changes not to be penalized. Jr/Am only. USHJA Outreach Hunters 18" or crossrails / Equitation 18" or crossrails

Note: The following Stepping Stone and Introductory divisions are designed specifically for our entry-level, beginner riders who are just starting their show ring career. These divisions are not intended for green or inexperienced horses being brought along by more accomplished riders. In general, please be mindful when selecting divisions to ensure a fair, supportive, and safe environment for our newest riders. Thank you for helping us maintain the spirit and integrity of these classes! No Warm-Ups.

Stepping Stone Hunter / Equitation Crossrails

This division is for entry-level riders only. The purpose of this class is to provide a bridge between the Introductory poles division and showing over a course of fences. Riders may not enter any other classes at that show, except 101 Saturday Poles/Crossrail Warm Up. The course for this division will be of four (4) 12" crossrails set on the outside lines. The rider will jump once around only. The rider may trot the entire course or trot to the line and canter away. Riders may not canter into any first fence of a line. On the flat, the riders will be asked to show at the walk and trot in both directions. No cross-entry into any other division is allowed by that rider at the same show. Jr/Am only.

Introductory Hunter / Equitation Poles

This division is for entry-level riders only. The purpose of this class is to provide an initial showing experience for individuals. Riders may not enter any other classes at the show. The course for this division will be of four (4) poles on the ground. The rider will jump once around only. The rider may trot the entire course or trot to the line and canter away. Riders may not canter into any first fence of a line. On the flat, the riders will be asked to show at the walk and trot in both directions. If during the season the rider would like to move up into the Stepping Stone divisions, they may do so and carry half (50%) of their Introductory points into the Stepping Stone division. No cross-entry into any other division is allowed by that rider. Jr/Am only. USHJA Outreach WT Poles /WT Equitation

Saturday (Cont)

Hunter / Equitation Warm-Ups
Open to all. UNJUDGED.

Leadline

No age limit. Offered both days. Horse or pony must be led/controlled by a qualified horse leader. Riders may not enter any other classes.

Medal Class additional information

Junior and Amateurs only. The rider must be a member of NWAHJA in good standing and the horse must be owned by a member of NWAHJA in good standing to enter this class. This is an equitation class over a course that is moderately more difficult than a typical hunter course. The course stresses competent and accurate riding skills. All medal classes will have a required work-off after the first round, of the top 2-6 riders at the judges discretion, with the Top 4 riders being standard. All riders accumulating 13 points or more in their medal division through the show season will qualify for the medal finals held at the NWAHJA Year-End show. There will be qualifying medal classes held at the Year-End Show with the finals held after. Only two (2) riders are required for medal classes to fill. Please visit <https://www.usef.org/forms-pubs/XdvTAt99tBw/eq-equitation-division> for a full description of tests from which the judge may choose (EQ113).

Jumpers

All jumper classes are open to all. See Table Descriptions page for more info.

Note: To conserve time, we will be removing the warmup jumper rounds and replacing them with two short schooling breaks.

Xrail Jumper(12" Crossrails, NO Combinations)-- Optimum Time
First and Second Class: Table II Sec. 1

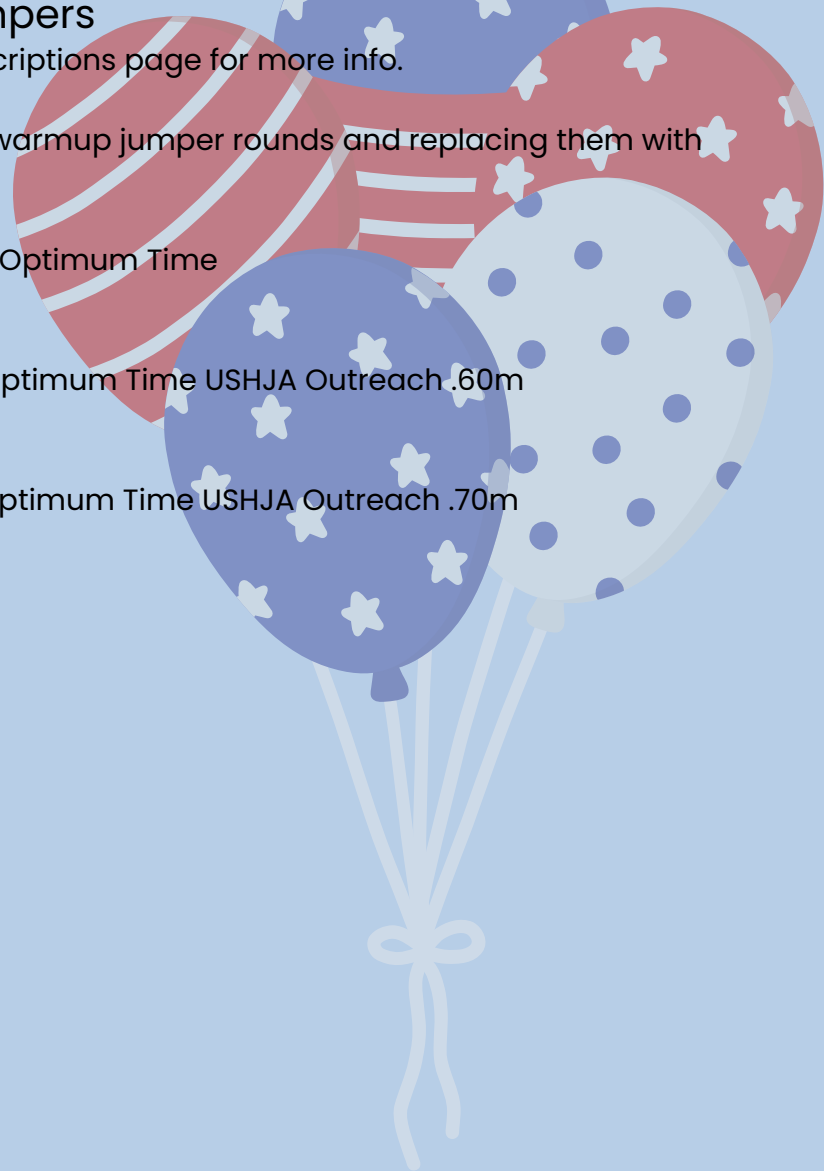
0.60m Jumper (NO oxers, NO Combinations)-- Optimum Time USHJA Outreach .60m
First and Second Class: Table IV, Sec. 1

0.70m Jumper (NO oxers, NO Combinations)-- Optimum Time USHJA Outreach .70m
First and Second Class: Table IV, Sec. 1

0.75m Jumper-- USHJA Outreach .75-.80m
First Class: Table II, Sec. 1
Second Class: Table II, Sec. 2 (b)

0.85m Jumper -- USHJA Outreach .85 m
First Class: Table II, Sec. 1
Second Class: Table II, Sec. 2 (b)

0.95m Jumper -- USHJA Outreach .90-.95m
First Class: Table II, Sec. 1
Second Class: Table II, Sec. 2 (b)



Sunday

Hunters/Equitation/Medals

Maiden Hunter

12" Crossrails in, 18" verticals out, OR 18" verticals in, 2' verticals out. Riders may move up and down in height throughout the season without penalty. The courses will be six jumps with diagonal lines or single fences present including flowers. The rider may trot the entire course, trot to the line and canter away, or canter the entire course. Simple changes not to be penalized. On the flat, the rider will be asked to show at the walk and trot in both directions. In the under saddle: only walk and trot to be judged, canter optional and not judged. Horse/pony in FIRST YEAR of showing only. Open to all. USHJA Outreach Hunters 18"

Crossrail Hunter / Equitation

12" Crossrails. The courses will be 6-8 fences 12" crossbars with diagonal lines or single fence present including flowers. The rider may trot the entire course, trot to the line and canter away, or canter the entire course. Simple changes not to be penalized. On the flat, the rider will be asked to show at the walk and trot in both directions. No cross-entry into any other class or division is allowed by that horse/rider combination, except Sunday's Crossrail Warm Up. Jr/Am Riders Only. USHJA Outreach Hunters 18" or crossrails / Equitation 18" or crossrails

Baby Green Hunter

2' with fill, NO oxers. Simple changes not to be penalized. Riders will be asked to show at the walk, trot, and canter in the under-saddle class. Horse/pony in first TWO YEARS of showing only. Open to all. USHJA Outreach Hunters 2'

Open Hunter

Can be ridden at any one chosen height 2' to 3' on Sunday. Rounds will be ridden throughout the day as course heights are changed for other divisions. Under saddle class will run all together, and will show walk, trot, and canter. Open to all. USHJA Outreach Hunters 2' / 2'3" / 2'6" / 2'9" / 3'

Very Low Hunter / Equitation

2' with fill. NO oxers. Riders will be asked to show at the walk, trot, and canter in the under-saddle class. Simple changes not to be penalized. Jr/Am Only. USHJA Outreach Hunters 2' / Equitation 2'

2' Medal

2' with fill. NO oxers. Simple changes not to be penalized. Additional testing of Top 2, and up to Top 6, after first round required. USEF Tests 1-8 may be used. Jr/Am only. USHJA Outreach Equitation 2'

Beginner Hunter / Beginner Equitation

2'3". May have oxers with maximum spread of 2'3". Riders will be asked to show at the walk, trot, and canter in the under-saddle class. Jr/Am Only. USHJA Outreach Hunters 2'3" / Equitation 2'3"

NWAHJA Hunter

2'6". Jr/Am Only. Under-saddle class will show walk, trot, and canter. USHJA Outreach Hunters 2'6"

NWAHJA Medal

2'6". Additional testing of Top 2, and up to Top 6, after first round required. USEF Tests 1-14 may be used.

Jr/Am Only.

Sunday (Cont)

NWAHJA Equitation

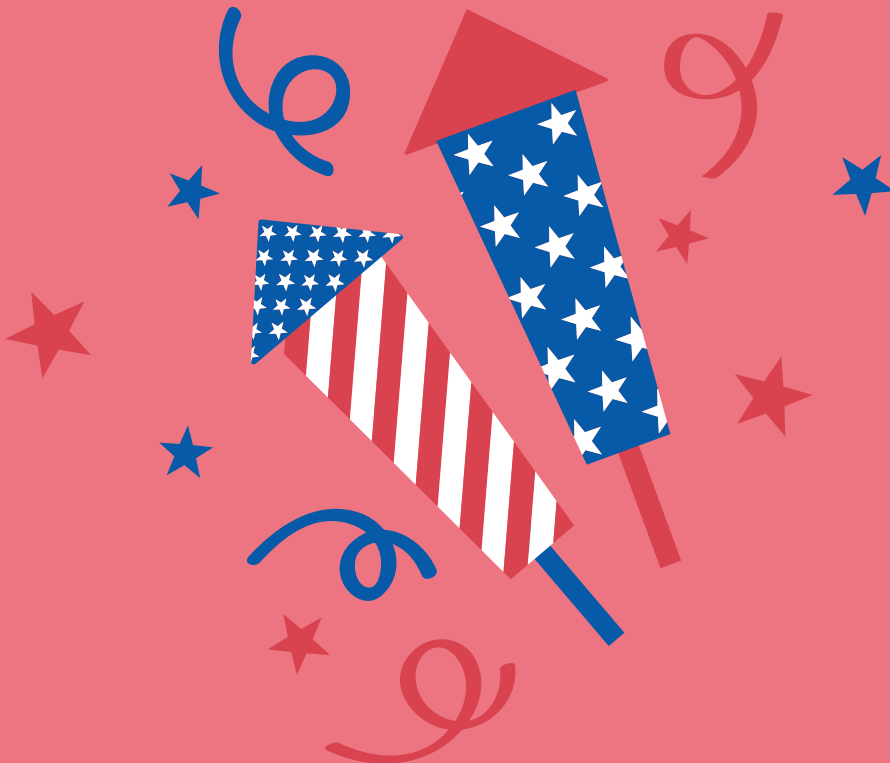
2'6". Riders may choose fence height and may move up and down in height throughout the season without penalty. Rounds will be ridden throughout the day as course heights are changed for other divisions. Jr/Am only. USHJA Outreach Equitation 2'6" /2'9"

Child/Adult Medal

2'9 OR 3'. Riders may choose fence height and may move up and down in height throughout the season. The course must also include at least three of the following: bending lines, narrow jump (5'6" - 8'), rollback turn, fence at the end of the ring, long approach to a single jump. To be judged on style, execution, rider's position, seat, and the correctness and the effect of the aids. Class consists of a Flat Phase and Over Fences Phase, each to count for 50% of score. Flat phase will run first, riders will be asked to show at the working walk, walking trot sitting, working trot rising, and working canter. Counter canter, as well as lengthening and collection of each gait may be included at judge's discretion. Upon completion of the flat phase, all riders will return for an over fences phase on the same horse. Additional testing of Top 2, and up to Top 6, after both phases required using USEF Tests 1-23. Ponies not to be penalized for adding a stride as appropriate for their size. Riders may not cross enter into any other medal class. Jr/Am Only. USHJA Outreach Equitation 2'9 or 3'

Child/Adult Hunter / Equitation

2'9 OR 3'. Riders may choose fence height and may move up and down in height throughout the season. Under saddle class will show walk, trot, and canter. Jr/Am only. USHJA Outreach Hunters or Equitation 2'9 or 3'



Equitation Challenge

Written Exam can be taken any time Friday or Saturday, or Sunday before 10am.

Hands on Practicum offered from

8am-9:30

11am-1pm

3:30-5pm

Saturday and Sunday.



Friday

11:00- open schooling NO JUMPING

11:45 Jumper Schooling Begins

Break: 10 minutes - .75m to .95 schooling

38-0.75m Jumper I - Table II Sec 1

39-0.75m Jumper II - Table II Sec 2 (b)

0.75 NWA Stables Gamblers Choice

41-0.85m Jumper I - Table II Sec 1

42-0.85m Jumper II - Table II Sec 2(b)

44-0.95m Jumper I - Table II Sec 1

45-0.95m Jumper II - Table II Sec 2(b)

3:00 Derby Course Walk

3:30 pm DERBIES START

18" Plum Point Farm Hunter Derby

2' Deer Creek Farm Hunter Derby

2'6" / 2'9" Buchanan Street Family
Dentistry Hunter Derby

Saturday

06:45am Open Schooling

08:00am CLASSES START

110. Leadline will run between classes, as close to 10am as possible

- 1-Low Adult Hunter U/S (2' or 2'3)
- 102-Warm Up - 2'3" - SATURDAY
- 2-Low Adult Hunter O/F I (2' or 2'3)
- 3-Low Adult Hunter O/F II (2' or 2'3)
- 4-Low Adult Medal (2' or 2'3)
- 101-Warm Up- 2' - SATURDAY
- 5-Low Open Hunter O/F I (18", 2', or 2'3)
- 6-Low Open Hunter O/F II (18", 2', or 2'3)

Break: 15 minutes - 18" Schooling

- 7-Low Open Hunter Under Saddle (18", 2', or 2'3)
- 8-Short Stirrup (11 & Under) Hunter U/S (18")
- 11-Short Stirrup (11 & Under) Equitation on the Flat
- 13-Long Stirrup (12 & Up) Hunter Undersaddle
- 16-Long Stirrup (12 & Up) Equitation on the Flat
- 100-Warm Up - 18" - SATURDAY
- 9-Short Stirrup (11 & Under) Hunter O/F I (18")
- 10-Short Stirrup (11 & Under) Hunter O/F II (18")
- 12-Short Stirrup (11 & Under) Equitation O/F (18")
- 14-Long Stirrup (12 & Up) Hunter O/F I (18")
- 15-Long Stirrup (12 & Up) Hunter O/F II (18")
- 17-Long Stirrup (12 & Up) Equitation O/F (18")

Break: 20 minutes - Stepping Stone Schooling

- 18-Stepping Stone Hunter Under Saddle
- 21-Stepping Stone Equitation On the Flat
- 19-Stepping Stone Hunter O/F I (W/T Xrails)
- 20-Stepping Stone Hunter O/F II (W/T Xrails)
- 22-Stepping Stone Equitation O/F (W/T Xrails)

Break: 20 minutes - Poles Schooling

- 23-Introductory Hunter U/S (poles)
- 26-Introductory Equitation on the Flat (poles)
- 24-Introductory Hunter O/F I (poles)
- 25-Introductory Hunter O/F II (poles)
- 27-Introductory Equitation O/F (poles)

Break: 25 minutes - Course Change To Jumpers & Course Walk

Break: 10 minutes - xrail to .70 schooling

- 29- Xrail Jumper I - Table II Sec 1
- 30- Xrail Jumper II- Table II Sec 1
- 32-0.60m Jumper I - Table IV Sec 1
- 33-0.60m Jumper II - Table IV Sec 1
- 35-0.70m Jumper I - Table IV Sec 1
- 36-0.70m Jumper II - Table IV Sec 1



Sunday

06:45am Open Schooling

07:45am **Maiden Only Schooling break (15 minutes) **

08:00am CLASSES START

111. Leadline will run between classes, as close to 10am as possible

46-Maiden Hunter Under Saddle

103-Warm Up - Maiden - SUNDAY

47-Maiden Hunter O/F I (Xrails/18" or 18"/2')

48-Maiden Hunter O/F II (Xrails/18" or 18"/2')

Break: 10 minutes - Crossrail Schooling

Break: 10 minutes - Crossrail Schooling

52-Crossrail Equitation on the Flat

50-Crossrail Hunter O/F I

51-Crossrail Hunter O/F II

53-Crossrail Equitation O/F

Break: 15 minutes - Baby Green Schooling

54-Baby Green Hunter U/S (2')

105-Warm Up - 2' - SUNDAY

55-Baby Green Hunter O/F I (2')

56-Baby Green Hunter O/F II (2')

Break: 15 minutes - 2' Schooling

60-Very Low Hunter U/S (2')

63-Very Low Equitation On the Flat (2')

58-Open Hunter O/F I (2', 2'3, 2'6, 2'9, or 3')

59-Open Hunter O/F II (2', 2'3, 2'6, 2'9, or 3')

61-Very Low Hunter O/F I (2')

62-Very Low Hunter O/F II (2')

64-Very Low Equitation O/F (2')

65-2' Medal

Break: 15 minutes - 2'3" Schooling

66-Beginner Hunter U/S (2'3)

69-Beginner Equitation on the Flat (2'3)

106-Warm Up - 2'3" - SUNDAY

67-Beginner Hunter O/F I (2'3)

68-Beginner Hunter O/F II (2'3)

70-Beginner Equitation O/F (2'3)

Break: 15 minutes - 2'6" Schooling

57-Open Hunter U/S (2', 2'3, 2'6, 2'9, or 3')

71-NWAHJA Hunter U/S (2'6)

74-NWAHJA Equitation on the Flat (2'6)

107-Warm Up - 2'6" - SUNDAY

72-NWAHJA Hunter O/F I (2'6)

73-NWAHJA Hunter O/F II (2'6)

75-NWAHJA Equitation O/F (2'6")

76-NWAHJA Medal (2'6)

Break: 15 minutes - 2'9"-3' Schooling

79-Child/Adult Hunter U/S

81-Child/Adult Hunter Equitation on the Flat

108-Warm Up - 2'9" - SUNDAY

109-Warm Up - 3' - SUNDAY

77-Child/Adult Hunter O/F I (2'9" or 3')

78-Child/Adult Hunter O/F II (2'9" or 3')

82-Child Adult Equitation O/F (2'9" or 3')

80-Child/Adult Medal (2'9 or 3')

