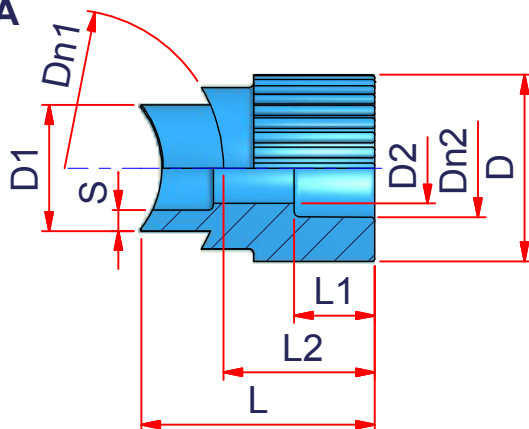
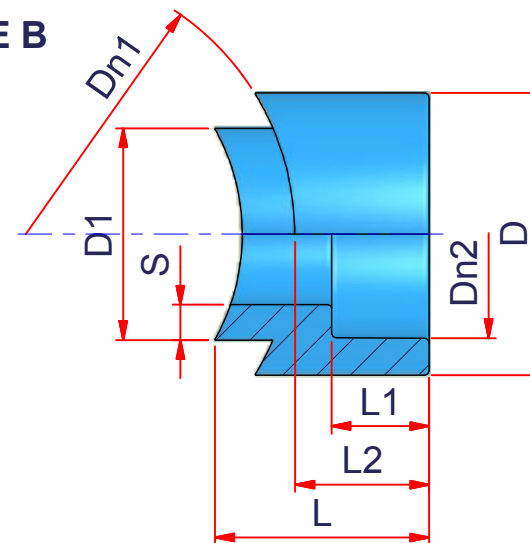


TYPE A

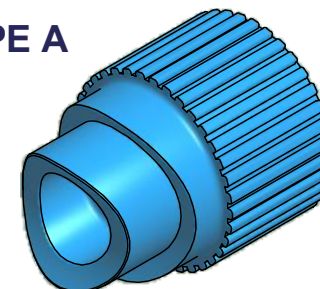


TYPE B

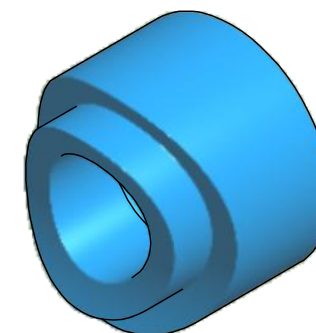


CODE	Dn1	Dn2	S	D1	D2	D	L1	L2	L
03NGS5020 (A)	50	20	4,7	25	15,6	37,6	16	30	40
03NGS6320 (A)	63	20	4,2	25	14,1	37	16	30	46,5
03NGS7520 (A)	75	20	4,2	25	14,1	37	16	30	45
03NGS9020 (A)	90	20	4,2	25	14,1	37	16	30	46,7
03NGS11020 (A)	110	20	4,2	25	14,1	37	16	30	49,3
03NGS5025 (A)	50	25	4,7	25	15,6	37	14,5	30	39,5
03NGS6325 (A)	63	25	4,2	25	14,1	37	17	30	46,5
03NGS7525 (A)	75	25	4,2	25	14,1	37	17	30	45
03NGS9025 (A)	90	25	4,2	25	14,1	37	17	30	46,7
03NGS11025 (A)	110	25	4,2	25	14,1	37	17	30	49
03NGS6332 (A)	63	32	5,4	32	21	54	20	37	57
03NGS7532 (A)	75	32	5,4	32	24	54	20	37	54
03NGS9032 (A)	90	32	5,4	32	24	54	20	37	55,4
03NGS11032 (A)	110	32	5,4	32	24	54	20	37	57,7
03NGS16040 (B)	160	40	6,7	40	-	52	22	34	53
03NGS12563 (B)	125	63	10,5	63	-	84	29	58	58
03NGS16063 (B)	160	63	10,5	63	-	84	29	40	63,6

TYPE A



TYPE B



ITEM: **NGS**

DESC: GIUNTO A SELLA A SALDARE
WELDING SADDLE

C:\Vault_Temp\Disegni\Corinna\Tabelle\Niron\Ngs\NI10001.dwg



DRAWING No:
NI10001

SHEET OF	REV.
1 1	0

www.nupigeco.com - info@nupigeco.com

All dimensions have to be considered in millimeters with 5% tolerance if not otherwise mentioned