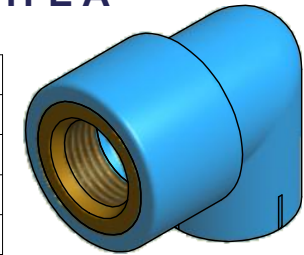
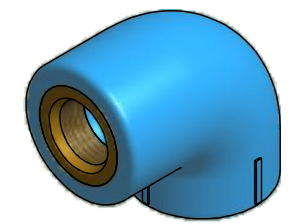


CODE	Dn	D1	D	F	LF min	L1	L2	L	H1	H	CH	LCH
03NGF1612 (A)	16	14	37	1/2"	11,5	13	39	53,5	27,5	46	-	-
03NGF2012 (B)	20	14	37	1/2"	11,5	16	39	53,5	27,5	46	-	-
03NGF2512 (A)	25	14	37	1/2"	11,5	17	39	56,5	30,5	49	-	-
03NGF2534 (A)	25	18,5	42	3/4"	13,2	17	39	56,5	30,5	51,5	-	-
03NGF3212 (B)	32	14	42	1/2"	11,5	18	46	67	36	57	-	-
03NGF3234 (B)	32	18,5	42	3/4"	13,2	18	46	67	36	57	-	-
03NGF321 (B)	32	24	54	1"	18	20	46	67	47	74	-	-
03NGF401 (B)	40	24	57	1"	18	20	52	79	43	72	-	-
03NGF50114 (C)	50	33	70	1"1/4	21,4	25	66	101	51	86	46	15
03NGF50112 (C)	50	39,5	70	1"1/2	19	25	66	101	51	86	55	15
03NGF63112 (C)	63	39,5	88	1"1/2	19	29	77	121	62	106	55	15
03NGF632 (C)	63	50	88	2"	23,7	29	82	126	62	106	65	20

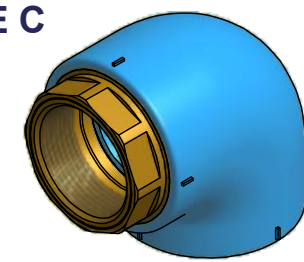
**TYPE A**



**TYPE B**



**TYPE C**



SISTEMA  
**NIRON**  
**nupigeco**

www.nupigeco.com - info@nupigeco.com

ITEM: **NGF**

C:\Vault\_Temp\Disegni\Corinna\Tabelle\Niron\Ngr\NI10015.dwg

DESC: GOMITO A 90° FILETTATO FEMMINA  
 FEMALE THREAD 90° ELBOW

DRAWING No:  
**NI10015**

SHEET OF	REV.
1 1	0

All dimensions have to be considered in millimeters with 5% tolerance if not otherwise mentioned