

VelaShape® III

Refining and mastering body treatments

IR & RF technology for cellulite
and circumference reduction



 **CANDELA™**
Science. Results. Trust.



From pioneering the non-invasive body shaping industry to revolutionizing practices around the globe



Candela is doing it again with the VelaShape III System. With over a dozen powerful features, including blazing performance, precision and flexibility, VelaShape III device sets the stage to master the art of body treatments.

It's proven to temporarily reduce the appearance of cellulite, as well as thigh circumference ± - areas that women everywhere identify as problem zones—with a deep therapeutic treatment that delivers consistent, reproducible results, without downtime or discomfort.

Clinically Proven Success

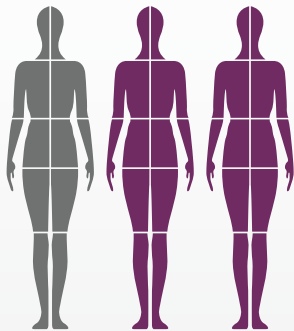
- **Rapidly reaches therapeutic endpoint of 42°C temperature** – Unique 150W RF power and consistent energy delivery sustain target temperature throughout the treatment time.
- **Optional single-session protocol** – Average 2.6 cm circumference reduction.^b
- **100% response rate** – Some patients achieve at least 1.5 cm circumference reduction after 1 session, proven in 42-patient study.

Cellulite affects 85-98%
of women and 10 percent of men^a

The body shaping market



Most women have tried
diet & exercise
but they still feel it is not enough.*

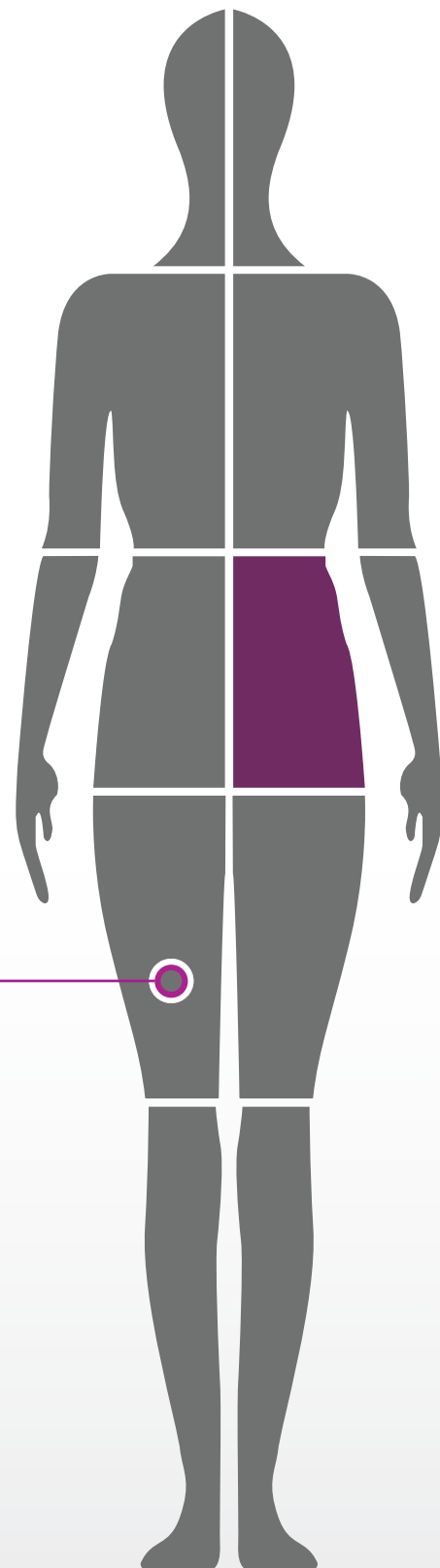


1 in 3 women

say they have considered more
than just dieting and exercise to
get rid of their fat.*

91%

of women say there are things
about their body they want to
change or reduce.*



"VelaShape III system decreased the appearance of cellulite by firming up the fibers and reducing the size of the fat cells."

Sandra Johnson, MD
Johnson Dermatology
Fort Smith, AR





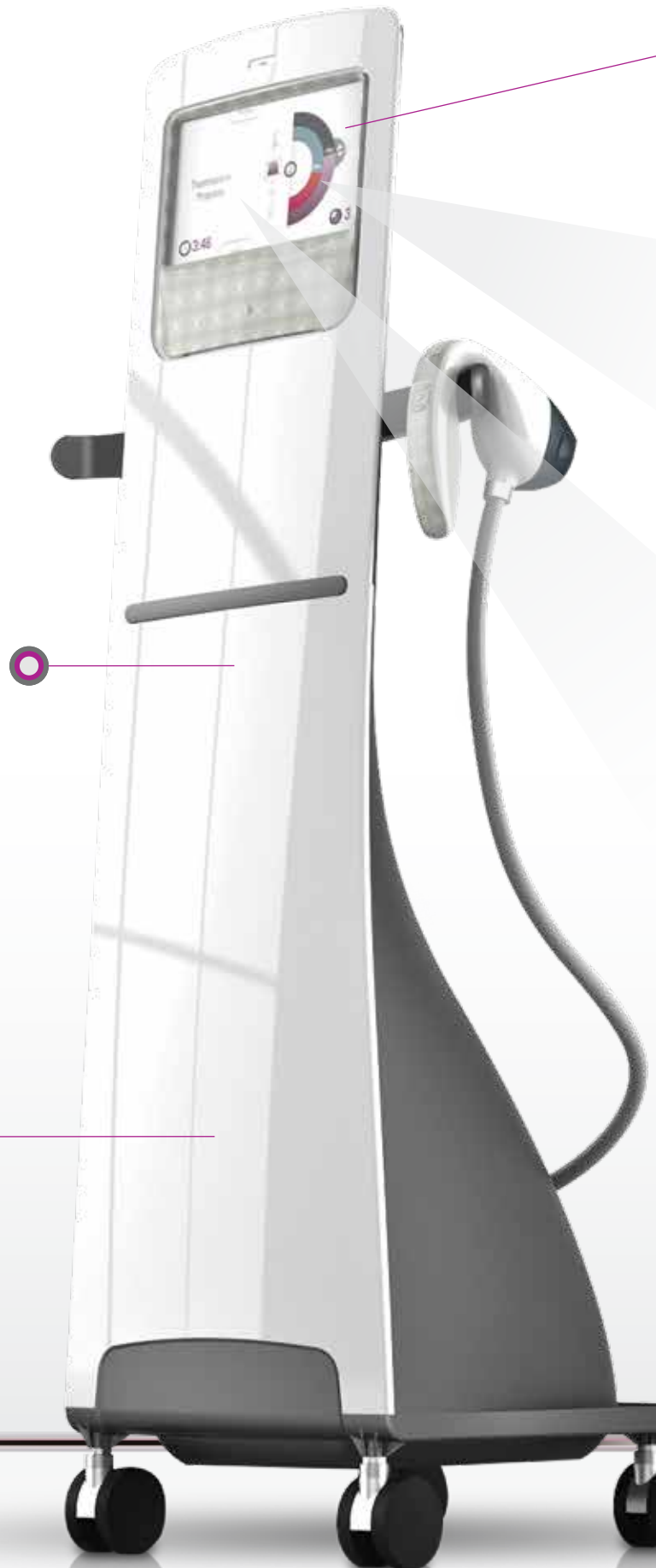
Designed
to optimize results

Sophisticated engineering inside and out

- State-of-the-art design to fit any size practice – 60% smaller, lighter and mobile
- Reduce operator fatigue with ergonomic applicators and foot pedal accessory
- Expanded treatment range with multiple cover sizes
- Smart RF™ is the industry's first closed-loop RF that measures skin's impedance to ensure consistent energy delivery, reducing the number of non-responders
- Precisely monitor tissue temperature with built-in IR temperature sensor and efficiently sustain end point temperature longer with Intelligent Feedback System™

Power and speed

- Achieve end point temperature in less time with up to 150 W of RF energy
- Reduce number of treatment sessions by up to 75%
- Sustain end point temperature longer to minimize patient discomfort



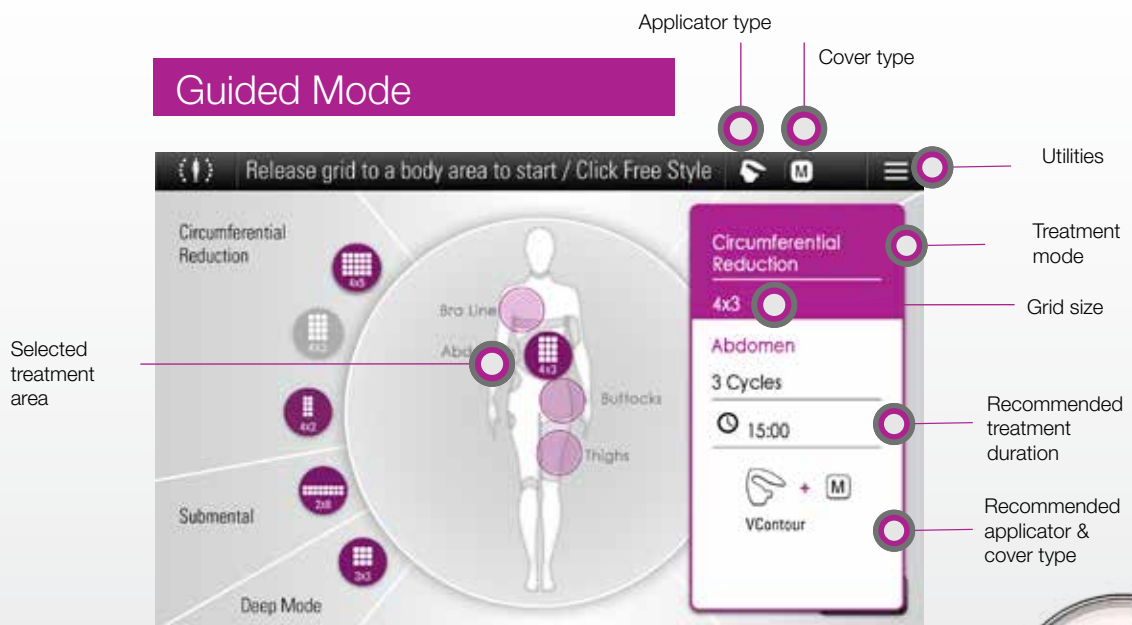
State-of-the-art user interface

- Easy-to-use, intuitive GUI enables quick and easy set-up of treatment parameters before and during each treatment
- Based on the 10" multi-touch Android interface with full HD display

Freestyle Mode



Guided Mode

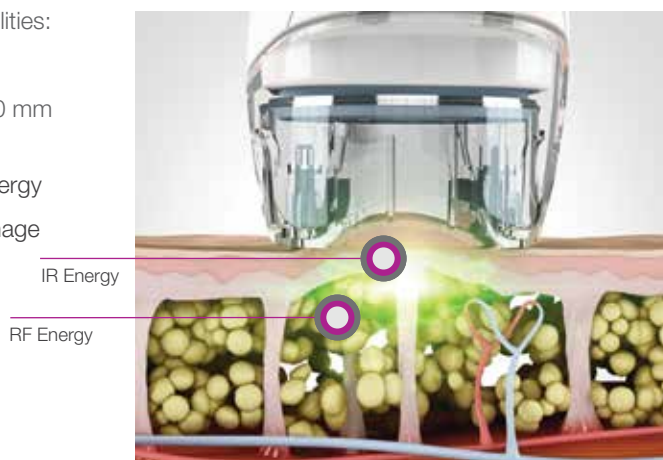


Science: A synergistic use of energies

VelaShape III system employs a combination of modalities:

- Infrared light (IR) heats the tissue superficially
- Bi-polar radio frequency (RF) heats tissue up to 20 mm in depth
- Vacuum technology ensures precise delivery of energy
- Mechanical manipulation improves lymphatic drainage and cellulite smoothing.

The combination of IR and vacuum-coupled RF technologies causes deep heating of the fat cells (adipocytes), their surrounding connective fibrous septae and the underlying dermal collagen fibers. Efficient heating of the adipocytes is achieved by higher output of the RF.



Results: Proven technology with visible results

VelaShape III device's optimal electrode design coupled with vacuum allows for deep and efficient heat penetration.

This in turn increases:

- Circulation
- Cellular metabolism
- Lymphatic drainage
- Collagen deposition

In addition, extracellular matrix is remodeled due to the stimulation of fibroblast activity.

The result: a localized circumference reduction and an overall improvement in skin structure and quality.



VContour Applicator

- New RF electrode design improves contact with the skin and delivers precise energy delivery to the fat layer.
- Large, medium and small cover sizes for expanded treatment capabilities.



VSmooth Applicator

- For cellulite reduction in large areas.
- Delivers a combination of modalities: bi-polar radio frequency (RF energy), Infrared light (IR), vacuum, and mechanical manipulation.

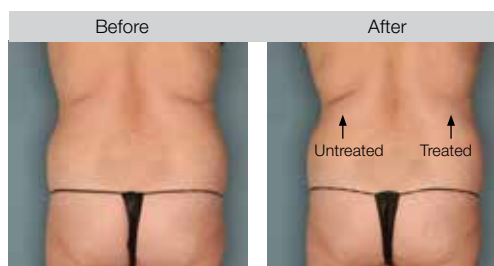
Trust: Recognized by physicians and patients everywhere

With over 10 years of clinical experience, more than 5 million independent treatments and the most published studies of any medical body shaping device, the VelaShape treatment is a well recognized non-invasive body shaping treatment on the market today.

- Post-partum VelaShape patients showed an average measured reduction of 10%^{††} in the treated area^{***}
- 97% of patients reported satisfaction with their VelaShape treatment^{***}
- Majority of patients reported no discomfort during or following treatment ^{‡‡}



Photos courtesy of Ruthie Amir, MD, Israel



Photos courtesy of Ruthie Amir, MD, Israel



Photos courtesy of Gerald Boey, MD, Vancouver, BC, Canada



Photos courtesy of Matt Leavitt, MD, Port Orange, FL, USA



Photos courtesy of Zena Gabriel, MD, Newport Beach, CA, USA



Photos courtesy of Eun Hee Kang, MD, MY Clinic, Seoul, Korea

Photos have been unretouched and individual results may vary



VelaShape® III system

Comfortable, non-invasive body contouring

SYSTEM SPECIFICATIONS

Radio Frequency Power	Up to 150 W
Infrared LEDs	Up to 3.2 W
Light Spectrum	850 nm
Vacuum	Pulsed
Weight	44 lbs. / 20 kg.
Dimensions [W x D x H]	15 x 19 x 51.8" 38 x 49 x 132 cm
Electrical Requirements	110 VAC; 4A; 50 Hz; Single Phase 230 VAC; 2.5A; 50 Hz; Single Phase

“We found the treatment with VelaShape III system to be comfortable and well tolerated by patients. The increased power and the new ergonomic design update have improved the efficiency of the treatments and the ease of operator use.”

Alan Gold, MD, Plastic Surgeon Great Neck, New York

“VelaShape is my workhorse body shaping product. It is a must have for any cosmetic or dermatologic surgeon offering surgical and nonsurgical body shaping.”

Jason Emer, MD, Dermatologist, Beverly Hills, CA

Applicator	Vacuum	Wave length	Optical energy	RF peak power	Treated area	Cover
VSmooth	Pulsed	850 nm	Up to 3.2 W	Up to 150 W	40 x 40 mm ²	With rollers
VContour	Pulsed	850 nm	Up to 1.7 W	Up to 150 W	Small – 10 x 13 mm ² Medium – 25 x 30 mm ² Large – 25 x 50 mm ²	No rollers

For more information about how the VelaShape III system may help achieve your practice goals, contact your local Candela sales professional, or visit candelamedical.com.

Photos have been unretouched. Individual results may vary.

a. Source: Syneron proprietary consumer survey 2012 and 2015 b. VelaShape III White Paper, Ruthie Amir, MD, 2013. Data on File.

* Base: Total (n=1000), Ages of 25 – 60, Leger Marketing, Company controlled sponsored market research.

** Based on the results of a survey conducted by Kelton Market Research, September 2012, among 1,045 American women age 25 and over.

*** VelaShape III Clinical Paper (2008). Mark Winter, M.D., Laguna Hills, CA

† Data on file at Syneron. †† Geronemus et al. ‡ VelaShape III is CE indicated for non-invasive treatment for body contouring via temporary cellulite and circumference reduction. ‡‡ Adatto, et al, Lasers Med Sci, Apr. 2014.

 **CANDELA™**
Science. Results. Trust.

© 2019 Candela Corporation. This material contains registered and unregistered trademarks, trade-names, service marks and brand names of Candela Corporation and its affiliates. All other trademarks are the property of their respective owners. All rights reserved. PB83219EN

CE 0344