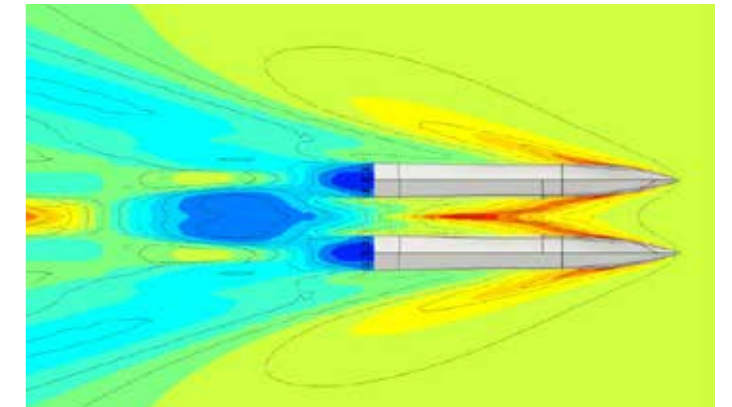


DIVERSE MARINE BREVITY SL CLASS CTV

Offshore Wind Crew Transfer Vessel



The Brevity SL Class hull design has been independently validated using the latest computational fluid dynamics (CFD) modelling methods, coupled with thorough 1:12 scale free running model tank testing. Combined, these processes constitute the most rigorous and scientific testing approach for any offshore wind CTV design to date.

The Brevity SL Class is fitted with Hullvane T400 transom foils to reduce fuel consumption, lower emissions and increase passenger comfort. Efficiency has increased by 17% at transition speeds and 6% at sprint speeds with a trim reduction of 1% across all speed ranges.

The Diverse Marine Brevity SL Class CTV is a pioneering crew transfer vessel design that refines the formula for offshore wind support with class leading performance and efficiency.

The Brevity SL remains under 24m loadline length ensuring dual coding to HS-OSC and Workboat Code Edition 3. A lighter construction coupled to powerful propulsion systems maximises speed potential and fuel efficient cruising speeds. Transom foils optimise vessel trim, reduce pitch and roll motions and provide propulsion efficiency at lower RPM.

Surpassing the capability that has been achieved by the previous generation of vessels operating offshore, it builds on lessons learnt supporting European projects throughout construction and operation/maintenance.

Available as Quad IPS, Quad Hybrid IPS, Twin IPS Professional Hybrid, Twin CPP, Twin CPP Hybrid and in the future, alternative fuels, leading to full electric to cater for different end user requirements and budgets.



DIVERSE MARINE BREVITY SL CLASS CTV

Offshore Wind Crew Transfer Vessel

GENERAL

Construction Material	Aluminium
Superstructure Mounting	Resilient <60bDa
Classification	Bureau Veritas 1+ Hull • Mach Wind Farm Service Ship-SI Sea Area 3
Flag	UK MCA HS-OSC UK MCA Workboat Code E3 Cat I

DIMENSIONS

Length Overall	26.00m
Length Between Perps	23.70m
Beam Overall	8.65m
Depth at F22	4.33m
Maximum Draft	1.80m
Lightship Displacement	70.00T
Deadweight	30.00T
Fully Laden Displacement	100.00T
Cargo Area	70m ²
Deck Load	1.5T/m ²
Crew	3-4
Industrial Personnel	24

TANK CAPACITIES

Marine Gas Oil	16 m ³
Fresh Water	2 m ³
Grey Water	0.5 m ³
Black Water	0.5 m ³
Bilge/Dirty Water	0.7 m ³
AdBlue/UREA	2 m ³

PROPULSION (Base Vessel)

Main Engines	4 x Volvo Penta IPS1050
Installed Power	2352kW
Exhaust	IMO Tier 3
Gearboxes	4 x Volvo Penta IPS 1.99:1
Propulsion	4 x Volvo Penta IPS30 Drives
Propellers	8 x Volvo Penta Q4
Speed Sprint	30.0 kts (Condition 4)
Speed Service	26.0 kts (Condition 3)

ELECTRICAL EQUIPMENT

Network	24v DC, 400/230V 50Hz AC
Generator Sets	2 x ONAN MDKDU 27kW

DECK EQUIPMENT

Anchor	1 x 150kg SHHP
Anchor Winch	Hercules AAW-150
Deck Crane	TMP 900XL
Bow Centre Fender	Buoyant Works
Bow Shoulder Fender	Buoyant Works
Side Fender	Buoyant Works
Pressure Washer	30-200 bar, 400v, 16l/min FW/SW
Fuel Transfer System	Integrated, Below Deck Reel

FIRE FIGHTING

Engine Space	Stat-X Aerosol
Fire Pump	1 x DESMI S70 516l/min, 400v 1 x DESMI S50 250l/min, 400v
Loose Extinguishers	Class/Flag Requirements

ACCOMMODATION

Main Deck	1 x Twin Cabins (2 Berth) 1 x Technician Secure Office OR 2 x Twin Cabins (4 Berth) 2 x Heads/Shower Spaces 24 x KPM DS100 c/w 4 Point 1 x Full Galley 1 x PAX Storage Rack
Wheelhouse	DM Command Console 4 x KPM DS100 c/w 4 Point 1 x Chart Table Area 1 x Crew Mess Area 1 x Tea Station (Quooker/Fridge)
Air Conditioning	Toshiba Air Cooled
Heating	Reverse Cycle Ai Con, Underfloor Heating Throughout

NAVIGATION & COMMUNICATION

Main Radar	Furuno FAR2218B
Main Electronic Chart	Furuno FMD3100
Second Radar	Furuno DRS4DNXT
Second Electronic Chart	Furuno Time Zero Dual TZ Pro Work
Third Electronic Chart	Furuno Timezero PC
Monitors	2 x Hatteland 19" 2 x Furuno MU190 1 x Hatteland 24" 1 x 15" EMS
Navtex	Furuno NX900B
DGPS	Furuno GPI70
AIS	Furuno FA170 Class A
Compass	Furuno SC70 Satellite
Communication	2 x Icom GM600 Class A
MF/HF	1 x Icom GM800 Class A
GMDSS	3 x Jotron Tron TR30
Log	1 x Walker 7070
Autopilot	Volvo Penta
Talkback	Phontec 3102 20Way
Echosounder	Furuno FE800
SART	2 x Jotron Tron AIS SART
EPIRB	1 x Jotron Tron 60 AIS EPIRB
Horn	Kahlenberg KB-30A (with signals)
CCTV	18 x IP67 HD Camera + NVR
Internet	Starlink Satellite Array (free issue) Peplink 5G Modem
Passenger Entertainment	2 x 32"TV, Freeview & Radio/DAB

