



NDIS PROPERTY AUSTRALIA
disability housing specialists



MUNNO PARA ADELAIDE SA



\$1,150,000

NO. 17 KIPFLER STREET

High Physical Support/Robust Hybrid | 2 Participants (plus OOA)



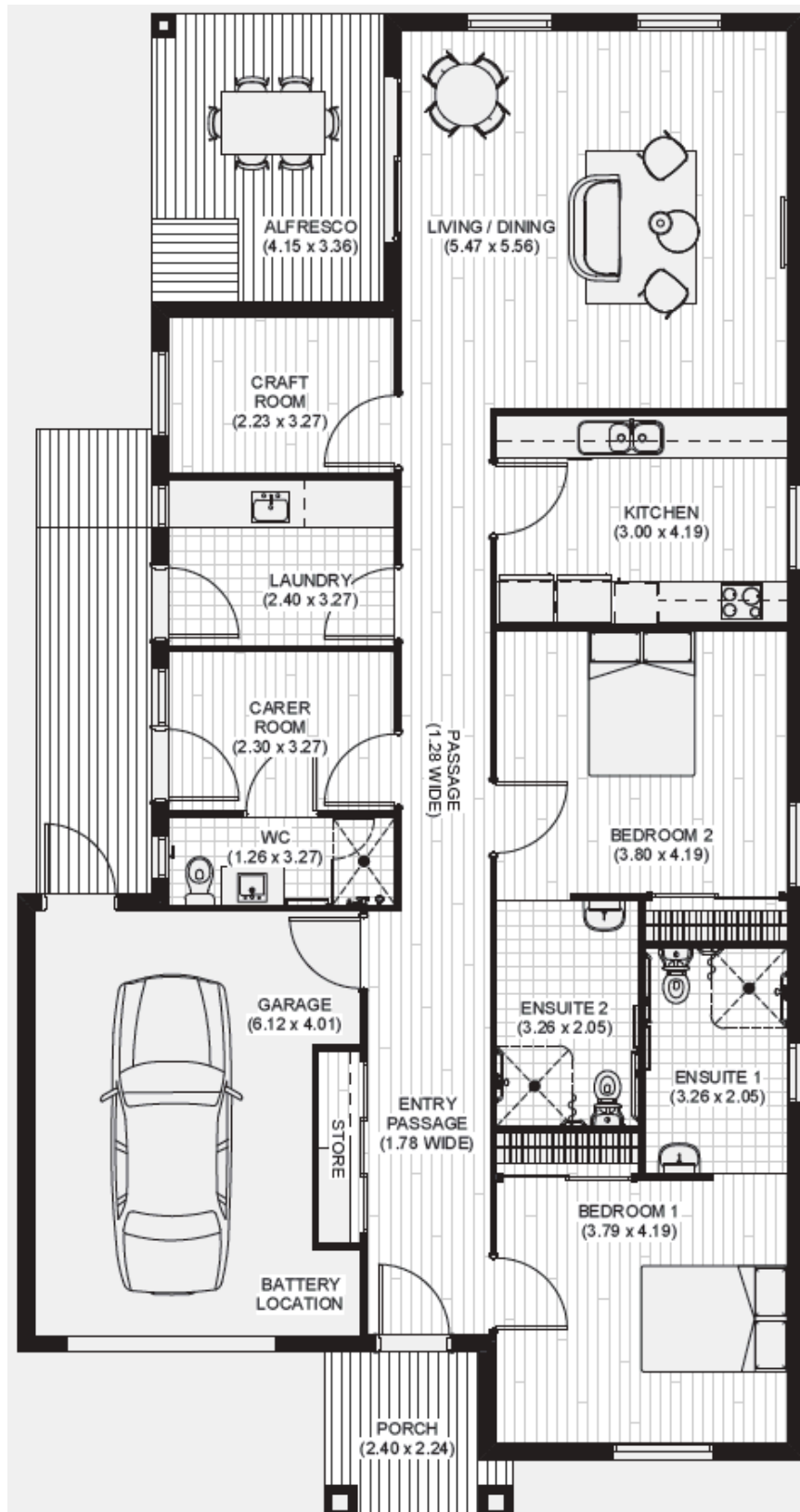
SALES@NDIS.PROPERTY



[1300 254 397](tel:1300254397)



WWW.NDIS.PROPERTY



Package Details

Floor Size: 206 sqm

Land Size: 375 sqm

Built and Tenanted

Current Income: \$119,221 pa

Appendix H - Couple only
living in house. HPS Funding

Estimated Build

Completion date: July
2024



Munno Parra

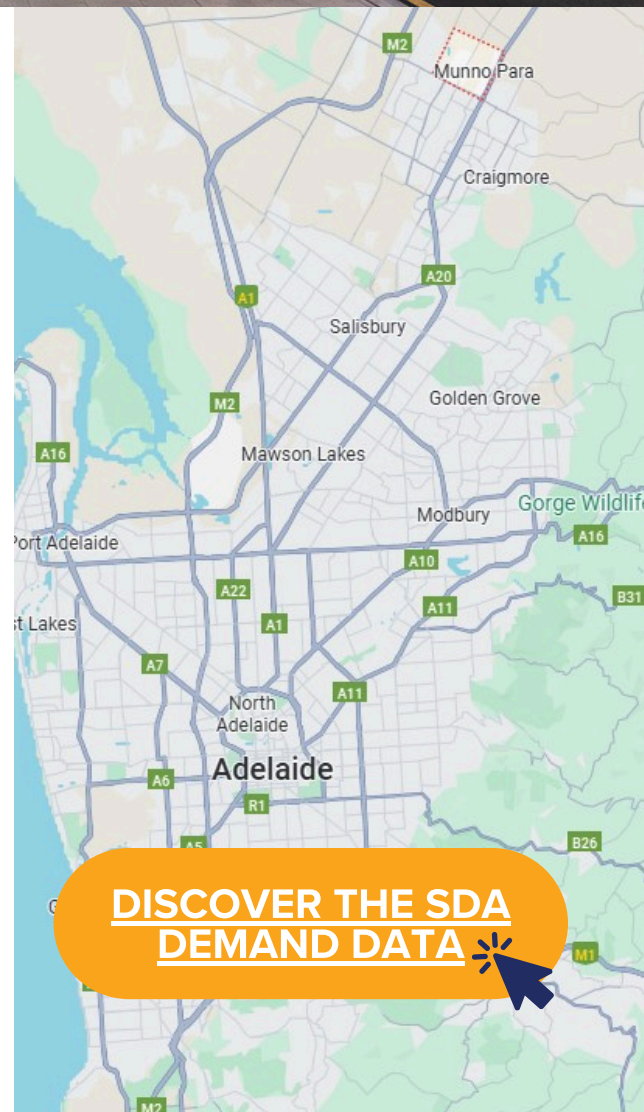
SOUTH AUSTRALIA



Munno Para, in Adelaide's northern suburbs, is a growing community with modern facilities and a friendly atmosphere. Locals enjoy green spaces like Munno Para Reserve with playgrounds, sports facilities, and picnic areas, as well as the scenic Smith Creek Trail for walking and cycling.

With easy access to shopping at Munno Para Shopping City, quality schools, and reliable public transport, the suburb combines everyday convenience with a relaxed lifestyle. Its location, just a short drive from the Barossa Valley, adds to its appeal for families and professionals alike.

- **Location** - 43.3 km North of Adelaide's Central Business District
- **Airport** - 37 mins drive to Adelaide Airport
- **Hospitals** - 12 min drive to Lyell McEwin Hospital
- **Shopping** - 13 min drive to Blakes Crossing Shopping Centre



**DISCOVER THE SDA
DEMAND DATA**