

FAIR REGISTRATION DUE JUNE 28th



Entering Fair Projects into FairEntry.com- Must be registered by JUNE 28th 11:59 PM

Instruction Sheet

1. Go to: <http://chippewa-mn.fairentry.com>
2. Click on "Sign in with 4HOnline"
3. Use your 4HOnline username and password. Be sure your "role" is listed as "Family."
4. Click "Begin Registration"
5. Click "Individual"
6. Click the button before the name of your chosen youth
7. Click "Continue"
8. Check your details. If all is correct, click "Continue to Entries"
9. "Add an Entry"
10. "Select" department you want to enter into
11. "Select" division
12. "Select" class
13. If the information is correct, click "Continue"
14. Select your club and "Continue"
15. If it asks you to add a specific animal, just click "Continue"
16. "Continue"
17. If your entry looks correct, "Continue"
18. "What do you want to do next?"
 - If you have more projects to enter for this individual, click "Add another Entry for this Exhibitor."
 - If you want to move on and enter projects for another 4-H'er in your family, click "Register another Exhibitor."
 - If you have finished entering projects for your family, IMPORTANT! click "**Continue to Payment.**"
19. "Continue"
20. "**Submit**" VERY IMPORTANT!

For assistance, call the Chippewa Extension office or you can find a [guide here](#).

Chippewa County 4-H Fair & Event Schedule 2024

Registration Deadlines

Friday, June 28th (completed online by 11:59 p.m.)Fair Registration Due (all exhibits)

Pre-Fair Judging Activities

Pre-Fair Judging Activities

Tuesday July 16th 6PM: Location Assembly Room- CourthouseClothing & Fashion Revue

Tuesday July 16th 5PM Demos and Food Revue Assembly Room- CourthouseFood Revue & Demonstrations

Tuesday July 23rd 6PM Location Old Milan School Performing Arts Night

Thursday, July 25th , 5:30 pm.....(Chippewa Champs, Mandt Livewires, Horse Club and independent) Pre-Fair Clean Up

Sunday, July 28th 3:00 p.m. – 6:00 p.m.4-H Building Exhibit Judging (Except Food Review, Food and Horticulture)

Tuesday, July 30th

8:00 a.m.....4-H Horse Show (Training then Performance)

Wednesday, July 31 – Opening Day

7:30 a.m. to 10:30 a.m.....Livestock Entry

10:00 a.m.....Food and Horticulture Exhibit Judging

11a.m - 9 p.m.....Food Stand Open

1:00 p.m.....4-H Poultry Show

4:00 p.m. – 7:00 p.m.....Little Farm Hands Open

5:00 p.m.....4-H Rabbit Show

6:30 p.m.....(Free Stage) 4-H Fashion Review

7:00 p.m.....(Free Stage) 4-H Cloverbud Recognition

Thursday, August 1

11a.m - 9 p.m.....Food Stand Open

8:00 a.m.....4-H Swine Show

11:00 a.m.....4-H Games Horse Show

5:00 p.m.....Pet Show

5:00 p.m. – 8:00 p.m.....Little Farm Hands Open

Friday, August 2

11a.m - 9 p.m.....Food Stand Open

8:00 a.m.....4-H Sheep Show

12:00 p.m.....4-H Horse Drill Team

2:00 p.m.....4-H Beef Show

5:00 p.m.....Livestock Costume Contest

5:00 p.m. – 8:00 p.m.....Little Farm Hands Open

6:00 p.m.....4-H Llama Show

Saturday, August 3

11a.m - 9 p.m.....Food Stand Open

8:00 a.m.....4-H Goat Show

1:00 p.m.....4-H Dairy Show

2:00 p.m.....Livestock Demonstrations

3:00 p.m. – 7:00 p.m.....Little Farm Hands Open

3:00 p.m.....4-H Horse Drill Team

4:00 p.m.....State Fair and Auction Meeting- Livestock Arena

4:00 p.m.....Deadline to mark intent for state fair. Please mark yes or no by your name/Animal/Exhibit on the SF Lineup Sheets in Hog Barn(Livestock) &/or 4-H Building (General)

6:00 p.m.....Deadline to Sign Up for Blue Ribbon Auction and Premiere Showmanship (Poster in Swine Barn)

6:00 p.m.....State fair paperwork & Payments due

Sunday, August 4

11:00 a.m. to 4:00 p.m..... Food Stand Open

11:00 a.m.....Premiere Showmanship

3:00 p.m.....4-H Blue Ribbon Auction

5:00 p.m.....Release Exhibits

Monday, August 5th , 5:30 pm.....(Cheerful Champs and Milan Challengers) Post-Fair Clean Up

Saturday August 10th, 9:00amDog Agility, Obedience & Showmanship,Swift County Fairgrounds, Appleton

4-H EXHIBIT RULES

1. **Eligibility:** Exhibits may be **added or dropped** until June 28th. Make your changes in **Fair Entry**. If you need assistance, contact your 4-H club leader or the Extension Office.
2. **Exhibit Requirements:** 4-Hers may exhibit **more than one** item per lot. Exhibits will be placed in blue, red or white groups with Champion and Reserve Ribbons awarded per judges orders. The same animal may not be shown by different 4-Hers (except Cloverbuds). General Projects may not be exhibited in both open class and 4-H.
3. **Registration:** You may enter more than one item per lot, but record each item separately. General suggestions are given at the beginning of each project area. Sign up by grade completed; ex. If you just finished 6th grade, sign up for grades 6 – 8. You will not be allowed to add projects after June 28th. However, you may drop projects. **Fair registration is due online by June 28th by 11:59 p.m.**
4. **Livestock arrival:** Livestock exhibits must be vet checked in on **Wednesday Morning, July 31st between 7:30a.m.-10:30a.m. *All livestock must be checked in at this time.*** Tack and feed may be brought in during the day on Wednesday.
5. General exhibits (except for all food and horticulture projects which will be judged Wednesday, July 31st at 10:A.M.) will be judged Sunday July 28th and must be in place by 8:00 p.m. that Sunday.
6. **Exhibit/Livestock release:** **UPON ORDER OF THE CHIPPEWA COUNTY FAIR BOARD, ALL LIVESTOCK AND BUILDING EXHIBITS MUST STAY AT THE FAIR. FAILURE TO OBEY THE RULE WILL RESULT IN FORFEITURE OF ALL AWARDS INCLUDING PREMIUMS, TROPHIES, RIBBONS, TRIPS AND PARTICIPATION IN BLUE RIBBON AUCTION.** All animals will be inspected prior to entry by the official County Fair veterinarian. Only the official County Fair veterinarian and County Fair Board will be allowed to release animals early due to illness or injury without loss of premiums, awards, trophies, Blue Ribbon Auction and State Fair trips. All livestock and building exhibits will be released at 5:00 p.m. on Sunday, August 4th 2024
7. **Cloverbud Policies:** When animals and Cloverbuds are together, **an adult/responsible person must supervise the animal at all times.** A responsible person is defined as adult leaders, teen leaders, parents, or other adults who may appropriately assist with the group. All Cloverbud entries will be judged non-competitively and will receive an award of merit and a \$2 premium. Cloverbud animals are allowed to be housed at the County Fair. (Some species may not allow room ie. Horse)

When cloverbuds and animals (including beef, cats,dairy, dogs, goats, horse, llama - alpaca, pets, poultry, rabbit, swine and sheep) are together at a 4-H program or participating at the county fair as a 4-H member, the following rules apply:

- A responsible person¹ must be with the cloverbud to guide and monitor their involvement at all times, including but not limited to movement within and to and from the trailers, barns, wash racks, and show arena.
 - Families may choose one of two acceptable ways to guide and monitor involvement in non-mounted activities:
 1. The responsible person is in control of the animal with the cloverbud at their side.
 2. The cloverbud is in control of the animal with the responsible person at their side to assist or take control of the animal when needed or as
 - When a cloverbud is mounted on a horse, the horse must always have a lead line and be under the control of the responsible person. directed by staff, volunteers or show managers.
8. **Code of Conduct:** The Minnesota 4-H Code of Conduct applies and will be enforced with 4-H members, 4-H parents and 4-H volunteers as follows:

- While participating in or attending a 4-H sponsored program (e.g. club meeting, project meeting, activity, event, learning opportunity).
- At the county fair while participating in or attending a 4-H event or while on premises used for 4-H purposes (e.g. show ring, exhibit building, barn, food stand).
- At the state fair, during their (or their child's) assigned encampment or assigned volunteer responsibility.

In addition, the Minnesota 4-H Code of Conduct applies and will be enforced as follows:

- At all times during the year of service for 4-H members who agree to represent Minnesota 4-H to the public by accepting a statewide 4-H leadership role (e.g. state 4-H ambassador, state 4-H PDC member).
 - At all times throughout a volunteer's service when the behavior outside of Minnesota 4-H puts youth at risk or has the potential to put youth at risk.
9. **Grievance Policy:** Grievances must be filed in writing. Forms are available in the 4-H Fair Office. A copy of the grievance policy is available upon request. **Decision of the judge is final and may not be appealed.**
 - **Within a 24 hr period, a committee of 4-h adult volunteers and youth leaders will be pulled together to take action on the filed grievance.**
 10. **Procedure for Entering Club Exhibits:** It is your club's responsibility to make sure a club officer (secretary, treasurer, president, etc.) signs up for these projects. See the Club Activities section for Exhibits ideas.
 11. **Conference Judging Expectations:** Members are encouraged to have Exhibits conference judged. Conference judging is an opportunity to ask questions and learn more about projects and exhibits from the judge. If, for some reason, you cannot be present for conference judging, you may still have your exhibit judged. Talk to the extension staff to make arrangements. **Parents are welcome to observe the conference judging, without interacting with the member and the judge.** However, they should not answer questions for the 4-Her or interfere in any other way.
 - [Absentee judging of projects](#)
 - [Judging experiences for youth with disabilities or injuries](#)
 12. IAFE Show Ethics must be followed at all times – [pdf of IAFE Show Ethics only \(here\)](#)
 13. **The Chippewa County 4-H Leaders Council and University of Minnesota Extension will not assume responsibility for objects that are lost, stolen or broken and are not responsible for accidents.**

Exhibits

1. Youth will be eligible for all show related premiums, awards, and participation in the state event when exhibition requirements are met. Approved early release is an exception to the rule and becomes a 4-H staff, official fair vet and fair board decision based on each situation.
2. All youth must be enrolled in 4-H to exhibit, demonstrate, or take part in projects. All work on exhibits entered must be done by the 4-H member and completed during the current 4-H year unless otherwise noted.
3. There are no longer any size requirements or restrictions, unless specified in a project area. However, to be eligible for the state fair, **Poster** exhibits **may not exceed** 22" wide x 28" high. They may be smaller.
4. **Education/Science Tri-Fold Exhibits:** There are no longer any size requirements or restrictions, unless specified in a project area. However, to be eligible for the state fair, Education/ Science Tri-fold Exhibits for all project areas, **may not exceed** 12" deep x 24" wide x 36" high. (Center back 24" wide x 36" high, right and left wings each 12" wide x 36" high.)
5. All exhibits will be evaluated by a conference with the judge. Project judging criteria:
 - Exhibit quality..... 25%
 - Educational value 25%
 - Knowledge and ability to explain 50%

Purple..... excellent quality of work and excellence in member's learning experience

Blue..... best quality of work

Red needs a little bit of work to make it a quality exhibit

White..... quite a few things need to be improved for a quality exhibit

6. **Floor Space for any exhibit should not exceed 20 square feet.** If your exhibit exceeds this space limitation, contact the Extension office.
7. **All exhibits must be labeled with a name, club, and county.** Other appropriate information for the project (i.e., vegetable varieties) should be included. If the exhibit has multiple pieces, **each part needs to be labeled** and should indicate 1 of 4, 2 of 4, etc.
8. Paper plates will be furnished for food exhibits.
9. Materials provided for display purposes are: baggies, small paper plates and tape. Garden boxes are not necessary. A spot for vegetables will be ready on the garden table. Food, electric, horticulture and mechanical science exhibits must stand by themselves through 30 mile per hour winds. Heavy cardboard boxes may be used as a base. Attach labels with name, age, club, and years in project on all exhibits, for example, sew them on clothing, tape onto home environment, and pin onto needlework items. Labels provide helpful information for the judges.
10. **Public Presentations:** Anyone 6th grade or older receiving a blue ribbon for a demonstration at the County Fair may advance to the State Fair. Livestock demonstrators must incorporate a live animal into the demonstration. Public presentations include: demonstrations, livestock demonstrations, illustrated presentations and Youth in Action.
11. **Copyright Law and Infringement:**
 - a. Copyright is a form of protection given to authors and creators of "original work. Original work includes a person's ideas captured in writing or as an image, photograph, song, audio recording, or visual recording.
 - b. All original work – including information found on the web – is subject to copyright protection. The author/creator has exclusive rights to reproduce, distribute, display, perform or make derivative works.
 - c. Before using another person's work as a part of your 4-H exhibit, be sure that the work is subject to fair use, has a creative commons license or that you have requested and received permission (in writing) to use the original work. If an exhibit infringes on copyright law, a decision may need to be made to remove the exhibit from display at the county or state fair.
12. **Community Impact Recognition**
 - a. Minnesota 4-H wants to recognize youth who are making a difference in their community and are sharing their story through their project(s) and exhibit(s).
 - b. Judges at local and state showcases will place a recognition sticker on each exhibit where the 4-H'er clearly articulates how their efforts made a positive community impact.
 - c. Exhibits and presentations may demonstrate the youth's community impact efforts through:
 - i. Direct Service: Involves face-to-face interactions with the people, animals, or environment being served - such as distributing meals or cleaning up a park
 - ii. Indirect Service: Involves benefiting a cause or group, but there isn't direct contact with those that benefit - such as fundraising or knitting blankets
 - iii. Advocacy: Involves researching issues of public interest and then encouraging action or promoting awareness - such as promoting mindfulness practices to a school curriculum committee, collecting water quality data for a community organization.
 - d. Note: to qualify as "community impact", the project should primarily benefit someone or something more than you individually, or your family

Animal Science

1. All beef, dairy, dog, goat, horse, llama-alpaca, rabbit, sheep and swine shown in 4-H livestock shows must have the required State 4-H ID system, ear tag and/or tattoo. Animals must be identified on

the appropriate 4-H livestock ownership affidavit/lease agreement. Any ID form requesting a premise number, call the Minnesota Board of Animal Health at 651-201-6816. (added 5-15-12) *All animal identification data must be submitted online, arrive in or postmarked by May 15th, to the Chippewa County Extension Office (with the exception of Market Beef due Feb. 15th). Any animals not ID'd by the deadline are ineligible for trophies or State trips, and will receive no higher than a Blue ribbon at county fair and cannot participate in the Blue Ribbon Auction. See one time exception rule on page 9, number 6.*

2. All animals exhibited must be owned solely by the member or member's family or leased by agreement. The family includes the 4-Her's parents or guardians and siblings living together as a family unit. The definition of family includes an extended family where the animals may be owned by grandparents with the 4-Her's parents actively involved with and working on the farm. Registered animals, not leased, must be registered in the exhibitor's name and/or the exhibitor's family name.
3. 4-Hers exhibiting livestock at the County Fair are responsible for care/feeding of animals they exhibit.
4. **All livestock exhibits must be pre-registered.**
5. 4-Hers must show their own animal in the class. If the 4-Her has multiple animals in one class, another 4-H member(s) from the same county can show the other animals.
6. All 4-Hers exhibiting livestock at the fair are eligible to participate in showmanship. You must show your own animal. Showmanship awards will be awarded in the Jr. and Sr. Divisions. For all Livestock Species unless posted otherwise; Juniors are 4-Hers in completed grades 3 through 8. Seniors are completed grades 9 and up. If there are more than 8 participants in the junior category, it will be divided into juniors grade 3 – 5 and intermediates grade 6 – 8. There must be a minimum of 3 in each class. Winners from previous years are still eligible to participate.
7. **Premier Showmanship:** All champion and reserve champion senior showmanship winners of a specific species are expected, but not required, to show in premier showmanship. If the selected winners decline or are unable to show, the next placing in the showmanship order will be in line to compete. If a 4-Her wins in premier showmanship, they are eligible to show again in premier showmanship in future years. If an exhibitor wins multiple species, they are asked to select 1 to represent. Note: see 7.a.ii below. The other species will move exhibitors up in line to fill in.
 - a. Showmanship order is determined by the judge during the species showmanship.
8. Premier Showmanship Cont.:
 - a. Contest will be held Sunday, August 4th at 11:00 am in the Livestock Arena.
 - i. The champion and reserve champion senior showman in beef, dairy, goat, sheep, swine, lama, rabbit, poultry, and horse are eligible to compete in this contest. Any 4-Her who received a blue in showmanship will be eligible to show in the place of a champion or reserve champion showman, if the showman chooses not to participate. A signup list will be posted in the Swine Barn. **All must be signed up by 6:00 p.m. on Saturday, August 3rd.**
 - ii. Shows will be divided into small breeds (lama/alpaca, rabbits, goats, poultry) and large breeds (beef, dairy, sheep, swine, horse) contests. Participants may show in either or both contests.
 - iii. Each species will be shown by all contestants in normal showmanship format
 - iv. Contestants will be ranked from 1st to last place, with a point total assigned for each placing (1st place will receive 1 point, 2nd – two points, etc.) Total points for each contestant will be added, with the lowest point total in each contest being the Premier Showman for that contest.
 - v. Contestants are responsible for providing their own animal unless it has been decided by the species superintendent, showman of the animal, or 4-H staff that that animal is not able to be handled by others due to temperament.
 - vi. Contestants will be judged on animal appearance, knowledge of species, and show ring presentation similar to showmanship.

9. Grooming of all livestock, including clipping, trimming, and blocking (all species) must be done by the exhibitor, members of the immediate family, or any other 4-H member. When a 4-Her has 2 or more animals in the same class, or is exhibiting in the cow/calf project, another enrolled 4-H member may show the second animal.
10. No animals may be advertised for sale and no farm, ranch, or sale signs may be displayed or worn in the show ring. The only signs other than 4-H stall cards and champion/reserve champion signs that may be displayed are educationally-based signs with performance or pedigree information and signs with the animal's name. Only decorations that support the 4-H Youth Development Program are allowed.
11. **Turnout pen**-Please limit turnout time to 20 minutes. If an animal is turned out do not turn your animal in with it. **Animals must not be left unattended.**
12. To show in the registered breed classes, animals must meet the registration requirements for that breed and registration papers must be available. Animals without proper registration papers (crossbreeds and grades) must be shown as commercial.
13. All animal health regulations will be in effect as stipulated by the Minnesota Board of Animal Health and the Official fair veterinarian.
14. **General requirements:** livestock and poultry that exhibit symptoms of any infectious or communicable disease, including ringworm and warts, may not be exhibited. All animals must be examined by the official veterinarian on the day admitted to the exhibition and at least once daily during the exhibition. No animal may enter or be at a public exhibition that is showing clinical signs of any infectious, contagious or communicable disease, including ringworm and warts.
 - a. **Cattle (Beef and Dairy):** *Must have official ID consisting of one of the following: 4-H electronic ear tag or Breed Registry Tattoos (acceptable if accompanied by breed registration number, pending registration not acceptable) For more information, go to the Minnesota Board of Animal Health website at: <http://mn.gov/bah/board/rules/official-id.html>*
 - b. **Sheep and goats:** All sheep and goats must be identified with official identification. Tags are available through the Minnesota Board of Animal Health, call 651-201-6809 (at no charge). *Sheep and goats within 30 days of giving birth (before or after) cannot be exhibited without prior approval from the Board of Animal Health.*
 - c. **Swine:** Swine must be individually identified with an ear tag and ear notches. A premise ID number is required to show at the State Fair.
 - d. **Horses:** all horses must be negative to an official test for Equine Infectious Anemia (EIA) within 12 months prior to the opening date of exhibition. Tests are not required for suckling foals accompanying a negative dam.
 - e. **Poultry Rules:** Chickens, turkeys, and game birds, except baby poultry, must be individually identified with a leg or wing band. Chickens, turkeys, game birds, and hatching eggs from these birds must be accompanied by a certificate or test chart to show that they originate from a hatchery or breeding flock that is classified pullorum-typhoid clean or are negative to a pullorum-typhoid test within 90 days prior to the opening date of the exhibition. Turkeys and turkey hatching eggs must be accompanied by a certificate or test chart to show that they originate from a hatchery or breeding flock that is classified *Mycoplasma gallisepticum* clean and *Mycoplasma synoviae* clean or are negative to a *Mycoplasma gallisepticum* and a *Mycoplasma synoviae* test within 90 days prior to the opening date of the exhibition.
 - f. **Dogs:** Dogs over four months of age must be accompanied by a certificate of rabies vaccination issued by a licensed veterinarian.
15. No intact (uncastrated) male dairy beef, sheep, swine, goats or horses allowed. (Exception: bull calves will be allowed only in the cow/calf project.)
16. **Exhibitors are responsible for cleaning their pens at the end of the Fair.** All bedding must be moved to the center aisle or place that a skid loader may access.
17. **Blue Ribbon Auction:**

- a. **You need to sign up for what you will be taking through the Blue Ribbon Auction by 6:00 pm Saturday August 3rd Sign up is located in the swine barn on a poster. You must fill out the requested information on the poster. There will be no sign ups after the 6PM deadline.** There will be a short meeting for participants and parents to talk about the auction process and expectations at 4PM with the state fair meeting. Any livestock receiving a blue ribbon or higher may participate in the auction unless they missed the sign up deadline, Animal ID deadline, or Fair Entry Deadline. See Exemption form on Pg 9 #6
 - b. Once in your 4-H career exemption may be used see pg 9 #6
 - i. By missing the deadline, the youths name and information will not be included in the program and the member will be added at the end of the auction.
 - c. **Showmanship Ribbons are NOT allowed to be used for ANY species.**
18. Herdsmanship: all livestock exhibitors will be judged by club for herdsmanship during the entire Fair. Herdsmanship consists not only of cleanliness of stalls, alleys, pen arrangement and appearance of animals, but also courtesy to the public and other exhibitors. Judging will begin on Thursday morning and end on Sunday afternoon. Score cards will be posted in the swine building. Top club will have first choice for livestock stalling at next year's Fair and a gift card.

State Fair or State Show Eligibility

1. Trips for State Fair, State Horse Show, and State Dog Show will be selected from blue ribbon exhibits only (see State Dog Show Rules for exceptions). Exhibit classes eligible for State Fair are marked with an asterisk *.
2. Members must show intent of taking their state fair trip by 4PM Saturday August 3rd on the state fair lineup posters in the swine barn. Trips will go in order and be based on trips allowed. Please mark yes or no by your name/project/animal. There will be a state fair exhibitor meeting at 4PM August 3rd in the Show arena. You may pick up state fair registration packets at this time, or after you know you have received a trip.. Completed Packets & Payments are due by 6PM Saturday August 3rd to 4-H staff.
3. Members selected to represent the county at the State Fair and State Horse Show **must have completed sixth grade. State Dog Show participants must have completed 3rd grade.**
4. To be eligible for a livestock trip to the State Fair, 4-H'ers must have completed Livestock Quality Assurance Training. State Policy: All youth participating as a State Fair 4-H livestock exhibitor in beef, dairy, sheep, swine, poultry, rabbits, meat goat, dairy goat, and llama-alpaca must have completed a livestock quality assurance training in which there are two training options 1) a 3 hour in-person workshop (LQA&E), or 2) a 1 hour on-line training (YQCA). Youth completing either quality assurance training option will receive a certificate of completion.
5. 4-Hers may take both a building exhibit and a livestock trip each year without restrictions, as well as attend State Dog and Horse Shows. Along with their qualifying state fair exhibit trip(s), 4-H members may participate in activities such as Share-the-Fun, demonstrations, Arts-In, or judging teams.
6. [Competitive events, deadlines, consequences and exemption options](#) Every Minnesota 4-H member is eligible for a "one-time" member exemption. This exemption provides the ability (one-time in a 4-H member's career) for the 4-H member to acknowledge they missed a 4-H deadline related to enrollment or competitive event participation and waive the consequences for the named deadline. Exemptions may be used for county fair pre-entry registration requirements,
7. State Fair livestock participants are responsible for transporting their animals to State Fair. County-arranged trucking will no longer be provided. A member must arrange transportation to the State Fair for a building exhibit over 2' x 2' x 3' in size, or withdraw in favor of the next highest placing exhibit.
8. No project will be exhibited at the State Fair unless the member can be present for judging at the State Fair. Exception: General Project virtual judging

9. 4-H youth that have been awarded a 4-H State Fair livestock trip through the local 4-H qualifying show must keep their designated trip animal on the county fairgrounds until the official release time to remain eligible for the 4-H State Fair trip. In the event that a youth/family requests an early release to travel/attend a national junior livestock show and education event, prior arrangements for early release must be made with and approved by the local 4-H staff and communicated to the county fair board. Proof of national junior show participation (program with youth's name, printed class placing information) must be presented to local 4-H staff upon return to the county to maintain eligibility for the Minnesota State Fair 4-H livestock shows.
10. 4-H youth that have been awarded a 4-H State Fair general project trip through the local 4-H qualifying show must keep their designated trip project on the county fairgrounds until the official release time to remain eligible for the 4-H State Fair trip.
11. The University of Minnesota, Chippewa County 4-H Leaders Council or County Extension Office **will not** assume responsibility for articles lost, stolen or broken at the State Fair or damaged in transit to or from the State Fair.
12. Dates of State Fair events:
 - a. Livestock Encampment: **August 23-27**
 - b. General Encampment: **September 2-4**
 - c. State Llama-Alpaca Show: **August 28-30**
 - d. State Horse Show: **September 13-16**
 - e. State Dog Show :**TBA**
 - f. State Shoot: **September 6-8**

Table of Contents

Animal Science Projects		
• Beef	11-12	
• Dairy	12	
• Goat	13	
• Dog	13-14	
• Horse	14-18	
• Llama/Alpaca	18	
• Poultry	18-19	
• Rabbits	19-20	
• Sheep	20-21	
• Swine	22	
• Livestock Demonstrations	22	
• Livestock Interviews	23	
• Science of Animal Exhibits	23	
General Projects		
• Aerospace	24	
• Agronomy	24-26	
		○ Ag technology, corn, forages, plant & soil science, small grains, soybeans, specialty crops, weeds & pests
• Bicycle	26	
• Child & Family Development	27	
• Citizenship	27	
• Clothing & Textiles	28-29	
• Cloverbuds	29-30	
• Club Activities	30	
• Consumer Ed & Money Management	30	
• Crafts & Fine Arts	31	
• Creative Writing	31	
• Demonstrations	31-32	
		○ Presentations & Speeches, Interactive Demonstrations
• Engineering Design	33	

- Engineering design, engineering design challenge
- [Exploring Animals](#).....33-34
- [Fishing Sports](#).....34
- [Food & Nutrition](#).....34-36
 - Foods, Nutrition, Food Preservation, Food Revue
- [Global Connections](#).....36
- Health & Wellness.....36-37
- [Home Environment](#).....37
- [Horticulture](#).....37-39
 - Flower Gardening, Indoor gardening, Landscape design
- [Industrial Technology](#).....39
 - Metalwork, Woodwork
- [Mechanical Sciences](#).....39
 - Automotive, implement, Rec vehicles, small engine, Tractors, electric
- Natural Resources.....40-42
 - Entomology, geology, Exploring environment, Water resources, forest resources
- [Needle Arts](#).....42
- [Performing Arts](#).....43
- [Pets-Posters & Displays](#).....43-44
 - Dog, Cat, Pets, Pet Show
- [Photography](#).....44-45
 - Digital/film, photo manipulation, Elements of photography
- [Quilting](#).....46
- [Safety](#).....46
- [Science Inquiry](#).....46
- [Self Determined](#).....47
- [Shooting Sports](#).....47
- [Technology](#).....48
 - Aquatic robotics, computer, robotics
- [Vegetables, fruit, & herb gardening](#).....48-50
 - Vegetables, fruit, hers, veg. Gardening box, veg. Plate, veg-largest
- [Vet Science](#).....50
- [Video/Film Making](#).....50-51
- [Wildlife/Biology Management](#).....51-52
- [Youth Development](#).....52

ANIMAL SCIENCE PROJECTS

BEEF

Premiums: Blue \$9.00, Red \$8.00, White \$7.00

- All market beef and dairy steers must be identified by February 15.
- Commercial heifers and cow/calf projects must be tagged with a Minnesota 4-H ear tag by May 16th (Calves born after May 16 must be tagged by County Fair and identified on affidavit.)
- Registered heifers and cow/calf projects must be identified by an ear tattoo that is recorded and matches the tattoo number on the registration paper. (Calves must be tattooed by County Fair.)
- Calves may be shown as a part of a cow/calf pair, and as an individual calf.
- **Bull calves will be allowed, but only in the cow/calf project.**
- Again in 2024, prospect calves will be shown by weight & by Prospect heifers, beef steers, dairy steer calf, and dairy adventure calves, (not birth dates), same as State Fair. Calves will compete for an overall and reserve champion prospect calf.
- Steers will be weighed when entered and divided into equal weight classes. All breeds are shown together, however, at the State Fair, beef steers will be shown in breed classes.
- County Fair Beef Show will be shown in this order:
 - Cloverbud Beef
 - Cow/calf
 - Prospect calves (dairy steers calves, dairy adventure, beef steers, heifers) split by weight within sex
 - breeding heifer (by BD, youngest to oldest)
 - Dairy Steers

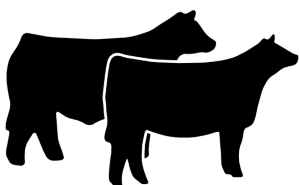
- Market Beef
- Sr Showmanship,
- Jr. Showmanship

Birth Dates	
Breeding Spring Calf	Jan 1 - April 30, 2024
Breeding Fall Calf	Sept 1 - Dec 31, 2023
Breeding Summer Yearling	May 1- Aug 31, 2023
Breeding Junior Yearling	Jan 1 - April 30, 2023
Breeding Senior Yearling	September 1 - Dec 31, 2022
Cow/Calf (cow/calf pair)	Calf must be born Jan 1, 2024- May 15, 2024
Prospect Market Calf	Jan 1 - April 30, 2024
Beef Steer	Jan 1 - August 31, 2023
Market Heifer	
Dairy Steer	

Cloverbud Beef

Premiums: Award of Merit Ribbon & \$2.00 premium

- Cloverbud Beef: Cloverbud may show any beef animal (except bulls) (adult/responsible person must handle and lead the animal at all times.)



Breeding Heifer

All breeding heifers shown at the county fair will be shown by age, not breed or registration status.

- Registered - All Breeds, must have a tattoo matching their registration paper.
 - Registered breeding heifers shown at State Fair must have original registration papers at State Fair. Use the following Classes, with the Divisions (breeds) and birth dates above, to indicate the age of your animal(s):
 - Spring Calf
 - Junior Yearling
 - Fall Calf
 - Senior Yearling
 - Summer Yearling
 -
- Any heifer that is not registered with a breed association (commercial) must have a 4-H tag

Requirements: Beef heifer ownership ID forms and/or lease agreements must be on file in the Extension 4-H Office by May 15th of the current year.

Cow and Calf Pair

- Cow/Calf pair

Requirements: Cow/calf pair: both cow and calf will be shown. Leasing agreements must accompany exhibits in all lots for leased animals. For State Fair eligibility, commercial cows & calves must have a 4-H ear tag; registered cows and calves must have an ear tattoo. Bull calves are allowed in cow/calf pairs.

Prospect Calf

- Heifer Calf
- Steer Calf
- Dairy Steer Calf
- Dairy Beef Adventure Calf

Requirements: Prospect calves must be ID'd with a 4-H ear tag by May 15th, but do not have to be from a cow/calf project. At the State Fair, calves will be weighed and shown in weight classes. There are no dairy steer calf classes at the state fair.

Market Beef

- Market Steer
- Market Heifer

Requirements: Recommended weights for State Fair; minimum 1,000 pounds; maximum weight is 1,500 pounds for market beef, 1,600 for dairy beef. Market animals exceeding the maximum weight will place no higher than a blue ribbon and will not be eligible for the State Fair.

Dairy Steer

- Dairy Steer (purebred and crossbred)

Requirements:

- Recommended minimum weight for dairy market steers at State Fair is 1,000 pounds; recommended maximum weight is 1,600 pounds. Market animals exceeding the maximum weight will not be purple ribbon eligible, or the State Fair.
- Dairy steers must be 100% of one of the following Dairy Breeds to be accepted in the State Fair dairy steer purebred show.
- Crossbred Dairy Steers must be at least 50% from the acceptable breeds listed for the Pure Breed Dairy Steer division, with the balance being from any other beef or dairy breed; however, the steers must show adequate dairy steer characteristics, as determined by the screening committee. Exhibitors should be prepared to identify the breeds of their crossbred dairy steer.
- Dairy Steers showing permanent teeth may be shown, but at the State Fair, they can place no higher than a red ribbon and they will not be eligible for State Fair or auction.

DAIRY

Exhibiting Class	Birth Dates
Calf	Spring: March 1, 2023 to May 31, 2024 Winter: Dec 1, 2022 – Feb 28, 2024 Fall: Sept 1 to Nov 30, 2023
Yearling	Summer Junior: June 1 – Aug 31, 2023 Spring Junior: March 1– May 31, 2023 Winter Senior: Dec 1, 2021 – Feb 28, 2023 Fall Senior: Sep 1–Nov 20, 2022
Two Year Old	Junior: March 1, 2021 to Aug 31, 2022 Senior: Sep 1, 2020– Feb 29, 2022
Advanced	3 Year Old: Sept 1, 2019 – Aug 31, 2021 4 Year Old: Sept 1, 2018 – Aug 31, 2020 Aged: Before Sept 1, 2019 Dry Cow of any age

Cloverbud Dairy

Premiums: Award of Merit Ribbon & \$2.00 premium

- Cloverbud Dairy

Cloverbud may show any dairy animal (except bulls)

(adult/responsible person must handle and lead the animal at all times.)

Dairy There will be no breed specific classes shown at the county fair.

GOAT

Goats must be identified by May 15th with the exception of Jr. Doe Kids, which can be identified up until July 1 or fair entry deadline, whatever comes first. Dairy Goats must be tattooed with a unique ID in the ear or tail web. Dairy goats can be tattooed after five days of age. Market Goats must be identified with a 4-H ear tag. All goats need a USDA scrapie tattoo or tag. For information or questions about the USDA scrapie identification program, contact the Minnesota Board of Animal Health (651-201-6809).

Requirements:

- State Fair market goats: minimum/40 lbs, but not to exceed a maximum/110 lbs, by State Fair.
- For safety reasons, all market goats must be dehorned/disbudded. Re-growth must not exceed 1 inch. **Only breeds that are recognized by the American Dairy Goat Association will be eligible for the State Fair for dairy goats. Pygmy goats (all breeds) are classed as meat goats.**

Cloverbud Goat

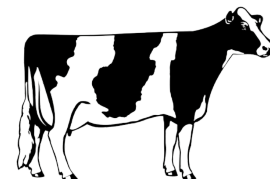
Premiums: Award of Merit Ribbon & \$2.00 premium

Premiums: Blue \$9.00, Red \$8.00, White \$7.00

- Holstein - Registered & Grade
- Colored Breeds, Registered & Grade

Use the following Classes, with the Divisions (breeds) and birth dates above, to indicate the age of your project animal(s):

- Spring calf (non state fair eligible)
- Winter calf
- Fall calf
- Summer Junior Yearling



- Spring Junior Yearling
- Winter Senior Yearling
- Fall Senior Yearling
- Junior 2-yr old
- Senior 2-yr old
- Three year old cow
- Four year old cow
- Aged Cow, five years and older
- Dry Cow

Requirements:

- Senior Yearlings that have calved must compete in the two-year-old cow class.
- Advanced classes must show a complete butterfat record for 305 days

Cloverbud may show any goat (except bucks)

(adult/responsible person must handle and lead the animal at all times).

Exhibiting Class	Birth Dates
Dairy Jr Doe Kid	April 1 – June 30 2024
Dairy Sr Doe Kid	Jan 1 – Mar 31 2024
Dairy Dry Yearling	Jan 1–Dec 31 2023 never kidded
Dairy Milking Yearling	Jan1–Dec 31 2023
Dairy Doe	Two year old; born 2022
	3-4 yr olds; born 2020-2021
	5 + yr olds; born before 2020
Meat or Dairy Market Goat	Dec 1, 2023 to April 30, 2024
Meat Sr Yearling Doe	Dec 1, 2022– Feb 28, 2023
Meat Jr Yearling Doe	March 1, 2023 – May 31, 2023
Meat Fall Yearling Doe	June 1, 2023 – Nov 30, 2023
Meat Sr Doe Kid	Dec 1, 2023 – Feb. 28. 2024
Meat Jr Doe Kid	Mar 1, 2024– May 31, 2024

Dairy Goat

Premiums: Blue \$7.00, Red \$6.00, White \$5.00

- Junior Doe Kid Combined (Purebred, Recorded & Unrecorded)
- Senior Doe Kid Combined (Purebred, Recorded & Unrecorded)
- Dry Yearling Doe Combined (Purebred, Recorded & Unrecorded)
- Milking Yearling Doe Combined (Purebred, Recorded & Unrecorded)
- Milking Two Year Old Doe Combined (Purebred, Recorded & Unrecorded)
- Milking Doe - Three or Four Years Old Combined (Purebred, Recorded & Unrecorded)
- Milking Doe - Five Years and Older Combined (Purebred, Recorded & Unrecorded)

Meat Goat

- Meat Market Goat-wether or doe, no bucks
- Dairy Market Goat-wether no bucks
- Meat Goat Jr Breeding Doe Kid
- Meat Goat Sr. Breeding Kid Doe
- Meat Goat Yearling Breeding Doe, registered or grade (never kidded)

DOG- Dog Show August 10th- Swift County Fairgrounds-Appleton

Premiums: Blue \$6.00, Red \$5.00, White \$4.00

Requirements:

- A dog may be shown in the dog show or the pet show, not both!
- 4-H'ers shall exhibit in the lot corresponding to the training they have received. Additional information can be found in the Minnesota 4-H Agility, Obedience and Showmanship rules and guidelines (three separate publications) available on the MN 4-H dog project website z.umn.edu/mn4hdogproject
- All dogs must have proper rabies, distemper, hepatitis, leptospirosis, parinfluenza and parvovirus (DHLPP) vaccination, and health certificates before they will be allowed to show. **Animal ownership/health certificate forms are due in the Extension Office by May 15th.**

The MN Board of Animal Health requires dogs over 6 months of age to have current Rabies vaccinations. Please have your veterinarian document on your form whether your vaccination is current for 1, 2 or 3 years by filling in the "date expires" blank. Additionally, the Minnesota 4-H Dog Project requires that dogs be vaccinated yearly for Distemper, Hepatitis, Leptospirosis, Parinfluenza, and Parvovirus (DHLPP), by a licensed, practicing vet. For Regional and State 4-H Dog Shows, all vaccinations must be current through November 1. Animal ownership/health certificate forms are due in the Extension Office by May 17th.

All 4-Hers receiving blue ribbons at the County Fair and have completed 3rd grade are eligible to participate in the State Dog Show.

Cloverbud Dog

Premiums: Award of Merit Ribbon & \$2.00 premium

Cloverbud may show any dog during obedience **(Adult/responsible person must handle and lead the animal at all times.**

Dog Agility

- Beginner
- Elementary
- Intermediate
- Senior
- Advanced
- Limited
- Pre-Agility

Agility Rules: In order to begin taking 4-H agility classes, a dog/handler team must have:

- achieved a minimum obedience score of 170 or higher at a county or state 4-H dog show
- or lost fewer than 30 points in a sub-novice class at a kennel club show
- or must have completed 2 years of obedience training

Dog Jumpers

- Jumpers I
- Jumpers II
- Jumpers III

Jumpers Rules: Agility rules apply. This is a timed jump obstacle course.

Dog Showmanship

- **Novice:** 4-H members who have never earned a blue ribbon at the county or state show level.
 - Novice Jr
 - Novice Sr
- **Open:** 4-H members who have earned a blue ribbon at county or state show level in Novice. Because showmanship is based on the 4-Hers ability, they may not drop back to novice if they use a new dog for showmanship
 - Open Jr
 - Open Sr
- **Excellent**



Dog Rally

- Rally - Pre-Novice
- Rally - Novice
- Rally - Pre- Advance
- Rally - Advance
- Rally - Excellent
- Rally - Veterans
- Rally - Foundation

Dog Obedience

- Beginner A
- Beginner B
- Graduate Beginner
- Novice

- Graduate Novice
- Pre-Open
- Foundation Class
- Beginner
- Graduate Open
- Pre-Utility
- Utility
- Four Dog Team
- Four Dog Team ALTERNATE
- Open
- Brace
- Veterans

HORSE

Premiums: Blue \$5.00; Red \$4.00; White \$3.00

Requirements:

All horses must have a negative Equine Infectious Anemia (Coggins) test within 12 months prior to the opening date of the exhibition. The test is not required for suckling foals accompanying a negative dam. ID forms due in the Extension Office May 15th.

All 4-H exhibitors are required to keep one horse at the County Fair, unless you have a veterinarian's order stating that the horse cannot stay. Take appropriate measures to prepare your horse for being stalled at the fair. Depending on the number of exhibitors, you may bring more than one competing horse if there is room (games, pleasure, training). Horses may be turned out in the turnout pen or arena for 20 minutes maximum and only use the arena if others aren't riding. You must keep your stall clean during the fair and make sure your horse is properly exercised, fed, and watered. Remember to properly warm your horse up and cool down before putting it back in the stall to avoid colic.

You are responsible for knowing the MN 4-H Horse Program Rule Book which is posted on the internet at: z.umn.edu/4HHorseProject. Copies are also available at the Extension Office.

NOTE, during the horse show, all exhibitors must have two exhibitor tags, one tag attached to the saddle pad on each side.

4-Hers may share a horse, but only one 4-Her may accumulate points on the horse (two kids cannot earn a trip to the state horse show or win a buckle with the same horse). You must declare who is earning the points ahead of time.

You may compete in two different divisions on the two different days. (Example- you may ride in Advanced Performance on Tuesday and Games (not Advanced) on Thursday, or vice versa). You may also compete in Novice Performance, but then compete in Games because you want to try some lope, but aren't ready to compete at the lope in the performance classes.

Arena Practices are held on Monday nights (6-8 p.m.) beginning in June until the fair. This is not a requirement but 4-H'ers are encouraged to attend to get help and improve their skills.

Horse Helmet Policy: All 4-Hers participating in any 4-H sponsored mounted activity are required to wear properly fastened ASTM/SEI approved headgear. Helmet use is required when mounted. Policy extends to 4-H volunteers working with youth in a 4-H volunteer role during mounted activities.

Age Divisions

Use the following guidelines to enter the horse classes:

- Advanced Performance (AP): 6th-13th Grade qualifying for State Horse Show Trips
- Performance (P): 3rd- 5th grade not qualifying for State Horse Show trips
- Novice Class: Open to any age 4-H'er in their 1st, 2nd, or 3rd year in the horse project. After 3 years the rider may remain a novice at the discretion of the parents and leaders. Once shown in the qualifying or non qualifying division you may not show in the Novice classes. In the novice performance classes the exhibitor will only

show the horse at a walk and trot. In the novice games classes riders can walk, trot, or lope at their discretion

Written Test

A written test for each division will be given on the Thursday cleanup night at the fairgrounds. It is not a requirement to take the test but it counts as a class in the high point divisions. If you want to take the test and cannot make it that night, contact the extension office to arrange a time to go there and take it BEFORE Sunday. If an exhibitor is showing in two different divisions (5th grader riding in intermediate performance vs. novice because he wants to lope, but junior games, he should take either the highest level -one intermediate test to count towards both divisions or 1 intermediate test to count towards int. Perf. division and one junior test to count towards the junior games division). Tests increase in difficulty as the level increases. Points for tests are as any other class (High point person on test in each division gets 6 points, 2nd highest score gets 5 points, etc.). When two people tie, those points get added and divided by 2. (Ex. 2 tie for highest score- $6+5=11 / 2=5.5$ points for each person). Then the next score would be awarded 4 points.

Showmanship Classes

All horses shown at the County Fair must enter a showmanship class. If you have a performance horse, enter the age appropriate performance showmanship class. If you have a games horse, enter the age appropriate games showmanship class. If you have both a performance and a games horse, then the performance horse is shown in the appropriate performance showmanship class and the games horse is shown in the appropriate games showmanship class.

Point System

The following is the Point System for High Point Pleasure and High point Games in each Division & State Horse Show. Points are awarded as follows: 1st place- 6 points, 2nd place- 5 points, 3rd place- 4 points, 4th place 3pts, 5th place 2pts, 6th place 1pt.

Red and white placings do not get points (If only 2 blues are given in a class, only 2 people earn points in that class. A blue must be received to get points)

A 4-Her may ride more than one horse, but points cannot be combined. Exhibitors can earn points in the performance and games division. (One can ride the same horse and earn points in the performance division and games division, or ride separate horses, but points between the two divisions will not be added together) Points will only be awarded in State Horse Show classes. Egg & Spoon is exhibition only – no premium

State Horse Show:

State Horse Show Points may only be accumulated on one horse. A 4-Her may ride more than one horse, but points cannot be combined. Points will only be awarded in State Horse Show Classes. State Fair trips will be given in this order:

1. High Point Games
2. 2nd High Point Games
3. 3rd High Point Games
4. High Point Pleasure
5. 2nd High Point Pleasure
6. 3rd High Point Pleasure
7. Next High Point and down

Ties

Tiebreaker goes to the person with the most 1sts, 2nds, 3rds, etc. (Ex. 2 people with same number of points and same number of 1sts, but one has more 2nds than other)

Games Penalties:Knocking an obstacle down is a 3-second penalty for each obstacle knocked down. Again, no points for red ribbons.

State Horse Show

Games showmanship classes will NOT count as points towards a state games trip, but is a requirement to be eligible for a state games trip. Pleasure showmanship classes WILL count points towards the pleasure state trip. Horses may be shown in the games showmanship at halter and performance showmanship at halter. Flag bearer at the State Horse Show will be awarded to the oldest state horse show trip earners and passed down according to age if he or she declines.

- The State Horse show trail trips will be awarded to the highest scoring exhibitors in the trail class among the state horse show trip winners. The judge will be told before trail class to ensure consistency.
- Entry fees and transportation costs are paid by 4-Her (one \$20 scholarship is available for one state competition by 4-H Leaders Council.)

Classes included in state horse show points:

- Performance: showmanship, english pleasure (hunt or saddle seat), english equitation, western pleasure, western horsemanship, and trail
- Games: poles, key, jump 8, barrels (Games showmanship required but not counted in points) Entry fees and transportation costs are paid by 4-Her (**one** \$20 scholarship is available for **one** state competition by 4-H Leaders Council.)
- Riders must choose between Hunt Seat and Saddle Seat
- Egg & Spoon is exhibition only – no premium.

High Point Divisions

Novice divisions will receive an award but are not eligible to sell ribbons at auction as champions or reserve, as this is a beginner walk/trot division. They may sell a blue ribbon earned in a class other than showmanship. If you ride in novice games, you may not lope. If you lope, you will earn a red. Novice is a beginner walk-trot division. No loping.

Buckles will be awarded for high point division winners (Advanced Performance, Performance, Advanced Games, Games, Training). To be considered champion and reserve, exhibitor must receive a blue ribbon in the division.

Blue Ribbon Auction champions and reserve champions are only the buckle winners and those who were reserve behind the buckle winners. Blue ribbons must be earned to be champion or reserve.

Note: High point winners for state horse show are not necessarily the same as high point division winners because of which classes are included in calculations. For the award, exhibitors must complete the following:

Required Classes in Performance Division

Written Test
Showmanship at Halter
Western Horsemanship

Optional Classes in Performance

Western or Ranch Pleasure
Trail
English Pleasure
English Equitation

Required Classes for Games

Written Test
Showmanship at Halter
Barrels

Optional Classes for Games

Pole Weaving

Key Race
Jumping Figure 8
Egg and Spoon

Required Classes in Novice

Written Test
Showmanship
Horsemanship

Optional Classes in Novice

Trail
Pleasure

Challenged Rider

The classes the individual will ride will be determined depending on their ability and skill level.

- Horse – Assisted: Flat Class-Western or English Equitation, walk, trot with volunteer/mentors as needed.
- Horse – Assisted: Obstacle Game Class, Key Hole pattern, walk, trot with volunteer/mentors as needed.
- Horse – Unassisted: Flat Class-Western or English Equitation, walk, trot, unassisted (spotter requested).
- Horse – Unassisted: Obstacle Game Class, Key Hole pattern, walk, trot, unassisted (spotter requested)

Cloverbud Horse

Premiums: award of merit ribbon and \$2.00 premium

Adult/responsible person must handle and lead the animal at all times. Cloverbud animals are not housed at the county fair, unless another 4-Her is showing the animal. All horses used for Cloverbuds must attend one arena practice to be approved as a safe horse for the child. If you cannot attend a practice, talk to a leader.

Horse Training

Horse Training steps 1-6: Member shows horse in some stage of training or handling horse such as proper loading, unloading, cleaning of hooves, etc. at 4-H horse show on Tuesday. **Must be checked off by Kathy Johnson or another horse leader 1 week before the horse show to exhibit.**

Horse Related

Premiums: Blue \$3.00; Red \$2.50; White \$2.00

- Grade 10+
- Grades 6-9

- Grades 3-5

Requirement:

- Must be enrolled in the **Horse project** to exhibit in this division
- Exhibits may be a model, poster, scrapbook, essay, and/or article showing or explaining what a 4-H member has made, done, or learned in the project. Suggestions include saddle rack, blanket holder, horse health care kit, etc. **Exhibits judged with building exhibits on Sunday, July 28th**
- Exhibits are conference judged with the exhibitor present.

Horseless Horse

Premiums: Blue \$3.00; Red \$2.50; White \$2.00

Showmanship at Halter is judged during the Horse Show and is based on 4-Her. Must attend 2 practices with horse in order to show at the County Fair Horse Show.

Requirement:

- For 4-Hers who do not own a horse but wish to learn more about the species. Suggested topics are consumer issues, breeds, careers, or creative topics of the 4-Her's choice. Exhibits may be a model, poster, scrapbook, essay, and/or article. Exhibits should show or explain something the 4-H member has made, done, or learned in the project.
- This exhibit area is for youth who do not own or lease a horse. Youth should exhibit in this category if they participate in the horseless horse program with a mentor horse. If they do own or lease their own horse, they may exhibit the same style exhibit in the Horse Related area. **Exhibits judged with building exhibits on Sunday, July 28th**
- Exhibits are conference judged with the exhibitor present.

HORSELESS HORSE SKILLS CLASS

Horse - Horseless Horse Level 1, Grades 6+

Horse - Horseless Horse Level 1, Grades 3-5

Horse - Horseless Horse Level 2, Grades 6+

Horse - Horseless Horse Level 2, Grades 3-5

Requirement

- Youth will complete a level in the horseless horse booklet prior to the show. The booklet will include answering knowledge questions and learning hands-on skills. An example of a knowledge question would be to list 4 breeds of horses and describe their uses. An example of a skill to demonstrate would describe and demonstrate how to properly back a horse on the halter 4 steps.
- The booklet must be signed prior to the show by a Horseless Horse Volunteer, Mentor or 4-H Extension Staff attesting to

that the youth has completed the booklet, can complete the skills and is prepared for the judging experience.

- Youth can only test and exhibit one level per year.
- They will use a mentor's horse in the ring. The horse will be used to aid in answering the judges questions and demonstrating skills.
- Youth will demonstrate and interview one-on-one with the judge, on exhibitor at a time.
- The judging will be a combination of demonstrating these skills and answering interview questions from the judge. The judge will select a number of skills and knowledge based questions related to the booklet (not all of them).

4-H Horse Show- Performance, Cloverbuds, Training Tuesday, July 30th - 8a.m.
Horse training
Pleasure Showmanship at Halter - AP
Pleasure Showmanship at Halter - P
Pleasure Showmanship at Halter Novice
English Pleasure Hunt Seat/Saddle Seat AP
English Pleasure Hunt Seat/Saddle Seat P
English Pleasure Novice Walk/Trot
English Equitation, Hunt Seat/Saddle Seat AP
English Equitation, Hunt Seat/Saddle Seat P
English Equitation Novice Walk/Trot
Ranch Pleasure - AP
Ranch Pleasure - P
Western Pleasure - AP
Western Pleasure - P
Western Pleasure - Novice Walk/Trot
Western Horsemanship - AP
Western Horsemanship - P

Western Horsemanship – Novice Walk/Trot
Trail Class – AP
Trail Class – P
Novice Trail Class
Horseless Showmanship at Halter is judged during the Horse Show and is based on 4-Her. Must attend 2 practices with horse in order to show at County Fair show.
4-H Horse Show- Games Classes Thursday, August 1st - 11 a.m.
Cloverbud Showmanship, show any horse at halter
Games Showmanship – AG
Games Showmanship – G
Games Showmanship – Novice

Cloverbud Lead Line
Cloverbud Barrel Race
Pole Weaving- AG
Pole Weaving - G
Pole Weaving - Novice
Key Race - AG
Key Race - G
Key Race - Novice
Jumping Figure 8 - AG
Jumping Figure 8 - G
Jumping Figure 8 - Novice
Barrel Race - AG
Barrel Race - G
Barrel Race - Novice
Egg & Spoon *** - AG
Egg & Spoon *** - G
Egg & Spoon *** - Novice

LLAMA-ALPACA

Premiums: Blue \$7.00, Red \$6.00, White \$5.00

- Llama-alpaca costume Grades 3-5 (Exhibitor must be on foot)
- Llama-alpaca costume Grades 6-8 (Exhibitor must be on foot)
- Llama-alpaca costume Grades 9+ (Exhibitor must be on foot)
- Llama-alpaca showmanship Grades 3-5
- Llama-alpaca showmanship Grades 6-8
- Llama-alpaca showmanship Grades 9+
- Llama-alpaca obstacle course/public relations Grades 3-5
- Llama-alpaca obstacle course/public relations Grades 6-8
- Llama-alpaca obstacle course/public relations Grades 9+

Birthdates: 4-H Llama projects must be born prior to January 1, 2024.

Gender: No sexually intact male above 18 months is eligible for exhibition. All castrated males born prior to

January 1, 2024 are eligible for exhibition. All females born prior to January 1, 2024 are eligible for exhibition. No companion animals (no buddies and no nursing mother's allowed)

Cloverbud Llama-Alpaca

Premiums: Award of Merit Ribbon & \$2.00 premium

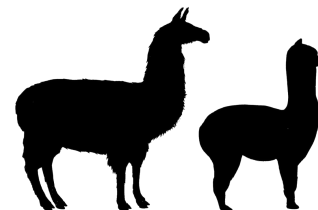
Cloverbud may show any llama or alpaca at Lama-Alpaca Show Friday August 2nd , 6:00 p.m.

(adult/responsible person must handle and lead the animal at all times)

Llama-Alpaca Fleece

Premiums: \$7.00 Blue; \$6.00 Red; \$5.00 White

- Grade 9+
- Grades 6-8
- Grades 3-5



POULTRY

Premiums: Blue \$4.00; Red \$3.50; White \$3.00

(Originating from Minnesota). **No health certificates required for waterfowl or pigeons.**

1. Poultry exhibited must be of this year's hatch (except advanced classes). All except waterfowl and pigeons must have a health certificate and must be identified by a numbered leg band.
2. Chickens and turkeys: negative pullorum-typhoid test within 90 days, or record of origin from a flock tested negative within the last 12 months.
3. Turkeys must be tested negative or originate directly from parent stock that is tested negative for **Salmonella typhimurium**, **Mycoplasma gallisepticum**, and **Mycoplasma synoviae**.

Breeding classes are judged on breed characteristics using the American Standard of Perfection as a guide (copy available in the Extension Office). For **State Fair**, birds must be from the **same flock** as county fair winners, but may select different birds for State Fair than those exhibited at County Fair. Rule of thumb suggestions for State Fair hatch dates: breeding poultry and waterfowl – January 1 or later; market poultry **except** market chickens – March 1 or later; egg production chickens (**white or brown egg layers**) – March 1 or later; market chickens show best at 8 – 10 weeks of age. 4-Hers may need two hatches of market chickens to accommodate an early County Fair and a late August State Fair.

Cloverbud Poultry

Premiums: award of merit ribbon and \$2 premium

Cloverbud may show any poultry. (**Adult/responsible person must handle the animal at all times**).

Chickens

- Market pen of two males or two females
- Breeding pen of one male & two females
- Bantam Breeding pen of one male & two females
- Egg production pen of two pullets, white egg layers
- Egg production pen of two pullets, brown egg layers

Doves

- Purebred breeding pair



Ducks

- Market pen of two males or two females
- Breeding pen of one male & two females
- Bantam Breeding pen of one male & two females

Geese

- Market pen of two males or two females
- Breeding pen of one male & two females

Guinea

Note: only Pearls, Whites and lavender breeds can be shown

- Market pen of two males or two females - same breed
- Breeding pen of one male & two females - same breed

Pigeons

Ownership deadline May 15th

- Utility, 1 Breeding Pair
- Utility, 1 Young bird Male or Female, 1 young bird, this year band
- Fancy, 1 Breeding Pair
- Fancy, Young bird Male or Female, 1 young bird, this year band
- Flying, 1 Breeding Pair
- Flying, Young bird Male or Female, 1 young bird, this year band

Turkeys - Domestic only

- Market pen of two males or two females
- Breeding pen of one male & two females

Show & Hobby Poultry

- Show and hobby – birds that do not fit into any of the other classes. May be pheasants, partridge, quail, wild ducks other than mallards, etc. Must be at least 2 months old at the County Fair. Only one bird is exhibited. (No State Fair trip)

Poultry Poster

Educational or promotional posters may be selected to advance to the state fair. See state fair poster requirements under poultry information.

- Grade 9+
- Grades 6 – 8
- Grades 3 – 5



RABBITS

Premiums: Blue \$4.00; Red \$3.50; White \$3.00

All rabbits will be judged using the American Standard of Perfection as a guide. Rabbits must be permanently tattooed in the left ear for ID purposes. Limit to ten rabbits per member. In an effort to conform with State

Fair classes, rabbits will be shown by small breeds and large breeds.

Cloverbud Rabbit

Premiums: Award of merit ribbon and \$2 premium

Cloverbud may show any rabbit (**adult/responsible person must handle the animal at all times**).

Small Breeds- 4 Class

- Sr Purebred Buck over 6 months
- Sr Purebred Doe over 6 months
- Jr Purebred Buck under 6 months
- Jr Purebred Doe under 6 months
- Crossbred Buck/Doe under 6 months (no State Fair trip)
- Crossbred Buck/Doe over 6 months (no State Fair trip)

4 Class (small) rabbit breeds include Dutch, Florida White, Holland Lop, Jersey Wooly, Mini Lop, Mini Rex, Netherland Dwarf, Polish, Rex, American Fuzzy Lop, American Sable, Dwarf Hotot, English Angora, French Angora, Satin Angora, Belgian Hare, Britannia Petite, Standard Chinchilla, English Spot, Harlequin, Havana, Himalayan, Lilac, Rhinelander, Silver, Silver Marten, Thrinta and Tan

Large Breeds- 6 Class

- Senior Purebred Buck over 8 months of age
- Senior Purebred Doe over 8 months of age
- Intermediate Purebred Buck 6-8 months of age
- Intermediate Purebred Doe 6-8 months of age
- Junior Purebred Buck under 6 months of age
- Junior Purebred Doe under 6 months of age
- Crossbred Bucks & Does over 8 months of age (no State Fair trip on crossbreds)
- Crossbred Bucks & Does under 8 months of age (no State Fair trip on crossbreds)

6 Class (large) rabbit breeds include New Zealand, Satin, American Giant Angora, Belgian Hare, Bevern, Californian, Champagne D'argent, Checkered Giant, American Chinchilla, Giant Chinchilla, Cinnamon,

Crème Dargent, Flemish Giant, French Lop, Hotot, English Lop, Palomino and Silver Fox.

Requirements:

- All breeds recognized by the American Rabbit Breeders Association are eligible. Rabbits will be judged according to ARBA standards.
- Each rabbit must be permanently tattooed in the left ear for identification purposes.
- Jr. does and bucks born in March and April, and up to June 1 are eligible for State Fair. Rabbits have jr & sr classes, determined by over or under 6 mos. of age. Classes are determined by age of rabbit on show date. Thus it is possible that a rabbit could be a Jr. at county and a Sr. at state fair.

Running Breeds

- Senior Purebred Buck over 8 months of age
- Senior Purebred Doe over 8 months of age
- Intermediate Purebred Buck 6-8 months of age
- Intermediate Purebred Doe 6-8 months of age
- Junior Purebred Buck under 6 months of age
- Junior Purebred Doe under 6 months of age
- Crossbred Bucks & Does over 8 months of age (no State Fair trip on crossbreds)
- Crossbred Bucks & Does under 8 months of age (no State Fair trip on crossbreds)

Requirements:

Breeding Rabbit requirements apply to Running Breeds

Running Breeds include Checkered Giant, English Spot, Rhinelander and Tan

Market Rabbit

- Single fryer, 3 1/2 to 5 1/2 pounds, not over 70 days old
- Pen of three fryers, 3 1/2 to 5 1/2 pounds, not over 70 days old

Rabbit Poster

- Grades 9+
- Grades 6-8



SHEEP

All market lambs and breeding ewes must be tagged with a **Minnesota 4-H ear tag AND a USDA scrapie tag by May 15th**. When recording the scrapies tag, official premise number and the individual numbers need to be listed (Ex. MN12345-0100). Due to packer expectations, premise IDs are required at State Fair for sheep. Contact the MN Board of Animal Health at

651-201-6816 to get a premise ID number if you don't already have one and to get tags.

Exhibiting Class	Birth Dates
Commercial & Registered Breeding Ewe Lamb	January Feb March Of current year
Commercial & Registered	Over 1 yr and under 2 yrs of age and must not show evidence of 4 permanent incisors

Breeding Yearling Ewe	
Commercial & Registered Fall Ewe Lamb	Born between Sept 1-December 31 of current year
Market Lamb (wether or ewe)	On or after December 1 of previous year

Cloverbud Lamb Lead Premiums: Award of Merit Ribbon & \$2.00 premium

Cloverbuds may participate in Lamb Lead

Lamb Lead

Premiums: \$7.00 blue; \$6.00 red; \$5.00 white

Intermediates and juniors will be combined if there are less than 8 participants in the junior and intermediate categories. There must be a minimum of 3 participants in each class.

- Grades 9+ (senior)
- Grades 6-8 (intermediate)
- Grades 3-5 (junior)

Requirements:

- Lamb lead exhibitors must groom and train their own sheep and must wear a garment made from at least 60% wool. Garment is defined as a piece of clothing covering a main part of your body (not socks or accessories). Outfit doesn't have to be made by the 4-Her; it can be purchased or made by someone else.
- Exhibitors will be judged based on project knowledge, poise, their outfit, and their lamb.
 - Classes may be combined depending on number of entrants

Guidelines:

1. If you do not raise sheep but would like to be in lamb lead, contact someone who raises sheep and ask if you could use one of their lambs. Market lambs or ewe lambs may be used. No rams.
2. **The lamb must have a halter and be led by the 4-Her** in the show ring.

The judges will have knowledge in the area of fashion, clothing, and sheep. During the judging, the judges observe the 4-Hers, complete a checklist, and interview the contestants. **Any 4-Her who wins a State Fair trip in the sheep project may participate in the State 4-H Lamb Lead.**

NOTE: 4-Hers who participate in Lamb Lead at the State Fair will receive a \$30 cash award, provided by the Minnesota Livestock Breeders' Association (MLBA). These payments are made in October.

4-Hers must be grade eligible to participate at the State Fair.

Cloverbud Fleece

Premiums: Award of Merit Ribbon & \$2.00 premium

Cloverbud may exhibit any fleece

Fleece

Premiums: \$7.00 Blue; \$6.00 Red; \$5.00 White

- Fleece

Requirements:

Fleece must be no less than 3" in length, but no more than 13 months of growth. Any 4-Her 6th grade and up receiving a blue ribbon at the County Fair is eligible to show their fleece at the State Fair; no housing will be provided! Each member showing fleece is responsible for transporting the exhibit to the 4-H Building at County Fair.

Cloverbud Sheep Premiums: Award of Merit Ribbon & \$2.00 premium

Cloverbud may show any sheep (except rams)

Breeding Ewes

Premiums: \$7.00 blue; \$6.00 red; \$5.00 white

Classes will be separated if there are 4 or more; if less, classes will be combined.

- Yearling Ewe born on or after January 1 of previous year – All Breeds;
- January Ewe Lamb born in January of current year – All Breeds
- February Ewe Lamb born in February of current year – All Breeds
- March Ewe Lamb born in March of current year – All Breeds
- Fall ewe lamb- Must be born between Sep 1-Dec 31 of previous year

Requirements:

- **Must have scrapies tag and ear tag or tattoo.** Breeding ewe classes may be split into smaller classes based on Black, White or Speckle ewes and Slick, Fitted or Commercial.

Market Lamb

Premiums: Blue \$9.00; Red \$8.00; White \$7.00

Classes will be divided into the following if there are 4 or more for each class; if less, classes will be combined and divided solely by weight. If shown only by weight, classes will be divided after all



market lambs are weighed. 4-H Staff and/or the Sheep superintendent will make class breaks.

- Market Lamb- Black Face
- Market Lamb- White Face
- Market Lamb- Speckled Face

Requirements:-

- Lambs must be born **on or after December 1, 2023**. All market lambs will

SWINE

Premiums: Blue \$9.00; Red \$8.00; White \$7.00

Swine must be individually identified and must: (1) have a negative official pseudorabies test conducted within 30 days prior to the opening date of the exhibition; or (2) originate directly from a qualified pseudorabies-negative herd; or (3) originate (born) directly from a Stage IV or V county or area. All 50 states are currently pseudorabies Stage V (Pseudorabies Free Status). There will be **no** rate of gain for swine. **PREMISE ID NUMBERS WILL BE REQUIRED FOR ALL SWINE SHOWN AT STATE FAIR. Contact the MN Board of Animal Health at 651-201-6816 and numbers can be assigned in minutes over the phone. Market gilts will be shown at State Fair.**

Exhibiting Division	Exhibiting Class	Birth Dates
Purebred Gilt	January	Born in January of current year
	February	Born in February of current year
	March	Born in March of current year
Crossbred Gilt	January	Born in January of current year
	February	Born in February of current year
	March	Born in March of current year
Purebred Market Barrow		On or after January 1; recommended Feb 1 or after
Crossbred Market Barrow		On or after January 1; recommended Feb 1 or after
Market Gilt		On or after January 1; recommended Feb 1 or after

Cloverbud Swine

Premiums: Award of Merit Ribbon & \$2.00 premium

Cloverbud may show any hog (except boars)
(adult/responsible person must handle the

be weighed on entry day and will be shown in class by weight. Wethers and market ewes will be shown in the same class.

- Recommended minimum weight for State Fair is 105 pounds; required maximum weight is 170 pound

Breeding Gilt

There must be a minimum of 4 purebred breeding gilts to have a purebred division. All final decisions regarding breeding gilt divisions will be made by swine superintendents.

- Purebred breeding gilts born January of current year
- Purebred breeding gilts born February of current year
- Purebred breeding gilts born March of current year
- Crossbred breeding gilts born January of current year
- Crossbred breeding gilts born February of current year
- Crossbred breeding gilts born March of current year

Market Swine

- Purebred Market Barrow
- Crossbred Market Barrow
- Market Gilt
- Pen of 3 hogs, from 1 exhibitor from previously shown classes.

Requirements:

- Recommended minimum weight for State Fair is 220 pounds; maximum State Fair weight is **300 pounds**. Market Barrows and market gilts weighing less than 220 pounds will show in their own class "Super Lightweights" and those 301 pounds and over will show in their own class "Super Heavyweights" and will be eligible for blue red or white ribbons and are not eligible for champions at State Fair.
- Must be farrowed on or after January 1 of the current year.
- 4-Her may bring up to 6 swine (2 per pen)
- All barrows and gilts must be identified with ear notches in both ears and MN 4-H ear tags

LIVESTOCK DEMONSTRATIONS

Premiums: Blue \$7.00; Red \$6.00; White \$5.00 All livestock demonstrators who receive a blue ribbon and have completed 6th grade may present a 4-H livestock demonstration **during** 4-H Livestock Weekend at the MN State Fair, and receive \$30 cash from the MN Livestock Breeders Association. ***The champion livestock demonstrator will receive a bonus state fair trip and can be passed down the line up.*** Livestock demonstrations will be given at the Chippewa County Fair on Saturday August 3rd at 2:00 p.m. in the show arena.

- | | | | |
|--------------------------|---------------------------|---------------------------|--------------------------|
| - Grades 9+ - Individual | - Grades 3-5 - Individual | - Grades 6-8 - Individual | - Cloverbud - Individual |
| - Grades 9+ - Team | - Grades 3-5 - Team | - Grades 6-8 - Team | - Cloverbud - Team |

LIVESTOCK INTERVIEWS

Premiums: Blue \$7.00; Red \$6.00; White \$5.00

All livestock interviews will be held on Sunday of General Project Judging. Interviews will be held in the Show arena with your respected judge per age division. Interview sign ups will be in Fair Entry along with all other exhibits. **NOT A SIGN UP GENIUS THIS YEAR.**

The purpose of the Animal Science Interview is to increase the communication skills of the 4-H members and to encourage them to learn more about their projects beyond the show experience.

This summer, livestock interviews will be held on **July 28th from 3-6pm.** Youth will have approximately 15 minutes to interview with a judge about their livestock projects. You'll have 10

minutes for your interview and 5 minutes of talking about your individual animal projects (If applicable). **There is NOT a specific sign up time for your interview, you just need to show up between 3-6PM the day of judging.**

These interviews will not be species specific, but will include a large range of general livestock questions. Youth will still have the opportunity to share their knowledge about their livestock species with the judge. Our focus will be on knowledge of the project area and building interview skills.

- Junior Division Grades completed 3-5
- Intermediate Division, Grades completed 6-8
- Senior Division, Grades completed 9+

SCIENCE OF ANIMALS EDUCATIONAL EXHIBITS

Premiums: Blue \$7.00; Red \$6.00; White \$5.00

Health

- | | |
|--------------------------------|----------------------------|
| - Health Exhibit – Beef | - Health Exhibit – Poultry |
| - Health Exhibit – Dairy | - Health Exhibit – Rabbits |
| - Health Exhibit – Goat Dairy | - Health Exhibit – Sheep |
| - Health Exhibit – Goat Market | - Health Exhibit – Swine |

Breeding

- | | |
|----------------------------------|------------------------------|
| - Breeding Exhibit – Beef | - Breeding Exhibit – Poultry |
| - Breeding Exhibit – Dairy | - Breeding Exhibit – Rabbits |
| - Breeding Exhibit – Goat Dairy | - Breeding Exhibit – Sheep |
| - Breeding Exhibit – Goat Market | - Breeding Exhibit – Swine |

Production

- | | |
|------------------------------------|--------------------------------|
| - Production Exhibit – Beef | - Production Exhibit – Poultry |
| - Production Exhibit – Dairy | - Production Exhibit – Rabbits |
| - Production Exhibit – Goat Dairy | - Production Exhibit – Sheep |
| - Production Exhibit – Goat Market | - Production Exhibit – Swine |

Zoonotics

- | | |
|-----------------------------------|-------------------------------|
| - Zoonotics Exhibit – Beef | - Zoonotics Exhibit – Poultry |
| - Zoonotics Exhibit – Dairy | - Zoonotics Exhibit – Rabbits |
| - Zoonotics Exhibit – Goat Dairy | - Zoonotics Exhibit – Sheep |
| - Zoonotics Exhibit – Goat Market | - Zoonotics Exhibit – Swine |

Other

- | | |
|-------------------------|---------------------------|
| - Other Exhibit – Beef | - Other Exhibit – Poultry |
| - Other Exhibit – Dairy | - Other Exhibit – Rabbits |

- Other Exhibit – Goat Dairy
- Other Exhibit – Goat Market
- Other Exhibit – Sheep
- Other Exhibit – Swine

Exhibit Suggestions:

- Items constructed (such as feeding systems or show equipment) or science exhibits focusing on one of the four divisions listed above.
 - These projects may be enhanced with 3-dimensional displays, posters or notebooks
- State Fair trips will be available. Exhibits will be judged during Livestock Weekend and 4-Hers may exhibit both an animal and a Science of Animal Educational Exhibit. NOTE: Llama-Alpaca, Poultry and Rabbit promotional and educational posters are an exhibit item at the state level and may be entered as a poster in each respective area

GENERAL 4-H PROJECTS

AEROSPACE

Project Description

Share what you've learned about the latest in aerospace technology including airplanes, rockets, helicopters, drones, balloons, etc. Aerospace includes any objects that fly within the Earth's atmosphere and outer space.

Premiums: Blue \$3.00; Red \$2.50; White \$2.00

- Grade 9+
- Grade 6-8
- Grade 3-5

Requirements:

- Models or other project object(s) can be used during the judging process.
- Flyable models should be ready for flight (do not include fuel or engines); recovery systems should be in place and operative.
- Members should be familiar with safety codes in the 4-H curriculum or that accompany the kit.

Exhibit Suggestions:

- Build a model (rocket, airplane, satellite) and identify the parts.
- Explain the science of how airplanes fly.
- Explain how the model rocket flies.
- Identify parts of a hot air balloon and how they work.
- Design or build your own rocket or airplane and explain how it works
- Discover and identify the basic parts of a helicopter and how they work.
- Make and demonstrate a hang glider.
- Demonstrate a drone and how it is used.
- Research UFOs and share your findings.
- Compare and contrast different types of kites (flat, box, parafoil, etc).
- Discuss the pros and cons of different types of flight (airplane vs helicopter vs jet, et

AGRONOMY

Agriculture Technology

Premiums: Blue \$3.00; Red \$2.50; White \$2.00

- Grade 9+
- Grade 6-8
- Grade 3-5

Exhibit Suggestions:

- A display or presentation highlighting the technology used in agriculture such as GPS tools, drone use, implement technology, yield mapping, genetic engineering, seed traits, agricultural chemistry, precision agriculture, on-farm research, side by side trials, etc.

Corn

Judging on Wednesday July 31st from 10 A.M.

Premiums: Blue \$3.00; Red \$2.50; White \$2.00

- Grade 9+
- Grade 6-8
- Grade 3-5

Requirements:

- Crop must be grown on a farm with which you have a relationship with the producer and have interviewed the producer about the growing process. Crops must have been grown in the current or previous growing season.
- Include an information card listing the variety, soil and agronomy information of the crop if exhibit is a crop sample.



- Be familiar with crop input costs and the growing process.

Exhibit Suggestions:

- A two-quart jar or clear container (equalling 8 cups) of shelled corn.
- A display of ears of dent corn, consisting of 6-10 ears of corn of the same variety.
- A bundle of corn stalks, consisting of stalks of the same variety.
- An educational display illustrating corn's plant reproduction, different types of corn, plant growth factors, plant characteristics, plant part identification, growing and using plants, plant growth and food production, examples of a plant disease, etc.
- A display using a 4-H project kit (a corn stalk growing out of a five-gallon pail).

Forages

Judging on Wednesday July 31st from 10 A.M.

Premiums: Blue \$3.00; Red \$2.50; White \$2.00

- Grade 9+
- Grade 6-8
- Grade 3-5

Requirements:

- Crop must be grown on a farm with which you have a relationship with the producer and have interviewed the producer about the growing process. Crops must have been grown in the current or previous growing season.
- Include an information card listing the variety if the exhibit is a crop sample.
- Sample could be in a clear plastic container or large clear plastic bag.
- Be familiar with crop input costs and the growing process.

Exhibit Suggestions:

- A dried sample, in a 3-5 inch tied, dried bundle or in a sample 4-6 inch slab of a bale of a forage. Forages include alfalfa, warm season grasses, cool season grasses, sorghum, native grasses, silage, etc. It is recommended that a sample analysis of your forage accompanies the sample. (Kits from DHIA are available at the Extension Office, <http://www.stearnsdhalab.com/>)
- An educational display illustrating one of the following ideas: nutritional analysis of feedstuff, plant reproduction, plant growth factors, plant characteristics, growing and using plants, plant growth and food production, examples of a plant disease, etc, of forages.

- A display using a 4-H project kit (grass grown in a container showing how forages are grown).

Plant and Soil Science

Judging on Wednesday July 31st From 10A.M.

Premiums: Blue \$3.00; Red \$2.50; White \$2.00

- Grade 9+
- Grade 6-8
- Grade 3-5

Exhibit Suggestions:

- Take soil samples and compare soil analysis (soil analysis can be done by obtaining a kit at the Extension office).
- An exhibit showing different varieties of forages, cover crops. (seed or plant)
- A plant life cycle exhibit highlighting the growth of a plant from seed to a mature plant.
- A display using a 4-H project kit (using a root viewer to show the soil and root structure of plants).

Small Grains

Judging on Wednesday July 31st from 10 A.M.

Premiums: Blue \$3.00; Red \$2.50; White \$2.00

- Grade 9+
- Grade 6-8
- Grade 3-5

Requirements:

- Crop must be grown on a farm with which you have a relationship with the producer and have interviewed the producer about the growing process. Crops must have been grown in the current or previous growing season.
- Include an information card listing the variety if the exhibit is a crop sample.
- Be familiar with crop input costs and the growing process.

Exhibit Suggestions:

- A two-quart jar or clear container (equalling 8 cups) of any small grain variety. This could include wheat, oats, rye, barley, etc.
- A dried sample, in a 3-5 inch tied, dried bundle of the same variety.
- An educational display illustrating one of the following ideas: plant reproduction, plant growth factors, plant characteristics, usage of plants, plant growth and food production, examples of a plant disease, etc. of a small grain.

Soybeans

Judging on Wednesday July 31st from 10 A.M.

Premiums: Blue \$3.00; Red \$2.50; White \$2.00

- Grade 9+
- Grade 6-8
- Grade 3-5

Requirements:

- Crop must be grown on a farm with which you have a relationship with the producer and have interviewed the producer about the growing process. Crop must have been grown in the current or previous growing season.
- Include an information card listing the variety if the exhibit is a crop sample.
- Be familiar with crop input costs and the growing process.



Exhibit Suggestions:

- A two-quart jar or clear container (equalling 8 cups) of soybeans.
- A dried sample, in a 3-5 inch tied, dried bundle of the same variety.
- An educational display illustrating plant reproduction, plant growth factors, plant characteristics, usage of plants or seeds, plant growth and food production, examples of a plant disease, etc. of a soybean.
- A display using a 4-H project kit (growing soybeans in a five-gallon bucket).

Specialty Crops

Premiums: Blue \$3.00; Red \$2.50; White \$2.00

- Grade 9+
- Grade 6-8
- Grade 3-5

Requirements:

- Crop must be grown on a farm with which you have a relationship with the producer and have interviewed the producer about the growing process. Crops must have been grown in the current or previous growing season.
- Include an information card listing the variety if the exhibit is a crop sample.
- Be familiar with crop input costs and the growing process.

Exhibit Suggestions:

- An adequate sample of a specialty crop such as sugar beets, edible beans, black beans, kidney beans, field produced sweet corn, peas, carrots, potatoes, popcorn, etc. Dried products should be in a two-quart jar or clear container (equalling 8 cups); fresh products on a plate or flat box.
- A dried sample, in a 3-5 inch tied, dried bundle of the same variety.
- An educational display illustrating one of the following ideas: plant reproduction, plant growth factors, plant characteristics, usage of plants, plant growth and food production, examples of a plant disease, etc. of a specialty crop.

Weeds and Pests

Premiums: Blue \$3.00; Red \$2.50; White \$2.00

- Grade 9+
- Grade 6-8
- Grade 3-5

Exhibit Suggestions:

- A display or presentation highlighting any current pests in agriculture or horticulture. Could include their life cycle, prevention or treatment, their impact on the plant, etc.
- A weed display or book identifying different weeds in agriculture or horticulture. Highlight one weed in depth, a class of weeds (such as grasses or broad leaves) or a collection of different weeds. Could include identification details, life cycle, weed control, the impact on crop production, etc.
- A display, book or poster identifying insects that are harmful to crops or other plants.
- Note: Do not include live or dried noxious weed samples in your display (check current listing at <https://www.mda.state.mn.us/plants/pestmanagement/weedcontrol/noxiouslist.aspx>). If you are bringing in a sample of weed seeds, put it in a sealed container

BICYCLE

Premiums: Blue \$3.00; Red \$2.50; White \$2.00

- Grade 9+
- Grade 6-8
- Grade 3-5

Exhibit Suggestions:

- Exhibit showing built, restored, reconditioned or rebuilt bikes.
- Display showing types of bikes, parts of a bike, maintenance, traffic rules, bicycling hazards, city/county/regional bike or active

transportation plans, how to wear a helmet, equipment used to teach others about bike repair or first aid, etc.

- Documentation (such as slideshow, notebook, picture book, poster or film) of a bike rodeo or

other bike event you helped with, or research on some other aspect of bicycling that was presented to a class, committee or service club

CHILD & FAMILY DEVELOPMENT

Project Description:

Share what you've learned about being self-reliant and responsible, how to handle emergencies and develop home-alone skills. Child & Family Development includes home safety, age-appropriate toys, nutritious snacks for children and how to create a poem, story or game.



Premiums: Blue \$3.00; Red \$2.50; White \$2.00

- Grade 9+
- Grade 6-8
- Grade 3-5

Requirements:

- Exhibitors should be prepared to discuss, in conference judging, the age and other characteristics of the child for whom the exhibit is intended and how the exhibit contributes to the child's growth, development, and well-being.
- If the exhibit is designed to be interactive with children, the item should be used with children before exhibiting and a photograph of this activity should accompany the exhibit. Signs of use will not detract from the placing of the exhibit.

Exhibit Suggestions:

- Toy, game, puzzle, puppets, art/craft materials, etc., made from new or recycled/throw-away material.
- Babysitting kit/travel kit/rainy day kit.
- Original book, story, poem, song, play, cookbook, audio or video tape and narrative, activity book, safety manual for children.
- Scrapbook, photographs, items, reports, video, etc., on family heritage with description of what was learned about self and family.
- A creatively developed program and/or item used for or with a person with differing abilities (i.e. learning difficulties, physically impaired, etc.).
- Display exploring different types of families (nuclear, blended, single parent, childless, foster, etc).
- An educational display explaining foster care/foster families in Minnesota
- Display exploring resources for children alone at home (i.e. activities, games, kits).
- An educational display about youth mental health. Explore strategies to help youth cope with stress, anxiety, etc. with busy bags, sensory bottles/activities, conversation tips, etc.
- Display sharing your experience job shadowing an early childhood education provider, child care provider or another youth worker.
- An educational display with resources available to lower income families (i.e. WIC, Food Shelf, etc).

CITIZENSHIP

Premiums: Blue \$3.00; Red \$2.50; White \$2.00

- Grade 9+
- Grade 6-8
- Grade 3-5

Exhibit Suggestions:

- Highlight of community projects and/or citizenship activities which you or your club completed under your leadership. Include plans of action as well as the impact of each.
- An educational display illustrating the description of a service project, which may



include: how you identified the need in your community, developed a project to address the need, carried out the project, and reflected on the results.

- An educational display illustrating how you've researched, reflected, and learned more about yourself, your family, and your friends.
- An educational display illustrating how you've researched, reflected on, and learned more about your community, its history, and how to be a good neighbor.
- An educational display illustrating how you've developed a tour of a local community, government or community agency; learned

how government functions; and learned about police, fire protection, health, sanitation, safety, and tourism in your community.

- A display on different parts of the world, highlighting their cities, culture, history and more.
- A display explaining how you organized and led tours in your towns, communities, courthouse or historic places.

CLOTHING AND TEXTILES

Premiums: Blue \$4.00; Red \$3.50; White \$3.00

Clothing & Textiles exhibits should be finished, clean and pressed for exhibition. Exhibits can be used before showing, but should be cleaned before exhibiting. Garments and sewn non-garments should be appropriate for the skill level and experience of the exhibitor.

All clothing and textiles exhibits including Fashion Revue (with the exception of quilts which are judged at the County Fair) will be judged **Tuesday, July 16th at 5:00 pm at the Chippewa County Courthouse, Assembly Room, Montevideo.**

Clothes You Make

- Grade 9+. Grade 6-8, Grade 3-5

Clothes You Buy

- Grade 9+. Grade 6-8, Grade 3-5

Clothes You Recycle

- Grade 9+. Grade 6-8, Grade 3-5

Non-Garment

- Grade 9+. Grade 6-8, Grade 3-5

Fashion Revue Clothes You Make

- Grade 9+. Grade 6-8, Grade 3-5

Fashion Revue Clothes You Buy

- Grade 9+. Grade 6-8, Grade 3-5

Fashion Revue Clothes You Recycle

- Grade 9+. Grade 6-8, Grade 3-5



Constructed Clothing

Exhibit Suggestions:

- Include an information tag listing: pattern company name and number or inspirational photo for design, fiber content of fabric and care instructions.
- Constructed garment such as a blouse, shirt, top, skirt, pants, sweatshirt, jumper, dress, outerwear, etc.
- Constructed garment utilizing a fabric or technique new to the exhibitor, such as synthetic suede, active sportswear, micro-fibers, satin, etc.
- Using tailoring techniques to construct a garment
- Wearable art that can be included as part of the constructed garment.

- An educational display on how the government works or the functions of various government agencies.
- A display on community organizations, agencies or service departments like fire departments, police departments, sanitation, tourism, etc.
- Complete a service project and create a display of what you did and why you did it.
 - Educational poster or display on a clothing or textiles subject of your choice. Examples: career in industry, difference in fabric, how fabric is made, evolution of clothing, cost comparison, clothing selection, care of fabric, etc
 - Garment mended, repaired or recycled, with color photo of original garment and explanation of steps used.

Upcycled Clothing

Exhibit Suggestions:

- Significant alterations to a garment. Examples: oversized t-shirt made into a cinched t-shirt dress, alternating the style of the garment, updating an old prom dress to make it current, etc.
- Wearable art that can be added to purchased garments.

Requirements:

- An upcycled garment is one that is constructed from a previously worn garment that has been updated/alterd in a way to produce a new garment.
- Colored photo of original garment and colored photo of new garment

Purchased Clothing

Exhibit Suggestions:

- Additional information that could be included in 8 ½" x 11" binder:
 - Cost per wear
 - Cost comparison (construction vs. purchased)
 - Inventory of wardrobe (not including undergarments)
 - Educational facts about fabric in garment(s)
 - Additional photos showing ways it can be used in existing wardrobe
 - Accessories/shoes worn
 - Any other educational information not listed above
- Purchased garments such as a blouse, shirt, top, skirt, pants, sweatshirt, jumper, dress, outerwear, etc.

- Pre-used garments not altered. Examples: thrift store, garage sale, hand-me-down, etc.

Requirements:

- The purchased garment or outfit must be accompanied by an 8-1/2" x 11" binder with the following information:
 - Colored photo of member wearing the garment. Label photo with name, county, and color of complexion, hair and eyes.
 - Cost of garment and explanation of why garment was purchased
 - Fabric content and care of garment
 - Examples of ways it will be used in existing wardrobe
 - Sale receipt and tags, if available

Sewn Non-Garment

Exhibit Suggestions:

- Non-clothing sewn, constructed item. Examples: simple home or clothing accessory item such as a pillow, apron, book bag, belt, placemat, gym bag, sewing kit, etc.
- Non-clothing article using a pattern or your own idea.

Requirements:

- Include an information tag listing: pattern company/kit name or source, fiber content of fabric and care instructions.

Fashion Revue Constructed Clothing

Fashion Revue Purchased Clothing

Fashion Revue Upcycled Clothing

Fashion Revue Constructed or Purchased or Upcycled Exhibit Suggestions:

- Judging is on the overall completed look which includes the outfit, accessories and overall appearance

Fashion Revue Constructed or Purchased or Upcycled Requirements:

- Participants may model any clothing they have constructed, purchased or upcycled as a part of their 4-H clothing project.
- Garments are required to be modeled during conference judging and fashion show.

Note: At State Fair, clothing exhibitors can use the same garment to participate in both fashion revue and the corresponding clothing & textiles project in the same year. Example: Constructed fashion revue exhibits can be judged in the constructed clothing area (or vice versa).

Cloverbuds Clothing and Textiles

Premiums: Award of Merit Ribbon & \$2.00 premium

- Cloverbud Clothes You Make item
- Cloverbud Fashion Revue Clothes You Make
- Cloverbud Clothes You Buy item
- Cloverbud Fashion Revue Clothes You Buy
- Cloverbud Clothes You Recycle item
- Cloverbud Fashion Revue Clothes You Recycle

CLOVERBUDS

Premiums: Award of Merit Ribbon & \$2.00 premium

Cloverbuds are limited to bring 10 items or less

Exhibit Suggestions:

- We encourage cloverbuds to review the project area requirements in the general project and animal science project areas to learn more about what would be required of their project when they reach 3rd grade. (e.g. Photography- pictures require a mat and cannot be framed, recipe card with food project)
- General exhibits could include: 3 cut flowers in a vase, a potted plant, vegetable or fruit art, a nutritious food snack (include a recipe card), a

simple item you made for your home like a pillow, placemat, decoration, etc., rock collection, paper bag puppet, 4 interesting objects of nature, tree leaf collection, display of insects, simple craft item, or anything else you can think of. (Think about how your exhibit will be displayed at the fair, review the general project requirements within the specific project area for ideas for displaying or hanging your exhibits, poster or display sizes, etc.)

- Animal Science posters could include how you care for your animal, animal breeds, fun things your animal can do, what your animal eats, etc.
- Cloverbud [Animal Science Project](#)- see *individual Animal Science Projects areas for requirements*

- Cloverbud General 4-H Projects- *see individual General 4-H Project area for requirements*
- Cloverbud [Livestock Demonstrations](#) and [Demonstrations](#)- *see Livestock Demonstrations and Demonstrations for requirements*
- Cloverbud [Clothing & Textiles](#)- *See Clothing & Textiles for requirements*

General Requirements:

- Cloverbuds are youth who have completed grades K-2. Cloverbud programs emphasize cooperative rather than competitive experiences—in accordance with our guidelines all cloverbuds will receive a participation ribbon, rather than the blue, red, white or champion ribbon.
- Cloverbud general exhibits can be made at home, at a 4-H or non 4-H meeting or event.

- Cloverbud animal science areas include live animals or posters in the following Beef, Dairy, Goat, Horse, Llama & Alpaca, Poultry, Rabbit, Sheep & Swine. Animal-related project areas must follow the [MN 4-H Cloverbud policy](#).
- Review the [Cloverbud Information Sheet](#) to ensure the exhibit is developmentally appropriate and follows 4-H cloverbud policies.

- There are no State Fair trips in this division..

CLUB ACTIVITIES

It is your club's responsibility to make sure a club officer (your secretary, treasurer, president, etc.) signs up for these projects.

Club Banner

Premiums: Blue \$3.00; Red \$2.50; White \$2.00

- Club Banner

Two banners will be selected for the State Fair.

Requirement:

- Banner must be 3' x 5' and designed to hang vertically.
- Must be completed and equipped with a dowel (minimum size 3' 8"), ready to hang.
- Banner must be of fabric (no paper) and can be one or two-sided.
- Club name on 3 x 5 card pinned to back. (Any assembly technique can be used.)

Community Pride- Club

Premiums: Blue \$3.00; Red \$2.50; White \$2.00

- Community Pride

Two exhibits will be selected for State Fair, Again in 2023- 4-H members that conference judge with this project at State Fair can take a general exhibit also

Requirements:

- Exhibit may include a three-sided display, video, or other visual method visually highlighting the entire project or certain parts, in a manner which tells positive effects the project had on the community.
- Two club youth who participated in the project may represent the club in conference judging.

Club Scrapbook

Premiums: Blue \$3.00; Red \$2.50; White \$2.00

- Club Scrapbook

Requirement:

- Show and explain your club activities and participation in community and county events.

Club Project

Premiums: Blue \$20.00; Red \$18.00; White \$16.00

- Conservation
- Flower Box (traditional flower container)
- Other (club barrel, trash can, scarecrow, etc)

CONSUMER EDUCATION & MONEY MANAGEMENT

Premiums: Blue \$3.00; Red \$2.50; White \$2.00

- Grade 9+
- Grade 6-8



- Grade 3-5

Project Description:

Share what you've learned about being a good consumer as you explore smart shopping, income and expenses, saving money, credit, and needs vs. wants.

Exhibit Suggestions:

- A budget workbook, income/expenses graphs, impact of supply chains on consumers, savings plans, etc.
- Junior exhibitors: a basic comparison of similar products with different pricing.

CRAFTS AND FINE ARTS

Note: Members enrolled in Creative Arts can exhibit in both Fine Arts and Crafts.

Crafts

Craft or Kit (developed from someone else's ideas, can be replicated or modified)

Premiums: Blue \$3.00; Red \$2.50; White \$2.00

- Grade 9+
- Grade 6-8
- Grade 3-5

Requirement:

- Each exhibit will be evaluated on its individual merit as a craft/kit.
- Emphasis is on the creative process and the implementation of design elements and principles. The craft/kit exhibit develops from someone else's ideas and can be easily replicated, modified and repeated by others.
- All projects need to be presented in a finished manner.

Exhibit Suggestions:

- For a beginner, choose a project that teaches new techniques. For advanced, choose a project requiring masterful craftsmanship.
- Work directly from a kit, diamond painting, social media influenced/inspired, LEGO kits, model replicas, no sew/tie blankets, ceramic casts, paint by number, etc.

- Intermediate exhibitors: include additional aspects of products other than just price
- Senior exhibitors: compare numerous components (nutritional value, cost per ounce, fabric content, longevity, etc)

Fine Arts

Original Fine Art, Emphasis on the creative process, 4-Her develops own ideas or imagination.

Premiums: Blue \$3.00; Red \$2.50; White \$2.00

- Grade 9+
- Grade 6-8
- Grade 3-5

Requirement:

- Each exhibit will be evaluated on its individual merit as an original fine art.
- Emphasis is on the creative process and the implementation of design elements and principles. The fine art exhibit should show proof that it is developed from the 4-Hers own ideas and imagination.
- All art objects must be appropriately finished. For state fair eligible: exhibits must be ready for hanging, displaying, etc. (i.e. wire or hooks on paintings, bases for 3 dimensional work, etc.)

Exhibit Suggestions:

- For a beginner, choose a project that teaches new techniques. For advanced, choose a project requiring mastery.
- Original work (no kits) in drawing, painting, sculpture, paint pouring, textiles, pottery, jewelry making, fiber art, quilling, etc

CREATIVE WRITING

Exhibits could include written short stories, poems, essays, play scripts, speeches, memoirs, social media posts, articles, blog posts, graphic novels, etc.

Exhibit Suggestions:

- For a beginner, choose a project that teaches new techniques. For advanced, choose a project requiring mastery.
- Original work (no kits) in drawing, painting, sculpture, paint pouring, textiles, pottery, jewelry making, fiber art, quilling, etc

Requirement:

- Each exhibit will be evaluated on its individual merit as an original fine art.
- Emphasis is on the creative process and the implementation of design elements and principles. The fine art exhibit should show proof that it is developed from the 4-Hers own ideas and imagination.
- All art objects must be appropriately finished. For state fair eligible: exhibits must be ready for hanging, displaying, etc. (i.e. wire or hooks on paintings, bases for 3 dimensional work, etc.)



DEMONSTRATIONS

Premiums: Blue \$7.00; Red \$6.00; White \$5.00

The 4-H demonstration program provides youth with the opportunity to gain self-confidence in speaking before an audience, earn a State Fair trip, and earn points for club of the year awards. As of last year, **all youth will receive a \$30 cash award for completing a public presentation (both livestock and non-livestock) at the Minnesota State Fair!**

Demonstration Night will be held Tuesday, July 16th at 5:00 pm at the Chippewa County Courthouse, Assembly Room, Montevideo. for all but livestock demonstrations (which are given at the County Fair.)

Registrations due online June 28th Make sure to enter the titles of your demonstrations.

- Grades 9+ Individual -Grades 9+ - Team
- Grades 3-5 - Individual - Grades 3-5 Team
- Grades 6-8 Individual -Grades 6-8 Team
- Cloverbud Individual, -Cloverbud Team

Presentations and Speeches

Premiums: Blue \$7.00; Red \$6.00; White \$5.00

- Grades 9+ Individual -Grades 9+ - Team
- Grades 3-5 - Individual - Grades 3-5 Team
- Grades 6-8 Individual -Grades 6-8 Team
- Cloverbud Individual, -Cloverbud Team

Interactive Demonstrations

Premiums: Blue \$7.00; Red \$6.00; White \$5.00

- Grades 9+ Individual -Grades 9+ - Team
- Grades 3-5 - Individual - Grades 3-5 Team
- Grades 6-8 Individual -Grades 6-8 Team
- Cloverbud Individual, -Cloverbud Team

Requirements:

- **Illustrated Presentations** may be related to any project the member is enrolled in or any area of interest or expertise the 4-Her has. Presentations may be an individual or a two-person team. Individual presentations shall not exceed 15 minutes in length and team presentations should not exceed 25 minutes in length.
- **Demonstrations** are oral presentations demonstrating hands-on steps required to accomplish a task or process. This most often includes the use of physical objects and actual doing or showing. For example, a demonstration could involve using bedding plants, potting soil and related items to

demonstrate planting a flower pot. At the end of the Demonstration there should be something of a "finished product".

Demonstrations may also include the use of supporting visuals like posters, charts or overhead transparencies. Visuals can include technology based options like presentation software (i.e. MS PowerPoint). Focus of the demonstration should be on the "doing", not the supporting visuals.

- **Presentations & Speeches** are an oral presentation that presents an idea, concept, viewpoint or experience in an educational or informative format. For example, an Illustrated Presentation could be a report on leadership lessons learned through a trip to Washington DC or an educational presentation that explores sustainable energy options. Illustrated Presentations most often consist of interaction with supporting visuals like posters or charts. Supporting visuals can include technology based options like presentation software (i.e. MS PowerPoint). Supporting visuals may include tangible items, but generally little or no activity takes place with the item.
- **Interactive Demonstrations** Presentations are interactive, continuous presentations that are approximately 45 - 50 minutes in length. Topics selected for a Youth in Action demonstration may be related to a project in which the member is enrolled or to any other area of interest or expertise the member has. Involving the audience in the process is the primary focus of Youth in Action and constitutes a major portion of the evaluation results.
- **Presentation Software** (i.e. MS PowerPoint) may be used for both Demonstrations and Illustrated Talks. If Presentation Software is used in a Demonstration, the presentation software should supplement the Demonstration (hands-on demonstrating should still be the basis of the entry). If used for an Illustrated Talk, the presentation software can be the basis for the entire talk; however the member must interact with the presentation and information - not just step to the side and let the presentation play.
- If presentation software is utilized, judging will include the effective use of the software.
- Special NOTE: if presentation software is utilized, Extension will provide a laptop computer, PowerPoint software and projector. It is the 4-Her's responsibility to make sure their software or program is compatible with Extension equipment.

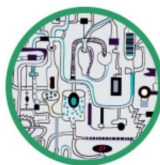
ENGINEERING DESIGN

Premiums: Blue \$3.00; Red \$2.50; White \$2.00

See the [Engineering Design project page](#) for more information.

Engineering design projects address a problem by developing a solution that successfully solves the problem. Important in engineering design projects is identification of the problem being solved and testing and improving the solution.

- Grade 9+
- Grade 6-8
- Grade 3-5



Requirement:

- Include description of the problem/challenge being solved
- Include description of how a design process was used to solve problem
- Description(s) can be verbal or written

Exhibit Suggestions:

4-H members should use the 4-H Engineering Design Process: Ask, Imagine, Plan, Create and Improve as they work on their Engineering Design project. Examples:

- Using everyday items to build a simple machine to complete a simple task
- Using everyday items to create a product to solve a real life situation
- Using LEGOS to create and test different types of bridge designs
- Engineering a bridge – using everyday items create a bridge to sustain 5 pounds of weight
- Engineering a roller coaster – Use KNEX or other materials to engineer and create a roller coaster
- Engineering a catapult/trebuchet – use everyday items to create a machine to launch a marshmallow a minimum of 3 feet
- Engineering a wind turbine to solve a problem (example: using the wind energy to lift a bucket)

Engineering Design Challenge Level 1 & 2

- Engineering Design Challenge Team Member

- Level 1 - grades 3 -8 (suggested)
- Level 2 grades 7 - 12 (suggested)

Each member (regardless of age) needs to register in one of these levels.

An Engineering Design Challenge machine is based on a Rube Goldberg-type machine, an overly complex contraption designed to accomplish a simple task. The best machines use a variety of everyday items to create a series of chain-reaction steps to accomplish a simple task. In the project, youth employ engineering, physics, humor, and storytelling to create their machine. This program requires a team of at least 3 and no more than 10 youth members. This program requires a team of at least 3 and no more than 10 youth members.

Requirements:

1. Please refer to the [Engineering Design Challenge Level 1 and 2 Handbooks](#) (z.umn.edu/4hedc) for complete details.
2. Teams of at least 3 youth
3. Machine must complete a minimum of 10 steps
4. Machine must operate in 2 minutes or less
5. Exhibit physical size limited to 6 ft x 6 ft x 6 ft
6. Describe how an engineering design process was used to complete the project.
7. Provide a journal record illustrating the process of completing the project.

Exhibit Suggestions:

- Engineering Design Challenge machine itself
- Display, binder, poster, video illustrating the process of the doing the activity/project

Note: The Engineering Design Challenge showcase event occurs outside of the State Fair (typically before the State Fair). In 2022, teams can choose to participate in person or virtually. Teams choosing to participate virtually will need to submit a video of their machine prior to virtual judging. Please refer to the [Engineering Design Challenge Level 1 and 2 Handbooks](#) (z.umn.edu/4hedc) for complete details

EXPLORING ANIMALS

Intended as an introductory project area for youth who have limited experience with livestock/animal

science. This area is a pathway to more in-depth study of the animal.

Premiums: Blue \$3.00; Red \$2.50; White \$2.00

- Grade 9+

- Grade 6-8
- Grade 3-5

Requirements:

- This area is for 4-H'ers who wish to learn more about a given species. Animal ownership is not required.
- Exploring Animals include: Beef, Dairy, Dairy Goat, Meat Goat, Llama/Alpaca, Poultry, Rabbit, Sheep or Swine.
- Youth interested in cats, dogs, horses or other domesticated pets (guinea pigs, snakes, rats,

etc) should see appropriate sections of the premium book.

Exhibit Suggestions:

- An educational exhibit to show or explain something 4-H'er made, did, learned, or may explore consumer issues, breeds or careers.
- Poster, journal, video, 3 ring binder of animals being explored.
- Explore basic care & handling, basic feeding, basic housing, animal welfare & ethics, etc.

FISHING SPORTS

Premiums: Blue \$3.00; Red \$2.50; White \$2.00

- Grade 9+
- Grade 6-8
- Grade 3-5

Exhibit Suggestions:

- Fish identification. Describe the habitat and food needs of selected fish; develop a panel display explaining the life history of a fish; create a model or exhibit identifying the parts of a fish.
- Fishing Knots: Identify how and where each knot is used; fishing equipment which is made or repaired such as lures, fishing rods and reels, ice fishing rig, or other fishing equipment
- Safety practices and techniques that are related to fishing (& ice fishing) or boating
- Examples of how water quality affects the fish ecosystem

- Create a display or diagram of Aquatic habitats, invasive species
- Tactics to fish for various species of fish, techniques and equipment used
- Cultural aspects of fishing
- Regional differences across the US/world. (Types of fish, environments, ways to fish, considerations)
- Research commercial fishing for food industry
- Explore career opportunities
- Local Department of Natural Resources fishing regulations

Requirements:

- If any lures or pieces are part of a display, ensure that pieces are secured and hooks are not going to be a safety concern (enclosed).
- Do not include live fish as part of the exhibit.

FOODS AND NUTRITION

Judging on Wednesday July 27th at 10 A.M.

Premiums: Blue \$3.00; Red \$2.50; White \$2.00

- Grade 9+
- Grade 6-8
- Grade 3-5

FOODS

Exhibit Suggestions:

Food items such as:

- Bars & Cookies (no commercial mixes)
- Breads (no commercial mixes)
- Cakes (no commercial mixes)
- Pastries (no commercial mixes)
- Gluten Free Baked Goods
- Homemade Meal
- Other Homemade Food
- Fun with Convenience Foods
- Recipe Adaptation to Improve Nutrition
- Cake/Cupcake & Cookie Decorating
- Food science experiment

- Exhibit showing food and/or kitchen safety.
- Investigate food allergen of your choice
- Display about careers in the food industry

Requirements:

- Exhibit may be food items and/or displays.
- Exhibitors should be prepared to discuss with the judge: recipes, references, information sources, methods, etc., as appropriate to that exhibit.
- Exhibits containing perishable foods, which may be discarded, must include a colored photograph of the food. Print the photo and recipe on an 8 ½" x 11" paper.

Note: If food safety is a concern, judges reserve the right not to taste and/or judge foods items.

NUTRITION

Exhibit Suggestions:

- One serving of nutritious food (vegetable or fruit dish, snack, bread, dairy, etc.). Include

8½ x 11 poster showing nutritional value, recipe, and a photo of the food.

- Study of nutrients needed for yourself or someone else, using the dietary guidelines and MyPlate.
- Make a food or fitness plan for yourself or someone else and show how it relates to nutritional and energy needs. (Example: an athlete on a volleyball team, a teen who doesn't have a lot of time).
- Adapt a recipe(s) to show healthier ingredient choices.
- Study of how physical fitness and/or food choices are related to disease (such as: cancer, heart disease, osteoporosis, diabetes, etc.).
- Study of labels from similar food items, comparing important nutrient content like fat, fiber, and sugar.
- Explore nutrition-related careers

Food Preservation

Judging on Wednesday July 31st at 10A.M.

Premiums: Blue \$3.00; Red \$2.50; White \$2.00

- Grade 9+
- Grade 6-8
- Grade 3-5

Requirements:

- Consult the authorities (University of Minnesota Extension/other state Extension publications, USDA, National Center for Home Food Preservation) and follow the recommendations for the year (or closest to) for all recipes, procedures, and processing times. Recipes from pectin packages, etc. are acceptable.
- All food preservation exhibits must be labeled or have a note card that includes county, name, grade, product, style of pack, processing method (boiling water bath or pressure canner), date, processing time, date processed and source of recipe. Pressure canned items indicate dial or weighted gauge and how many pounds of pressure are used.
- Jars must be heat-tempered clear glass canning jars, not commercial glass jars (i.e. glass mayonnaise jars).
- All jars must be sealed. Jellies and jams must be covered with lids.
- Use pint jars for fruit, vegetables, and fish; one-half pint jars for jams and jellies; 2- 1 pint jars or one quart jar for pickled products.
- No artificial food coloring should be added to entries.
- Dried foods may be stored in glass jars, self-sealing plastic bags or airtight plastic bags.

The quantity of dried foods should be: fruits and vegetables 1/2 cup or more of each, herbs - 1/4 cup of each in whole leaf form, 3 strips of meat (i.e. venison or beef jerky).

- Foods must be preserved within the past year.

Exhibit Suggestions:

- Suggested exhibits include one (1) jar or one (1) bag of product:
 - Vegetables or fruits
 - Jams, jellies, preserves, low-sugar spreads (no frozen)
 - Pickled products (fermented or added acid, including pickles, sauerkraut, relishes, salsa).
 - Meats, poultry and/or fish. (Fish must be in pint jars.) Must be processed in a pressure canner. Note: Preserved fish count toward the limit that can be in your possession.
 - Dried vegetables or dried fruits.
 - Dried herbs.
 - Beef or venison jerky.
- Learn about cottage food producer requirements in Minnesota
- Display about different methods of freezing foods
- Explore commercially available freezer bags to see which produces the best quality
- Display about preserving foods that you've hunted and/or caught
- Research different methods for harvesting and preserving butchered meat
- Make a poster about making freezer jams/jellies
- Research illnesses you can get from improper food preservation
- Teach others about safe canning methods
- Display about canning equipment and its purpose
- Learn about preserving foods in a pressure canner
- Compare current food preservation techniques with those used in the past

Food Review

Judging Tuesday, July 16th at 6:00 pm at the Chippewa Courthouse, Assembly Room, Montevideo.

Premiums: Blue \$7.00; Red \$6.00; White \$5.00

Make sure to enter the titles of your Food Review presentation in FairEntry.

- Grade 9+
- Grade 6-8
- Grade 3-5
- Cloverbud

Exhibit suggestions:

- Exhibitors may bring to the county showcase experience: one item of food from the menu; a place setting which includes dishes, silverware, linens and centerpiece for the course in which food is served.

Requirement:

- The display must be no larger than 30" square.
- Food Review will be judged on food and nutritional knowledge, menu

design/theme, table setting design, and cost information.

- Must include binder, which includes: Cover page, menu, cost, nutritional information, picture of place setting, picture of food, and one or more pictures of you in action preparing your meal. May also include a small poster of the menu, photo of exhibit, etc.
- Note: the judge may or may not taste the food.

GLOBAL CONNECTIONS

Project Description:

Lessons on Global Citizenship are as close by as your local grocery store, library, highway or high school and can be as far away as places like Oslo, Nairobi or Hong Kong! Share what you've learned about exploring countries and learning about their government, history, people and popular cultures or further explore your own culture and traditions. This includes ways you have made a difference in your community and your world with a Global Connections project.

Premiums: Blue \$3.00; Red \$2.50; White \$2.00

- Grade 9+
- Grade 6-8
- Grade 3-5



Exhibit Suggestions:

- Make a poster exploring your own culture. What are the important elements of your culture and how is it different from other cultures?
- Make a display of coins, stamps or postcards from other countries. How are they used? What is the meaning of the images on them?
- Record an oral history interview with someone from another culture living in your community.

- Service learning: Teach English to non-native English speaking people. What did you learn from doing this?
- Make a collection of foreign recipes and prepare them for others. Consider Hmong or Somali cuisine, or another that of another Minnesota group.
- Prepare an exhibit of items, pictures, maps, charts, slides/tapes, drawings, illustrations, writings or displays that depict the heritage of the member's family or community or 4-H history.
- Prepare a display illustrating what you have learned about a country's or U.S. region's geography, economy, agriculture, people, language, housing, culture, music, crafts, clothing, holidays or other aspects.
- Pick a country to study, then look up which one of the fifty U.S. states has a similar population to that country. Create a presentation documenting the similarities and differences between the identified country and the state based on the following topics:
 - Climate and weather
 - Culture and traditions
 - Food and cuisine
 - Language

HEALTH & WELLNESS

Premiums: Blue \$3.00; Red \$2.50; White \$2.00

- Grade 9+
- Grade 6-8
- Grade 3-5

Exhibit Suggestions:

- Research and report on a health issue of your choice.
- Report on a community service project that you conducted or volunteered with that relates

to a health issue or addresses a community need.

- Include objectives, audience, timetable, program description, materials, community support and evaluation.
 - Examples might include food distribution centers, homeless shelters, vaccine clinics, blood drives, community run/walk events such as a 5K,
 - Share the results of a service project you conducted in your

- community to address a health-related need.
 - Make a personal connection with an organization or group working to address health disparities or health inequities in your community (for example, availability and access to safe and affordable housing).
 - Conduct a community health assessment for your county, tribe, city or school. What are they doing well to support people's wellbeing? What challenges have arisen? What solutions are they offering to support the community? What will you do now that you have this information?
 - Research resources that are available to you in your community. Does this provide information useful to you or your peer group? What did you learn and do with the information?
 - Organize a peer support group, conference, a seminar, a workshop, or a chemical-free party. What is your goal in creating this group?
 - Promote health through campaigns, activities, and events centered on specific health issues.
 - Create a health day/week at school or arrange a health topic at your 4-H club meeting.
 - In collaboration with others (school, peers, etc.) develop an "anti-bullying" campaign to address Social Media Health.
 - Create a Day in the Life Timeline to identify how you spend your day
 - Where can you set goals to include more healthy practices such as mindfulness, fitness, movement, more fruits or vegetables, etc.?
 - Share some ways you incorporate self-care and/or mindfulness practices into your daily routines.
 - How do you manage schedules/Stress Management?
 - What steps do you take to ensure you are nourishing your body throughout the day?
 - Create a video or musical production addressing a cause that's connected to health and wellness.
 - Design a model of the human skeleton and label the bones or learn about other organs and systems of the human body
 - How does fitness, motion, or athletics fit into a healthy lifestyle for you
 - Careers in the health science industry
-

HOME ENVIRONMENT

Premiums: Blue \$3.00; Red \$2.50; White \$2.00

- Grade 9+
- Grade 6-8
- Grade 3-5



Requirements:

- Members exhibiting in this project should be prepared to discuss how their exhibit applies to the home, how and where it is used or displayed, and all details of how it was made or selected.
 - They should know about the subject matter of the specific exhibit, the materials used, how and why it was done, costs involved, and alternatives considered
- A photograph and details showing its place in the home environment must accompany exhibits that are items for the home.
- Pictures and wall hangings that are exhibited should be finished.

- Purchased kits are allowed to be used.

Exhibit Suggestions:

- Finished or refinished item, or reupholstered furniture with before and after photos.
- Repaired, restored, remodeled or upcycled item for the home.
- An article remade or reclaimed for the home with a link to the past, including history of use.
- Description, diagrams/photos, samples and cost of a redecorating or remodeling plan showing before and after.
- Item creation for the home - for appeal or for practical use.
- Home organization and functionality (i.e. make a spice rack).
- Environmentally friendly home improvements; assess energy efficiency.

HORTICULTURE

Flower Gardening

Judging on Wednesday July 31st at 10 A.M.

Premiums: Blue \$3.00; Red \$2.50; White \$2.00

- Grade 9+
- Grade 6-8



- Grade 3-5

Requirements:

- Label each container according to kind or variety.
- Outdoor living flowers and plants are to be exhibited in this area (including Outdoor Fairy Gardens)
- Live plant material will be accepted if it can be maintained in a fresh condition with ease.

Exhibit Suggestions:

- When exhibiting cut flowers, we suggest:
 - a. three stems of one variety of annual flower, or
 - b. one stem of a hardy perennial, or
 - c. one stem of summer flowering bulbs, or
 - d. one blossom of a tea rose, or
 - e. one stem of a hardy shrub rose
- Flower bouquet or arrangement on any theme.
- Display of dried flowers with a card explaining the drying method.
- My Flower Garden Exhibit on poster board, not to exceed 22 x 28". Include plan of garden drawn to scale (see Flower Gardening Bulletin, page 3), correct variety name & pictures (or photographs) of the flowers grown. Be prepared to discuss the process from soil preparation to blooming.
- Educational Exhibit showing the principles of propagation or reproduction, nutrition, culture and physiology (how a plant lives and grows).
- A display using a 4-H project kit showing how plants or vegetables absorb color and change their leaf color.

Indoor Gardening

Judging on Wednesday July 31st at 10A.M.

Premiums: Blue \$3.00; Red \$2.50; White \$2.00

- Grade 9+
- Grade 6-8
- Grade 3-5

Requirements:

- Indoor living flowers and plants are to be exhibited in this area (including Indoor Fairy Gardens)
- Potted Plants:
 - Flowering plants should be in bloom.
 - Foliage plants should be in vigorous condition.
 - Plants should be grown in the exhibited container for at least one month prior to fair.
- Plants In Hanging Containers:

- Container for the plant should not be more than 10" in depth or diameter.
- Maximum total length of hanger and plant should not exceed 4'
- Evaluation will include appropriateness of plant for a hanging container, condition, arrangement, hanger to container to plant relationship, and plants being well established.
- Terrariums:
 - The terrarium may not exceed 24" in any dimension.
 - Terrariums should be planted four to six weeks ahead of exhibiting.
 - Members must be able to identify all plant materials in their terrariums, and know why they were selected for use (quality, container and design).

Exhibit Suggestions:

- Two or more varieties of house plants with common and botanical names.
- Terrarium dish garden; consider material of general terrarium plant of native/woodland plants of MN.
- Educational exhibit showing plant propagation, plant history, forcing bulbs, flowering plant life cycle, etc.

Landscape Design

Judging on Wednesday July 31st from 10A.M.

Premiums: Blue \$3.00; Red \$2.50; White \$2.00

- Grade 9+
- Grade 6-8
- Grade 3-5

Requirements:

- include a design (paper or 3D model)
- Itemization of supplies, plants, trees, grasses, rocks, bricks, pavers, gates/fences, structures, and other materials used in the design
- A budget
- If multi-year, describe the yearly benchmarks.
- Identify software or computer programs used.
- Mentions elements of landscape design such as: Balance, Focalization, Simplicity, Rhythm and Line, Proportion, and Unity.

Exhibit Suggestions:

- A 3D model of a landscaping design (24x36 inches)
- A binder detailing the exhibit with photos, design, budget, key explaining certain pieces in the design, etc..

- A colored design of the layout with colors. Adding explanation of why certain colored plants and what they add to the design.
- Using a computer and designing landscaping, garden area or new treeline development.
- A display about turf management of golf courses vs baseball fields and why certain types of grasses are used.

- Types of turf grasses for home use.
- Creating a landscape project for a nursing home, hospital or other places with people in care. Using plants or bird feeders for patient comfort.
- Discussion of options of either annual or perennial plants.
- Pollinator gardens

INDUSTRIAL TECHNOLOGY

Premiums: Blue \$3.00; Red \$2.50; White \$2.00

METAL WORK

Exhibit Suggestions:

- Metal work is the creation of metal structures by cutting, bending and assembling processes. It is a value-added process involving the creation of machines, parts, and structures from various raw materials. Could also include a display on properties, uses, or processing of metals
- It is encouraged that youth provide a binder or supporting documentation about the work on the project - pictures of the process, statement of materials purchased or tools utilized, etc.

WOODWORKING

Exhibit Suggestions:

- Woodworking is the skill of making items from wood (or wood substitute/alternative

product), and could include cabinet making (cabinetry and furniture), wood carving, joinery, carpentry, woodturning or other wood manipulation techniques. Could also include a display on properties, uses, or processing of wood or wood alternatives.

- It is encouraged that youth provide a binder or supporting documentation about the work on the project - pictures of the process, statement of materials purchased or tools utilized, etc.

Requirements:

- Please contact 4-H staff if your project is an oversized exhibit

MECHANICAL SCIENCE

Premiums: Blue \$3.00; Red \$2.50; White \$2.00

Project Description:

Includes (but not limited to) automotive, implement, heavy equipment, recreation vehicle, small engine, tractor, electric, type of projects. Includes past projects of Electric, Small Engines and Tractor.

Exhibit Suggestions:

An exhibit focusing on any mechanical science area such as (but not limited to) automotive, implement, heavy equipment, machine, recreation vehicle, small engine, tractor, electric:

- An educational display of some aspect of a machine or a piece of equipment use, operation, modification, repair, care, reconditioning, etc.
- An educational display on the history, purpose, technology or design of a machine or a piece of equipment.
- Engine that has been reconditioned or repaired.
- A device constructed by a member utilizing a powersource.
- Restoration of an engine, vehicle, tractor, machine or implement (body work and/or mechanical)

- Modification of an engine, vehicle, tractor, machine or implement
- If bringing an engine, vehicle, tractor, machine or implement as a project, consider including a binder or display outlining your project process from research to project completion.
- Diagram of wiring in your home/farm showing switch locations, fuse boxes, wire size, capacities, fuse sizes, total bulk wattage, appliance wattage, number of circuits, and type of wiring installation.

Requirements:

- Motorized projects must adhere to safe building and operating design.
- Check space and transportation requirements for large exhibits with your local Extension Educator. Large exhibits may be displayed outdoors
- Fuel must be removed from exhibits for display (fuel can be added for judging purposes, but then removed after judging for safety purposes).
- A colored wiring diagram or schematic must accompany all electric and electronic exhibits. Safety must be reviewed when working with electricity.

NATURAL RESOURCES

Entomology, Exploring the Environment, Forest Resources, Geology & Water/Wetlands projects

ENTOMOLOGY

Premiums: Blue \$3.00; Red \$2.50; White \$2.00

- Grade 9+
- Grade 6-8
- Grade 3-5

Requirements:

- Emphasis of the project must relate to an aspect of entomology. Project must demonstrate specific knowledge of insects. Be prepared to discuss references and sources (e.g. books, magazines, internet, interviews with an expert etc.)
- Displays or booklets on entomology topics should include references and sources. Pictures, drawings, charts, tables, or other figures may be used to support understanding.
- Live projects (e.g. bee or ant colony) will be accepted if the project can be self-sustaining for up to 14 days without special care. A written report or journal should accompany the project. Pictures, drawings, charts, tables, or other figures may be used.
- Collection shall be contained in one see-through enclosed case. Arrange so that the case may be displayed in a horizontal position. Place the project label on the lower right corner of the top.
 - a. Specimens must be collected by the exhibitor. Purchased insects are not acceptable.
 - b. Specimens must be properly pinned with insect pins. Small insects may need to be placed on cardboard points.
 - c. Specimens must be properly labeled.
 - The location, date, and collector must be included on the labels. County and state (and country, when applicable) are minimum location information that should be included. It is valuable to include the nearest town or township where the specimen was collected, the type of habitat it was collected from (e.g. on elm tree; on lake shore; indoors.), and the common name of the insect.

- All labels should be visible so they can be read. Use a permanent ink marker, pencil or print labels from a computer.

Exhibit Suggestions:

1. Projects can include but is not limited to life history displays (e.g. insect life cycle, honey production process, etc), scientific investigation (e.g. insect habitats or effects of environment factors on insects), insects in current events (e.g. pollinators, butterfly tagging, invasive species, protected or declining species), insects in our ecosystem (food source, roles in food production, behaviors, health or disease, etc)
2. Live projects (e.g. bee or ant colony)
3. Utilize the scientific method to learn about insects. Remember to introduce the subject, describing the process (materials and method), predicting an outcome, stating the results, and discussing any conclusions. Get involved and share what you learned through citizen science projects.
4. Collections- cases can be purchased through a variety of vendors or homemade.
 - a. Specialty insect collection can include but is not limited to a collection of a single order (e.g. Coleoptera or Lepidoptera), a collection of immature insects, a collection of insects from a particular habitat (e.g. aquatic, forest, or prairie) or a collection of economic pests of a specific crop (e.g. insects attacking corn).
 - b. General collection- starter collection should have 10-20 insects, goal is to get to 50 species of adult insects representing at least 8 orders. Each year add or replace insects. A full 50 species case would be approximately 19" x 16.5" x 3" to 24" x 18" x 3".

EXPLORING THE ENVIRONMENT

Project Description:

Share what you've learned about the relationships and interactions of plants, animals, humans, and their ecosystems through the specific challenges they face and/or solutions they offer.

Premiums: Blue \$3.00; Red \$2.50; White \$2.00

- Grade 9+
- Grade 6-8

- Grade 3-5

Exhibit Suggestions:

- Display or video about environmental challenges, such as climate change, pollution, erosion, etc., describing the causes and their sources, its effect on people and other living things, and potential solutions. Could include news clippings and other media about an environmental issue that you care about.
- Phenology journal used to keep track of environmental changes throughout a season.
- Display showcasing your participation in an event such as a BioBlitz or naturalist program, or other citizen science project to collect data and/or raise awareness.
- Complete a community map or assessment, to observe environmental needs and community assets.
- Vlog detailing hiking, camping, paddling, backyard, and other explorations/adventures
- A display or journal of Minnesota plants, insects, animals, birds or fish. Include pictures or drawings and information on habits, foods, and shelter needs.
- Collection of wildflowers growing near where you live or a place you visit.
- Experiment related to local environmental engineering and/or technology applications: such as urban design, pocket prairies, roadside management, eco-friendly buildings, etc.
- Pros and cons regarding a specific piece of environmental policy and/or management.
- Choose one living thing in the forest, field or stream and make a display to describe its ecosystem and/or the flow of energy throughout the ecosystem.
- Investigate an invasive, threatened, or extinct species in your area. Where do invasive species come from and is it considered invasive in its native area? What threatens them and what can be done about it? Why do species go extinct and as that happened in the area where you live?

Requirement:

- Follow local or state policies for collecting, removing and/or transporting plants and other organisms

FOREST RESOURCES

Premiums: Blue \$3.00; Red \$2.50; White \$2.00

- Grade 9+
- Grade 6-8



- Grade 3-5

Requirement:

- Please follow local or state policies for collecting, removing and/or transporting plants and other organisms
- Specimens should be mounted on cardboard or other sturdy material.

Exhibit Suggestions:

- Identify the parts of a tree and what they do with a poster or collection of leaves, seeds, needles, etc.
- Display showing tree growth; annual ring cross-sections; make a seed collection.
- Prepare a report with drawings about your favorite tree--include name of tree, drawings or pictures of tree, facts and uses of the tree, and other appropriate information.
- Display showing layers of the forest; renewable versus non-renewable resources; forestry careers; leaf and twig identification; taxonomic keys; nutrient road maps.
- Display on forest ecosystem health such as succession; tree and forest measurements; fire's effect on the forest; how trees grow; forest types; harvesting methods; pathology of the forest, invasive species, human impacts on the forest.
- Photographic display or report on forest products or industries, including maple syrup production; wood products; Christmas trees or others (recreation, wildlife, etc.).
- Display on woodland management such as policies created by the U.S. Forest Service or specialized design including shelterbelts/windbreaks and urban forestry.
- A video or display about the human health benefits from trees, and what role trees play in global ecology.
- Organize or take part in a mass tree planting and calculate the amount of carbon that will be offset
- Explore the history of forestry through the lens of indigenous practices or the effects of treaties. How have these relationships impacted people and landscapes?

GEOLOGY

Premiums: Blue \$3.00; Red \$2.50; White \$2.00

- Grade 9+
- Grade 6-8
- Grade 3-5

Exhibit Suggestions:

- Display of rocks, minerals, gemstones, a rock plate; can be displayed in an egg carton for younger youth, or in a display case as youth progresses in the project; include in the display, labels of specimen name and location collected.
- Rocks, minerals, or fossils from within Minnesota or on a definite theme such as metamorphism, weathering, quartz minerals, ores, or a theme of your own choosing.
- Polished rock specimen; include an unpolished specimen of each rock type for comparison.
- Educational exhibit showing the "science how's and why's" dealing with the principles of geology and natural earth sciences.
- Exhibit explaining the three main rock types (Igneous, Metamorphic, Sedimentary) include examples of each.
- Model of a geologic earth structure or feature such as volcano, mountain range, plate tectonics, earthquake, cave, glacier.
- Timeline of geological time scale.

WATER RESOURCES

Premiums: Blue \$3.00; Red \$2.50; White \$2.00

- Grade 9+
- Grade 6-8
- Grade 3-5



Exhibit Suggestions:

- Demonstrate water's unique chemical/physical properties, such as how

heat and salt affect water density or how a wetland ecosystem changes throughout the seasons

- Project showing how water is necessary for life, such as a display on water/wetland ecosystem services like filtration or nutrient cycles from plants
- Share how water connects earth systems like a poster displaying your local water cycle or watershed
- Research your local water body's thermoclines or nutrient cycles
- Display on how water is used by people, such as:
 - A record tracking your family's water footprint at home, or
 - A model showing stormwater runoff, or
 - A map showcasing water accessibility or insecurity in a specific region of the world
- Exhibit detailing water/wetland resource management measures like erosion control practices, and terraces, or a map of local, regional, state, or global water bodies and water quality.

Requirement:

- Follow local or state policies for collecting, removing and/or transporting plants and other organisms

NEEDLE ARTS

Premiums: Blue \$3.00; Red \$2.50; White \$2.00

- Grade 9+
- Grade 6-8
- Grade 3-5

Requirements:

- This project area is for projects created using a hand needle, hook, shuttle or loom.
- Each exhibit must include a consumer information tag, if appropriate, with the following information: pattern name and source, fiber content, and care instructions.
- Exhibitor should be prepared to discuss techniques, fiber content, care instructions, and cost. Exhibitor is encouraged to bring instructions, pattern, or other educational sources used.
- Projects must be finished and ready to display. If an item is framed, a wall hanging, or to be displayed on a wall, it should be finished and ready to hang.

- Project kits are acceptable in this project area. The project must meet all other requirements.



Exhibit suggestions:

- Any item made by the member using the techniques of knitting, crocheting, embroidery and crewel, counted cross stitch, needlepoint, hardanger, weaving, appliqué, latch hook, tatting, hand embellishments, felting, hand embroidery.
- Consumer Product Analysis: Comparison and evaluation of materials, supplies, or accessories used for a needle arts technique.
- Poster or display showing how needlework product is or could be priced, advertised and marketed.
- Poster or display comparing different techniques of a particular needle art (ex. different felting techniques, different stitches).
- Poster or display showing how to care for your project supplies (ex. storing, organizing, cleaning).

- Historical/Cultural Study: Story, poster, or display about a needle arts heirloom from your family or local history museum. Exhibits must

PERFORMING ARTS - EXHIBITS & DISPLAYS

Judged on Tuesday, July 23rd at 6PM- Old Milan School

Premiums: Blue \$3.00; Red \$2.50; White \$2.00

- Grade 9+
- Grade 6-8
- Grade 3-5



State Fair trip to come from live performances given at Performing Arts Night. Tuesday July 19th. Building exhibits will be eligible for the State Fair if no live performance trips are taken.

Requirements:

- Exhibit can be either a performance or an exhibit that shows a member's involvement or interest in the performing arts.
- Entries in Performing Arts are distinct from Share-the-Fun in the intention behind the entry. Performing Arts entries will be judged based on the criteria identified below and on an individual basis, even in group performances.
- An exhibitor may submit entries in both performance and non-performance based classes (e.g. a member may perform a puppet show that they wrote as a performance based exhibit and submit the script as a non-performance based exhibit)

PERFORMANCE BASED

Exhibit Suggestions:

- Perform a short story, show scene, music selection, dance, monologue, poetry, etc.

include information about how items should be preserved

Requirements:

- A performance in music, dance, drama, etc.
- A performance cannot last longer than 5 minutes.
- Performances may be given as a solo, duet, or a small group.
- To be eligible for State Fair, the member must be able to discuss the process of selecting, planning, performing and reflecting on their project work.
- The technique and artistry of the performance will be considered.

NON-PERFORMANCE BASED

Exhibit Suggestions:

- An educational display on some aspect of music, drama, dance, or performing.
- A journal or scrapbook (with written statements) of current performing arts experiences.
- A written piece such as poetry, sheet music, or other physical artifact intended for performance created by member.

Requirements:

- An exhibit such as a poster or display that shows a member's involvement or interest in the performing arts.
- To be eligible for State Fair, the member must be able to discuss the process of selecting, planning, creating and reflecting on their project work.
- The workmanship, general appearance and technique used to develop the exhibit will be considered.

PETS POSTERS & DISPLAYS

Premiums: Blue \$3.00; Red \$2.50; White \$2.00

- Grade 9+
- Grade 6-8
- Grade 3-5

Exhibit Suggestions:

- Educational display explaining pet care, health, nutritional needs, etc.; exhibit must include a photograph of 4-Her with their pet.
- Pet related exhibit, i.e. photo album, history of species display, animal care display.

DOG

Not part of Dog Show

- Educational exhibits may include models, diagrams or pictures.

- Examples: dog diseases, breeding, training, etc.

CAT

Exhibit Suggestions:

- Educational exhibits may include models, diagrams or pictures. Members must have a photograph of themselves with their cat shown on a display or poster.

PETS

Exhibit Suggestions:

- Educational display explaining pet care, health, nutritional needs, etc.

CLOVERBUD PETS (LIVE ANIMAL)

Premiums: Award of Merit Ribbon & \$2.00 premium

Cloverbud may show any pet during the Pet Show Saturday, July 30th at 4:00 p.m. **(adult/responsible person must handle the animal at all times)**

****All beef, dairy, sheep, pigs (including pot belly), goats, horses, rabbits, poultry and dogs MUST meet the same health requirements as listed under the project**

PET SHOW (LIVE ANIMAL)

Premiums: Blue \$4.00; Red \$3.00; White \$2.00

Pet Show: animals are exhibited during the 4-H Cat & Pet Show on Thursday August 1st at 5:00 p.m.

Requirements:

PHOTOGRAPHY

Premiums: Blue \$3.00; Red \$2.50; White \$2.00

Exhibitors are limited to bringing 8 photos or less

- Grade 9+
- Grade 6-8
- Grade 3-5

Requirements for BOTH Elements of Photography and Photo Manipulation:

- All photos exhibited must have been taken/produced/enhanced by the exhibitor during the current year
- The exhibitor's name, club, county and exhibit class should be clearly printed on the back of the exhibit.
- Unaltered 4"x6" photos must be attached to the back of any exhibit
- For safety, picture frames or glass are not allowed
- Exhibits with multiple photos should use 4"x6" prints -multiple photos should be displayed on a board (see below for board information)
- Enlarged photos should be 5"x7" or 8"x10"
- Photos should be mounted on a mat board, foam board or poster board using neutral colors (white, tan, gray or black). Do not use construction paper, cardstock, colored paper or wrapping paper.
- Use a 14" x 22" board for 5 or more photos in an exhibit. Cut smaller boards for enlargements
- Exhibits should reflect the appropriate size for the item designed, e.g. the photos used for an ornament, a calendar, a poster, or brochure would require different sized photographs.
- Learn how to prepare your photos for the fair
 - Video Tutorial
z.umn.edu/4HPhotoPrepVideo
 - Slideshow Tutorial
z.umn.edu/4HPhotoPrepSlideshow

- No State Fair trip with live animals. Pets will not remain at the Fairgrounds during the County Fair.
- **PET MUST BE DOMESTICATED.**
- A cat or dog may be shown in the pet show or the cat or dog show, not both.
- Animals that were raised as a part of another project may not be shown in the pet show.
- ***For the safety of animals and participants, animals with the potential to run away must wear a collar and leash, or otherwise be restrained***

Equipment:

Use any device capable of capturing a photographic image to be printed: digital or film camera, cell phone, tablet or drone. A computer, phone or tablet is required for photo manipulation.

Please note: Supervision of the drone operator is important until they understand not only how to use a drone but also understand the etiquette and rules for using the drone. For information see: <https://www.faa.gov/uas> (unmanned aircraft systems)

Photo/Video Release Form - Use this form when including any person in your video that is NOT in 4-H. This verifies that the subject has agreed to have their photograph taken. Keep this signed form in a file. Here is a link to the Photo & Video Release form in [English](#), [Spanish](#), [Hmong](#) and [Somali](#).

Elements of Photography

This exhibit will focus on what makes a good photograph (composition, light, shutter speed, color, depth of field, leading lines, etc). Only select whole image edits or modifications are allowed in post-production. Post-production is any adjustment made after the photo is taken using editing software. Allowed whole image edits must be applied to the entire image and not specific areas of the photo. Allowed whole image edits include:

- cropping
- exposure correction
- color saturation
- contrast
- sharpening
- conversion to black & white

On-camera filters: a physical filter that attaches to the camera lens (neutral density, polarizer, various colors, etc) are allowed.

Exhibit Suggestions:

1. Photo Story:

- Show a town's history or a family history. This could include photos of historic buildings, old photos copied from the historical society or library, family or individual portraits, etc.
 - Develop a documentary of another of yours or a friend's 4-H project or of your 4-H club's community service project
 - Document environmental issues such as the plight of pollinators, pollution, soil erosion, or the steps taken to improve the environment
 - Present a day in the life of – farm or city youth, a local professional person such as a school nurse or a firefighter, law enforcement office, or other interesting personality
 - Exhibit a series of photos on how to make or do something
2. Common Theme or subject:
 - Display a series of 3 to 7 photos of a common subject such as people, buildings, landscapes, animals, seasons, action, nature, weather, close-ups, etc.
 3. Showcase a Photographic Elements:
 - Display a series of 5 to 7 photos that illustrate some photographic element such as composition, lighting, shutter speeds, depth of field, color, contrast, cropping, etc.
 4. Panorama:
 - Show a single image created in camera or a triptych (set of 3 photos intended to be used together) of several images created by moving the camera. A triptych may consist of separate images that are variants on a theme, or may be one larger image split into three.

PHOTO MANIPULATION

This exhibit will focus on using photography to show creatively edited photos and how photography is used in everyday life. Software editing is required for this category and may include:

- layering
- all digital filters (except black and white)
- creative coloring
- removing or adding objects
- text additions
- etc.

Entries in this category must involve editing with software such as Photoshop, Lightroom, IPhoto, Picasa, Gimp, Picmonkey, Pixi, Microsoft Publisher, etc.

Suggested softwares (all can be used on Android, iPhone, and iPad): Snapseed (easy to use and does a nice job), Adobe Photoshop Express (good option

for those wanting to grow into Photoshop), Pixir (2nd to 6th grades only), PicsArt Photo Studio (powerful photo and video editing app).

Please view the "[Introduction to Photo Manipulation](#)" slideshow for specific examples and explanations.

Stock photos are not allowed. A stock photo is a photo taken by another person (not yourself) who has licensed their photo for specific uses by others. All images used in photo manipulation exhibits must have been taken by the exhibitor. Examples of images not allowed include: an image of space (taken by NASA) as the background of your photo or if you want a shark inserted into your composite image, you must take a photo of a shark.

Exhibit Suggestions:

1. Composite Photo: Multiple images combined into one image
 - Panoramas (overlapping areas of several photos and stitching them together in post-production) the same person in multiple places within the photo replacing the sky
2. Single Source Image Manipulation
 - acne removal, eye enhancement, teeth whitening, etc.
 - selective color manipulations (i.e. converting everything to black and white except items that are the same color red)
 - apply digital filters (other than black and white)
 - removing distractions in the background, etc.
3. Photo Series:
 - Make a series of 5 to 7 digitally edited photos that illustrate a common theme such as environmental issues, plight of pollinators, how to do something, etc.
4. Enlarged Photo:
 - Show a 5"x7" or 8"x10" print that has been digitally enhanced and illustrates software skills. An unaltered 4 x6" print must be attached to the back of the exhibit.
5. Publications:
 - Show calendars, brochures, posters that are created using computer software
6. Photo Novelties:
 - Display mugs, puzzles, blankets, or other media on which photos have been printed
7. Slide Show:
 - Make a compilation of photos with titles, voice-over or background music. For judging, exhibitors can show their exhibit

on a 14" x 22" poster board, computer or tablet.

QUILTING

Premiums: Blue \$4.00; Red \$3.50; White \$3.00
Judged at County Fair

Quilting is the term given to the process of joining a minimum of three layers of fabric together either through stitching manually by hand using a needle and thread, or mechanically with a sewing machine or specialized longarm quilting system. (Wikipedia)

- Grade 9+
- Grade 6-8
- Grade 3-5



Requirement:

- Attach an index card which includes: pattern name and source, fiber content of fabric & batting, and care instructions.
- Finishing techniques may be machine quilted, hand quilted or hand tied. If not quilted or tied

by the 4-H'er, the exhibitor must state who tied or hand/machine quilted the final project.

- Techniques used, size, and difficulty of the project should be based on the exhibitor's sewing/quilting experience level.

Exhibit Suggestions:

- A quilted item, any finishing technique acceptable. Examples: potholder, table runner, doll quilt, bed-sized quilt
- Repair, repurposing, or re-design of a previously finished quilt. Example: an heirloom quilt with significant repairs or turned into another quilted item.
- A display on a quilting topic of your choice. Examples: the history of quilting/quilting patterns, a comparison of different fabrics or threads, different types of quilting notions and tools, piecing techniques.

SAFETY

Premiums: Blue \$3.00; Red \$2.50; White \$2.00

- Grade 9+ -Grade 6-8 -Grade 3-5

Exhibit Suggestions:

- A First Aid or Childcare Kit with explanations for the items you included.
- A Public Service Announcement and/or social media toolkit to promote a safety topic of your choice.
- List tips for being safe when home alone, such as emergency numbers to call, safety while preparing snacks, keeping doors locked, etc.
- Attend and report on a safety program such as farm/livestock/animal, fire, food, firearms, ATV,

watercraft, wilderness/outdoor, traffic, bike, personal, online, sun/skincare or others.

- Interview a safety professional and showcase their advice.

Requirement:

- Abide by local, state and federal laws regarding your safety topic
- Please contact 4-H staff if your project is an oversized exhibit

SCIENCE INQUIRY

In this project area, 4-H youth explore and become confident in the process of doing science through science inquiry. Science inquiry is a systematic process where a curiosity or question is explored, leading to new knowledge or understanding about a phenomenon (an observable fact or event).

Premiums: Blue \$3.00; Red \$2.50; White \$2.00

Exhibit Suggestions:

- Video of you exploring the physical properties of slime using different materials/recipes to make slime
- Display different types of birds feeders you used to determine if there is a preferred bird feeder type in your backyard
- Powerpoint showing the different types of frogs you found in a pond as you investigated the difference in the frog

species in the spring and the frog species in the summer

- Display showing the different types of treats and the data you collected as you explored how your dog responds to different treats during training
- Tri Fold display board showing the results of your investigation of different types of sunscreen to see their effects on UV beads
- Slide show illustrating different water filtration systems you tested and the results you analyzed to identify which one resulted in the cleanest water
- Display the rock candy created as a result of investigating how the concentration of sugar affects crystal growth

Requirement:

- Include the question, issue, or phenomena being investigated

- Include description of how a science inquiry process was used to help understand the phenomenon being investigated or studied

SELF-DETERMINED

The Self-Determined project area is intended for those projects that might not fit within other categories and for those learning experiences that members select, plan, and manage on their own. It is distinct from learning experiences determined or guided by others (e.g. school work, club-determined projects). This is not a "catch-all" category but rather is focused on intentional self-directed learning. Members should be able to describe what they did, how they reflected on it, and how they applied what they learned.

Premiums: Blue \$3.00; Red \$2.50; White \$2.00

- Grade 9+ - Team grade 9+
- Grade 6-8 - Team grade 6-8
- Grade 3-5 - Team Grade 3-5

Exhibit Suggestions:

- A portfolio describing the selection, planning, and management of a service learning project and what the member learned during the experience.
- A trifold display made as part of a school assignment with the addition of an accompanying journal describing the process of developing the display and capturing reflection on learning during completion of the assignment
- A photo collage capturing the experiences and stages of development of an event planned and facilitated by the member either individually or as part of a team
- A video or digital blog capturing the "behind the scenes" work, reflection, and application of concepts done by an individual member while working as part of a team on a project or assignment A lego creation (not a kit) intended to include some deeper thinking and learning that is



- Explain each step followed during the science inquiry process

not encapsulated in any other project, requiring the exhibitor to create their own learning path.

Requirement:

- A self-determined project will be judged primarily on the self-guided learning experience. While the artistry and craftsmanship of the exhibit itself will be considered, emphasis will be placed on the selection and identification of the self-guided learning experience and the ability of the member to convey the experience and what was learned from it. If the member wishes to be judged on the exhibit's craftsmanship or artistry, the exhibit should be entered within the appropriate project area (e.g. a project in seed art should be submitted within Crafts and Fine Arts project area if looking to be judged on the quality of the final product and the process and learning associated with its assembly).
- Exhibits consisting of projects or assignments done for school or other organized learning environments must indicate how the member went above and beyond the requirements of the assignment/project and individualized the learning to meet their own goals and desired outcomes.
- Exhibits may be submitted by individuals or teams. A team may consist of not more than three (3) individuals. Team members will be judged collectively.
- To be eligible for State Fair, the member(s) must be able to discuss the process of selection, planning and management of a self-determined learning experience.

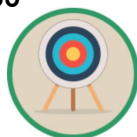
SHOOTING SPORTS

Premiums: Blue \$3.00; Red \$2.50; White \$2.00

- Grade 9+ -Grade 6-8 -Grade 3-5

Requirements:

- No explosive materials are allowed. Arrow tips or broadheads should be removed for display but may be included as part of the judging experience if secured for safety.
- Exhibits including firearms & bows must be sporting varieties only. Exhibitors must include a color photo of the item to be left on display - bows and firearms will not be left on display.



The photograph should be taken prior to the county fair and attached to the display.

- MN and 4-H regulations for handling and storing firearms must be followed.

Exhibit Suggestions:

- Safety techniques applied to shooting activities (e.g., range commands and range safety, eye and ear protection, cleaning a firearm, dressing for safety-first aid, survival skills, etc.).
- Shooting Skills (e.g., basic safety rules, basic parts and functions of each piece of equipment, care and maintenance, accessories, position, etc.).

- Design and create shooting sports equipment (e.g., pellet stand, kneeling role, target stand, quiver, etc.)

TECHNOLOGY

Premiums: Blue \$3.00; Red \$2.50; White \$2.00

Note: To include Aquatic Robotics, Computer & Robotics exhibits.

Project Description:

Share what you've learned about computers, technology, using Aquatic Robotics and/or programming and/or another type of robot or a robotics class or program.

Exhibit Suggestions:

- Robot, Edison robots, EV3, WeDo, Osmos, VEX; Have a photo of robot if you do not intend to leave robot on display
- Display the robot using diagrams of programming, photos, booklets, etc
- Video of robot in action
- Exhibit a ROV (Remote Operated Vehicle) and operation; show the use in Aquatic Invasive Species (AIS) education
- Explain the foundations of computers and explore how computers work for various projects.
- Learn about cyberbullying and explain prevention techniques
- Share about a robotics class you participated in and what you learned
- Create an educational app
- Explore computer-based careers
- Design computer hardware/software

Requirements:

- Include description, images/photos needed to assist with verbal or written description
- Description(s) can be verbal or written
- Computers, smart phones, tablets, ect. can be used during the judging process

Aquatic Robotics

- Grade 9+
- Grade 6-8
- Grade 3-5

Requirements:

- Design and build their own remote-operated vehicle (ROV)
- Use and adapt ROV to monitor water quality/AIS education
- May work in teams of 3 or more youth, or an individual may exhibit
- Illustrate the community partnership (example: DNR, Water Resource or Lake Association)

Exhibit Suggestions:

- History and nomenclature of firearms.
- Sportsmanship: Ethical behavior and responsibility
- Display, binder, poster illustrating the process of doing the activity/project
- Exhibit of ROV
- Display showing the ROV's use in AIS education
- Booklet showing team's efforts in addressing AIS education

COMPUTER

Premiums: Blue \$3.00; Red \$2.50; White \$2.00

- Grade 9+
- Grade 6-8
- Grade 3-5

Requirements:

- Computers may be used in judging, but emphasis is on documentation, screen print, and summary. 4-H'ers are responsible for providing and securing any hardware used for judging; hardware may not be left on display.
- Reports and written summaries should be bound in a booklet or placed in a folder.

Exhibit Suggestions:

- Display showing the parts of a computer and how they work, consumer choices involved when buying a computer, how computer software can be put to use. Include statement of purpose, written plan for use, and examples of use.
- Program/software developed by the 4-H member including a statement of objectives, and discussion of the program. Program/software be original or adapted by the member from an existing program.



Robotics

Note: The goal of the 4-H robotics program is for the 4-H members to explore science, technology and engineering through designing and building a functioning robot. The robot can be either programmable or remote controlled. The robot can be created by an individual or a group.

Requirements:

- Exhibits must be labeled with name, and county on all pieces of the exhibit. Fair staff will not be responsible for lost, stolen or damaged robots or parts.
- Include a description of the robots ability to sense, follow a plan and complete an act
- Exhibits may have a one page report explaining the function, purpose and construction of the robot.

Exhibit Suggestions:

- A robot, a display, diagrams of programming, booklets, etc.

VEGETABLE, FRUIT, AND HERB GARDENING

Fruit

Judging on Wednesday July 31st at 10A.M.

Premiums: Blue \$3.00; Red \$2.50; White \$2.00

- Grade 9+
- Grade 6-8
- Grade 3-5

Requirements:

- If displaying a potato box (fruit crate size) or clear Rubbermaid container, you need 6-10 potatoes of the same variety or 2-3 varieties (this year's crop) similar in size with the variety identified on an information card.
- Be familiar with crop input costs and the growing process.
- The exhibit must be produced at home or by a close relative. CANNOT BE STORE PURCHASED.

Exhibit Suggestions:

- Display a box (fruit crate size) or clear Rubbermaid container of potatoes that contains all the potatoes in that hill (all the potatoes one plant produced)
- Display a box (fruit crate size) or clear rubbermaid container of 6-10 potatoes
- Educational display illustrating diseases and control, methods of mulching and reasons, causes and effects of sun-scald.

Potato

Judging Wednesday July 31st at 10A.M.

Premiums: Blue \$3.00; Red \$2.50; White \$2.00

- Grade 9+
- Grade 6-8
- Grade 3-5

Exhibit Suggestions:

- Display a box (fruit crate size) or clear rubbermaid container of potatoes that contains all the potatoes in that hill (all the potatoes one plant produced)
- Display a box (fruit crate size) or clear rubbermaid container of 6-10 potatoes from one or two hills of the same variety of potato.
- Educational display illustrating diseases and control, methods of mulching and reasons, causes and effects of sun scald.

Requirements:

- If displaying a potato box (fruit crate size) or clear rubbermaid container, you need 6-10 potatoes of the same variety or 2-3 varieties (this year's crop) similar in size with the variety identified on an information card.
- Be familiar with crop input costs and the growing process.

- The exhibit must be produced at home or by a close relative. CANNOT BE STORE PURCHASED.

Herb Gardening

Judging Wednesday July 31st at 10A.M.

Premiums: Blue \$3.00; Red \$2.50; White \$2.00

- Grade 9+
- Grade 6-8
- Grade 3-5

Exhibit Suggestions:

- Educational display showing some aspect of raising or using herbs.
- A herb container garden planted in a tub, or pot, or planter.
- A dried sample of herbs you have raised, harvested and dried (in an airtight container).
- A display using a 4-H project kit (growing a variety of herbs in a container).

Vegetable Gardening Box

Judging Wednesday July 31st at 10A.M.

Premiums: Blue \$3.00; Red \$2.50; White \$2.00

- Grade 9+
- Grade 6-8
- Grade 3-5

Clarification - Vegetable Variety is either Large, Medium or Small

Exhibit Suggestions:

- A box (fruit crate size) or clear Rubbermaid container used to display vegetables.

Requirements:

- Label vegetables with proper variety names on an information card.
- When exhibiting a collection of vegetables, the collection should include six different kinds of vegetables (For example: 1 large variety + 3 medium varieties + 2 small varieties)
- 6 different vegetable specimens for this exhibit choosing any combination of the following:
 - One large vegetable specimen (cabbage, squash, melon, pumpkin, cauliflower, etc.)
 - Three different medium-sized vegetable specimens and 3 of each specimen (tomatoes, onions, peppers, cucumbers, kohlrabi, carrots, beets, turnips, etc.)
 - Two small vegetable specimens and 6-12 of each specimen (green beans, peas, lima beans, etc.)
- Potatoes may not be included (enter under the Potato project).
- The exhibit must be produced at home or by a close relative. CANNOT BE STORE PURCHASED.



Vegetable Plate

Judging Wednesday July 31st at 10A.M.

Premiums: Blue \$3.00; Red \$2.50; White \$2.00

- Grade 9+
- Grade 6-8
- Grade 3-5

Clarification - Vegetable Variety is either Large, Medium or Small

Exhibit Suggestions:

- On a disposable plate, display an example of ONE vegetable variety.
- Examples of individual variety on a plate include:
 - Large-sized vegetable specimen: 1 sample (cabbage, squash, melon, pumpkin, cauliflower, etc.)
 - Medium-sized vegetable specimens: 3 of each specimen (tomatoes, potatoes, onions, peppers, cucumbers, kohlrabi, carrots, beets, turnips, asparagus, etc.)
 - Small sized vegetable specimen: 6- 12 of each specimen (green beans, peas, cherry tomatoes, jalapenos, lima beans, etc.)

Requirements:

- Label vegetables with proper variety names on an information card.
- Only have one vegetable variety (Large, Medium or Small) on the plate. (For example: Variety is Medium sized - three onions).
- The exhibit must be produced at home or by a close relative. CANNOT BE STORE PURCHASED.

Vegetable- Largest Vegetable

Judging on Wednesday July 31st at 10 A.M.

Premiums: Blue \$3.00; Red \$2.50; White \$2.00

Exhibit Options:

- Squash
- Cabbage
- Pumpkin
- Melons
- Tallest Stalk of Field Corn

Requirements:

- Include an information card with name, plant variety and date planted.
- Stalks of Field Corn should have roots on the stalk.
- The exhibit must be produced at home or by a close relative. CANNOT BE STORE PURCHASED.

VETERINARY SCIENCE

Premiums: Blue \$3.00; Red \$2.50; White \$2.00

- Grade 9+
- Grade 6-8
- Grade 3-5

Project Description:

Share what you've learned during an in-depth exploration around veterinary science topics.

Exhibit Suggestions:

- An exhibit focused on technology or industry advancements in veterinary science
- An exhibit on diseases of animals focusing on the history, management, prevention, etc.

- An exhibit on use of different medications in veterinary science focusing on dosage, records, implications of use, impact on the industry
- An exhibit focused on surgical and nonsurgical procedures used in veterinary medicine (spaying/neutering pets, embryo transfer, wellness visit, etc.).
- An exhibit focused on careers in veterinary science exploration (such as job shadowing, interviews and opportunities)
- Create a 3-D model of the skeletal system of the animal of your choice

VIDEO/FILMMAKING

Premiums: Blue \$3.00; Red \$2.50; White \$2.00

- Grade 9+
- Grade 6-8
- Grade 3-5
- Production Team (2-3 members per team/can come from different schools and/or grades)

Video/Filmmaking

Video/Filmmaking – Production Team (2-3 members per team)

Requirements:

- It is encouraged that when developing a 4-H video/filmmaking exhibit, members will develop skills beyond the classroom.
- It is recommended that the video/filmmaking exhibit be 3-5 minutes and no longer than 10 minutes.
- All video/filmmaking exhibits must be made by the exhibitor OR by a production team of which the exhibitor must be a member
- The exhibitor's name, grade, and club must be clearly printed on all exhibit pieces.

- All video/film footage exhibited must have been made/created DURING THE CURRENT 4-H YEAR. When appropriate, (i.e. historical sequences) older video clips can be used.
- The member should provide the video file even if sending it electronically.
- Video/film must be presented on DVD, USB, flash drive or data CD. Participants are also allowed to upload their video to YouTube.
- Videos can also be delivered via Youtube, Vimeo, Frame.io or similar online based presentation sites.
- Video/film needs to be in presentation form, including a title and credits
- The video/film must be original material. Any video/film exhibit, which appears to contain copyrighted material, including music, will not be publicly displayed unless the exhibitor has written permission from the producer to use the material in the video/film. Portions and music from other sources must be documented and have a copyright release.
- A computer must be brought for viewing the video/film during the conference judging, other arrangements need to be made in advance with the 4-H staff
- Video/film must be playable on Windows, use file format including .WMV, .FLV and .MPEG, .AVI, .MOV, .AVCHD, .MPEG-1, .MPEG-4, as well as a playable DVD.
- 4-H videos must adhere to G or PG (parental guidance) standards. The 4-H Code of Conduct requires respectful behavior, so you may not depict: violence, obscene language (or naughty words) including swearing, rude interactions or insults, or use or visibility of guns or fighting, etc. Remember not only teens and pre-teens view the videos but young children and their parents. Keep this in mind when creating your video.

Note: This is not a slideshow (see Manipulated Photography for slideshow)

Video Release form - [Use this form when including any person in your video that is NOT in 4-H.](#) This

verifies that the subject has agreed to be in your video. Keep this signed form in a file. Here is a link to the [Photo & Video Release](#) form in [English](#), [Spanish](#), [Hmong](#) and [Somali](#).

Equipment: Any electronic device capable of capturing a video image video camera, digital camera, DSLR, time lapse camera or trail camera, cellphone, tablet, GoPro or drone with attached camera (operator must meet age requirements to use a drone).

Note: Supervision of the drone operator is important until they understand not only how to use a drone but also understand the etiquette and rules for using the drone. For information see: <https://www.faa.gov/uas> (unmanned aircraft systems)

Exhibit Suggestions:

- Showcase various video/film techniques
- A selected subject. Include a short storyboard or outline
- A poster that illustrates how a video/film camera works, or how to care for video/film equipment, illustration of computer video/film creation, etc.
- A video/film made by blending computer technology and traditional camera created video/film.
- A video/film using data from trail camera or time lapse camera (stop action video) or drone with attached camera (see note related to drone use).
- A video/film using Claymation, dolls, Lego for stop action
- Document environmental issues such as the plight of pollinators, pollution, soil erosion, or the steps taken to improve the environment
- A short documentary on a family member or interesting member of your community
- A trailer for a movie or event (can be fictional)
- A story that you tell using your friends and family
- A commercial, real or fictional

WILDLIFE/BIOLOGY & MANAGEMENT

Premiums: Blue \$3.00; Red \$2.50; White \$2.00

- Grade 9+
- Grade 6-8

- Grade 3-5

Project Description:

Wildlife biology and management is about taking care of and protecting animals in their natural habitats to ensure their well-being and the balance of nature. Wildlife management is like being a

guardian for animals and their homes. It's about making sure they have enough food, clean water, and safe places to live. Wildlife managers also help sick or injured animals and make sure there is a good balance in nature so all animals can thrive.

Exhibit Suggestions:

- Develop a wildlife management plan--show practices related to land use and forest management for wildlife such as controlled burns, logging, planting, etc.
- Explore basic concepts of Wildlife Management (waterfowl wingboards, birdhouse trails, carrying capacity, game animal habitat requirements, history of game management, etc).
- Explain some factors that threaten or endanger animal species such as urbanization, climate change, or habitat loss. Or explore a species that went extinct and why it happened.
- Build a bird or bat house, nesting structure, hibernaculum, animal shelter or feeder and explain the history of artificial shelter structures and how it can benefit a species.
- Display a collection of identified wildlife scat (droppings), skulls or skins. How do they differ? Why?
- Show how wildlife can be classified into herbivores, carnivores or omnivores using skull diagrams

- Write a wildlife landscape habitat plan
- Report on animal adaptations, such as animal camouflage. How do adaptations of plants and animals match the environment they live in?
- Make a display that details a food chain/web of a particular habitat.
- Explain the life cycle of your favorite wild animal in a video, poster or display.
- Shadow or volunteer at a nature center or park and share your experience using a journal, video, or display. Learn about rules and policies in place to protect or manage certain species of wildlife.
- Identify, mount and label a book of plants native to a certain region
- Make a display of animal signs, animal tracks, homes or foods
- Do a bird study, including beak type, wings, feet, song, feeding patterns, etc.
- Make a collection of wildflowers growing near where you live or a place you visit

Requirements:

- All wild game used in exhibits must be tagged appropriately according to state laws.

YOUTH LEADERSHIP

Premiums: Blue \$3.00; Red \$2.50; White \$2.00

- Grade 9+
- Grade 6-8
- Grade 3-5

Youth Leadership is a project area that requires the members to discover their skills and then develop those skills and share them with others. This might happen individually or with a group.

Members exhibiting in this project should be prepared to discuss and/or have written information about what they learned about their ability to lead a project. Members should share how they've built an understanding of self, developed skills, learned how to work with others, overcome obstacles or adjusted goals, developed understanding of making decisions, and/or managed and or worked in groups.

Exhibit Suggestions:

- Share your youth leadership experience. This could include your 4-H youth leadership journey, or your leadership in an organization within your school or community.

- Share what you gained and shared from a conference or retreat you attended.
- Share a personal development plan you have implemented
- Develop a (career and/or college prep) portfolio
- Develop a presentation that illustrates how you've built understanding of self, developed communication skills, learned how to work with others, developed understanding of making decisions, and/or managing and/or working in groups.
- Lesson plan you've developed
- Meeting outline or agenda developed by youth
- Scrapbook outlining participation in leadership programs. Includes personal reflection on leadership growth and development.
- Share how you have taken the lead on a service project, and what leadership skills you gained through the project.
- Share how you have served as a mentor and/or teacher to younger youth (could be with a project area, a club activity or officer role, et

What do I have to do to be eligible for the State Fair, State Dog or State Horse Show?

How do I know if I received a State Fair, State Dog or State Horse Show trip?

With a general building project:

1. Have your 4-H enrollment forms turned into the Extension Office.
2. Completed 6th grade or older.
3. Have your County Fair registration entered online by June 28th at 11:59pm.
4. Only blue ribbon projects are eligible for State Fair.
5. Check the "big white poster" in the swine barn after entry day for building exhibits; and after individual livestock shows. Look for your name under projects that you showed in. Some projects have multiple trips so look at where you are in the lineup. Please mark "yes" or "no" if you want to take the trip or not. Remember to check back often as more 4-Hers decline trips. If you are listed as an alternate, you may receive a trip if the persons ahead of you decline their trip.
6. If your name is on the "big white poster", you have to decide whether to accept or turn down the State Fair trip. Record your decision on the poster, and notify the 4-H Fair Office with your decision ASAP. **If you are taking the State Fair trip, pick up your packet of State Fair information from the 4-H Fair Office. Or get one at the state fair meeting.**
7. With a parent or guardian, fill out all information in the State Fair packet. Feel free to stop back at the 4-H Fair Office and ask any questions that you may have.
8. Completed Packets & Payments are due Saturday 6pm to the 4-H Staff at the fairgrounds.

With a livestock (beef, dairy, goat, lama, poultry, rabbit, sheep and swine) project:

1. Have your 4-H enrollment forms turned into the Extension Office
2. Completed 6th grade or older
3. For beef, dairy, goat, lama, sheep, and swine – ear tags are available at the Extension Office for each animal that you will be ID'ing. Put ear tags in animals, record ear tag numbers and animal information on the Animal Affidavit form
4. For rabbits, have your rabbit tattooed, record the tattoo numbers and ID information on the Animal Affidavit ID form.
5. Have your livestock ID form entered into 4-H online by May 15th.
6. Attend Livestock Quality Assurance & Ethics (LQA&E) training every three years. Or complete

online EVERY year. This is a state requirement; you must take LQA&E to be eligible for State Fair.

7. Have your Fair registration entered online by June 28th 11:59pm.
8. Only blue ribbon projects are eligible for State Fair.
9. After each species show is complete, check the "big white poster" in the swine barn. Look for your name under the species that you showed in. The number of trips per species varies so look at where you are in the lineup. Remember to check back often as 4-Hers decline trips. If you are listed as an alternate, you may receive a trip if persons ahead of you have declined their trip.
10. If your name is on the "big white poster", you have to decide whether to accept or turn down the State Fair trip. Please mark "yes" or "no" if you want to take the trip or not. Notify the 4-H Fair Office with your decision ASAP.
11. **If you are taking your State Fair trip, pick up your packet of State Fair information from the 4-H Fair Office. Or get one at the state fair meeting.**
12. With a parent or guardian, fill out all information in the State Fair packet. Feel free to stop back at the 4-H Fair Office and ask any questions that you may have.
13. Completed Packets & Payments are due Saturday 6pm to the 4-H Staff at the fairgrounds.

With a horse project:

1. Have your 4-H enrollment forms turned into the Extension Office
2. Completed 6th grade or older.
3. Have your 4-H Horse Identification Form entered into 4-H online by May 15th.
4. Have your County Fair registration entered online by June 28th 11:59pm.
5. After judging is complete, check the "big white poster" at the 4-H Fair Office in the 4-H building. Look for your name under the horse show.
6. If your name is on the "big white poster", you have to decide whether to accept or turn down the State Horse Show trip. Please mark "yes" or "no" if you want to take the trip or not. Notify the 4-H Fair Office with your decision ASAP.
7. **If you are taking your State Horse trip, pick up your packet of information from the 4-H Fair Office. Or get one at the state fair meeting.**
8. With a parent or guardian, fill out all information in the State Horse packet. Feel free to stop back at the 4-H Fair Office and ask any questions that you may have.
9. Completed Packets & Payments are due Saturday 6pm to the 4-H Staff at the fairgrounds.

With a dog project:

1. Have your 4-H enrollment forms turned into the Extension Office
2. Completed 4th grade or older

3. Have your Dog Project Identification Form entered into 4-H online by May 15th. Attend dog project practices. There are state requirements that agility members need to attend 6 trainings. Discuss with the county 4-H dog leader to make sure you attend as many as necessary.
4. Have your Fair registration entered online by June 28th 11:59pm
5. After judging is complete, check with the 4-H office to see if you received a State Dog Show trip.
6. If you are taking your State Dog Show trip, pick up your packet of information from the 4-H Office.
7. With a parent or guardian, fill out all information in the State Dog Show packet. Feel free to stop

- back at the 4-H office and ask any questions that you may have.
8. Bring completed packet back to the Extension office before 3pm on Monday, August 7th!

**REMEMBER: IT IS YOUR
RESPONSIBILITY TO ASK
QUESTIONS IF YOU ARE
UNCERTAIN ABOUT ANY OF
THIS INFORMATION**

UNIVERSITY OF MINNESOTA
EXTENSION



© 2023, Regents of the University of Minnesota. University of Minnesota Extension is an equal opportunity educator and employer. In accordance with the Americans with Disabilities Act, this publication/material is available in alternative formats upon request. Direct requests to 612-624-2116.