

Typhoon™

OASIS CAR WASH SYSTEMS

OUR STORY

TYPHOON can provide you with the income of two bays from a single automatic. The simultaneous action of five independent wands delivers thorough cleaning power while using a fraction of the time needed by typical in-bay car washes.

Oasis introduced the Adjust-O-Matic in 1985. It was the predecessor to today's Typhoon™ and was the industry's first fully adjusting, in-bay touchless automatic. It set a standard of speed, quality and efficiency held by Oasis' technology to this day. If you are looking to upgrade your existing equipment or invest in the car wash industry for the first time, Oasis has been and will remain the leader in innovative technology.



SPEED

The faster you get cars through the bay, the quicker you head for the bank. The Typhoon™ can wash cars at a rate of up to 40 CARS PER HOUR. Still the fastest in the market today!

ECO-FRIENDLY

Every Typhoon comes with the Eco-Wash environmentally friendly package as standard equipment, offering operators the opportunity to further reduce water and utility requirements resulting in even lower operating costs. Oasis also offers an advanced water reclamation system to conserve water usage and reduce discharge in order to meet standards and regulations at your location.



VERSATILITY

The Typhoon smart technology carefully determines the length and width of each vehicle. This feature allows you, the operator, the versatility to wash anything from the smallest cars to the longest double cab pickups, even dually trucks. Its great functionality also permits the selection of wash cycles just right for each location. Different geographical locations have different needs to produce clean cars and every Oasis product offers that flexibility.

CLEANING

Oasis developed the Typhoon to effectively clean more cars per hour than any other equipment on the market today. Its highly efficient chemical delivery system, along with maximum water impingement, provides optimum wash results. To further enhance cleaning, computer controlled on-board rocker panel blasters and underbody wash are included as standard equipment. Better cleaning ensures customer loyalty.

RELIABILITY

When investing in equipment, reliability year after year is of utmost importance. Hydraulically powered, the Typhoon gear drive system is so reliable we offer a 5 YEAR LIMITED WARRANTY on specific components – a feature unmatched in the industry. The simple design of the Typhoon allows for minimal moving components, which adds to its reliability and longevity. Less downtime equals more profit, year after year.

REMOTELY OPERATE EQUIPMENT

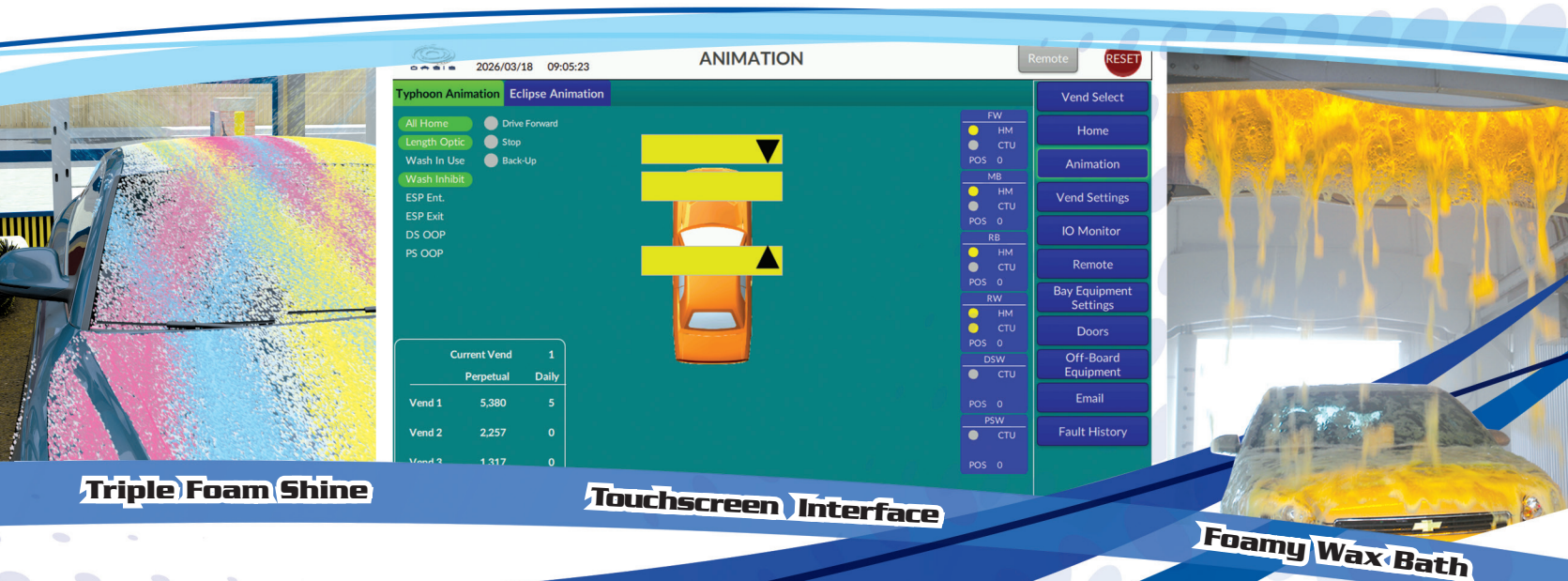
- ✓ 24 Hour Alerts
- ✓ Text or Email
- ✓ Sales Reports
- ✓ Real-Time Interface
- ✓ Operational Alerts
- ✓ Reset Equipment
- ✓ Operate Equipment Remotely
- ✓ *Utilizes Popular Browsers



*not actual screenshot

SYSTEM ENHANCEMENTS

- Electronic Scanning and Positioning
- Triple Foam Shine System
- Onboard Foamy Tire Cleaner
- Spot Free Rinse System
- Heated Presoak
- Oasiswatch Internet Communication Package
- Freeze Prevention Package
- Two-Step Presoak
- In-Bay Pump Package
- Premium Clearcoat Protectant Application
- LED Lighted Wands
- Free Standing Dryer
- Auto Cashier and POS Systems
- Instructional LED Sign Packages
- Floor Mount
- 92" Extended Height Version
- Dual Side Adjust
- Zero Degree Oscillating Nozzles
- Foamy Wax Bath
- Doors
- Bug and Bumper Cleaner
- MyWash Buy Up Technology



Triple Foam Shine

Touchscreen Interface

Foamy Wax Bath

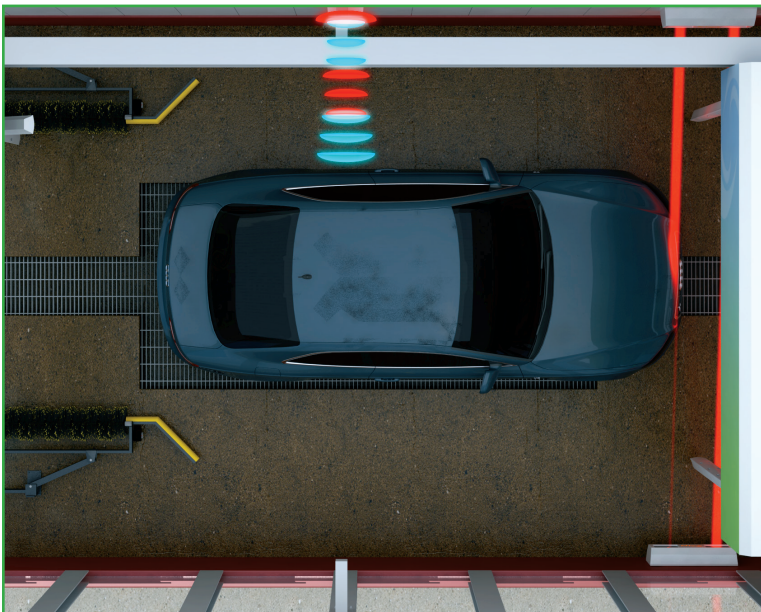
CONSTRUCTION

The Typhoon's customer-friendly, open design makes it easier to enter and exit the wash bay, increasing throughput and making it more visually appealing. The wall-mounted frame and elevated carriage system help protect the unit from strike damage as well as chemicals and grime.

ELECTRONIC SCANNING AND POSITIONING



This virtual stop station "reads" the car's location within the bay while the electronic, or "smart system", eliminates the need for a positioning device on the floor. This feature makes it easier and faster for customers to drive in and out of the wash bay. Increased throughput means increased profit. It also means satisfied returning customers who have no concerns about lining up the car to hit a floor device.



MyWash[®] BUY UP TECHNOLOGY

Gives you the functionality of a Tunnel Wash Controller by allowing your customers to upgrade the wash package they have selected with any additional wash functions they may like to purchase. The system then places all purchased upgrades in the proper position in the wash cycle. This allows your customers to have complete customization of their wash.

System Dimensions

• Bay Dimensions

Height - 12'0" (10'6" minimum)	3.66 meters (3.05 m minimum)
Width - 15'4" (13'9" minimum)	4.57 meters (3.96 m minimum)
Length - 30' (29'6" minimum)	9.14 meters (9.02 m minimum)

• Maximum Vehicle Height

7" standard	2.1 meters
Optional 7' 6" extended height	2.3 meters

• Required Utilities

Electrical:	Voltage	Amps	KVA
	208/230	250	80
	400	150	80
	460	150	80
	575	100	80

50 hertz available. Call factory for details.

Water inlet: 1" @ 50 psi inlet pressure 25.40 mm @ 3.45 bar inlet pressure

• Compressed Air Requirements

Approx 35 CFM @ 110 psi (7.58 bar)



OASIS

Car Wash Systems

OASIS CAR WASH SYSTEMS, INC.

203 North Central City Road Joplin, MO 64801

Phone: 620-783-1355 or 800-892-3537

Fax: 620-783-5735

OASISCARWASHSYSTEMS.COM