

The Oldest Continuous Publication in the House Moving Industry!

HBM

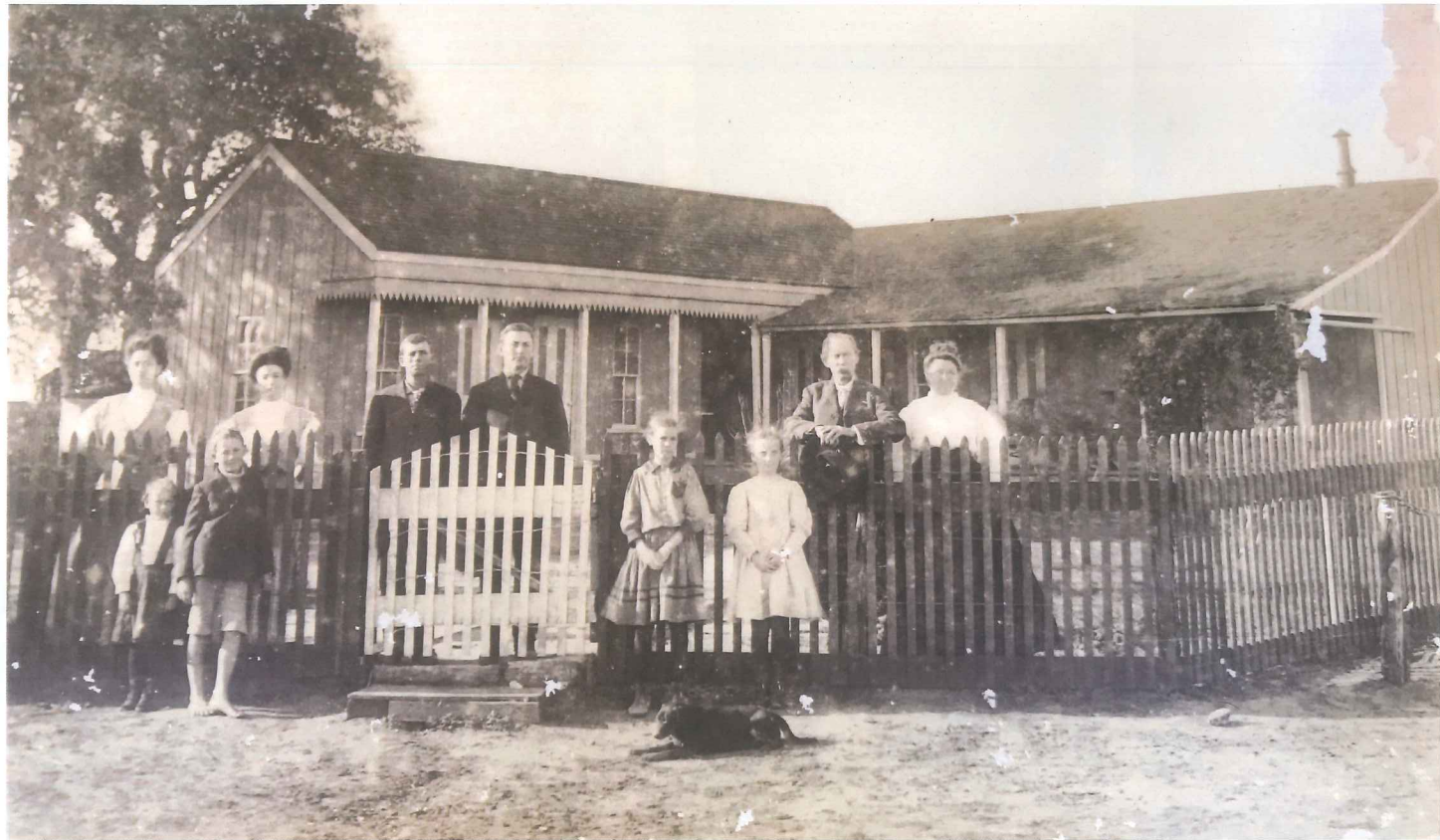
The House & Building Mover

June 2024 • Volume 44, No. 3

Moving a 150 Year Old Farm House

see page 12





Moving the 150 Year Old Farm House.

By John Clegg

In 1874 Dave R. and Ella Jane May built a home on their ranch near Berclair in Goliad County, Texas. Initially there were two rooms. Several descendants, of multiple generations were born in those rooms. As the family grew, three bedrooms, a dining room, and a kitchen were added.

The children became adults and the ranch was divided among nine siblings. The youngest son Harry May, made the farm house his homestead. Harry's daughters inherited his portion of the May Farm and

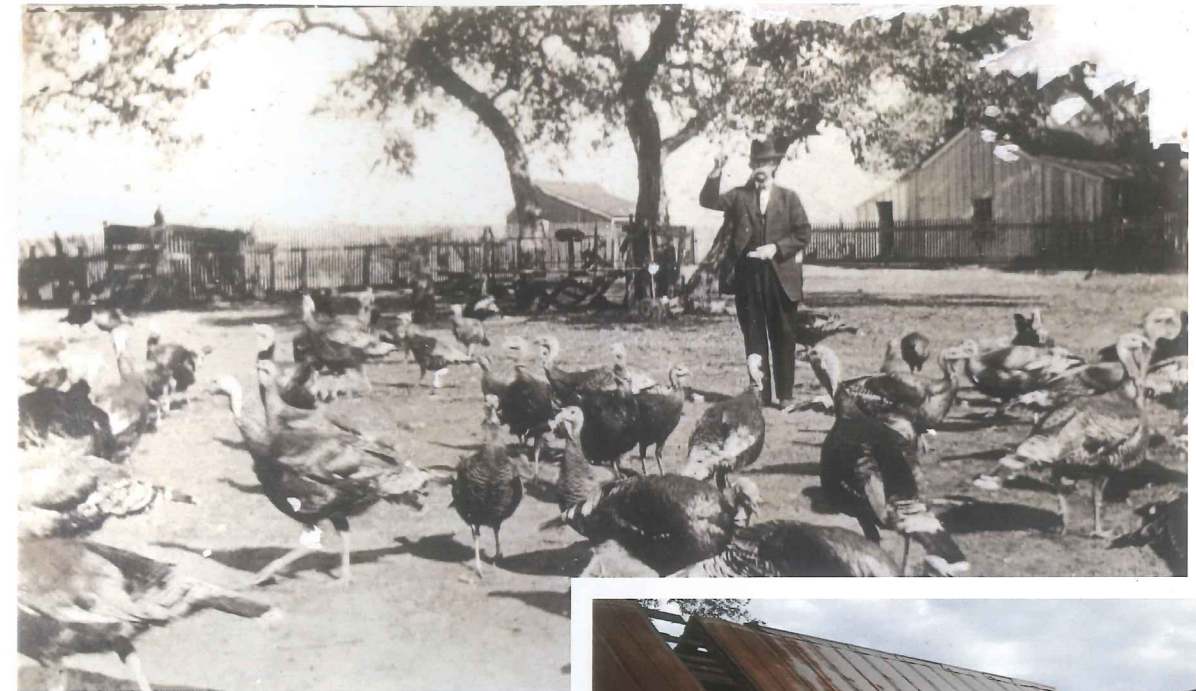
the house and continued farming and ranching on the property.

In the 1980's, having kept the agricultural operation going for more than one hundred years, the family registered the property as a "Century Farm" with the state of Texas. Today, the May Farm is owned and operated by Dave and Ella Jane's direct descendants, and the old farm house turns one hundred and fifty years this year.

We had to remove the fireplace and brace the porch. We had to cut the house into four pieces to be able to make the trip. We had one narrow bridge along the route.

We used our Telkamp Texas Speeder dollies. These dollies have the ability to raise and lower. We raised the dollies to get over the guard rails.

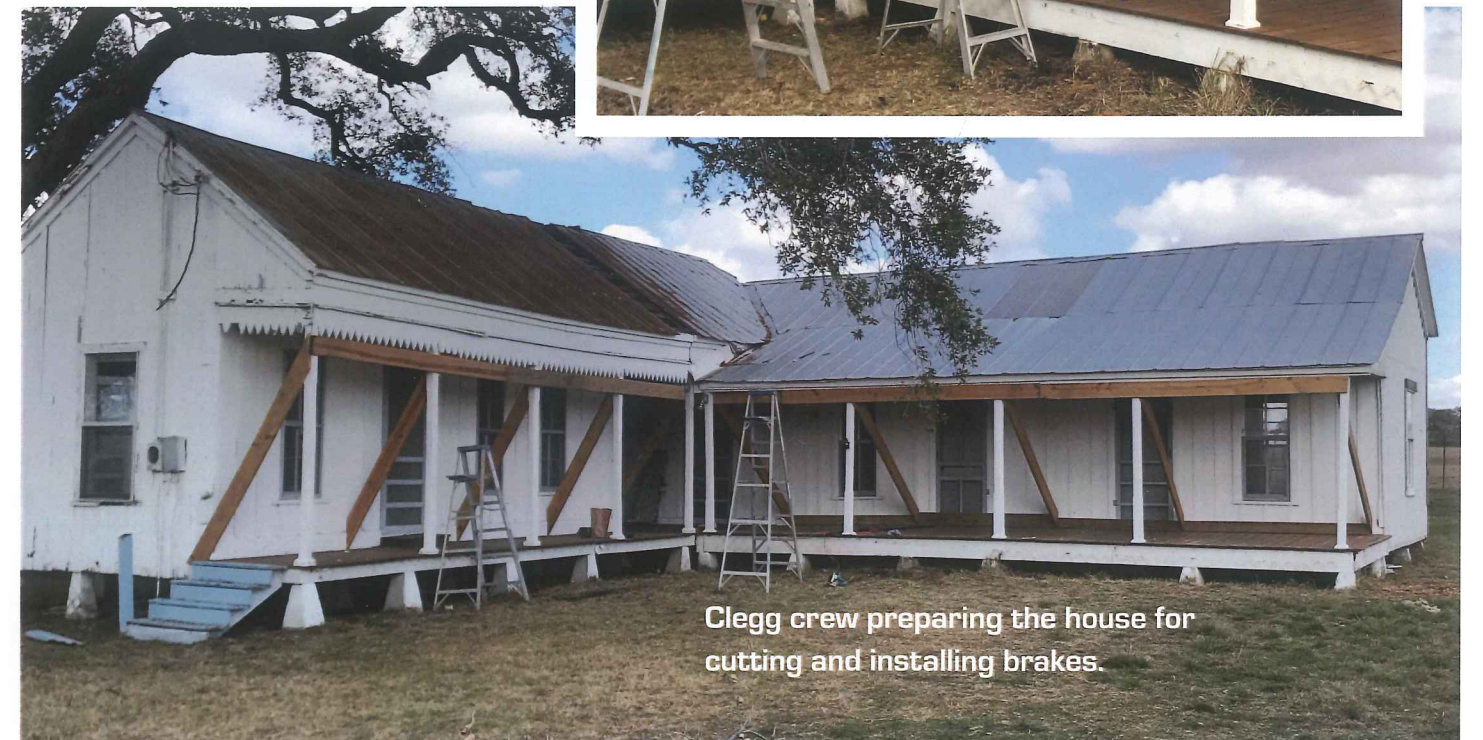
(Article continues through page 22)



Papa May and his bunch of turkeys at the old home.



Adding braces.



Clegg crew preparing the house for cutting and installing braces.



Disassembling the chimney.

This was the first job using our new 8 port power pack, built by JSJS.



Cross-loaders installed, using our tall stacks that we use all the time.



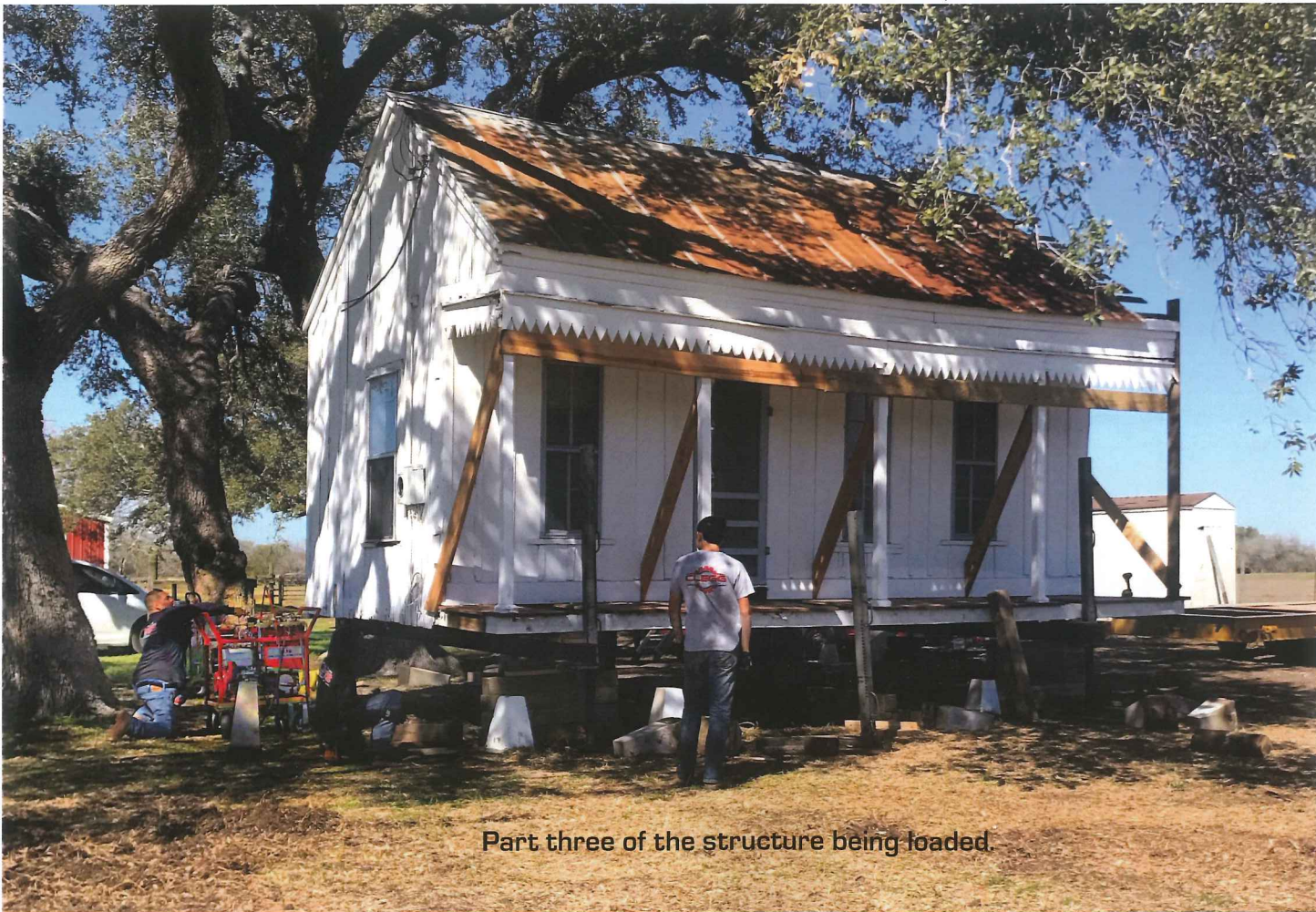
Loading section #1 onto our heavy-duty mod carrier. We like this trailer because it's low to the ground.

A New Farmhouse!

"The house was moved 15 miles, traveling from Berclair, Texas to Beeville, Texas. The entire operation took one month."



We were able to haul two sections on our mod trailer.



Part three of the structure being loaded.



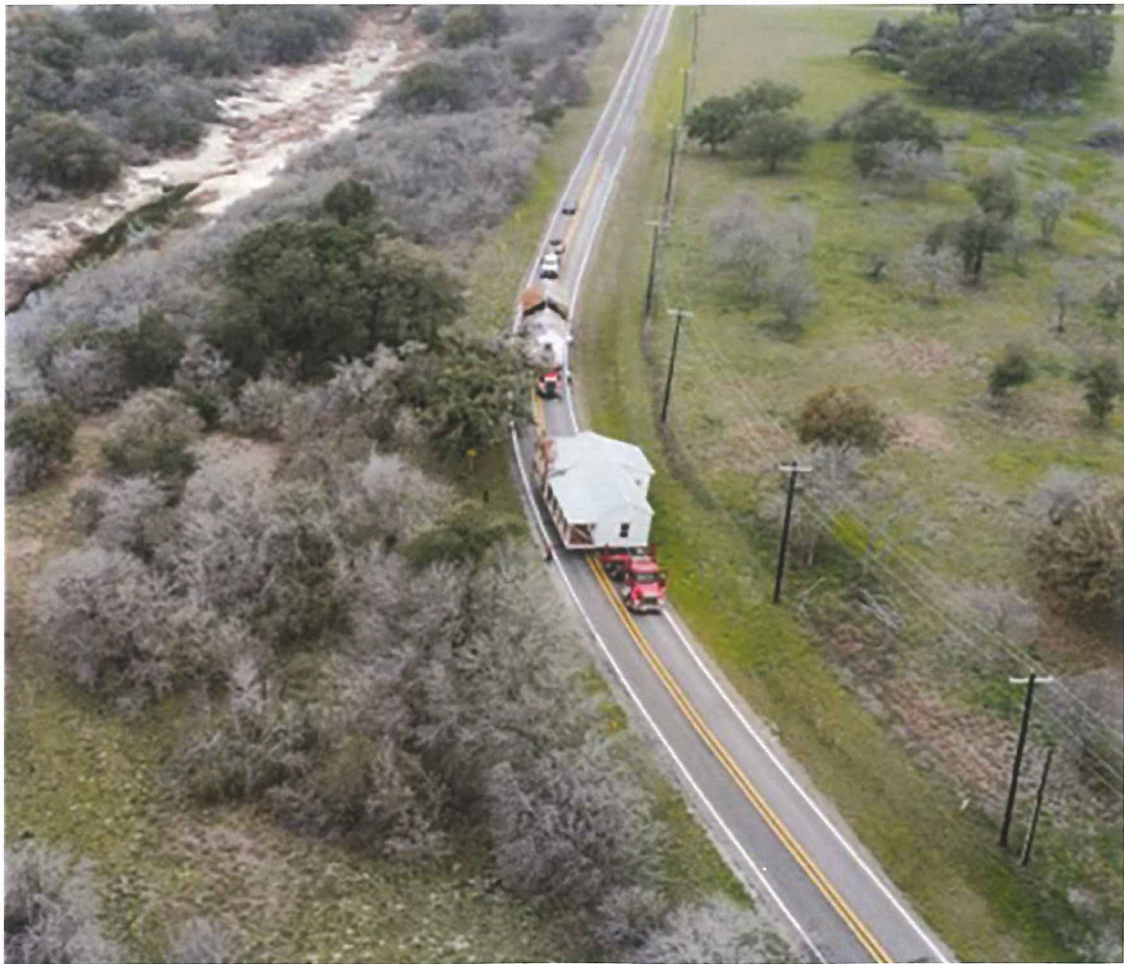
We used our hydraulic header, great for going up and over the bridge railing and then back down low to get under wires. We also used our Texas speeder dollies.



Heading Out!



Ready to proceed to destination!



The way to Beeville!



Going across the pasture toward the highway. First stop for our new Peterbilt truck.



Left to right is Trey Whiddon, David Whiddon (new owner) Perry Juno, Diane Juno (seller) and Diane's big sister Jane. Diane and Jane are descendants of the May family.

"The entire project went well. We always enjoy working with, and for our great customers. We look forward to seeing the completed project next year."



Ready to lower onto the new piers.

Distributing blocks with our Bobcat.



Since 1971
Clegg
Services, LTD.
Sales · Rental · Transporting

Call Us: 361-578-0293
info@cleggind.com