

# Seventeenth Sunday in Ordinary Time – July 26, 2026

## Opening:

### The Kingdom of God



1. The king - dom of God is jus - tice and joy;
2. The king - dom of God is mer - cy and grace;
3. The king - dom of God is chal - lenge and choice:
4. God's king - dom is come, the gift and the goal;



For Je - sus re - stores what sin would de - stroy.  
The cap - tives are freed, the sin - ners find place,  
Be - lieve the good news, re - pent and re - joyce!  
In Je - sus be - gun, in heav - en made whole.



God's pow - er and glo - ry in Je - sus we know;  
The out - cast are wel - comed God's ban - quet to share;  
God's love for us sin - ners brought Christ to his cross:  
The heirs of the king - dom shall an - swer his call;



And here and here - af - ter the king - dom shall grow.  
And hope is a - wak - ened in place of de - spair.  
Our cri - sis of judge - ment for gain or for loss.  
And all things cry "Glo - ry!" to God all in all.

Text: Bryn A. Rees, 1911–1983, © 1973, Alexander Scott  
Tune: LAUDATE DOMINUM, 10 10 11 11; Charles H. H. Parry, 1848–1918

## Psalm:



**R. Lord, I love your com - mands.**

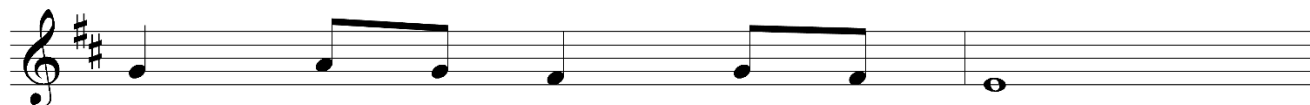
Text © 1969, 1981, 1997, ICEL. All rights reserved. Used with permission.  
Music: Owen Alstott, © 1977, 1990, OCP. All rights reserved.

# Preparation:

## Seek Ye First



Seek ye first the king - dom of God  
Ask, and it shall be gi - ven un - to you,  
You do not live by bread a - lone,  
Where two or three are gath - ered in my name,



and seek his right - eous - ness,  
but seek, and you shall find,  
there by ev - 'ry word,  
I am I in their midst;



and all these things shall be add - ed un - to you;  
knock, and the door shall be o - pened un - to you;  
that comes forth from the mouth of God;  
and what - so - ev - er you ask I will do;



Al - le - lu, al - le - lu - ia.  
Al - le - lu, al - le - lu - ia.  
Al - le - lu, al - le - lu - ia.  
Al - le - lu, al - le - lu - ia.

Text: Matthew 6:33, 7:7; adapt. By Karen Lafferty, b. 1948

Tune: SEEK YE FIRST, Irregular; Karen Lafferty, b. 1948

© 1972, Universal Music – Brentwood Benson Publishing/CCCM Music

# Communion:

## Eye Has Not Seen

Refrain



Eye has not seen, ear has not heard what God has read-y for



those who love him; Spir-it of love, come, give us the mind of



Je - sus, teach us the wis-dom of God.

Verses 1-3



1. When pain and sor - row weigh us down, be near to us, O
2. Our lives are but a sin - gle breath, we flow-er and we
3. To those who see with eyes of faith, the Lord is ev - er



Lord, for - give the weak - ness of our faith, and  
fade, yet all our days are in your hands, so  
near, re - flect - ed in the fac - es of

D.C.



bear us up with - in your peace-ful word.  
we re - turn in love what love has made.  
all the poor and low - ly of the world.

Verse 4



4. We sing a mys-t'ry from the past in halls where saints have



trod, yet ev - er new the mu - sic rings to



Je - sus, Liv - ing Song of God.

D.C.

# Closing:

## Lead Me, Guide Me

### Refrain

Lead me, guide me, a - long the way, For if you  
lead me, I can - not stray. Lord, let me walk each  
day with thee. Lead me, O Lord, lead me.

The musical notation for the Refrain is in 3/4 time, B-flat major, and consists of three staves. The first staff contains the melody for the first line of lyrics. The second staff contains the melody for the second line of lyrics, featuring a triplet of eighth notes. The third staff contains the melody for the third line of lyrics, ending with a double bar line.

### Verses

1. I am weak and I need thy strength and pow'r to  
2. Help me tread in the paths of right - eous - ness, Be my  
3. I am lost if you take your hand from me, I am  
help me o - ver my weak - est hour. Help me through the  
aid when Sa - tan and sin op - press. I am put - ting  
blind with - out thy Light to see. Lord, just al - ways

The musical notation for the Verses is in 3/4 time, B-flat major, and consists of two staves. The first staff contains the melody for the first line of lyrics, featuring a triplet of eighth notes. The second staff contains the melody for the second line of lyrics, ending with a double bar line.

dark-ness thy face to see. Lead me, O Lord, lead me.  
all my trust in thee. Lead me, O Lord, lead me.  
let me thy ser - vant be. Lead me, O Lord, lead me.

D.C.

The musical notation for the D.C. section is in 3/4 time, B-flat major, and consists of one staff. It contains the melody for the final line of lyrics, ending with a double bar line.

Text: Doris M. Akers, 1922-1995  
Tune: Doris M. Akers, 1922-1995; harm. by Richard Smallwood, b.1948  
© 1953, (renewed), arr. © 2011, Doris M. Akers, admin. by Chappell & Co., Inc.