

PRODUCT DESCRIPTION

FEATURES/BENEFITS

- OneTouch push-to-connect configuration allows for an instant tubing connection
- All PC models are useful for piping in confined space, due to its six-angle wrench processing inside
- Immediate strong engineering plastic (pOM) sleeve disconnection by pressing the sleeve and then simply removing tube from fitting
- Fittings are already equipped with Teflon treatment or oring on the thread
- Nickel-plated brass body ensures anti-contamination properties for an extended product life

SPECIFICATION

- Applicable Fluid Type /AIR (No other type of gas or liquid)
- Working Pressure Range /0~150PSI / 0~9.9Kgf/cm²(0~990KPa)
- Negative Pressure /29.5in HQ / 750mmHg(750Torr)
- Working Temperature Range /32~140F /0~60C

ORDER

PLACING AN ORDER OR REQUEST

Specifying Standard Items:

Please specify the following:

1. Series(Item)Number
2. Tube Outside Dia.
3. Thread Size

THREAD SIZE

01:1/8" / N01:1/8"NPT / G01:1/8"BSPP

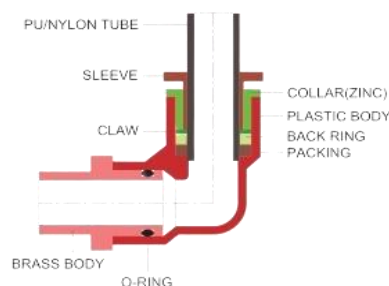
02:1/4" / N02:1/4"NPT / G02:1/4"BSPP

03:3/8" / N03:3/8"NPT / G03:3/8"BSPP

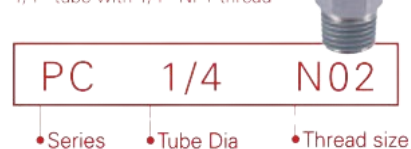
04:1/2" / N04:1/2"NPT / G04:1/2"BSPP

Example of a request

PL series one touch fitting,
8mm tube with 1/4" BSPT thread



PC series one touch fitting,
1/4" tube with 1/4" NPT thread



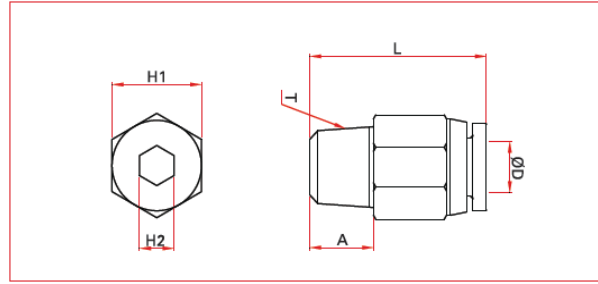
SC series G type one touch fitting,
8mm tube with 1/4" BSPP thread



ONE-TOUCH FITTINGS

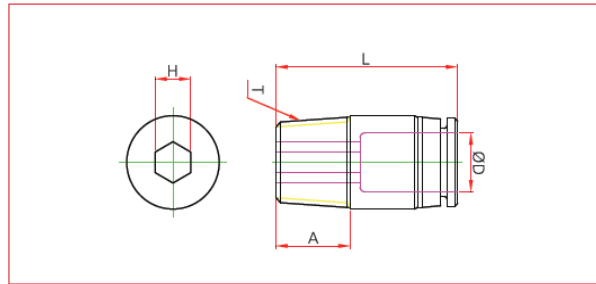
>METRIC SYSTEM

PC male straight



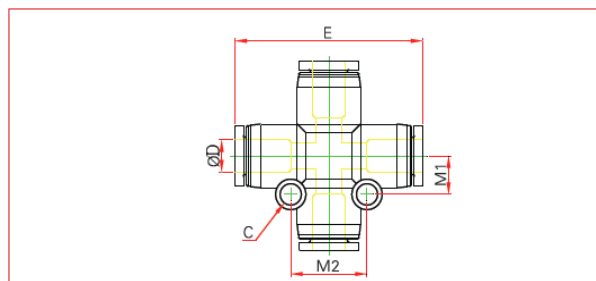
MODEL	ØD	T (Thread)	L	A	H1 (HEX)	H2 (HEX)	Q'ty per bag	Q'ty per box
PC 0401	4	PT 1/8	20.5	8	10	3	10	100
PC 0402	4	PT 1/4	19	10	14	3	10	100
PC 0403	4	PT 3/8	20	11	17	3	10	100
PC 04M5	4	M5xP0.8	20	3.5	10	2	10	100
PC 04M6	4	M6xP1.0	20	4	10	2	10	100
PC 0601	6	PT 1/8	21.3	8	12	4	10	100
PC 0602	6	PT 1/4	23	10	14	4	10	100
PC 0603	6	PT 3/8	21	11	17	4	10	100
PC 0604	6	PT 1/2	25	14	21	4	10	50
PC 06M5	6	M5xP0.8	21	3.5	12	2	10	100
PC 06M6	6	M6xP1.0	21	4	12	2	10	100
PC 0801	8	PT 1/8	26	8	14	5	10	100
PC 0802	8	PT 1/4	25	10	14	5	10	100
PC 0803	8	PT 3/8	22	11	17	5	10	100
PC 0804	8	PT 1/2	26	14	21	5	10	50
PC 1001	10	PT 1/8	30	8	17	5	10	100
PC 1002	10	PT 1/4	31.5	10	17	6	10	50
PC 1003	10	PT 3/8	29	11	17	8	10	50
PC 1004	10	PT 1/2	27	14	21	8	10	50
PC 1201	12	PT 1/8	31.5	8	21	5	10	50
PC 1202	12	PT 1/4	32.8	10	21	6	10	50
PC 1203	12	PT 3/8	30.6	11	21	8	10	50
PC 1204	12	PT 1/2	31.6	14	21	8	10	50
PC 1401	14	PT 1/8	31.5	8	22	5	10	50
PC 1402	14	PT 1/4	33.5	10	22	6	10	50
PC 1403	14	PT 3/8	34	11	22	8	10	50
PC 1404	14	PT 1/2	32.5	14	22	10	10	50
PC 1601	16	PT 1/8	33.5	8	24	5	10	50
PC 1602	16	PT 1/4	35.5	10	24	6	10	50
PC 1603	16	PT 3/8	36.5	11	24	8	5	25
PC 1604	16	PT 1/2	36.5	14	24	10	5	25

POC Round male straight



MODEL	ØD	T (Thread)	L	A	H(HEX)	Q'ty per bag	Q'ty per box
POC 0401	4	PT 1/8	20.5	8	3	10	100
POC 0402	4	PT 1/4	19	10	3	10	100
POC 0403	4	PT 3/8	19.5	11	3	10	100
POC 04M5	4	M5xP0.8	20.5	3.5	2	10	100
POC 04M6	4	M6xPI .0	20.9	4	2	10	100
POC 0601	6	PT 1/8	21	8	4	10	100
POC 0602	6	PT 1/4	23	10	4	10	100
POC 0603	6	PT 3/8	20.7	11	4	10	100
POC 0604	6	PT 1/2	24.7	14	4	10	50
POC 06M5	6	M5x P 0.8	21	3.5	2	10	100
POC 06M6	6	M6xPI .0	21	4	2	10	100
POC 0801	8	PT 1/8	25.7	8	5	10	100
POC 0802	8	PT 1/4	25	10	5	10	100
POC 0803	8	PT 3/8	22	11	5	10	100
POC 0804	8	PT 1/2	26	14	5	10	50
POC 1001	10	PT 1/8	30	8	5	10	100
POC 1002	10	PT 1/4	31.5	10	6	10	100
POC 1003	10	PT 3/8	29	11	8	10	50
POC 1004	10	PT 1/2	26.7	14	8	10	50
POC 1201	12	PT 1/8	30.6	8	5	10	50
POC 1202	12	PT 1/4	33	10	6	10	50
POC 1203	12	PT 3/8	30.6	11	8	10	50
POC 1204	12	PT 1/2	32.8	14	8	10	50
POC 1603	16	PT 3/8	36.7	11	8	5	25
POC 1604	16	PT 1/2	36.7	14	10	5	25

PZA union cross

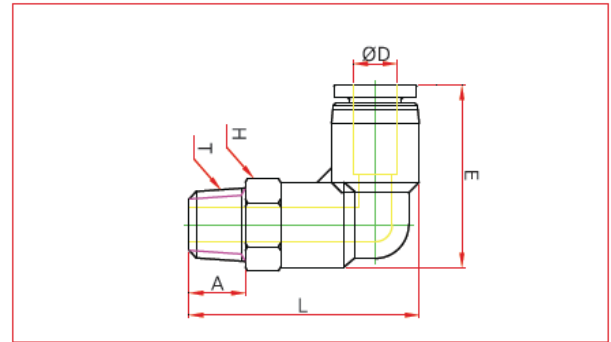


MODEL	ØD	M1	M2	E	C	Q'ty per bag	Q'ty per box
PZA 04	4	7.4	14.8	36.5	3.2	10	50
PZA 06	6	7.9	15.8	38	3.2	10	50
PZA 08	8	9	18	44.8	3.2	5	25
PZA 10	10	11.8	23.5	56.8	4.2	5	20
PZA 12	12	13.3	26.6	58.6	4.2	5	15

ONE-TOUCH FITTINGS

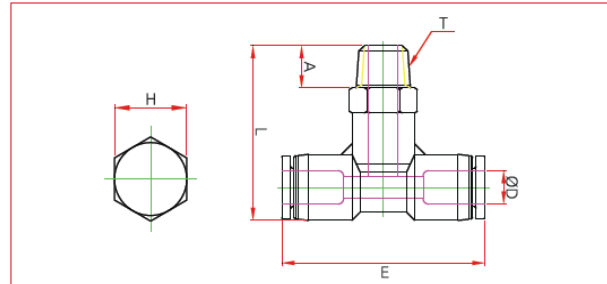
>METRIC SYSTEM

PL male elbow



MODEL	ØD	T (Thread)	E	L	A	H (HEX)	Q'ty per bag	Q'ty per box
PL 0401	4	PT 1/8	23.5	30.3	8	10	10	100
PL 0402	4	PT 1/4	23.5	32.7	10	14	10	100
PL 0403	4	PT 3/8	23.5	34	11	17	10	100
PL 04M5	4	M5xP0.8	23.5	26.5	4	10	10	100
PL 04M6	4	M6xP1.0	23.5	27	4	10	10	100
PL 0601	6	PT 1/8	24	31.5	8	12	10	100
PL 0602	6	PT 1/4	24.5	33.9	10	14	10	50
PL 0603	6	PT 3/8	24	35.2	11	17	10	50
PL 0604	6	PT 1/2	24.5	38.7	14	21	10	50
PL 06M5	6	M5xP0.8	24	28.2	4	12	10	100
PL 06M6	6	M6xP1.0	24	28.7	4	12	10	100
PL 0801	8	PT 1/8	29	35	8	14	10	50
PL 0802	8	PT 1/4	29	37	10	14	10	50
PL 0803	8	PT 3/8	29	38.3	11	17	10	50
PL 0804	8	PT 1/2	29.5	41.8	14	21	10	50
PL 1001	10	PT 1/8	36.5	41.8	8	17	10	50
PL 1002	10	PT 1/4	36.5	43.8	10	17	10	50
PL 1003	10	PT 3/8	36.5	44.8	11	17	10	50
PL 1004	10	PT 1/2	36.5	48.3	14	21	5	25
PL 1201	12	PT 1/8	39	44.3	8	19	5	25
PL 1202	12	PT 1/4	39	46.3	10	17	5	25
PL 1203	12	PT 3/8	39	48.3	11	17	5	25
PL 1204	12	PT 1/2	39	50.8	14	21	5	25
PL 1402	14	PT 1/4	39	47	10	19	5	25
PL 1403	14	PT 3/8	39	49	11	19	5	25
PL 1404	14	PT 1/2	39	51.5	14	21	5	25
PL 1603	16	PT 3/8	41	51.7	11	19	5	25
PL 1604	16	PT 1/2	41	54.2	14	21	5	25

PT male branch tee

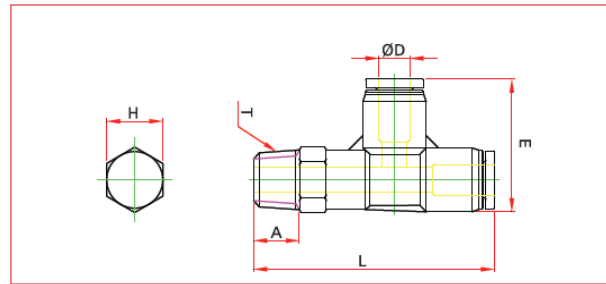


MODEL	ØD	T (Thread)	E	L	A	H (HEX)	Q'ty per bag	Q'ty per box
PT 0401	4	PT 1/8	37	29.9	8	10	10	50
PT 0402	4	PT 1/4	37	32	10	14	10	50
PT 0403	4	PT 3/8	37	33.8	11	17	10	50
PT 04M5	4	M5xP0.8	37	26.3	4	10	10	100
PT 04M6	4	M6xP1.0	37	26.8	4	10	10	100
PT 0601	6	PT 1/8	38	31.5	8	12	10	50
PT 0602	6	PT 1/4	38	34	10	14	10	50
PT 0603	6	PT 3/8	38	35.6	11	17	10	50
PT 0604	6	PT 1/2	38	39.2	14	21	5	25
PT 06M5	6	M5xP0.8	38	28.4	4	12	10	50
PT 06M6	6	M6xP1.0	38	28.6	4	12	10	50
PT 0801	8	PT 1/8	44.5	35	8	14	10	50
PT 0802	8	PT 1/4	44.5	37	10	14	10	50
PT 0803	8	PT 3/8	44.5	38.6	11	17	10	50
PT 0804	8	PT 1/2	44.5	42.9	14	21	5	25
PT 1001	10	PT 1/8	56.5	42.2	8	17	5	25
PT 1002	10	PT 1/4	56.5	44.5	10	17	5	25
PT 1003	10	PT 3/8	56.5	45.5	11	17	5	25
PT 1004	10	PT 1/2	56.5	48.9	14	21	5	20
PT 1201	12	PT 1/8	58	44.2	8	19	5	25
PT 1202	12	PT 1/4	58	46.3	10	19	5	25
PT 1203	12	PT 3/8	58	48.3	11	19	5	25
PT 1204	12	PT 1/2	58	50.5	14	21	5	20
PT 1402	14	PT 1/4	60.5	47.4	10	19	5	20
PT 1403	14	PT 3/8	60.5	49.6	11	19	5	20
PT 1404	14	PT 1/2	60.5	52	14	21	5	20
PT 1603	16	PT 3/8	61.5	55.7	11	19	3	12
PT 1604	16	PT 1/2	61.5	58.5	14	21	3	12

ONE-TOUCH FITTINGS

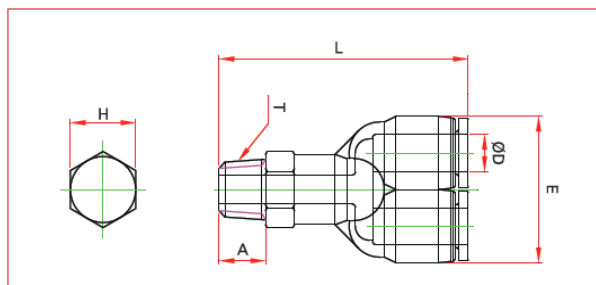
>METRIC SYSTEM

PST male run tee



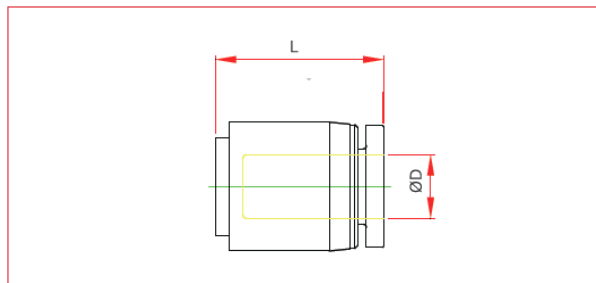
MODEL	ØD	T (Thread)	L	E	A	H (HEX)	Q'ty per bag	Q'ty per box
PST 0401	4	PT 1/8	43	24	8	10	10	50
PST 0402	4	PT 1/4	45	24	10	14	10	50
PST 0403	4	PT 3/8	46	24	11	17	10	50
PST 04M5	4	M5xP0.8	39	24	4	10	10	100
PST 04M6	4	M6xP1.0	39	24	4	10	10	100
PST 0601	6	PT 1/8	44	25.5	8	12	10	50
PST 0602	6	PT 1/4	46.5	25.5	10	14	10	50
PST 0603	6	PT 3/8	47.5	25.5	11	17	10	50
PST 0604	6	PT 1/2	50.5	25.5	14	21	10	50
PST 06M5	6	M5xP0.8	41	25.5	4	12	10	100
PST 06M6	6	M6xP1.0	41	25.5	4	12	10	100
PST 0801	8	PT 1/8	50.5	29.5	8	14	10	50
PST 0802	8	PT 1/4	52.5	29.5	10	14	10	50
PST 0803	8	PT 3/8	53.5	29.5	11	17	10	50
PST 0804	8	PT 1/2	56.5	29.5	14	21	5	25
PST 1001	10	PT 1/8	62	38	8	17	5	25
PST 1002	10	PT 1/4	64	38	10	17	5	25
PST 1003	10	PT 3/8	65	38	11	17	5	25
PST 1004	10	PT 1/2	68	38	14	21	5	20
PST 1201	12	PT 1/8	63.5	40	8	17	5	25
PST 1202	12	PT 1/4	65.5	40	10	17	5	25
PST 1203	12	PT 3/8	66.5	40	11	17	5	25
PST 1204	12	PT 1/2	69.5	40	14	21	5	20
PST 1402	14	PT 1/4	66	42	10	19	5	20
PST 1403	14	PT 3/8	67	42	11	19	5	20
PST 1404	14	PT 1/2	71.5	42	14	21	5	20

PWT male Y



MODEL	ØD	T (Thread)	L	E	A	H (HEX)	Q'ty per bag	Q'ty per box
PWT 0401	4	PT 1/8	42	22	8	10	10	50
PWT 0402	4	PT 1/4	45	22	10	14	10	50
PWT 0403	4	PT 3/8	46	22	11	17	10	50
PWT 04M5	4	M5x P 0.8	39	22	4	10	10	100
PWT 04M6	4	M6x P 1.0	39	22	4	10	10	100
PWT 0601	6	PT 1/8	45	26	8	12	10	50
PWT 0602	6	PT 1/4	47	26	10	14	10	50
PWT 0603	6	PT 3/8	48	26	11	17	10	50
PWT 0604	6	PT 1/2	51	26	14	21	5	25
PWT 06M5	6	M5x P 0.8	41	26	4	12	10	50
PWT 06M6	6	M6xP 1.0	41	26	4	12	10	50
PWT 0801	8	PT 1/8	47	30	8	14	10	50
PWT 0802	8	PT 1/4	49	30	10	14	10	50
PWT 0803	8	PT 3/8	50	30	11	17	10	50
PWT 0804	8	PT 1/2	54	30	14	21	5	25
PWT 1001	10	PT 1/8	57	37	8	17	5	25
PWT 1002	10	PT 1/4	59	37	10	17	5	25
PWT 1003	10	PT 3/8	60	37	11	17	5	25
PWT 1004	10	PT 1/2	63	37	14	21	5	20
PWT 1201	12	PT 1/8	60	42.5	8	19	5	20
PWT 1202	12	PT 1/4	62	42.5	10	19	5	20
PWT 1203	12	PT 3/8	63	42.5	11	19	5	20
PWT 1204	12	PT 1/2	66	42.5	14	21	5	20
PWT 1603	16	PT 3/8	65.5	51.5	11	19	3	15
PWT 1604	16	PT 1/2	69	51.5	14	21	3	15

PPF cap

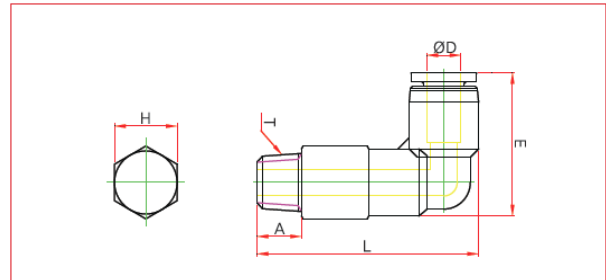


MODEL	ØD	L	Q'ty per bag	Q'ty per box
PPF 04	4	18	10	100
PPF 06	6	19	10	100
PPF 08	8	21	10	100
PPF 10	10	24	10	50
PPF 12	12	25	10	50
PPF 16	16	27.5	5	25

ONE-TOUCH FITTINGS

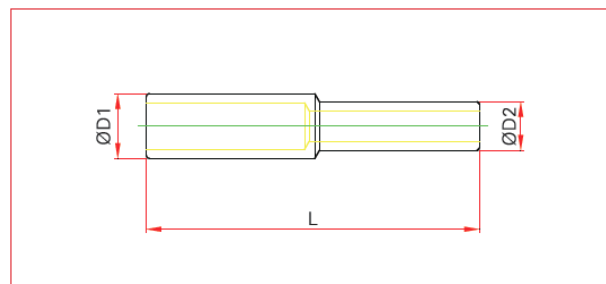
>METRIC SYSTEM

PLL extended male elbow



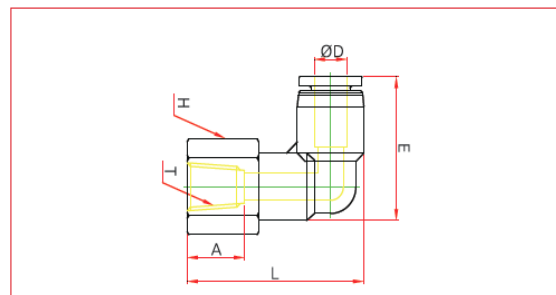
MODEL	ØD	T (Thread)	E	L	A	H (HEX)	Q'ty per bag	Q'ty per box
PLL 0401	4	PT 1/8	23.5	40.3	8	10	10	50
PLL 0402	4	PT 1/4	23.5	44	10	14	10	50
PLL 0403	4	PT 3/8	23.5	44	11	17	10	50
PLL 04M5	4	M5x p0.8	23.5	37	4	10	10	100
PLL 04M6	4	M6xP1.0	23.5	37	4	10	10	100
PLL 0601	6	PT 1/8	25	43.5	8	12	10	50
PLL 0602	6	PT 1/4	25	45.9	10	14	10	50
PLL 0603	6	PT 3/8	25	47.2	11	17	10	50
PLL 0604	6	PT 1/2	25	50.7	14	21	10	50
PLL 06M5	6	M5x P0.8	25	41.2	4	12	10	100
PLL 06M6	6	M6X P1.0	25	41.2	4	12	10	100
PLL 0801	8	PT 1/8	30	49	8	14	10	50
PLL 0802	8	PT 1/4	30	51	10	14	10	50
PLL 0803	8	PT 3/8	30	52.3	11	17	10	50
PLL 0804	8	PT 1/2	30	55.8	14	21	5	25
PLL 1001	10	PT 1/8	36	58.5	8	17	5	25
PLL 1002	10	PT 1/4	36	60.8	10	17	5	25
PLL 1003	10	PT 3/8	36	61.8	11	17	5	25
PLL 1004	10	PT 1/2	36	65.3	14	21	5	25
PLL 1202	12	PT 1/4	38.5	70	10	19	5	25
PLL 1203	12	PT 3/8	38.5	68.3	11	19	5	25
PLL 1204	12	PT 1/2	38.5	68	14	21	5	25

PIG



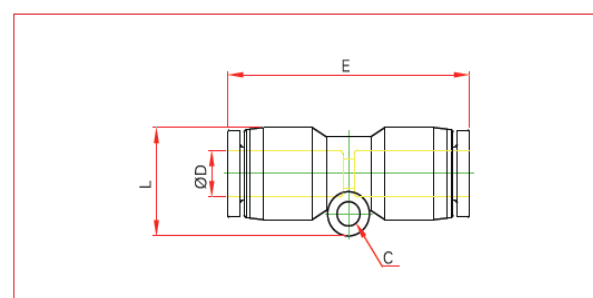
MODEL	ØD1	ØD2	L	Q'ty per bag	Q'ty per box
PIG 0604	6	4	36	10	100
PIG 0804	8	4	37.5	10	100
PIG 0806	8	6	39	10	100
PIG 1006	10	6	41.5	10	100
PIG 1008	10	8	43	10	100
PIG 1208	12	8	44.5	10	100
PIG 1210	12	10	48	10	100
PIG 1612	16	12	54	10	100

PLF extended female elbow



MODEL	ØD	T (Thread)	L	E	A	H (HEX)	Q'ty per bag	Q'ty per box
PLF 04-01	4	PT 1/8	28.5	23.5	8	14	10	50
PLF 0402	4	PT 1/4	31	23.5	11	17	10	50
PLF 04M5	4	M5x P 0,8	24.5	23.5	7	10	10	100
PLF 04M6	4	M6x p 1.0	24.5	23.5	7	10	10	100
PLF 0601	6	PT 1/8	29.5	25	8	14	10	50
PLF 0602	6	PT 1/4	32	25	10	17	10	50
PLF 0603	6	PT 3/8	33.5	25	11	21	10	50
PLF 0604	6	PT 1/2	36.5	25	14	24	10	50
PLF 06M5	6	M5x P0.8	25.5	25	7	10	10	100
PLF 06M6	6	M6xp1.0	25.5	25	7	10	10	100
PLF 0801	8	PT 1/8	33	29.5	8	14	10	50
PLF 0802	8	PT 1/4	35.5	29.5	10	17	10	50
PLF 0803	8	PT 3/8	37	29.5	11	21	10	50
PLF 0804	8	PT 1/2	40	29.5	14	24	5	25
PLF 1001	10	PT 1/8	34.5	36	8	17	5	25
PLF 1002	10	PT 1/4	41	36	10	17	5	25
PLF 1003	10	PT 3/8	43	36	11	21	5	25
PLF 1004	10	PT 1/2	46	36	14	24	5	20
PLF 1201	12	PT 1/8	44.5	38.5	11	19	5	20
PLF 1202	12	PT HE	44.5	38.5	10	19	5	20
PLF 1203	12	PT 3/8	45	39.5	12	21	5	20
PLF 1204	12	PT 1/2	49	37.6	14	24	5	20

PUC union straight

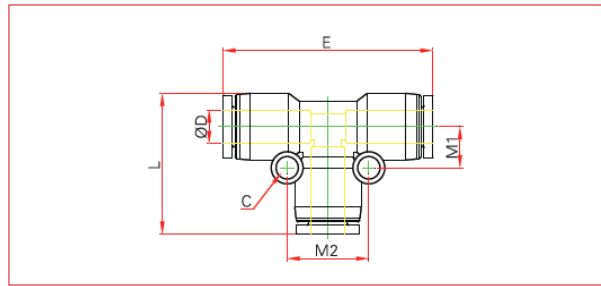


MODEL	ØD	E	Q'ty per bag	Q'ty per box
PUC 04	4	33	10	100
PUC 06	6	34.5	10	100
PUC 08	8	38.5	10	50
PUC 10	10	48.5	10	50
PUC 12	12	49	5	25
PUC 14	14	51.5	5	25
PUC 16	16	63.5	5	25

ONE-TOUCH FITTINGS

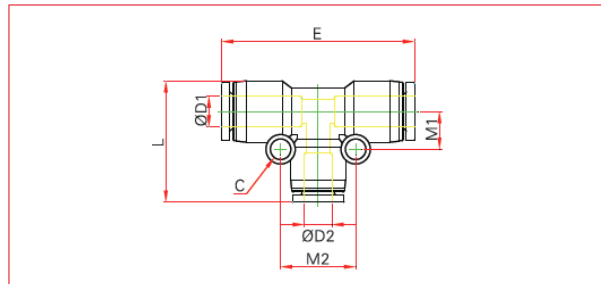
>METRIC SYSTEM

PUT union tee



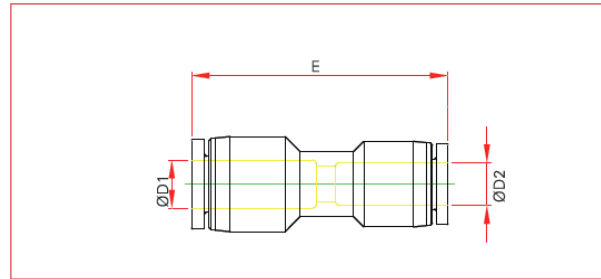
MODEL	ØD	E	L	M1	M2	C	Q'ty per bag	Q'ty per box
PUT 04	4	36.5	24	7	14	3.2	10	100
PUT 06	6	37.5	25.5	8	16	3.2	10	50
PUT 08	8	44.5	29.5	9	18	3.2	10	50
PUT 10	10	57	37	12	24	4.2	5	25
PUT 12	12	58	39	13.5	27	4.2	5	25
PUT 14	14	60.7	42.5	13.5	27	4.2	5	20
PUT 16	16	64	45	14	28	4.2	3	15

PGT reducer tee



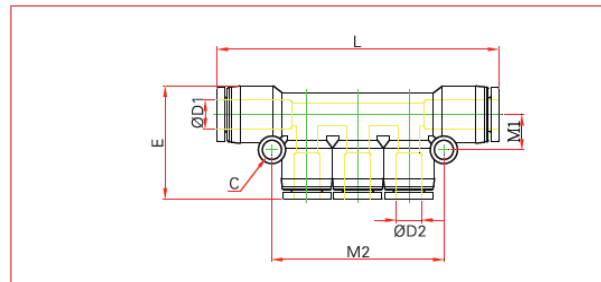
MODEL	ØD1	ØD2	L	E	C	M1	M2	Q'ty per bag	Q'ty per box
PGT 0406	4	6	24.5	37.5	3.2	6.9	13.8	10	50
PGT 0408	4	8	28	41	3.2	8.3	16.6	10	50
PGT 0604	6	4	25.5	38	3.2	8.0	13.8	10	50
PGT 0608	6	8	28	41	3.2	8.3	16.6	10	50
PGT 0610	6	10	34	44.5	4.2	8.4	22	10	50
PGT 0804	8	4	29.5	43.5	3.2	9.0	16.6	10	50
PGT 0806	8	6	29.5	43.5	3.2	9.0	16.6	10	50
PGT 0810	8	10	34.5	48	4.2	9.2	22	5	25
PGT 0812	8	12	35.2	48.5	4.2	9.2	24.6	5	25
PGT 1006	10	6	31.5	53	4.2	11	16.8	5	25
PGT 1008	10	8	32	56	4.2	11	18.4	5	25
PGT 1012	10	12	38.2	58	4.2	11	24.6	5	25
PGT 1208	12	8	35	56	4.2	12.3	18.4	5	25
PGT 1210	12	10	39	57.5	4.2	12.3	18.4	5	25
PGT 1412	14	12	41	60.5	4.2	14.5	26.5	5	20
PGT 1612	16	12	44.5	65	4.2	14.6	24.6	3	15
PGT 1614	16	14	46	65	4.2	14.0	28	3	15

PG reducer



MODEL	ØD1	ØD2	E	Q'ty per bag	Q'ty per box
PG 0604	6	4	34	10	100
PG 0804	8	4	36.5	10	100
PG 0806	8	6	36.5	10	50
PG 1006	10	6	43	10	50
PG 1008	10	8	43	10	50
PG 1208	12	8	47	10	50
PG 1210	12	10	49	5	25
PG 1412	14	12	51	5	25
PG 1612	16	12	64	5	25
PG 1614	16	14	65	5	25

PKG reducer triple branch union

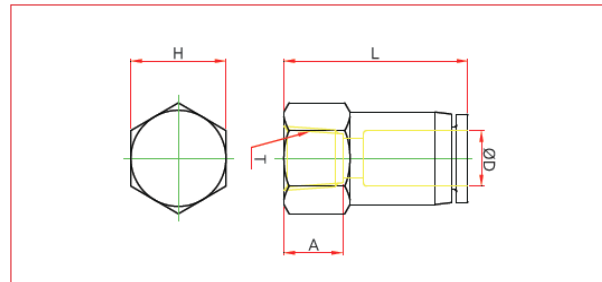


MODEL	ØD1	ØD2	M1	M2	L	E	C	Q'ty per bag	Q'ty per box
PKG 0404	4	4	9	41.5	59	27	3.2	5	25
PKG 0606	6	6	9	41.5	59.5	27	3.2	5	25
PKG 0808	8	8	12	47.8	79.5	33	4.2	5	20
PKG 1010	10	10	12	56.5	90.9	38	3.5	5	15
PKG 1212	12	12	15.5	67.5	99.4	40	4.5	5	15
PKG 0604	6	4	9	41.5	59.5	27	3.2	5	25
PKG 0804	8	4	9	41.5	61	27	3.2	5	25
PKG 0806	8	6	9	41.5	61	27	3.2	5	25
PKG 1006	10	6	12	47.8	81	33	4.2	5	25
PKG 1008	10	8	12	47.8	81	33	4.2	5	20
PKG 1208	12	8	15.5	59.5	91.8	37	4.5	5	15
PKG 1210	12	10	15.5	59.5	91.8	38	4.5	5	15

ONE-TOUCH FITTINGS

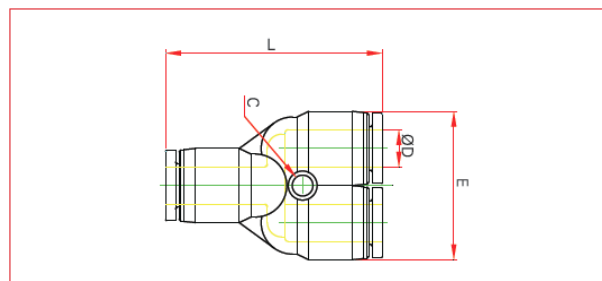
>METRIC SYSTEM

PCF female straight



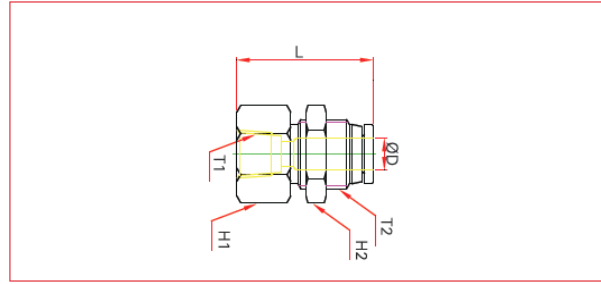
MODEL	ØD	T	L	A	H (HEX)	Q'ty per bag	Q'ty per box
PCF 04-M5	4	M5x P0.8	21	5	10	10	100
PCF 04-01	4	PT 1/8	23.5	8.5	14	10	100
PCF 04-02	4	PT 1/4	26.5	10	17	10	100
PCF 06-M5	6	M5x P0.8	20.5	5	12	10	100
PCF 06-01	6	PT 1/8	25	8.5	14	10	100
PCF 06-02	6	PT 1/4	27	10	17	10	100
PCF 06-03	6	PT 3/8	28	12	20	10	50
PCF 06-04	6	PT 1/2	30	13	24	10	50
PCF 08-01	8	PT 1/8	26	8.5	14	10	100
PCF 08-02	8	PT 1/4	28.5	10	17	10	100
PCF 08-03	8	PT 3/8	30	12	20	10	50
PCF 08-04	8	PT 1/2	32	13	24	10	50
PCF 10-01	10	PT 1/8	30	8.5	17	10	50
PCF 10-02	10	PT 1/4	32	11	17	10	50
PCF 10-03	10	PT 3/8	33	11	20	10	50
PCF 10-04	10	PT 1/2	35	13	24	10	50
PCF 12-02	12	PT 1/4	35	11	21	10	50
PCF 12-03	12	PT 3/8	35	12	21	10	50
PCF 12-04	12	PT 1/2	37.5	14	24	5	25
PCF 16-03	16	PT 3/8	36.5	11	24	5	25
PCF 16-04	16	PT 1/2	38.5	13	24	5	25

PY union y



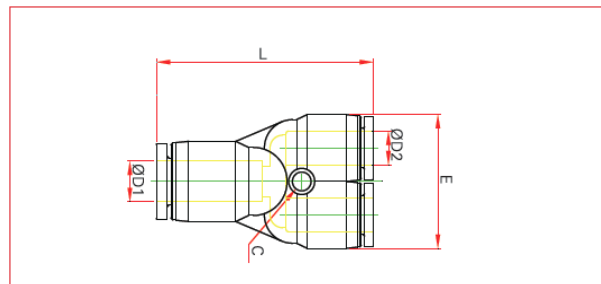
MODEL	ØD	L	E	C	Q'ty per bag	Q'ty per box
PY 04	4	35.5	22	3.2	10	100
PY 06	6	37	26	3.2	10	50
PY 08	8	39.5	30	3.2	10	50
PY 10	10	50.5	37	4.2	5	25
PY 12	12	52.5	42	4.2	5	25
PY 16	16	55.5	51.5	4.2	3	15

PMF bulkhead
female straight



MODEL	ØD1	T1 (Thread)	T2	L	H1 (HEX)	H2 (HEX)	Q'ty per bag	Q'ty per box
PMF 0401	4	PT 1/8	M12xP1.0	24	14	14	10	100
PMF 0402	4	PT 1/4	M12xP1.0	26.5	17	14	10	100
PMF 0601	6	PT 1/8	M14xP1.0	25	17	17	10	100
PMF 0602	6	PT 1/4	M14xP1.0	27	17	17	10	100
PMF 0603	6	PT 3/8	M14xP1.0	28	19	17	10	50
PMF 0801	8	PT 1/8	M16xP1.0	26	19	19	10	50
PMF 0802	8	PT 1/4	M16xP1.0	29	19	19	10	50
PMF 0803	8	PT 3/8	M16xP1.0	29.5	19	19	10	50
PMF 0804	8	PT 1/2	M16xP1.0	31.5	24	19	5	25
PMF 1001	10	PT 1/8	M20xP1.0	30.5	24	24	10	50
PMF 1002	10	PT 1/4	M20xP1.0	33	24	24	10	50
PMF 1003	10	PT 3/8	M20xP1.0	34	24	24	10	50
PMF 1004	10	PT 1/2	M20xP1.0	37	24	24	5	25
PMF 1202	12	PT 1/4	M22xP1.0	34	27	27	5	25
PMF 1203	12	PT 3/8	M22xP1.0	34	27	27	5	25
PMF 1204	12	PT 1/2	M22xP1.0	36	27	27	5	25

PW redu

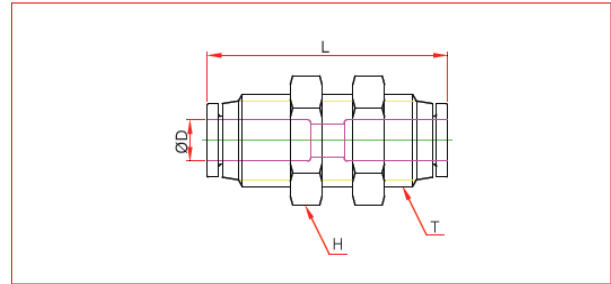


MODEL	ØD1	ØD2	L	E	C	Q'ty per bag	Q'ty per box
PW 0604	6	4	36	22	3.2	10	100
PW 0804	8	4	37	26	3.2	10	50
PW 0806	8	6	37	26	3.2	10	50
PW 1006	10	6	43.5	29	3.2	10	50
PW 1008	10	8	43	29	3.2	10	50
PW 1208	12	8	50	36.5	4.2	5	25
PW 1210	12	10	51	36.5	4.2	5	25
PW 1612	16	12	54.5	51.5	4.2	5	15
PW 1614	16	14	55	51.5	4.2	5	15

ONE-TOUCH FITTINGS

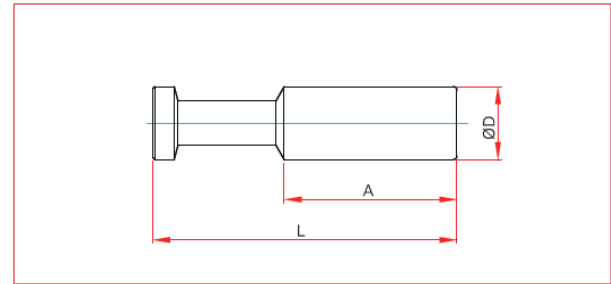
>METRIC SYSTEM

PMM bulkhead union



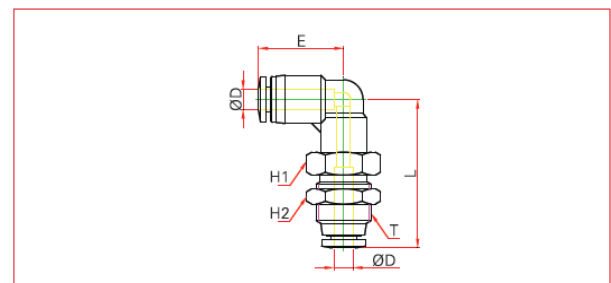
MODEL	ØD	T	L	H (HEX)	Q'ty per bag	Q'ty per box
PMM 04	4	M12xP1.0	30.5	14	10	100
PMM 06	6	M14xP1.0	31	17	10	100
PMM 08	8	M16xP1.0	35	19	10	50
PMM 10	10	M20xP1.0	41	24	5	25
PMM 12	12	M22xP1.0	44	27	5	25

PP Plug



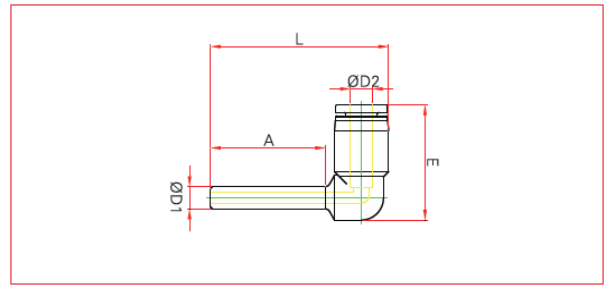
MODEL	ØD	L	A	Q'ty per bag	Q'ty per box
PP 04	4	28	15	10	100
PP 06	6	33	17	10	100
PP 08	8	36	18	10	100
PP 10	10	42.5	22	10	100
PP 12	12	43	22	10	100
PP 16	16	49	24.5	10	50

PLM bulkhead union elbow



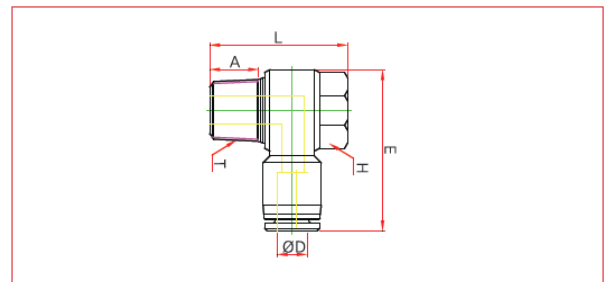
MODEL	ØD	T	L	E	H1 (Hex)	H2 (Hex)	Q'ty per bag	Q'ty per box
PLM 04	4	M12xP1.0	33.5	23	14	14	10	50
PLM 06	6	M14xP1.0	38	24	17	17	10	50
PLM 08	8	M16xP1.0	43	29	19	19	10	50
PLM 10	10	M20xP1.0	50	36	24	24	5	25
PLM 12	12	M22xP1.0	57	38	27	27	5	25

PLJ plug-in elbow



MODEL	ØD1	ØD2	L	E	A	Q'ty per bag	Q'ty per box
PLJ 04	4	4	38	23.5	20.5	10	100
PLJ 06	6	6	41	24	22	10	100
PLJ 08	8	8	46.5	29.5	24	10	50
PLJ 10	10	10	55	36	25.5	10	50
PLJ 12	12	12	59	37	27	5	25
PLJ 16	16	16	72	45	32.5	5	25
PLJ 0604	6	4	39.5	23.5	22	10	100
PLJ 0806	8	6	43.5	24	24	10	100
PLJ 1008	10	8	49	29.5	25.5	10	50
PLJ 1210	12	10	59.5	36	27	5	25

PH male

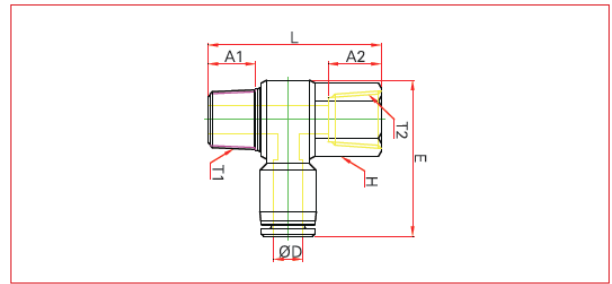


MODEL	ØD	T (Thread)	E	L	A	H (HEX)	Q'ty per bag	Q'ty per box
PH 04-01	4	PT 1/8	29	23.6	7	12	10	50
PH 04-02	4	PT 1/4	34	26.5	8.5	14	10	50
PH 04-M5	4	M5xP0.8	25	17.5	4	8	10	100
PH 04-M6	4	M6xP1.0	25	17.5	4	8	10	100
PH 06-01	6	PT 1/8	30	23	7	12	10	50
PH 06-02	6	PT 1/4	34	26.5	9.5	14	10	50
PH 06-03	6	PT 3/8	38	32	10.5	19	5	25
PH 06-04	6	PT 1/2	46	39.1	14	24	5	25
PH 06-M5	6	M5xP0.8	26.5	17.5	4	8	10	100
PH 06-M6	6	M6xP1.0	26.5	17.5	4	8	10	100
PH 08-01	8	PT 1/8	32	24	7	12	10	50
PH 08-02	8	PT 1/4	37	26.5	9.5	14	10	50
PH 08-03	8	PT 3/8	40	32	10.5	19	5	25
PH 08-04	8	PT 1/2	46	39.1	14	24	5	25
PH 10-01	10	PT 1/8	37.5	24	7	12	10	50
PH 10-02	10	PT 1/4	41	26.5	9.5	14	10	50
PH 10-03	10	PT 3/8	43.5	32	10.5	19	5	25
PH 10-04	10	PT 1/2	50	39.1	14	24	5	20
PH 12-02	12	PT 1/4	42.5	26.5	8.5	14	5	25
PH 12-03	12	PT 3/8	46	32	10.5	19	5	25
PH 12-04	12	PT 1/2	50	39.1	14	24	5	20

ONE-TOUCH FITTINGS

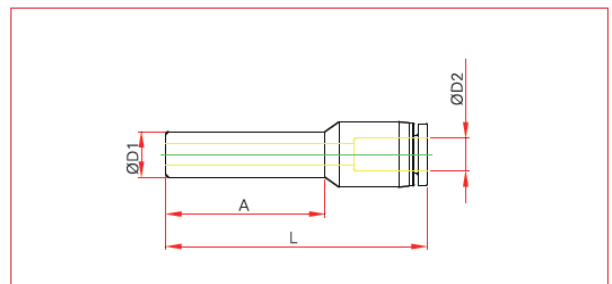
>METRIC SYSTEM

PHF female banjo



MODEL	ØD	T1	T2	L	E	A1	A2	H (Hex)	Q'ty per bag	Q'ty per box
PHF 04-M5	4	M5xP0.8	M5xP0.8	20	25	4	5	8	10	100
PHF 04-M6	4	M6xP1.0	M6xP1.0	20.8	25	4	5	8	10	100
PHF 04-01	4	PT 1/8	PT 1/8	28	29.5	7.5	6.5	14	10	50
PHF 04-02	4	PT 1/4	PT 1/4	33	33	9.5	8.5	17	10	50
PHF 06-M5	6	M5xP0.8	M5xP0.8	20	26.5	4	5	8	10	100
PHF 06-M6	6	M6xP1.0	M6xP1.0	20.8	26.5	4	5	8	10	100
PHF 06-01	6	PT 1/8	PT 1/8	28	30	7.5	6.5	14	10	50
PHF 06-02	6	PT 1/4	PT 1/4	33	34	9.5	8.5	17	10	50
PHF 06-03	6	PT 3/8	PT 3/8	40	38	10.5	9.5	21	5	25
PHF 06-04	6	PT 1/2	PT 1/2	46.6	46	14	11.5	24	5	25
PHF 08-01	8	PT 1/8	PT 1/8	28	32.5	7.5	6.5	14	10	50
PHF 08-02	8	PT 1/4	PT 1/4	33	37.5	9.5	8.5	17	10	50
PHF 08-03	8	PT 3/8	PT 3/8	38.9	40	10.5	9.5	21	5	25
PHF 08-04	8	PT 1/2	PT 1/2	46.6	46	14	11.5	24	5	25
PHF 10-01	10	PT 1/8	PT 1/8	28	37	7.5	6.5	14	5	25
PHF 10-02	10	PT 1/4	PT 1/4	33	41	9.5	8.5	17	5	25
PHF 10-03	10	PT 3/8	PT 3/8	38.9	43.5	10.5	9.5	21	5	25
PHF 10-04	10	PT 1/2	PT 1/2	46.6	49.5	14	11.5	24	5	15
PHF 12-02	12	PT 1/4	PT 1/4	33	42.5	9.5	8.5	17	5	25
PHF 12-03	12	PT 3/8	PT 3/8	38.9	46	10.5	9.5	21	5	20
PHF 12-04	12	PT 1/2	PT 1/2	46.6	50	14	11.5	24	5	15

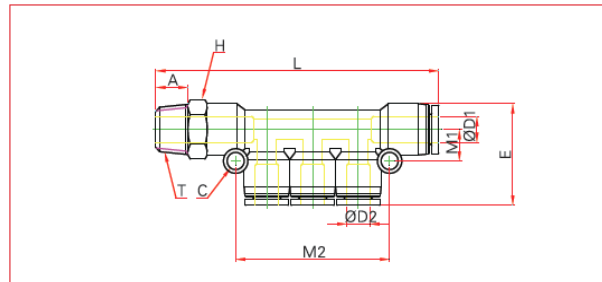
PGJ plug-in reducer



MODEL	ØD1	ØD2	L	A	Q'ty per bag	Q'ty per box
PGJ 06-04	6	4	38.5	22	10	100
PGJ 08-04	8	4	39	25	10	100
PGJ 08-06	8	6	42	25	10	100
PGJ 10-06	10	6	41	26.5	10	100
PGJ 10-08	10	8	45.5	26.5	10	100
PGJ 12-06	12	6	40	26.5	10	100
PGJ 12-08	12	8	43	26.5	10	50
PGJ 12-10	12	10	51	26.5	10	50

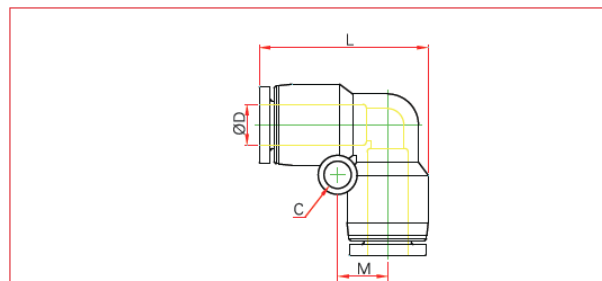
PKD

male reducer
triple branch



MODEL	ØD1	ØD2	L	E	M1	M2	C	A	H (Hex)	T	Q'ty per bag	Q'ty per box
PKD 04-01	4	4	68	27	9	41.5	3.2	8	10	PT 1/8	5	25
PKD 04-02	4	4	70.4	27	9	41.5	3.2	8	10	PT 1/4	5	25
PKD 0604-01	6	4	68	27	9	41.5	3.2	8	12	PT 1/8	5	25
PKD 0604-02	6	4	70.5	27	9	41.5	3.2	8	12	PT 1/4	5	25
PKD 0804-01	8	4	68.5	27	9	41.5	3.2	8	14	PT 1/8	5	25
PKD 0804-02	8	4	70.5	27	9	41.5	3.2	10	14	PT 1/4	5	25
PKD 06-01	6	6	68	27	9	41.5	3.2	8	12	PT 1/8	5	25
PKD 06-02	6	6	70.5	27	9	41.5	3.2	10	14	PT 1/4	5	25
PKD 0806-01	8	6	68	27	9	41.5	3.2	8	14	PT 1/8	5	25
PKD 0806-02	8	6	70.5	27	9	41.5	3.2	10	14	PT 1/4	5	25
PKD 08-02	8	8	88.5	33	12	47.8	4.2	10	14	PT 1/4	5	25
PKD 08-03	8	8	89.3	33	12	47.8	4.2	11	17	PT 3/8	5	25
PKD 1006-02	10	6	89.5	33	12	47.8	4.2	10	17	PT 1/4	5	20
PKD 1006-03	10	6	90.3	33	12	47.8	4.2	11	17	PT 3/8	5	20
PKD 1008-02	10	8	89.5	33	12	47.8	4.2	10	17	PT 1/4	5	15
PKD 1008-03	10	8	90.3	33	12	47.8	4.2	11	17	PT 3/8	5	15
PKD 10-02	10	10	98.7	37.5	12	56.5	4.5	10	17	PT 1/4	5	15
PKD 10-03	10	10	100	37.5	12	56.5	4.5	11	17	PT 3/8	5	15
PKD 10-04	10	10	103.5	37.5	12	56.5	4.5	14	21	PT 1/2	5	15
PKD 1208-03	12	8	100	37	15.5	59.5	4.5	11	19	PT 3/8	5	15
PKD 1208-04	12	8	103.5	37	15.5	59.5	4.5	14	21	PT 1/2	5	15
PKD 1210-03	12	10	100	38	15.5	59.5	4.5	11	19	PT 3/8	5	15
PKD 1210-04	12	10	103.5	38	15.5	59.5	4.5	14	21	PT 1/2	5	15
PKD 12-03	12	12	104.5	39.7	15.5	67.5	4.5	11	19	PT 3/8	5	15
PKD 12-04	12	12	107.5	39.7	15.5	67.5	4.5	14	21	PT 1/2	5	15

PUL unior

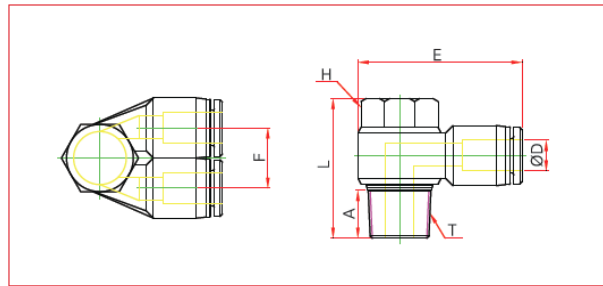


MODEL	ØD1	L	M	C	Q'ty per bag	Q'ty per box
PUL 04	4	24	7	3.2	10	100.0
PUL 06	6	25	8	3.2	10	100.0
PUL 08	8	29	9	3.2	10	50.0
PUL 10	10	37	12	4.2	10	50.0
PUL 12	12	40	13.5	4.2	5	25.0
PUL 14	14	41.5	13.5	4.2	5	25.0
PUL 16	16	45.5	14	5.2	5	25.0

ONE-TOUCH FITTINGS

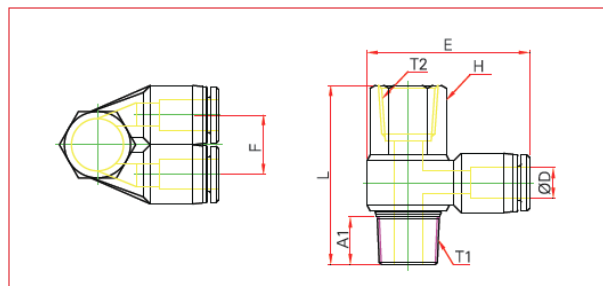
>METRIC SYSTEM

PA dual male banjo



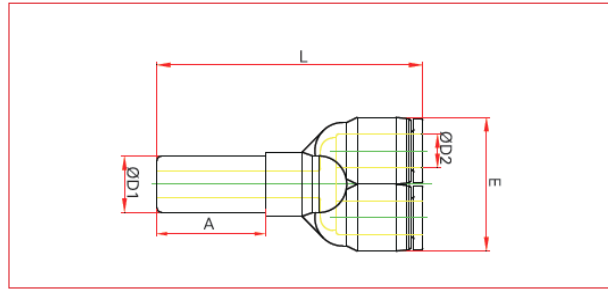
MODEL	ØD	T1	E	L	F	A	H (Hex)	Q'ty per bag	Q'ty per box
PA 04M5	4	M5*P0.8	27.3	17.5	11	3.5	8	10	100
PA 0601	6	PT 1/8	31.2	23	13	7.5	12	10	50
PA 0801	8	PT 1/8	33	22.7	14.4	7.5	12	10	50
PA 0802	8	PT 1/4	37.2	26.2	14.4	9.5	14	5	25
PA 1002	10	PT 1/4	40.3	26.2	18.4	9.5	14	5	25
PA 1003	10	PT 3/8	44.2	32	18.4	10.5	19	5	25
PA 1203	12	PT 3/8	45	32	21	10.5	19	5	20
PA 1204	12	PT 1/2	50.8	39	21	14	24	5	20

PAF dual female banjo



MODEL	ØD	T1/T2	E	L	F	A1	H (Hex)	Q'ty per bag	Q'ty per box
PAF 04M5	4	M5*P 0.8	27.3	20	11	3.5	8	10	100
PAF 0601	6	PT 1/8	31.2	28	13	7.5	14	10	50
PAF 0801	8	PT 1/8	33	28	14.4	7.5	14	10	50
PAF 0802	8	PT 1/4	37.2	33	14.4	9.5	17	5	25
PAF 1002	10	PT 1/4	40.3	33	18.4	9.5	17	5	25
PAF 1003	10	PT 3/8	44.2	38.9	18.4	10.5	21	5	20
PAF 1203	12	PT 3/8	45	39.9	21	10.5	21	5	15
PAF 1204	12	PT 1/2	50.8	46.6	21	14	24	5	10

PYJ plug-in J



MODEL	ØD1	ØD2	L	A	E	Q'ty per bag	Q'ty per box
PYJ 5/32	5/32	5/32	52	20.5	22	10	50
PYJ 1/4-5/32	1/4	1/4	54	22	22	10	50
PYJ 1/4	1/4	1/4	54.5	22	26	10	50
PYJ 5/16-1/4	5/16	5/16	56.5	24	26	10	50
PYJ 5/16	5/16	5/16	59	24	29.5	10	50
PYJ 3/8-5/16	3/8	3/8		25.5	29.5	5	25
PYJ 3/8	3/8	3/8	69.5	25.5	37	5	25
PYJ 1/2-3/8	1/2	1/2	73.5	27	37	5	25
PYJ 1/2	1/2	1/2	74	27	42	5	20

PRODUCT DESCRIPTION

FEATURES/BENEFITS

- Accurate regulation of an optimal airflow rate for precise motion control
- Compact design provides comparable range of speed to larger ones
- Control out and control in types are available for all models
- All PT and NPT threads are sealant pre-coated

APPLICATION

- A valve controls the speed of the air pressure actuator
- Mainly installed for the movement of machines such as cylinders, air actuators, etc

SPECIFICATION

- Applicable Fluid Type /AIR (No other type of gas or liquid)
- Working Pressure Range / 0~150PSI / 0~9.9Kgf/cm²(0~990KPa)
- Negative Pressure 129.5in Hg / 750mmHg(750Torr)
- Working Temperature Range 132F~140F/ 0C~60C
- Available for meter in or meter out control

ORDER

PLACING AN ORDER OR REQUEST

Specifying Standard Items:

Please specify the following:

1. Series(Item)Number
2. Tube Outside Dia.
3. Thread Size

THREAD SIZE

01:1/8" / N01:1/8"NPT / G01:1/8"BSPP

02:1/4" / N02:1/4"NPT / G02:1/4"BSPP

03:3/8" / N03:3/8"NPT / G03:3/8"BSPP

04:1/2" / N04:1/2"NPT / G04:1/2"BSPP

Example of a request

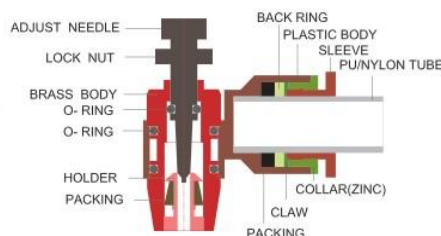
SC series one touch fitting,
8mm tube with 1/4" BSPT thread



SC series one touch fitting,
1/4" tube with 1/4" NPT thread



SC series G type one touch fitting,
8mm tube with 1/4" BSPP thread



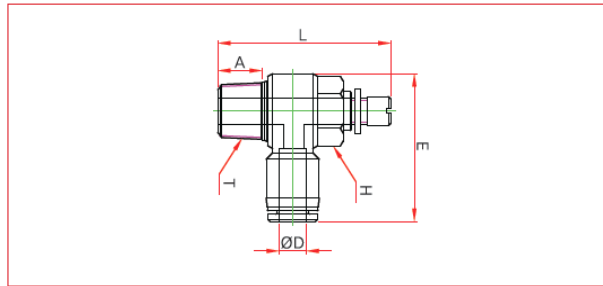
SPEED CONTROLLERS

>METRIC SYSTEM

meterout control (blue sleeve), meterin control (red sleeve)

SC

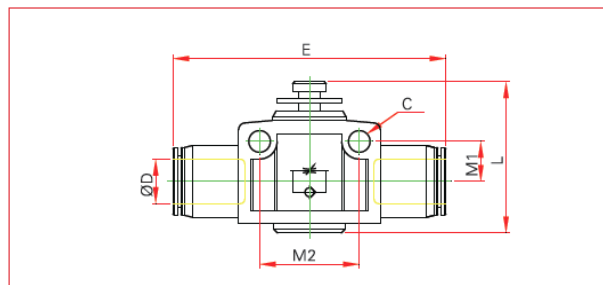
elbow
swivel rotating type



MODEL	ØD	T (Thread)	E	L MAX	A	H (Hex)	Q'ty per bag	Q'ty per box
SC 04M3	4	M3xP0.5	24.5	38.5	3.5	8	10	100
SC 04M5	4	M5xP0.8	24.5	37	3.5	8	10	100
SC 04M6	4	M6xP 1.0	24.5	39.8	4.8	8	10	100
SC 0401	4	PT 1/8	29.5	41	7.5	12	10	50
SC 0402	4	PT 1/4	33	48.5	11.4	14	10	50
SC 06M5	6	M5xP0.8	26.5	38.5	3.5	8	10	100
SC 06M6	6	M6xP 1.0	26.5	39.8	4.8	8	10	100
SC 0601	6	PT 1/8	30	41	7.5	12	10	50
SC 0602	6	PT 1/4	34	48.5	11.4	14	10	50
SC 0603	6	PT 3/8	37.5	54	12.8	19	5	25
SC 0604	6	PT 1/2	45.5	60	15.5	24	5	20
SC 0801	8	PT 1/8	31.5	41	7.5	12	10	50
SC 0802	8	PT 1/4	37.5	48.5	11.4	14	10	50
SC 0803	8	PT 3/8	40	54	12.8	19	5	25
SC 0804	8	PT 1/2	46	60.5	15.5	24	5	20
SC 1001	10	PT 1/8	37	41	7.5	12	10	50
SC 1002	10	PT 1/4	41	48.5	11.4	14	5	25
SC 1003	10	PT 3/8	44	54	12.8	19	5	25
SC 1004	10	PT 1/2	49.5	61.5	15.5	24	5	20
SC 1202	12	PT 1/4	42.5	48.5	11.4	14	5	25
SC 1203	12	PT 3/8	46	54	12.8	19	5	25
SC 1204	12	PT 1/2	50	60	15.5	24	5	20

SCF

union straight



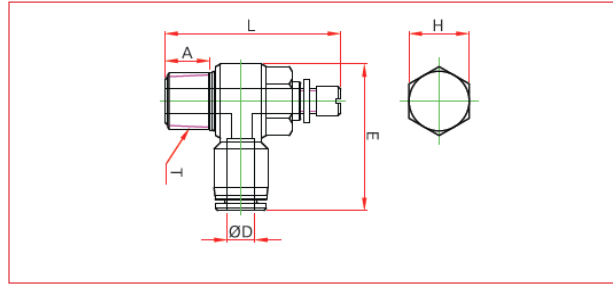
MODEL	ØD	L MAX	E	M1	M2	C	Q'ty per bag	Q'ty per box
SCF 04	4	31.5	40	6.5	14	3.2	10	50
SCF 06	6	43	47	8.5	20	4.2	10	50
SCF 08	8	44	52	9.5	22	4.2	5	25
SCF 10	10	52.5	63.5	11	26	4.2	5	20
SCF 12	12	57	73	14	32	4.2	3	12

SPEED CONTROLLERS / G TYPE

>METRIC SYSTEM, BSPP, WITH INTEGRAL O-RING SEAL

SC

elbow
swivel rotating type



MODEL	ØD	T (Thread)	E	L MAX	A	H (Hex)	Q'ty per bag	Q'ty per box
SC 04G01	4	G 1/8	29.5	41	6.5	12	10	50
SC 04G02	4	G 1/4	33	48	8.5	14	10	50
SC 06G01	6	G 1/8	30	41	6.5	12	10	50
SC 06G02	6	G 1/4	34	49	8.5	14	10	50
SC 06G03	6	G 3/8	37.5	55	10	19	5	25
SC 06G04	6	G 1/2	46	61	11.5	24	5	20
so 08G01	8	G 1/8	32.5	41	6.5	12	10	50
SC 08G02	8	G 1/4	37.5	48	8.5	14	10	50
SC 08G03	8	G 3/8	40	54	10	19	5	25
SC 08G04	8	G 1/2	46	60	11.5	24	5	20
SC 10G01	10	G 1/8	37	41	6.5	12	10	50
SC 10G02	10	G 1/4	41	50	8.5	14	5	25
so 10G03	10	G 3/8	44	54	10	19	5	25
SC 10G04	10	G 1/2	49.5	61	11.5	24	5	20
SC 12G02	12	G 1/4	42.5	50	8.5	14	5	25
SC 12G03	12	G 3/8	46	55	10	19	5	25
SC 12G04	12	G 1/2	50	62.5	11.5	24	5	20

PRODUCT DESCRIPTION

FEATURES/BENEFITS

- When off, the three-way direction control valve discharges the residual pressure and blocks air flow
- This product switches air pressure devices air on/off by simply turning the handle
- Maintenance or inspection is possible when the remaining pressure in the device is removed
- A three-way valve discharges the remaining pressure out and blocks the incoming air in the off state
- There are 4 types available depending on the way it is applied to the air pressure flow

APPLICATION

- Used for turning air pressure on and off for pneumatic devices

SPECIFICATION

- Fluid type : Air (no other gases or liquids)
- Working pressure : 0~150PSI / 0~9.9kgf /cm'(0~990kpa)
- Negative pressure : 29.5in Hg / 750mmHg (750Torr)
- Working temperature : 32~140F / 0~60C
- Applicable tube : Polyurethane and Nylon

ORDER

PLACING AN ORDER OR REQUEST

Specifying Standard Items:

Please specify the following:

1. Series(Item)Number
2. Tube Outside Dia.
3. Thread Size

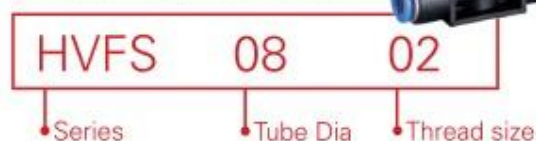
THREAD SIZE

- 01:1/8"BSPT
- 02:1/4"BSPT
- 03:3/8"BSPT
- 04:1/2"BSPT

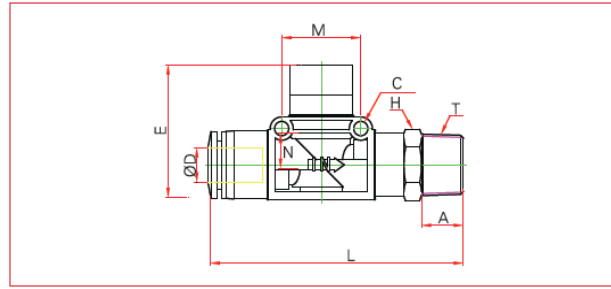
Example of a request

HVFS series

8mm tube with 1/4"BSPT thread

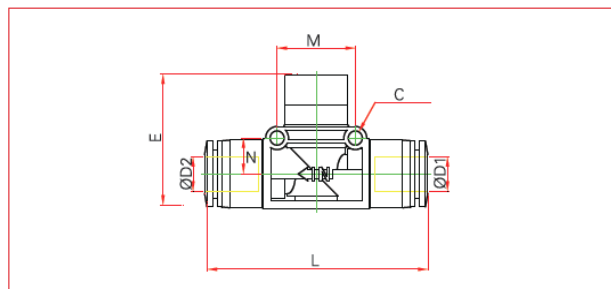


HVFS straight Fitting Thread



MODEL	ØD	L	E	M	N	C	T	A	H (Hex)	Q'ty per bag	Q'ty per box
HVFS 06-1/4"	6	59.8	37.5	19	8	3.5	PT 1/8	8	12	5	25
HVFS 06-1/2"	6	62	37.5	19	8	3.5	PT 1/4	10	14	5	25
HVFS 06-3/4"	6	62.5	37.5	19	8	3.5	PT 3/8	11	17	5	25
HVFS 08-1/4"	8	60	37.5	19	8	3.5	PT 1/8	8	12	5	25
HVFS 08-1/2"	8	62.5	37.5	19	8	3.5	PT 1/4	10	14	5	25
HVFS 08-3/4"	8	64	37.5	19	8	3.5	PT 3/8	11	17	5	25
HVFS 10-1/4"	10	78	40.5	24	11	3.5	PT 1/4	10	17	5	20
HVFS 10-3/4"	10	79	40.5	24	11	3.5	PT 3/8	11	17	5	20
HVFS 10-1/2"	10	83.5	40.5	24	11	3.5	PT 1/2	14	21	3	15
HVFS 12-1/4"	12	78.3	40.5	24	11	3.5	PT 1/4	10	17	3	15
HVFS 12-3/4"	12	79.3	40.5	24	11	3.5	PT 3/8	11	17	5	15
HVFS 12-1/2"	12	82.8	40.5	24	11	3.5	PT 1/2	14	21	3	15

HVFF union straight



MODEL	ØD1	ØD2	L	E	M	N	C	Q'ty per bag	Q'ty per box
HVFF0606	6	6	52.5	37.5	19	8	3.5	5	25
HVFF0806	8	6	52.5	37.5	19	8	3.5	5	25
HVFF0808	8	8	53	37.5	19	8	3.5	5	25
HVFF1008	10	8	68	40.5	24	11	3.5	5	20
HVFF1010	10	10	68.5	40.5	24	11	3.5	5	20
HVFF1210	12	10	68.5	40.5	24	11	3.5	5	20
HVFF1212	12	12	69	40.5	24	11	3.5	5	20

PRODUCT DESCRIPTION

FEATURES/BENEFITS

- Porous metal parts have their high strength, uniform pore distribution, high temperature resistant, antithermalshock, easy fabricating, easy regeneration and longer service life advantages
- Typical regeneration methods being used include high pressure cleaning, ultrasonic cleaning, chemical cleaning and high temperature cleaning
- Adequate regeneration can prolong the service life of parts more effectively

APPLICATION

Sintered metal porous metals are usually provided for the following application:

1. Gas, liquid and gas/liquid separation
2. Gas dispersion
3. Vibration and sound dampening
4. Anti-combustion

ORDER

PLACING AN ORDER OR REQUEST

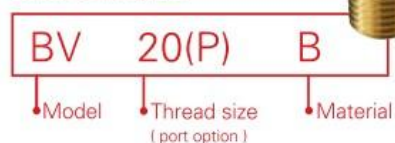
Specifying Standard Items:

Please specify the following:

1. Model
2. Thread size
3. Material

Example of an request

BV series silencer:
Brass ,1/4"PT thread



BM series silencer:
Steel ,1/4"NPT thread



BV series silencer:
Stainless Steel ,1/4"NPT thread



CONNECTION

BSPT

- 08=M5
- 18=1/8"
- 28=1/4"
- 38=3/8"
- 48=1/2"
- 68=3/4"
- 88=1 "
- 128=1-1/4"
- 148=1-1/2"
- 200=2"

NPT

- 08=10-32UNF
- 18=1/8"
- 28=1/4"
- 38=3/8"
- 48=1/2"
- 68=3/4"
- 88=1 "
- 128=1-1/4"
- 148=1-1/2"
- 200=2"

PORT OPTION

- (P)=BSPT
- (N)=NPT

MATERIAL

- B=Brass
- S=Steel
- SS=Stainless Steel
- AL=Aluminium
- P=Plastic

BRASS SILENCERS

BM

FILTERING GRADE 40 MICRON
MAX PRESSURE 300psi (20kg/cm²)
OPERATING TEMPERATURE -30°C~150°C



MODEL	BM-08	BM-18	BM-28	BM-38	BM-48	BM-68	BM-88	BM-128	BM-148	BM-200
CONNECTION	M5	1/8"	1/4"	3/8"	1/2"	3/4"	1"	1-1/4"	1-1/2"	2"

BV

FILTERING GRADE 40 MICRON
MAX PRESSURE 300psi (20kg/cm²)
OPERATING TEMPERATURE -30°C~150°C



MODEL	BV-08	BV-18	BV-28	BV-38	BV-48	BV-68	BV-88	BV-128	BV-148	BV-200
CONNECTION	M5	1/8"	1/4"	3/8"	1/2"	3/4"	1"	1-1/4"	1-1/2"	2"

SCM

FILTERING GRADE 40 MICRON
MAX PRESSURE 300psi (20kg/cm²)
OPERATING TEMPERATURE -30°C~150°C



MODEL	BM-08	SCM-18	SCM-28	SCM-38	SCM-48	SCM-68	SCM-88
CONNECTION	M5	1/8"	1/4"	3/8"	1/2"	3/4"	1"

SBR

FILTERING GRADE 70 MICRON
 MAX PRESSURE 300psi (20kg/cm²)
 OPERATING TEMPERATURE -30°C~150°C



MODEL	SBR-18	SBR-28	SBR-38	SBR-48
CONNECTION	1/8"	1/4"	3/8"	1/2"

SPBM

FILTERING GRADE 40 MICRON
 MAX PRESSURE 300psi (20kg/cm²)
 OPERATING TEMPERATURE -30°C~150°C



MODEL	SPBM-18	SPBM-28	SPBM-38	SPBM-48
CONNECTION	1/8"	1/4"	3/8"	1/2"

SBC

FILTERING GRADE 40 MICRON
 MAX PRESSURE 300psi (20kg/cm²)
 OPERATING TEMPERATURE -30°C~150°C



MODEL	SBC-18	SBC-28	SBC-28
CONNECTION	1/8"	1/4"	3/8"

STEEL SILENCERS

Steel With Nickel Plated Body With Bronze Sintered Filtering

BM

FILTERING GRADE 40 MICRON

MAX PRESSURE 300psi (20kg/cm²)

OPERATING TEMPERATURE -30°C~150°C



MODEL	BM-08	BM-18	BM-28	BM-38	BM-48	BM-68	BM-88	BM-128	BM-148	BM-200
CONNECTION	M5	1/8"	1/4"	3/8"	1/2"	3/4"	1"	1-1/4"	1-1/2"	2"

BV

FILTERING GRADE 40 MICRON

MAX PRESSURE 300psi (20kg/cm²)

OPERATING TEMPERATURE -30°C~150°C



MODEL	BV-08	BV-18	BV-28	BV-38	BV-48	BV-68	BV-88	BV-128	BV-148	BV-200
CONNECTION	M5	1/8"	1/4"	3/8"	1/2"	3/4"	1"	1-1/4"	1-1/2"	2"

STAINLESS STEEL SILENCERS

Stainless Steel Sus303 Body And Sus316 Filter

BM

FILTERING GRADE 70 MICRON

MAX PRESSURE 250psi (16.5kg/cm²)

OPERATING TEMPERATURE 1.6°C~-200°C



MODEL	BM-05	BM-18	BM-28	BM-38	BM-48	BM-68	BM-88
CONNECTION	M5	1/8"	1/4"	3/8"	1/2"	3/4"	1"

STAINLESS STEEL SILENCERS

Stainless Steel Sus303 Body And Sus316 Filter

BV

FILTERING GRADE 70 MICRON
MAX PRESSURE 250psi (16.5kg/cm²)
OPERATING TEMPERATURE 1.6°c~-200°c



MODEL	BV-08	BV-18	BV-28	BV-38	BV-48	BV-68	BV-88
CONNECTION	M5	1/8"	1/4"	3/8"	1/2"	3/4"	1"

Stainless Steel Sus303 Body And Sus316 Filter

SCM

FILTERING GRADE 70 MICRON
MAX PRESSURE 250psi (16.5kg/cm²)
OPERATING TEMPERATURE 1.6°c~-200°c



MODEL	SCM-08	SCM-18	SCM-28	SCM-38	SCM-48	SCM-68	SCM-88
CONNECTION	M5	1/8"	1/4"	3/8"	1/2"	3/4"	1"

Steel Plated Body And Su\$304 Filter

SBN

FILTERING GRADE 70 MICRON
MAX PRESSURE 250psi (16.5kg/cm²)
OPERATING TEMPERATURE 1.6°c~-200°c



MODEL	SBN-18	SBN-28	SBN-38	SBN-48	SBN-68	SBN-88
CONNECTION	1/8"	1/4"	3/8"	1/2"	3/4"	1"

PLASTIC SILENCERS

PM

MAX PRESSURE 150psi (10kg/cm²)

OPERATING TEMPERATURE 0°c~-80°c



MODEL	PM-18	PM-28	PM-38	PM-48
CONNECTION	1/8"	1/4"	3/8"	1/2"

PS

ITEM	MODEL	PS-18	PS-28	PS-38	PS-48
FLUID		AIR	AIR	AIR	AIR
CONNECTION		1/8"PT	1/4"PT	3/8"PT	1/2"PT
OVERALL LENGTH		33.5mm	61.2mm	80.5mm	86mm
DIAMETER		10.6mm	21.6mm	24.5mm	30mm
HEX		X	18.5mm	19.5mm	24.5mm
MATERIAL	BODY	POM	POM	POM	POM
	ELEMENT	RESIN	RESIN	RESIN	RESIN
MAXOPERATION PRESSURE		10KG	10KG	10KG	10KG
AIR FLOW(0.6bo1I		80L/MIN.	90L/MIN.	93L/MIN.	95L/MIN.
WEIGHT(APPROXI		2g	13g	20g	29g
unrr PACK(PE BAG)		10FCS	10PCS	10PCS	5PCS
INNER BOX PACK		200PCS	200PCS	100PCS	25PCS
CARTON PACK		1600PCS	1600PCS	800PCS	200PCS



TC-I

AVAILABLETUBING -----POLYURETHANE AND NYLON
 CUTTINGOUTER DIA ----- 3MM ~15MM
 BODY MATERIAL ----- POLYACETAL
 BLADE MATERIAL----- STAINLESS STEEL
 STANDARD COLOR----- BLACK
 WEIGHT ----- 33g/PC
 PACKAGE ----- 20PC, /SHPI COLOR BOX.
 -----160PC, /MASTER CARTON



TC-II

AVAILABLETUBING -----POLYURETHANE AND NYLON
 CUTTINGOUTER DIA ----- 3MM ~16MM
 BODY MATERIAL----- POLYACETAL
 BLADE MATERIAL-----STAINLESS STEEL
 STANDARD COLOR----- BLACK
 EQUIPPEDWITH 1MMEASURING TAPEWITH LOCK&OPEN MECHANISM
 WEIGHT ----- 55g/PC
 PACKAGE -----6PC, /SHPI COLOR BOX.
 -----48 PC, /MASTER CARTON

