

CITY OF COVINGTON CODE OF ORDINANCES SECT. 4.208
STREET PLANTING AREA REQ'S:
1 CLASS 'A' TREE / 20 LINEAL FEET.
300 L.F. 15 CLASS 'A' TREES REQUIRED.
0 TREES PRESERVED. 0 TREE CREDITS.
15 CLASS 'A' TREES PROPOSED.

PROTECT AND RESTORE EXISTING BEDS AND PLANTINGS

— EXISTING DRAIN
INLET TO REMAIN
— NEW SIDEWALK

—EXISTING SIGN
TO REMAIN

15'X15' SIGHT
TRIANGLE —

ELEVATED
CROSSWALK
OVER 14TH AVE

ADD SOD AS REQ'D.
TO FORM STRAIGHT
EDGE AT ROAD
FROM TYLER STREET
TO EMERGENCY ROO
DRIVE

15'X15' SIGHT
TRIANGLE —

11TH AVENUE

15'X15' SIGH
TRIANGLE—

NEW TURNING
LANE; RE: CIVIL

15'X15' SIGN
TRIANGLE F -

ACTUAL
NORTH

PROJECT
NORTH

SITE PLAN
1" = 20'-0"

S. TYLER STREET

12TH AVENUE

— MONUMENT
SIGN, N.I.C.

PROPERTY LINE

TOWER 2
6 LEVELS

CITY OF COVINGTON CODE OF ORDINANCES

STREET PLANTING AREA REQ'S: 1 CLASS 'A' TREE/ 20 LINEAL FEET. 286.4 LF. 15 CLASS 'A' TREES REQUIRED. 0 TREES PRESERVED. 0 TREE CREDITS. 15 CLASS 'A' TREES PROPOSED.	SECT. 4.208.
--	--------------

**LEVEL 1.0
(GROUND)**
EXISTING 12" LIVE OAK
TO BE REMOVED

LEVEL 1.5LEVEL 1.5

HARRISON AVENUE

CITY OF COVINGTON CODE OF ORDINANCES SECT. 4.208.
STREET PLANTING AREA REQ'S:
1 CLASS 'A' TREE/10 LINEAL FEET. VEGETATIVE SCREEN AT PARKING
106365 L.F. 6 CLASS 'A' TREES REQUIRED.
0 TREES PRESERVED. 0 TREE CREDITS.
6 CLASS 'A' TREES PROPOSED.
CONT. VEGETATIVE SCREEN PROPOSED.

CITY OF COVINGTON CODE OF ORDINANCES §
TABLE 42.3
PROPERTY ZONED IJ ADJUTING PROPERTY Z
NO BUFFER REQUIRED. _____

CITY OF COVINGTON CODE OF ORDINANCES SECT. 4.208
STREET PLANTING AREA REQ'S.
1 CLASS 'A' TREE/ 20 LINEAL FEET.
300 LF. 5 CLASS 'A' TREES REQUIRED.
0 TREES PRESERVED. 0 TREE CREDITS
5 CLASS 'A' TREES PROPOSED

CITY OF COVINGTON CODE OF ORDINANCES SECT. 4.208
STREET PLANTING AREA REQ'S:
1 CLASS 'A' TREE/ 20 LINEAL FEET.
300 LF. 15 CLASS 'A' TREES REQUIRED.
0 TREES PRESERVED. 0 TREE CREDITS
15 CLASS 'A' TREES PROPOSED.

SOD ALL AREAS
DISTURBED BY CONCRETE
WORK. PROVIDE SEAMLESS
TRANSITION TO EXIST. SOD

SOD ALL AREAS
DISTURBED BY CONCRETE
WORK. PROVIDE SEAMLESS
TRANSITION TO EXIST. SOD

EMERGENCY DEPARTMENT
PARKING LOT

COVINGTON CARDIOVASCULAR
PARKING LOT

1. PREPARE ALL BEDS AND TREE PLANTING PITS AS PER SPECIFICATIONS OF THE AMERICAN SOCIETY OF NURSERYMEN.
2. LANDSCAPE CONTRACTOR AND ALL RELATED SUBCONTRACTORS SHALL FAMILIARIZE THEMSELVES WITH THE SITE AND DETERMINE LOCATIONS OF ALL UTILITIES AND BOUNDARIES PRIOR TO ANY EXCAVATION OR OTHER WORK.
3. PROVIDE POSITIVE DRAINAGE AWAY FROM BUILDING AND SIDEWALKS.
4. AFTER INSTALLATION, ALL PLANTS SHALL BE HEALTHY, PERPENDICULAR TO THE GROUND PLANE AND AT LEAST TO THE SIZE SPECIFIED.
5. EXCAVATED SOIL SHALL BE DISPOSED OF LEGALLY. COMPACT PLANTING SOIL AS IT IS BACKFILLED.
6. INSTALL GRADE 'A' LOUISIANA-GROWN CENTIPEDE SOD AT ALL PARKING ISLANDS.
7. INSTALL 4" ORGANIC MULCH AT ALL PLANTING BEDS AND PITS.
8. LEAVE SITE CLEAN.
9. ALL WORK SHALL BE DONE IN ACCORDANCE WITH CITY OF COVINGTON CODE OF ORDINANCES, SECTION 42.

PLANTING LEGEND					
MARK	NAME	QTY.	SIZE	CALIPER INCH	CLASS
AJ	ANDORRA JUNIFER	92	3 GAL.		
	JUNIFERUS HORIZONTALIS 'YOUNGSTOWN'		1 GAL.		
AZ	AZALEA	86	2 GAL.		
BM	RHOODENDRON MRS. GG GERBING	6	8-10"	2" MIN.	A
	BAY MAGNOLIA				
	M. VIRGINIANA				
CI	CAST IRON PLANT	125	1 GAL.		
	ASPIDISTRA ELATICA				
CM	OSPRE MYRTLE	8	8-10"	2" MIN.	B
	LAGERSTROMIA INDICA 'RED NATCHEZ'				
DR	DRIFT ROSE	16	3 GAL.		
	'BUTTERCREAM DRIFT'				
	ENCORE AZALEA	169	3 GAL.		
EG	AUTUMN CORAL	3	1 GAL.		
FA	FOUNTAIN GRASS	50	3 GAL.		
	PENNISETUM SETACEUM 'RUBRUM'				
IC	ITALIAN CYRESS	2	15 GAL.		
	COMPRESSUS SEMPERVIRENS				
JY	JAPANESE TEJU	7	15 GAL.		
	PODOCARPUS MACROPHYLLUS				
LI	LIRIOPE	83	1 GAL.		
LO	'L. MUSCARI' GIANT BLUE'				
	LIVE OAK	4	8-10"	3" MIN.	A
	QUEROUS VIRGINIANA				
LP	LOROPETALUM	40	3 GAL.		
	L. PURPLE PIXIE'				
MD	MAIDEN GRASS	12	3 GAL.		
	'MISCANTHUS SINENSIS GRACILIS'				
MG	MAGNOLIA	10	8-10"	2" MIN.	A
	M. GRANDIFLORA 'DD BLANCHARD'				
SC	SASANQUA CAPELLIA	6	15 GAL.		
	C. SASANQUA 'SHI SHI GASHIRA'				
SP	SHUMARD OAK	26	8-10"	2" MIN.	A
	Q. SHUMARDII				
80	SKY PENCIL	16	3 GAL.		
	'ILEX CRENATA 'SKY PENCIL'				
TP	TULIP POPULAR	10	8-10"	2" MIN.	A
	LIRIODENDRON SYLFFIFERA				
ZG	ZEBRA GRASS	38	3 GAL.		
	'MISCANTHUS SINENSIS 'LITTLE ZEBRA'				

***fl*+**
WB
architects

a professional corporation / continuous practice since 1981
CHITECTS, APC.

architecture
planning
interiors
sustainable design
consulting

1404 GREENGATE DRIVE, SUITE 101
COVINGTON, LA 70433
985-863-4100

NO. ISSUE	DATE
-----------	------

11th AVENUE PARKING GARAGE

CONSTRUCTION
DOCUMENTS

Date
05.NOV.2025

CONSTRUCTION DOCUMENTS

PLANTING PLAN

Job No. 220058.01

Drawn by	Checked by
JRA	JRA

L1.1

Sheet No. _____

1212 SOUTH YLER STREET, COWING ON, CA 94533

THESE DRAWINGS ARE THE SOLE PROPERTY OF FLWIB ARCHITECTS, APC AND ARE ISSUED AS INSTRUMENTS OF SERVICE. THESE DRAWINGS SHALL NOT BE COPIED, REPRODUCED OR USED IN ANY MANNER WITHOUT WRITTEN CONSENT OF FLWIB ARCHITECTS, APC.

a professional corporation in continuous practice since 1961

SECTION 32 90 10– LANDSCAPE WORK

PART 1 - GENERAL

SUMMARY

- A. Section includes:
1. Complete landscaping shown on drawings and described herein.
- B. Related Sections:

Drawings and general provisions of Contract, including General and Supplementary Conditions and Division 1 Specification Sections, apply to this Section.

DESCRIPTION OF WORK

Landscape development work to include the installation sod at all disturbed areas of earth on the site not planted as beds or pits.

QUALITY ASSURANCE:

Source Quality:

General: Ship landscape materials with certificates of inspection required by governing authorities. Comply with applicable federal, state and Parish regulations governing landscape materials and work.

Do not make substitutions. If specified material is not obtainable, submit proof of non-availability to Landscape Architect, together with proposal for use of equivalent material.

Analysis and Standards: Package standard products with manufacturer's certified analysis. For other materials, provide analysis by recognized laboratory made in accordance with methods established by the Association of Official Agriculture Chemists, wherever applicable.

Topsoil: Before delivery of topsoil, furnish Architect with written statement giving location of properties from which topsoil is to be obtained, names and addresses of owners, depth to be stripped, and crops grown during past two years.

1.3.1.5 Architect reserves the right to review materials at growing site.

1.3.1.6 Observation at growing site does not preclude right of rejection at job site. Plants damaged in transit or at job site shall be rejected.

LANDSCAPE WORK

32 90 10 - 1

SECTION 32 90 10– LANDSCAPE WORK

site. Obtain topsoil only from naturally, well-drained sites where topsoil occurs in a depth of not less than 4". Do not obtain from bogs or marshes.

SOIL AMENDMENTS:

Lime: Natural dolomitic limestone containing not less than 85% of total carbonates with a minimum of 30% magnesium carbonates, ground so that not less than 90% passes a 10-mesh sieve and not less than 50% passes a 100-mesh sieve.

Aluminum Sulfate: Commercial grade.

Sand: Clean, washed sand, free of toxic materials.

Commercial Fertilizer: Complete fertilizer of neutral character, with some elements derived from organic sources and containing following percentages of available plant nutrients:

For lawns, provide fertilizer with percentage of nitrogen required to provide not less than 1 lb. of actual nitrogen per 100 sq. ft. of lawn area and not less than 4% phosphoric acid and 2% potassium. Provide nitrogen in a form that will be available to lawn during initial period of growth; at least 50% of nitrogen to be organic form.

GRASS MATERIALS:

Sod: Provide strongly rooted sod, not less than 1 to 2 years old, free of weeds and undesirable native grasses, and machine cut to pad thickness of 3/4 inch (plus or minus 1/4 inch), excluding top growth and thatch. Provide only sod capable of vigorous growth and development when planted (viable, not dormant). Provide Louisiana-grown Class 'A' sod.

Provide sod of uniform pad sizes with maximum 5 percent deviation in either length or width. Broken pads or pads with uneven ends will not be acceptable. Sod pads incapable of supporting their own weight when suspended vertically with a firm grasp on upper 10 percent of pad will be rejected.

Provide sod composed principally of following:

Centipede grass (Eremochola Ophiuroidea).

2.8 PLANT MATERIALS

2.8.1 General: Well-formed No. 1 grade or better nursery grown stock. Listed plant heights are from tops of root balls to nominal tops of plants. Container grown plants shall be well rooted and established in their container but not root bound. Plants will be individually approved by the Architect and his decision as to their acceptability shall be final.

LANDSCAPE WORK

32 90 10 - 4

SECTION 32 90 10– LANDSCAPE WORK

1.3.1.7 Personnel: Employ only qualified personnel familiar with required work.

1.4 REFERENCED STANDARDS

- A. American Standard for Nursery Stock, Edition approved October 27, 1980, by American National Standards Institute, Inc. – Plant Materials
- B. Hortus Third, 1975 – Cornell University – Plant Nomenclature

PART 2 - PRODUCTS

SUBMITTALS:

Certification: Submit certificates of inspection as required by governmental authorities. Submit manufacturer's or vendor's certified analysis for soil amendments and fertilizer materials. Submit other data substantiating that materials comply with specified requirement.

DELIVERY, STORAGE AND HANDLING

Packaged Materials: Deliver packaged materials in sealed containers showing weight, analysis and name of manufacturer. Protect materials from deterioration during delivery, and while stored at site.

Sod: Time delivery so that sod will be placed within 24 hours after cutting. Protect sod against drying and breaking of rolled strips or squares.

2.2.3 Deliver plants in container sufficiently rigid to hold ball shape and protect root mass.

2.2.4 Deliver only plant materials that can be planted in one day unless adequate storage and watering facilities are available on job site.

2.2.5 Protect root balls by heeling in with pine bark mulch or other approved moisture retaining material if not planted within 24 hours of delivery.

2.2.6 Protect plants during delivery and storage to prevent damage to root balls or desiccation of leaves. Keep plants moist at all times. Cover all materials during transport.

2.2.7 Notify Architect of delivery schedule 48 hours in advance so plant material may be observed upon arrival at job site.

2.2.8 Remove rejected plant material immediately from site.

LANDSCAPE WORK

32 90 10 - 2

SECTION 32 90 10– LANDSCAPE WORK

2.8.2 Shrubs and Groundcovers: Nursery-grown, healthy, vigorous of normal habit of growth for species, free from disease, insect eggs and larvae. Specified sizes are before pruning and are measured with branches in normal position.

2.8.3 Trees: Nursery-grown healthy, vigorous, full-branched, well-shaped, symmetrical, trunk diameter and height requirements as specified. Trees with loose or broken balls will be rejected. Trees shall be free of physical damage such as scrapes, bark abrasions, split branches, mistletoe or other parasitic growth.

2.9 MULCH

2.9.1 Install finely shredded pine bark mulch to a minimum depth of 3" (three inches) at all beds and tree pits. Submit sample of mulch to architect for approval prior to installation. Substitutions without prior approval by architect are not allowed.

3 PART 3 – EXECUTION

3.1 INSPECTION

- A. Examine subgrade upon which work is to be performed and verify detrimental conditions affecting the work. Notify General Contractor or Architect of unsatisfactory conditions. Do not proceed with work until unsatisfactory conditions have been corrected.

3.2 TREE PLANTING

3.2.1 Stake trees for location for approval by Architect.

3.2.2 Excavated soil from pits may be used for tree backfill if approved by Architect. Backfill must be free of subsoils, rock, caliche, concrete and other extraneous material. If backfill is not acceptable, use sandy loam.

3.2.3 After tree pits are excavated, fill pits with water to determine if pits will adequately drain. If pits do not drain within 24 hours, provide sump pits.

3.2.4 Plant trees in pits as shown on drawings. Backfill with 5 parts excavated soil (or sandy loam) and one part peat. Remove excess excavated soil from site. Carefully settle backfill by hand watering to prevent air pockets and to thoroughly settle soil around tree ball.

3.3 TREE STAKING

3.3.1 Stake trees as detailed on drawings immediately following planting operation. Take precautions during staking to prevent damage or injury to branches. Orient stakes within each cluster or row of trees in same direction.

LANDSCAPE WORK

32 90 10 - 5

SECTION 32 90 10– LANDSCAPE WORK

2.2.9 To avoid damage, do not lift, move, adjust plant to plumb or otherwise manipulate plants by trunks or stems.

JOB CONDITIONS

Proceed with and complete landscape work as rapidly as portions of site become available, working within seasonal limitations for each kind of landscape work required.

Utilities: Determine location of underground utilities and perform work in a manner which will avoid possible damage. Hand excavate, as required to minimize possibility of damage to underground utilities. Maintain grade stakes set by others until removal is mutually agreed upon by parties concerned.

Excavation: When conditions detrimental to plant growth are encountered, such as rubble fill, adverse drainage conditions, or obstructions, notify Architect before planting.

Perform actual planting only when weather and soil conditions are suitable in accordance with locally acceptable practices.

Do not move equipment over existing or newly placed structures without approval of Architect or General Contractor.

Protect other improvements from damage with protection boards, ramps and protective sheeting.

SPECIAL PROJECT WARRANTY

Warranty plants for one year after final acceptance. Replace dead materials and material not in vigorous, thriving conditions as soon as weather permits and on notification by Owner. Replace plants, including trees, which in opinion of the Architect have partially died thereby damaging size, shape or symmetry.

Replace plants with same kind and size as originally planted, at no cost to Owner. Provide one year warranty on replacement plants. Trees must be replaced at start of next planting season. Remove dead trees immediately. Protect irrigation system and other piping, conduit and/or other work during replacement. Repair any damage immediately to the Owner's satisfaction.

TOPSOIL

Topsoil for landscape work is not available at site and must be furnished as specified.

Provide new topsoil that is fertile, friable, natural loam, surface soil, reasonably free of subsoil, clay lumps, brush, weeds and other litter, and free of roots, stumps, stones larger than 1" in any dimension, and other extraneous or toxic matter harmful to plant growth.

Obtain topsoil from local sources or from areas having similar soil characteristics to that found at project

LANDSCAPE WORK

32 90 10 - 3

SECTION 32 90 10– LANDSCAPE WORK

3.4 TREE PRUNING

3.4.1 Prune newly planted and transplanted trees as directed by Architect following Fine Pruning, Class I pruning standards provided by National Arborist Association. In general, remove one-third of wood by thinning. Do not cut back terminal branches. Remove sucker growth and broken or badly bruised branches.

3.5 TREE WRAPPING

3.5.1 Wrap nursery-grown trees. Extend wrapping from ground to a point immediately below lowest branch of each tree or as directed. Securely fasten.

3.6 PLANT BED PREPARATION

3.6.1 Place shrubs and groundcovers in position on bed areas before cans have been removed. Obtain approval from Architect. Architect reserves the right to interchange or shift locations of plants prior to planting. Plant where located, setting plants with tops of balls even with top of bed and compact soil carefully around each plant. Water each plant thoroughly to eliminate air pockets. Carefully prune plants to remove dead or broken branches and hand-rake bed areas to smooth even surfaces.

3.6.2 Excavate or fill to provide 6 inches of Bed Mix for shrubs, groundcover and seasonal color. Haul off excavated soil. Place Bed Mix 3inches deep into bed area and thoroughly rototill to 2-3 inches deep into the subgrade. Rake out any clods, rocks or debris and complete backfill of Bed Mix to grade shown on drawings.

3.6.3 Add 4 pounds commercial fertilizer per 100 s.f. of bed area and mix thoroughly.

3.6.4 After planting has been completed and approved by Architect, top dress bed areas with approved mulch, at least 3" deep.

3.6.5 Keep premises neat and orderly including organization of storage areas. Remove trash and debris from planting areas daily. Keep paved areas clean by sweeping or hosing.

END OF SECTION 32 90 10

LANDSCAPE WORK

32 90 10 - 6

architecture
planning
interiors
landscape
sustainable design
consulting

fl+

WB

architects

a professional corporation

1404 GREENGATE DRIVE, SUITE 100
CRAWFORD, MISSISSAUGA, ONTARIO
L4W 3G3
905-883-4100

incorporated in the province of ontario
since 1981

11th AVENUE PARKING GARAGE

AT

ST. TAMMANY PARISH HOSPITAL

FOR

ST. TAMMANY HEALTH SERVICES

1202 SOUTH TYLER STREET - COWINGTON, LA 70433

CONSTRUCTION DOCUMENTS

Date

04.NOV.2025

LANDSCAPE SPECIFICATIONS

PLANTING PLAN

Job No.

220058.01

Drawn by

JRA

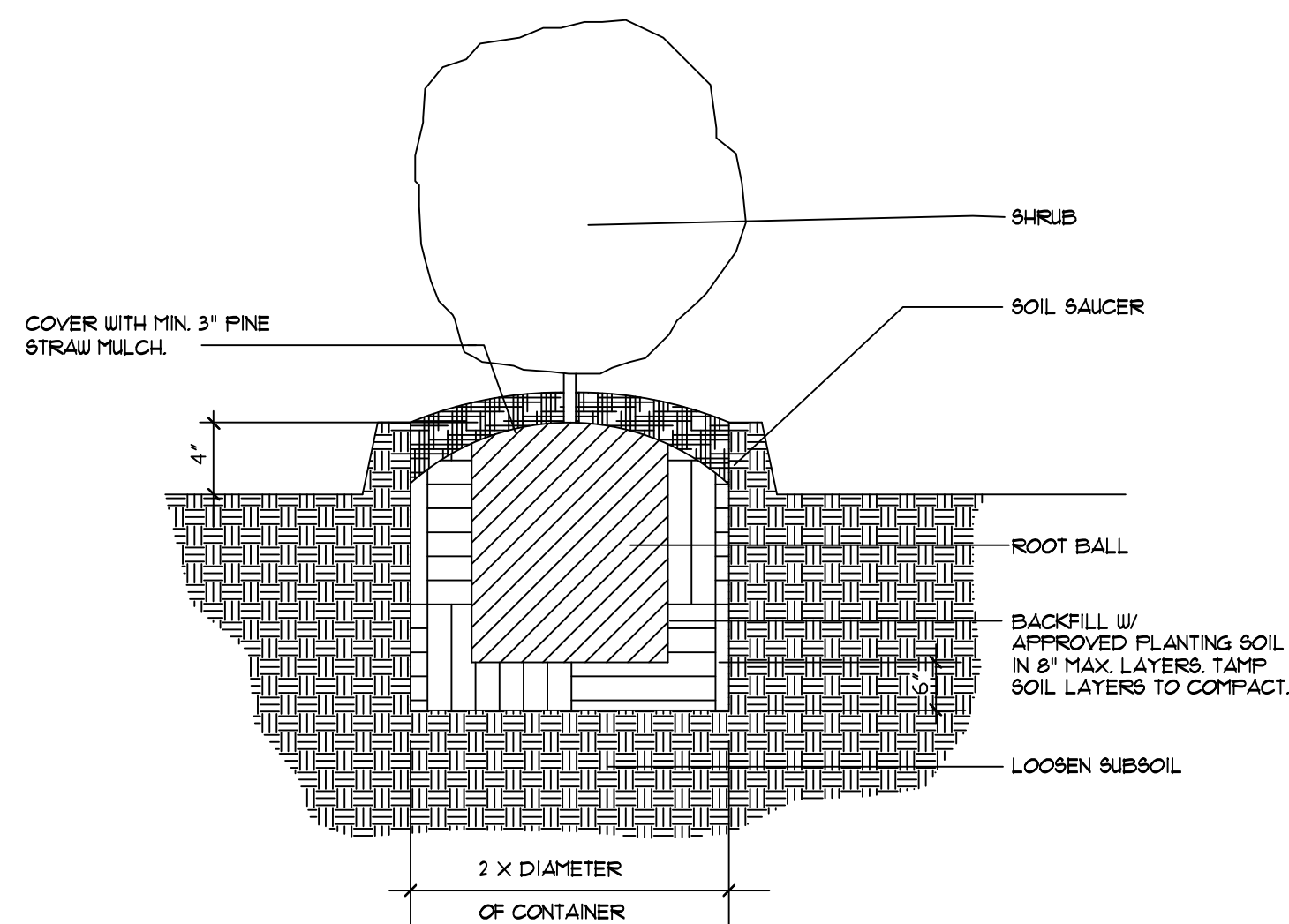
Checked by

JRA

L1.2

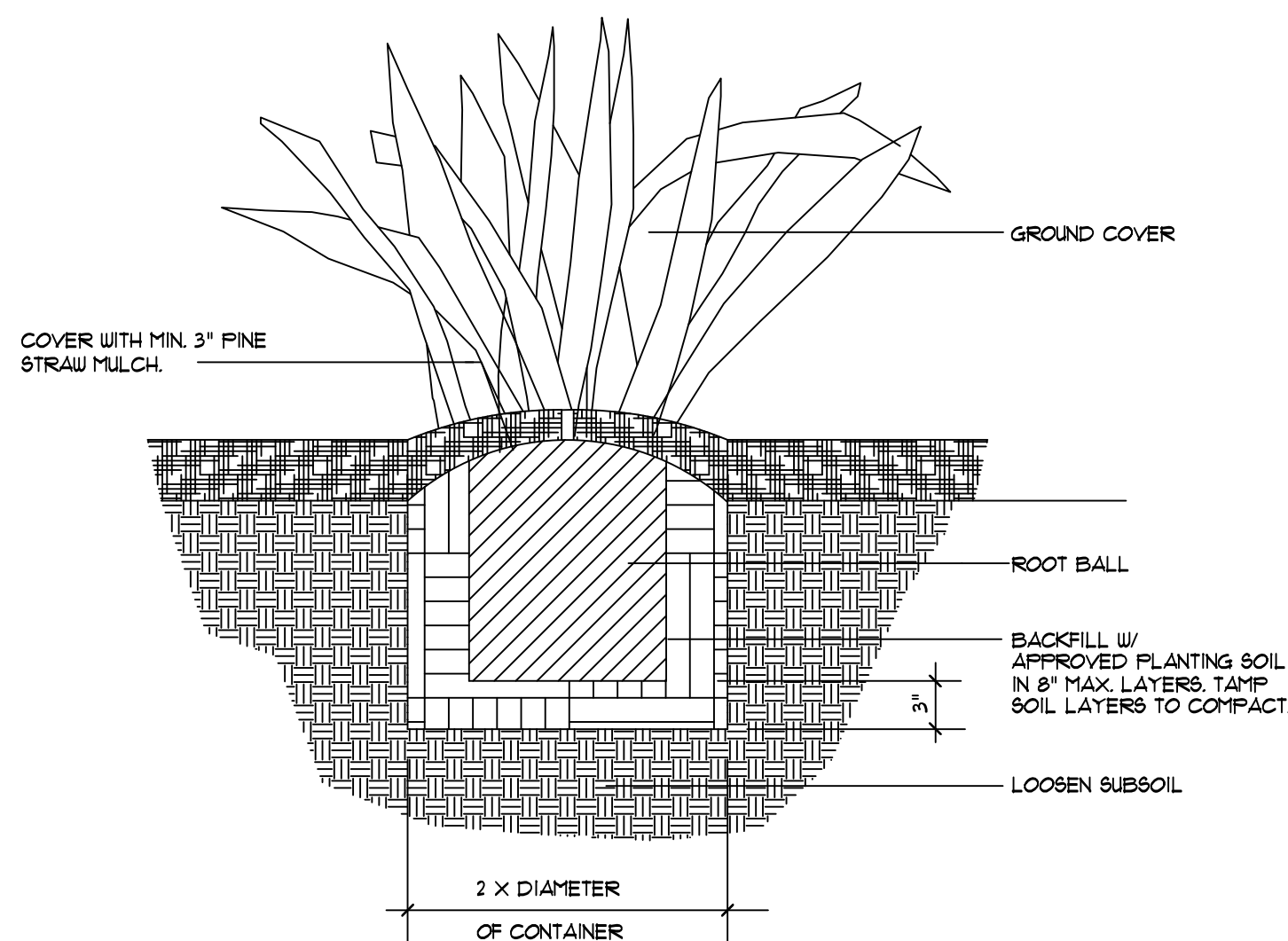
Sheet No.

THESE DRAWINGS ARE THE SOLE PROPERTY OF FLWB ARCHITECTS, APC AND ARE ISSUED AS INSTRUMENTS OF SERVICE. THESE DRAWINGS SHALL NOT BE COPIED, REPRODUCED OR USED IN ANY MANNER WITHOUT WRITTEN CONSENT OF FLWB ARCHITECTS, APC.



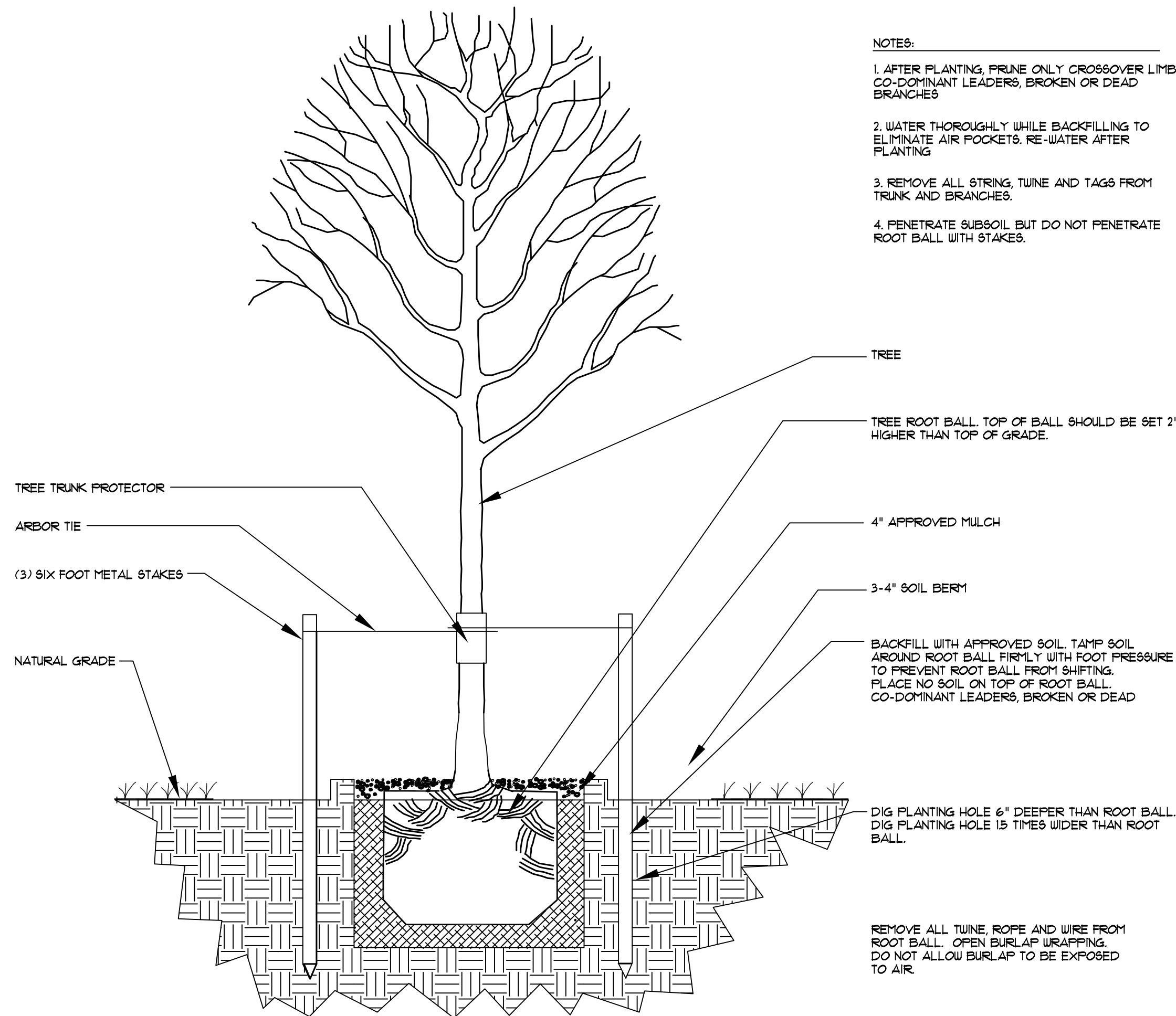
SHRUB PLANTING DETAIL

NT&



GROUND COVER PLANTING DETAIL

NT&

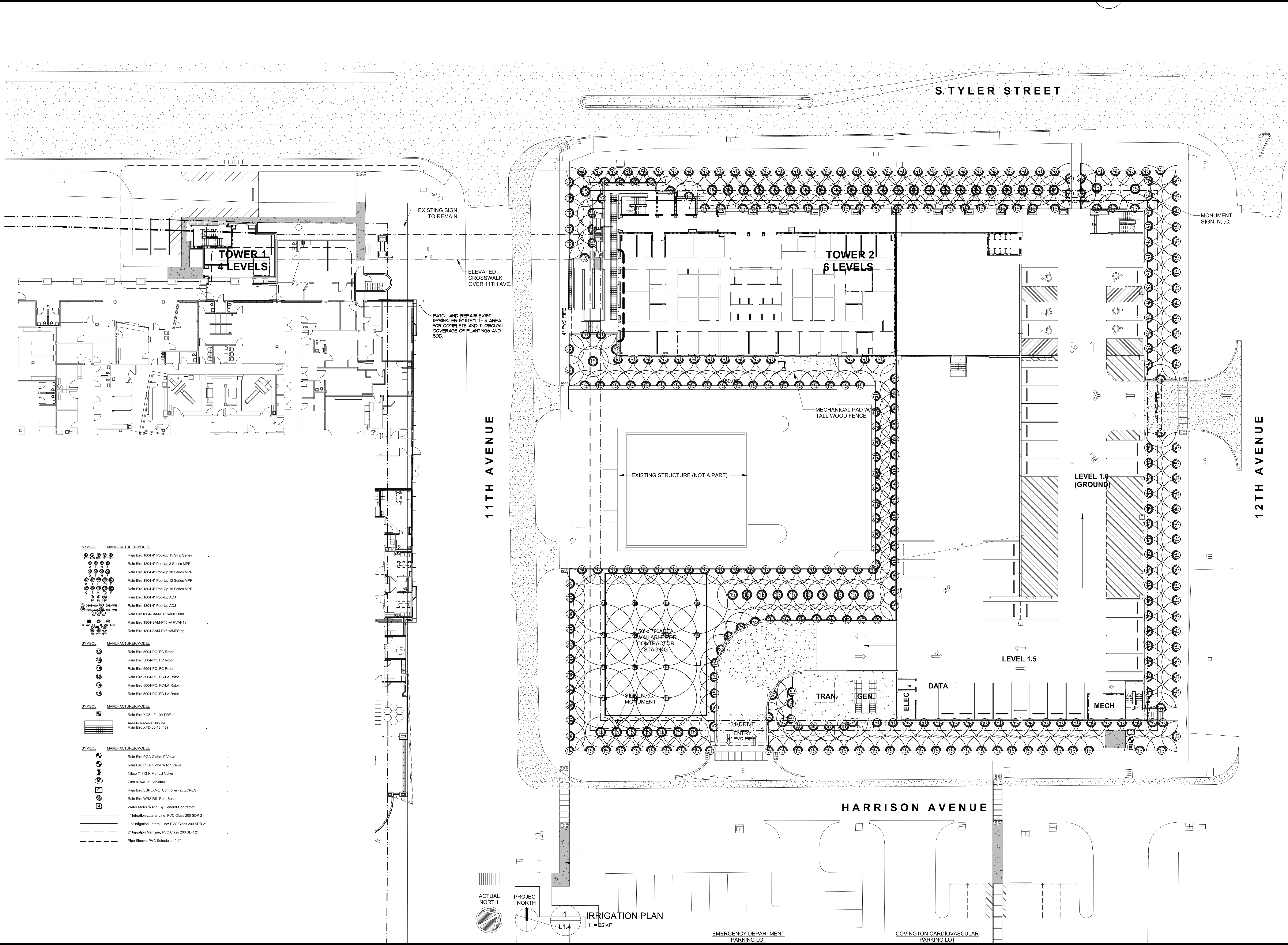


TREE PLANTING DETAIL

NT&

NOTES:

1. AFTER PLANTING, PRUNE ONLY CROSSOVER LIMBS, CO-DOMINANT LEADERS, BROKEN OR DEAD BRANCHES.
2. WATER THOROUGHLY WHILE BACKFILLING TO ELIMINATE AIR POCKETS. RE-WATER AFTER PLANTING.
3. REMOVE ALL STRING, TWINE AND TAGS FROM TRUNK AND BRANCHES.
4. PENETRATE SUBSOIL BUT DO NOT PENETRATE ROOT BALL WITH STAKES.



SYMBOL	MANUFACTURER/MODEL
	Rain Bird 1804 4\" Pop-Up 15 Strip Series
	Rain Bird 1804 4\" Pop-Up 8 Series MP/R
	Rain Bird 1804 4\" Pop-Up 10 Series MP/R
	Rain Bird 1804 4\" Pop-Up 12 Series MP/R
	Rain Bird 1804 4\" Pop-Up 15 Series MP/R
	Rain Bird 1804 4\" Pop-Up ADJ
	Rain Bird 1804 4\" Pop-Up ADJ
	Rain Bird 1804 4\" Pop-Up ADJ
	Rain Bird 1804-SAM-P45 w/MP200
	Rain Bird 1804-SAM-P45 w/MP200
	Rain Bird 1804-SAM-P45 w/MP200
	Rain Bird 1804-SAM-P45 w/MP200
	Rain Bird 1804-SAM-P45 w/MP200
	Rain Bird 1804-SAM-P45 w/MP200
	Rain Bird 1804-SAM-P45 w/MP200
	Rain Bird 1804-SAM-P45 w/MP200
	Rain Bird 1804-SAM-P45 w/MP200
	Rain Bird 1804-SAM-P45 w/MP200
	Rain Bird 1804-SAM-P45 w/MP200
	Rain Bird 1804-SAM-P45 w/MP200
	Rain Bird 1804-SAM-P45 w/MP200
	Rain Bird 1804-SAM-P45 w/MP200
	Rain Bird 1804-SAM-P45 w/MP200
	Rain Bird 1804-SAM-P45 w/MP200
	Rain Bird 1804-SAM-P45 w/MP200
	Rain Bird 1804-SAM-P45 w/MP200
	Rain Bird 1804-SAM-P45 w/MP200
	Rain Bird 1804-SAM-P45 w/MP200
	Rain Bird 1804-SAM-P45 w/MP200
	Rain Bird 1804-SAM-P45 w/MP200
	Rain Bird 1804-SAM-P45 w/MP200
	Rain Bird 1804-SAM-P45 w/MP200
	Rain Bird 1804-SAM-P45 w/MP200
	Rain Bird 1804-SAM-P45 w/MP200
	Rain Bird 1804-SAM-P45 w/MP200
	Rain Bird 1804-SAM-P45 w/MP200
	Rain Bird 1804-SAM-P45 w/MP200
	Rain Bird 1804-SAM-P45 w/MP200
	Rain Bird 1804-SAM-P45 w/MP200
	Rain Bird 1804-SAM-P45 w/MP200
	Rain Bird 1804-SAM-P45 w/MP200
	Rain Bird 1804-SAM-P45 w/MP200
	Rain Bird 1804-SAM-P45 w/MP200
	Rain Bird 1804-SAM-P45 w/MP200
	Rain Bird 1804-SAM-P45 w/MP200
	Rain Bird 1804-SAM-P45 w/MP200
	Rain Bird 1804-SAM-P45 w/MP200
	Rain Bird 1804-SAM-P45 w/MP200
	Rain Bird 1804-SAM-P45 w/MP200
	Rain Bird 1804-SAM-P45 w/MP200
	Rain Bird 1804-SAM-P45 w/MP200
	Rain Bird 1804-SAM-P45 w/MP200
	Rain Bird 1804-SAM-P45 w/MP200
	Rain Bird 1804-SAM-P45 w/MP200
	Rain Bird 1804-SAM-P45 w/MP200
	Rain Bird 1804-SAM-P45 w/MP200
	Rain Bird 1804-SAM-P45 w/MP200
	Rain Bird 1804-SAM-P45 w/MP200
	Rain Bird 1804-SAM-P45 w/MP200
	Rain Bird 1804-SAM-P45 w/MP200
	Rain Bird 1804-SAM-P45 w/MP200
	Rain Bird 1804-SAM-P45 w/MP200
	Rain Bird 1804-SAM-P45 w/MP200
	Rain Bird 1804-SAM-P45 w/MP200
	Rain Bird 1804-SAM-P45 w/MP200
	Rain Bird 1804-SAM-P45 w/MP200
	Rain Bird 1804-SAM-P45 w/MP200
	Rain Bird 1804-SAM-P45 w/MP200
	Rain Bird 1804-SAM-P45 w/MP200
	Rain Bird 1804-SAM-P45 w/MP200
	Rain Bird 1804-SAM-P45 w/MP200
	Rain Bird 1804-SAM-P45 w/MP200
	Rain Bird 1804-SAM-P45 w/MP200
	Rain Bird 1804-SAM-P45 w/MP200
	Rain Bird 1804-SAM-P45 w/MP200
	Rain Bird 1804-SAM-P45 w/MP200
	Rain Bird 1804-SAM-P45 w/MP200
	Rain Bird 1804-SAM-P45 w/MP200
	Rain Bird 1804-SAM-P45 w/MP200
	Rain Bird 1804-SAM-P45 w/MP200
	Rain Bird 1804-SAM-P45 w/MP200
	Rain Bird 1804-SAM-P45 w/MP200
	Rain Bird 1804-SAM-P45 w/MP200
	Rain Bird 1804-SAM-P45 w/MP200
	Rain Bird 1804-SAM-P45 w/MP200
	Rain Bird 1804-SAM-P45 w/MP200
	Rain Bird 1804-SAM-P45 w/MP200
	Rain Bird 1804-SAM-P45 w/MP200
	Rain Bird 1804-SAM-P45 w/MP200
	Rain Bird 1804-SAM-P45 w/MP200
	Rain Bird 1804-SAM-P45 w/MP200
	Rain Bird 1804-SAM-P45 w/MP200
	Rain Bird 1804-SAM-P45 w/MP200
	Rain Bird 1804-SAM-P45 w/MP200
	Rain Bird 1804-SAM-P45 w/MP200
	Rain Bird 1804-SAM-P45 w/MP200
	Rain Bird 1804-SAM-P45 w/MP200
	Rain Bird 1804-SAM-P45 w/MP200
	Rain Bird 1804-SAM-P45 w/MP200
	Rain Bird 1804-SAM-P45 w/MP200
	Rain Bird 1804-SAM-P45 w/MP200
	Rain Bird 1804-SAM-P45 w/MP200
	Rain Bird 1804-SAM-P45 w/MP200
	Rain Bird 1804-SAM-P45 w/MP200
	Rain Bird 1804-SAM-P45 w/MP200
	Rain Bird 1804-SAM-P45 w/MP200
	Rain Bird 1804-SAM-P45 w/MP200
	Rain Bird 1804-SAM-P45 w/MP200
	Rain Bird 1804-SAM-P45 w/MP200
	Rain Bird 1804-SAM-P45 w/MP200
	Rain Bird 1804-SAM-P45 w/MP200
	Rain Bird 1804-SAM-P45 w/MP200
	Rain Bird 1804-SAM-P45 w/MP200
	Rain Bird 1804-SAM-P45 w/MP200
	Rain Bird 1804-SAM-P45 w/MP200
	Rain Bird 1804-SAM-P45 w/MP200
	Rain Bird 1804-SAM-P45 w/MP200
	Rain Bird 1804-SAM-P45 w/MP200
	Rain Bird 1804-SAM-P45 w/MP200
	Rain Bird 1804-SAM-P45 w/MP200
	Rain Bird 1804-SAM-P45 w/MP200
	Rain Bird 1804-SAM-P45 w/MP200
	Rain Bird 1804-SAM-P45 w/MP200
	Rain Bird 1804-SAM-P45 w/MP200
	Rain Bird 1804-SAM-P45 w/MP200
	Rain Bird 1804-SAM-P45 w/MP200
	Rain Bird 1804-SAM-P45 w/MP200
	Rain Bird 1804-SAM-P45 w/MP200
	Rain Bird 1804-SAM-P45 w/MP200
	Rain Bird 1804-SAM-P45 w/MP200
	Rain Bird 1804-SAM-P45 w/MP200
	Rain Bird 1804-SAM-P45 w/MP200
	Rain Bird 1804-SAM-P45 w/MP200
	Rain Bird 1804-SAM-P45 w/MP200
	Rain Bird 1804-SAM-P45 w/MP200
	Rain Bird 1804-SAM-P45 w/MP200
	Rain Bird 1804-SAM-P45 w/MP200
	Rain Bird 1804-SAM-P45 w/MP200
	Rain Bird 1804-SAM-P45 w/MP200
	Rain Bird 1804-SAM-P45 w/MP200
	Rain Bird 1804-SAM-P45 w/MP200
	Rain Bird 1804-SAM-P45 w/MP200
	Rain Bird 1804-SAM-P45 w/MP200
	Rain Bird 1804-SAM-P45 w/MP200
	Rain Bird 1804-SAM-P45 w/MP200
	Rain Bird 1804-SAM-P45 w/MP200
	Rain Bird 1804-SAM-P45 w/MP200
	Rain Bird 1804-SAM-P45 w/MP200
	Rain Bird 1804-SAM-P45 w/MP200
	Rain Bird 1804-SAM-P45 w/MP200
	Rain Bird 1804-SAM-P45 w/MP200
	Rain Bird 1804-SAM-P45 w/MP200
	Rain Bird 1804-SAM-P45 w/MP200
	Rain Bird 1804-SAM-P45 w/MP200
	Rain Bird 1804-SAM-P45 w/MP200
	Rain Bird 1804-SAM-P45 w/MP200
	Rain Bird 1804-SAM-P45 w/MP200
	Rain Bird 1804-SAM-P45 w/MP200
	Rain Bird 1804-SAM-P45 w/MP200
	Rain Bird 1804-SAM-P45 w/MP200
	Rain Bird 1804-SAM-P45 w/MP200
	Rain Bird 1804-SAM-P45 w/

ACTUAL NORTH

PROJECT NORTH

1

L1.4

IRRIGATION PLAN

1" = 120'-0"

architecture
planning
interior design
landscape design
sustainable design
consulting

fl+WB
architects
a professional corporation in continuous practice since 1981

1404 GREENGATE DRIVE, SUITE 101
COWBOY, TEXAS 75043
800-983-1400

NO. 1

ISSUE

DATE

11th AVENUE PARKING GARAGE

AT

ST. TAMMANY PARISH HOSPITAL

FOR

ST. TAMMANY HEALTH SERVICES

1202 SOUTH TYLER STREET, COVINGTON, LA 70433

CONSTRUCTION DOCUMENTS

Date

05.NOV.2025

IRRIGATION PLAN

PLANTING PLAN

Job No.

220058.01

Drawn by

JRA

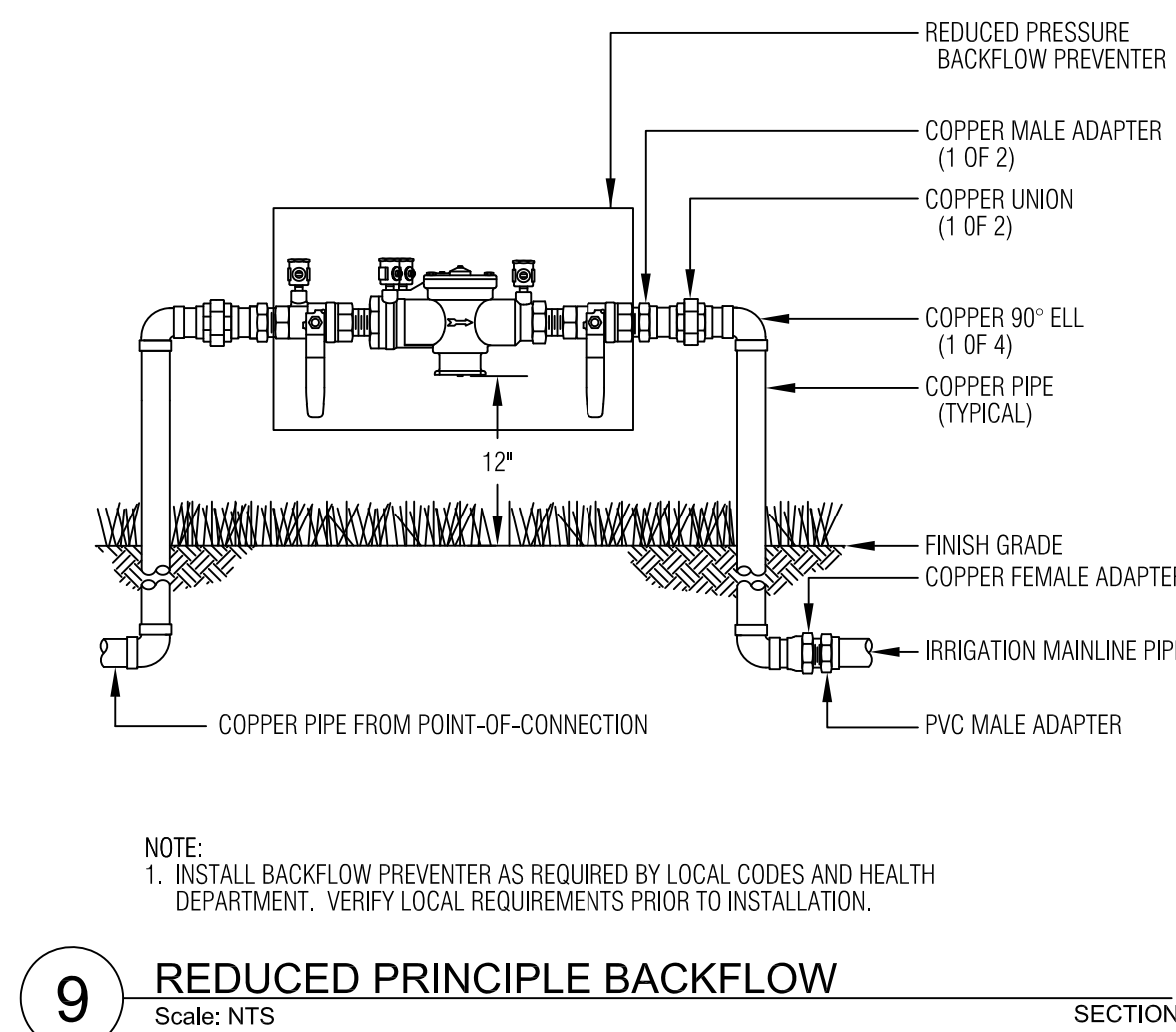
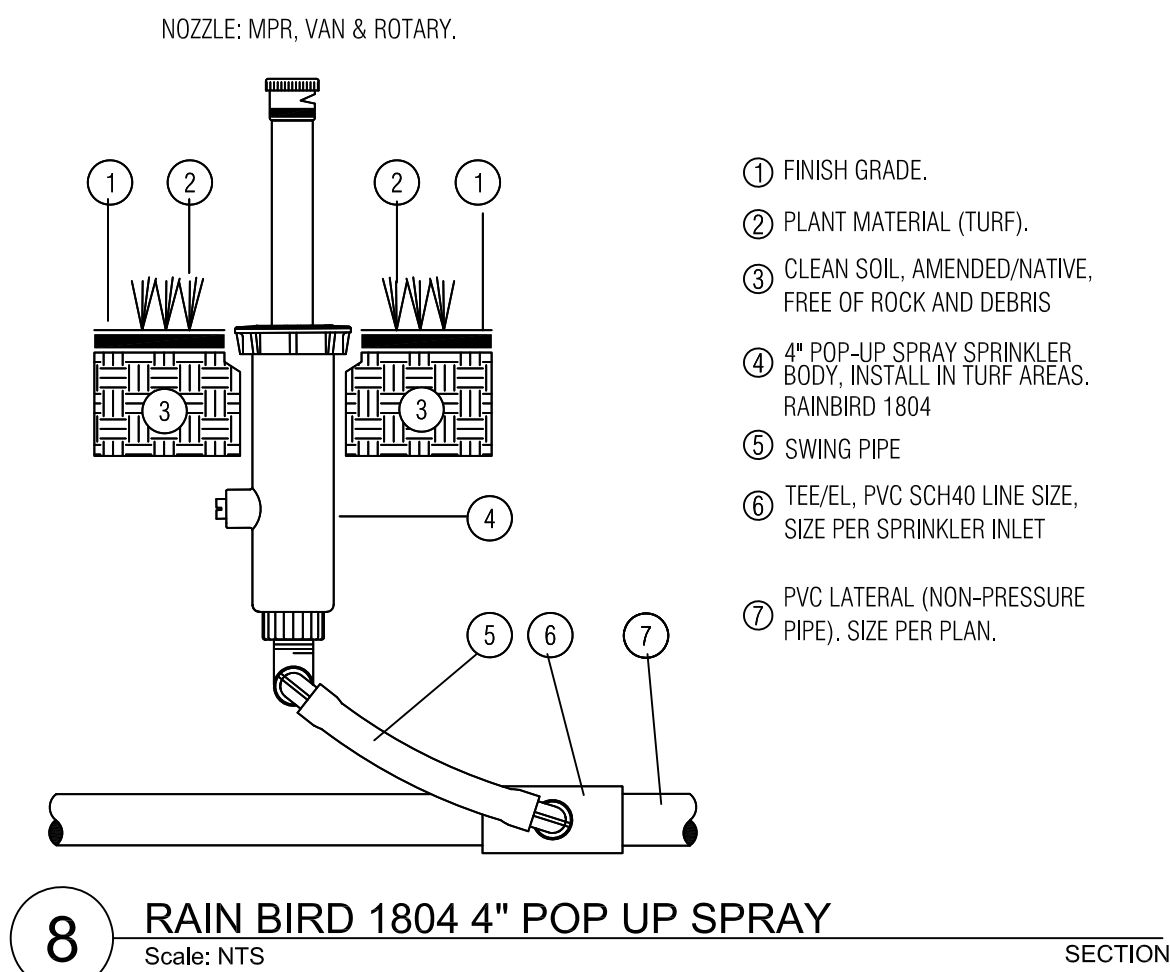
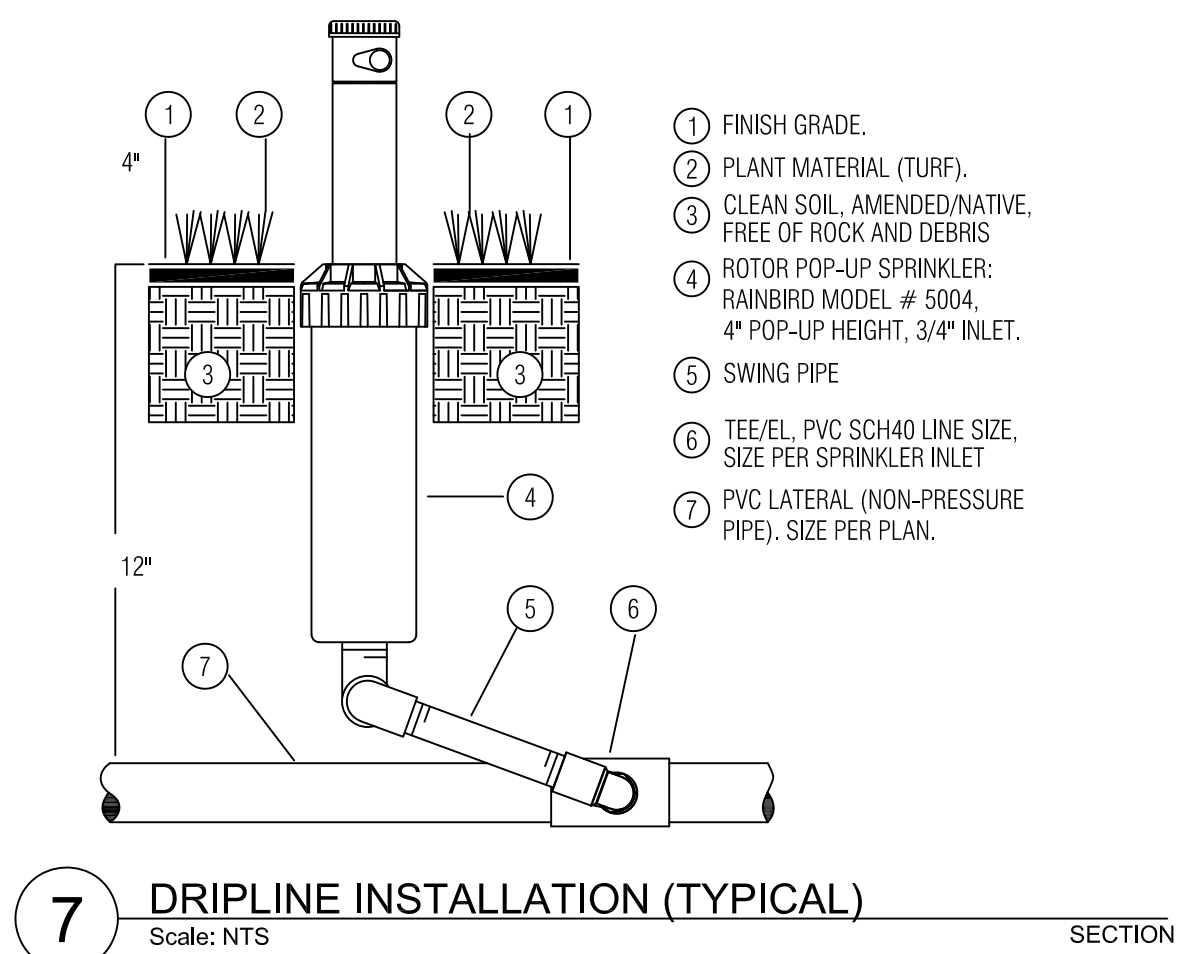
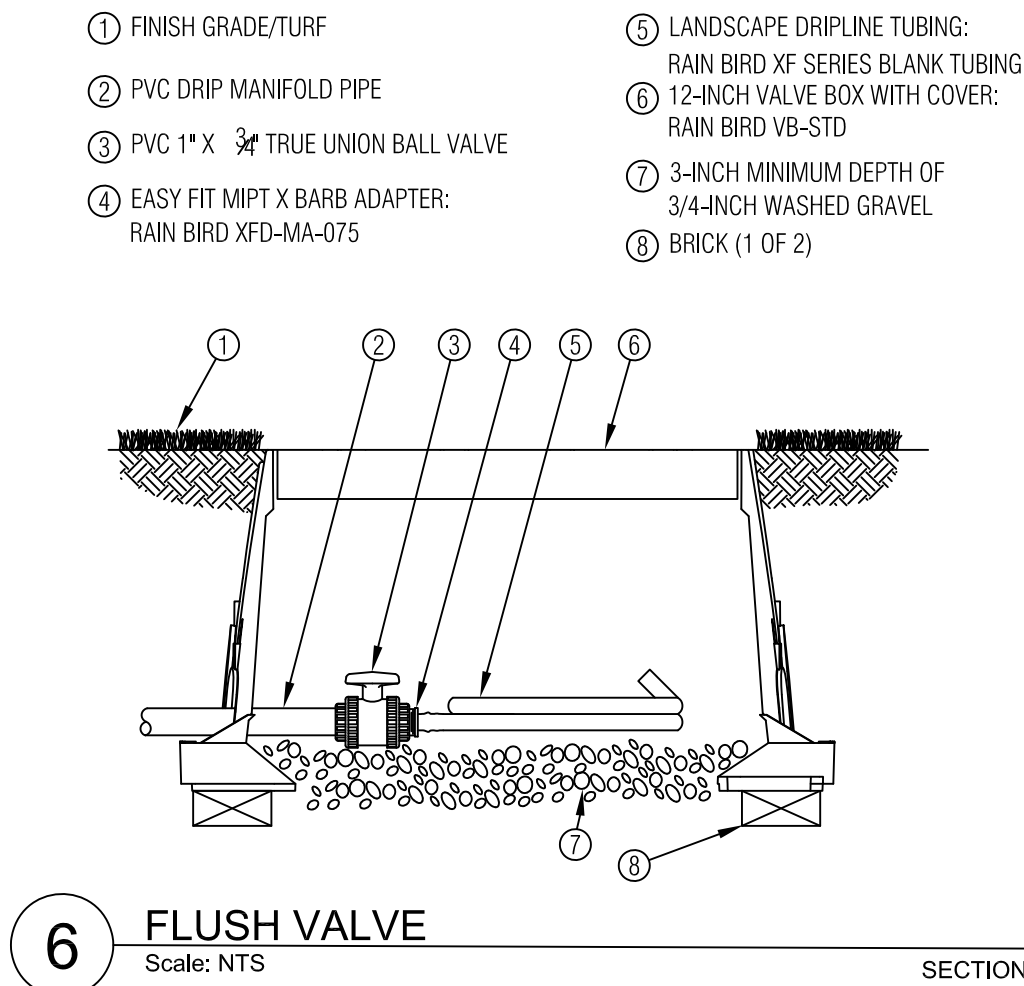
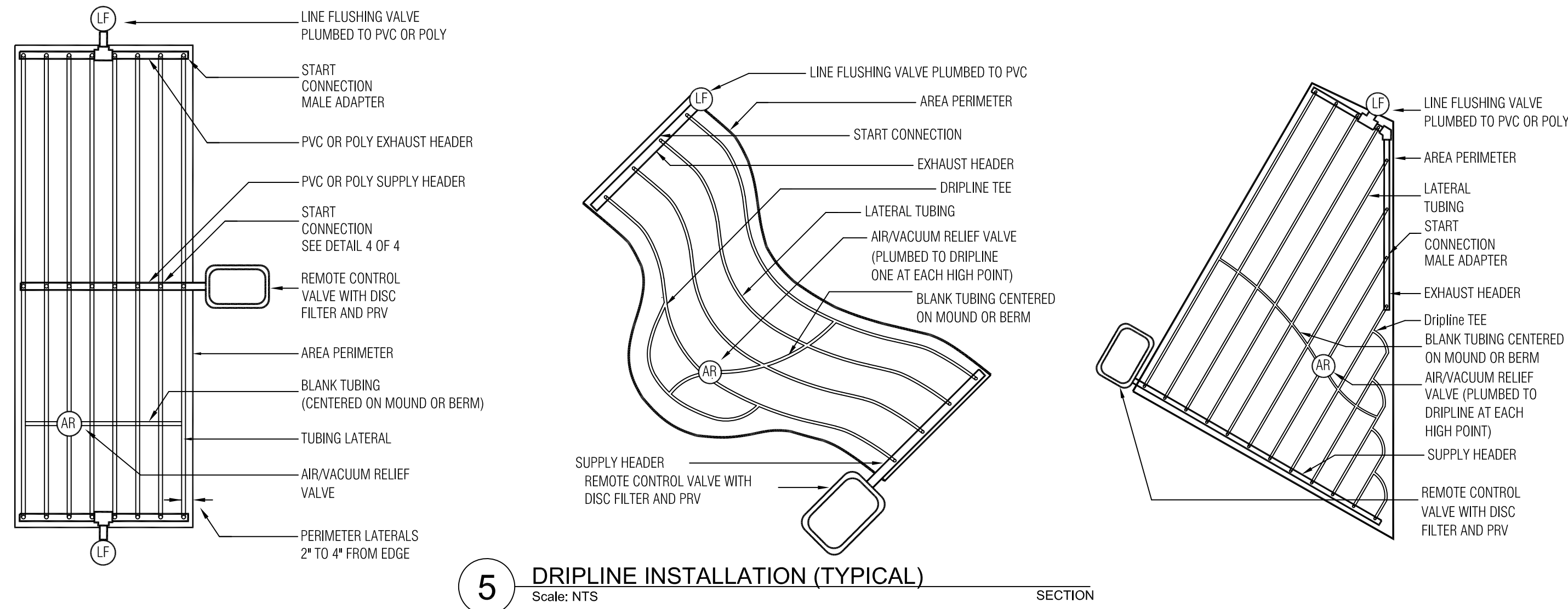
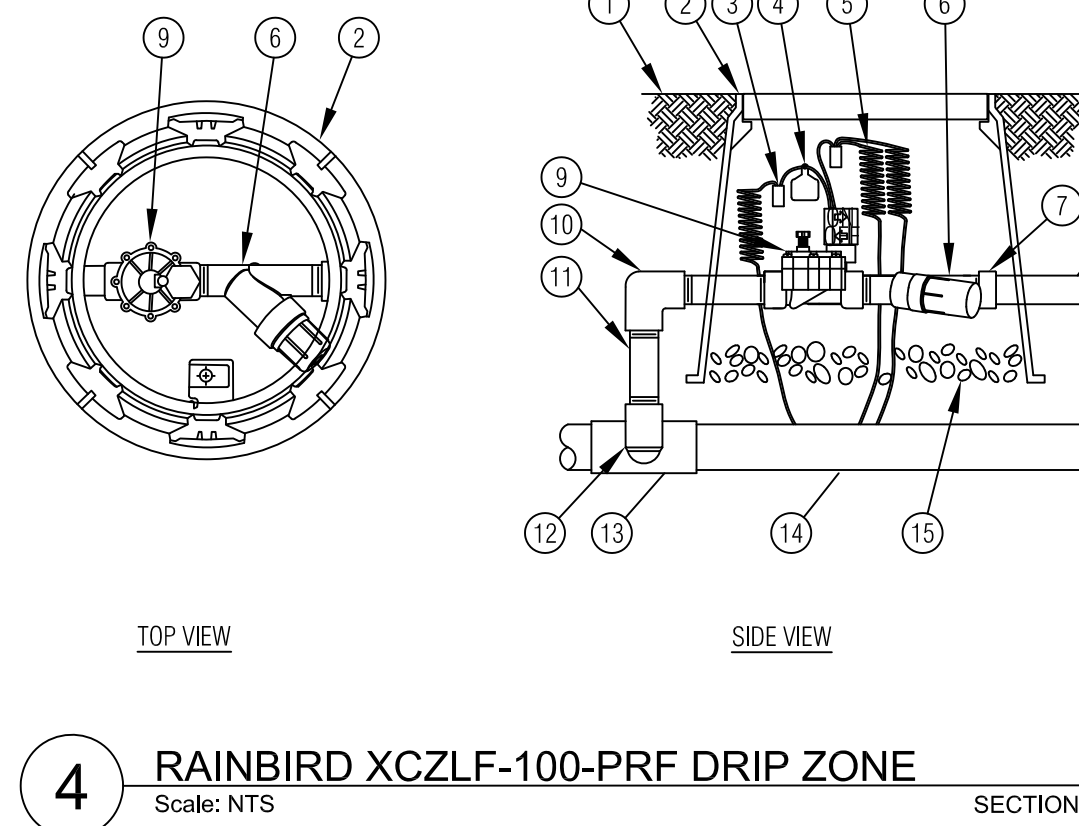
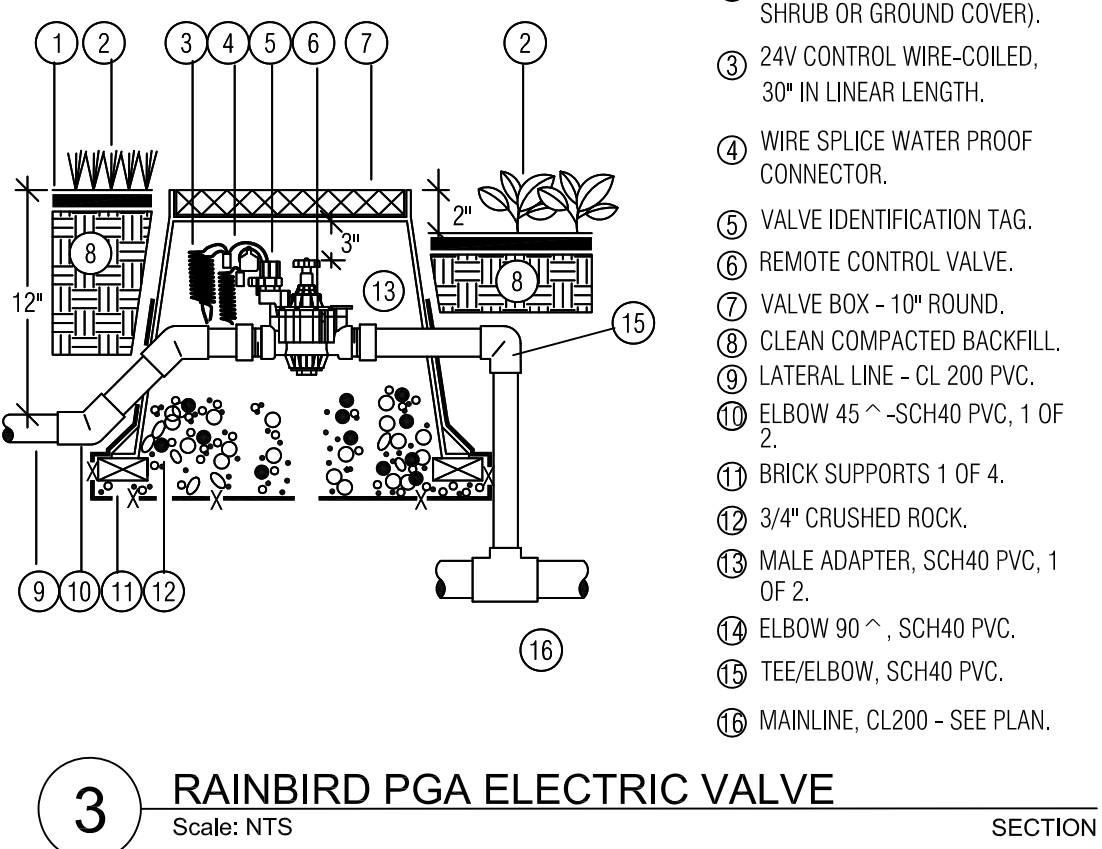
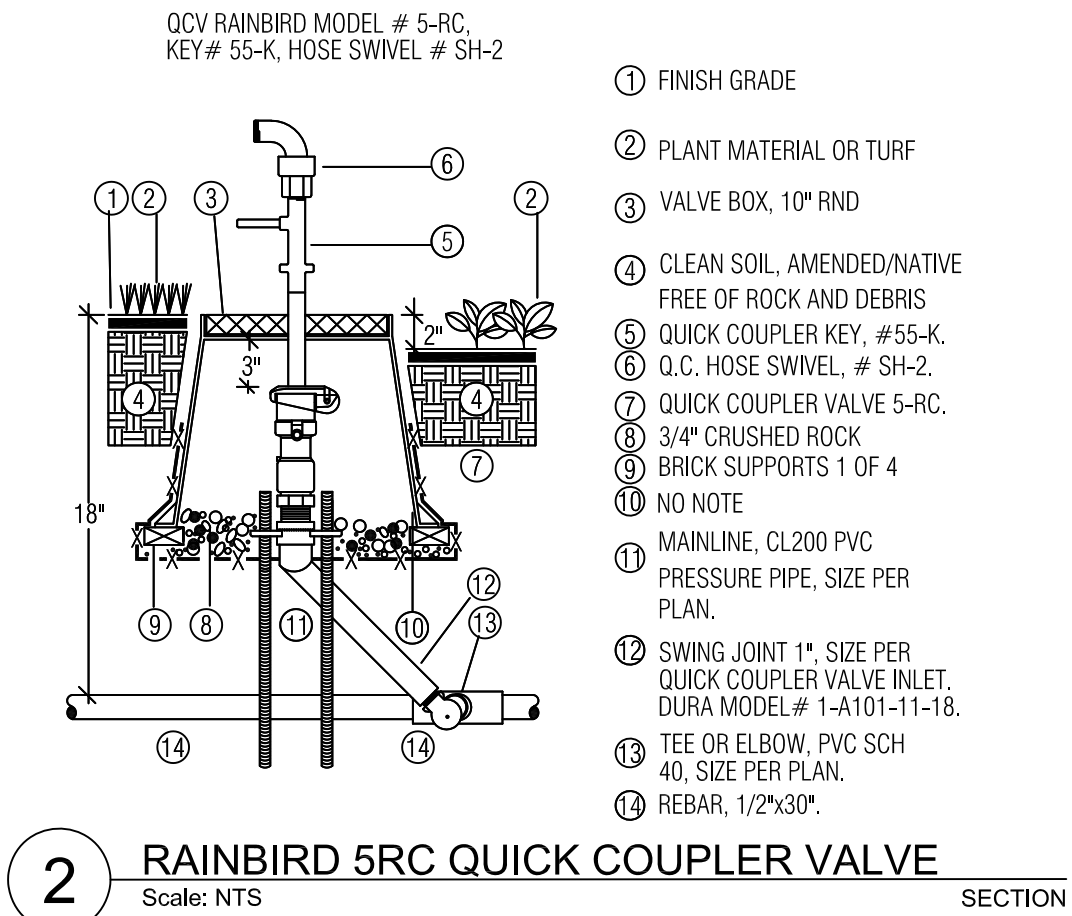
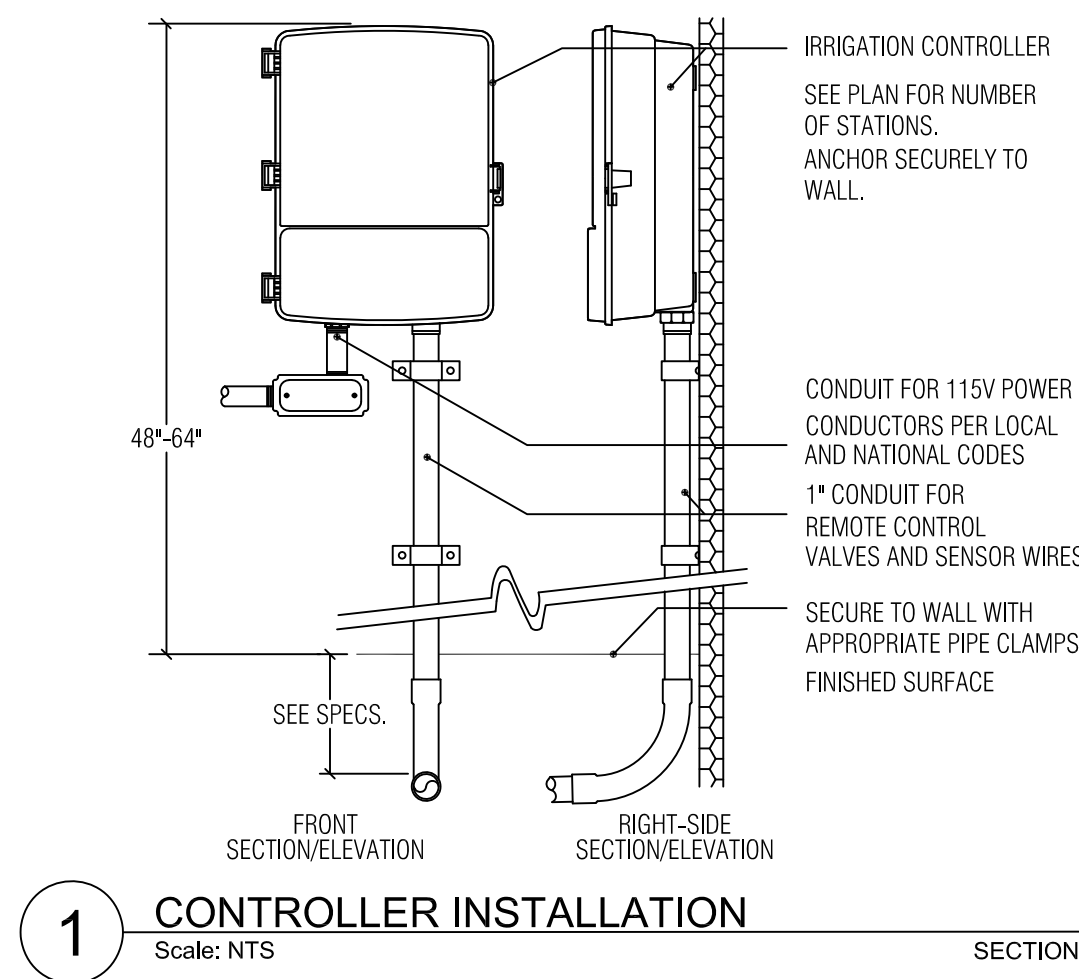
Checked by

JRA

L1.4

Sheet No.

THESE DRAWINGS ARE THE SOLE PROPERTY OF FLWB ARCHITECTS, APC AND ARE ISSUED AS INSTRUMENTS OF SERVICE. THESE DRAWINGS SHALL NOT BE COPIED, REPRODUCED OR USED IN ANY MANNER WITHOUT WRITTEN CONSENT OF FLWB ARCHITECTS, APC.



GENERAL SPECIFICATIONS

1. THE IRRIGATION SYSTEM IS DIAGRAMMATIC BASED UPON THE INFORMATION PROVIDED BY THE OWNER OR THE OWNER'S REPRESENTATIVE. THE SUCCESSFUL CONTRACTOR IS RESPONSIBLE TO INSTALL A SYSTEM THAT WILL PROPERLY COVER ALL AREAS INDICATED ON THE DESIGN. ACTUAL LAYOUT OF PIPING, SPRINKLER HEADS, VALVES, CONTROLLERS AND OTHER RELATED EQUIPMENT SHALL BE DETERMINED ON SITE. MINOR FIELD CHANGES SHALL BE MADE AT NO ADDITIONAL COST TO THE OWNER.

IT IS THE RESPONSIBILITY OF THE IRRIGATION CONTRACTOR TO BE FAMILIAR WITH ALL GRADE DIFFERENCES, LOCATIONS OF WALLS, STRUCTURES AND UTILITIES AND MAKE THE NECESSARY ADJUSTMENTS TO ACCOMMODATE THE IRRIGATION SYSTEM AS SHOWN ON THE DRAWINGS. THERE MAY BE TIMES WHEN IT IS OBVIOUS IN THE FIELD THAT UNKNOWN OBSTRUCTIONS, GRADES OR DIMENSIONS THAT EXIST MIGHT NOT HAVE BEEN CONSIDERED IN THE ENGINEERING, SUCH OBSTRUCTIONS SHOULD BE BROUGHT TO THE ATTENTIONS OF THE OWNER'S AUTHORIZED REPRESENTATIVE. IN THE EVENT THAT THIS NOTIFICATION IS NOT PERFORMED, THE IRRIGATION CONTRACTOR SHALL ASSUME FULL RESPONSIBILITY FOR ANY REVISIONS AND COSTS THAT OCCUR.

2. THIS SYSTEM SHALL BE INSTALLED USING ACCEPTED AND QUALITY INSTALLATION STANDARDS AS USED IN THE INDUSTRY. ALL MANUFACTURERS SPECIFICATIONS WILL BE FOLLOWED.

3. MAINLINE SHALL BE BURIED A MINIMUM OF 18-24\"/>

4. THERE WILL BE NO SUBSTITUTIONS OR CHANGES TO THE IRRIGATION DESIGN ALLOWED WITHOUT DIRECT, WRITTEN APPROVAL FROM THE LANDSCAPE ARCHITECT.

5. SYSTEM DESIGN IS BASED ON PRESSURE AND FLOW INFORMATION PROVIDED BY MEP, IRRIGATION CONTRACTOR SHALL VERIFY WATER PRESSURES PRIOR TO CONSTRUCTION. REPORT DIFFERENCES BETWEEN REQUIREMENTS AND THE ACTUAL READINGS TO THE OWNER'S REPRESENTATIVE.

6. PIPING SHOWN IN PAVED AREA WITHOUT SLEEVE IS DIAGRAMMATIC AND SHALL BE LOCATED INSIDE OF THE PLANTED AREA OR TURF AREA APPROXIMATELY 1\"/>

7. ALL VALVES SHALL BE PLACED IN VALVE BOXES AS SHOWN IN THE DETAILS AND ALL ELECTRICAL CONNECTIONS SHALL BE SEALED WITH WATERPROOF CONNECTORS. CONTROL WIRE SHALL BE SOLID COPPER WIRE U.L. APPROVED FOR DIRECT BURIAL IN THE GROUND. SEE DETAILS.

8. CONTROLLER, SENSOR, TAP AND BACKFLOW LOCATIONS ARE AS SHOWN ON THE PLAN OR AS STATED IN THE DETAILS AND LEGEND. ALL INFORMATION IS TO BE VERIFIED PRIOR TO ANY INSTALLATION OF THE PROJECT.

9. THE IRRIGATION CONTRACTOR IS RESPONSIBLE FOR ALL CLEAN UP ASSOCIATED WITH HIS WORK.

10. IRRIGATION CONTRACTOR SHALL ALL PROVIDE THE FIRST WINTERIZATION, SPRING TURN ON, HEAD ADJUSTMENTS AND CONTROLLER MAINTENANCE IN BID.

11. IRRIGATION CONTRACTOR IS RESPONSIBLE FOR SUBMITTING AN AS BUILT DRAWING TO THE OWNER WITHIN 14 DAYS OF COMPLETION OF PROJECT. AFTER FINAL APPROVAL OF IRRIGATION SYSTEM.