



301 Industrial Blvd.
Tullahoma, TN 37388
Office: 931.454.9940

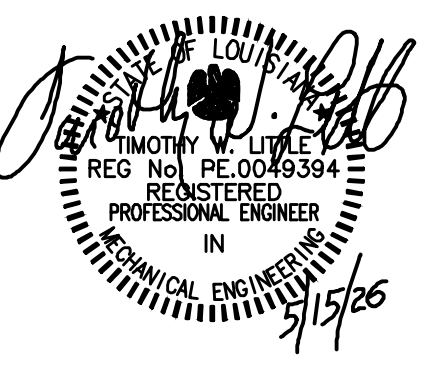
2605 Elm Hill Pk/St C
Nashville, TN 37214
Office: 615.678.6022

olgenengineering.com
OLG Project # 05826



MOLLENKOPF DESIGN GROUP, LLC
49 Music Square W-Suite 600
Nashville, Tennessee 37203

615.296.9146
www.theMDGllc.com

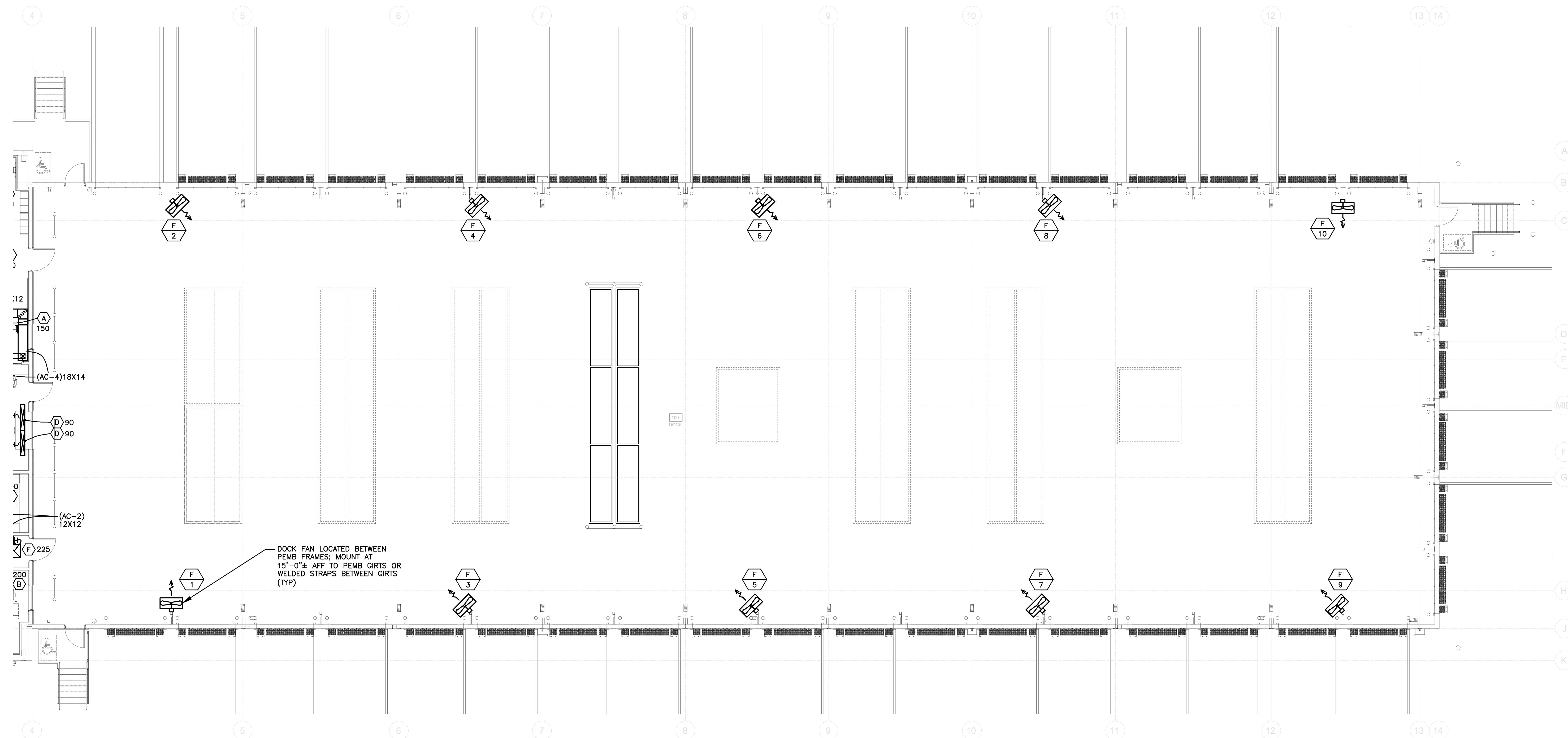


Contractor:
SCHWOB
BUILDING COMPANY
1350 LAKESHORE DRIVE
SUITE 160
COPPELL, TX 76006



A New Service Center for:
OLD DOMINION FREIGHT LINE
BATON ROUGE, LA
8601 TOM DRIVE
BATON ROUGE, LA 70815

PERMIT ISSUE 05.15.2026



1 DOCK HVAC PLAN
1/8" = 1'-0"



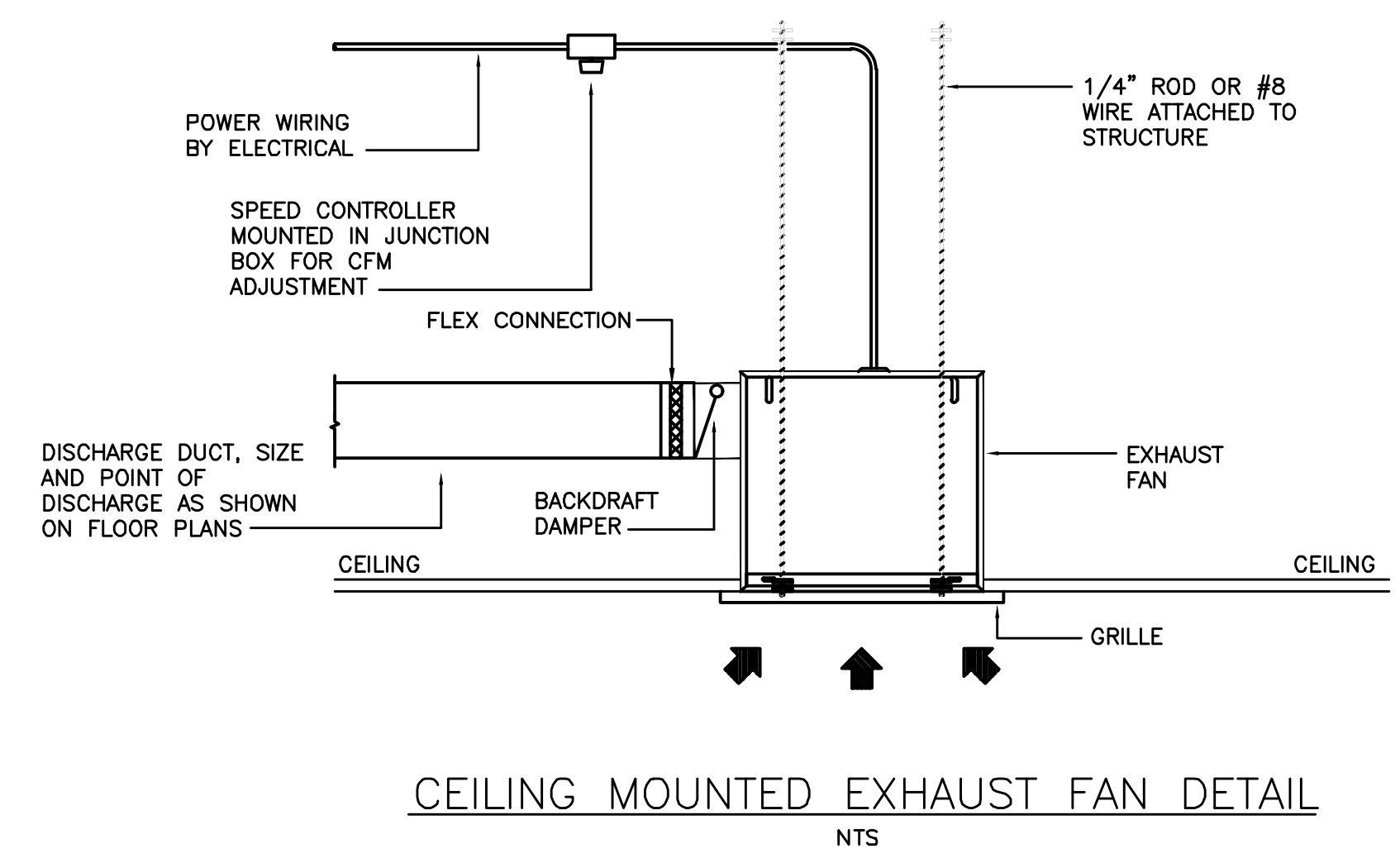
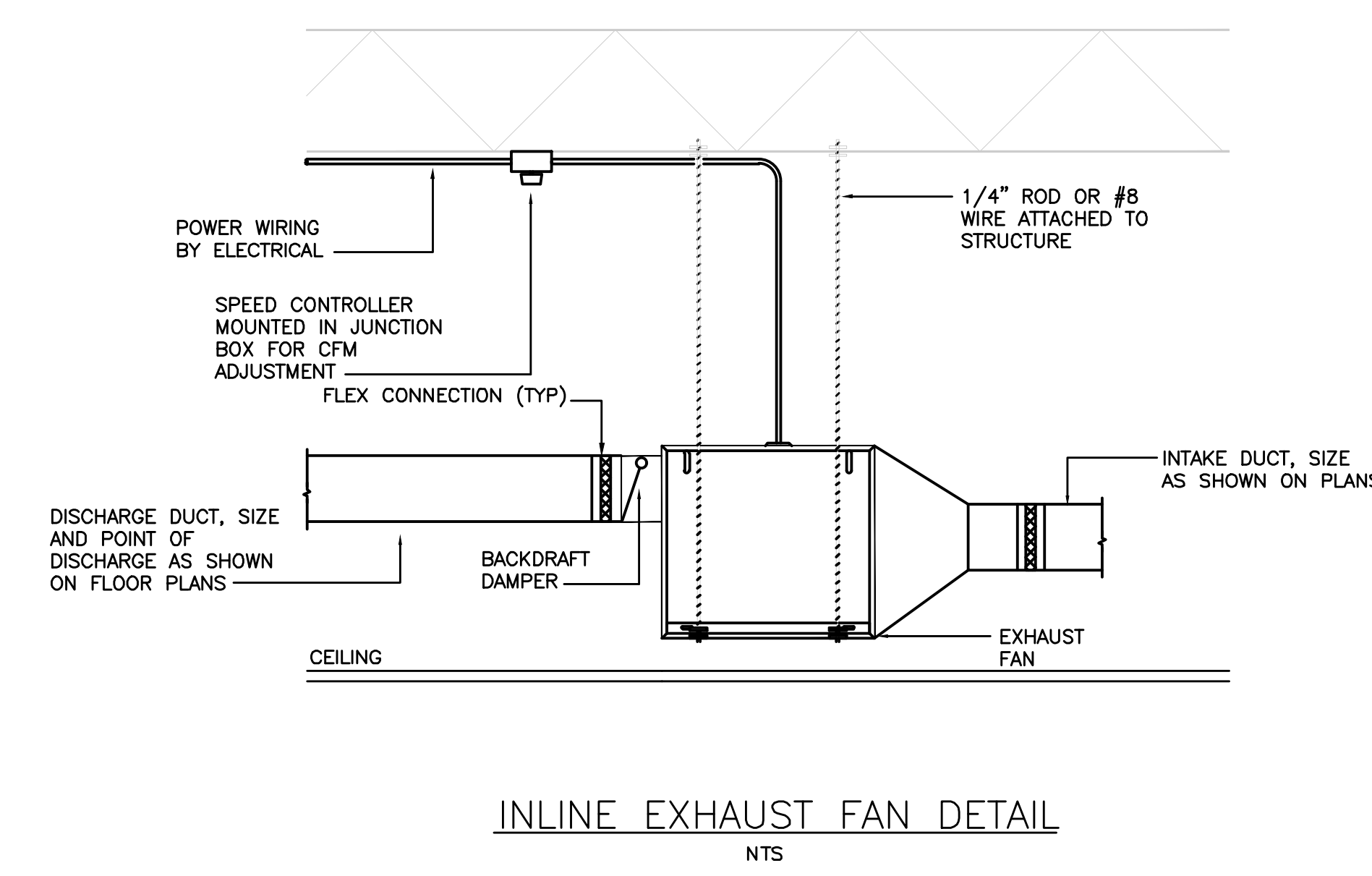
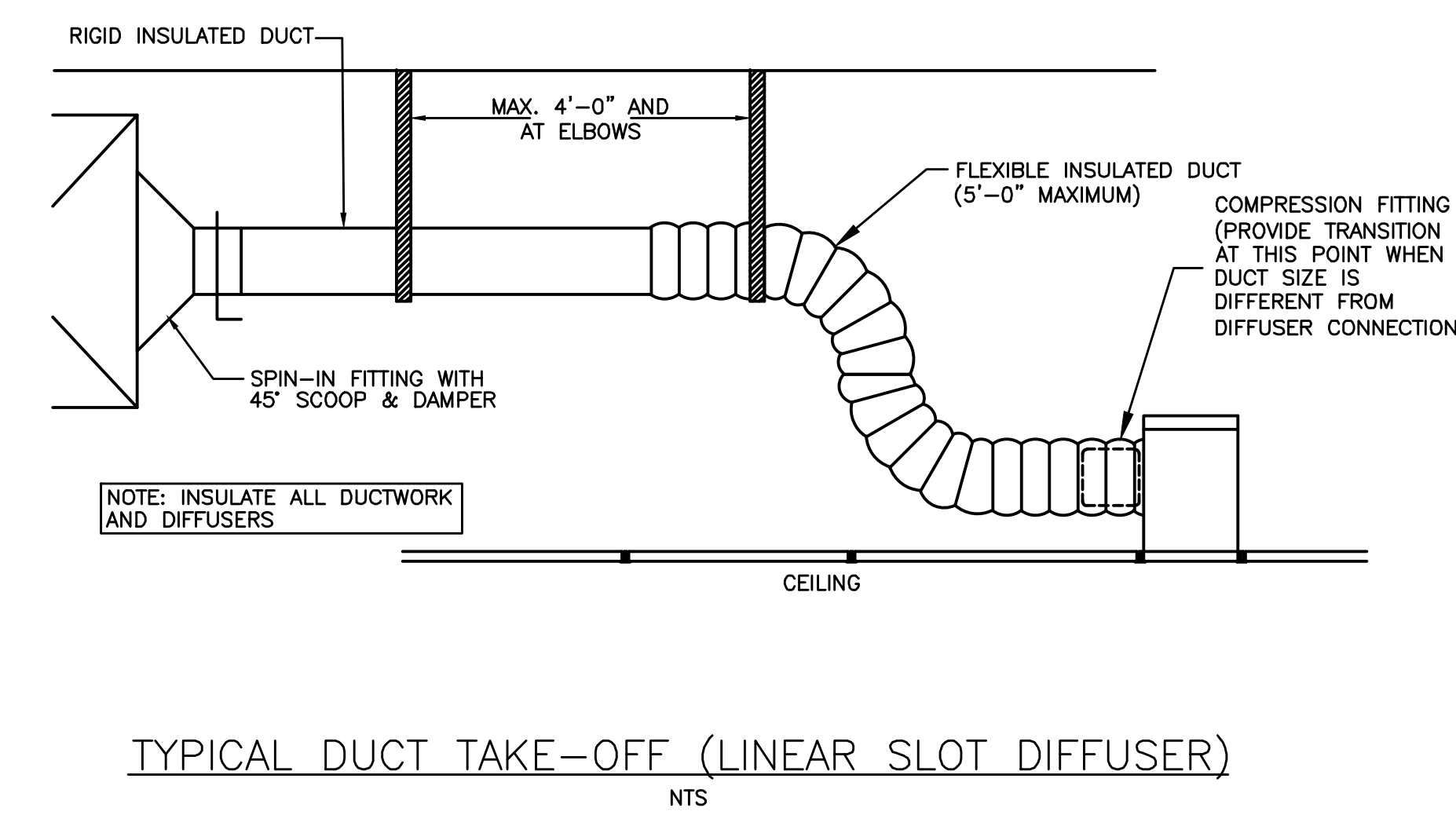
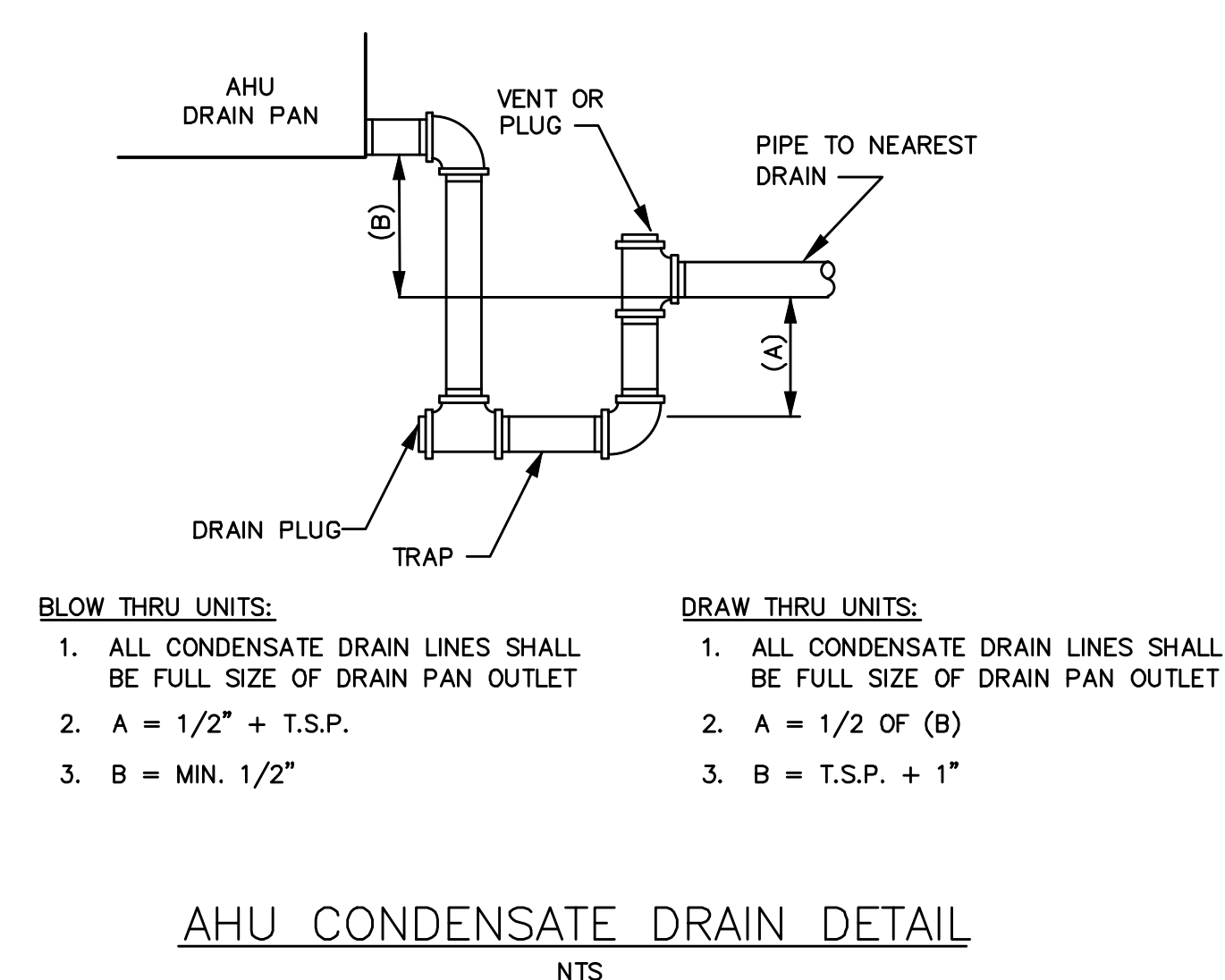
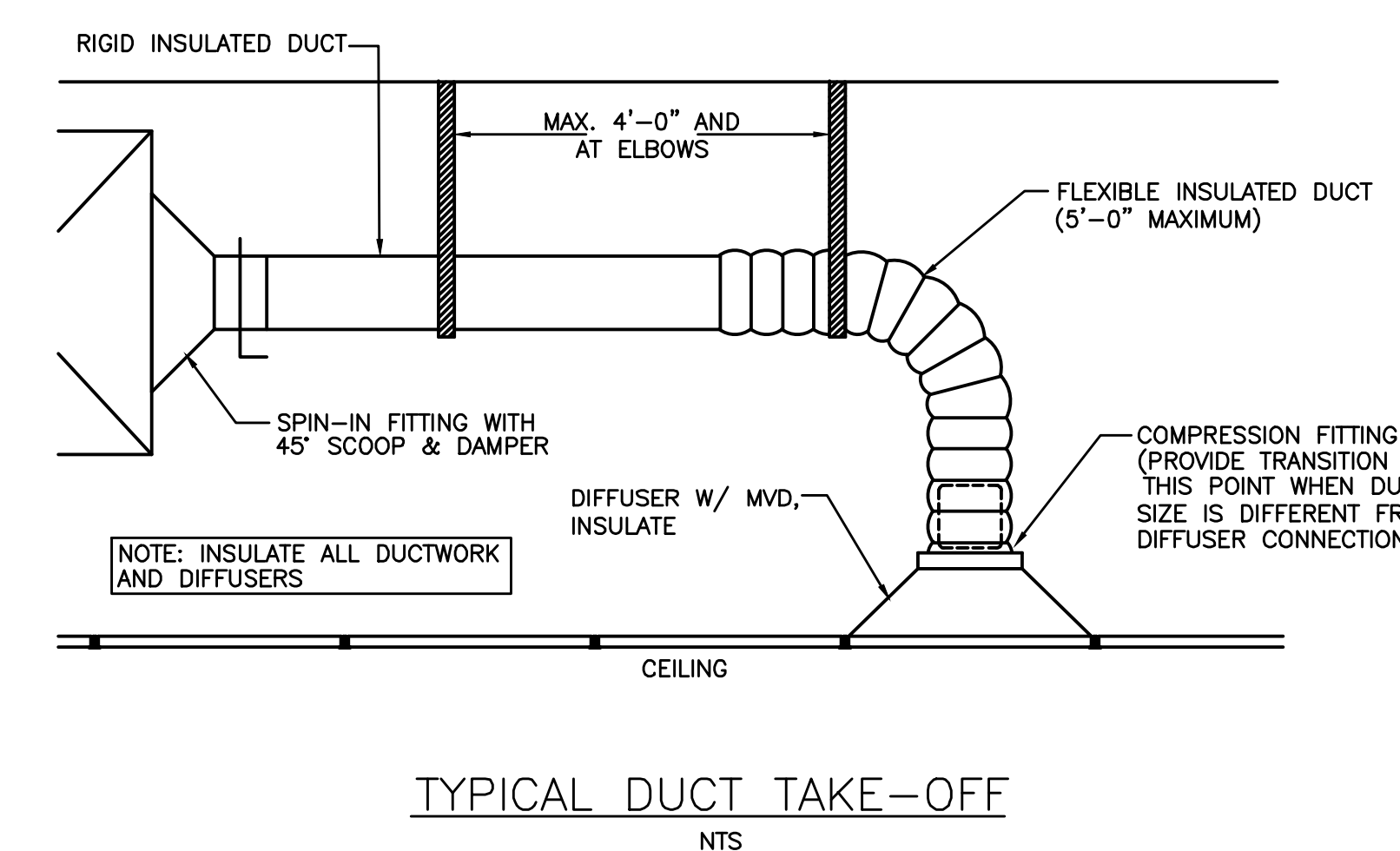
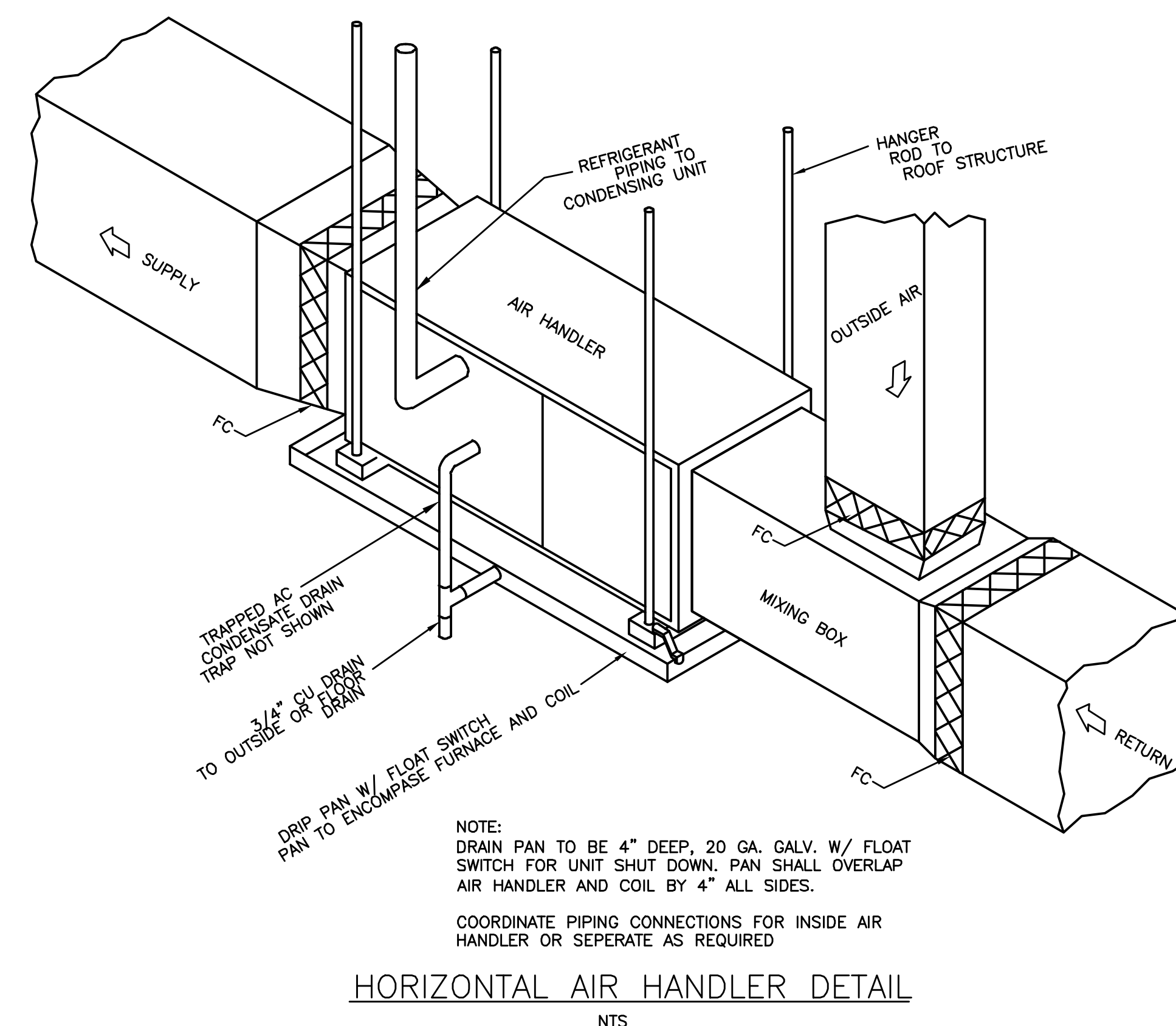
Project No. 25074.00

The Architect hereby reserves its common law copyright and other property rights in these plans, ideas and designs which are not to be reproduced, changed or copied in any form or manner whatsoever, nor are they to be assigned to any third party without first obtaining the express written permission from the Architect. The drawing is not final or to be used for construction until signed by the Architect.

Sheet Name:
DOCK HVAC PLAN

Sheet Number:

M1.2



Contractor:
Schwob
BUILDING COMPANY
1350 LAKESHORE DRIVE
SUITE 160
COPPELL, TX 76006



A New Service Center for:
OLD DOMINION FREIGHT LINE
BATON ROUGE, LA
8601 TOM DRIVE
BATON ROUGE, LA 70815

PERMIT ISSUE 05.15.2026

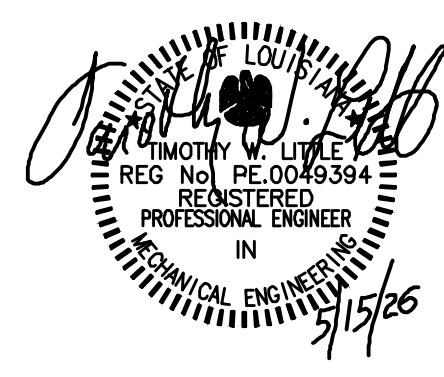
Project No. 25074.00

The Architect hereby reserves its common law copyright and other property rights in these plans, ideas and designs which are not to be reproduced, changed or copied in any form or manner whatsoever, nor are they to be assigned to any third party without first obtaining the express written permission from the Architect. The drawing is not final or to be used for construction until signed by the Architect.

Sheet Name:
HVAC DETAILS

Sheet Number:

M2.1



Contractor:
Schwab
BUILDING COMPANY
1350 LAKESHORE DRIVE
SUITE 160
COPPELL, TX 76006



A New Service Center for:
OLD DOMINION FREIGHT LINE
BATON ROUGE, LA
8601 TOM DRIVE
BATON ROUGE, LA 70815

PERMIT ISSUE 05.15.2026

DUCTLESS SPLIT SYSTEM A/C SCHEDULE (HIGH WALL)

INDOOR UNIT	
MARK	AC-5
CONFIGURATION	HIGH WALL
SERVICE	DATA
SUPPLY AIR DATA	
AIRFLOW (CFM)	450
FAN DRIVE / MOTOR POWER (W)	DIRECT / 30
COOLING DATA	
TOTAL (MBH)	18
SENSIBLE (MBH)	10.8
CAPACITY RANGE (MBH)	4.3 - 18
ENT AIR DB / WB (F)	80 / 67
UNIT DATA	
ELECTRICAL (V/PH/Hz)	208-230/1/60 FED FROM COND UNIT
ACCESSORIES	CONDENSATE PUMP W/FASCIA KIT, WIRED REMOTE LOW VOLTAGE THERMOSTAT / TEMPERATURE CONTROLLER
FILTERS	PERMANENT WASHABLE (PROVIDE W/ SPARE)
MANUFACTURER	MTSUBISHI
MODEL	PKA-AL18NL
OUTDOOR UNIT	
MARK	CU-5
COOLING DATA	
NOMINAL TONNAGE	1-1/2
AMBIENT TEMP (F)	95
EER2 / SEER2 @AHR1 STD	11.0 / 19.5
UNIT DATA	
REFRIGERANT	R-454B
NO. OF COMPRESSORS	1
CAPACITY CONTROL	VARIABLE SPEED INVERTER
ACCESSORIES	CONDENSER COIL HAIL GUARD, LOW AMBIENT COOLING
ELECTRICAL (VOLTS/PH/Hz)	208-230/1/60
MCA / BREAKER SIZE (AMPS)	16 / 20
MANUFACTURER	MTSUBISHI
MODEL	PUY-AK18NL
REFRIGERANT LINES AND ACCESSORIES: SIZE REFRIGERANT LINES AND PROVIDE ACCESSORIES PER EQUIPMENT MANUFACTURER RECOMMENDATIONS.	

SPLIT SYSTEM HEAT PUMP SCHEDULE

AIR HANDLING UNIT				
MARK	AC-1	AC-2	AC-3	AC-4
CONFIGURATION	HORIZONTAL	HORIZONTAL	HORIZONTAL	HORIZONTAL
SERVICE	TRAINING	SMALL OFFICES	OPEN OFFICE	DISPATCH
SUPPLY AIR DATA				
AIRFLOW (CFM)	540	740	1,220	1,410
EXTERNAL SP (IN WC)	0.5	0.5	0.5	0.5
OUTSIDE AIR (CFM)	100	115	175	275
BLOWER DRIVE/HP	DIRECT / 1/3	DIRECT / 1/2	DIRECT / 1/2	DIRECT / 1/3
COOLING DATA				
TOTAL (MBH)	18.5	23.2	34.6	40.6
SENSIBLE (MBH)	13.2	17.1	26.9	30.3
ENT AIR DB / WB (F)	80 / 67	80 / 67	80 / 67	80 / 67
HEATING DATA				
CAPACITY (MBH)	17.7 @ 47° (F)	22.0 @ 47° (F)	32.0 @ 47° (F)	38.5 @ 47° (F)
RETURN AIR TEMP (F)	70	70	70	70
AUX. ELECT. HEAT KW/STAGES	2.88 @ 208	3.60 @ 208	7.21 @ 208	7.21 @ 208
UNIT DATA				
ELECTRICAL (VOLTS/PH/Hz)	208/1/60	208/1/60	208/1/60	208/1/60
ELECTRICAL MCAMCOCP	21/25	25/25	48/50	50/50
ACCESSORIES	SINGLE POINT POWER, TXV, HONEYWELL VISION PRO 8000TH8321 SERIES PROGRAMMABLE THERMOSTAT, MOTORIZED OA DAMPER	SINGLE POINT POWER, TXV, HONEYWELL VISION PRO 8000TH8321 SERIES PROGRAMMABLE THERMOSTAT, MOTORIZED OA DAMPER	SINGLE POINT POWER, TXV, HONEYWELL VISION PRO 8000TH8321 SERIES PROGRAMMABLE THERMOSTAT, MOTORIZED OA DAMPER	SINGLE POINT POWER, TXV, HONEYWELL VISION PRO 8000TH8321 SERIES PROGRAMMABLE THERMOSTAT, MOTORIZED OA DAMPER
FILTERS	THROW-AWAY	THROW-AWAY	THROW-AWAY	THROW-AWAY
MANUFACTURER	TRANE	TRANE	TRANE	TRANE
MODEL	5TAM5B01AC21	5TAM5C03AC21	5TAM5D06AC41	5TAM5D06AC41
HEAT PUMP				
MARK	HP-1	HP-2	HP-3	HP-4
COOLING DATA				
NOMINAL TONS	1-1/2	2	3	3-1/2
AMBIENT TEMPERATURE (F)	95	95	95	95
EER2 @ AHR1 STD	11.7	11.7	11.7	15.2
SEER2 @ AHR1 STD	14.3	14.3	15.2	15.2
HSPF2 @AHR1 STD	7.50	7.50	7.80	7.5
COP @ 47° F	3.60	3.60	3.80	3.80
HEATING DATA				
CAPACITY (MBH)	17.7	25.0	32.0	38.5
AMBIENT TEMPERATURE (F)	47	47	47	47
UNIT DATA				
REFRIGERANT	R-454B	R-454B	R-454B	R-454B
NO. OF COMPRESSORS	1	1	1	1
ELECTRICAL (VOLTS/PH/Hz)	208/1/60	208/1/60	460/3/60	460/3/60
ELECTRICAL MCAMCOCP	12/20	13/20	7/15	9/15
ACCESSORIES	LOUVERED CONDENSER COIL HAIL GUARDS, LOW AMBIENT COOLING	LOUVERED CONDENSER COIL HAIL GUARDS, LOW AMBIENT COOLING	LOUVERED CONDENSER COIL HAIL GUARDS, LOW AMBIENT COOLING	LOUVERED CONDENSER COIL HAIL GUARDS, LOW AMBIENT COOLING
MANUFACTURER	TRANE	TRANE	TRANE	TRANE
MODEL	5TWR4018A1	5TWR4024A1	5TWA4036A4	5TWA4042A4
REFRIGERANT LINES AND ACCESSORIES: SIZE REFRIGERANT LINES AND PROVIDE ACCESSORIES PER EQUIPMENT MANUFACTURER RECOMMENDATIONS.				

AIR DEVICE SCHEDULE

MARK	NECK SIZE (INCHES)	TYPE				MOUNTING				DUTY				AIR THROW (FT@50 FPM)	STATIC PRESSURE DROP AT MAX CFM	PRICE MODEL NUMBER	MAX. NC	NOTES
		DIFFUSER	REGISTER	GRILLE	DOOR GRILLE	LAY-IN SURFACE	FLOOR	DUCT	ROOF	SUPPLY	RETURN	EXHAUST	INTAKE					
A	6	X				X								7	0.03	SPD	20	1,3,6,8,12,16,18
B	8	X				X								9	0.02	SPD	20	1,3,6,8,12,16,18
C	6	X				X								8	0.03	SPD	20	1,3,6,8,11,16,18
D	8/2(2)1x48	X				X								19	0.05	SDS100	23	2,5,7,16,18,27
E	22X10	X				X									0.02	80F	20	2,3,6,10,15,16,18
F	22X22	X				X									0.02	80F	20	2,3,6,10,12,16,18
G	8	X				X								9	0.15	NOTE 28	25	1,3,6,8,12,28
AIR DEVICE NOTES (SOME NOTES MAY NOT BE USED ON THIS PROJECT)																		
1. STEEL																		
2. ALUMINUM																		
3. WHITE FINISH																		
4. MILL FINISH																		
5. ARCHITECT TO SELECT COLOR																		
6. FIXED PATTERN																		
7. ADJUSTABLE PATTERN																		
8. LOUVERED FACE																		
9. HINGED, PERFORATED FACE																		
10. 1/2 X 1/2 X 1/2 INCH EGGRATE FACE																		
11. 12 X 12 INCH MODULE																		
12. 24 X 24 INCH MODULE - FULL FACE																		
13. 24 X 24 INCH MODULE - FILLER PANEL																		
14. 48 X 24 INCH MODULE																		
15. 24 X 12 INCH MODULE																		
16. OPPOSED BLADE DAMPER																		
17. SQUARE TO ROUND ADAPTER AS REQUIRED (FIELD FAB OR FACTORY)																		
NOTE: SUBMITTALS FOR AIR DEVICES OTHER THAN THE MANUFACTURER AND MODEL NO. SPECIFIED SHALL INCLUDE ALL APPLICABLE PERFORMANCE DATA (THROW, PRESSURE DROP, NC, ETC.).																		
PROVIDE INSULATED BACK FOR SUPPLY DIFFUSERS																		
18. PROVIDE PLASTER FRAME IN GYP BOARD OR PLASTER CEILINGS AS REQ'D.																		
19. SIGHT TIGHT CHEVRON BLADE DOOR GRILLE W/AUXILIARY FRAME																		
20. ADJUSTABLE COUNTERBALANCED BACKDRAFT/RELIEF DAMPER; RUSKIN MODEL CBD-2.																		
21. 6 INCH DRAINABLE STATIONARY LOUVER WITH BIRD SCREEN; UNITED ENERTECH MODEL FL-D-6																		
22. 6 INCH DRAINABLE ADJUSTABLE LOUVER WITH BIRD SCREEN AND 120V MOTORIZED OPERATOR WITH SPRING RETURN UNITED ENERTECH MODEL AFL-D-6																		
23. NON DUCTED PANEL																		
24. 4 INCH DRAINABLE STATIONARY BRICK VENT WITH BIRD SCREEN; UNITED ENERTECH MODEL BY SERIES, VERIFY FLANGE ROOMS WITH ARCH.																		
25. 6 INCH DRAINABLE COMBINATION LOUVER WITH BIRD SCREEN AND 120V MOTORIZED OPERATOR WITH SPRING RETURN UNITED ENERTECH MODEL CFL-D-6																		
26. ADJUST FOR FULL VERTICAL DISCHARGE																		
27. PROVIDE WITH LINED/INSULATED PLENUM BOX																		
28. VARIABLE FLOW DIFFUSER WITH HEATING AND COOLING THERMOSTAT; ACUTHERM TF-HC SERIES WITH WIRED DIGITAL WALL ADJUSTER																		

FAN SCHEDULE

MARK	EF-1	EF-2	EF-3	EF-4	EF-5	EF-6	F-1 THRU 10
SERVICE	JANITOR	WMN DRIVERS	OFFICE WMN	OFFICE MEN	MEN DRIVERS	RISER	DOCK
TYPE	IN-LINE CABINET FAN	IN-LINE CABINET FAN	IN-LINE CABINET FAN	IN-LINE CABINET FAN	IN-LINE CABINET FAN	CEILING EXHAUST	WALL MOUNTED
ROOF/WALL OPENING (INCHES)	COMMON LOUVER						LOUVER
DRIVE	DIRECT	DIRECT	DIRECT	DIRECT	DIRECT	DIRECT	DIRECT
MOTOR HORSEPOWER	27.3 WATTS	37 WATTS	39 WATTS	68 WATTS	113 WATTS	249 WATTS	12 HP
AIRFLOW (CFM)	50	90	100	375	500	950	
EXT. STATIC PRESSURE (IN WC)	0.38	0.38	0.38	0.38	0.38	0.25	-
ELECTRICAL (VOLTS/PH/Hz)	115/1/60	115/1/60	115/1/60	115/1/60	115/1/60	115/1/60	277/1/60
MANUFACTURER	COOK	COOK	COOK	COOK	COOK	COOK	DAYTON
MODEL	GN-128	GN-166	GN-166	GN-186	GN-622	GC-822	1VCG6
ACCESSORIES	INLET GRILLE, BACKDRAFT DAMPER, SPEED CONTROL, VIBRATION ISOLATORS	INLET GRILLE, BACKDRAFT DAMPER, SPEED CONTROL, VIBRATION ISOLATORS	INLET GRILLE, BACKDRAFT DAMPER, SPEED CONTROL, VIBRATION ISOLATORS	INLET GRILLE, BACKDRAFT DAMPER, SPEED CONTROL, VIBRATION ISOLATORS	INLET GRILLE, BACKDRAFT DAMPER, SPEED CONTROL, VIBRATION ISOLATORS	BACKDRAFT DAMPER, SPEED CONTROLLER, VIBRATION ISOLATORS, INLET GRILLE, LINE VOLTAGE THERMOSTAT	VIBRATION ISOLATORS, WALL MOUNTING HARDWARE, OSHA APPROVED FAN GUARD, DISCONNECT SWITCH, 30" BLADE, 33" DIAMETER HOUSING, BLACK GALVANIZED BLADE FINISH
CONTROL	CONTINUOUS	TOILET LIGHTS	TOILET LIGHTS	CONTINUOUS	TOILET LIGHTS	LINE VOLT T-STATT / INTERLOCK WITH LOUVER	STARTER BY ELECTRICAL

LOUVER SCHEDULE

MARK	L-1	L-2	L-3	L-4
SERVICE	INTAKE	RELIEF	RELIEF	INTAKE
TYPE	STATIONARY	STATIONARY	STATIONARY	COMBINATION
DEPTH (INCHES)	6	6	6	6
LOUVER WIDTH (INCHES)	24	24	24	24
LOUVER HEIGHT (INCHES)	24	24	24	24
PENTHOUSE HEIGHT (INCHES)	-	-	-	-
MINIMUM FREE AREA (SF)	1.57	1.57	1.57	1.57
AIRFLOW (CFM)	1,175	1,175	1,175	1,360
STATIC PRESS. DROP (IN WC)	0.07	0.07	0.07	0.07
MOTORIZED DAMPER	NO	NO	NO	YES
ELECTRICAL (V/PH/Hz)	-	-	-	115/1/60
INTERLOCK	-	-	-	EF-6
SMOKE DAMPER	NO	NO	NO	NO
LOUVER MATERIAL	ALUMINUM	ALUMINUM	ALUMINUM	ALUMINUM
ACCESSORIES	-	-	-	-
FINISH	SELECTED BY ARCHITECT	SELECTED BY ARCHITECT	SELECTED BY ARCHITECT	SELECTED BY ARCHITECT
BIRDSCREEN	YES	YES	YES	YES
CERTIFICATIONS / RATINGS	-	-	-	-
MANUFACTURER	UNITED ENERTECH	UNITED ENERTECH	UNITED ENERTECH	UNITED ENERTECH
MODEL	FL-D6 W/ FLANGE	FL-D6 W/ FLANGE	FL-D6 W/ FLANGE	CFL-D6 W/ FLANGE

ELECTRIC HEATER SCHEDULE

MARK	H-1	H-2
TYPE	SUSPENDED	WALL HEATER
SERVICE	RISER	JANITOR
CAPACITY (KW)	5.0	3
ELECTRICAL (VOLTS/PH/Hz)	208/1/60	208/1/60
ACCESSORIES	REMOTE LOW VOLTAGE THERMOSTAT WITH METAL GUARD, VERTICAL (DOWNFLOW) DISCHARGE MOUNTING BRACKET	UNIT MOUNTED THERMOSTAT, CIRCUIT BREAKER, SURFACE MOUNT KIT
MANUFACTURER	MARKEL	MARKEL
MODEL	F1F5105N	F3423

Project No. 25074.00

The Architect hereby reserves its common law copyright and other property rights in these plans, ideas and designs which are not to be reproduced, changed or copied in any form or manner whatsoever, nor are they to be assigned to any third party without first obtaining the express written permission from the Architect. The drawing is not final or to be used for construction until signed by the Architect.

Sheet Name:
HVAC SCHEDULES

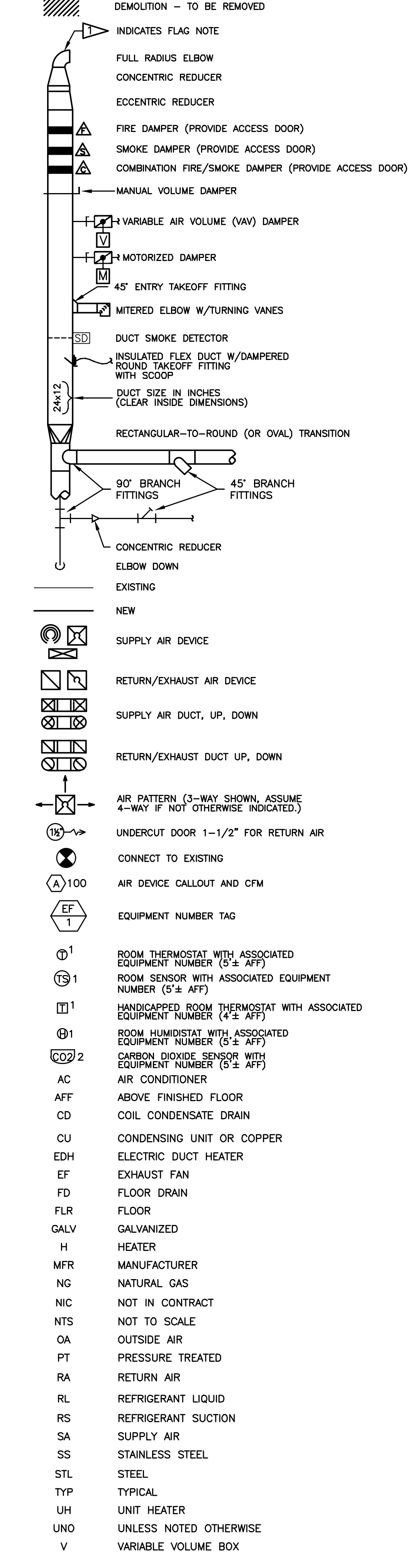
Sheet Number:

M3.1

MECHANICAL NOTES

- THESE DRAWINGS HAVE BEEN DEVELOPED FROM THE BEST AVAILABLE INFORMATION. CONTRACTOR SHALL FIELD VERIFY ALL FIELD CONDITIONS, DIMENSIONS, CLEARANCES, LOCATION OF EXISTING UTILITIES, ETC. PRIOR TO BIDDING, FABRICATION, OR INSTALLATION. DO NOT SCALE FROM THESE DRAWINGS.
- COORDINATE INSTALLATION AMONG TRADES TO AVOID INTERFERENCES. WHERE PIPING AND DUCTWORK ARE ROUTED TOGETHER, INSTALL PIPING BELOW DUCTWORK FOR MAINTENANCE ACCESSIBILITY. INSTALL ALL MECHANICAL SYSTEM COMPONENTS TO PERMIT INSTALLATION OF CEILINGS AT HEIGHTS INDICATED ON THE ARCHITECTURAL DRAWINGS.
- INSTALL ALL HVAC EQUIPMENT PER MANUFACTURER RECOMMENDATIONS, INCLUDING REQUIRED MAINTENANCE CLEARANCES. PIPING, DUCTWORK, AND CONDUIT ROUTING SHALL NOT BLOCK REQUIRED ACCESS TO EQUIPMENT DOORS OR PANELS.
- DESIGN BASIS FOR HVAC SYSTEMS, INCLUDING ASSOCIATED PIPING AND ELECTRICAL WORK, IS THE SCHEDULED EQUIPMENT. SUBSTITUTION OF OTHER EQUIPMENT MAY REQUIRE POWER CHANGES IN PIPING, ELECTRICAL POWER SUPPLY, MAINTENANCE CLEARANCES, STRUCTURAL SUPPORTS, ETC. ALL SUCH CHANGES SHALL BE COORDINATED THROUGHOUT ALL TRADES, AND SHALL BE PERFORMED WITH NO EXTENSION OF SCHEDULE, AND AT NO ADDITIONAL COST TO THE OWNER.
- ARCHITECTURAL GLAZING USED AS THE DESIGN BASIS FOR HVAC LOADS WAS DOUBLE 1/4-INCH INSULATED GLASS, LOW E TYPE. SUBSTITUTION OF OTHER GLAZING PRODUCTS MAY RESULT IN INADEQUATE COOLING, AND SHALL BE BROUGHT TO THE ATTENTION OF THE ENGINEER FOR EVALUATION.
- MOUNT OUTDOOR EQUIPMENT INSTALLED AT GRADE ON 4" THICK REINFORCED CONCRETE PADS.
- PROVIDE LOUVERED CONDENSER COIL GUARDS FOR ALL EXTERIOR MOUNTED AC EQUIPMENT.
- FABRICATE NEW HVAC DUCTWORK FROM MILL GALVANIZED STEEL SHEET. MATERIAL GAGES, FABRICATION DETAILS, INSTALLATION AND DUCT SUPPORT SHALL BE IN ACCORDANCE WITH SMACNA DUCT CONSTRUCTION STANDARDS. SEAL ALL JOINTS PER SMACNA STANDARDS.
- THE INDICATED DUCT ROUTING AND SIZES ARE DIAGRAMMATIC. DO NOT FABRICATE FROM THESE DRAWINGS. FIELD VERIFY ROUTING AND AVAILABLE CLEARANCES. WHERE REQUIRED BY FIELD CONDITIONS, DUCTWORK MAY BE RE-SIZED UTILIZING ASHRAE/SMACNA EQUIVALENT SIZES. NOTIFY ENGINEER AND OBTAIN APPROVAL FOR REQUIRED ROUTING AND SIZE CHANGES PRIOR TO BEGINNING FABRICATION.
- SMACNA EQUIVALENT ROUND DUCT OR RECTANGULAR DUCT SIZES MAY BE SUBSTITUTED FOR THE DUCT SIZES INDICATED ON THE PLANS. RECTANGULAR SUBSTITUTIONS SHALL MAINTAIN A MAXIMUM OF 3:1 ASPECT RATIO.
- RIGID EXHAUST AND OUTSIDE AIR DUCTWORK SHALL BE EXTERNALLY INSULATED WITH 2 INCH THICK FLEXIBLE FIBERGLASS, MINIMUM R-6. INSULATION SHALL BE PROVIDED WITH FACTORY APPLIED REINFORCED FOIL VAPOR BARRIER. INSULATION AND VAPOR BARRIER SHALL HAVE A FIRE SMOKE RATING OF 25/50. APPLY INSULATION PER SMACNA STANDARDS.
- RIGID SUPPLY AND RETURN DUCTWORK SHALL BE EXTERNALLY INSULATED WITH 2 INCH THICK FLEXIBLE FIBERGLASS, MINIMUM R-8 INSIDE CONDITIONED BUILDING ENVELOPE. DUCTWORK OUTSIDE BUILDING ENVELOPE SHALL BE PROVIDED WITH 2-1/2 INCH THICK INSULATION, MINIMUM R-8. INSULATION SHALL BE PROVIDED WITH FACTORY APPLIED REINFORCED FOIL VAPOR BARRIER. INSULATION AND VAPOR BARRIER SHALL HAVE A FIRE SMOKE RATING OF 25/50. APPLY INSULATION PER SMACNA STANDARDS.
- PROVIDE DOUBLE THICKNESS TURNING VANES IN ALL MITERED ELBOWS AND TEES.
- INSULATED FLEXIBLE DUCT SHALL BE UL LISTED, CONSTRUCTED OF A CPE INNER LINER, COATED SPRING STEEL WIRE HELIX WITH FIBERGLASS BLANKET, AND VAPOR BARRIER EQUAL TO THERMAFLEX G-1M BY FLEXIBLE TECHNOLOGIES. INSULATION SHALL HAVE A FIRE SMOKE RATING OF 25/50.
- MAXIMUM LENGTH OF FLEXIBLE DUCT SHALL BE FIVE FEET, UNLESS OTHERWISE INDICATED.
- SECURE FLEXIBLE DUCT CONNECTIONS WITH STAINLESS STEEL WORM GEAR CLAMPS AND DUCT TAPE.
- PROVIDE EMERGENCY DRAIN PANS UNDER SUSPENDED A/C UNITS WITH COOLING COILS PER MECHANICAL CODE REQUIREMENTS. PROVIDE FLOAT SWITCHES IN DRAIN PANS FOR UNIT SHUT-DOWN.
- WHERE LAY-IN AIR DEVICES ARE SPECIFIED IN AREAS WITH PLASTER OR GYPSUM BOARD CEILINGS, PROVIDE PLASTER FRAMES.
- SEE REFLECTED CEILING PLAN FOR FINAL LIGHT FIXTURE LOCATIONS AND DIMENSIONS. ADJUST DUCTWORK/DIFFUSER LOCATIONS AS REQUIRED TO SUIT LIGHTING ARRANGEMENT.
- MOTORIZED OUTSIDE AIR DAMPERS SHALL BE GALVANIZED STEEL CONSTRUCTION WITH BRONZE OILITE BEARINGS, LOW LEAKAGE GASKETS, AND 24-VOLT NORMALLY CLOSED, TWO-POSITION, SPRING RETURN ACTUATOR; UNITED ENERTECH MODEL CH-10-R OR APPROVED EQUAL.
- PIPING MATERIALS AND FITTINGS SHALL BE AS FOLLOWS:
REFRIGERANT PIPING SHALL BE TYPE L, HARD DRAWN, COPPER TUBING PER ASTM B88; CLEANED, DEHYDRATED, AND SEALED PER ASTM B280, WITH WROUGHT COPPER SOCKET-JOINT FITTINGS AND SILVER SOLDER.
COIL CONDENSATE DRAIN PIPING SHALL BE SCHEDULE 40 PVC WITH SOLVENT WELD FITTINGS.
- INSULATE INDOOR COIL CONDENSATE DRAIN AND ALL REFRIGERANT SUCTION PIPING WITH 1/2 INCH CLOSED CELL FOAM, "ARMAFLEX" OR EQUAL. PROVIDE UV PROTECTION FOR OUTDOOR INSULATION.
- PITCH CONDENSATE PIPING TO DRAIN A MINIMUM OF 1/8th INCH PER FOOT. PROVIDE P-TRAPS PER A/C UNIT MANUFACTURER INSTALLATION MANUAL.
- ROUTE AC-1 THRU 4 CONDENSATE PIPING TO NEAREST FLOOR DRAIN ON THE MECHANICAL EQUIPMENT PLATFORM. ROUTE AC-5 CONDENSATE TO MOP SINK IN JANITOR ROOM AS INDICATED.
- SUPPORT HORIZONTAL PIPING FROM STRUCTURE WITHIN 1 FOOT OF ELBOWS AND AT THE MAXIMUM INTERVALS SPECIFIED BELOW:
NOMINAL PIPE SIZE DISTANCE BETWEEN SUPPORTS
1/2 TO 1-1/4 INCH 6'-0"
1-1/2 TO 2-1/2 INCH 10'-0"
3 TO 4 INCH 10'-0"
PVC 4'-0"
- SUPPORT VERTICAL PIPING WITH RISER CLAMPS WITHIN 1 FOOT OF ELBOWS AND BENDS.
- INSTALL REFRIGERANT PIPING PER ANSI B31.5 AND LOCAL MECHANICAL CODE. CLEAN, DEHYDRATE, TEST, AND CHARGE LINES PER A/C MANUFACTURER INSTALLATION SPECIFICATIONS. ROUTE PIPING FROM CONDENSING UNITS INSIDE EXTERIOR WALL AND ABOVE CEILING TO AC UNITS.
- ALL PIPING PENETRATIONS THROUGH NON-RATED CONSTRUCTION SHALL BE SLEEVED. SEAL PENETRATIONS THROUGH EXTERIOR WALL WEATHERTIGHT WITH SILICONE SEALANT. PROVIDE ESCUTCHEONS AT EXPOSED INTERIOR LOCATIONS. ALL PIPING PENETRATIONS THROUGH RATED CONSTRUCTION SHALL BE SEALED PER DETAIL. SEE ARCHITECTURAL FOR LOCATIONS OF RATED CONSTRUCTION.
- NEW PROGRAMMABLE THERMOSTATS SHALL BE HONEYWELL VISION PRO 8000/TH8321 SERIES (NO SUBSTITUTIONS) AND SHALL BE PROGRAMMED TO PERFORM THE FOLLOWING SEQUENCES OF OPERATION:
UN-OCCUPIED MODE: SYSTEM SHALL CYCLE TO MAINTAIN SET-POINTS OF 80 DEGREES F COOLING AND 65 DEGREES F HEATING. WHERE MOTORIZED OR MODULATING OUTSIDE AIR DAMPERS ARE PROVIDED, DAMPER SHALL CLOSE.
OCCUPIED MODE: FAN SHALL RUN CONTINUOUSLY TO PROVIDE REQUIRED VENTILATION. SYSTEM COOLING AND HEATING SHALL CYCLE AS REQUIRED TO MAINTAIN SET-POINTS OF 74 DEGREES F COOLING AND 70 DEGREES F HEATING. WHERE MOTORIZED OR MODULATING OUTSIDE AIR DAMPERS ARE PROVIDED, DAMPER SHALL MODULATE TO MINIMUM AIRFLOW POSITION OR ECONOMIZER AS EQUIPPED.
- COMPLETE HVAC SYSTEMS SHALL BE BALANCED BY AN INDEPENDENT, TESTING, ADJUSTING, AND BALANCING (TAB), AABC CERTIFIED CONTRACTOR AS APPLICABLE. TAB CONTRACTOR SHALL BE CONTRACTED BY THE GENERAL CONTRACTOR OR CONSTRUCTION MANAGER AS APPLICABLE AND SHALL REPORT TO THE ENGINEER/ARCHITECT ON BEHALF OF THE OWNER. CONTRACTOR SHALL PROVIDE AABC NATIONAL PERFORMANCE GUARANTEE.
MECHANICAL CONTRACTOR SHALL PROVIDE AND INSTALL ADDITIONAL SHEAVES, DAMPERS, ETC. AS REQUIRED FOR TAB CONTRACTOR TO COMPLETE AND PROVIDE BALANCED SYSTEM PER SPECIFICATIONS.
CONTRACTOR SHALL PROVIDE AND INSTALL NEW FILTERS IN HVAC UNITS AFTER ALL CONSTRUCTION AND DUST WORK IS COMPLETE, JUST PRIOR TO TEST AND BALANCE.
- NEW MECHANICAL EQUIPMENT SHALL NOT BE UTILIZED FOR SPACE CONDITIONING DURING CONSTRUCTION. EQUIPMENT SHALL BE OPERATED ONLY AS REQUIRED TO PROVIDE PROPER START-UP, CHECK-OUT, BALANCE, ETC. IN ORDER TO MEET "SUBSTANTIAL COMPLETION" GOALS AND PROVIDE A COMPLETE WORKING SYSTEM TO TURN OVER TO OWNER.
- MECHANICAL EQUIPMENT SHALL BE AS INDICATED ON THE DRAWINGS. EQUIPMENT OTHER THAN SCHEDULED BRAND AND MODEL MAY BE CONSIDERED PER FULL COMPLIANCE WITH SCHEDULED AND SPECIFICATIONS. MECHANICAL CONTRACTOR SHALL BE FULLY RESPONSIBLE FOR ANY CHANGES AND/OR COSTS ASSOCIATED WITH USING PRODUCTS OTHER THAN THOSE SCHEDULED. HVAC SUPPLIER SHALL HAVE AVAILABLE FACTORY SERVICE TECHNICIANS WITHIN 100 MILE RADIUS OF JOBSITE AND OFFER 24 HR/7 DAY SERVICE, MAINTENANCE AND REPAIRS.
EQUIPMENT SUBMITTED, INCLUDING THE SPECIFIED EQUIPMENT SHALL BE FACTORY DIRECT FROM THE MANUFACTURER'S COMMERCIAL SALES OFFICE, INCLUDING FACTORY DIRECT WARRANTY AND SUPPORT. EQUIPMENT SUBMITTED FOR APPROVAL DURING THE SUBMITTAL PROCESS SHALL BE SUBMITTED COMPLETE WITH MANUFACTURER PERFORMANCE DATA AT THE DESIGN CONDITIONS. SUBMITTAL DATA SHALL BE PROVIDED FROM FACTORY AUTHORIZED REPRESENTATIVES. MANUFACTURER CATALOG STANDARD CUT SHEETS ARE NOT ACCEPTABLE. MANUFACTURERS' DESIGNATED DEALERS AND/OR WHOLESALEERS ARE NOT A SUBSTITUTE FOR FACTORY SERVICE AND SUPPORT.

MECHANICAL LEGEND



Mechanical Compliance Certificate

Project Information
Energy Code: Louisiana Commercial Building Energy Conservation Code 2021
Project Title: 05826 CDPL Baton Rouge LA
Location: Baton Rouge, Louisiana
Climate Zone: Dc
Project Type: New Construction

Construction Site: Make Selection
Owner/Agent: Make Selection
Designer/Contractor: Tim W. Little
301 Industrial Blvd
OLG Engineering
Tulahoma, Tennessee 37388
931.454.9940
tittle@olgengineering.com

Mechanical Systems List

Quantity	Component	Description
HVAC Systems		
1	ACHP-1 (Single Zone):	Split System Heat Pump Heating Mode Capacity = 18 MBtu/h Proposed Efficiency = 7.50 HSPF2, Required Efficiency = 7.50 HSPF2 Cooling Mode Capacity = 18 MBtu/h Proposed Efficiency = 14.30 SEER2, Required Efficiency = 14.30 SEER2 Proposed Part Load Efficiency = 0.00, Required Part Load Efficiency = 0.00 Fan System: FAN-1 (Split Systems - Compliance (Motor nameplate HP and fan efficiency method) - Passes Fan: FAN-1 Supply, Constant Volume, 1400 CFM, 0.3 motor nameplate hp, 1.00 fan energy index, fan exception: Fan array <= 5 total HP or <= 4.1 kW
1	ACHP-4 (Single Zone):	Split System Heat Pump Heating Mode Capacity = 58 MBtu/h Proposed Efficiency = 7.50 HSPF2, Required Efficiency = 7.50 HSPF2 Cooling Mode Capacity = 41 MBtu/h Proposed Efficiency = 15.20 SEER2, Required Efficiency = 14.30 SEER2 Proposed Part Load Efficiency = 0.00, Required Part Load Efficiency = 0.00 Fan System: FAN-1 (Split Systems - Compliance (Motor nameplate HP and fan efficiency method) - Passes Fan: FAN-1 Supply, Constant Volume, 1400 CFM, 0.3 motor nameplate hp, 1.00 fan energy index, fan exception: Fan array <= 5 total HP or <= 4.1 kW
1	ACHP-2 (Single Zone):	Split System Heat Pump Heating Mode Capacity = 22 MBtu/h Proposed Efficiency = 7.50 HSPF2, Required Efficiency = 7.50 HSPF2 Cooling Mode Capacity = 23 MBtu/h Proposed Efficiency = 14.30 SEER2, Required Efficiency = 14.30 SEER2 Proposed Part Load Efficiency = 0.00, Required Part Load Efficiency = 0.00 Fan System: FAN-2 (Split Systems - Compliance (Motor nameplate HP and fan efficiency method) - Passes Fan: FAN-2 Supply, Constant Volume, 1200 CFM, 0.5 motor nameplate hp, 1.00 fan energy index, fan exception: Fan array <= 5 total HP or <= 4.1 kW
Report Title: 05826 CDPL Baton Rouge LA Report Date: May 14, 2026, 02:30 PM (PDT) 1 of 2		

Quantity	Component	Description
1	ACHP-3 (Single Zone):	Split System Heat Pump Heating Mode Capacity = 32 MBtu/h Proposed Efficiency = 7.50 HSPF2, Required Efficiency = 7.50 HSPF2 Cooling Mode Capacity = 35 MBtu/h Proposed Efficiency = 15.20 SEER2, Required Efficiency = 14.30 SEER2 Proposed Part Load Efficiency = 0.00, Required Part Load Efficiency = 0.00 Fan System: FAN-3 (Ductless Splits and Unit Heaters - Compliance (Motor nameplate HP and fan efficiency method) - Passes Fan: FAN-2 Supply, Constant Volume, 1200 CFM, 0.5 motor nameplate hp, 1.00 fan energy index, fan exception: Fan array <= 5 total HP or <= 4.1 kW
1	ACCU-5 (Single Zone):	Cooling: 1 each - Split System (Cooling Equip), Capacity = 18 MBtu/h, Air-Cooled Condenser, No Economizer, Economizer exception: High Efficiency Equipment Proposed Efficiency = 19.50 SEER2, Required Efficiency = 13.40 SEER2 Proposed Part Load Efficiency = 0.00, Required Part Load Efficiency = 0.00 Fan System: FAN-3 (Ductless Splits and Unit Heaters - Compliance (Motor nameplate HP and fan efficiency method) - Passes Fan: FAN-3 Supply, Constant Volume, 450 CFM, 0.3 motor nameplate hp, 1.00 fan energy index, fan exception: Fan array <= 5 total HP or <= 4.1 kW
1	H-1 (Single Zone w/ Heatmeter System):	Heating: 1 each - Unit Heater (Heating Equip), Electric, Capacity = 17 MBtu/h No minimum efficiency requirement applies Fan System: FAN-3 (Ductless Splits and Unit Heaters - Compliance (Motor nameplate HP and fan efficiency method) - Passes Fan: FAN-3 Supply, Constant Volume, 450 CFM, 0.3 motor nameplate hp, 1.00 fan energy index, fan exception: Fan array <= 5 total HP or <= 4.1 kW
2	H-2 & 3 (Single Zone w/ Heatmeter System):	Heating: 1 each - Unit Heater (Heating Equip), Electric, Capacity = 10 MBtu/h No minimum efficiency requirement applies Fan System: FAN-3 (Ductless Splits and Unit Heaters - Compliance (Motor nameplate HP and fan efficiency method) - Passes Fan: FAN-3 Supply, Constant Volume, 450 CFM, 0.3 motor nameplate hp, 1.00 fan energy index, fan exception: Fan array <= 5 total HP or <= 4.1 kW
1	WH-1:	Electric Storage Water Heater, Capacity: 50 gallons No minimum efficiency requirement applies

Mechanical Compliance Statement

Compliance Statement: The proposed mechanical design represented in this document is consistent with the building plans, specifications, and other calculations submitted with the permit application. The proposed mechanical systems have been designed to meet the Louisiana Commercial Building Energy Conservation Code 2021 requirements in COMcheckWeb and to comply with any applicable mandatory requirements listed in the Inspection Checklist.

Name - Title	Signature	Date
--------------	-----------	------