



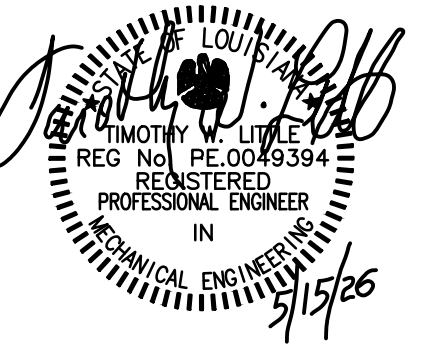
301 Industrial Blvd.
Tulahoma, TN 37388
Office: 931.454.9940
2605 Elm Hill Pk/St C
Nashville, TN 37214
Office: 615.678.6022
olgenengineering.com
OLG Project # 05826



MOLLENKOPF DESIGN GROUP, LLC
49 Music Square W-Suite 600
Nashville, Tennessee 37203
615.296.9146
www.theMDGllc.com

NOTE:
THESE PLANS ARE DIAGRAMMATIC ONLY. REFER TO LOCAL CODES AND ARCHITECTURAL DRAWINGS FOR ACTUAL LAYOUT.
DO NOT SUPPORT PIPING, DUCTWORK, OR UNITS FROM THE BOTTOM FLANGE OF THE PURLINS. ALL ATTACHMENTS SHALL BE MADE IN CENTER WEB OF PURLINS.
NO PIPING OR CONDUITS ARE ALLOWED UNDER THE DOCK SLAB. ALL ROUGH IN WHERE POSSIBLE TO BE ROUTED OVERHEAD.

SPRINKLER INTENT PLAN ONLY. FINAL DESIGN, HEAD LAYOUT, QUANTITIES, LOCATIONS, ETC. SHALL BE DETERMINED BY THE SPRINKLER CONTRACTOR AND SUBMITTED WITH SHOP DRAWINGS TO THE ENGINEER, LOCAL AUTHORITIES, AND OWNER/INSURANCE CARRIER FOR APPROVAL PRIOR TO SPRINKLER INTENT PLAN OF WORK.



Contractor:
SCHWOB
BUILDING COMPANY
1350 LAKESHORE DRIVE
SUITE 160
COPPELL, TX 76006



A New Service Center for:
OLD DOMINION FREIGHT LINE
BATON ROUGE, LA
8601 TOM DRIVE
BATON ROUGE, LA 70815

PERMIT ISSUE 05.15.2026

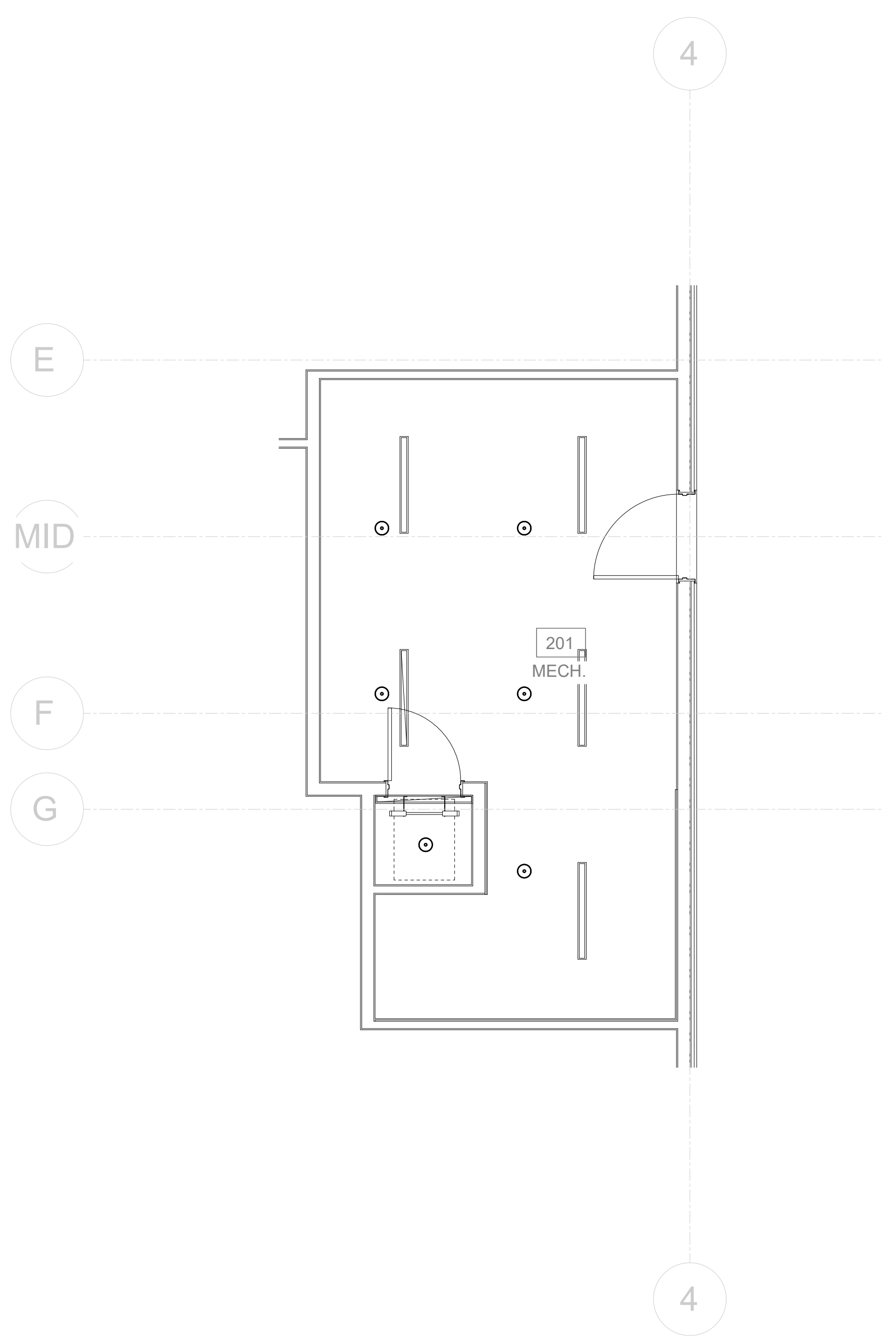
Project No. 25074.00

The Architect hereby reserves its common law copyright and other property rights in these plans, ideas and designs which are not to be reproduced, changed or copied in any form or manner whatsoever, nor are they to be assigned to any third party without first obtaining the express written permission from the Architect. The drawing is not final or to be used for construction until signed by the Architect.

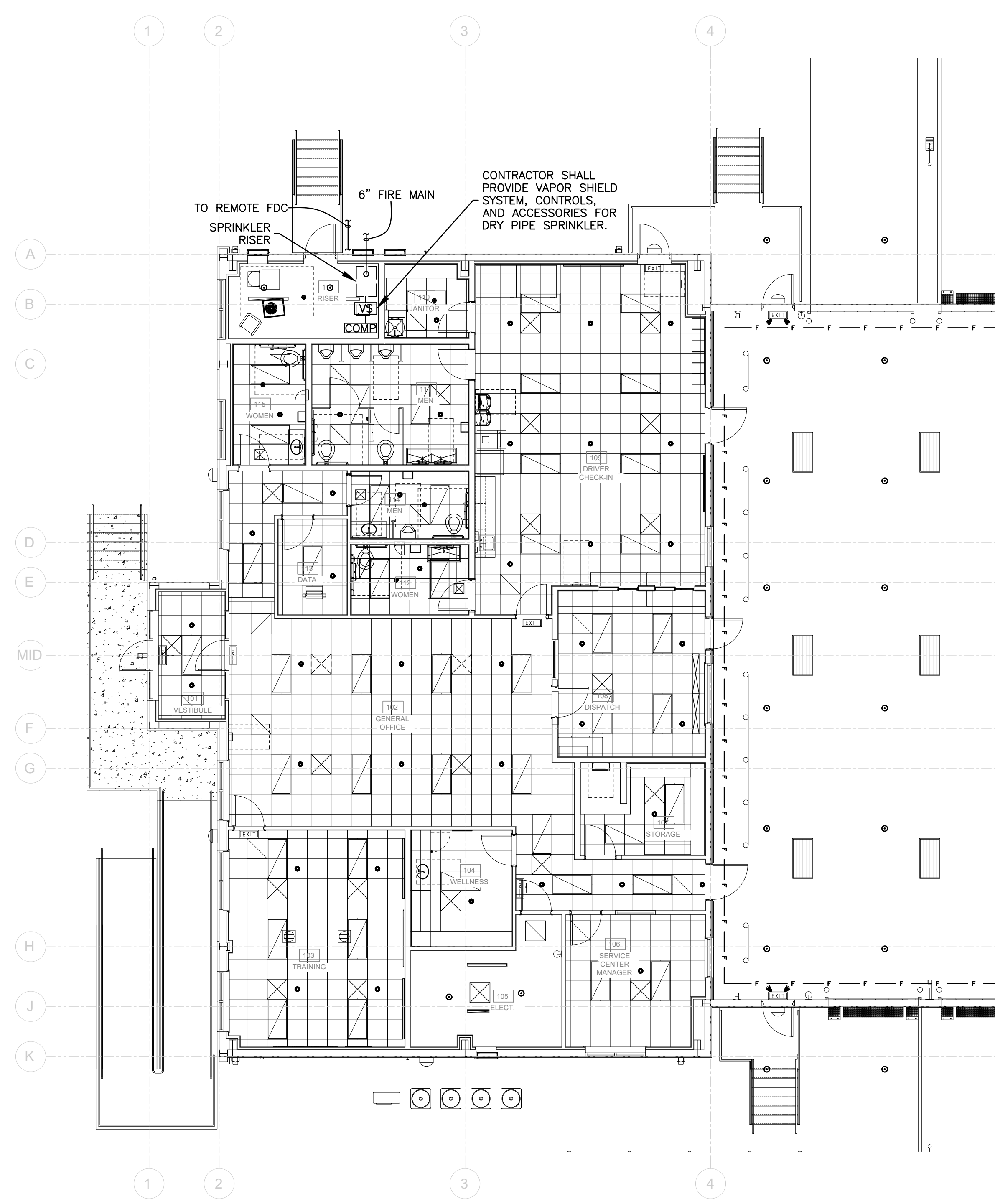
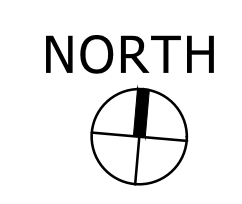
Sheet Name:
OFFICE SPRINKLER INTENT PLAN

Sheet Number:

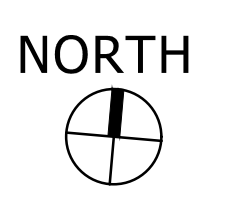
FP1.1



② EQUIPMENT PLATFORM SPRINKLER INTENT PLAN
1/4" = 1'-0"



① OFFICE SPRINKLER INTENT PLAN
1/8" = 1'-0"





301 Industrial Blvd.
Tullahoma, TN 37388
Office: 931.454.9940

2605 Elm Hill Pk/St C
Nashville, TN 37214
Office: 615.678.6022

olgengineering.com
OLG Project # 05826



MOLLENKOPF DESIGN GROUP, LLC
49 Music Square W-Suite 600
Nashville, Tennessee 37203

615.296.9146
www.theMDGllc.com

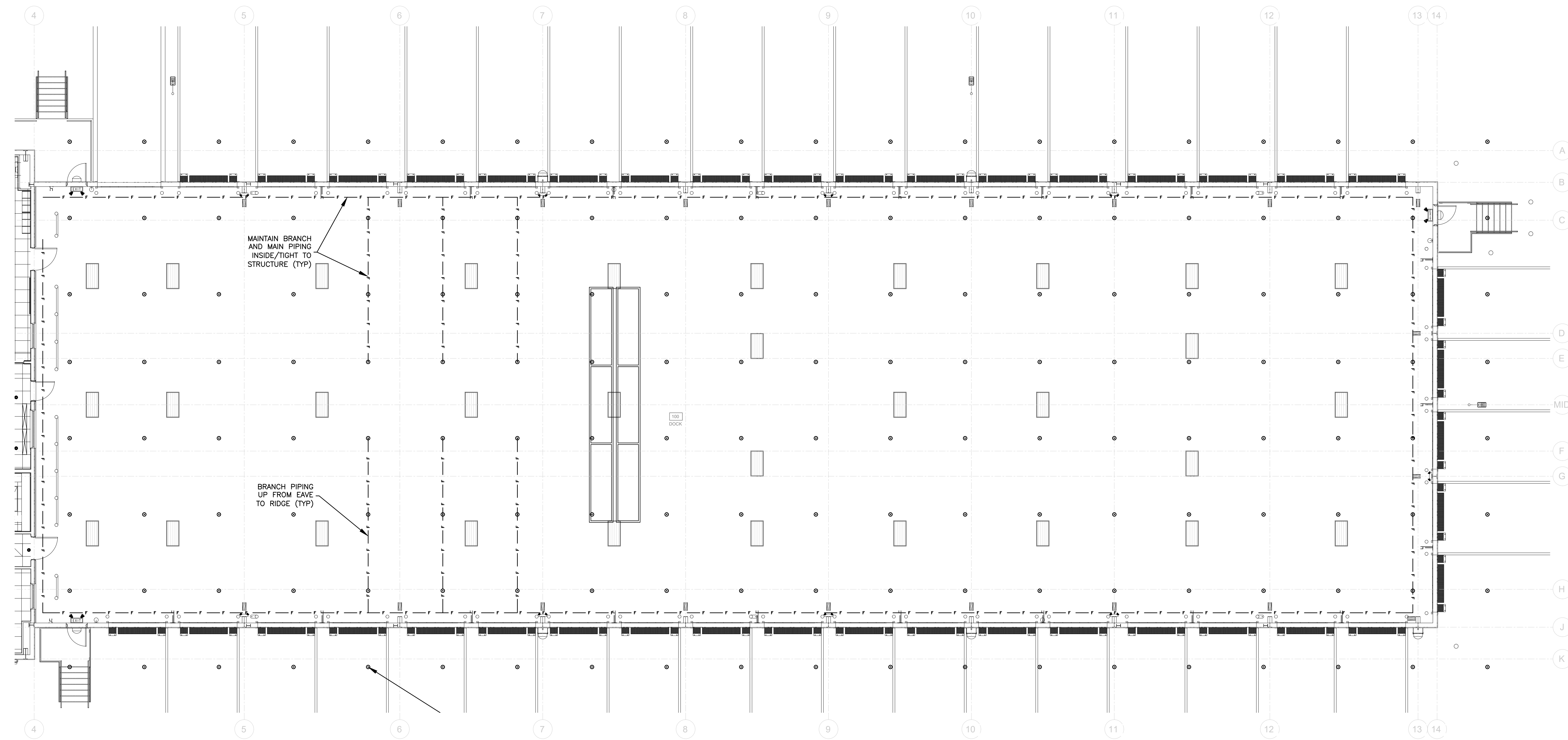


Contractor:
SCHWOB
BUILDING COMPANY
1350 LAKESHORE DRIVE
SUITE 160
COPPELL, TX 76006



A New Service Center for:
OLD DOMINION FREIGHT LINE
BATON ROUGE, LA
8601 TOM DRIVE
BATON ROUGE, LA 70815

PERMIT ISSUE 05.15.2026



1 DOCK SPRINKLER INTENT PLAN
1/8" = 1'-0"



Project No. 25074.00

The Architect hereby reserves its common law copyright and other property rights in these plans, ideas and designs which are not to be reproduced, changed or copied in any form or manner whatsoever, nor are they to be assigned to any third party without first obtaining the express written permission from the Architect. The drawing is not final or to be used for construction until signed by the Architect.

Sheet Name:
DOCK SPRINKLER INTENT PLAN

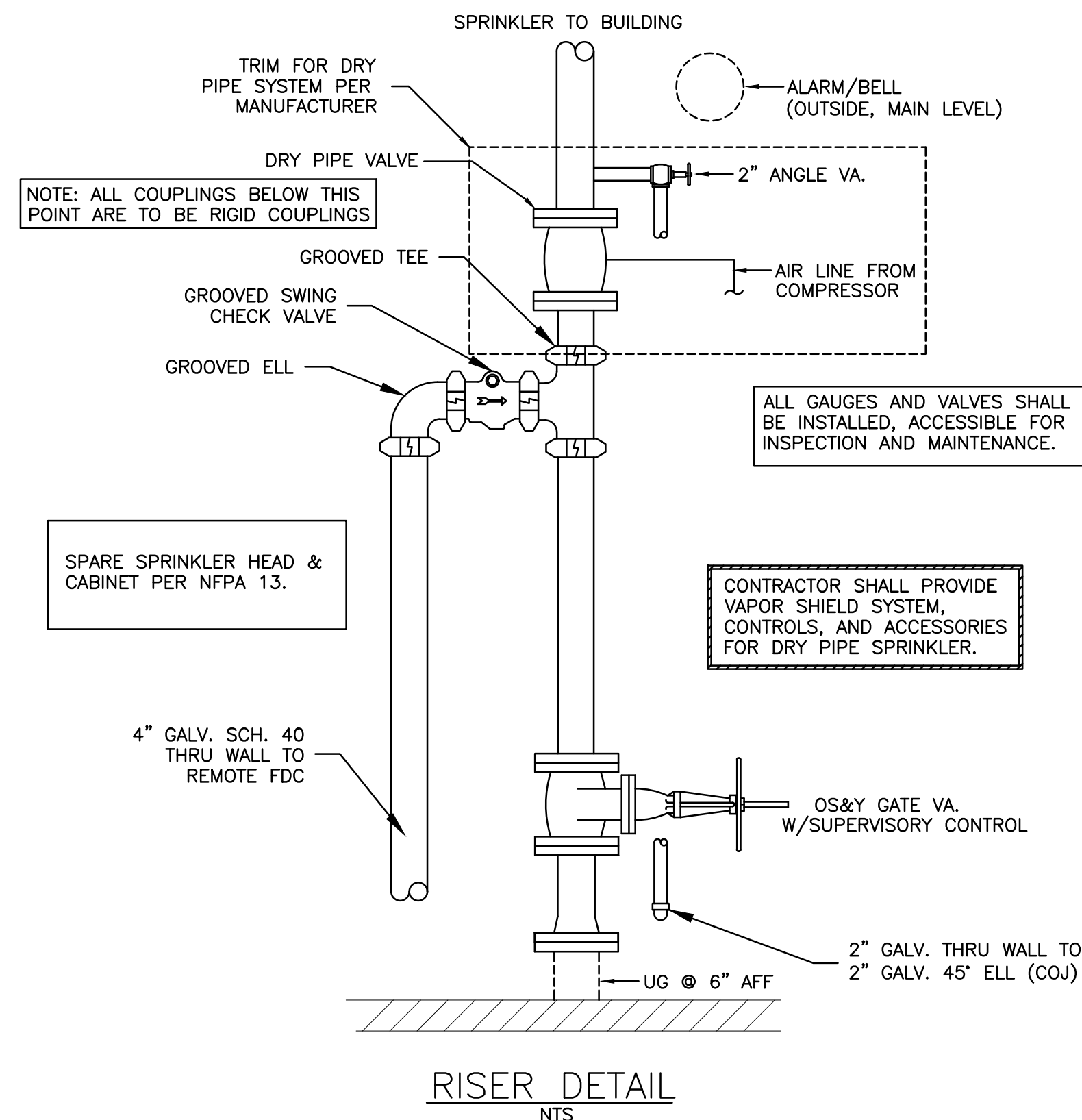
Sheet Number:

FP1.2

SPRINKLER INTENT LEGEND

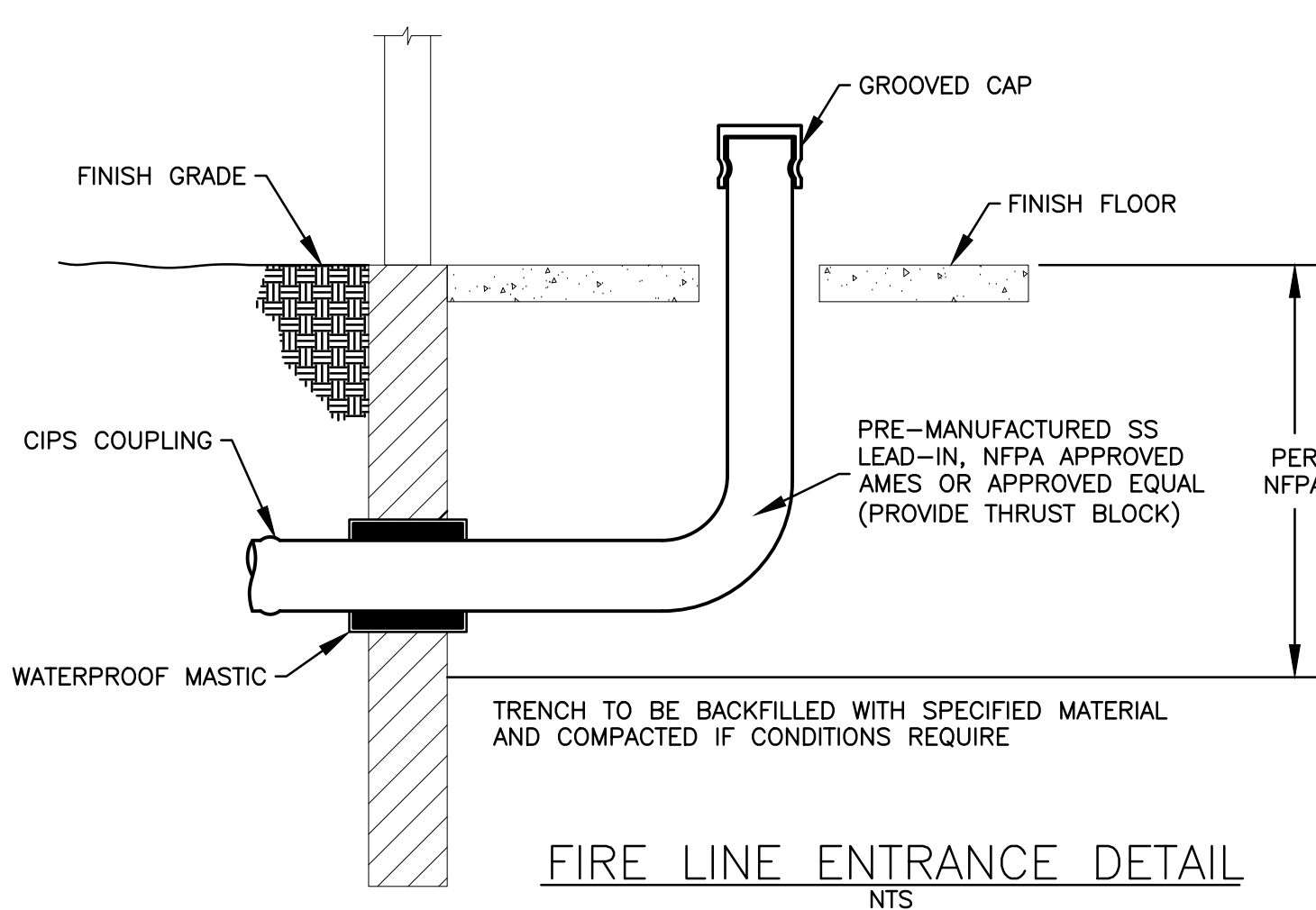
- SPRINKLER PIPING
- FIRE PROTECTION CRITICAL LIMIT
- FIRE PROTECTION REMOTE ZONE
- FIRE PROTECTION HOSE LAY
- RECESSED SPRINKLER HEAD
- ⊕ CONCEALED SPRINKLER HEAD
- ⊙ UPRIGHT SPRINKLER HEAD
- ⊕ CURTAIN SPRINKLER HEAD
- PENDANT SPRINKLER HEAD
- ▽ SIDEWALL SPRINKLER HEAD
- ▽ SIDEWALL CURTAIN HEAD
- ▽ EXTERIOR DRY SPRINKLER HEAD
- ▽ OS & Y VALVE WITH TAMPER SWITCH
- ▽ FLOW SWITCH
- ▽ BFP BACKFLOW PREVENTER
- ▽ FDC FIRE DEPARTMENT CONNECTION
- ▽ GPM GALLONS PER MINUTE
- ▽ PIV POST INDICATOR VALVE
- ▽ PSIG POUNDS PER SQUARE INCH - GAUGE

NOTE:
ALL OF THE SYMBOLS AND ABBREVIATIONS INCLUDED ON THIS SHEET MAY OR MAY NOT BE USED IN THIS SET OF DRAWINGS.

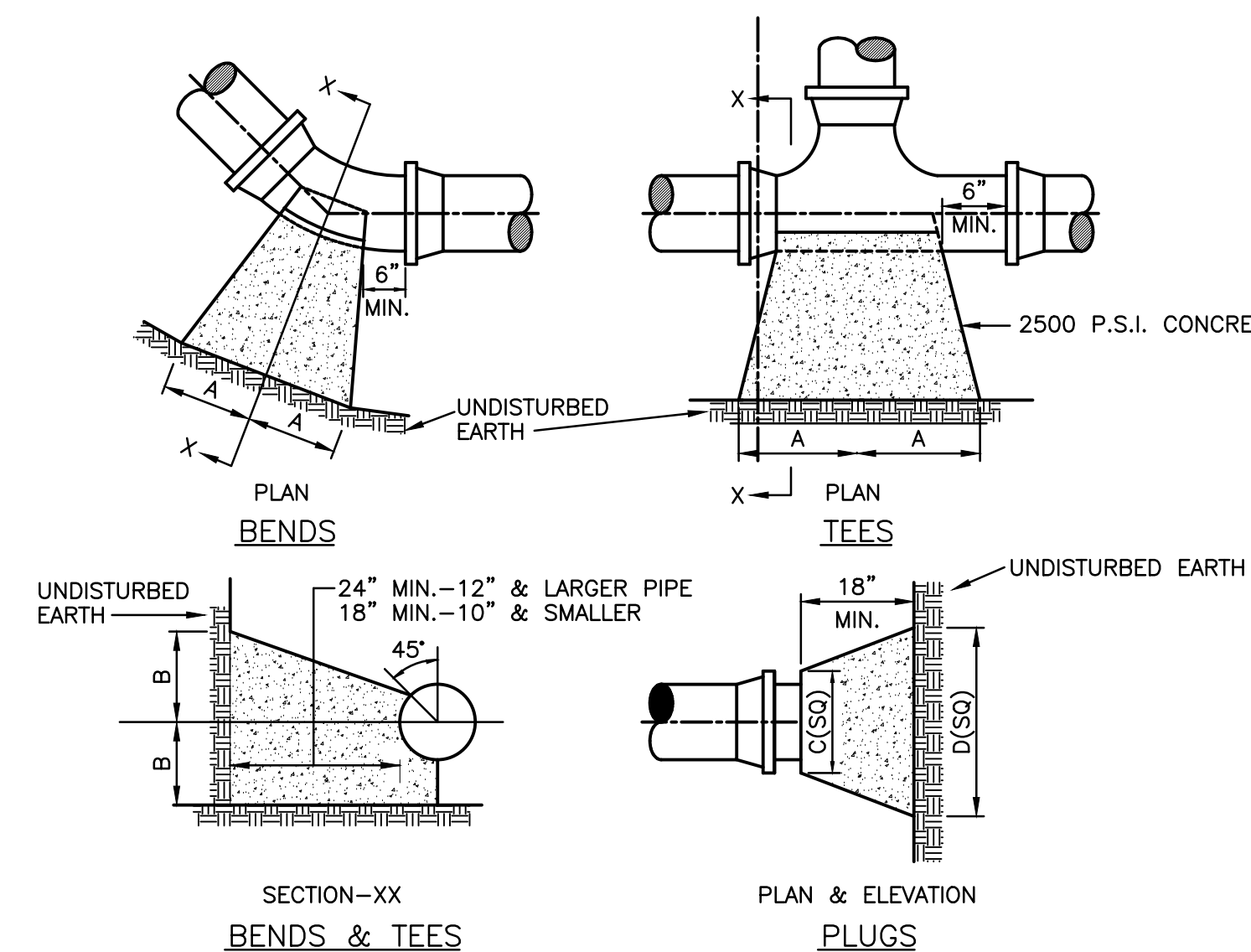


SPRINKLER INTENT NOTES

- SPRINKLER CONTRACTOR SHALL FURNISH AND INSTALL ALL ITEMS NECESSARY TO PROVIDE A COMPLETE AND ACCEPTABLE SPRINKLER SYSTEM COMPLIANT WITH ALL APPLICABLE STATE AND LOCAL CODES.
- SPRINKLER PIPING SHALL BE COORDINATED WITH DUCTWORK, CONDUIT, LIGHTS, PLUMBING, STRUCTURE AND OTHER RELATED TRADES TO INSURE ALL INTERFERENCES HAVE BEEN RESOLVED PRIOR TO INSTALLATION.
- SPRINKLER SYSTEM SHALL BE HYDRAULICALLY CALCULATED PER NFPA 13 AND ALL APPLICABLE STATE AND LOCAL CODES.
- ALL SPRINKLER HEADS SHALL BE LOCATED SYMMETRICALLY IN ROOMS AND CENTERED IN CEILING TILES.
- ALL SHUT-OFF/CONTROL VALVES MUST BE SUPERVISED PER NFPA.
- ABOVEGROUND SPRINKLER SYSTEM PIPING SHALL BE BLACK PRIMED STEEL FOR WET SYSTEMS AND GALVANIZED FOR DRY SYSTEMS PER NFPA 13. EXPOSED PIPING SHALL BE PAINTED WITH FINISH COAT AS SELECTED BY ARCHITECT. INDIVIDUAL BRANCH PIPING TO HEADS MAY BE RIGID STEEL PER ABOVE OR BRAIDED FLEXIBLE STAINLESS STEEL DROP COMPLIANT WITH NFPA 13 WHERE APPROVED BY LOCAL AUTHORITIES.
- REFER TO THE SITE FIRE PROTECTION LAYOUT FOR LOCATIONS OF CITY WATER MAIN, NEW FIRE MAIN, FIRE HYDRANT, AND HYDRAULIC DATA, ETC..
- SHOP DRAWINGS AND HYDRAULIC CALCULATIONS SHALL BE SUBMITTED TO OWNER'S INSURANCE UNDERWRITER AND AUTHORITIES HAVING JURISDICTION FOR APPROVAL PRIOR TO COMMENCING WORK. PROVIDE PROOF OF APPROVAL TO ENGINEER'S OFFICE.
- SPACES SUCH AS CONFERENCE ROOMS, OFFICES, CORRIDORS, ETC., SHALL BE HYDRAULICALLY CALCULATED TO PRODUCE 0.10 GPM OVER THE MOST REMOTE 1,950 SQ. FT (1,500 FOR WET SYSTEMS). HEAD COVERAGE SHALL BE 225 SQ. FT./HEAD MAXIMUM. 100 GPM HOSE DEMAND WITH 60 MINUTE DURATION.
- DOCK AREA SHALL BE HYDRAULICALLY CALCULATED TO ORDINARY GROUP 2 REQUIREMENTS TO DELIVER 0.2 GPM OVER THE MOST REMOTE 1,950 SQ. FT. HEAD COVERAGE SHALL BE 130 SQ. FT. MAXIMUM. 250 GPM HOSE DEMAND WITH 60-90 MINUTE DURATION.
- PROVIDE SEISMIC RESTRAINTS AND CONNECTIONS (IN ACCORDANCE WITH IBC 1613) AND REQUIRED CLEARANCES AROUND PIPING AT PENETRATIONS FOR FIRE PROTECTION PIPING. SEE STRUCTURAL FOR SEISMIC DESIGN DATA.
- UNDERGROUND FIRE MAINS SHALL BE INSTALLED WITH A MINIMUM DEPTH OF BURY OF 3 FEET.
- SPRINKLER PIPING FROM THE "POINT OF SERVICE" INCLUDING UNDERGROUND PIPING SHALL BE INSTALLED BY A REGISTERED SPRINKLER CONTRACTOR AND SHALL BE ONE SPRINKLER CONTRACTOR. SITE UTILITIES CONSTRUCTION SHALL NOT BE PROVIDED BY A SEPARATE LICENSED SPRINKLER CONTRACTOR OR SITE UTILITIES CONTRACTOR.
- ALL SYSTEM GAUGES AND VALVES MUST BE ACCESSIBLE FOR INSPECTION AND MAINTENANCE IN ACCORDANCE WITH NFPA 13.8.1.2.
- CONTRACTOR SHALL PROVIDE SIGNAGE AND LABELS FOR ALL SPRINKLER COMPONENTS (VALVES, PIPING, TAMPER SWITCHES, FLOW ALARMS, ETC.) PER NFPA 13.3-8.3 AND LOCAL REQUIREMENTS.
- CONTRACTOR SHALL ROUTE ALL PIPING CONCEALED INSIDE WALLS, ABOVE CEILING, INSIDE SOFFITS, ETC. WHERE AVAILABLE. ALL EXPOSED PIPING SHALL BE COORDINATED WITH AND LOCATION APPROVED BY ARCHITECT PRIOR TO FABRICATION AND ROUGH-IN. CONTRACTOR SHALL REROUTE AND RELOCATE PIPING TO LESS CONSPICUOUS LOCATIONS AS REQUIRED.
- ALL PIPING PENETRATIONS THROUGH NON-RATED CONSTRUCTION SHALL BE SLEEVED. SEAL PENETRATIONS THROUGH EXTERIOR WALL WEATHERTIGHT WITH SILICONE SEALANT. PROVIDE ESCUTCHEONS AT EXPOSED INTERIOR LOCATIONS. ALL PIPING PENETRATIONS THROUGH RATED CONSTRUCTION SHALL BE SEALED PER DETAILS AS INDICATED ON DRAWING UL DETAIL DRAWINGS ACCORDINGLY. SEE PLANS FOR LOCATIONS OF RATED CONSTRUCT.



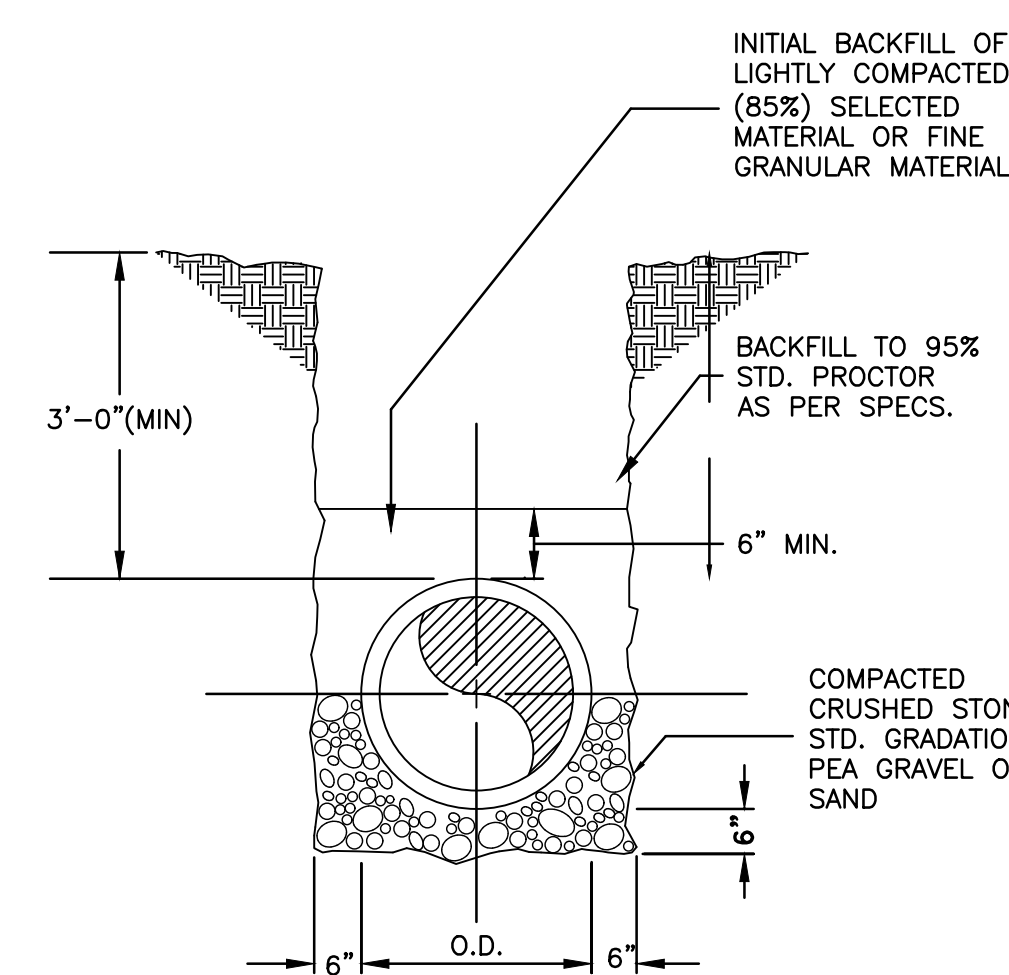
FIRE LINE ENTRANCE DETAIL
NTS



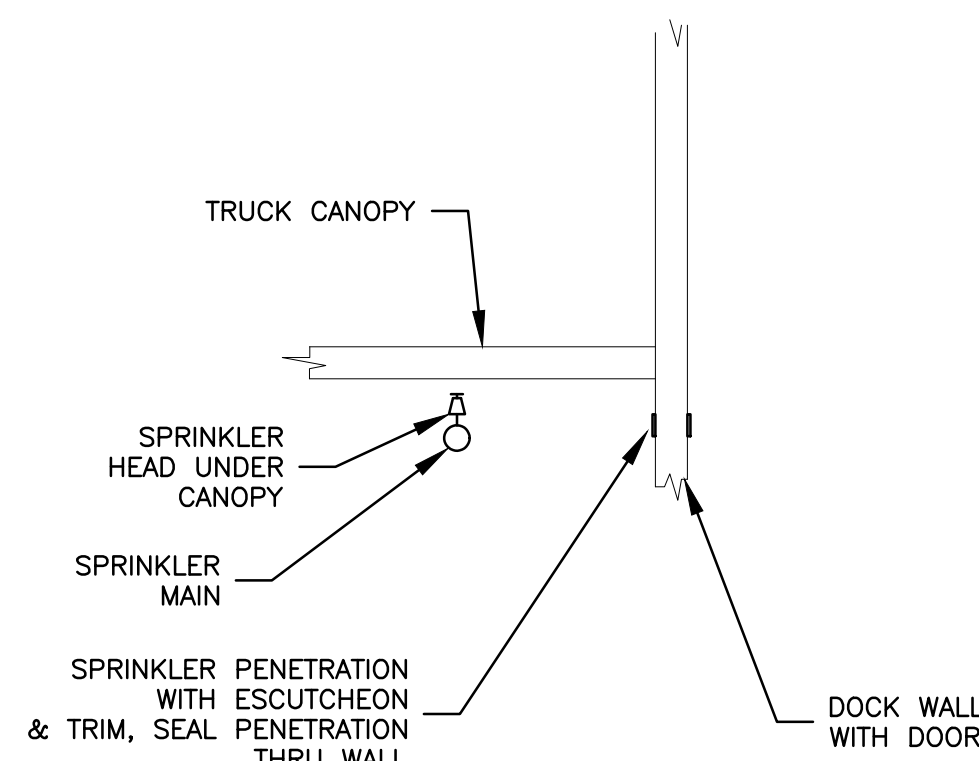
| PIPE SIZE | 11.25' BEND | | 22.5' BEND | | 45' BEND | | 90' BEND | | TEE | | PLUG | |
|-----------|-------------|----|------------|----|----------|----|----------|----|-----|----|------|----|
| | A | B | A | B | A | B | A | B | A | B | A | B |
| 6 | 9 | 10 | 12 | 10 | 16 | 10 | 20 | 10 | 10 | 12 | 10 | 21 |
| 8 | 12 | 13 | 16 | 13 | 22 | 13 | 26 | 13 | 13 | 16 | 12 | 29 |
| 12 | 16 | 21 | 22 | 21 | 28 | 21 | 32 | 21 | 18 | 24 | 16 | 41 |
| 16 | 21 | 27 | 30 | 27 | 36 | 27 | 44 | 27 | 24 | 32 | 20 | 54 |

NOTE: ALL DIMENSIONS ARE IN INCHES

THRUST BLOCK DETAIL
NTS.



UTILITY TRENCH DETAIL
NTS



DOCK CANOPY SPRINKLER PENETRATION
NTS