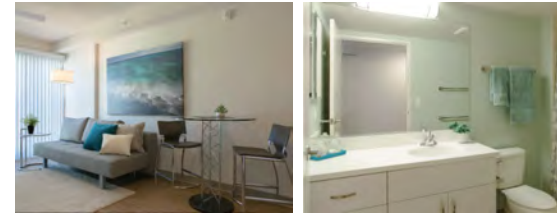




**HONOLULU METRO KAKAAKO**



# The Flats at Pu'unui

**440 KEAWE ST HONOLULU HI 96813**

## RENT

\$1,225 - \$1,425/MO	\$1,495 - \$1,925/MO
STUDIO 1 BATH	1 BED 1 BED + DEN 1 BATH
\$2,025 - \$2,225/MO	\$2,345 - 2,525/MO
2 BED 1 BATH	3 BED 1 BATH

## UTILITIES

- Water and sewer included in rent
- Tenants responsible for electricity, cable, internet, telephone, and parking

## APARTMENT FEATURES

Modern studio, one-bedroom, two-bedroom, and three-bedroom units, energy-efficient appliances in a fully equipped kitchen, laundry room, air conditioning, high-speed internet and cable-ready

## PROPERTY AMENITIES

- Secured access entry
- Rooftop lounge area with panoramic views
- Laundry facility
- Pet-friendly environment
- On-site parking available (additional fee)

## SERVICES NEARBY

5-10 minute walk to Flair Steakhouse, Down to Earth, UPS Store, and Blade and Timber, H-Mart, Earl's, and SALT (Arvo, Pitch Sports Bar, Moku Kitchen, Starbucks, and more).

## FOR APPLICATION & INFORMATION

**(808) 888-0228**

**KHL@locationshawaii.com**



**PROPERTY MANAGEMENT DIVISION**  
677 Ala Moana Blvd. Honolulu, HI 96813  
(808) 738-3100 | RB-17095

✉ [AffordableRentals@locationshawaii.com](mailto:AffordableRentals@locationshawaii.com)  
🌐 [AffordableOahu.com](http://AffordableOahu.com)

# The Flats at Pu'unui

**440 KEAWE ST HONOLULU HI 96813**

## TENANT ELIGIBILITY REQUIREMENTS

- Head of household must be at least 18 years of age or emancipated minor
- Must occupy unit as primary residence
- Credit score of 650 or higher
- Satisfactory landlord history
- Minimum income: 2.5 times the rental amount in gross income
- Must meet criminal background criteria



## RENT SCHEDULE

APARTMENT SIZE	RENT (80% AMI)	RENT (100% AMI)
STUDIO	\$1,225/MO	\$1,425/MO
1 BEDROOM	\$1,495/MO	\$1,645/MO
1 BEDROOM + DEN	\$1,745/MO	\$1,925/MO
2 BEDROOM	\$2,025/MO	\$2,225/MO
3 BEDROOM	\$2,345/MO	\$2,525/MO

## INCOME LIMITS

FAMILY SIZE	80% AMI	100% AMI
1 PERSON	\$86,240	\$107,800
2 PERSONS	\$98,560	\$123,200
3 PERSONS	\$110,880	\$138,600
4 PERSONS	\$123,200	\$154,000

## INTERESTED IN RENTING?

1. Visit [www.locationsrentals.com](http://www.locationsrentals.com) (or [loca-hi.com/rent440](http://loca-hi.com/rent440)) and select an available unit.
2. Complete the online Rental Application and pay the \$30 non-refundable fee per adult.
3. Once your background and credit check (650+ score) are approved, a team member will reach out with further information on how to submit income verification documents.

## HHFDC PROGRAM

Hawaii Housing Finance and Development Corporation (HHFDC) is authorized under Chapter 201H, Hawaii Revised Statutes (HRS) to develop or assist in the development of certain housing projects. Applicants must meet specific qualifications to be considered.

**NOHEALANI HOPII**  
RESIDENT MANAGER  
[nohealani.hoopii@locationshawaii.com](mailto:nohealani.hoopii@locationshawaii.com)

**GIOVANNI BUMANGLAG**  
ADMINISTRATIVE ASSISTANT  
[giovanni.bumanglag@locationshawaii.com](mailto:giovanni.bumanglag@locationshawaii.com)

This brochure was updated on 5/27/2026 and the information contained herein was accurate as of this date.