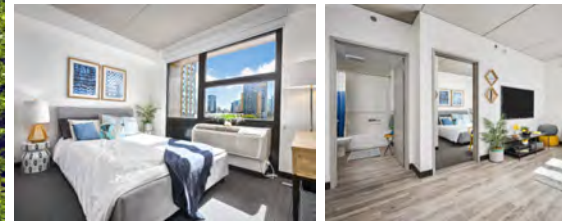




HONOLULU METRO KAKA'AKO



Keauhou Lane

502 KEAWE ST HONOLULU HI 96813

RENT

\$1,400 - \$1,525/MO	\$1,900 - \$1,975/MO
STUDIO 1 BATH	1 BED 1 BATH
\$2,400 - \$2,525/MO	
2 BED 1 BATH	

APARTMENT FEATURES

Studio, one-bedroom and two-bedroom apartments; pet-friendly; air conditioning; modern finishes including quartz countertops, Energy Star-rated stainless steel appliances, dishwashers, and high-efficiency LED lighting.

PROPERTY AMENITIES

- Secured access entry
- Resident lounge and outdoor BBQ deck
- Bike storage room
- Laundry facilities
- Onsite-parking (additional fee)

UTILITIES

- Water and sewer included in rent
- Tenants responsible for electricity, cable, internet, telephone, and parking

SERVICES NEARBY

5-10 minute walk to Flair Steakhouse, Down to Earth, UPS Store, and Blade and Timber, H-Mart, Earl's, and SALT (Arvo, Pitch Sports Bar, Moku Kitchen, Starbucks, and more).

FOR APPLICATION & INFORMATION

(808) 888-0228

KHL@locationshawaii.com



PROPERTY MANAGEMENT DIVISION
677 Ala Moana Blvd., Honolulu, HI 96813
(808) 738-3100 | RB-17095

- ✉ AffordableRentals@locationshawaii.com
- 🌐 AffordableOahu.com

Keauhou Lane

502 KEAWE ST HONOLULU HI 96813

TENANT ELIGIBILITY REQUIREMENTS

- Head of household must be at least 18 years of age or emancipated minor
- Must occupy unit as primary residence
- Must not exceed 80% or 100% of the Honolulu median income
- Credit score of 650 or higher
- Satisfactory landlord history
- Minimum income: 2.5 times the rental amount in gross income
- Must meet criminal background criteria



RENT SCHEDULE

APARTMENT SIZE	RENT (80% AMI)	RENT (100% AMI)
STUDIO	\$1,400 - \$1,500/MO	\$1,475 - \$1,525/MO
1 BEDROOM	\$1,900/MO	\$1,975/MO
2 BEDROOM	\$2,400 - 2,500/MO	\$2,475 - \$2,525/MO

INCOME LIMITS

FAMILY SIZE	80% AMI	100% AMI
1 PERSON	\$86,240	\$107,800
2 PERSONS	\$98,560	\$123,200
3 PERSONS	\$110,880	\$138,600

APPLICATION PROCESS

The compliance interview is the first step in qualifying.

Required income and asset documentation is due at the interview for management to request third-party verification for all sources.

Applicants must provide a completed application packet in its entirety to be considered. Please be advised that processing may take several weeks.

Please inquire directly with our office for an application and any related questions to the property.

Applications are also available online at AffordableOahu.com

HHFDC PROGRAM

Hawaii Housing Finance and Development Corporation (HHFDC) is authorized under Chapter 201H, Hawaii Revised Statutes (HRS) to develop or assist in the development of certain housing projects. Applicants must meet specific qualifications to be considered.

NOHEALANI HOPII
RESIDENT MANAGER
nohealani.hoopii@locationshawaii.com

SALLY MEJIA
ADMINISTRATIVE ASSISTANT
sally.mejia@locationshawaii.com

This brochure was updated on 5/27/2026 and the information contained herein was accurate as of this date.