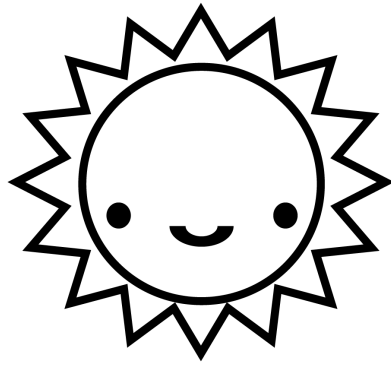
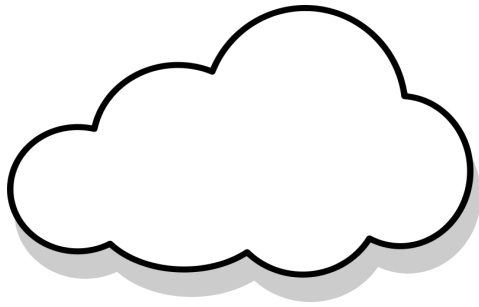


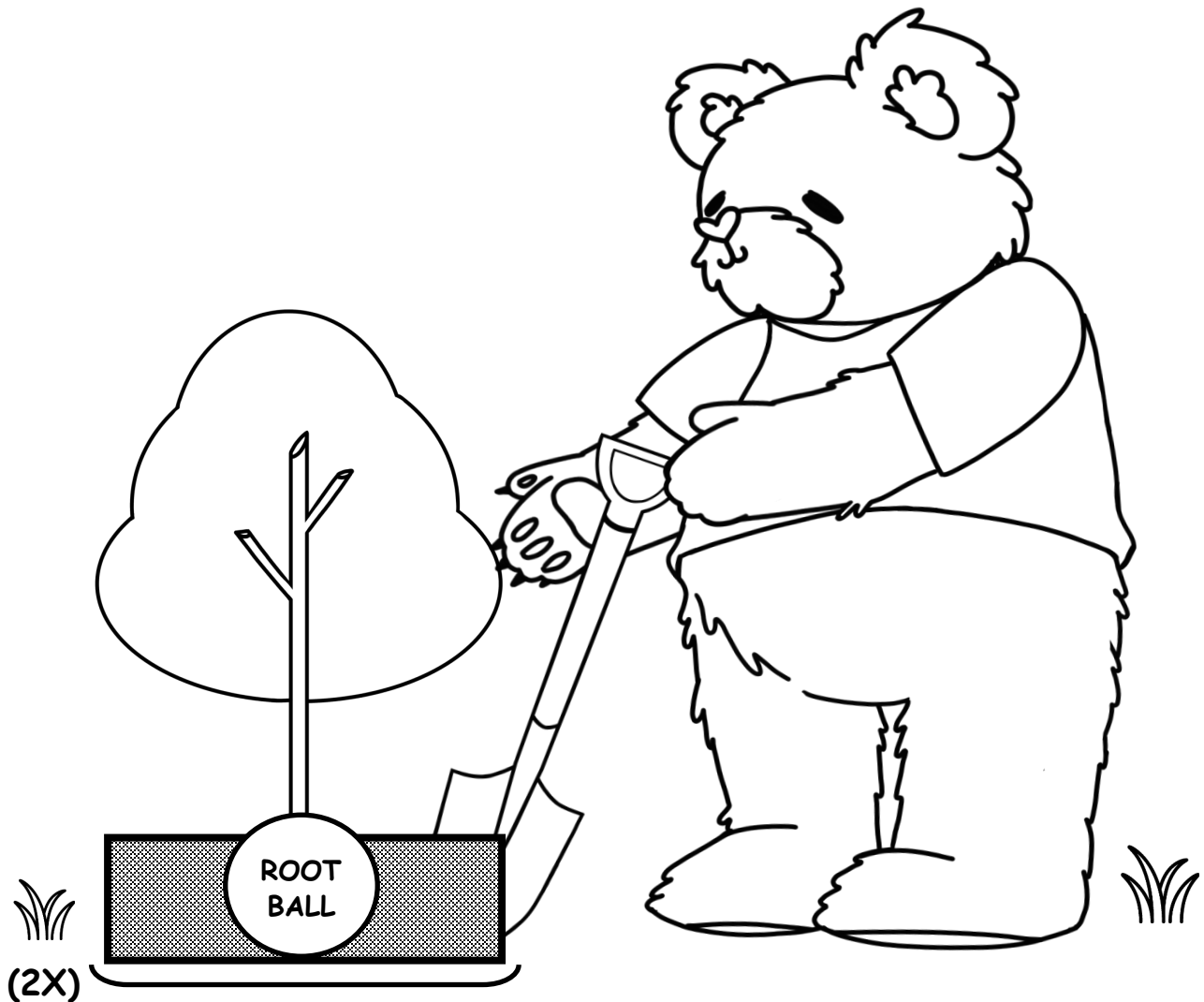
# ARBOR BEAR PLANTS A TREE

COLORING AND ACTIVITY BOOK

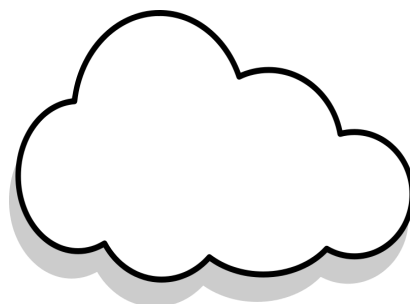
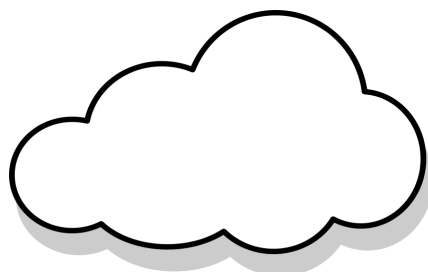
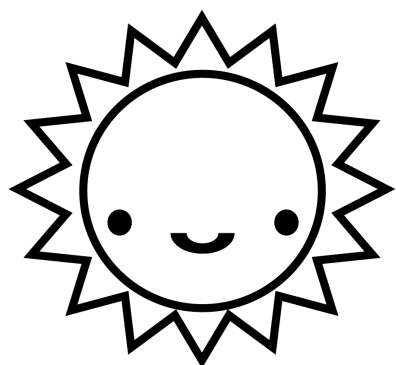




WHAT A BEAUTIFUL DAY  
TO PLANT A TREE.



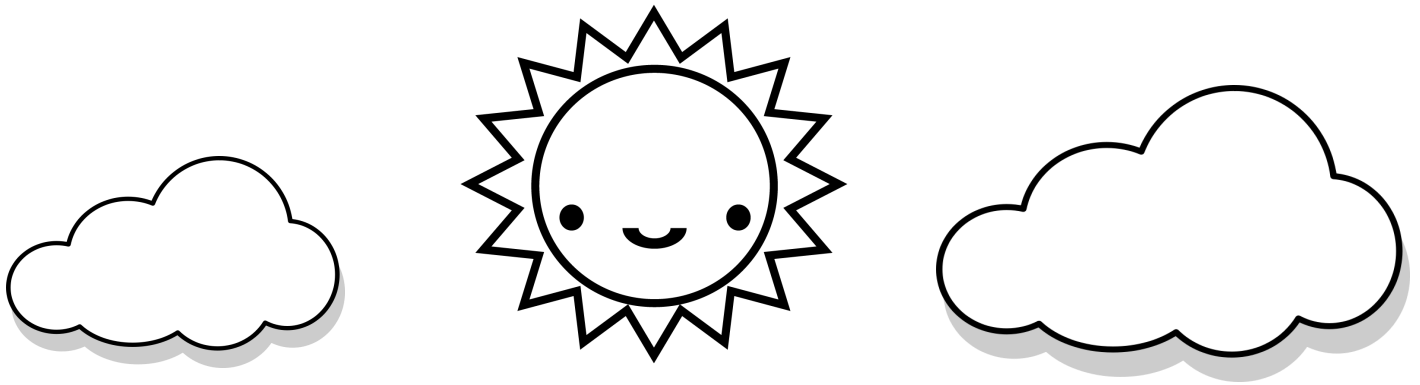
ARBOR BEAR WILL FIRST DIG A HOLE. THIS HOLE  
SHOULD BE TWICE AS WIDE AS THE ROOT BALL OF THE  
TREE AND ALMOST AS DEEP AS THE ROOT BALL.



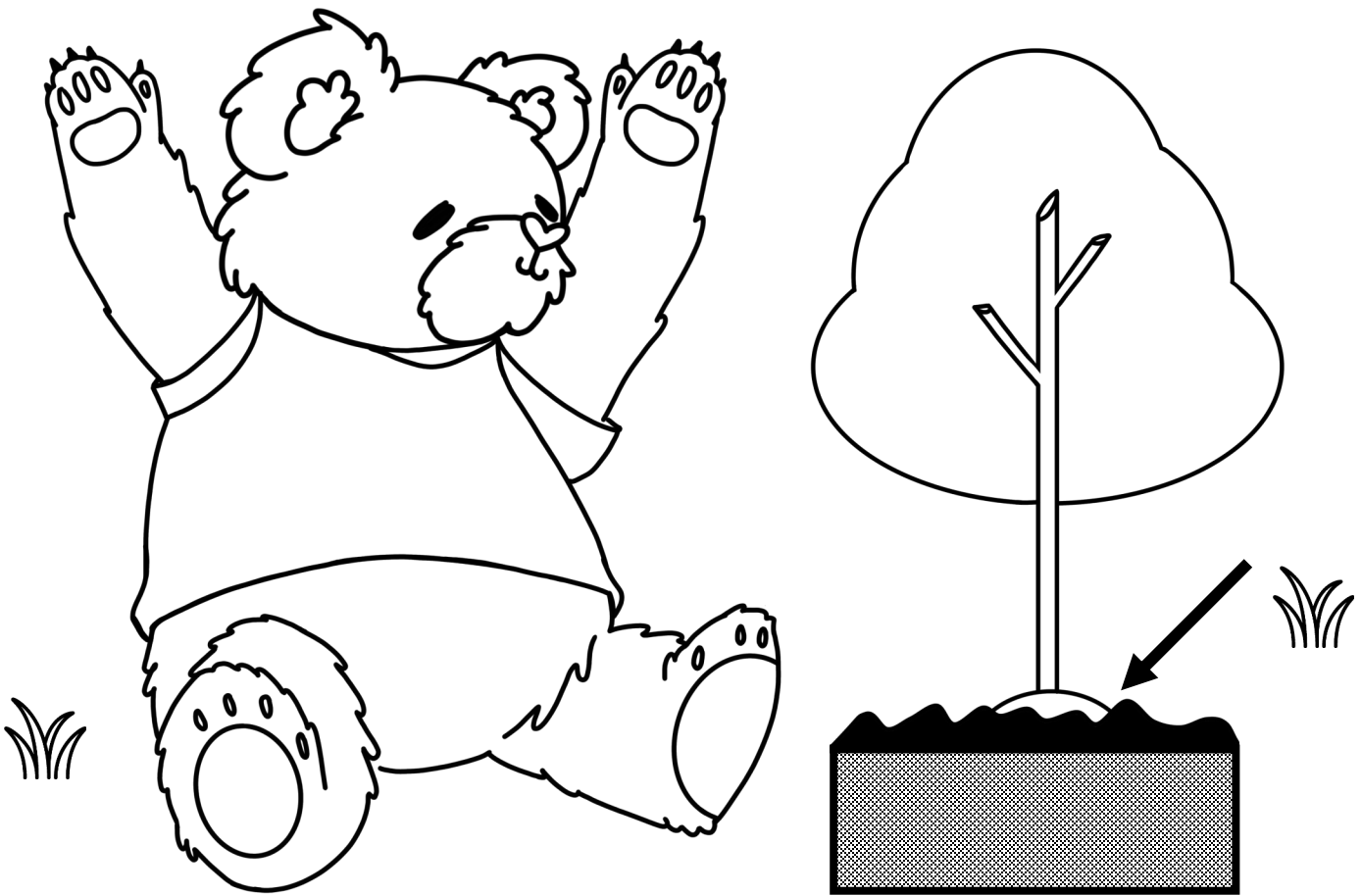
**DON'T FORGET TO NAME AND  
LOVE YOUR NEW TREE.**



**ARBOR BEAR WILL WATER HIS TREE UNTIL WATER  
PUDDLES ON TOP. THEN HE WILL DO IT AGAIN 3  
TIMES PER WEEK FOR THE FIRST MONTH.**



EVERYDAY IS A GOOD DAY TO  
PLANT A TREE.



ARBOR BEAR WILL THEN PLACE THE TREE IN THE  
CENTER OF THE HOLE AND FILL IT WITH SOIL UNTIL  
THE SOIL IS SLIGHTLY ABOVE GROUND LEVEL.