



Mondale
& Associates

Radiant Pro Panels Catalog

Radiant  **Pro**

Radiant Pro Panels (Stand Alone Panels-Taco)

Radiant Pro Panels are customized panels designed for your specific applications. The Stand-Alone Panels are designed to be the complete boiler piping solution for your boiler, whether your boiler has a circulator installed in it or not. The M1Zn panels are for boilers that do NOT have circulators as they provide the boiler loop circulator; the CM1Zn panels are for boilers that have circulators pre-installed as is the case with most Combination boilers. These Stand Alone Panels include the circulators, controls, air eliminators, expansion tanks, relief valves and push type fittings to connect to the rest of the heating system. Everything is piped, wired and pressure tested. These systems are designed to install and fill easily and quickly.



RPP-M1Zn-T-0015E-0015E-RP



RPP-CM1Zn-T-XXXX-VT2218-RP

Panel	Primary Circuits - 1 Zone (Stand Alone Panels)
RPP-M1Zn-T-0015E-0015E-RP	Radiant Pro Panel, Taco, Primary/Secondary, 1 Zone, Pre-Wired, Boiler Pump - 0015E3-F4; System Circulator - 0015E3-2F4
RPP-M1Zn-T-0015E-VT2218-RP	Radiant Pro Panel, Taco, Primary/Secondary, 1 Zone, Pre-Wired, Boiler Pump - 0015E3-F4; System Circulator - VT2218
RPP-M1Zn-T-0011-0015E-RP	Radiant Pro Panel, Taco, Primary/Secondary, 1 Zone, Pre-Wired, Boiler Pump - 0011-F4 ; System Pump - 0015E3-2F4
RPP-M1Zn-T-0015-0015-RP	Radiant Pro Panel, Taco, Primary/Secondary, 1 Zone, Pre-Wired, Boiler Pump - 0015-MSF3-IFC; System Circulator - 0015-MSF3-IFC
RPP-M1Zn-T-0011-0011-RP	Radiant Pro Panel, Taco, Primary/Secondary, 1 Zone, Pre-Wired, Boiler Pump - 0011-F4; System Circulator - 0011-F4
RPP-CM1Zn-T-XXXX-0015E-RP	Radiant Pro Panel, For Use with Boilers with Boiler Circulator, Taco, Primary/Secondary, 1 Zone, Pre-Wired, System Pump - 0015E3-2F4
RPP-CM1Zn-T-XXXX-VT2218-RP	Radiant Pro Panel, For Use with Boilers with Boiler Circulator, Taco, Primary/Secondary, 1 Zone, Pre-Wired, System Pump - VT2218
RPP-CM1Zn-T-XXXX-0015-RP	Radiant Pro Panel, For Use with Boilers with Boiler Circulator, Taco, Primary/Secondary, 1 Zone, Pre-Wired, System Pump - 0015-MSF3-IFC
RPP-CM1Zn-T-XXXX-0011-RP	Radiant Pro Panel, For Use with Boilers with Boiler Circulator, Taco, Primary/Secondary, 1 Zone, Pre-Wired, System Pump - 0011-F4

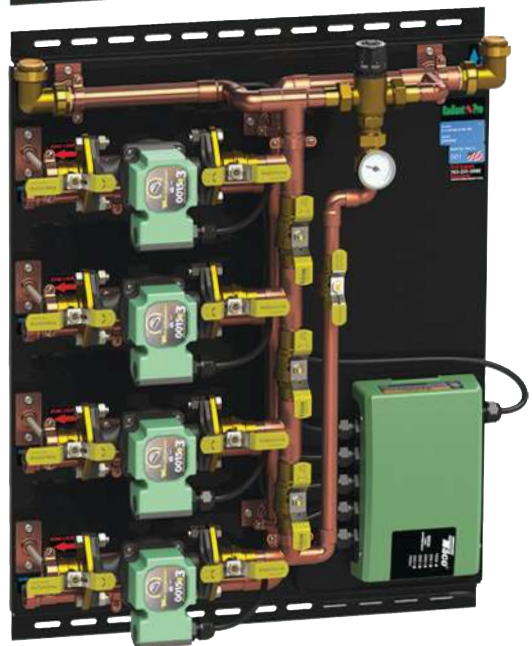
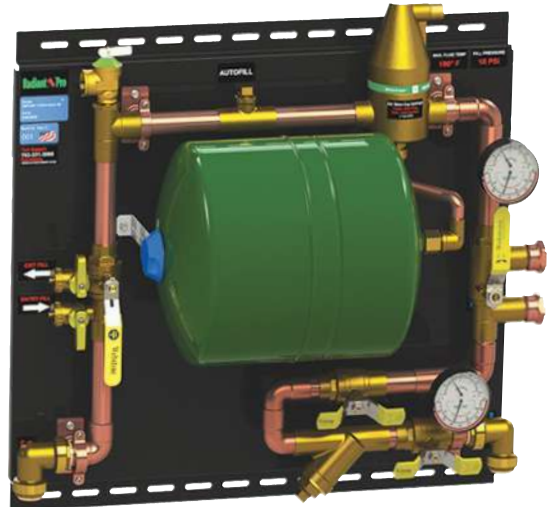
Radiant Pro Panels (Zoning By Pump Panels-Taco)

Radiant Pro Panels are customized panels designed for your specific applications. The Zoning by Pump Panels are designed to be a two-panel system, the first being the Master Pump Panel for the boiler loop and the second being the Zoning by Pump panel selected based on the number of zones. The Master Pump Panel can be selected with or without a boiler circulator and multiple circulators are available. Multiple circulator options exist to be sized correctly for the boiler. The MPump panels are for boilers that do NOT have circulators as they provide the boiler loop circulator; the CMPump panels are for boilers that have circulators pre-installed as is the case with most Combination boilers. The Master Pump Panels include the boiler circulator (if applicable), air eliminators, expansion tanks, relief valves and push type fittings to connect to the Zoning by Circulator Panels. The Zoning by Pump Panels include the controls and zoning circulators and push type fitting to connect to the Master Pump Panels. Virtually everything is piped, wired and pressure tested. These systems are designed to install and fill easily and quickly.

Radiant Pro



**RPP-MPump-T-0015E-XXXX-RP
with RPP-Z-T-0015E-1T3P-RP**



**RPP-CMPump-T-XXXX-XXXX-RP
with RPP-Z-T-0015E-2T4P-RP
(for Combi boilers with internal boiler pump)**

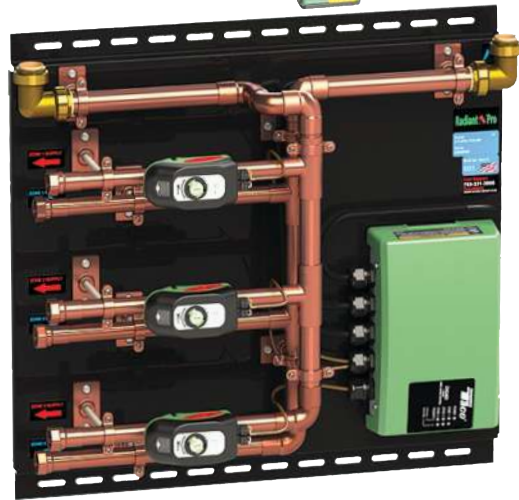
Radiant Pro Panels (Zoning By Pump Panels-Taco) Continued

Panel	Master Pump Panels (Use only with Zoning By Pump Panels)
RPP-MPump-T-0015E-XXXX-RP	Radiant Pro Panel, Master Pump Panel, Taco Control, Primary/Secondary, Boiler Pump - 0015E3-2F4, For Use with 2-4 Zones, Pre-Wired
RPP-MPump-T-0011-XXXX-RP	Radiant Pro Panel, Master Pump Panel, Taco Control, Primary/Secondary, Boiler Pump - 0011-F4, For Use with 2-4 Zones, Pre-Wired
RPP-MPump-T-0015-XXXX-RP	Radiant Pro Panel, Master Pump Panel, Taco Control, Primary/Secondary, Boiler Pump - 0015-MSF3-IFC, For Use with 2-4 Zones, Pre-Wired
RPP-CMPump-T-XXXX-XXXX-RP	Radiant Pro Panel, Master Pump Panel, For Boilers with Boiler Circulator, Primary/Secondary
Panel	Zoning By Pump Panels - 1 Temperature (Use only with Master Pump Panels)
RPP-Z-T-0015E-1T2P-RP	Zone Pump Panel, 1 Temp, 2 Zones, SR503-EXP4, System Pumps (2) - 0015E3-2F4
RPP-Z-T-0015E-1T3P-RP	Zone Pump Panel, 1 Temp, 3 Zones, SR503-EXP4, System Pumps (3) - 0015E3-2F4
RPP-Z-T-0015E-1T4P-RP	Zone Pump Panel, 1 Temp, 4 Zones, SR504-EXP4, System Pumps (4) - 0015E3-2F4
RPP-Z-T-VT2218-1T2P-RP	Zone Pump Panel, 1 Temp, 2 Zones, includes SR503-EXP4, System Pumps (2) - VT2218
RPP-Z-T-VT2218-1T3P-RP	Zone Pump Panel, 1 Temp, 3 Zones, SR503-EXP4, System Pumps (3) - VT2218
RPP-Z-T-VT2218-1T4P-RP	Zone Pump Panel, 1 Temp, 4 Zones, SR504-EXP4, System Pumps (4) - VT2218
RPP-Z-T-0015-1T2P-RP	Zone Pump Panel, 1 Temp, 2 Zones, SR503-EXP4, System Pumps (2) - 0015-MSF3-IFC
RPP-Z-T-0015-1T3P-RP	Zone Pump Panel, 1 Temp, 3 Zones, SR503-EXP4, System Pumps (3) - 0015-MSF3-IFC
RPP-Z-T-0015-1T4P-RP	Zone Pump Panel, 1 Temp, 4 Zones, SR504-EXP4, System Pumps (4) - 0015-MSF3-IFC
Panel	Zoning By Pump Panels - 2 Temperatures (Use only with Master Pump Panels)
RPP-Z-T-0015E-2T2P-RP	Zone Pump Panel, 2 Temp, 2 Zones, SR503-EXP4, System Pumps (2) - 0015E3-2F4
RPP-Z-T-0015E-2T3P-RP	Zone Pump Panel, 2 Temp, 3 Zones, SR503-EXP4, System Pumps (3) - 0015E3-2F4
RPP-Z-T-0015E-2T4P-RP	Zone Pump Panel, 2 Temp, 4 Zones, SR504-EXP4, System Pumps (4) - 0015E3-2F4
RPP-Z-T-VT2218-2T2P-RP	Zone Pump Panel, 2 Temp, 2 Zones, SR503-EXP4, System Pumps (2) - VT2218
RPP-Z-T-VT2218-2T3P-RP	Zone Pump Panel, 2 Temp, 3 Zones, SR503-EXP4, System Pumps (3) - VT2218
RPP-Z-T-VT2218-2T4P-RP	Zone Pump Panel, 2 Temp, 4 Zones, SR504-EXP4, System Pumps (4) - VT2218
RPP-Z-T-0015-2T2P-RP	Zone Pump Panel, 2 Temp, 2 Zones, SR503-EXP4, System Pumps (2) - 0015-MSF3-IFC
RPP-Z-T-0015-2T3P-RP	Zone Pump Panel, 2 Temp, 3 Zones, SR503-EXP4, System Pumps (3) - 0015-MSF3-IFC
RPP-Z-T-0015-2T4P-RP	Zone Pump Panel, 2 Temp, 4 Zones, SR504-EXP4, System Pumps (4) - 0015-MSF3-IFC

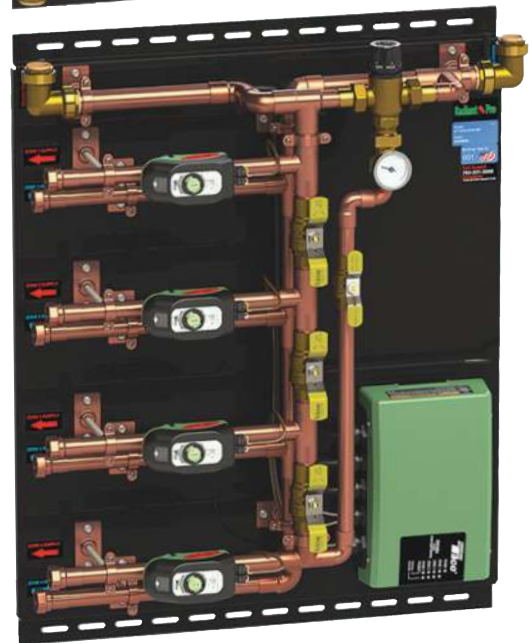
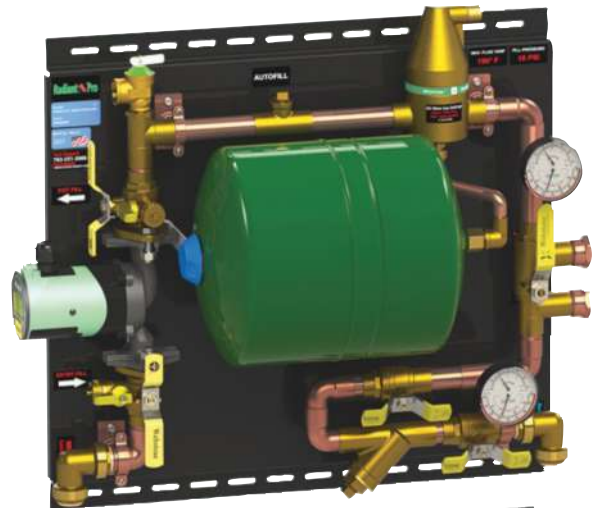
Radiant Pro Panels (Zoning By Zone Valve Panels-Taco)

Radiant Pro Panels are customized panels designed for your specific applications. The Zoning by Zone Valve Panels are designed to be a two-panel system, the first being the Master Valve Panel for the boiler loop and the second being the Zoning by Zone Valve panel selected based on the number of zones. The Master Valve Panel can be selected with or without a boiler circulator and multiple circulators are available. Multiple circulator options exist to be sized correctly for the boiler. The MValve panels are for boilers that do NOT have circulators as they provide the boiler loop circulator; the CMValve panels are for boilers that have circulators pre-installed as is the case with most Combination boilers. The Master Valve Panels include the boiler circulator (if applicable), air eliminators, expansion tanks, relief valves and push type fittings to connect to the Zoning by Zone Valve Panels. The Zoning by Zone Valve Panels include the controls and zone valves and push type fitting to connect to the Master Valve Panels. Virtually everything is piped, wired and pressure tested. These systems are designed to install and fill easily and quickly.

Radiant Pro



**RPP-MValve-T-0015E-0015E-RP
with RPP-Z-T-075-1T3V-RP**



**RPP-CMValve-T-XXXX-VT2218-RP
with RPP-Z-T-075-2T4V-RP
(for Combi boilers with internal boiler pump)**

Radiant Pro Panels (Zoning By Zone Valve Panels-Taco) Continued

Panel	Master Valve Panels (Use with Zoning by Zone Valve Panels)
RPP-MValve-T-0015E-0015E-RP	Master Valve Panel, Taco, Primary/Secondary, Boiler Pump - 0015E3-2F4, System Pump - 0015E3-2F4, For Use with 2-4 Zones, Pre-Wired
RPP-MValve-T-0011-0015E-RP	Master Valve Panel, Taco, Primary/Secondary, Boiler Pump - 0011-F4, System Pump - 0015E3-2F4, For Use with 2-4 Zones, Pre-Wired
RPP-MValve-T-0015-0015-RP	Master Valve Panel, Taco, Primary/Secondary, Boiler Pump - 0015-MSF3-IFC, System Pump - 0015-MSF3-IFC, For Use with 2-4 Zones, Pre-Wired
RPP-MValve-T-0011-0011-RP	Master Valve Panel, Taco, Primary/Secondary, Boiler Pump - 0011-F4, System Pump - 0011-F4, For Use with 2-4 Zones, Pre-Wired
RPP-CMValve-T-XXXX-0015E-RP	Master Valve Panel, For Boilers with Boiler Circulator, Taco, Primary/Secondary, For Use with 2-4 Zones, System Pump - 0015E3-2F4
RPP-CMValve-T-XXXX-VT2218-RP	Master Valve Panel, For Boilers with Boiler Circulator, Taco, Primary/Secondary, For Use with 2-4 Zones, System Pump - VT2218
RPP-CMValve-T-XXXX-0015-RP	Master Valve Panel, For Boilers with Boiler Circulator, Taco, Primary/Secondary, For Use with 2-4 Zones, System Pump - 0015-MSF3-IFC
RPP-CMValve-T-XXXX-0011-RP	Master Valve Panel, For Boilers with Boiler Circulator, Taco, Primary/Secondary, For Use with 2-4 Zones, System Pump - 0011-F4
Panel	Zoning By Zone Valve Panels - 1 Temperature (Use with Master Valve Panel)
RPP-Z-T-075-1T2V-RP	Zone Valve Panel, 1 Temperature, 2 Zones, ZVC403-4, (2) Z075C2-1 Zone Sentry Valves
RPP-Z-T-075-1T3V-RP	Zone Valve Panel, 1 Temperature, 3 Zones, ZVC403-4, (3) Z075C2-1 Zone Sentry Valves
RPP-Z-T-075-1T4V-RP	Zone Valve Panel, 1 Temperature, 4 Zones, ZVC404-4, (4) Z075C2-1 Zone Sentry Valves
Panel	Zoning By Zone Valve Panels - 2 Temperatures (Use with Master Valve Panel)
RPP-Z-T-075-2T2V-RP	Zone Valve Panel, 2 Temperatures, 2 Zones, ZVC403-4, (2) Z075C2-1 Zone Sentry Valves
RPP-Z-T-075-2T3V-RP	Zone Valve Panel, 2 Temperature, 3 Zones, ZVC403-4, (3) Z075C2-1 Zone Sentry Valves
RPP-Z-T-075-2T4V-RP	Zone Valve Panel, 2 Temperatures, 4 Zones, ZVC404-4, (4) Z075C2-1 Zone Sentry Valves

Radiant Pro Panels (Zoning By Actuator Panels-Taco)

Radiant Pro Panels are customized panels designed for your specific applications. The Zoning by Actuator Panels are designed to be a one-panel system designed to work with a heating system that already has zoning with either zone valves or zoning actuators on radiant heating manifolds. The Master Actuator Panel can be selected with or without a boiler circulator and multiple circulators are available. Multiple circulator options exist to be sized correctly for the boiler. The MActuator panels are for boilers that do NOT have circulators as they provide the boiler loop circulator; the CMActuator panels are for boilers that have circulators pre-installed as is the case with most Combination boilers. The Master Actuator Panels include the boiler circulator (if applicable), controls, air eliminators, expansion tanks, relief valves and push type fittings to connect to the rest of the heating system. Virtually everything is piped, wired and pressure tested. These systems are designed to install and fill easily and quickly.



RPP-MActuator-T-0015E-0015E-RP



RPP-CMActuator-T-XXXX-VT2218-RP

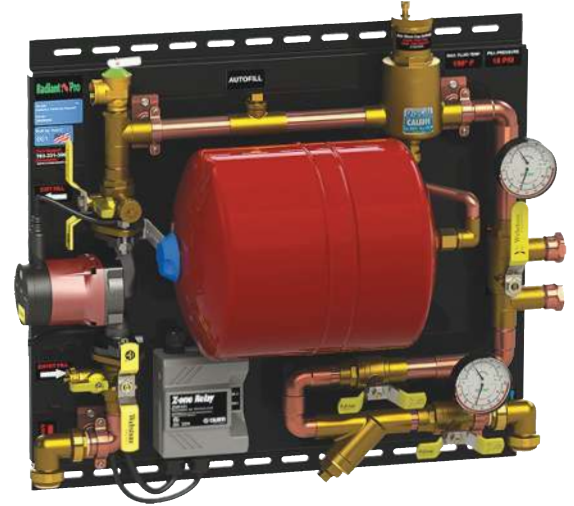
Panel	Master Actuator Panels (For Zoning using Actuators)
RPP-MActuator-T-0015E-0015E-RP	Radiant Pro Actuator Panel, Taco, ZVC404-4, Boiler Pump - 0015E3-2F4, System Pump - 0015E3-2F4, For Use with 2-4 Zones, Pre-Wired
RPP-MActuator-T-0011-0015E-RP	Radiant Pro Actuator Panel, Taco, ZVC404-4, Primary/Secondary, Boiler Pump - 0011-F4, System Pump - 0015E3-2F4, For Use with 2-4 Zones, Pre-Wired
RPP-MActuator-T-0015-0015-RP	Radiant Pro Actuator Panel, Taco, ZVC404-4, Boiler Pump - 0015-MSF3-IFC, System Pump - 0015-MSF3-IFC, For Use with 2-4 Zones, Pre-Wired
RPP-MActuator-T-0011-0011-RP	Radiant Pro Actuator Panel, Taco, ZVC404-4, Boiler Pump - 0011-F4, System Pump - 0011-F4, For Use with 2-4 Zones, Pre-Wired
RPP-CMActuator-T-XXXX-0015E-RP	Radiant Pro Actuator Panel, For Boilers with Boiler Circulator, Taco, Primary/Secondary, For use with 2-4 Zones, Pre-Wired, System Pump - 0015E3-2F4
RPP-CMActuator-T-XXXX-VT2218-RP	Radiant Pro Actuator Panel, For Boilers with Boiler Circulator, Taco, Primary/Secondary, For use with 2-4 Zones, Pre-Wired, System Pump - VT2218
RPP-CMActuator-T-XXXX-0015-RP	Radiant Pro Actuator Panel, For Boilers with Boiler Circulator, Taco, Primary/Secondary, For use with 2-4 Zones, Pre-Wired, System Pump - 0015-MSF3-IFC
RPP-CMActuator-T-XXXX-0011-RP	Radiant Pro Actuator Panel, For Boilers with Boiler Circulator, Taco, Primary/Secondary, For use with 2-4 Zones, Pre-Wired, System Pump - 0011-F4

Radiant Pro Panels (Stand Alone Panels-Grundfos)

Radiant Pro Panels are customized panels designed for your specific applications. The Stand-Alone Panels are designed to be the complete boiler piping solution for your boiler, whether your boiler has a circulator installed in it or not. The M1Zn panels are for boilers that do NOT have circulators as they provide the boiler loop circulator; the CM1Zn panels are for boilers that have circulators pre-installed as is the case with most Combination boilers. These Stand Alone Panels include the circulators, controls, air eliminators, expansion tanks, relief valves and push type fittings to connect to the rest of the heating system. Everything is piped, wired and pressure tested. These systems are designed to install and fill easily and quickly. The Grundfos panels are available with either Grundfos or Caleffi controls.



RPP-M1Zn-C-1558-1558-RP



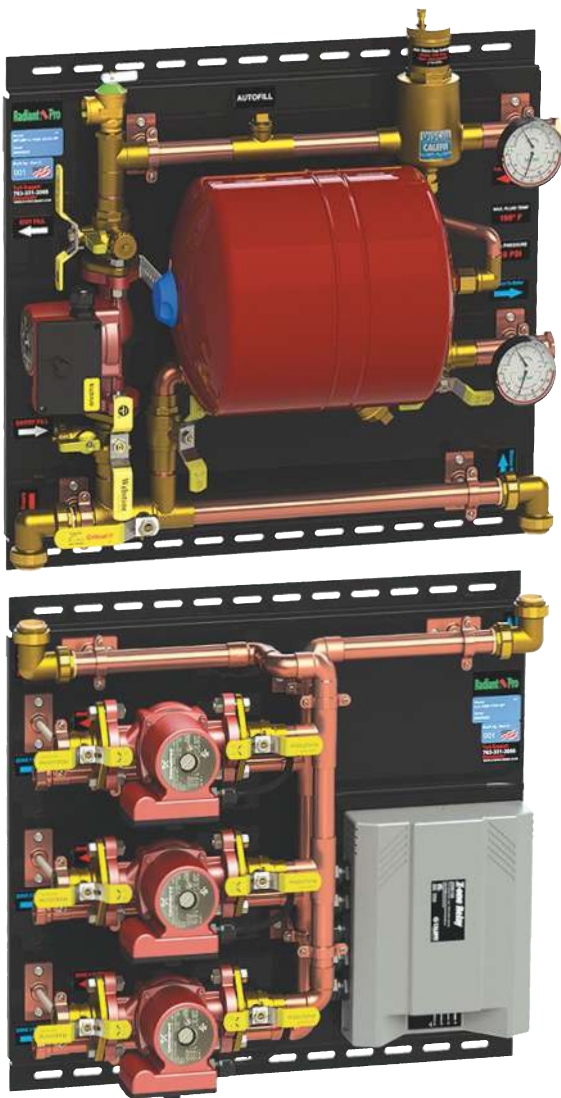
RPP-CM1Zn-C-XXXX-Alpha2-RP

Panel	Primary Circuits - 1 Zone (Stand Alone Panels)
RPP-M1Zn-C-1558-Alpha2-RP	Radiant Pro Panel, Primary/Secondary, 1 Zone, Pre-Wired, Caleffi Control, Boiler Pump - UPS15-58, System Pump - Alpha2
RPP-M1Zn-C-2699-Alpha2-RP	Radiant Pro Panel, Primary/Secondary, 1 Zone, Pre-Wired, Caleffi Control, Boiler Pump - UPS26-99, System Pump - Alpha2
RPP-M1Zn-C-1558-1558-RP	Radiant Pro Panel, Primary/Secondary, 1 Zone, Pre-Wired, Caleffi Control, Boiler Pump - UPS15-58, System Pump - UPS15-58
RPP-M1Zn-C-2699-2699-RP	Radiant Pro Panel, Primary/Secondary, 1 Zone, Pre-Wired, Caleffi Control, Boiler Pump - UPS26-99, System Pump - UPS26-99
RPP-M1Zn-C-2699-1558-RP	Radiant Pro Panel, Primary/Secondary, 1 Zone, Pre-Wired, Caleffi Control, Boiler Pump - UPS26-99, System Pump - UPS15-58
RPP-M1Zn-G-1558-Alpha2-RPP	Radiant Pro Panel, Primary/Secondary, 1 Zone, Pre-Wired, Grundfos Control, Boiler Pump - UPS15-58, System Pump - Alpha2
RPP-M1Zn-G-2699-Alpha2-RPP	Radiant Pro Panel, Primary/Secondary, 1 Zone, Pre-Wired, Grundfos Control, Boiler Pump - UPS26-99, System Pump - Alpha2
RPP-M1Zn-G-1558-1558-RP	Radiant Pro Panel, Primary/Secondary, 1 Zone, Pre-Wired, Grundfos Control, Boiler Pump - UPS15-58, System Pump - UPS15-58
RPP-M1Zn-G-2699-2699-RP	Radiant Pro Panel, Primary/Secondary, 1 Zone, Pre-Wired, Grundfos Control, Boiler Pump - UPS26-99, System Pump - UPS26-99
RPP-CM1Zn-G-XXXX-Alpha2-RPP	Radiant Pro Panel, For Use with Boilers with Boiler Circulator, Grundfos, Primary/Secondary, 1 Zone, Pre-Wired, System Pump - Alpha2
RPP-CM1Zn-G-XXXX-1558-RPP	Radiant Pro Panel, For Use with Boilers with Boiler Circulator, Grundfos, Primary/Secondary, 1 Zone, Pre-Wired, System Pump - UPS15-58
RPP-CM1Zn-G-XXXX-2699-RPP	Radiant Pro Panel, For Use with Boilers with Boiler Circulator, Grundfos, Primary/Secondary, 1 Zone, Pre-Wired, System Pump - UPS26-99

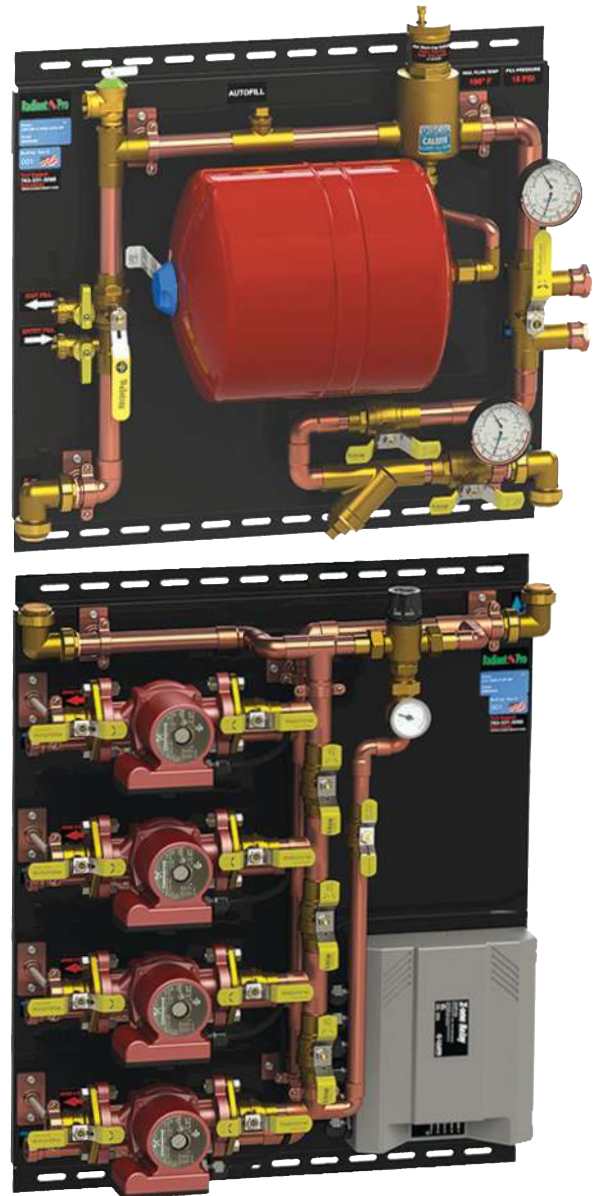
Radiant Pro Panels (Zoning By Pump Panels-Grundfos)

Radiant Pro Panels are customized panels designed for your specific applications. The Zoning by Pump Panels are designed to be a two-panel system, the first being the Master Pump Panel for the boiler loop and the second being the Zoning by Pump panel selected based on the number of zones. The Master Pump Panel can be selected with or without a boiler circulator and multiple circulators are available. Multiple circulator options exist to be sized correctly for the boiler. The MPump panels are for boilers that do NOT have circulators as they provide the boiler loop circulator; the CMPump panels are for boilers that have circulators pre-installed as is the case with most Combination boilers. The Master Pump Panels include the boiler circulator (if applicable), air eliminators, expansion tanks, relief valves and push type fittings to connect to the Zoning by Pump Panels. The Zoning by Pump Panels include the controls and zoning circulators and push type fitting to connect to the Master Pump Panels. Virtually everything is piped, wired and pressure tested. These systems are designed to install and fill easily and quickly.

Radiant Pro



**RPP-MPump-C-1558-XXXX-RP
with RPP-Z-C-1558-1T3P-RP**



**RPP-CMPump-C-XXXX-XXXX-RP
with RPP-Z-C-1558-2T4P-RP
(for Combi boilers with internal boiler pump)**

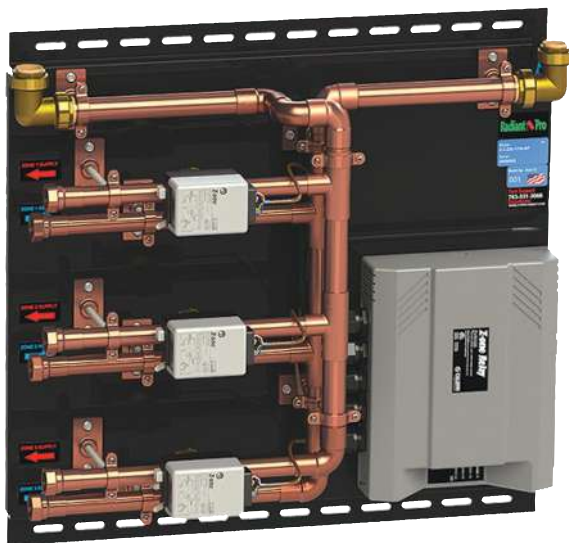
Radiant Pro Panels (Zoning By Pump Panels-Grundfos) Continued

Panel	Master Pump Panels (Use with Zoning By Pump Panels)
RPP-MPump-C-1558-XXXX-RP	Master Pump Panel, Primary/Secondary, Caleffi Control, 2-4 Zones, Pre-Wired, System Pump - UPS15-58
RPP-MPump-C-2699-XXXX-RP	Master Pump Panel, Primary/Secondary, Caleffi Control, 2-4 Zones, Pre-Wired, System Pump - UPS26-99
RPP-MPump-G-1558-XXXX-RP	Master Pump Panel, Grundfos Control, Primary/Secondary, 2-4 Zones, Pre-Wired, Boiler Pump - UPS15-58
RPP-MPump-G-2699-XXXX-RP	Master Pump Panel, Grundfos Control, Primary/Secondary, 2-4 Zones, Pre-Wired, Boiler Pump - UPS26-99
RPP-CMPump-G-XXXX-XXXX-RP	Radiant Pro Pump Panel, For Boilers with Boiler Circulator, Grundfos Control, Primary/Secondary, No Circulator, 2-4 Zones
Panel	Zoning By Pump Panels - 1 Temperature (Use with Master Pump Panel)
RPP-Z-C-Alpha2-1T2P-RP	Radiant Pro Panel, Zoning by ECM Pump Panel, Caleffi Control, Pre-Wired, 1 Temp, 2 Zone, System Pump - (2) Alpha2
RPP-Z-C-Alpha2-1T3P-RP	Radiant Pro Panel, Zoning by ECM Pump Panel, Caleffi Control, Pre-Wired, 1 Temp, 3 Zone, System Pump - (3) Alpha2
RPP-Z-C-Alpha2-1T4P-RP	Radiant Pro Panel, Zoning by ECM Pump Panel, Caleffi Control, Pre-Wired, 1 Temp, 4 Zone, System Pump - (4) Alpha2
RPP-Z-C-1558-1T2P-RP	Radiant Pro Panel, Zoning by Pump Panel, Caleffi Control, Pre-Wired, 1 Temp, 2 Zone, System Pump - (2) UPS15-58
RPP-Z-C-1558-1T3P-RP	Radiant Pro Panel, Zoning by Pump Panel, Caleffi Control, Pre-Wired, 1 Temp, 3 Zone, System Pump - (3) UPS15-58
RPP-Z-C-1558-1T4P-RP	Radiant Pro Panel, Zoning by Pump Panel, Caleffi Control, Pre-Wired, 1 Temp, 4 Zone, System Pump - (4) UPS15-58
RPP-Z-G-Alpha2-1T2P-RP	Radiant Pro Panel, Zoning by ECM Pump Panel, Grundfos, Pre-Wired, 1 Temp, 2 Zone, System Pumps - (2) Alpha2
RPP-Z-G-Alpha2-1T3P-RP	Radiant Pro Panel, Zoning by ECM Pump Panel, Grundfos, Pre-Wired, 1 Temp, 3 Zone, System Pumps - (3) Alpha2
RPP-Z-G-Alpha2-1T4P-RP	Radiant Pro Panel, Zoning by ECM Pump Panel, Grundfos, Pre-Wired, 1 Temp, 4 Zone, System Pumps - (4) Alpha2
RPP-Z-G-1558-1T2P-RP	Radiant Pro Panel, Zoning by Pump Panel, Grundfos Control, Pre-Wired, 1 Temp, 2 Zone, System Pump - (2) UPS15-58
RPP-Z-G-1558-1T3P-RP	Radiant Pro Panel, Zoning by Pump Panel, Grundfos Control, Pre-Wired, 1 Temp, 3 Zone, System Pump - (3) UPS15-58
RPP-Z-G-1558-1T4P-RP	Radiant Pro Panel, Zoning by Pump Panel, Grundfos Control, Pre-Wired, 1 Temp, 4 Zone, System Pump - (4) UPS15-58
Panel	Zoning By Pump Panels - 2 Temperatures (Use with Master Pump Panel)
RPP-Z-C-Alpha2-2T2P-RP	Radiant Pro Panel, Zoning by Pump Panel, Caleffi Control, Pre-Wired, 2 Temp, 2 Zone, System Pump - (2) Alpha2
RPP-Z-C-Alpha2-2T3P-RP	Radiant Pro Panel, Zoning by Pump Panel, Caleffi Control, Pre-Wired, 2 Temp, 3 Zone, System Pump - (3) Alpha2
RPP-Z-C-Alpha2-2T4P-RP	Radiant Pro Panel, Zoning by Pump Panel, Caleffi Control, Pre-Wired, 2 Temp, 4 Zone, System Pump - (4) Alpha2
RPP-Z-C-1558-2T2P-RP	Radiant Pro Panel, Zoning by Pump Panel, Caleffi Control, Pre-Wired, 2 Temp, 2 Zone, System Pump - (2) UPS15-58
RPP-Z-C-1558-2T3P-RP	Radiant Pro Panel, Zoning by Pump Panel, Caleffi Control, Pre-Wired, 2 Temp, 3 Zone, System Pump - (3) UPS15-58
RPP-Z-C-1558-2T4P-RP	Radiant Pro Panel, Zoning by Pump Panel, Caleffi Control, Pre-Wired, 2 Temp, 4 Zone, System Pump - (4) UPS15-58
RPP-Z-G-Alpha2-2T2P-RP	Radiant Pro Panel, Zoning by ECM Pump Panel, Grundfos, Pre-Wired, 2 Temp, 2 Zone, System Pumps - (2) Alpha2
RPP-Z-G-Alpha2-2T3P-RP	Radiant Pro Panel, Zoning by ECM Pump Panel, Grundfos, Pre-Wired, 2 Temp, 3 Zone, System Pumps - (3) Alpha2
RPP-Z-G-Alpha2-2T4P-RP	Radiant Pro Panel, Zoning by ECM Pump Panel, Grundfos, Pre-Wired, 2 Temp, 4 Zone, System Pumps - (4) Alpha2
RPP-Z-G-1558-2T2P-RP	Radiant Pro Panel, Zoning by Pump Panel, Grundfos Control, Pre-Wired, 2 Temp, 2 Zone, System Pump - (2) UPS15-58
RPP-Z-G-1558-2T3P-RP	Radiant Pro Panel, Zoning by Pump Panel, Grundfos Control, Pre-Wired, 2 Temp, 3 Zone, System Pump - (3) UPS15-58
RPP-Z-G-1558-2T4P-RP	Radiant Pro Panel, Zoning by Pump Panel, Grundfos Control, Pre-Wired, 2 Temp, 4 Zone, System Pump - (4) UPS15-58

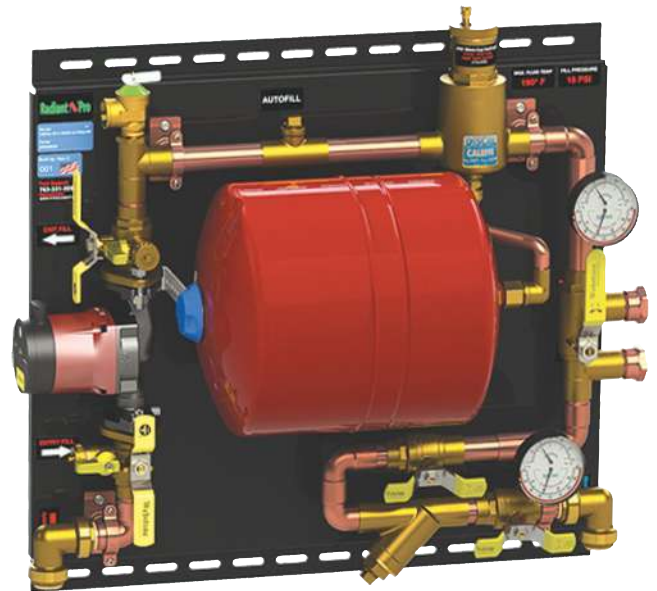
Radiant Pro Panels (Zoning By Zone Valve Panels-Grundfos)

Radiant Pro Panels are customized panels designed for your specific applications. The Zoning by Zone Valve Panels are designed to be a two-panel system, the first being the Master Valve Panel for the boiler loop and the second being the Zoning by Zone Valve panel selected based on the number of zones. The Master Valve Panel can be selected with or without a boiler circulator and multiple circulators are available. Multiple circulator options exist to be sized correctly for the boiler. The MValve panels are for boilers that do NOT have circulators as they provide the boiler loop circulator; the CMValve panels are for boilers that have circulators pre-installed as is the case with most Combination boilers. The Master Valve Panels include the boiler circulator (if applicable), air eliminators, expansion tanks, relief valves and push type fittings to connect to the Zoning by Zone Valve Panels. The Zoning by Zone Valve Panels include the controls and zone valves and push type fitting to connect to the Master Valve Panels. Virtually everything is piped, wired and pressure tested. These systems are designed to install and fill easily and quickly.

Radiant Pro



**RPP-MValve-C-1558-Alpha2-RP
with RPP-Z-C-Z55-1T3P-RP**



**RPP-CMValve-C-XXXX-Alpha2-RP
with RPP-Z-C-Z55-2T4V-RP
(for Combi boilers with internal boiler pump)**

Radiant Pro Panels (Zoning By Zone Valve Panels-Grundfos) Continued

Panel	Master Valve Panels (Use with Zoning by Zone Valve Panels)
RPP-MValve-C-1558-Alpha2-RP	Radiant Pro Panel, Caleffi Control, Primary/Secondary, for 2-4 Zones with Zone Valves, Pre-Wired, Boiler Pump - UPS15-58, System Pump - Alpha2
RPP-MValve-C-2699-Alpha2-RP	Radiant Pro Panel, Caleffi Control, Primary/Secondary, for 2-4 Zones with Zone Valves, Pre-Wired, Boiler Pump - UPS26-99, System Pump - Alpha2
RPP-MValve-C-1558-1558-RP	Radiant Pro Panel, Caleffi Control, Primary/Secondary, for 2-4 Zones with Zone Valves, Pre-Wired, Boiler Pump - UPS15-58, System Pump - UPS15-58
RPP-MValve-C-2699-2699-RP	Radiant Pro Panel, Caleffi Control, Primary/Secondary, for 2-4 Zones with Zone Valves, Pre-Wired, Boiler Pump - UPS26-99, System Pump - UPS26-99
RPP-MValve-G-1558-Alpha2-RP	Radiant Pro Panel, Grundfos Control, Primary/Secondary, for 2-4 Zones with Zone Valves, Pre-Wired, Boiler Pump - UPS15-58, System Pump - Alpha2
RPP-MValve-G-2699-Alpha2-RP	Radiant Pro Panel, Grundfos Control, Primary/Secondary, for 2-4 Zones with Zone Valves, Pre-Wired, Boiler Pump - UPS26-99, System Pump - Alpha2
RPP-MValve-G-1558-1558-RP	Radiant Pro Panel, Grundfos Control, Primary/Secondary, for 2-4 Zones with Zone Valves, Pre-Wired, Boiler Pump - UPS15-58, System Pump - UPS15-58
RPP-MValve-G-2699-2699-RP	Radiant Pro Panel, Grundfos Control, Primary/Secondary, for 2-4 Zones with Zone Valves, Pre-Wired, Boiler Pump - UPS26-99, System Pump - UPS26-99
RPP-CMValve-G-XXXX-Alpha2-RP	Radiant Pro Panel, For Boilers with Boiler Circulator, Grundfos Control, for 2-4 Zones with Actuators, Primary/Secondary, System Pump - Alpha2
RPP-CMValve-G-XXXX-1558-RP	Radiant Pro Panel, For Boilers with Boiler Circulator, Grundfos Control, for 2-4 Zones with Actuators, Primary/Secondary, System Pump - UPS15-58
RPP-CMValve-G-XXXX-2699-RP	Radiant Pro Panel, For Boilers with Boiler Circulator, Grundfos Control, for 2-4 Zones with Actuators, Primary/Secondary, System Pump - UPS26-99
Panel	Zoning By Zone Valve Panels - 1 Temperature (Use with Master Valve Panel)
RPP-Z-C-Z55-1T2V-RP	Radiant Pro Panel, Zoning by Zone Valve Panel, Caleffi Control, Caleffi Z55 Zone Valves, Pre-Wired, 1 Temp, 2 Zone
RPP-Z-C-Z55-1T3V-RP	Radiant Pro Panel, Zoning by Zone Valve Panel, Caleffi Control, Caleffi Z55 Zone Valves, Pre-Wired, 1 Temp, 3 Zone
RPP-Z-C-Z55-1T4V-RP	Radiant Pro Panel, Zoning by Zone Valve Panel, Caleffi Control, Caleffi Z55 Zone Valves, Pre-Wired, 1 Temp, 4 Zone
RPP-ZP-G-UPZV-1T2V-RP	Radiant Pro Panel, Zoning by Zone Valve Panel, Grundfos UPZV Valves, Grundfos Controls, Pre-Wired, 1 Temp, 2 Zone
RPP-ZP-G-UPZV-1T3V-RP	Radiant Pro Panel, Zoning by Zone Valve Panel, Grundfos UPZV Valves, Grundfos Controls, Pre-Wired, 1 Temp, 3 Zone
RPP-ZP-G-UPZV-1T4V-RP	Radiant Pro Panel, Zoning by Zone Valve Panel, Grundfos UPZV Valves, Grundfos Controls, Pre-Wired, 1 Temp, 4 Zone
Panel	Zoning By Zone Valve Panels - 2 Temperatures (Use with Master Valve Panel)
RPP-Z-C-Z55-2T2V-RP	Radiant Pro Panel, Zoning by Zone Valve Panel, Caleffi Control, Caleffi Z55 Zone Valves, Pre-Wired, 2 Temp, 2 Zone
RPP-Z-C-Z55-2T3V-RP	Radiant Pro Panel, Zoning by Zone Valve Panel, Caleffi Control, Caleffi Z55 Zone Valves, Pre-Wired, 2 Temp, 3 Zone
RPP-Z-C-Z55-2T4V-RP	Radiant Pro Panel, Zoning by Zone Valve Panel, Caleffi Control, Caleffi Z55 Zone Valves, Pre-Wired, 2 Temp, 4 Zone
RPP-ZP-G-UPZV-2T2V-RP	Radiant Pro Panels, Zoning by Zone Valve Panel, Grundfos UPZV Zone Valves, Grundfos Controls, Pre-Wired, 2 Temp, 2 Zone
RPP-ZP-G-UPZV-2T3V-RP	Radiant Pro Panels, Zoning by Zone Valve Panel, Grundfos UPZV Zone Valves, Grundfos Controls, Pre-Wired, 2 Temp, 3 Zone
RPP-ZP-G-UPZV-2T4V-RP	Radiant Pro Panels, Zoning by Zone Valve Panel, Grundfos UPZV Zone Valves, Grundfos Controls, Pre-Wired, 2 Temp, 4 Zone

Radiant Pro Panels (Zoning By Actuator Panels-Grundfos)

Radiant Pro Panels are customized panels designed for your specific applications. The Zoning by Actuator Panels are designed to be a one-panel system designed to work with a heating system that already has zoning with either zone valves or zoning actuators on radiant heating manifolds. The Master Actuator Panel can be selected with or without a boiler circulator and multiple circulators are available. Multiple circulator options exist to be sized correctly for the boiler. The MActuator panels are for boilers that do NOT have circulators as they provide the boiler loop circulator; the CMActuator panels are for boilers that have circulators pre-installed as is the case with most Combination boilers. The Master Actuator Panels include the boiler circulator (if applicable), controls, air eliminators, expansion tanks, relief valves and push type fittings to connect to the rest of the heating system. Virtually everything is piped, wired and pressure tested. These systems are designed to install and fill easily and quickly.



RPP-MActuator-C-1558-1558-RP

Radiant Pro



RPP-CMActuator-C-XXXX-1558-RP

Panel	Master Actuator Panels (For Zoning using Actuators)
RPP-MActuator-C-1558-Alpha2-RP	Radiant Pro Panel, Caleffi Control, for 2-4 Zones with Actuators, Pre-Wired, Boiler Pump - UPS15-58, System Pump - Alpha2
RPP-MActuator-C-2699-Alpha2-RP	Radiant Pro Actuator Panel, Caleffi Control, for 2-4 Zones with Actuators, Pre-Wired, Boiler Pump - UPS26-99, System Pump - Alpha2
RPP-MActuator-C-1558-1558-RP	Radiant Pro Panel, Caleffi Control, for 2-4 Zones with Actuators, Pre-Wired, Boiler Pump - UPS15-58, System Pump - UPS15-58
RPP-MActuator-C-2699-2699-RP	Radiant Pro Panel, Caleffi Control, for 2-4 Zones with Actuators, Pre-Wired, Boiler Pump - UPS26-99, System Pump - UPS26-99
RPP-MActuator-G-1558-Alpha2-RP	Radiant Pro Panel, Grundfos Control, for 2-4 Zones with Actuators, Pre-Wired, Boiler Pump - UPS15-58, System Pump - Alpha2
RPP-MActuator-G-2699-Alpha2-RP	Radiant Pro Panel, Grundfos Control, for 2-4 Zones with Actuators, Pre-Wired, Boiler Pump - UPS26-99, System Pump - Alpha2
RPP-MActuator-G-1558-1558-RP	Radiant Pro Panel, Grundfos Control, for 2-4 Zones with Actuators, Pre-Wired, Boiler Pump - UPS15-58, System Pump - UPS15-58
RPP-MActuator-G-2699-2699-RP	Radiant Pro Panel, Grundfos Control, for 2-4 Zones with Actuators, Pre-Wired, Boiler Pump - UPS26-99, System Pump - UPS26-99
RPP-CMActuator-G-XXXX-Alpha2-RP	Radiant Pro Panel, For Boilers with Boiler Circulator, Grundfos Control, Primary/Secondary, for 2-4 Zones with Actuators, Pre-Wired, System Pump - Alpha2
RPP-CMActuator-G-XXXX-1558-RP	Radiant Pro Panel, For Boilers with Boiler Circulator, Grundfos Control, Primary/Secondary, for 2-4 Zones with Actuators, Pre-Wired, System Pump - UPS15-58
RPP-CMActuator-G-XXXX-2699-RP	Radiant Pro Panel, For Boilers with Boiler Circulator, Grundfos Control, Primary/Secondary, for 2-4 Zones with Actuators, Pre-Wired, System Pump - UPS26-99

Your Trusted Manufacturer's Representative Since 1974!



Represented by: Mondale & Associates, Inc.
7636 Washington Ave. South / Eden Prairie, MN 55344
Phone: (952) 888-1770 / Fax: (952) 888-9636
Web: www.mondale.biz