

**maddalena\_martimucci**  
**architetto**

sector experience



Interior Design



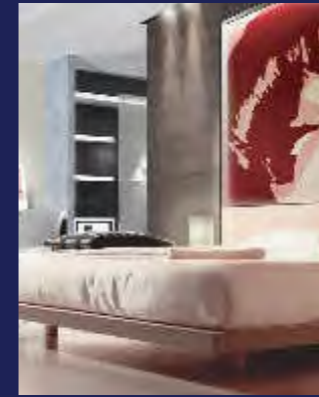
Industrial design



mixed-use



residential



hospitality



sport & leisure



public building/space



retail

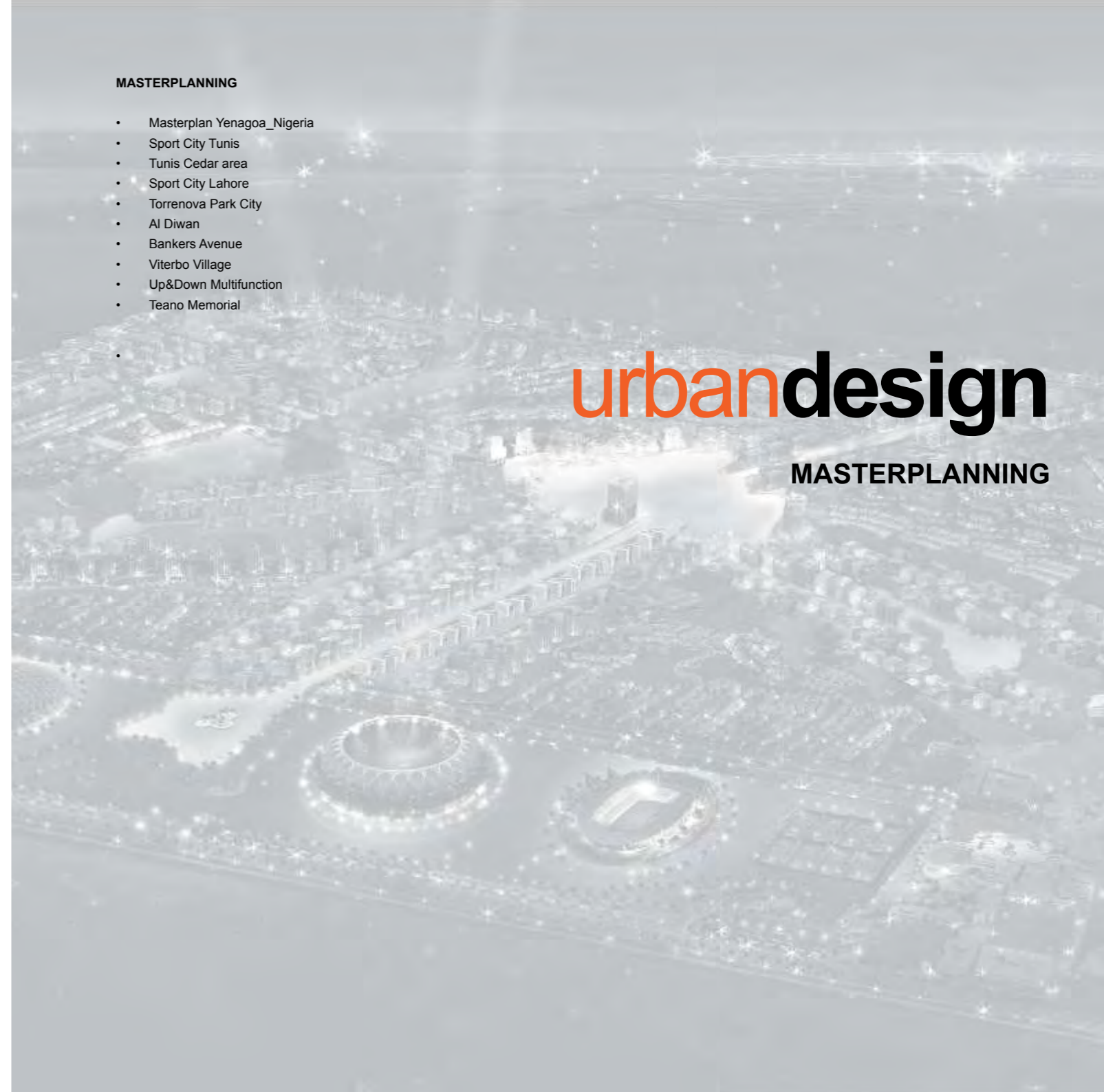
+

## MASTERPLANNING

- Masterplan Yenagoa\_Nigeria
- Sport City Tunis
- Tunis Cedar area
- Sport City Lahore
- Torrenova Park City
- Al Diwan
- Bankers Avenue
- Viterbo Village
- Up&Down Multifunction
- Teano Memorial

**urbandesign**

**MASTERPLANNING**



# MASTERPLAN YENAGOA\_NIGERIA

## Yenagoa, Nigeria

Year : 2007/08

Sector :master planning / residential

Client: Bayelsa State Government

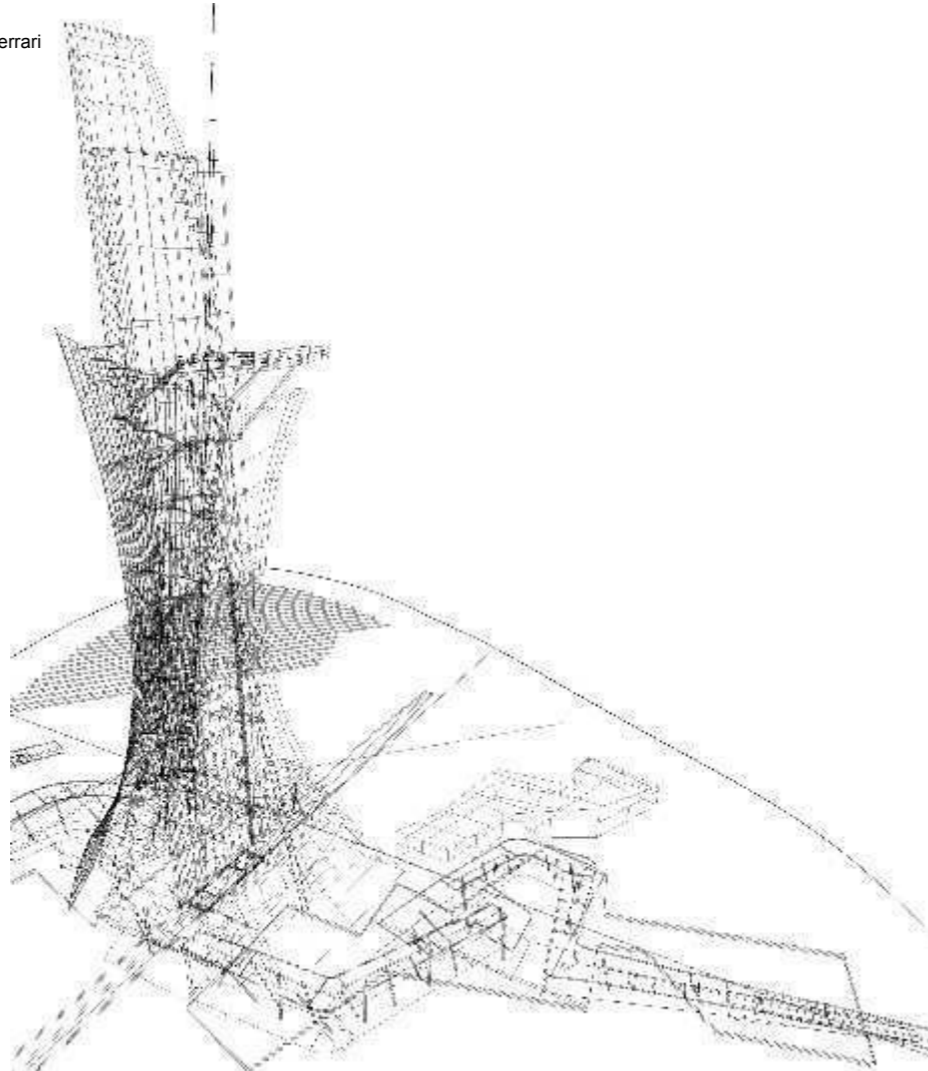
Management: CCEL Costcutter Enterprises Limited

MEP Consultant: Manens Intertecnica

Structural Consultant: Ramboll Witbybird Ing. Alberto Ferrari

Activity: Preliminary, detail and final design

Phase: **Underconstruction**



# SPORT CITY TUNIS

## Tunis, Tunisia

Year : 2006/07  
Sector : masterplanning  
Client: Bukatir Group  
Partner: SCET Tunis  
Engineering: Proger UAE  
Surface: 4.500.000 m<sup>2</sup>

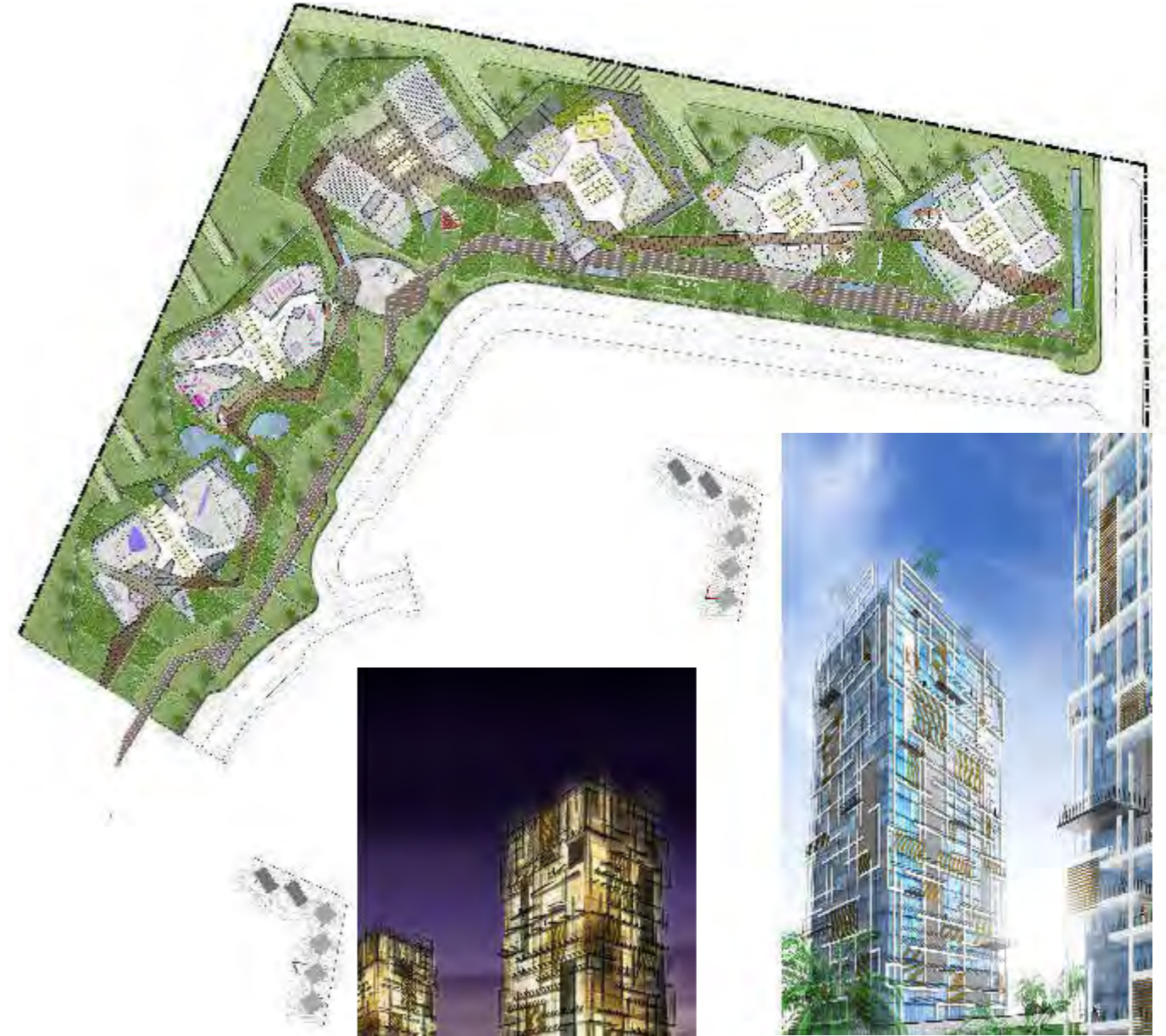
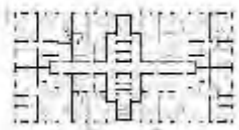
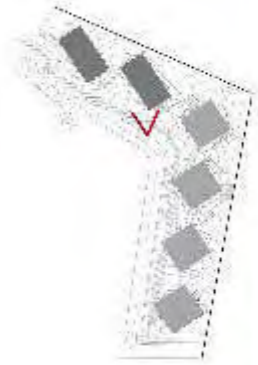
Phase: *Approved / Under construction*

Sports cities are the model of development for sustainable living. A private company, through an agreement with a large sports club (its size is measured above all its ability to generate culture, behavioral and economic profit related to the world of sport) made an offer to the Tunisian Government to re-develop part of its territory, introducing the concept of Quality Life Environment through a close relationship with sport. Tunis Sport City is the result of the design and coordination of numerous companies, responsible for its management, engineering, infrastructures and sustainable design-mobility, energy, landscape and economics etc. The first phase of work began in April 2009. The Tunis Sports City, now under construction, consists of apartment buildings and several sports facilities. sustainable design-mobility, energy, landscape and economics etc. The first phase of work began in April 2009. The Tunis Sports City, now under construction, consists of apartment buildings and several sports facilities. Built by the Bukhairt Group Construction, the project began in 2008 after being approved by the Tunisian President Zine El Abidine Ben Ali. The site is located in the Lac de Tunis, and an increasing number of multi-national companies have set up offices here. The site is bordered by two roads , the main the main Rue de Lac on one side and the motorway connecting Tunis with the suburbs on the other. The first part of the project, the "Cedar" residential project, will be completed in two-years period. The Tunis Sports City will encompass numerous entrainment facilities specializing in various sport discipline such as tennis, golf and tennis. The project also includes various sports academies, a 20.000 capacity football stadium, a swimming centre with an Olympic swimming pool, a thalassotherapy centre and an indoor service centre.

## a masterplan for a sustainable city



TUNIS CEDAR AREA



# SPORT CITY LAHORE

## Lahore, Pakistan

Year : 2006/07  
Sector : masterplanning  
Client: Bukhatir Group  
Mobility Planning Consultatn: Sistematica  
Surface: 12.500.000 m<sup>2</sup>

Phase: **Approved**

Activity: Preliminary and detail design

Lahore Sport City is a Master Plan and Architecture project for a mixed use development : it focus on sport and leisure services, combined with residential, service sector and commercial with strong liveable quality and low environmental impact. The Sport City had been developed for Buckatir Group, specialized in this sector. The surface development is about 25 million sqm of which 15 million sqm to realize. The project required 11 mosques, 21 schools, residence with different typologies (villa, tower, town houses) as well as a service sector and commercial Down Town. In addition there are therefore sport facilities, which includes 2 golf



a masterplan for a sustainable city

club, a soccer stadium, one cricket stadium, one for polo, one for basket and one swimming pool, plus healthcare centre and sport school. The whole master-plan was created to minimize the car use, thus it implements a smart public transport network and a walking distance between all services. The climate plays also an important role: in fact a network of artificial canals was created to mitigate the delta heat and the right use of geometry, to control the natural ventilation.



# TORRENOVA PARK CITY

## Rome, Italy

Year : 2010/11  
Sector :master planning / residential  
Client: Galotti Spa.  
Engineering: Starker  
Budget: € 140 million  
Surface: 450.000 m<sup>2</sup>

Activity: Preliminary, detail and final design

**International Competition Winner**  
Phase: **Underconstruction**

Torrenova Park City is the awarding masterplan for a new residential development in Rome, Italy. The project answers the specific requirements of contemporary residences, which were defined by the actual client, Gallotti Real Estate. In fact the project was developed considering location quality,

sustainability, cost control and security to give to users a liveable, comfortable and affordable place to live in, both during the day and night. The masterplan focus on the strategic localization of services, their interactions and connections throughout both car and pedestrian paths, as well

as the relationship between this new development and the city. Secondly the project has been developed according to LEED (Leadership in Energy and Environmental Design), in order to guaranty sustainable buildings and to contain costs as well.

a green life project

urbandesign  
masterplanning





## AL DIWAN CITY

### Abu Dhabi, UAE

Year : 2005/06  
Sector : masterplanning  
Client: Abu Dhabi Government and Private  
Management: Proger UAE  
Surface: 100.000.000 m<sup>2</sup>

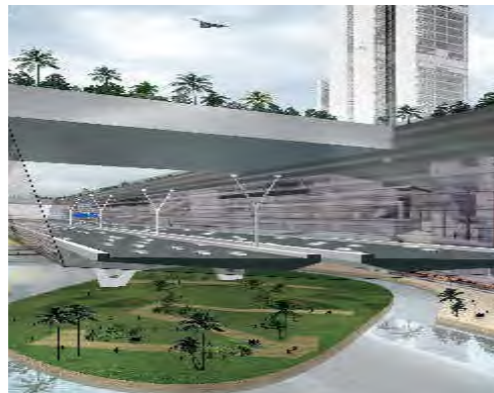
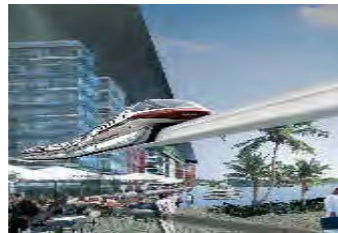
Phase: **Approved**

Activity: Preliminary design

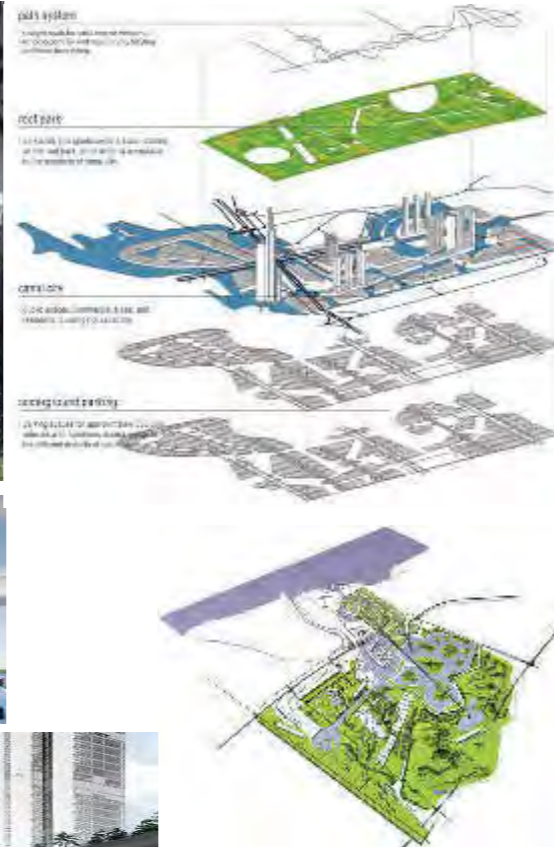
Al Diwan City is a large master plan for a new sustainable city located near Abu Dhabi.

The idea is to create an integrated urban concept that will bring a social, functional and civic mix, as well as an integrated and balanced eco-system, in terms of water, earth, air and vegetation. Due to this concept, an integrated program, project, operations and administration management are necessary to generate it. The plan is structured for phases and each one is conceived as a micro township, in order to have in every phase all the services needed. In addition the eco balancing creates economic benefits and synergies. Indeed the five dimensional organization (space, time, energy) implies extended economies. Therefore the project wants the planning for optimized design, construction, operations, administration, sustainable growth and total environmental respect.

Al Diwan mainly represents: a state of the art of urban planning concept; coordinated architectural and engineering challenge with international commercial focus that joins the immediate starting viability and financial spin off. Al Diwan is proud to have the world tallest, largest and longest building, but sustainable building element. It brings the history to make urban environment.



## study for a sustainable city



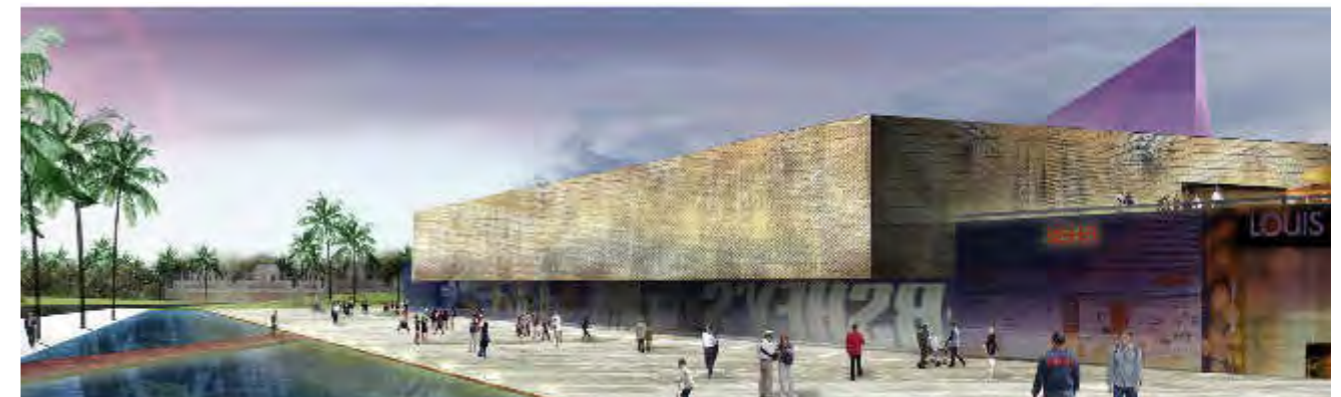
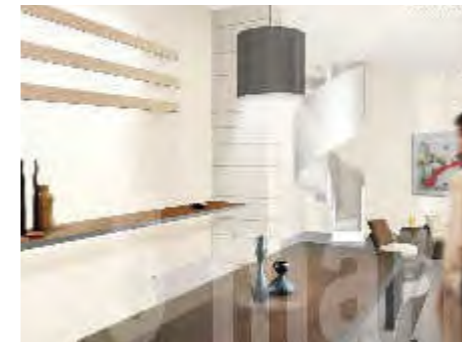
## BANKERS AVENUE

### Lahore, Pakistan

Year : 2006  
Sector : masterplanning  
Client: Bankers Avenue Cooperative Housing Society  
Management: ABA HOLDINGS Engineering Managers  
Engineering: ENNESYS Engineering Network System  
Engineering Consultant: AtePI

Phase: **approved**

Activity: Preliminary and detail design



urbandesign  
masterplanning

## livable neighbourhood



## RESIDENTIAL VILLAGE

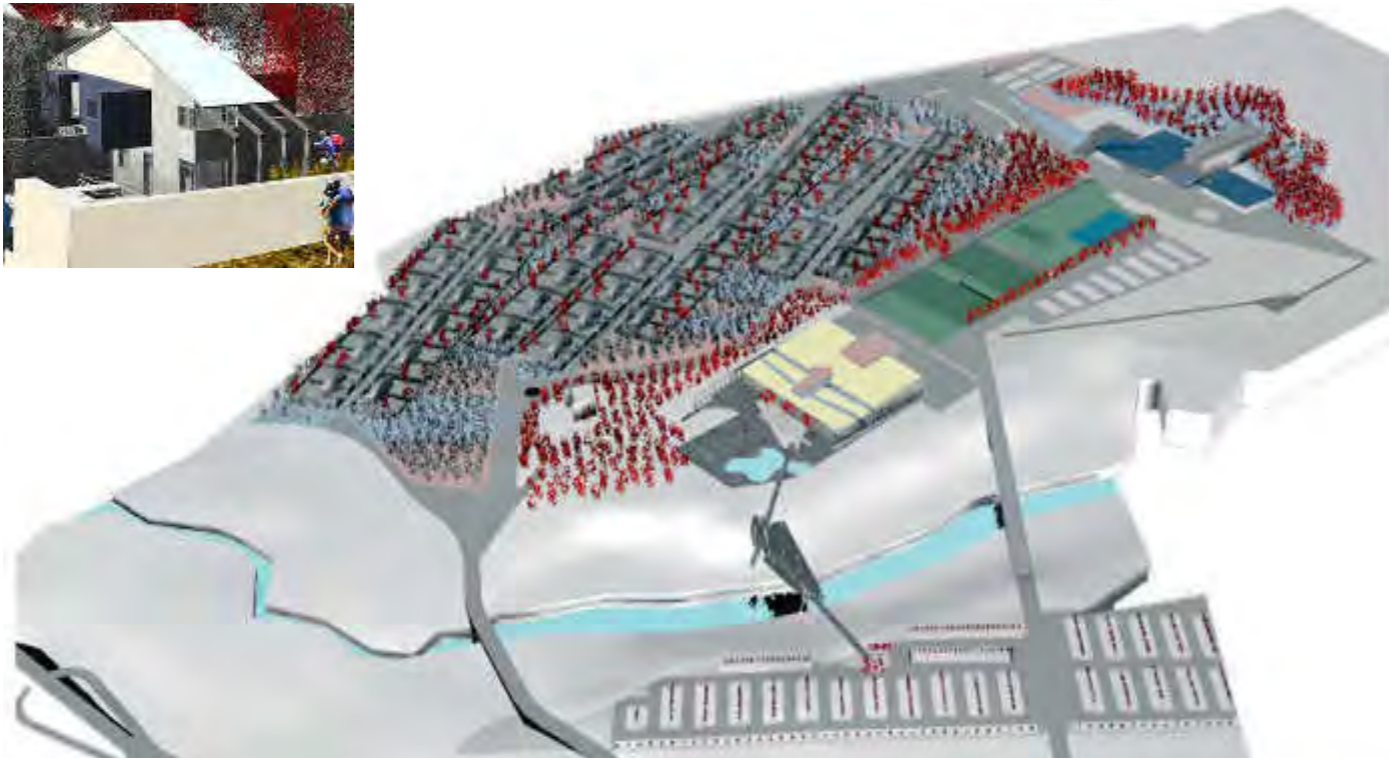
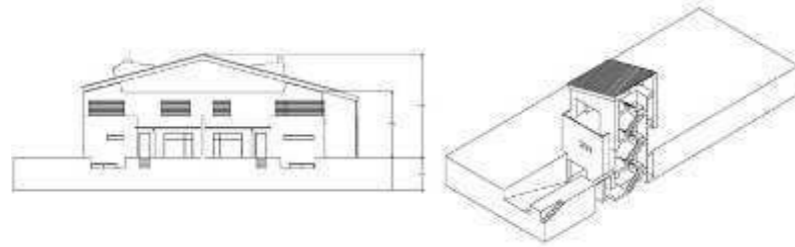
### Viterbo, Italy

Year : 2001/06  
Sector : masterplanning  
Client: Proger Spa & Beni Stabili Spa  
Managment: Proger Spa  
Budget: € 30 million  
Surface: 500.000 m<sup>2</sup>

Activity: Preliminary and detail design

Phase: *Approved*

possibility of expansion  
...objects, programm, network...



## UP&DOWN Multifunction

### Forli, Italy

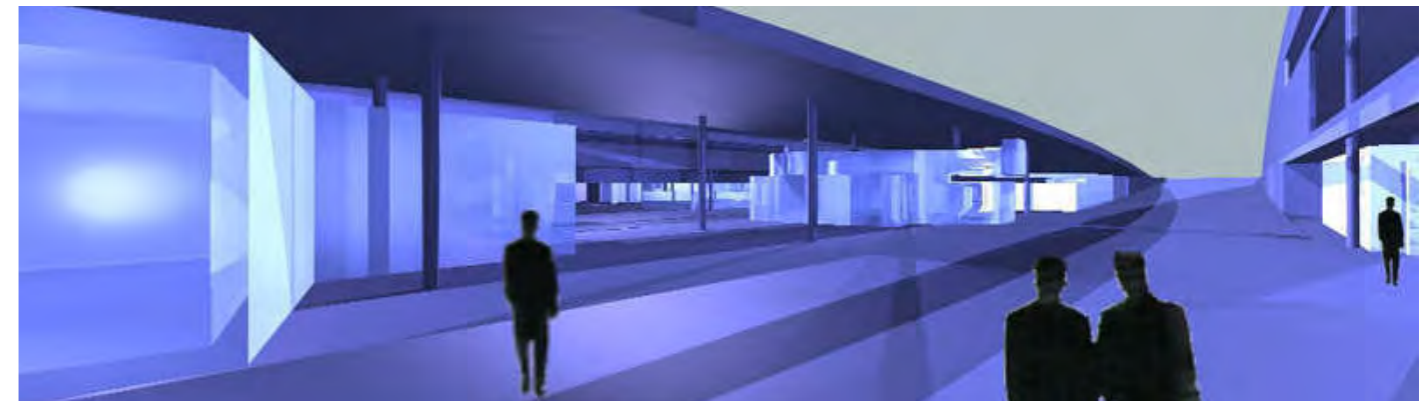
Year : 2000  
Sector : mixed-use  
Partner: Marco De Annuntis  
Client: Municipality  
Surface: 40.000 m<sup>2</sup>  
Budget: € 50.000.000

Activity: Preliminary design

*International Competition Winner*

Phase: *Approved*

invention of public realm



# TEANO MEMORIAL

## ***Teano, Italy***

Year : 2010  
Sector : leisure  
Client: Italian Government  
Surface: 40.000 m<sup>2</sup>

Activity: Preliminary design

Phase: **Approved**

*A portion of the interior wall was exposed at  
100% Gravity - MARMO MACC Verona 2012  
as installation for Laboratorio Morseletto.*

**urbandesign**  
masterplanning

in the memory of the unification  
of italy



#### INFRASTRUCTURE | ARCHITECTURE

- High Speed Railways Station Tiburtina
- Platform Canopy Tiburtina
- Subway Line D
- Termini railways station\_extension

#### RESIDENTIAL

- Torrenova Park City
- Villa Giusy
- Villa Bocina
- Apartment & Offices

#### PUBLIC BUILDING

- S.Salvo\_New Theatre
- Mammuth Theatre
- Italian Pavilion - Expò 2015
- School & Offices PE
- Nursery school

#### SPORT & LEISURE

- Pavilion of memory
- Fitness pavilion

#### MIXED-USE

- Yenagoa Guardian Angel Gateway
- Al Hamed Center
- Bank of Punjab
- Ajman Tower
- Al Rahba Centre
- I-Tower

# architecturedesign

INFRASTRUCTURE | ARCHITECTURE

# HIGH SPEED RAILWAYS STATION TIBURTINA

Rome, Italy

Year : 2001/02  
Sector : transportation  
Partners : ABDR Architects, Proger Spa  
Client : FS Spa  
Budget: € 42 milion  
Surface: 10.000 m<sup>2</sup>

Activity: Concept and engineering design;  
Preliminary, detail and final design of suspended internal volumes

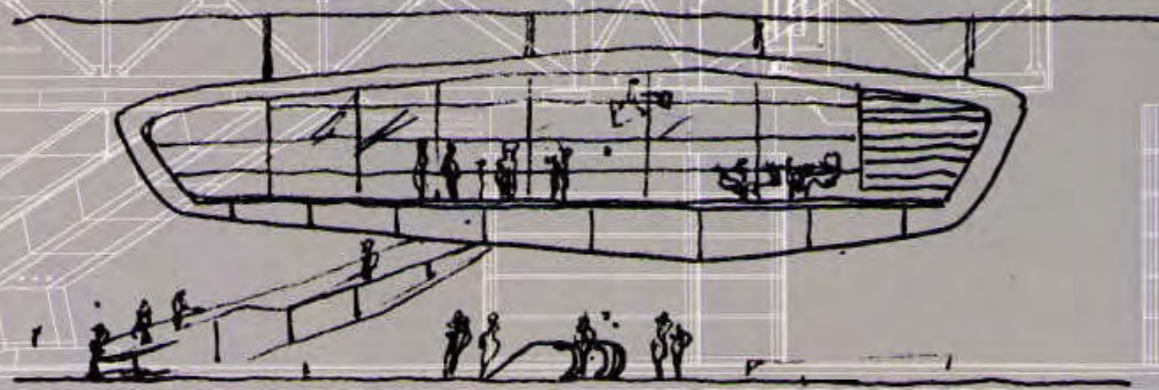
**International Competition Winner**  
Phase: **Completed**

The new Railways Station "Roma Tiburtina" is the station for the high speed trains, which connects Rome with Milan, Florence, Bologna and Naples in only few hours. ABDR Italian firm is the awarding winning firm which designed this new station. Kei\_en.enzocalabresedesignstudio worked in part-

nership with them and specifically designed the interior "suspended volume" of the station. The project consist in eight huge object suspended in the middle of the station hall. Their function is to contain some important services:

ticket office, bookshop, shops and vip lounge. The structure is thought as a boat, realized with ribs guyed buffered at sandwich.

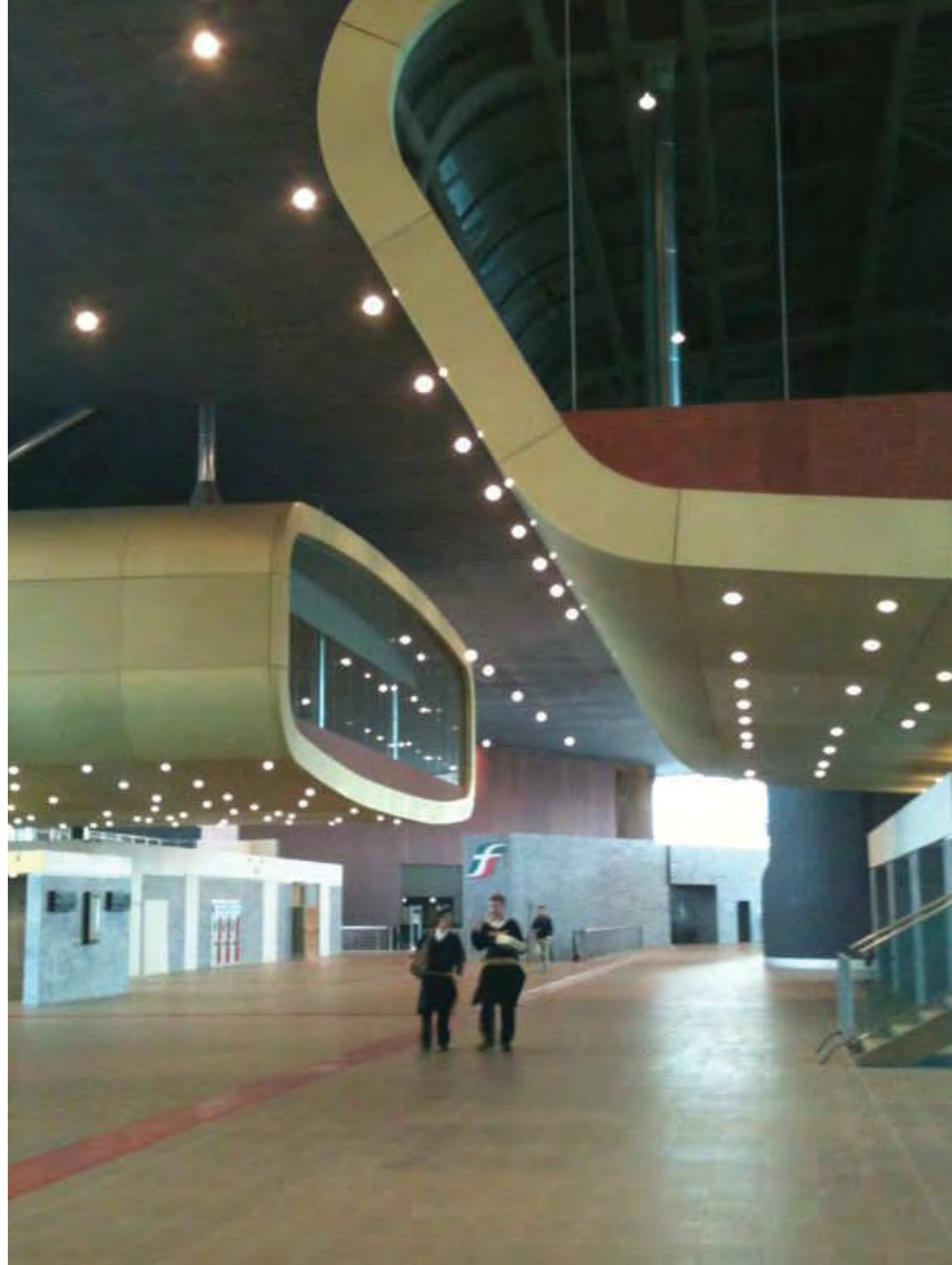
suspended volumes



architecturedesign  
infrastructure | architecture

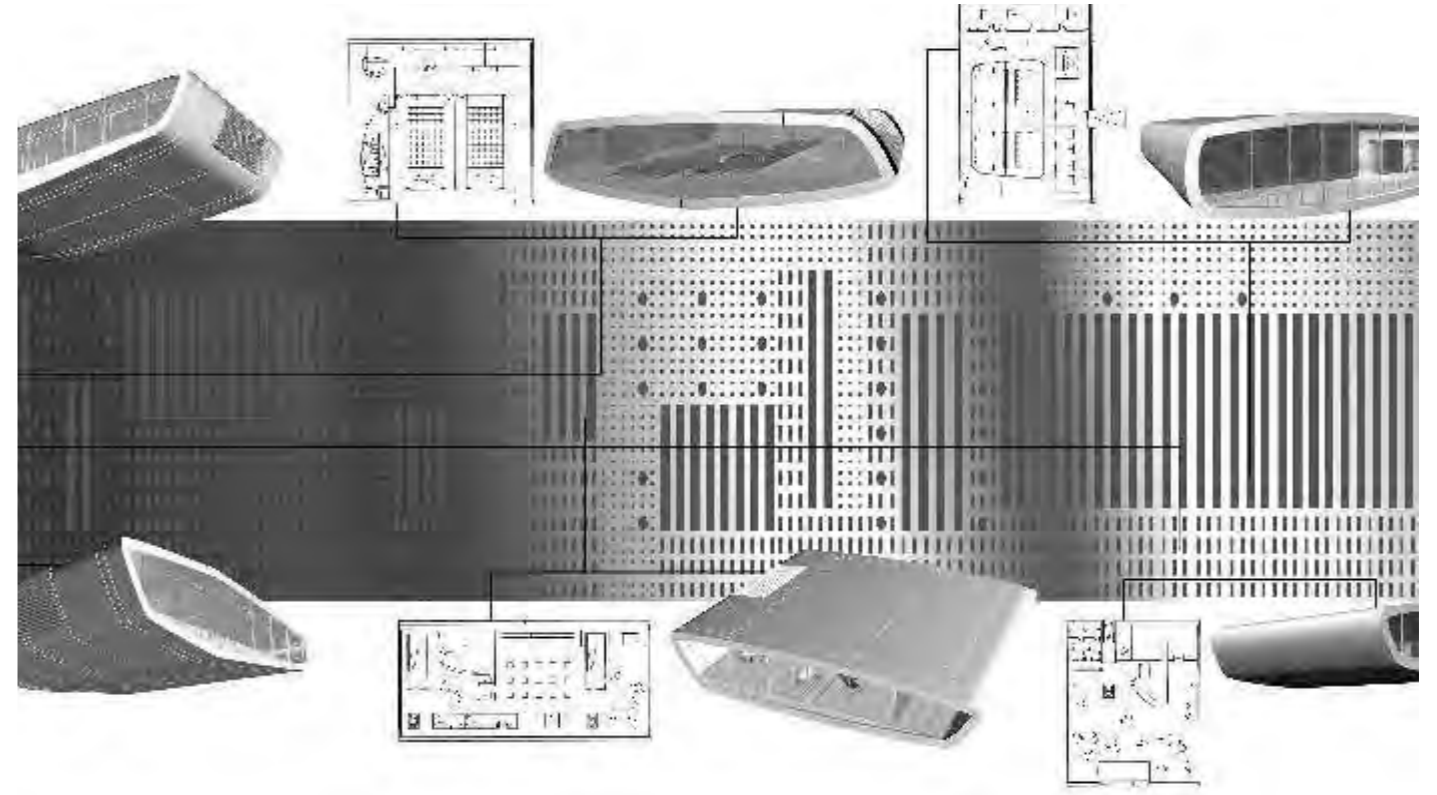
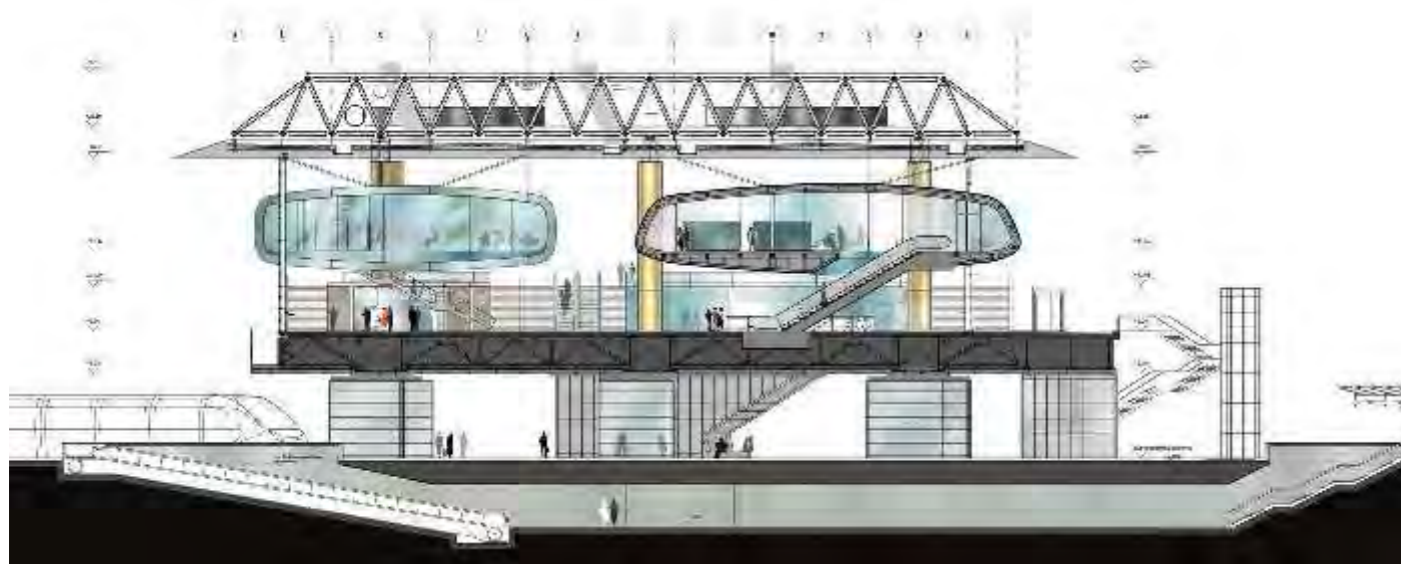


HIGH SPEED RAILWAYS STATION TIBURTINA



architecturedesign  
infrastructure | architecture





## PLATFORM CANOPY\_Tiburtina Rail Station

### Rome, Italy

Year : 1998

Sector : transportation

Client: Proger Spa, FS Spa

Budget: € 8 milion

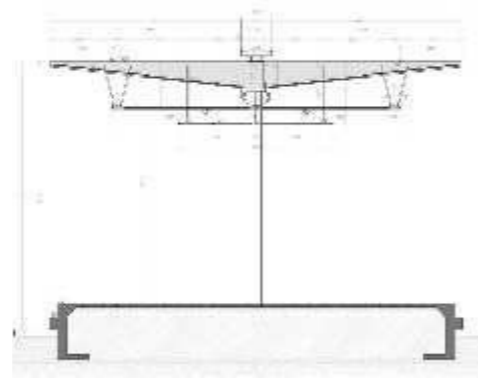
Activity: Preliminary, detail and final design

Phase: **Completed**

The Platform's Canopy of Tiburtina Rail Station in Rome is an anticipation of the project station itself. Indeed its embossed structure has been replicated conceptually for the large cover station.

The canopy is composed by a still structure that supports glass and perforated panels. This solution wants to answer to the needs of visibility for the new station, as well as rain and sun shelter. This light and complex structure accommodates signs, electrical and plumbing systems as well.

... the sense of light to the shape,  
distracts from the original expression



## SUBWAY LINE D

### Rome, Italy

Year : 2003  
Sector : transportation  
Partner : ABDR Studio  
Client : FS Spa  
Budget: € 8 milion

Activity: Preliminary and detail design

#### International competition, 2nd classificata

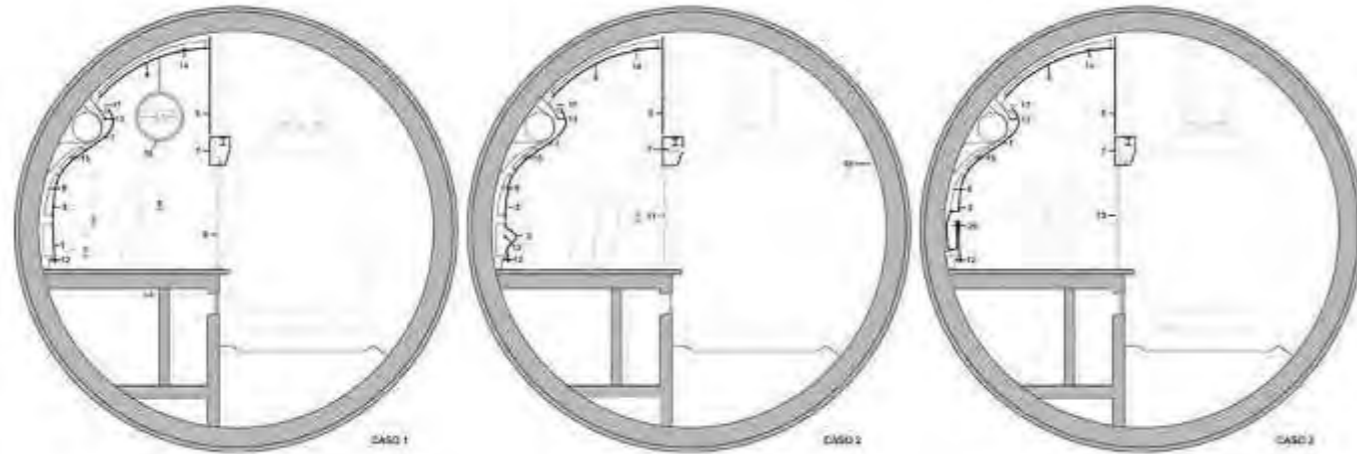
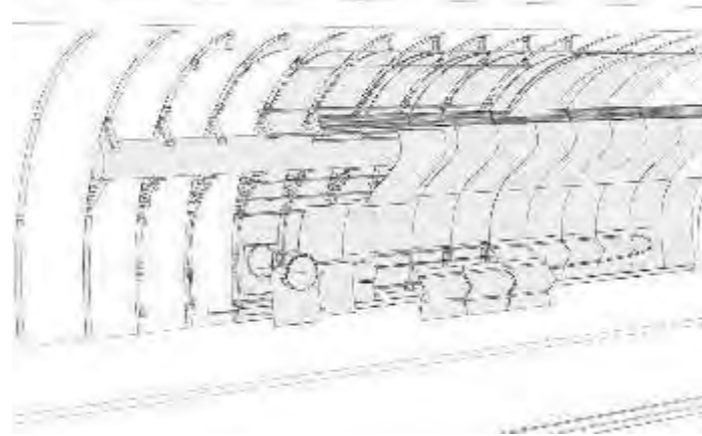
The project for new Subway Line D in Rome is designed by ABDR Studio, which commissioned to Kei\_en the interior design: platforms, underground accesses, gates and info point.

The idea was to create a fluid physical environment in relationship with flows, typical of a station.

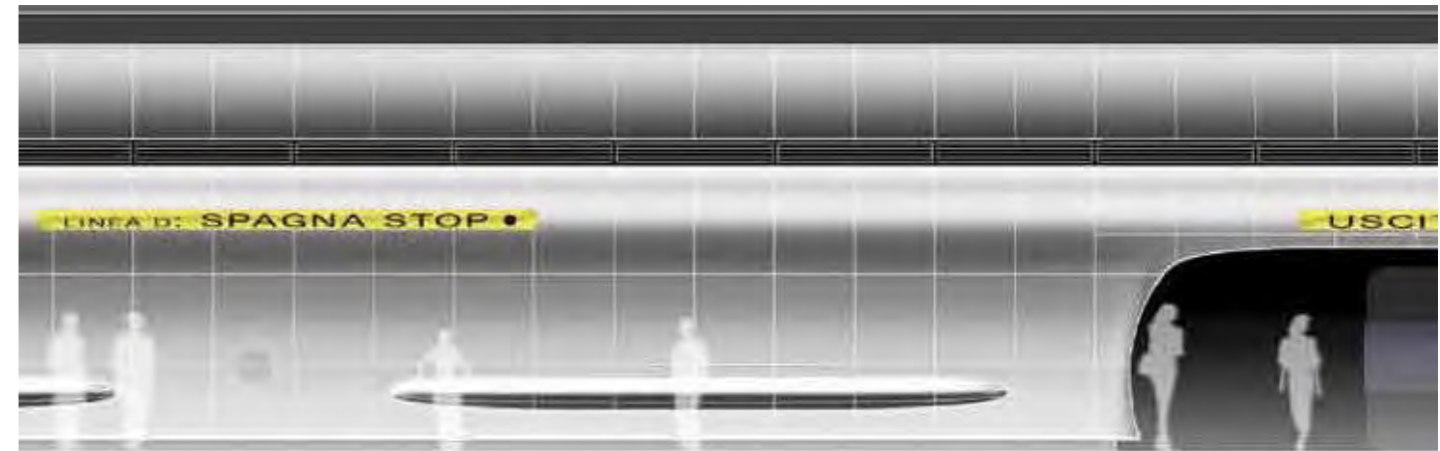
The tunnel is coated by undulated panels that covers the plant along the concave walls. Furthermore this kind of structure creates a sequence of sills in some points and garbage bins in others, directly integrated with the coated wall.

Between the platform and access, there is a parallelepiped structure, which was been thought as a shaped box containing services.

### modular movement



architecturedesign  
infrastructure | architecture



# TERMINI RAILWAYS STATION \_EXTENSION

**Rome, Italy**

Year : 2008

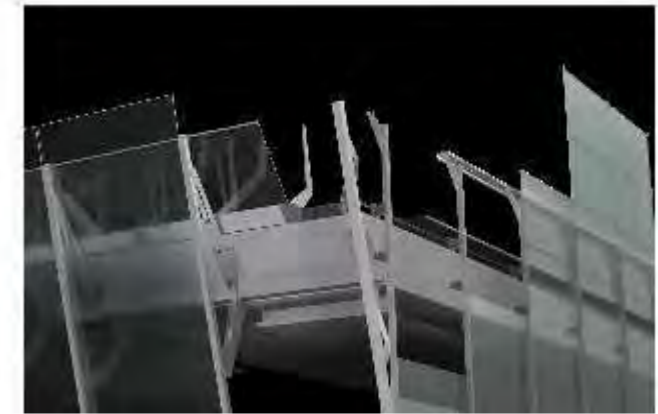
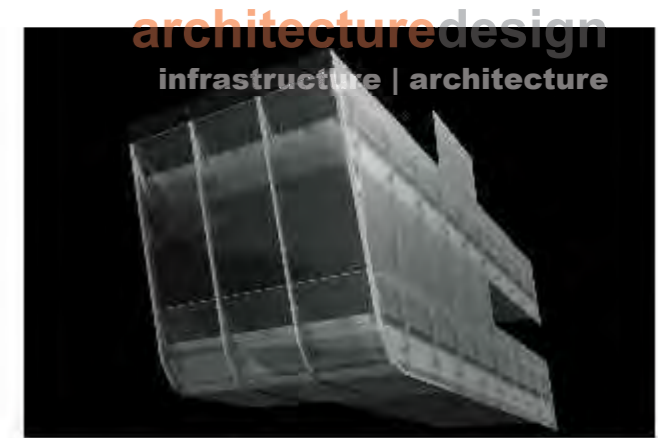
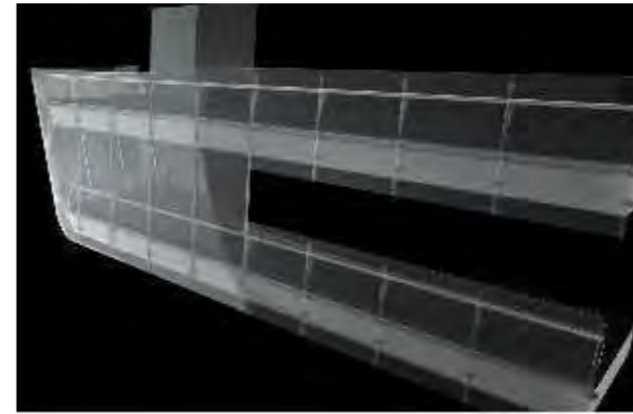
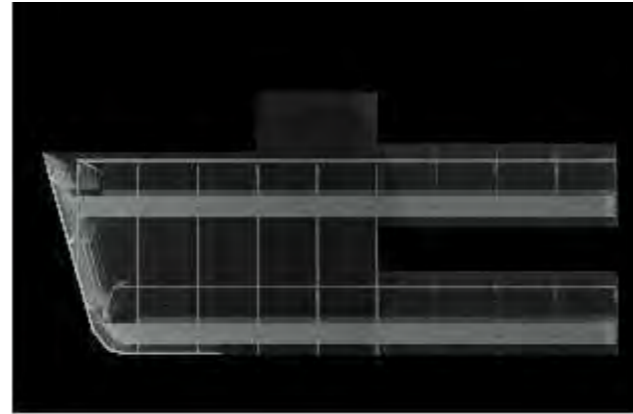
Sector : transportation

Design: Studio Fioravanti (preliminary design)

Client: Grandi Stazioni Spa, Studio Fioravanti

Budget: € 26 milion

Activity: Detail and final design



#### INFRASTRUCTURE | ARCHITECTURE

- High Speed Railways Station Tiburtina
- Platform Canopy Tiburtina
- Subway Line D
- Termini railways station\_extension

#### RESIDENTIAL

- Torrenova Park City
- Villa Giusy
- Villa Bocina
- Apartment & Offices

#### PUBLIC BUILDING

- S.Salvo\_New Theatre
- Mammuth Theatre
- Italian Pavilion - Expò 2015
- School & Offices PE
- Nursery school

#### SPORT & LEISURE

- Pavilion of memory
- Fitness pavilion

#### MIXED-USE

- Yenagoa Guardian Angel Gateway
- Al Hamed Center
- Bank of Punjab
- Ajman Tower
- Al Rahba Centre
- I-Tower

# architecturedesign

## RESIDENTIAL



# TORRENOVA PARK CITY

Rome, Italy

Year : 2010/11  
Sector :masterplanning / residential  
Client: Galotti Spa.  
Engineering: Starking  
Budget: € 140 milion

**International Competition Winner**  
Phase: **Underconstruction**

Activity: Preliminary, detail and final design;  
artistic direction

a green life project



Torrenova Residentail is the housing part of Torrenova Park City Master Plan.

The whole complex is articulated by 12 residential buildings, which have an underground level dedicated to garages and basements, and 6/7 levels

above ground. In addition there are a series of other buildings for services. In detail: commercial, sports and leisure, post office, GP, church, asylum and elementary school.

The project was created as whole, but actually

each single building is independent and goes to create the general landscape system. This strategy facilitates the phase realization, essential for this kind of intervention.



## VILLA GIUSY

### Latiano (BR), Italy

Year : 2004/10  
Sector : residential  
Client: Private  
Budget: € 500.000  
Surface: 300 m<sup>2</sup>

Phase: **Completed**

Activity: Preliminary, detail and final design

This project is a small residence built in Puglia, southern Italy, in a small town called Latiano. The project tries to tell a Mediterranean story, made of light, simple materials, and tradition. The house is on two levels, and is characterized by a fascinating double-height internal, which is a path to bridge that leads to one of the patios on the second level.

The building consists of a basement and two floors above the ground through an internal vertical distribution system. In the basement are located the tavern served by an internal staircase, a wine cellar, a tool shed, a pantry, a bathroom, the local hydro and thermal power plants, an area reserved for parking. This level is put into communication with the garden through an external ramp driveway directly connected to the municipal road on the north side.

At ground level, are localized environments for daytime activities: entry space that develops in double height, the large living space, kitchen-dining area, living area of the bathroom, and laundry, as well as the study. From the entry space, through a scale is possible to reach both the basements that the first level. At the first level, stands the large loft, connected to the bedroom through a walkway that overlooks the entrance area.

... designed by the sun



## VILLA BOCINA

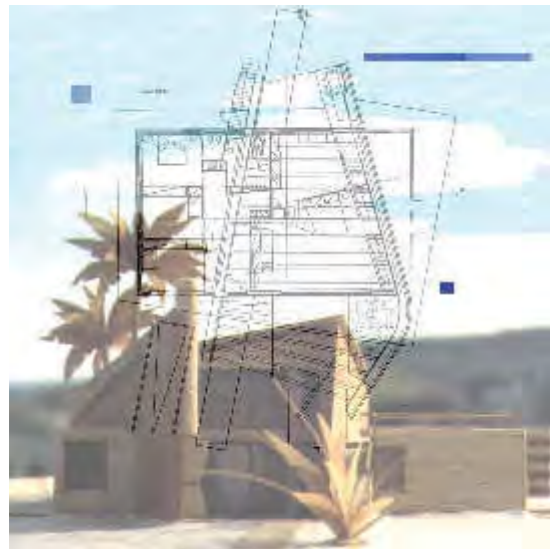
### Mesagne (BR), Italy

Year : 1995/2002  
Sector : residential  
Partner: Marco De Annuntis  
Client: Private  
Budget: € 800.000  
Surface: 400 m<sup>2</sup>

Phase: **Approved**

Activity: Preliminary, detail and final design

innovative tradition



## APARTMENTS & OFFICES

### Rome, Italy

Year : 2003/06  
Sector : mixed-use  
Client: Valeura Investimenti Srl  
Surface: 8.300 m<sup>2</sup>

Phase: **Approved**

Activity: Preliminary, detail and final design

urban living



#### INFRASTRUCTURE | ARCHITECTURE

- High Speed Railways Station Tiburtina
- Platform Canopy Tiburtina
- Subway Line D
- Termini railways station\_extension

#### RESIDENTIAL

- Torrenova Park City
- Villa Giusy
- Villa Bocina
- Apartment & Offices

#### PUBLIC BUILDING

- S.Salvo\_New Theatre
- Mammuth Theatre
- Italian Pavilion - Expò 2015
- School & Offices PE
- Nursery school

#### SPORT & LEISURE

- Pavilion of memory
- Fitness pavilion

#### MIXED-USE

- Yenagoa Guardian Angel Gateway
- Al Hamed Center
- Bank of Punjab
- Ajman Tower
- Al Rahba Centre
- I-Tower

# architecturedesign

## PUBLIC BUILDING



## SAN SALVO\_NEW THEATRE

### San Salvo (CH), Italy

Year : 2006  
Sector : public building  
Client: San Salvo Municipality  
Theatre Consultant: C.Ronconi  
Budget: € 2 million  
Surface: 1.600 m<sup>2</sup>

Activity: Preliminary, detail and final design

**National Competition Winner**  
Phase: **Underconstruction**

The new Theatre in San Salvo, Italy, was developed to answer new functional needs, thus new recording and rehearsal rooms, as well as deposit and changing room. Despite its untraditional layout, it is a flexible space which allows to host different show and events, in

fact the new scheme has been thought for contemporary events and traditional theatre as well. This proposal gave to the city a new space and a new idea for performing arts, as long as it works the all day and not only for public events.

performing, recording, living



architecturedesign  
public building



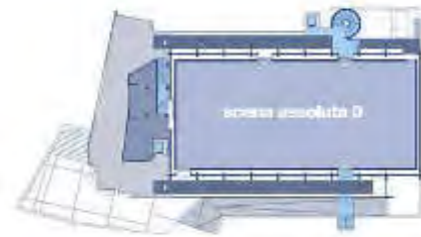
## MAMMUTH THEATRE

### Spoltore (PE), Italy

Year : 2004/06  
Sector : public building  
Client: Municipality  
Theatre Consultant: C.Ronconi  
Budget: € 2 milion  
Surface: 1.500 m<sup>2</sup>

Activity: Preliminary, detail and final design

Phase: **Approved**



rethink, reuse... re(l)novation



Mammuth is a refurbished building located in Spoltore, an interesting historic centre in the metropolitan area of Pescara, Italy. Originally it was a food-market and once it was relocated in another area, the Municipality of Spoltore decided to dedicate this space to a leisure centre, like a theatre.

Thus the design idea was more in terms of function than design in itself. It was a program of complex relationships: landscape, urban context, function and perception.

We wrapped the building with a new skin, and we organized the functional space with some volumes, inside and outside.



## ITALIAN PAVILION\_EXPO' 2015

### Milan, Italy

Year : 2013  
Sector : leisure  
Client: Expò 2015 Srl  
Partner: D'Urbino - Lomazzi  
Engineering: Mew  
Systems: Deems Italia  
Site Program: Four Architects  
Budget: € 40 milion

Activity: Preliminary design

International Competition

The masterplan for the Universal Exposition 2015 in Milan, with the theme "Feeding the Planet, Energy for Life", is structured by two main historic axes, Cardo e Decumano. The call for competition required to develop two different structures, one along the axe, denominat-ed Cardo Building, the other is the Pavilion Building in itself. Due to the nature of the exposition, both buildings ought be created as a temporary structure, that can be relocated somewhere else as research centre after the Expò. The Pavilion Building is compound by five elements: the central structure, eight pole which are balanced each other and inscribed in a circle; modular floors attached to the main structure throughout structural ring to the main structure; the services block where are located lifts, stairs, toilets and others; the façade. This last element express the recycle concept of the building. In fact it is compound by a double skin: the first is a framed glass, the second is an inflatable structure. The latter is made by recycled glass bottles, converted to polyester. Once the pavilion will change destination, then its second skin, this material will be recycled again for shoppers. The Cardo Building, has the same logic in terms of compounded structure which can be reassembled later for a different use. The steal structure is wrapped by an hybrid wall plug: panels in wood, glass / wood, steal / glass /wood.

architecturedesign  
public building



## SCHOOL & OFFICE

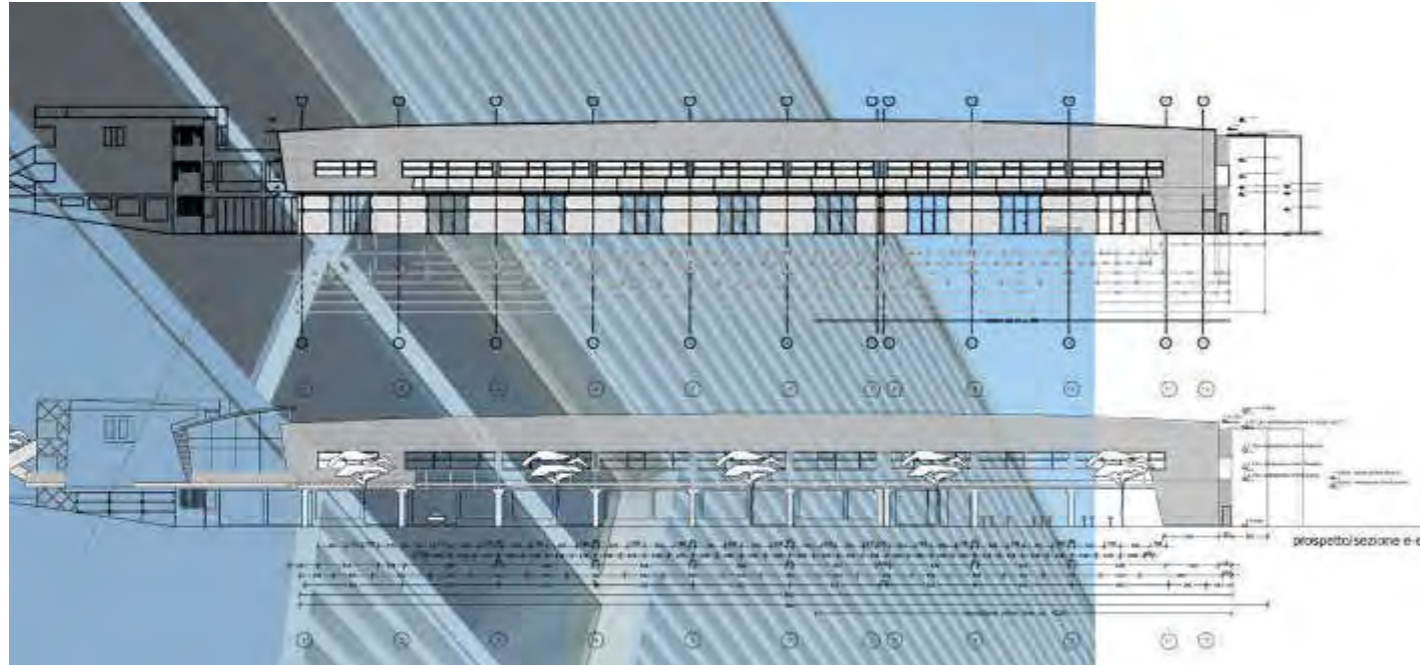
### *Pescara, Italy*

Year : 2002  
Sector : public building  
Client: Alfaomega Srl  
Budget: € 1.5 milion  
Surface: 4.500 m<sup>2</sup>

**Phase: Completed**

Activity: Preliminary, detail and final design;  
construction supervision

a modifiable shed



# NURSERY SCHOOL

Rome, Italy

Year : 2010/11  
Sector : public building  
Client: Galotti Spa, Rome Municipality  
Engineering: Starking  
Budget: € 2 milion

International Competition Winner  
Phase: Underconstruction

Activity: Preliminary, detail and final design;  
artistic direction

The nursery school is located inside a wide system of organized green space. It is thought as relationship space among the whole Zoning Plan. The project defines the space dedicated to children's instruction and growth. The program is thought as

a sum of objects, a sort of big "lego" which host each distinct school's function and compounds the landscape. The simple shape and poetic, that feeds the formal suggestions linked to different volumes, are subsidiary of this certainty: to find a

plastic solution which express the relationship between ordinary and extraordinary, past and future, educative choice and normal relationship. Furthermore we thought that work with the theme of "play" would be the appropriate decision to built a school.

the children thinking



PROSPETT. OC. - Aut. 10/11



PROSPETT. OC. - Aut. 10/11

#### INFRASTRUCTURE | ARCHITECTURE

- High Speed Railways Station Tiburtina
- Platform Canopy Tiburtina
- Subway Line D
- Termini railways station\_extension

#### RESIDENTIAL

- Torrenova Park City
- Villa Giusy
- Villa Bocina
- Apartment & Offices

#### PUBLIC BUILDING

- S.Salvo\_New Theatre
- Mammuth Theatre
- Italian Pavilion - Expò 2015
- School & Offices PE
- Nursery school

#### SPORT & LEISURE

- Pavilion of memory
- Fitness pavilion

#### MIXED-USE

- Yenagoa Guardian Angel Gateway
- Al Hamed Center
- Bank of Punjab
- Ajman Tower
- Al Rahba Centre
- I-Tower

# architecturedesign

## SPORT & LEISURE



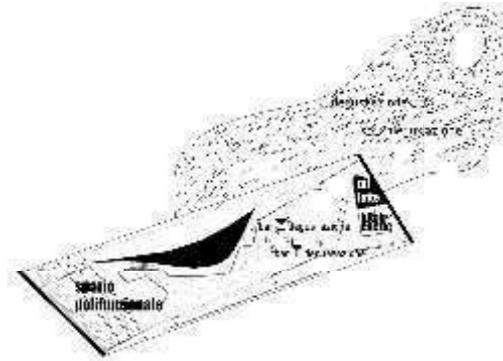
## PAVILION of MEMORY

**Pescara, Italy**

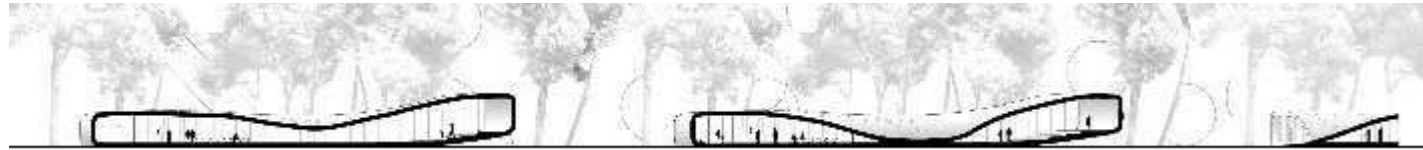
Year : 2007  
Sector : leisure  
Client: G.Pomilio  
Surface: 450 m<sup>2</sup>  
Budget: € 1.5 milion

Phase: **Approved**

Activity: Preliminary design



shaped by the memory



architecturedesign  
sport & leisure

## FITNESS PAVILION

**Wherever you need**

Year : 2013/2014  
Sector : sport  
Client: h2o REVOLUTION  
Surface: 1400 m<sup>2</sup>  
Budget: Confidential information  
Producer: Peraria srl\_ Vottignasco (CN) Italia

Phase: **Completed**

Activity: Preliminary, detail and final design

Itinerant pavilion for fitness and playful use



#### INFRASTRUCTURE | ARCHITECTURE

- High Speed Railways Station Tiburtina
- Platform Canopy Tiburtina
- Subway Line D
- Termini railways station\_extension

#### RESIDENTIAL

- Torrenova Park City
- Villa Giusy
- Villa Bocina
- Apartment & Offices

#### PUBLIC BUILDING

- S.Salvo\_New Theatre
- Mammuth Theatre
- Italian Pavilion - Expò 2015
- School & Offices PE
- Nursery school

#### SPORT & LEISURE

- Pavilion of memory
- Fitness pavilion

#### MIXED-USE

- Yenagoa Guardian Angel Gateway
- Al Hamed Center
- Bank of Punjab
- Ajman Tower
- Al Rahba Centre
- I-Tower

# architecturedesign

MIXED-USE

## YENAGOA GUARDIAN ANGEL GATEWAY

### Yenagoa, Nigeria

Year : 2007/10  
Sector : masterplanning / mixed-use  
Client: Baielsa State Government  
Partner: Nebeh E.Nwoka  
Structure: Whitby & Bird Ltd UK  
Management: CCEL Port Hartcourt  
Mecanical: Manens Intertecnica  
Budget: € 14 milion (1st phase)

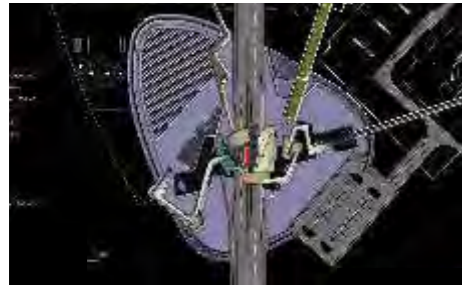
#### Phase: Underconstruction

Activity: Preliminary, detail and final design

The site area is located on the new express road to the city of Yenagoa, 800 metres from the junction of the Port Harcourt Warri federal road.

The site is well known as swamp area of Niger delta of Nigeria. The zone is full of water and strong vegetations which we observed that for a construction to take place in the site, land must have to be created and deforestation will take place before any construction. The gateway structure that the designers called the palace of Guardian Angel is structured in there vertical structures which are Concrete tower, Heavy sail and Light sail. These three vertical structures of different characters that converge at a heights, made to function differently and serves as materials for the supply of power energy. The crossover bridge of the highway is situated at the height of 7 metres from the ground with a terrace of about 600 square metres.

It's designed a practicable terrace at the top level of the tower. Two vertical elevator are situated at concrete tower.



a bioclimatic tower and planning



## AL HAMED CENTER

### Abu Dhabi, UAE

Year : 2005/6  
Sector : mixed-use  
Client: Al Hamed Group  
Engineering: Proger UAE  
Budget: € 80 milion  
Surface: 75.000 m<sup>2</sup>

Activity: Preliminary and detail design

#### Phase: Approved

Al Hamed Center is an high rise development in Abu Dhabi. It is mainly an office building for a single prestigious group, with services and some residential floors, to complete in terms of liveability this luxury development.

liavable mix



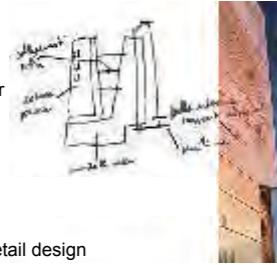
## BANK OF PUNJAB

### Lahore, Pakistan

Year : 2006/07  
 Sector : mixed-use  
 Client: Bank of Punjab  
 Management: ABA - Proger  
 Budget: \$ 71 million  
 Surface: 95.000 m<sup>2</sup>

Phase: **Approved**

Activity: Preliminary and detail design



## AJMAN TOWER

### Ajman, UAE

Year : 2006/07  
 Sector : mixed-use  
 Client: Al Shaed Group  
 Budget: € 60 million  
 Surface: 80.000 m<sup>2</sup>

Phase: **Approved**

Ajman tower is an office tower located in Ajman, UAE. The creation process started from a single parallelepiped, modelled according to the desert wind. It is compounded by two main elements: a squared parallelepiped wrapped by a second glass skin, which goes higher two levels to give space, on the roof top, for a glasshouse.

In section there are three different sectors: the basement accommodates shops, bar and restaurant; the central part is for offices; the top is the greenhouse and works both as panorama view point of the city and for climate.



### model in the wind



## AL RHABA MALL

### Abu Dhabi, UAE

Year : 2005/6  
 Sector : retail  
 Client: Private  
 Engineering: Proger UAE  
 Budget: € 65 million  
 Surface: 40.000 m<sup>2</sup>

Activity: Preliminary and detail design

Phase: **Approved**

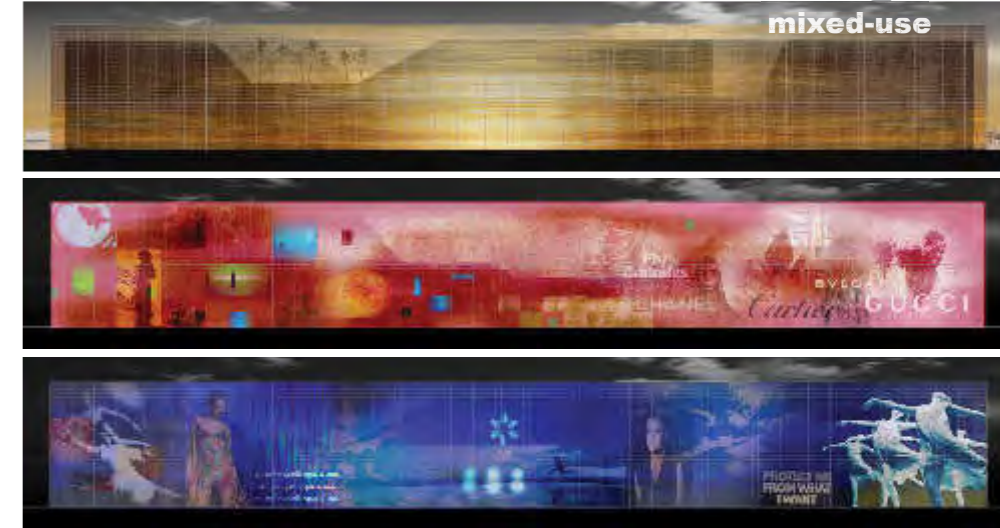
### empathich skin

The project is located at few miles from the centre of Abu Dhabi and it is characterized by his simple volume, dynamic skin and section. Indeed the parallelepiped shape, simple and flat in elevation, is rather very articulated in section in order to organize the internal space.

Shopping centre, multiplex cinema, bar and restaurant are disposed to create a game of "full and empty" giving to the top a sort of open space, which is conversely covered.

The whole block is wrapped by a second skin, translucent on the four elevations, that becomes

## architecture design mixed-use



huge screens retro-projected.

Al Rhaba Mall is then a carrier of infinite prospective that will change the around landscape, according to the film program and adverts. It is an example of when the container explain the content.



# I - TOWER

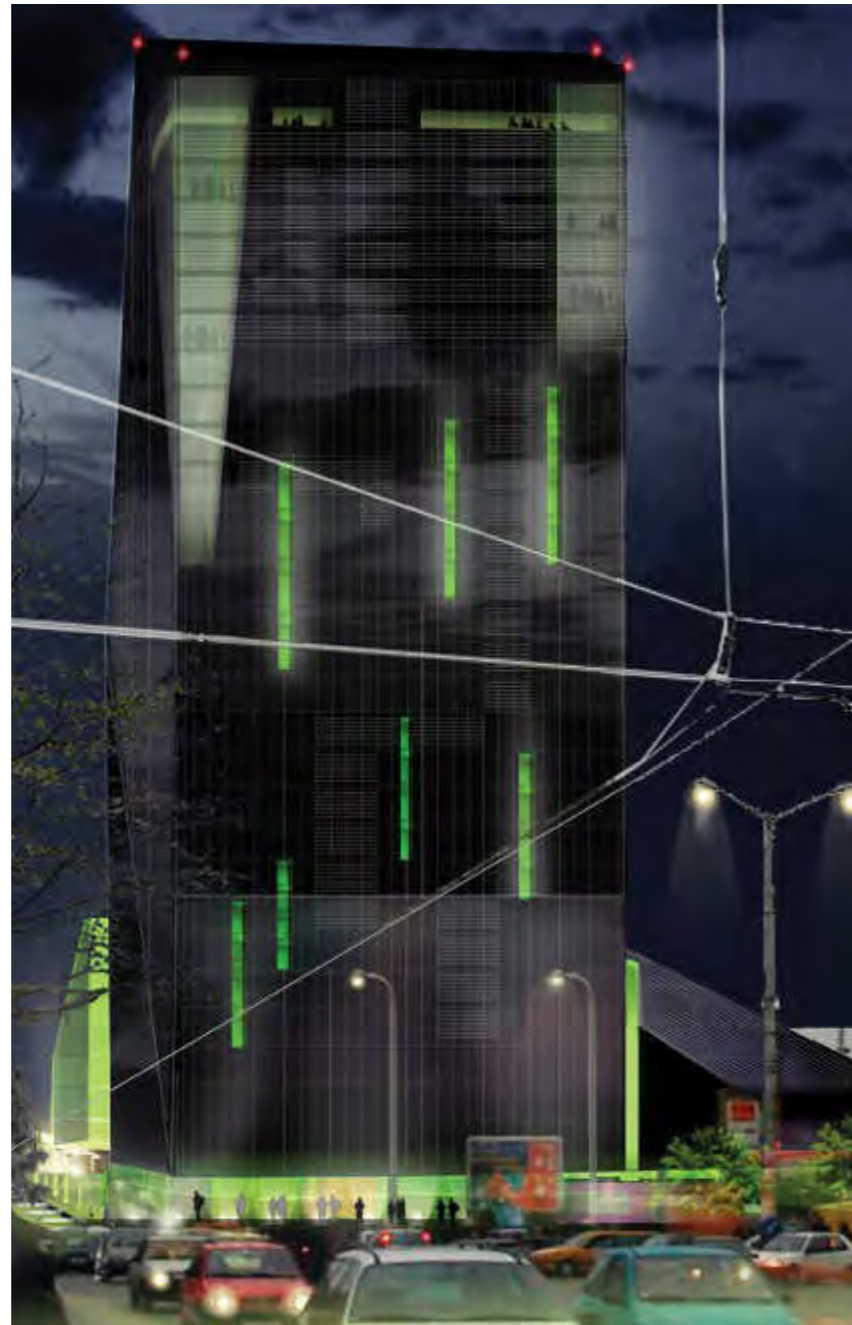
## Sofia, Bulgaria

Year : 2006/8  
Sector : mixed-use  
Client: Aleura Investment  
Partner: Jeko Thilev Architecture  
Structure: Whitby & Bird Ltd UK  
Mechanical: Mannes Intertecnica  
Vertical Mobility: Adrian Godwin  
Budget: € 85.000.000  
Surface: 84.000 m<sup>2</sup>

Activity: Preliminary and detail design

A Phase: **Underconstruction**

The Tower Project is located in the center of Sofia. It is a tower about 123 meters in height, with a total area of 80,000 m<sup>2</sup> of which 50,000 out of the ground. The tower starts from a base of 6 underground levels of 5,000 m<sup>2</sup> per floor, a large commercial podium, a 5-star hotel and a number of residences in the last 6 levels. Between the tower and the podium is a fascinating business interstitial space that dramatize the difference in height and contains all accesses to different functions. In 2011 he received the Building Permit, and probably will begin its construction.



I work, I meet, I sleep, I live



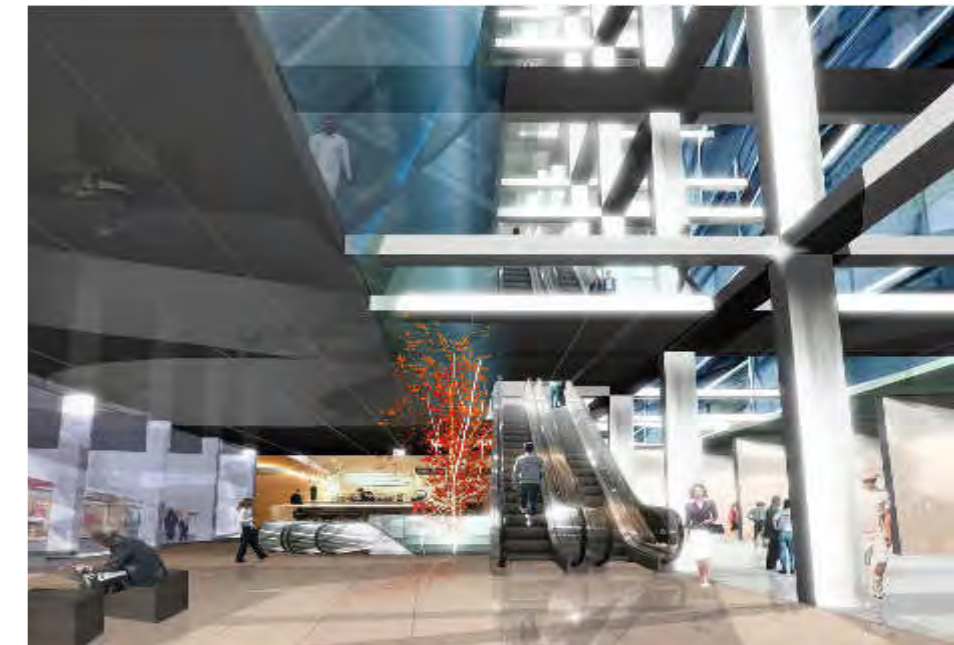
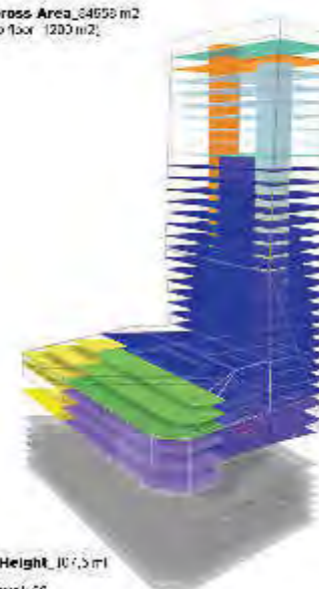
Total Area\_82421 m<sup>2</sup>

Total Void\_2633 m<sup>2</sup>

Total Gross Area\_84658 m<sup>2</sup>  
(extra floor\_1200 m<sup>2</sup>)

Tower Height\_107,5 m

Total level\_30



## INTERIOR DESIGN

- Private Club And Spa St.petersburg
- Private Villa, Sardinia
- Private Chalet St.moritz
- Private Apartment Moscow
- Private Apartments Chengdu
- Public Spaces - Lakhta Center
- Yacht Club Chengdu
- Gerard Depardieu - Clementine Igou Apartment
- Wine Bar 28/C
- Finnat Bank
- Hotel Milan
- Superstudio 13
- Villa Giusy
- Afa exposition
- Laser Wall
- Fontecal exposition

# interior**design**

INTERIOR DESIGN

## PRIVATE CLUB AND SPA

### ST. PETERSBURG RUSSIA

Year : 2015

Sector : interior design

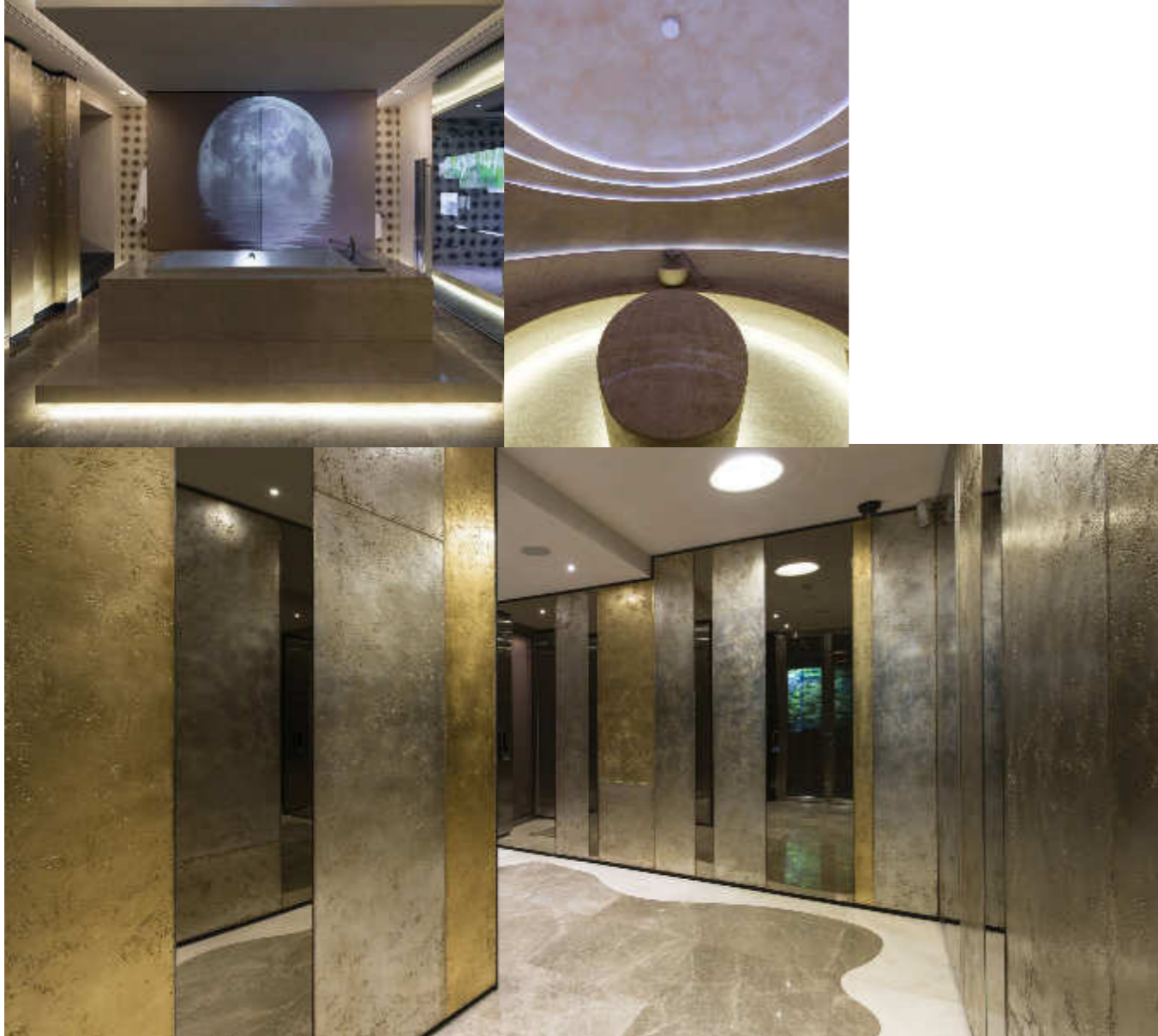
Client: Private

Surface: 1400 m2

Phase: Completed



**PRIVATE SPA**



## PUBLIC SPACES LAKHTA CENTER

### ST. PETERSBURG RUSSIA

Year : 2015

Sector : interior design

Client: Lahkta spa

Surface: 40000 m2

Phase: In progress

interiordesign  
interior design



**PUBLIC SPACES LAKHTA CENTER**



## YACHT CLUB

### CHENGDU, CHINA

Year : 2015  
Sector : interior design  
Client: Private  
Surface: 6500m2  
Phase: in progress

interiordesign  
interior design



**YACHT CLUB**



# YACHT CLUB



## VILLA IN SARDINIA

### *SARDINIA, Italy*

Year :2014  
Sector : interior design  
Client: Private  
Surface: 1300 m2  
Phase: Completed

interiordesign  
interior design



VILLA IN SARDINIA



## PRIVATE CHALET

### ST. MORITZ, SWITZERLAND

Year :2014

Sector : interior design

Client: Private

Surface: 1550 m2

Phase: Completed



**PRIVATE CHALET**



## PRIVATE APARTMENT MOSCOW

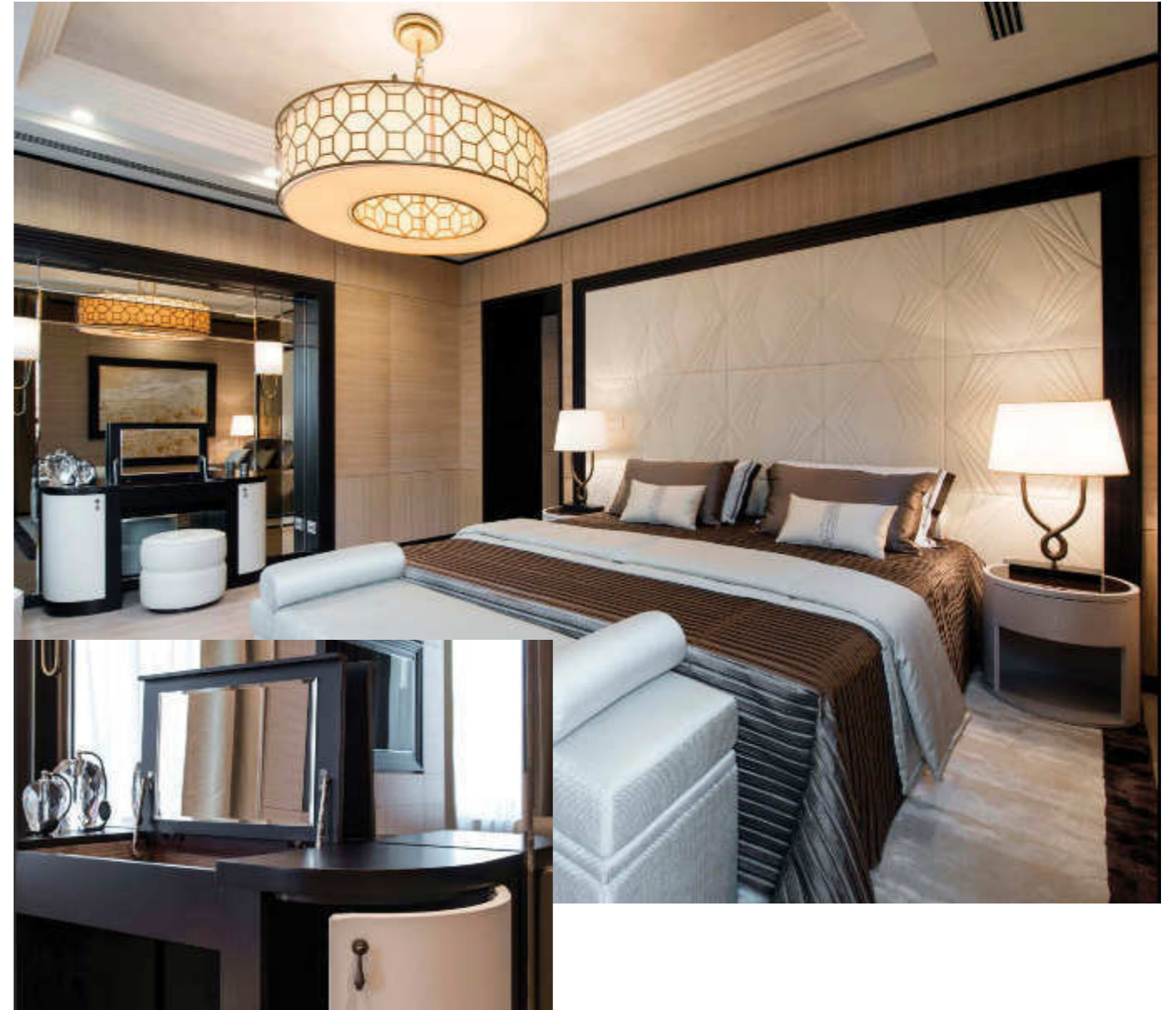
### MOSCOW, RUSSIA

Year : 2014  
Sector : interior design  
Client: Private  
Surface: 220 m2  
Phase: Completed

interiordesign  
interior design



**PRIVATE APARTMENT MOSCOW**



## PRIVATE APARTMENT

### CHENGDU, CHINA

Year : 2014

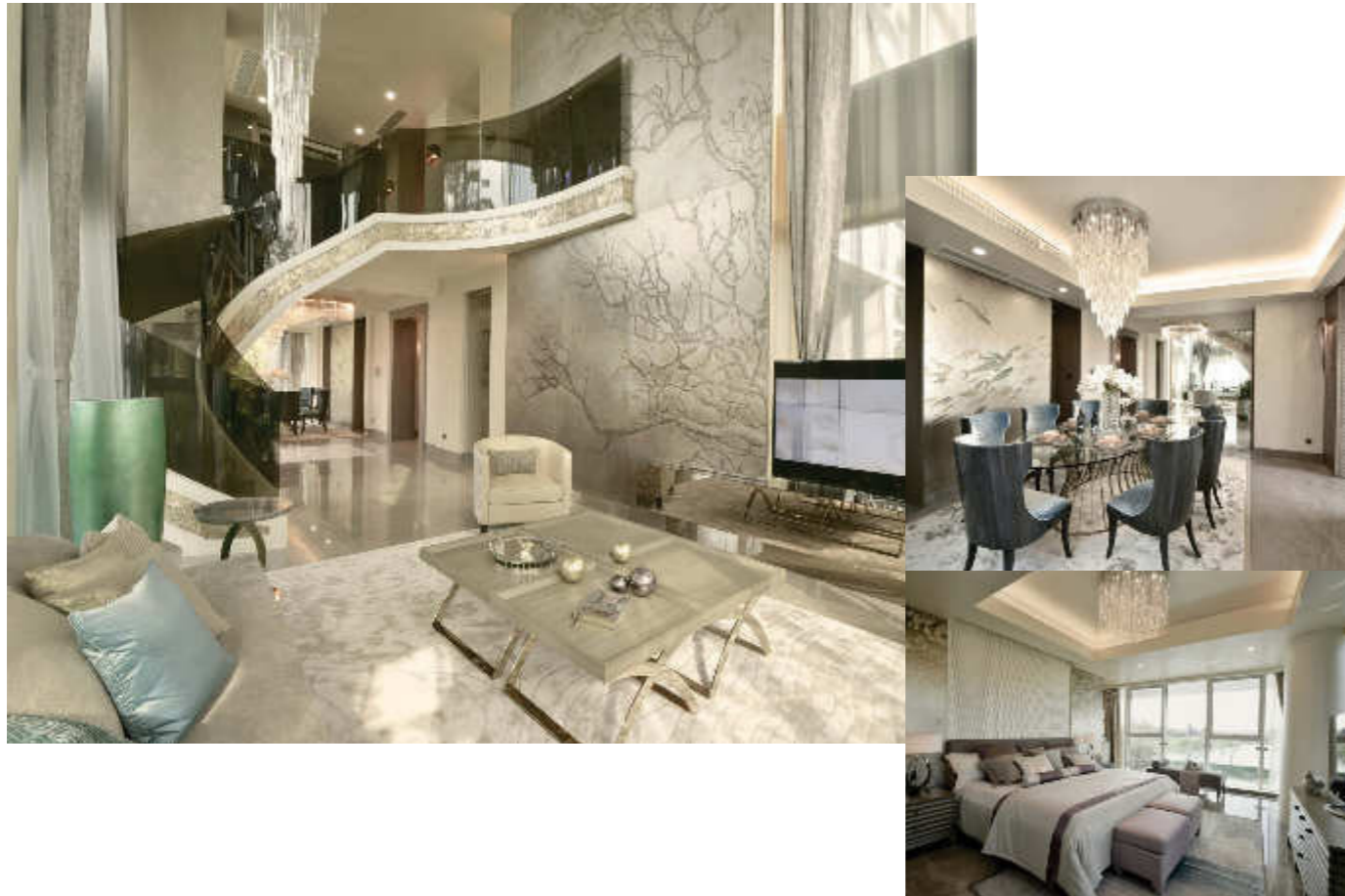
Sector : interior design

Client: Private

Surface: 800 m2

Phase: Completed

interiordesign  
interior design



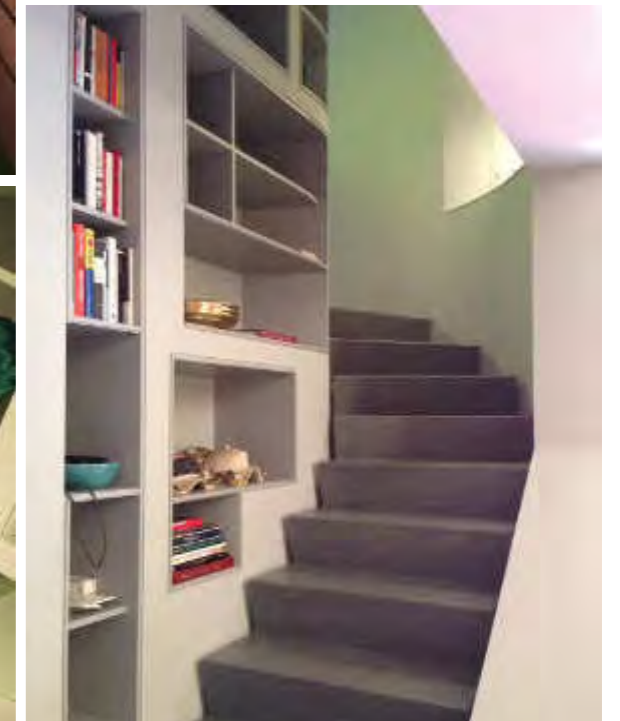
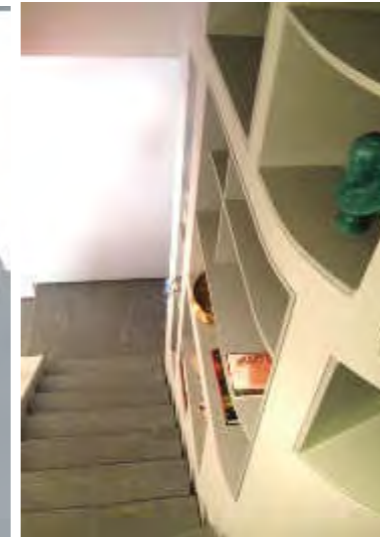
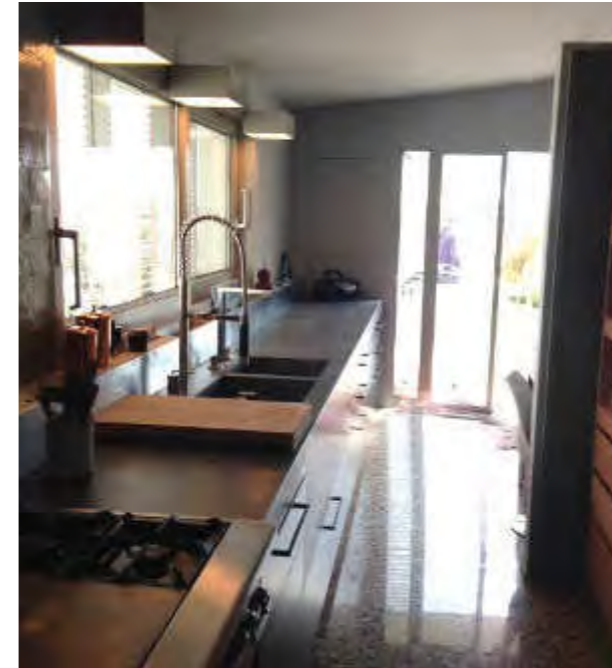
# GERARD DEPARDIEU - CLEMENTINE IGOU APARTMENT

## Lecce, Italy

Year : 2012  
Sector : interior design  
Client: Private  
Surface: 130 m2  
Phase: Completed

reading the space

interiordesign  
interior design



## WINE BAR 28/C

### Rome, Italy

Year : 2003  
Sector : interior design  
Client: private  
Budget: € 800.000  
Surface: 500 m<sup>2</sup>

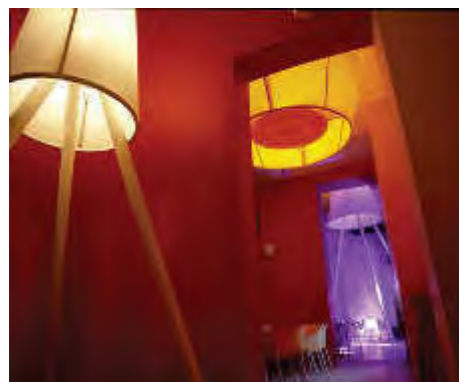
Activity: Preliminary, detail and final design;  
construction supervisor

Phase: **Completed**

The 28C Wine Bar is located inside the walls of the former slaughterhouse in Testaccio, Rome.

The space is divided into different rooms, all communicating.

The idea was to create a fascinating continuous introspection between one room and the other in order to make the space very dynamic. This theme has been enhanced with the introduction of large objects that can be seen whenever you are in any room. Inside the Wine Bar 28C everything is huge, especially the giant lamps, which are ubiquitous. They have been made in Cinecittà laboratories.



## FINNAT BANK OFFICE

### Rome, Italy

Year : 2006/07  
Sector : interior design  
Client: Finnat Bank  
Engineering: Proger Spa.  
Budget: € 1.4 million  
Surface: 800 m<sup>2</sup>

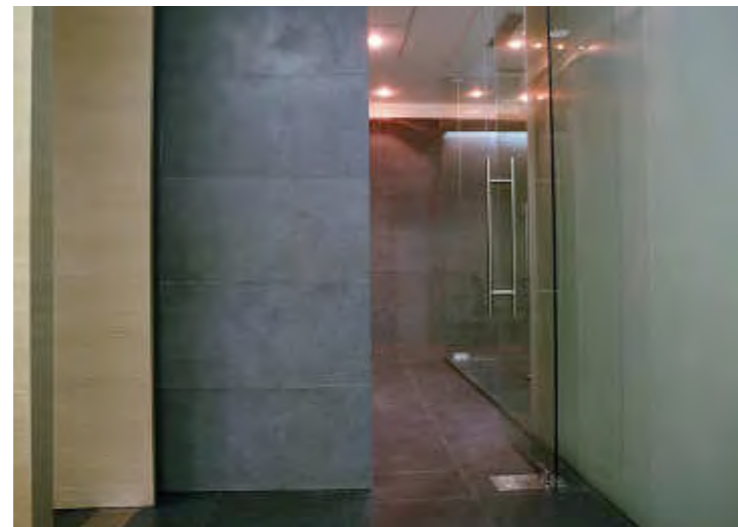
Activity: Preliminary, detail and final design

Phase: **Completed**

The Finnat Bank Headquarters is located into a historic building in Piazza del Gesù in Rome. The project upfront, confronted itself with conservation problems of the Ministry of Cultural Heritage. The solutions of main problems about plant design and walls, has been the base of the project idea.

The whole internal space, the different rooms and the distribution, had been reinvented by putting a new volume as a second internal façade. This façade draws, furnishes, distributes and lights the internal space as well as hides the 100% of plants. Façade's materials go from fibre cement slab waxed, to wood and crystal back lacquered.

### new internal volume



## HOTEL MILAN

### *Milan, Italy*

Year : 2005/06

Sector : interior design

Client: Inarcassa, Proger Spa

Budget: € 6.500.000

Surface: 6.500 m<sup>2</sup>

Activity: Preliminary, detail and final design

Phase: **Approved**

architectural conversion

interiordesign  
interior design



# SUPERSTUDIO 13

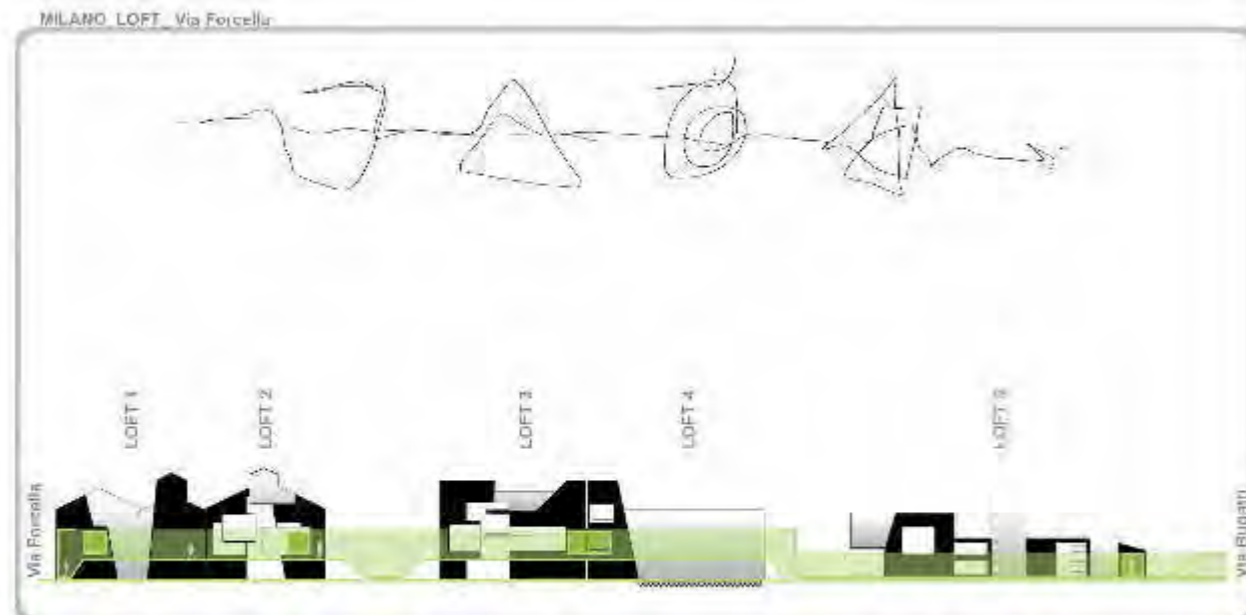
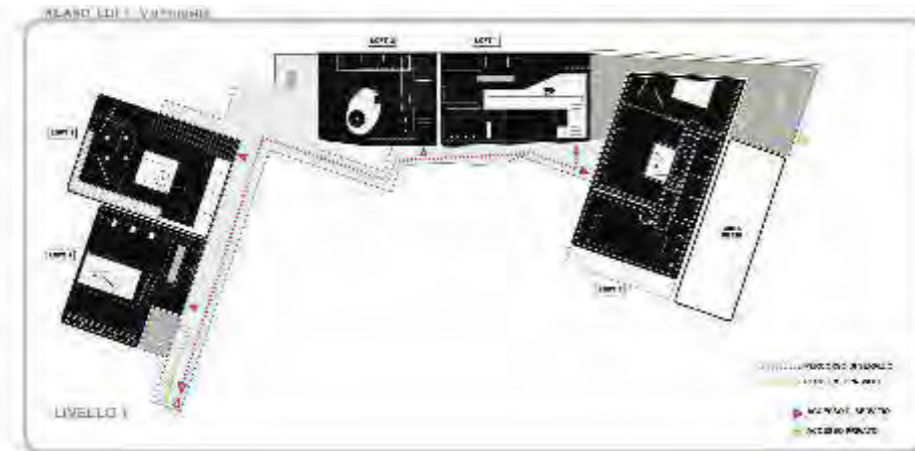
Milan, Italy

Year : 2008/09  
Sector : interior design  
Client: Valeura investimenti  
Budget: € 9.5 milion  
Surface: 4.500 m<sup>2</sup>

Activity: Preliminary design

Phase: **Approved**

Light.Green.Color.Water.Materials  
five themes for five spaces



interiordesign  
interior design



## VILLA GIUSY

### Latiano (BR), Italy

Year : 2004/10  
Sector : residential  
Client: Private  
Budget: € 500.000  
Surface: 300 m<sup>2</sup>

Phase: **Completed**

Activity: Preliminary, detail and final design

This project is a small residence built in Puglia, southern Italy, in a small town called Latiano. The project tries to tell a Mediterranean story, made of light, simple materials, and tradition. The house is on two levels, and is characterized by a fascinating double-height internal, which is a path to bridge that leads to one of the patios on the second level.

The building consists of a basement and two floors above the ground through an internal vertical distribution system. In the basement are located the tavern served by an internal staircase, a wine cellar, a tool shed, a pantry, a bathroom, the local hydro and thermal power plants, an area reserved for parking. This level is put into communication with the garden through an external ramp driveway directly connected to the municipal road on the north side.

At ground level, are localized environments for daytime activities: entry space that develops in double height, the large living space, kitchen-dining area, living area of the bathroom, and laundry, as well as the study. From the entry space, through a scale is possible to reach both the basements that the first level. At the first level, stands the large loft, connected to the bedroom through a walkway that overlooks the entrance area.



... designed by the sun

## AFA EXPOSITION

### Milan, Italy

Year : 2002  
Sector : interior design  
Client: Afa Spa  
Surface: 500 m<sup>2</sup>  
Budget: € 200.000  
Site: Interclima Expò Italy

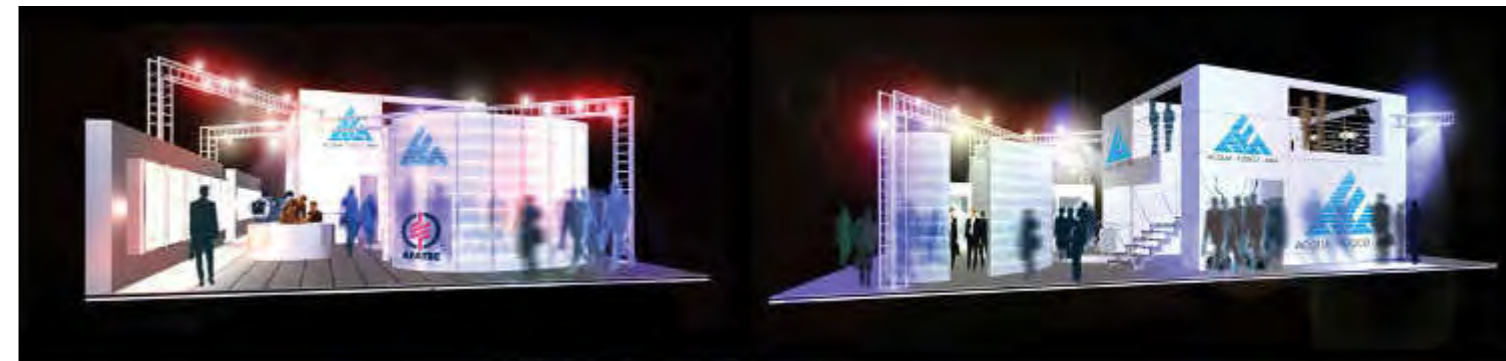
Activity: Preliminary, detail and final design

Phase: **Completed**

interiordesign

interior design

exhibit excellence



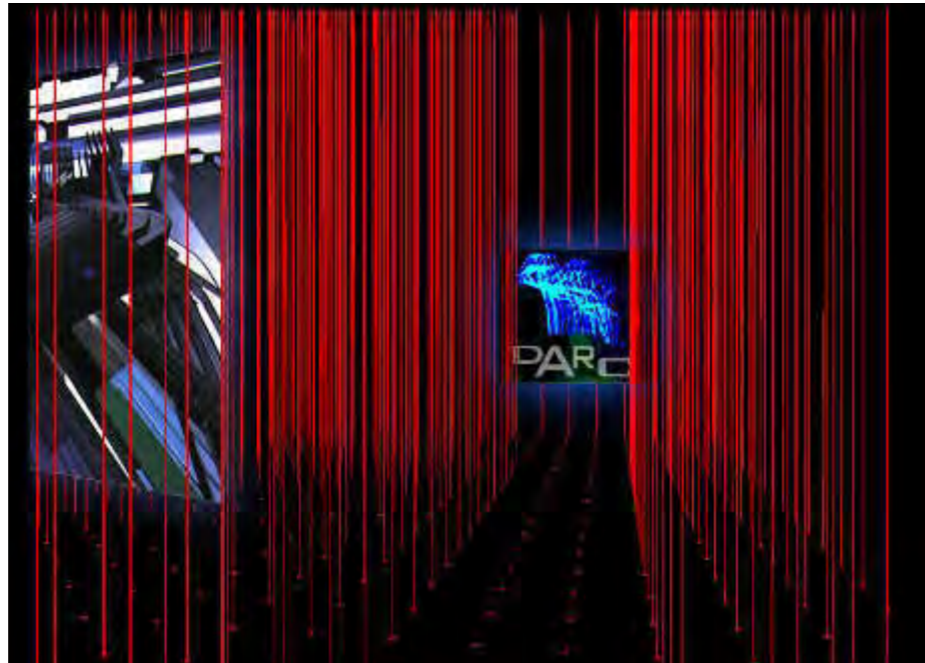
## LASER WALL\_Biennale Venezia

### Venice, Italy

Year : 2001  
Sector : interior design  
Client: Ministry of Cultural Heritage  
Budget: € 50.000  
Surface: 200 m<sup>2</sup>

*International Competition Winner (ex-equ)*

permeable lighting wall



## FONTECAL EXPOSITION

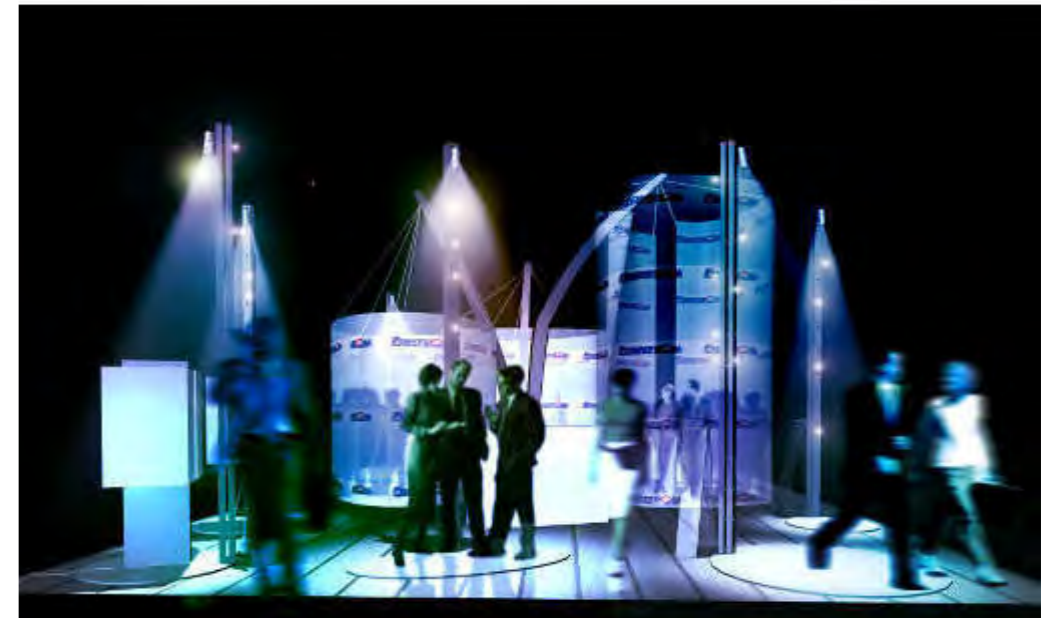
### Pescara, Milan (IT) Paris (FR) Madrid (ES)

Year : 2002  
Sector : interior design  
Client: Fontecal Spa  
Budget: € 200.000  
Surface: 500 m<sup>2</sup>  
Site: Interclima Expò Italy

Activity: Preliminary, detail and final design

Phase: **Completed**

functional fluxes settles themselves  
in the space... to colonizing it



## INDUSTRIAL DESIGN

- Sampei
- La Longuette
- Tor Off
- Onemore
- The Stone
- Groove
- Micky Mouse
- Zero Collection
- Tazebao Collection
- B:Room Collection
- Tina&Her Sisters
- Triplevase
- The Pebbles Collection
- B:Park
- I quattro amici
- Truck Design

# industrialdesign

INDUSTRIAL DESIGN

**SAMPEI**

**indoor & outdoor lamp**

Year : 2012

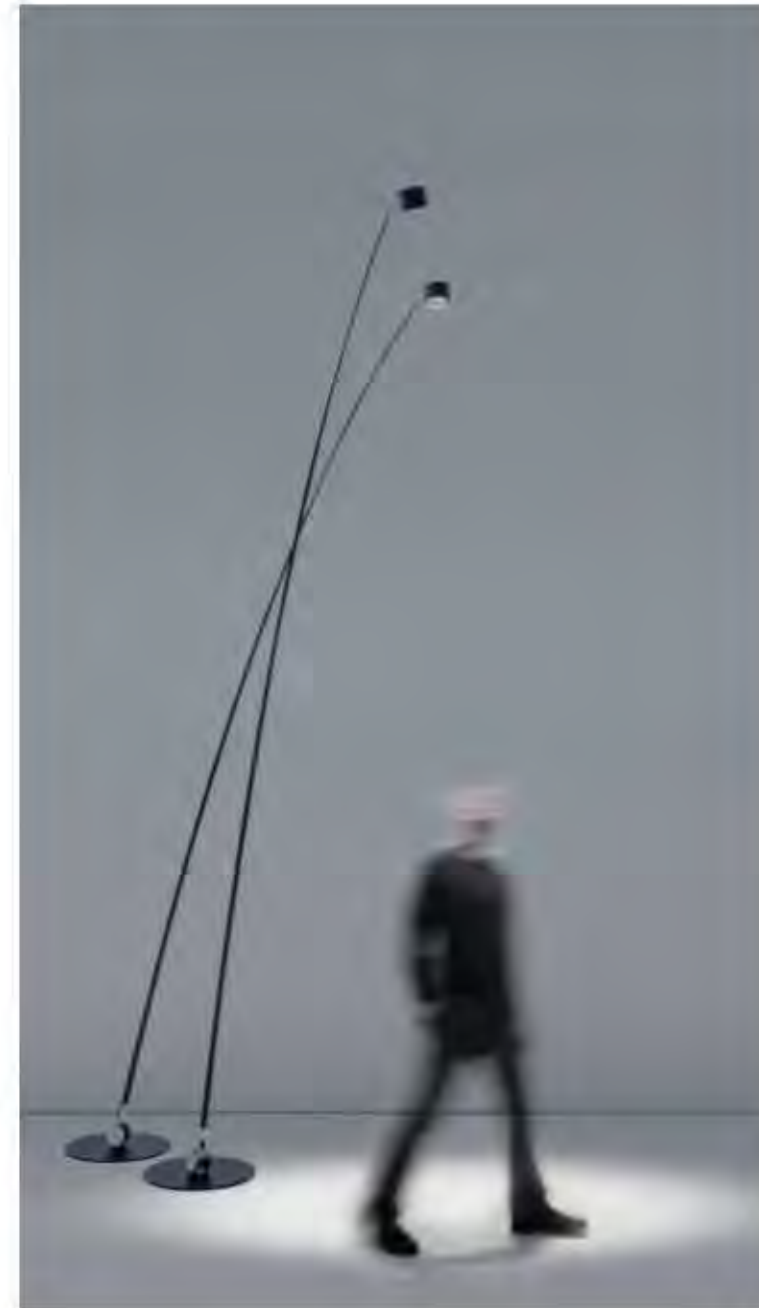
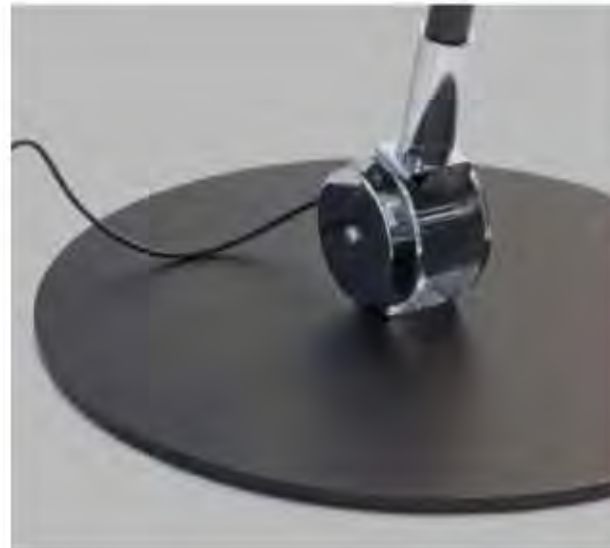
Sector : industrial design

Producer: Davide Groppi

*Elle Decor International Design Award 2012*  
*23rd "XXIII Compasso d'Oro" award (2014)*

Floor halogen / led lamp - adjustable reflector for in and outdoor spaces, the lamp is in two different size. Stem inclination 0° / 10° / 20° - metal - fiberglass.

... light dream



**industrialdesign**  
industrial design

## LA LONGUETTE

### *indoor lamp*

Year : 2009

Sector : industrial design

Producer: Touch Design

Floor lamp, halogen diffuse light  
metal - elastic fabric

... light dress

industrialdesign  
industrial design



## TOR OFF

### *washbasin*

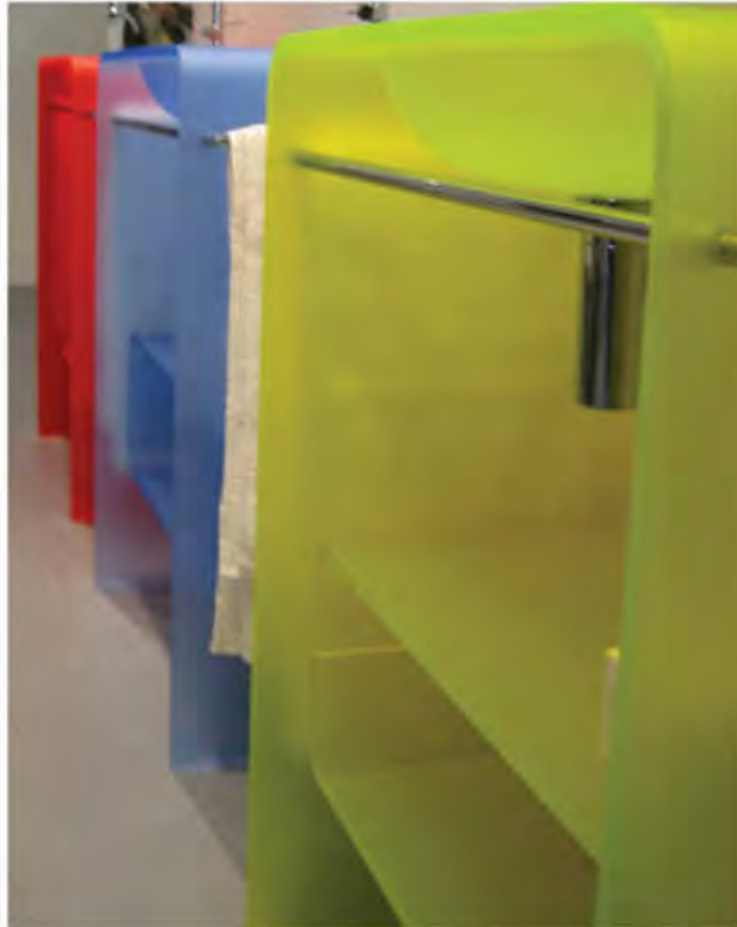
Year : 2006

Sector : industrial design

Producer: Rappeil

Free-standing washbasin made of thermoformed translucent acrylic, with towel holder and double shelf.

... color wash



industrialdesign  
industrial design

## ONEMORE

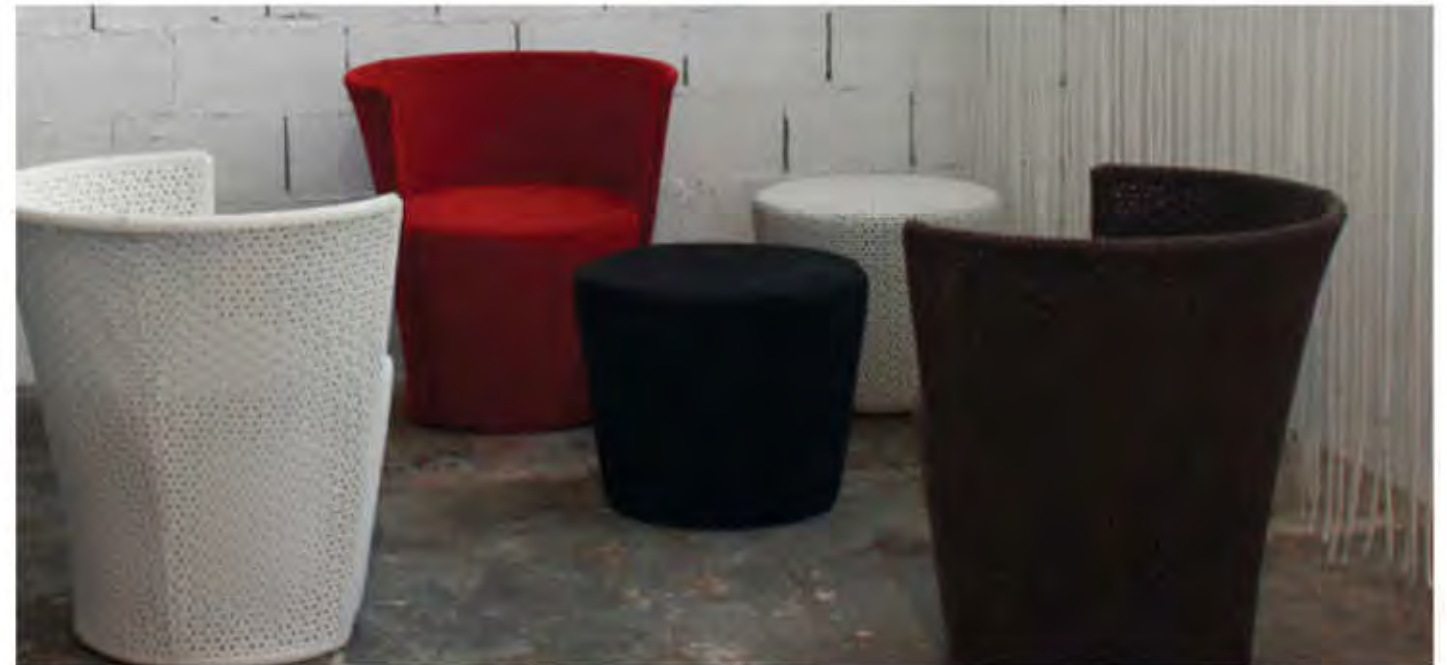
### chair

Year : 2010  
Sector : industrial design  
Producer: L'Abbate

Onemore is a small armchair compounded by a structure and by a pouf which can be used as individual seat or small table.  
The structure is in curved metal tube, painted; the encasement is made by perforated Alcantara fabric, cut by laser.

puff...table...armchair

industrialdesign  
industrial design

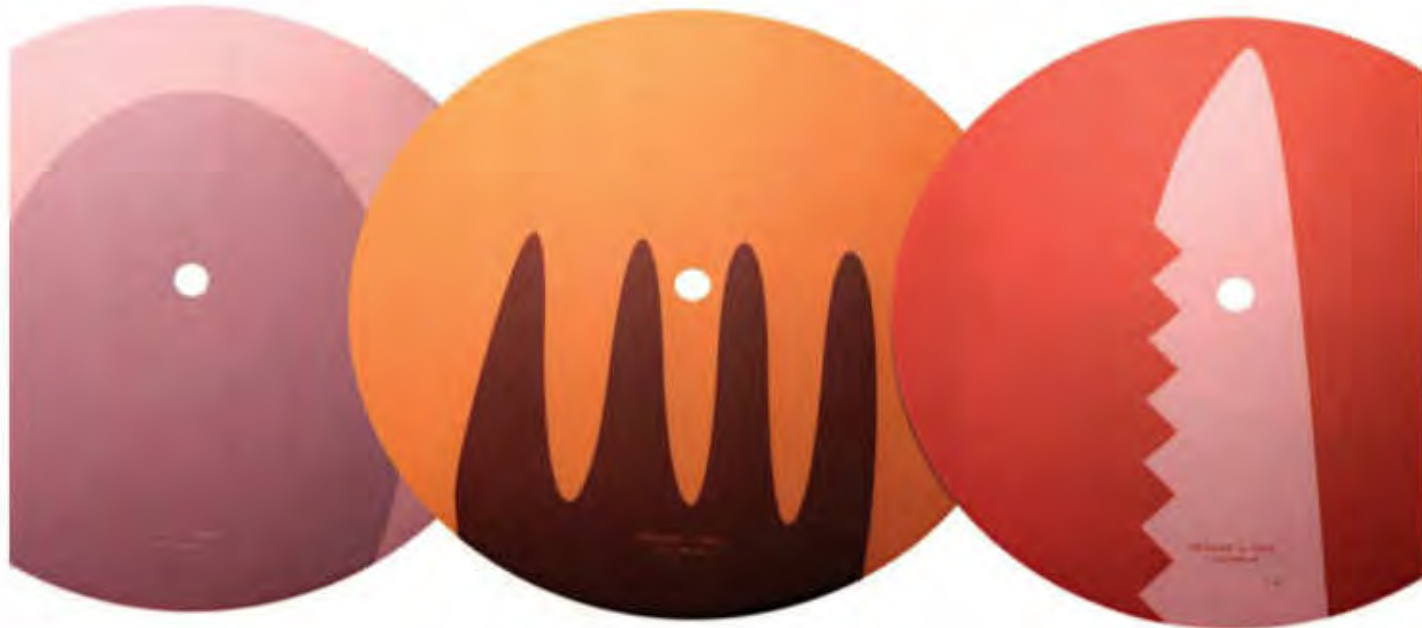


## GROOVE

### placement holder

Year : 2005/06  
Sector : industrial design  
Producer: Covo

place yourself



## MIKY MOUSE

### vaste container

Year : 2005/06  
Sector : industrial design  
Producer: Viceversa Ltd.  
Design: Enzo Calabrese

industrial design  
industrial design

feel the difference  
more is better than one



## ZERO COLLECTION

### outdoor furniture

Year : 2009

Sector : industrial design

Producer: Labbale

Frame in tubular steel with lacquer finish in various colours. Table top in white Carrara marble. Seat and back padded in non-deformable polyurethane foam with fabric covers.



industrial design  
industrial design



## TAZEBAO COLLECTION

### young bedroom

Year : 2005/06

Sector : industrial design

Producer: Lema

Design: Enzo Calabrese + Fabio Meliotta + Maddalena Martimucci

A colorful alphabet of shapes, designs, materials to be used creatively to design a space capable of changing along with its inhabitants. Tazebao is the program for children: elements designed as harmonic signs to make free compositions, original and comfortable. Available in all colors of the Lemacolortrend catalogue. Tazebao consists of beds, shelves, desks, bookcases, computers and all the accessories suitable for a child's bedroom, a comfortable environment for carefree moments.

smart, fun, energetic...young



industrial design  
industrial design

## B:ROOM

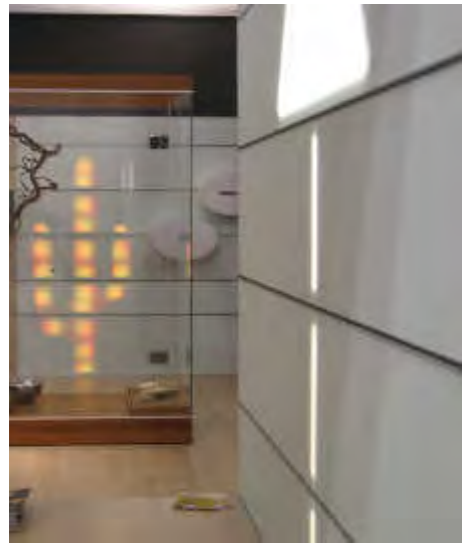
### bathroom

Year : 2005/06  
Sector : industrial design  
Producer: Listone Giordano  
Design: Enzo Calabrese + Fabio Meliota

**Nominated at "2007 Compasso d'Oro"  
from ADI Index Design**

project for wellness

Furnishing starting from the walls.  
Wood wall panelling onto which all the components can be fitted freely, from the roomy platform that invents a new walkway from which the tub surfaces, to the smallest of shelves.  
The principle of composition is entirely modular, and it is therefore possible to graduate the amount of space to be covered freely.



## TINA STONE SISTERS

### basin

Year : 2010

Sector : industrial design

Prototype: Laboratorio Morseletto

Sustainable project idea: "tina" is manufactured in "pietra di Vicenza"...an extraordinary material, warm and natural.  
"the tina stone sisters" recycle dust advancing from the stone processing.

recycle stone

industrialdesign  
industrial design



## B:PARK

### *parquet*

Year : 2008  
Sector : industrial design  
Producer: Listone Giordano  
Design: Enzo Calabrese + Fabio Meliota

## natural genius



## I QUATTRO AMICI

### *trolley*

Year : 1989  
Sector : Industrial design  
Design: Enzo Calabrese

**industrial**design  
industrial design

spatial alteration

	5 FEBBRAIO 2008 ORE 19.30
<b>NATURAL GENIUS</b>	Listone Giordano
	SPECIAL GUEST DANILÒ REA
	84
	LISTONEGIORDANO "IL PAVIMENTO IN LEGNO INCONTRA IL DESIGN"
	5 DESIGNER ENZO CALABRESE / MICHELE DE LUCCI / MASSIMO OSAGHINI / MATTEO NUNZIATI / MARCO TURIQUO RUCI
	PIRELLA GÖTTSCHE LOWE / VIA THRON DE FEVEL 3 / MILANO



