



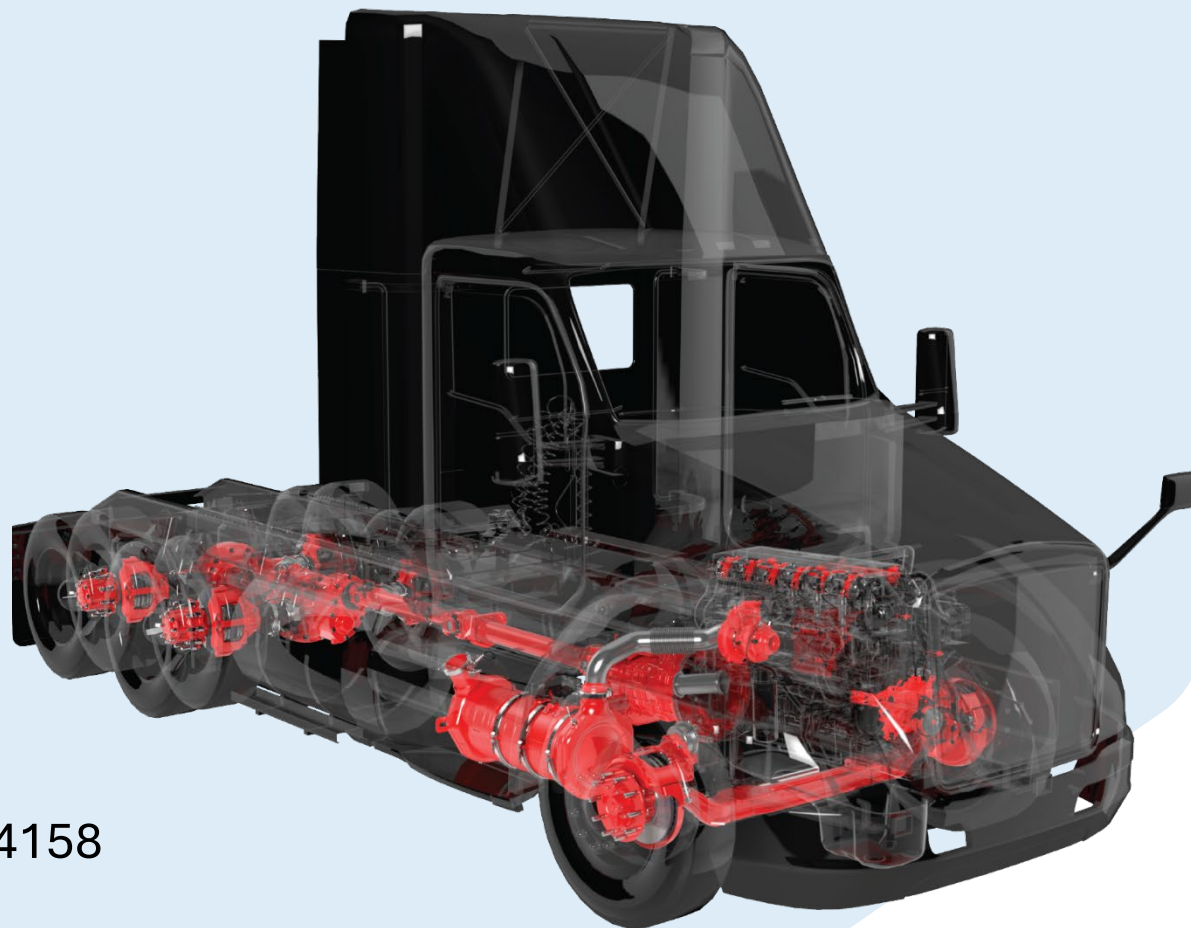
Redbox+

Meritor 160 Series Drive Axle

Peter Adair – Technical Training Manager

Thomas Barnes - District Manager, Cell – 763-300-4158

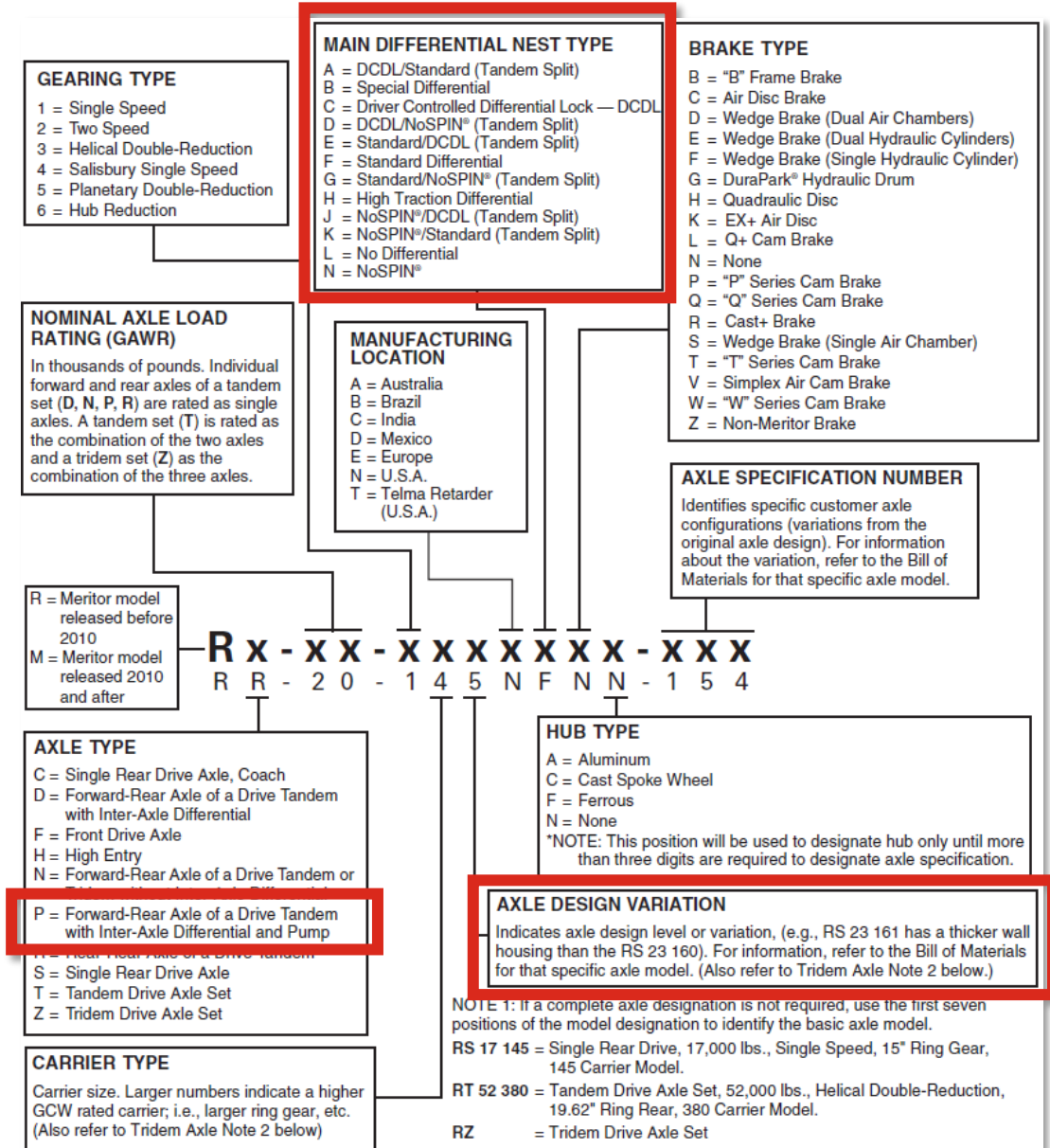
12/10/2025



Meritor 160 Series Drive Axle

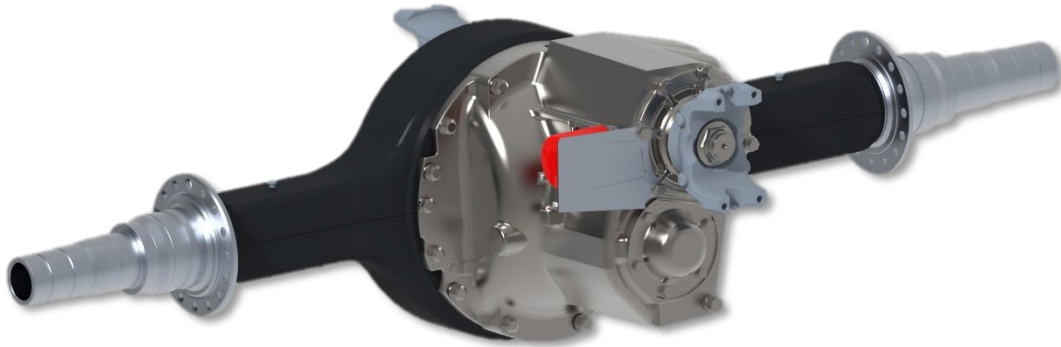
Example Model Number

RS23160NCNN410



Meritor 160 Series Drive Axle

Forward



Single/Rear



Meritor 160 Series Drive Axle

Tandem - Forward and a Single



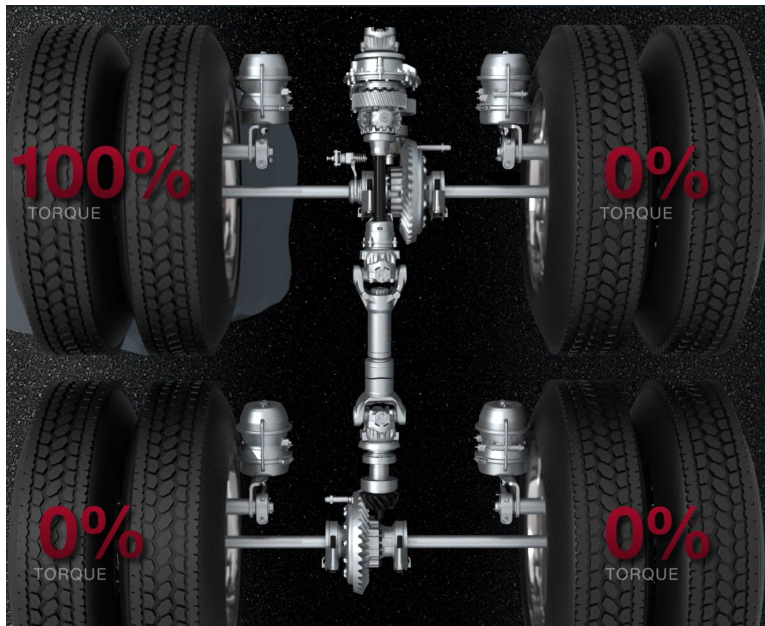
Meritor 160 Series Drive Axle

IAD – Inter-axle Differential Lock

- What is it?
- When is it needed?



Dis-engaged



Engaged



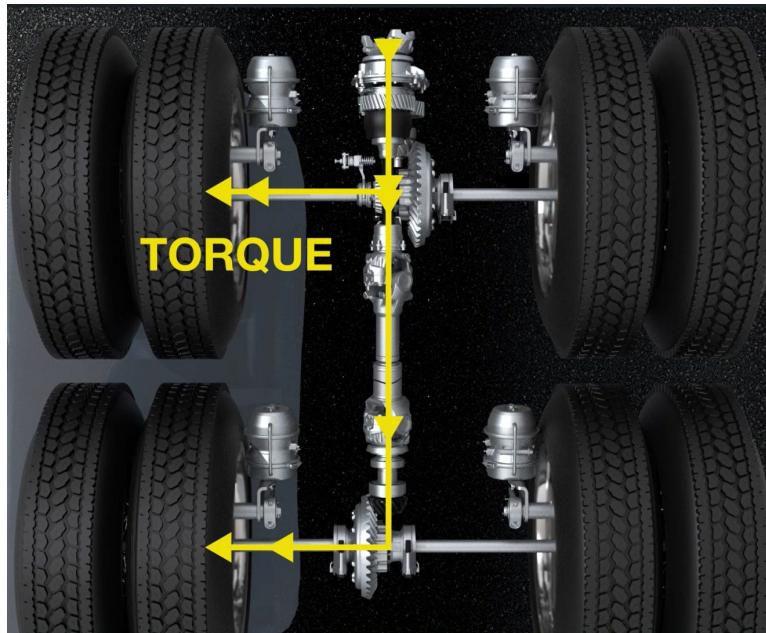
Meritor 160 Series Drive Axle

DCDL – Driver Controlled Differential Lock

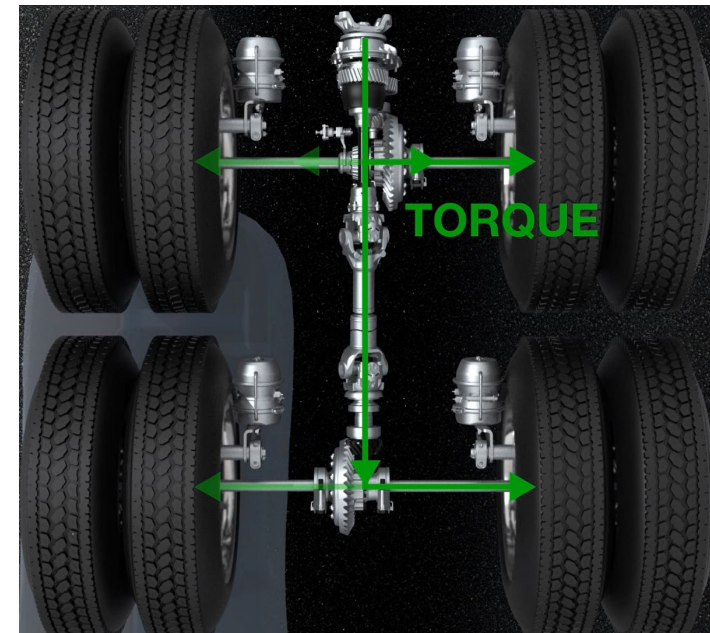
- What is it?
- When is it needed?



Dis-engaged



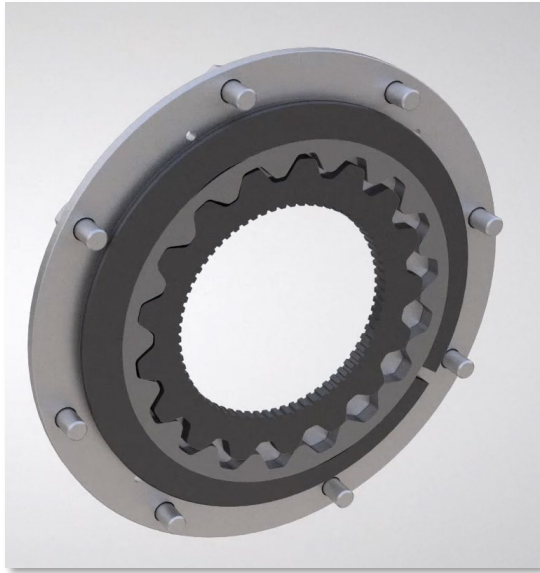
Engaged



Meritor 160 Series Drive Axle

Pump

- Why a pump?
- What does it do?



Meritor 160 Series Drive Axle

- Maintenance

Table Q: Oil Change Intervals and Specifications for All Rear Drive Axles

| Vocation or Vehicle Operation | Linehaul | Intercity Coach | City Delivery, School Bus, Fire Truck, Motorhome | Construction, Transit Bus, Refuse, Yard Tractor, Logging, Heavy Haul, Mining, Oil Field, Rescue |
|--|--|--|--|--|
| <u>Initial Oil Change</u> | Not required | Not required | Not required | Not required |
| <u>Check Oil Level</u> Add the correct type and amount of oil as required. | Every 25,000 miles (40 000 km), or the fleet maintenance interval, whichever comes first | Every 25,000 miles (40 000 km), or the fleet maintenance interval, whichever comes first | Every 10,000 miles (16 000 km), once a month, or the fleet maintenance interval, whichever comes first | Every 5,000 miles (8000 km), once a month, or the fleet maintenance interval, whichever comes first ¹ |
| <u>Petroleum-Based Oil</u> Change on axles with or without a pump and filter system. | Every 100,000 miles (160 000 km) or annually, whichever comes first | Every 100,000 miles (160 000 km) or annually, whichever comes first | Every 50,000 miles (80 000 km) or annually, whichever comes first | Every 25,000 miles (40 000 km) or annually, whichever comes first |
| <u>Synthetic Oil</u> Change on axles with or without a pump and filter system. ² | Every 500,000 miles (800 000 km), or every 4 years, whichever comes first | Every 250,000 miles (400 000 km), or every 4 years, whichever comes first | Every 250,000 miles (400 000 km), or every 3 years, whichever comes first | Every 100,000 miles (160 000 km), or every 2 years, whichever comes first ³ |
| <u>Filter Change</u> Change on axles with a pump and filter system. | Every 100,000 miles (160 000 km) | Every 100,000 miles (160 000 km) | Every 100,000 miles (160 000 km) | Every 100,000 miles (160 000 km) |

Meritor OnTrac – Warranty and Technical Support

EXPERT SERVICE PROFESSIONALS

OnTrac technicians are prepared to manage issues on a first-call basis. They receive over 40 hours per year of in-depth, hands-on product training to remain current on all Cummins-Meritor products.

When calling OnTrac, a technician can provide:

- Guidance on troubleshooting and diagnostics
- Warranty coverage validation
- Support for opening a new claim
- Guidance on repair strategies and repair times
- Service manuals, parts books and service literature

OnTrac does not only provide technical support. The same knowledgeable technician will assist with filing any applicable warranty claims and provide a warranty claim authorization number to help track the claim, expedite payment and make it a smooth experience for you.

ASSISTANCE WHEN YOU NEED IT

OnTrac technicians are available:

Monday – Friday, 7:30 a.m. to 10 p.m. (EST)

Saturdays, 9 a.m. to 6 p.m. (EST)

Contact OnTrac when a vehicle concern needs to be addressed quickly and efficiently. To help expedite the call, have the following information available:

- Complete 17-digit VIN
- Unit number (if applicable)
- In-service date
- Vocation
- Owner information
- Dealer code
- Component's model and serial number
- Mileage
- Work order number

Call Ontrac @ 866-668-7221

Meritor BullPen – www.meritorbullpen.com

The BullPen

User Name:

Password:

[Login](#)

[Don't have an account yet? Register here.](#)

[Forgot your password?](#)

[Contact support](#) [Powered by LogicBay](#)

Meritor Bullpen

Home Training Products Resources My Team Video Library Dashboards Videos Admin

BullPen LIVE

Training classes live and interactive covering a wide range of products used in most class 8 vehicles

[Click Here to learn more](#)

Meritor RUN WITH THE BULL

BullPen Updates

- [2025 Cummins BullPen VILT Schedule](#)
- [Meritor EX+LS Manual](#)
- [Meritor Just-in-Time Instructional Videos](#)
- [Watch the Meritor BullPen Training Promotional Video](#)
- [14X Drive Axle Maintenance Video: Lube Leak Detection & Repair](#)
- [Meritor on The Move Program Rules](#)

Products and Support

- [BRAKES](#)
- [TRAILERS](#)
- [DRIVELINES](#)
- [SUPPORT](#)
- [AXLES](#)

New Courses

Quick Links

- [Meritor Training Materials](#)

Training Summary

Development Plan

- [9 Overdue activities](#)
- [3 Due this month](#)
- [12 Incomplete activities](#)

Active Training

- [Active Courses](#)

ONLINE TRAINING

EMPLOYEE TRAINING

INSTRUCTOR-LED TRAINING

AFTERMARKET MOTM

LITERATURE ON DEMAND

INVITE COLLEAGUES

AFTERMARKET TRAINING

TRAINING MATERIALS

Peter Adair

Meritor 160 Series Drive Axle

Common Issues

- **Air contamination**
 - See air system issues
- **Seals**
 - Replace seals
- **Input Cage Leak**
 - Replace o-ring/s
- **Carrier to Housing**
 - In-service repair upgrade to gasket
 - TP20152 - [Link](#)

Documents

- [TP7824 Axle Specs](#)
- [TP20152 – Carrier to housing repair](#)
- [MM5L – Forward Axle Manual](#)
- [MM5A – Single or Rear Axle Manual](#)
- [TP9238 – IAD & DCDL Operations](#)

Q+A

