

OZ STAR COCKATOO SERIES 20FT FAMILY DOUBLE

Crafted using top-notch materials, the Oz Star Cockatoo Series 20ft Family Double is not only durable but also a breeze to manoeuvre and tow. With enough seating for up to four people, it's perfect for family outings, road trips with friends or solo travellers who crave exploration without compromising comfort.



TRUSTED QUALITY AUSSIE CARAVANS
FOR UNRIVALLED ADVENTURES

OZSTAR Cockatoo Series
20FT FAMILY DOUBLE

AUSTRALIA WIDE

Includes 12 months registration



KEY FEATURES



Marine Grade
Caravan Body



Water Tanks



Gas Hot
Water System



Diesel Heater



Air Conditioning



3000w Inverter



Solar Panels



Dual Front
Storage Boxes



Wireless
Reverse Camera



High-Density
Foam Mattresses



Queen Main Bed,
Top Bunk &
Bottom Bunk



Ensuite
Shower & Toilet



Call 1300 999 888



Locations in Sydney, Brisbane, Perth, Melbourne, and Adelaide



info@ozstarcavans.com.au

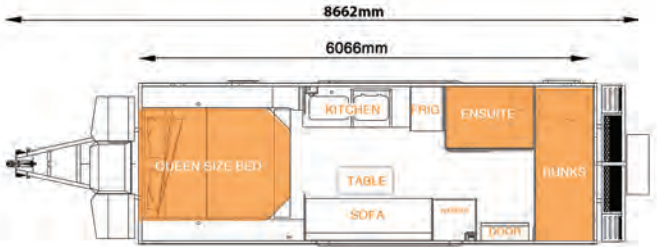


www.ozstarcavans.com.au

OZ STAR COCKATOO SERIES

20FT FAMILY DOUBLE

Inclusions



Specifications

- ATM 3500kg
- GTM 3250kg
- Ball weight 250kg
- Payload 640kg
- Height 3100mm
- Width 2200mm
- Tare Weight 2860kg

Interior

- High Density Foam Mattresses
- Optional - Inner Spring Mattresses
- Queen Bed (1500 mm x 2000 mm)
- Top Bunk (710 mm x 1900 mm)
- Bottom Bunk (710 mm x 1900 mm)
- Third Bunk (Optional) (710 mm x 1900 mm)
- Ensuite, Shower and Toilet
- Leatherette Seating
- Environmentally Friendly Vinyl Flooring
- Environmentally Friendly Square Benchtops
- Living Area Cupboards and Draw System includes Double-sided Acrylic Doors
- Double Glazed Window Including Block-out and Mesh Blinds

Electrical

- Integrated Oz Star Monitoring Control Panel
- 300Ah Lithium Battery in External Box (5yr warranty)
- 3000w Smart Control RV Inverter
- 330w Roof Solar Panels MPPT Controlled
- Optional Extra 165w Solar - Total 495w
- Car Play Android Auto MP5/HD Video Player
- Internal and External Marine Sound System
- Internal and External 12v & 240v Power Outlets
- Internal and External Led Lighting
- 22" Smart TV
- 12v Wall Mounted Fan

Appliances

- 185L Dual Zone Fridge Freezer
- 20L Microwave
- 2 Burner Gas Cooktop
- Reverse Cycle Air Conditioner
- 12v Range Hood
- Gas Hot Water System
- 12v 2kw Diesel Heater with a 10 Litre Fuel Tank
- 3.5kg Washing Machine

Plumbing

- Fresh Water Tank - 200L
- Grey Water Tank - 120L
- 12v Seaflow Water Pump
- Gas Hot Water System
- Internal Stainless Steel Black Sink Including Cobbe Matte Black Fittings
- Internal Ensuite - Shower and Toilet
- External Shower Box
- Certified Plumbed Gas to Internal Kitchen
- External Gas Bayonet Point

Chassis

- Galvanised Hot-Dipped Chassis & Front Draw Bar
- Dual-sided Independant Suspension Including 265/75R 16LT Mud Terrain Tyres
- 12' Electric Brakes
- 1 Spare Tyre
- Off-Road Hitch
- AL-KO Jockey Wheel
- 2 x 4.5kg Gas Bottle Holders in Middle Tool Box - Lockable
- Heavy Duty Stabilising Legs
- Dual Front Storage Boxes
- 7 Pin Flat Trailer Connection (Optional 7 Pin Round)
- Electric Brake Away System
- Australian Standards Hand-brake
- LED Body Running Lights (Brakes, Indicators and Clearance Lights)

Exterior

- Marine Grade Composite Caravan Body
- Aluminium Pattern Protection Side Skirting
- RV Special Entry Door Including Anti-Mosquito Security Screen Door
- Oz Star 4.6 Metre Heavy Duty Awning - Roll-out Awning
- Double Glazed Windows
- RV Blinds Including Anti-Mosquito Net and Sunshade
- Front Mounted 200w LED Light Bar
- Wireless Reverse Camera and Screen