

LOCAL CHURCH TOOLKIT

Laity Session

Jill Davis

Annual Conference Secretary

jill.davis@greatlakesgmc.org



WOULD YOU RATHER...



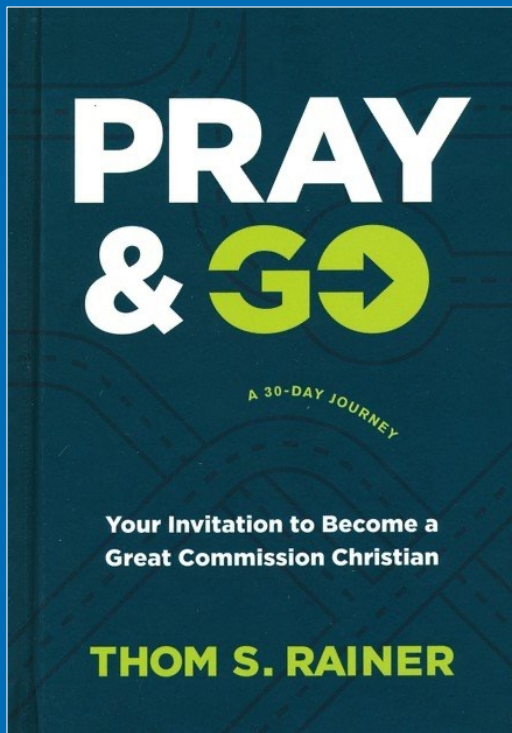
WOULD YOU RATHER...
Knock on a neighbor's door
and tell them about Jesus
or
Eat a cricket



Eat a cricket



THE HOPE INITIATIVE



- Recommended by the Conference
- 30-Day Program from Church Answers
- Small Groups or Church-wide
- Includes Weekly Follow-up Emails



Trust in the slow work of God.

- Pierre Teilhard de Chardin





**Where do you see
God at work
in your local church?**



BUSINESS FORMATION & CONTINUATION CONSIDERATIONS

Mike Womack
Treasurer, GL Annual Conference
mike.womack@greatlakesgmc.org





MISSIONS TOOLKIT

David and Darlene Schaffer

Mission Co-Chairs

darlene.schaffer@greatlakesgmc.org



What do we want for people we help?



FOREWORD BY DAVID PLATT

EXPANDED
EDITION

WHEN HOW TO ALLEVIATE POVERTY HELPING WITHOUT HURTING THE POOR HURTS ...AND YOURSELF



STEVE CORBETT & BRIAN FIKKERT

1. Relief vs. Development



- 1. Relief vs. Development**
- 2. Misguided Development
can do harm**



- 1. Relief vs. Development**
- 2. Misguided Development
can do harm**
- 3. Keep giving**

**Gifts can bring
dependence.**

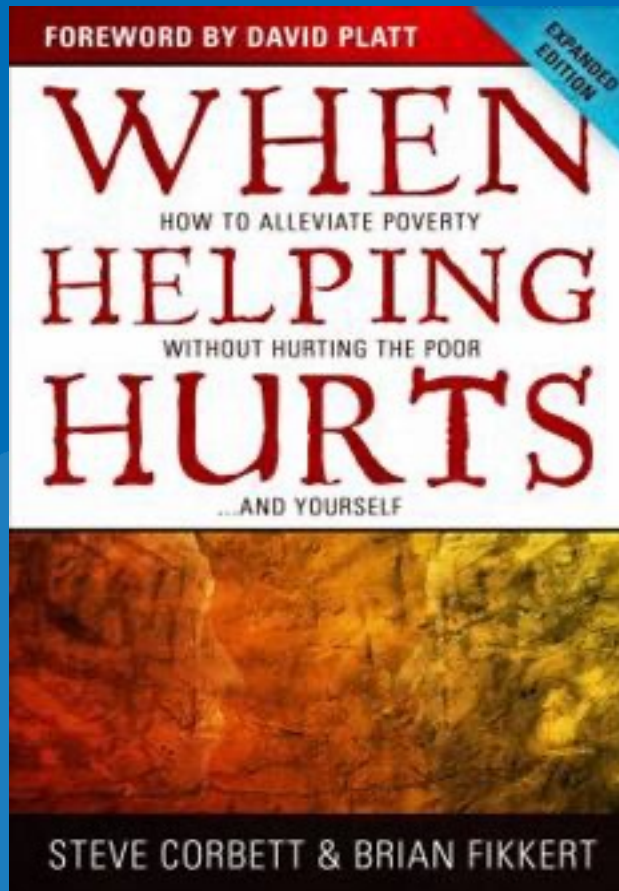
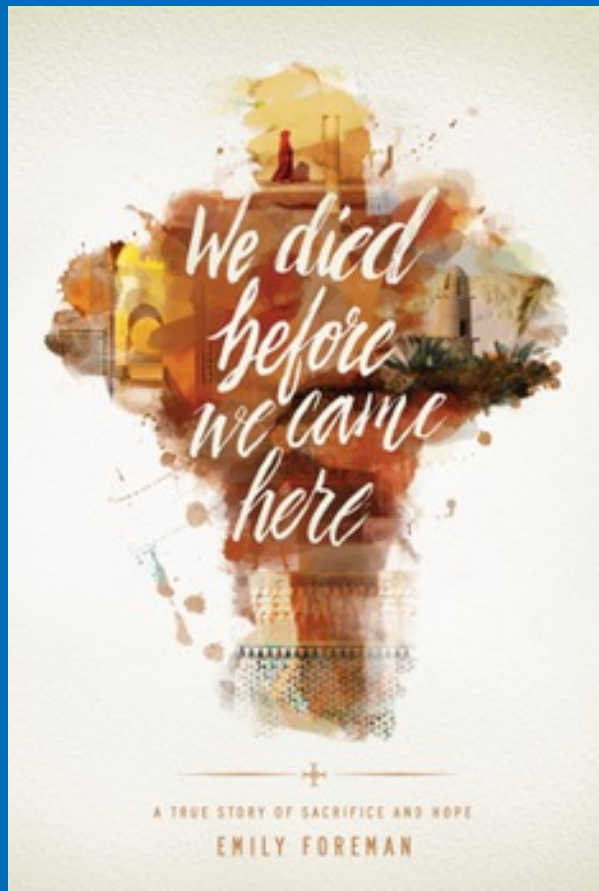




TRUE CHARITY



EQUIP
2025 GREAT LAKES
ANNUAL CONFERENCE



A CATECHISM
OF
CHRISTIAN
FAITH
AND
DOCTRINE
FOR
THE
GLOBAL
METHODIST
CHURCH



CHRISTIAN
FAITH
AND
DOCTRINE

AN
ANNOTATED
CATECHISM
FOR THE
GLOBAL METHODIST
CHURCH



A CHURCH-WIDE STUDY IN THE
ESSENTIALS OF CHRISTIAN FAITH

PROFOUNDLY
DISTINCTLY
CHRISTIAN
METHODIST

RYAN BARNETT & JASON VICKERS

ADULT STUDY



The Wesleyan Network for Global Mission

Existing to aid the local church in best practices related to the completion of the Great Commission.

The Wesleyan Network for Global Mission (WNGM) exists to support local churches on a global level for kingdom advancement in the completion of the Great Commission

Find missional ministries and strategic missional partners for your local church

<https://globalmethodist.world/>



Local Church Discussion and Assessment Guide



Local church mission discussion points

- How is the GMC different than the UMC in the area of missions?
 - How each level in the church structure is active in missions activities and support.—
Local congregation, Conference and Denomination.
 - The need for each “mission” effort to have some evangelization component.
 - The UMC used a portion of local church ministry shares to support mission efforts which a central commission identified. The GMC will not use this process, allowing ministry shares to be smaller and thus available for the local church to apply to missions of their own choosing.
- The GLAC plans to offer guidelines for individual churches to use in selection of mission entities consistent with the GMC vision and doctrines.
- Local churches should consider how it makes its mission efforts visible to the entire congregation and also how it engages the local community.
- Does the local church have a lay led team focused on missions?
- Does the local church do an “annual review” of it mission efforts? Volunteer hours as well as giving should be included.
- At the denomination level, there will be a published list of national and international mission programs that have been vetted for suitable Wesleyan doctrine and solid accountability for the local church to use in their mission support decisions.
- The GLAC plans to have a conference based vetting team to help local churches in their discernment of local and regional opportunities.
- The GLAC will likely identify another GMC conference with which to form a long-term strategic partnership. Usually this will be cross cultural. Financial implications are undefined at this point.
- Consider partnerships with nearby GMC churches when this will strengthen the effort and provide a local connection between churches.

FOR INDIVIDUALS: LOCAL CHURCH ASSESSMENT

Thank you for your willingness to answer questions about our local church. This is part of a larger mission engagement assessment, & your input is valued. Please answer honestly from your point of view. This survey is anonymous.

This assessment is not intended to shame anyone or lead to legalism, but simply to help our leadership focus on our aim to love God & love people here, there, & everywhere. Together we are seeking to answer the question: *How is God uniquely leading our church to love him & to love others? How can we better equip the body of Christ to do so?*

Please fill in the bubbles using the following subjective measures:
 1 - Strongly Disagree 2 - Disagree 3 - Neutral 4 - Agree 5 - Strongly Agree
 ● ○ ○ ○ ○ ● ● ○ ○ ○ ● ● ● ○ ○ ● ● ● ● ○ ● ● ● ● ●

I regularly & intentionally pray for those who are lost in my family, friends, co-workers, & neighbors.	○ ○ ○ ○ ○
I know what an unreached people group is. Define the term on the back of this page.	○ ○ ○ ○ ○
I regularly pray (& fast) for unreached people groups.	○ ○ ○ ○ ○
I regularly participate in an accountable community group that strongly encourages me in sharing the Gospel.	○ ○ ○ ○ ○
I have opportunities to be trained in an ongoing basis in how to make disciples.	○ ○ ○ ○ ○
I support cross cultural workers & indigenous global leaders by encouraging them, talking with them on the phone or Zoom, praying for them, visiting them, etc.	○ ○ ○ ○ ○
I financially support cross cultural workers or indigenous global leaders or mission agencies that serve unreached people groups.	○ ○ ○ ○ ○
I understand my spiritual gifts and feel supported to use my spiritual gifts on mission in my city, my region, & around the world.	○ ○ ○ ○ ○
I have had the opportunity in the past year to go on a short-term mission trip to share the Gospel or plant churches.	○ ○ ○ ○ ○
I have engaged in serving unreached people groups in the past year in my city, in my region, and around the world.	○ ○ ○ ○ ○
I know how to clearly communicate the Gospel & lead someone to Jesus.	○ ○ ○ ○ ○
I have opportunities to be trained in an ongoing basis in how to share the Gospel.	○ ○ ○ ○ ○
I have engaged UPGs in Gospel-sharing this year in my city, in my region, & around the world.	○ ○ ○ ○ ○

FOR LEADERSHIP: OUR CHURCH'S MISSION ENGAGEMENT

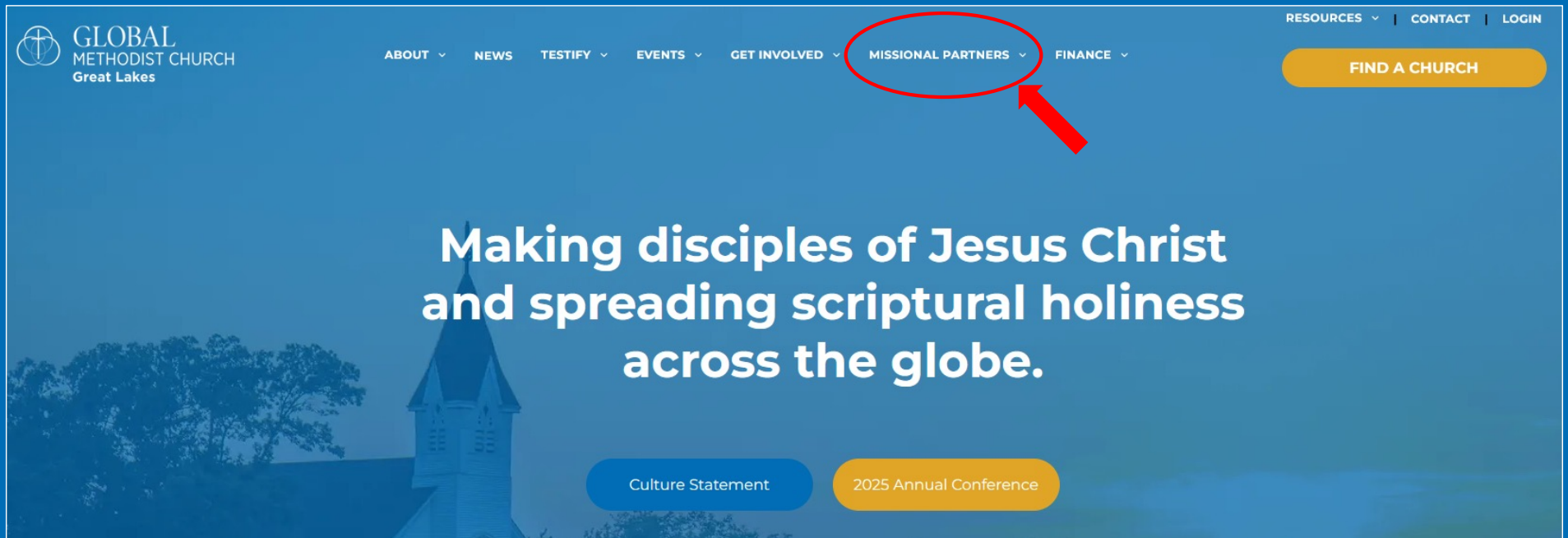
Print a copy of this page for each member of your leadership team. Have each person fill in the bubbles with their leadership perspective using the following subjective measures:

1 - Strongly Disagree 2 - Disagree 3 - Neutral 4 - Agree 5 - Strongly Agree
 ● ○ ○ ○ ○ ● ● ○ ○ ○ ● ● ● ○ ○ ● ● ● ● ○ ● ● ● ● ●

PRAYERS	
The majority of our church regularly & intentionally pray for those who are lost in their family, friends, co-workers, & neighbors.	○ ○ ○ ○ ○
The majority of our church knows what an unreached people group is.	○ ○ ○ ○ ○
The majority of our church regularly prays (& fasts) for unreached people groups.	○ ○ ○ ○ ○
PRESENCE	
The majority of our church regularly participates in an accountable community group that strongly encourages them in sharing the Gospel.	○ ○ ○ ○ ○
The majority of our church have opportunities to be trained in an ongoing basis in how to make disciples.	○ ○ ○ ○ ○
The majority of our church supports cross cultural workers & indigenous global leaders by encouraging them, talking with them on the phone or Zoom, praying for them, visiting them, etc.	○ ○ ○ ○ ○
GIFTS	
The majority of our church financially support cross cultural workers or indigenous global leaders or mission agencies that serve unreached people groups.	○ ○ ○ ○ ○
The majority of our church understands their spiritual gifts and are supported to use their spiritual gifts on mission in your city, your region, & around the world.	○ ○ ○ ○ ○
SERVICE	
The majority of our church have had the opportunity in the past year to go on a short-term mission trip to share the Gospel or plant churches.	○ ○ ○ ○ ○
The majority of our church have engaged in serving unreached people groups in the past year in your city, in your region, and around the world.	○ ○ ○ ○ ○
WITNESS	
The majority of our church knows how to clearly communicate the Gospel & lead someone to Jesus.	○ ○ ○ ○ ○
The majority of our church have opportunities to be trained in an ongoing basis in how to share the Gospel.	○ ○ ○ ○ ○
The majority of our church have engaged UPGs in Gospel-sharing this year in my city, in my region, & around the world.	○ ○ ○ ○ ○

Great Lakes GMC Website

- “Mission Partners” tab with resources
- <https://www.greatlakesgmc.org/>





**How does your church live
into being part of the
global church?**



BLESS Rhythm

Emily Beeks
emilyqbeeks@gmail.com



BLESS Rhythm



Begin with Prayer

Listen

Eat

Serve

Story





**Share an example of how your
church is a good neighbor
in your community.**



MORE TOOLS...





Women ▾

Children + Youth ▾

Music + Tech ▾

Leadership ▾

Outreach ▾

Membership

Events

Free Resources & Ministry Tips for Volunteers & Ministry Leaders in Small Churches

Find what works in small churches for women, children, worship, youth, communications, media, outreach, leadership, and more.

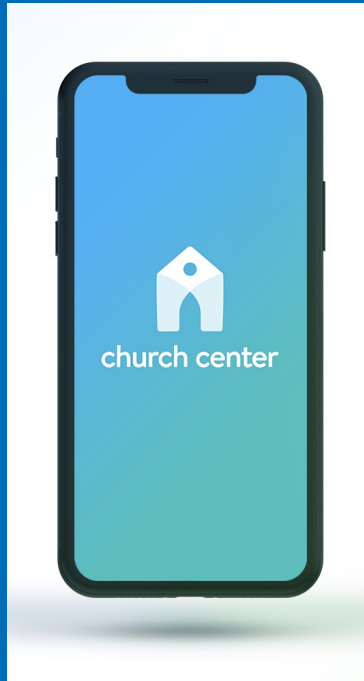


22





planning center



Church Management Software with FREE:

- Database & Simple Group Emails
- Church Photo Directory
- Calendar
- Church App
- Simple Website

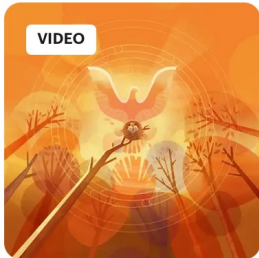
Many add-ons, pay-as-you-go



BibleProject

The Latest Class, Podcast, and More

VIDEO



Passage Study: What Is Passover?

Insights

2:45

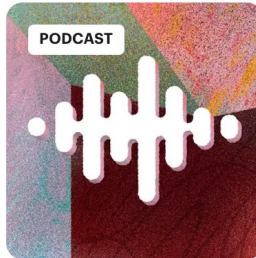
ARTICLE



7 Powerful Women in the Bible Who Help Rescue God's People

7 min

PODCAST



When Was the Hebrew Bible Finished?

How the Bible Was Formed

3 Episodes

CLASSROOM



Joseph

By Dr. Tim Mackie

GUIDE



Holy Spirit

Explore a guide to the role
of the Holy Spirit in the...

RESOURCES

Jill Davis, Annual Conference Secretary
jill.davis@greatlakesgmc.org

Session notes will also be published
after Annual Conference.

