



## Welcome to the CASLE newsletter

### Greetings from CASLE President—Dr Charisse Griffith-Charles



Hello, my global CASLE colleagues! Welcome to this CASLE newsletter that takes us into the second quarter of 2026. How time flies for all of us busy professionals! A lot has been done by CASLE and its member bodies already this year and this Newsletter struggles to encapsulate a complete record of all that has transpired . You can read here in the newsletter details on how CASLE has conferred honorary membership on Professor Olubola Babalola, supported the Global Day of the Surveyor 2026, and attended Commonwealth Day, and the 5<sup>th</sup> International Land Management Conference. Read about the new FIG Publication No. 85 on Surveying for Climate Resilience: Practical Climate Actions, the new RICS professional standard on the Responsible Use of AI, and the latest Survey Review, all interesting and informative surveying content in the form of these various publications. Keep up to date with a note on the impact of GNSS spoofing on the current war in the Gulf Region, and news on new funding opportunities for land and housing research offered by the Aubrey Barker Fund. Note, with pride, the renaming of the headquarters of one of our member bodies in honour of our past president, Joseph Ajanlekoko. In addition, the Newsletter rounds up all the recent, and proposed activities of member bodies. I, and the management committee would truly love to continue hearing from you and to disseminating information on all your completed and upcoming activities so, keep sending in those stories and images that reflect the vibrancy of the surveying and land economy community!

### NIQS Renames Abuja Headquarters After Ajanlekoko

CASLE was delighted to receive news that NIQS (Nigeria) has honoured our past president Joseph Ajanlekoko by naming its impressive Abuja HQ after him. The Nigerian Institute of Quantity Surveyors (NIQS) has renamed its national headquarters in Abuja as QS J. Segun Ajanlekoko House, in honour of a distinguished professional whose legacy has shaped the growth of quantity surveying in Nigeria and across Africa. Speaking at the unveiling ceremony, NIQS president, Dr. Aminu M. Bashir, described the occasion as a watershed moment in the Institute’s history, noting that the decision to immortalise Ajanlekoko was in recognition of his decades of service, mentorship, and contributions to professional development. Chairman of the occasion, Mr. Ademola Adebise, said the new headquarters symbolises the Institute’s resilience, growth, and commitment to professional excellence, stressing that quantity surveyors play a critical role in ensuring cost discipline, transparency, and value in Nigeria’s construction industry.



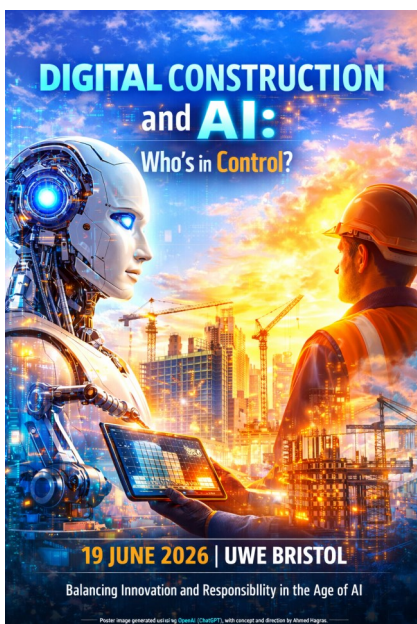
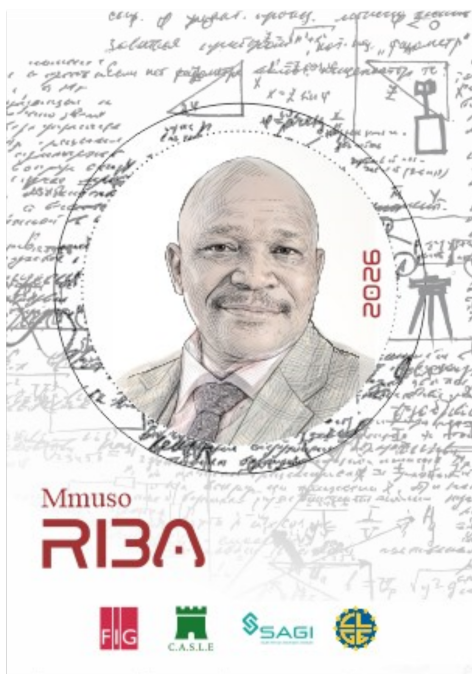
### NIQS Renames Abuja Headquarters After Ajanlekoko

Photo taken at the unveiling of the renaming of the NIQS Secretariat Building in Abuja as "QS J.SEGUN AJANLEKOKO HOUSE "

From left to right:- Guest Speaker- Mr Donald Duke (Former Governor of Cross River State),President of NIQS- Dr. Aminu Bashir,Mr Joseph Ajanlekoko, Mrs Lola Ajanlekoko, Chairman of the occasion, Mr Demola Adebise,former MD of Wema Bank and Mr Obafemi Onashile- President of Quantity Surveyors Registration Board of Nigeria ( QSRBN)

## Global Day of the Surveyor 2026

Organised by [FIG](#), [CASLE](#), and [SAGI](#) the international surveyors community met virtually on 20 March 2026 on the topic *The vital role of local and regional organisations in surveying*, in two identical sessions during the day. An interesting panel discussion was held and hereafter the Surveyor of the Year was revealed: Former Surveyor General Mmuso Riba from South Africa. He was the first black Surveyor General in South Africa and stood for equality and equity and a remarkable leadership, delivering non-biased solutions. He served on UN-GGIM, and as a FIG representative to UN-Habitat. SAGI president Peter Newmarch (SAGI) chaired the session. Closing remarks were delivered by Charisse Griffith-Charles, CASLE and FIG President Diane Dumashie. For a full report (including from CASLE members, very well done GhS and Ghana) see [News from FIG 2026 - Global Surveyors Day on 21 March 2026](#)



## Professor Olubola Babalola—HonCASLE

CASLE is delighted to confer honorary membership to Professor Olubola Babalola, a pioneering leader in Quantity Surveying and Construction Management at Obafemi Awolowo University, Ile-Ife. Professor Babalola's career is marked by a series of landmark achievements—including being the first female Quantity Surveyor with a doctoral degree in West Africa and the first female Professor of Quantity Surveying in Africa—alongside significant academic leadership roles such as Head of Department, Vice-Dean, Dean, and Deputy Vice-Chancellor (Academic). Beyond the university, she has made outstanding contributions through professional service and international academic engagement—supporting research communities, reviewing for leading journals and publishers, and serving as an external examiner across Africa and beyond. Her work continues to inspire progress on inclusion, excellence, and professional practice across the built environment sector.



### Digital Construction and AI: Who's in Control?

19 June 2026  
UWE Bristol

This year marks the third year in a row of our annual conference series, building on the success of our previous events, Are We There Yet? and Digital Construction Climate Nexus.

This year's conference will bring together industry and academia to explore one of the most pressing questions facing the built environment today: as AI becomes increasingly embedded in digital construction, who remains in control?

The event will feature keynote talks, breakout sessions, networking opportunities, and a live debate between industry and academia, creating space for critical discussion around innovation, responsibility, decision-making, and the future of the sector.

We would be delighted to welcome you to join us for what promises to be an engaging and timely event.

Register here: <https://www.eventbrite.co.uk/e/digital-construction-and-ai-whos-in-control-tickets-1985439937299?utm-campaign=social&utm-content=attendeeshare&utm-medium=discovery&utm-term=listing&utm-source=cp&aff=ebdsshcopyurl>

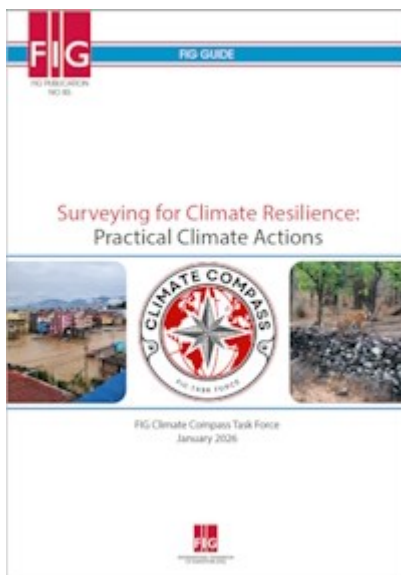
**Surveying for Climate Resilience: Practical Climate Actions - New FIG publication no. 85**

This publication, Surveying for Climate Resilience: Practical Climate Actions, spanning land, water, and marine surveying – highlights the essential role of surveying professionals in advancing climate resilience.

The publication is the result of the work in the FIG Climate Compass Task Force (2023-2026) and offers practical strategies and real world examples to support climate adaptation, mitigation, and disaster resilience at national and local levels. With its 16 high level Climate Actions, this publication marks a significant milestone for FIG.

The publication is written and edited by Chair of the Task Force, Clarissa Augustinus. Contributing authors of the publication are Uchendu Eugene Chigbu, Charisse Griffith-Charles (CASLE President), Simon Ironside, Eranda Gunathilaka and Rigoberto Moreno Vazquez. The other members of the task force who have supported this work are Angela Anyakora, David Elegbede, Naa Dedi Tagoe, Cromwell Manaloto, Enrico Rispoli and Maria Scorza.

**News from FIG - 2026 - New FIG Publication no. 85: Surveying for Climate Resilience: Practical Climate Actions**



**CASLE at Commonwealth Day March 2026**

CASLE was delighted to be in attendance at the March 2026 Commonwealth Day celebrations at Westminster Abbey London UK. This year's theme 'Unlocking opportunities together for a prosperous Commonwealth,' highlighted how the 56 member countries of the Commonwealth can rally together to face today's challenges and unlock opportunities that can deliver shared and lasting prosperity for all who live in the Commonwealth — from the smallest, most remote communities to the biggest cities. In her first Commonwealth Day message, the Commonwealth Secretary-General, Hon Shirley Botchwey said: “Commonwealth Day is both a celebration and a promise. I hope that this Commonwealth Day, each of us can share in a celebration of enduring bonds across oceans and generations and renew our promise that – despite the uncertainty of our times - we choose cooperation over division, dialogue over discord, and partnership over isolation. When we do, we do more than navigate change. Together, we shape a future worthy of our shared values and all our people.”



The theme for Commonwealth Day 2026 aligns with the 2026 Commonwealth Heads of Government Meeting (CHOGM) theme, 'Accelerating Partnerships and Investment for a Prosperous Commonwealth.' CHOGM 2026 will take place in Antigua and Barbuda from 1-4 November.

[Commonwealth Day | Commonwealth](#)



CASLE is, once again, delighted to engage with FIG and will be in attendance at the global surveying congress of 2026. More details can be found @ [Invitation to FIG Congress 2026 in South Africa](#)

## GNSS Spoofing and mitigation in the Arabian Gulf

Geospatial Professional Practice Update & Latest Regional Developments (as of March 24th 2026)

The Gulf region—one of the world’s most GNSS-dependent geographies—is simultaneously one of the most interference-prone. Recent data from shipping intelligence, maritime authorities, and Gulf governments shows a dramatic escalation in spoofing, jamming, AIS manipulation, and timing degradation across the Strait of Hormuz, UAE waters, Oman, Qatar, and the wider Gulf. The implications span navigation safety, land boundary integrity, mega-project engineering, and national timing infrastructure.

This update integrates insights from IHO hydrographic standards, Galileo OSNMA developments, international

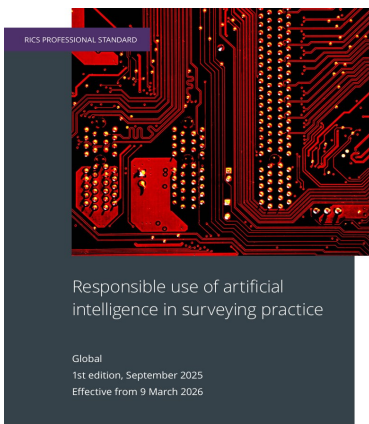
geodesy agencies (IAG, UNGGIM geodesy), peer-reviewed GNSS journals, and the RICS Guidelines for the Use of GNSS in Land Surveying and Mapping.



[GNSS Spoofing and mitigation in the Ara-](#)

## Responsible use of AI - a new RICS professional standard

AI is increasingly being involved – both knowingly and unknowingly - in producing professional work in surveying. Since AI can be used to substitute human decision-making, it is important to have safeguards in place to ensure members and RICS-regulated firms maintain control of their professional work. This ensures quality for clients and upholds high standards in the public interest.



The standard aims to assist RICS members and regulated firms in establishing guardrails to maintain professional judgement while adapting to the use of this new technology, build confidence in data management and ensure effective communication with clients. By doing so, the standard seeks to support trust

among stakeholders and ensure AI enhances safety, resilience, and innovation in the natural and built environment.

[Artificial Intelligence in the natural and built environment sector](#)



## 5th International Land Management Conference (ILM5)

The 2026 International Land Management Conference underscored a simple but often uncomfortable truth: land governance never operates in isolation from the political, economic and socio cultural forces that shape it. Lasting reform requires an honest understanding of how interests, incentives, power dynamics and institutional behaviours dictate the way land is supplied, valued, administered and governed. This year’s discussions built on that foundation, highlighting the importance of political economy informed practice and the growing body of research examining why certain reforms endure while others fail. With nearly 50 speakers, over 400 attendees, and 1,100 registrations from 128 countries—including government representatives, NGOs, professional bodies, academics, students and practitioners—the conference reflected a truly global commitment to building more equitable, sustainable and economically effective land governance systems.

Framed around four interconnected themes, the conference pushed the conversation forward: improving understanding of the political economy factors shaping land governance; examining power, agency and inclusion; widening perspectives to align land governance with broader development and climate goals; and re-thinking the economics and financing of land in light of biodiversity, natural capital and resilience. This year’s hybrid format, delivered in partnership with the FCDO funded Land Facility, its Decision Support Unit, and RICS, strengthened opportunities for knowledge exchange and adaptive, evidence informed decision making. Together, these contributions make clear that progress in land governance depends not just on technical solutions, but on politically realistic pathways grounded in the complex realities practitioners face every day.



Global delegates from across the globe (and commonwealth) at ILM5 March 2026.

## [5th International Land Management Conference, 3-4 March 2026 – LINK](#)

Contact: Grazyna Wiejak-Roy <Grazyna.Wiejak-Roy@uwe.ac.uk>

## SURVEY REVIEW

Survey Review is a peer-reviewed international journal that has been published continuously since 1931. It brings together current research, theory and practice in the broad areas of geospatial positioning and information, geodesy, remote sensing, survey and mapping, and land administration. These disciplines are vital to tackling global challenges including enhancing security of land tenure and land rights for all, climate change and sustainability, and disaster response. The journal is an invaluable resource for those who seek to maintain their currency of knowledge in these rapidly developing fields. The journal may be known to some CASLE members, but others may not have come across it. Survey Review has a rich pedigree, having originated from a decision by the Empire Survey Officers Conference in 1928. The content of Survey Review is broad – it covers the majority of the range of CASLE activity.

The contents of the March 2026 edition include:

- Beyond the title-deed division – developing a holistic framework for characterising mature cadastral systems
- Three-dimensional adjustment of free stationing track-surveying for high-speed railway considering datum errors
- A fast and reliable crack measurement approach based on perspective projection simulation models and UAV imaging for dam and levee inspections
- Closed-form least squares solution for the planar three-parameter transformation with a general weight matrix

This gives a flavour of the range of articles in the journal. Papers are published online as well as in hard copies of the journal. Taylor & Francis publishes the journal on behalf of Survey Review Limited. All articles from the first edition in 1931 are available electronically.

For more information visit

<https://www.tandfonline.com/journals/ysre20>



## Aubrey Barker Fund – New funding streams and news

The Aubrey Barker Fund, working in collaboration with Geoffrey Payne and a panel of international experts, including Banashree Bannerjee, Eugene Chigbu, Forbes Davidson, Tony Lloyd-Jones, Jean du Plessis and Michael Slingsby. The ABF Urban Kickstart scheme aims to improve secure access to land and housing by supporting research and other activity which advances and disseminates knowledge and skills in land management and related disciplines. Aubrey Barker Fund is excited to announce that Dorraine Duncan, an urban planner and co-founder of Jamaica-based research think-tank Island City Lab, has been awarded the 2026 Urban KickStart Grant. Her research project aims to re-surface Jamaica's history of communal land tenure systems with the goal of reintroducing them as viable instruments for sustainable land regularization, prevention of community displacement, and the safeguarding of affordable housing and livelihoods across Jamaica's urban areas. Instruments of collective land ownership/stewardship have existed throughout Jamaica's history, protecting and providing affordable housing. Post-Emancipation, these tenure systems have effectively de-commodified housing and land by removing them from the emerging globalized real estate markets and prioritized collective needs over individual profit and macro-economic abstractions. For details on more ABF funded projects (Rwanda Land Survey next gen for example and pictured below) check the website: <https://aubreybarkerfund.org/abf>



## Surveyors Australia and Pacific Geospatial and Surveying Council Sign MOU at 7th PGSC Meeting in Fiji

**Nadi, Fiji** – Surveyors Australia and the Pacific Geospatial and Surveying Council (PGSC) have signed a Memorandum of Understanding formalising their partnership to strengthen the surveying and geospatial professions across the Pacific region.

The MOU was signed on Friday 17 April by Surveyors Australia President Cameron Mills and PGSC Chair Vaipo Mataora at the 7th PGSC Meeting in Nadi, Fiji. It commits both organisations to collaboration across workforce development, institutional strengthening, resource mobilisation, academic partnerships, diversity and inclusion, and regional advocacy.

The signing took place at the conclusion of a three-day meeting that brought together Heads of Geospatial and Surveying Departments from 14 Pacific Island nations, alongside regional and international partners including Geoscience Australia, Land Information New Zealand, and the International Federation of Surveyors.

Fiji’s Minister for Lands and Mineral Resources, Filimoni Vosarogo, opened the meeting with a direct challenge to the Pacific geospatial community, calling on nations to “secure the geodetic backbone of our future” and move regional cooperation from goodwill to operational reality. The Minister emphasised the need for strategic investment in leadership and management capability, noting that a new generation of Pacific geospatial leaders is essential to translate technical expertise into policy and institutional change.

Surveyors Australia CEO Michelle Blicavs delivered a leadership training session at the meeting, directly addressing the leadership development priorities identified by the Minister and the Council.

“This MOU gives structure to a partnership that has been building for years,” Ms Blicavs said. “Through Industry Training Alliance and our shared commitment to the profession, we can now deliver the kind of coordinated, practical support that the Minister called for. The strength of the surveying profession depends on capacity everywhere, not just at home.”

Under the agreement, Surveyors Australia will work with the PGSC on joint training and mentoring, support governance and policy development across Pacific surveying agencies, and collaborate on shared funding strategies. Both organisations have committed to embedding gender equity, youth participation, and Indigenous perspectives into all workforce initiatives. A Joint Implementation Plan with specific deliverables and timelines accompanies the MOU, running from 2026 to 2031.

The 7th PGSC Meeting also reviewed the PGSC Strategy as the Council approaches the final year of its 2017–2027 plan, assessed progress across its three Working Groups (Positioning, Policy and Data Management, and Capacity Development), and elected new leadership. Key themes included climate resilience, maritime boundary delimitation, LiDAR investment priorities, and gender equality and social inclusion (GEDSI).

A separate one-day Regional LiDAR Consultation Workshop follows on 20 April, focused on developing a Pacific-endorsed site prioritisation framework for coastal inundation forecasting.



**Media contact:** Michelle Blicavs, CEO, Surveyors Australia

*The Pacific Geospatial and Surveying Council (PGSC), established in 2014, brings together national leaders and technical experts in surveying, hydrography, and geospatial information management from across Pacific Island Countries and Territories. The PGSC is supported by the Pacific Community (SPC) through the PGSC Partnership Desk.*

*Surveyors Australia is the peak body representing more than 600 surveying firms and 5,000 professional surveyors and allied professionals across Australia. Surveyors Australia is a partner of the PGSC, the International Federation of Surveyors (FIG), and the Commonwealth Association of Surveying and Land Economy (CASLE).*

*Pacific Geospatial and Surveying Council Chair, Vaipo Mataora. Credit: PGSC.*

## THE INSTITUTION OF SURVEYORS OF KENYA (ISK)



### Global Surveyors Day 2026 Celebrations

In commemoration of Global Surveyors Day 2026, ISK organized nationwide activities including processions, professional engagements, land clinics, and tree planting exercises, demonstrating its commitment to community outreach and public awareness on land and real estate issues in Kenya. On 24th March 2026, the ISK President Eric Nyadimo led a procession of surveying professionals and geospatial and real estate university students through the Nairobi Central Business District, culminating in a professional engagement at University of Nairobi. At the same time, ISK's Western Branch held a parallel procession in Kakamega Town, followed by a land clinic in Homa Bay on 25th March 2026. Further activities were held across the country, with the Coast Branch hosting a land clinic at the Malindi Land Registry, while members in Eastern Region congregated at Maua and marked the Global Surveyors Day through a procession, tree planting exercise, and a land clinic within the town. Additionally, the South Rift Branch conducted a land clinic in Bomet at Ardhi House. These activities underscored ISK's dedication to professional engagement, environmental sustainability, and bringing essential land and real estate services closer to communities across Kenya.



### ISK Hosts Media Breakfast

On 4th March, 2026, the Institution of Surveyors of Kenya (ISK) hosted a high-level Media Breakfast Meeting at the Sarova Stanley Hotel in Nairobi. The ISK delegation was led by President Eric Nyadimo, accompanied by Deputy President Nelly Mbugua, OGW, Council Members Joyceline Makena, Ayub Naburi, Livingstone Asala, and Evans Mutinda, as well as CEO Peter Kibet arap Biwott. The forum was graced by Chief Guest Mwenda Njoka, CEO of Cape Media, and brought together members of the Fourth Estate and key stakeholders in the media industry in Kenya for a robust and forward-looking engagement on key issues shaping Kenya's land and real estate sector.



### 11<sup>th</sup> ISK Africa Regional Conference (ARC) 2026 and May 2026 ISK conference Mombasa

Join us for the 11<sup>th</sup> ISK Africa Regional Conference and be part of transformative conversations that will shape the future of the land and built environment professions across the continent. 28th to 30th October 2026 .



2025 ISK Africa Conference



## CASLE Conferences 2026

### Sri Lanka

**The 14th World Construction Symposium will be held from 10-11 July 2026; The Symposium focuses on 'Towards Regenerative Built Environment From Foresight to Action'**

The Ceylon Institute of Builders (CIOB) and Building Economics and Management Research Unit (BEMRU), Department of Building Economics, University of Moratuwa, Sri Lanka are jointly organizing the 14th World Construction Symposium from 10-11 July 2026. This annual symposium will provide a special forum for researchers and practitioners in the areas of built environment and construction industry related research worldwide to share their knowledge, experiences and research findings. The symposium is intended to be held physically. However, the international participants are given the opportunity to attend the symposium in hybrid mode. WCS full papers have been **indexed in Scopus** since 2019. Papers accepted and presented at the symposium will be published in symposium proceedings with an ISSN.

**Awards:** The Ceylon Institute of Builders (CIOB) and the Built Environment Project and Asset Management (BEPAM), a journal published by Emerald Group Publishing, have arranged the following awards for the author(s) of outstanding papers of the symposium:

- CIOB Best paper award
- CIOB Highly commended paper award
- BEPAM Best paper award
- Two (02) BEPAM Highly commended paper awards

Conference Web site [www.ciobwcs.com](http://www.ciobwcs.com)

**The Pacific Association Quantity Surveyors Congress 2026 (PAQS Congress 2026)** - 21 - 25 August 2026 at Named "FIRST LIGHT -PAQS 2026 "TO THE DAWN OF A TRANSFORMATIVE JOURNEY WHERE KNOWLEDGE , INNOVATION AND COLLABORATION MEET IN THE HEART OF SRILANKA" HOSTED BY INSTITUTE OF QUANTITY SURVEYORS SRI LANKA AT CINNAMON LIFE , CITY OF DREAMS , COLOMBO SRI LANKA CONFERENCE [PAQS CONGRESS 2026 – Constructing the Evolution: Unleashing the Human Potential](#)

### **Third United Nations World Geospatial Information Congress (UNGGIM / UNWGIC)**

**Date: 16–19 November 2026 Location:** Jeddah, Saudi Arabia

The UNWGIC is the flagship global policy event for geospatial information management, convened by the United Nations Committee of Experts on Global Geospatial Information Management (UNGGIM). It brings together governments, national mapping agencies, professional bodies, academia and industry to shape global geospatial policy, standards, geodesy, land administration and digital public infrastructure.

<https://ggim.un.org/3UNWGIC/>

### **GEO Business 2026 – UK Geospatial Conference & Exhibition**

**Date: 3–4 June 2026 Location:** ExCeL London, United Kingdom (Commonwealth)

GEO Business is the UK's principal geospatial and surveying conference and exhibition. It focuses on applied geospatial practice, surveying technologies, digital twins, infrastructure delivery, AI and climate resilience, and attracts strong participation from surveyors, engineers and public sector bodies across the Commonwealth.

<https://www.geobusinessshow.com/>

### **FIG / CASLE–Led Professional & Commission Events (late cycle FIG 2023–2026)**

**Date: July–October 2026 (various dates) Location:** Commonwealth member countries (hybrid/in person)

In the latter part of 2026, FIG Commissions and Commonwealth aligned bodies such as CASLE deliver specialist technical seminars and commission events ahead of the concluding cycle of FIG 2023–2026 work programmes. These cover land governance, education, professional standards and capacity building, particularly in Africa and small state Commonwealth jurisdictions.

<https://www.fig.net/events/>