

Digital Dental Radiography



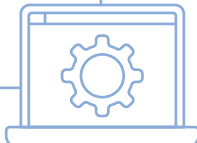
Dental Vu H2

Handheld Capacitor Generator
Laptop loaded with Sopro Imaging Software
One #2 Sized VetRay Digital Dental Sensor
Includes our Turnkey Solutions Package

SO CONVENIENT,

simple to use software allows for quick learning curve

- DICOM Compatibility
- Reporting feature
- Import and export features



Handheld Capacitor Generator Specs:

- 70 kV, 3.0 mA, 0.4 mm Focal Spot, autodial for time adjustment and easy scrolling
- Capacitor allows recharging in 30 seconds, set in magnetized cradle
- Veterinary specific display with audio and visual alarms
- Scatter radiation shield
- 1-year Limited Warranty



VetRay Digital Dental Sensor

SO High Tech – VetRay's Digital Dental Sensor, made by SOPIX®, X-RAY SYSTEMS INTEGRATE (FIBER-OPTIC BASED CMOS) technology and tapered corners

SO Clear – Consistent Imaging Quality

Introducing ACE TECHNOLOGY, patented research that Automatically Controls Exposures for optimal images preventing overexposure. Increases visualization of anatomy and pathology details

VetRay Digital Dental Sensor

Purchase a VetRay Digital Dental Sensor (Sopix®), get a **5 year warranty!***



*Limited Warranty protects against Mfr Defect after the 3 year limited warranty mfr defect on laptop line



I DENTAL DR SENSOR SPECIFICATIONS:

Active Area

Size #1 – 25 mm x 39 mm

Size #2 – 31 mm x 42 mm

Number of Pixels

Size #1 1.5 Millions of pixels

Size #2 2.21 Millions of pixels

Pixel Pitch: 20 μ m x 20 μ m

Resolution: 20 μ m

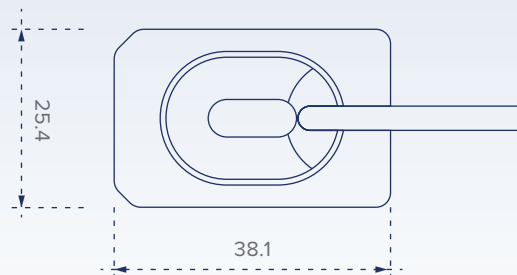
Grayscale (bit): 16,384 (14)

Connection: USB 2.0 / Bite Resistent Guard

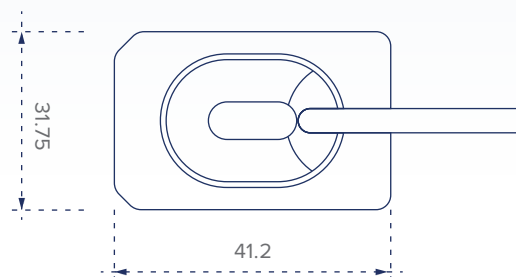
Cable length: 3.70 meters (12.1-ft) detector cable

3 year limited warranty mfr. defect on laptop

Size 1



Size 2



I HANDHELD X-RAY GENERATOR

Output Max.: 70 kV / 3.0 mA

Inherent Filtration: 0.8 mm AL Eq.

Total Filtration: 1.5 mm AL Eq.

Focal Spot: 0.4 mm

Cone Length: 20 cm

Weight: 4.8 lb

1 year Manufacturer's limited warranty

- Magnetized generator to base technology



*Optional: easy-to-carry
briefcase design*