

WARNING

The owner of this industrial building is subject to costly and unnecessary roof repairs, voided roof warranties, increased fire hazards, and excessive liability claims.



You have a problem.
We have a solution.

www.rooftopsolutions.com
800-913-7034



T

he **G2® Grease Guard® Rooftop Defense System®** protects your roofing system from the damaging effects of corrosive fats, greases, oils, chemicals or fluids that are discharged during routine manufacturing operations. Petroleum-based oils are used in numerous types of manufacturing facilities. Oil- and chemical-laden air is vented from the building and deposited onto the roof via exhaust fans or piped discharge applications. Motor oil or hydraulic fluid discharges are also commonly found on most industrial and manufacturing facility rooftops, under and around motors that power air conditioning systems and electric generators. The **G2® Grease Guard® Rooftop Defense System®** protects building owners and its occupants from costly roof repairs, voided roof warranties, unnecessary fire hazards, and excessive liability claims. It also helps you comply with OSHA, NFPA, and EPA regulations.

Examples of just a few of the manufacturing effluents that can substantially damage unprotected roofing systems include:



FOOD PROCESSING



ENGINE PRODUCTION OILS



CHEMICAL SOLVENTS



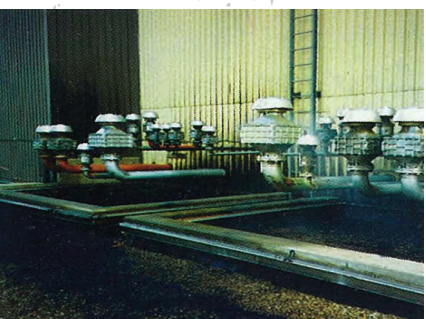
PLASTIC PRODUCTION



DIE CASTING LUBRICANTS



HVAC OIL DISCHARGES



POWER PLANT DIESEL



PAPER AND TEXTILE RESIDUE

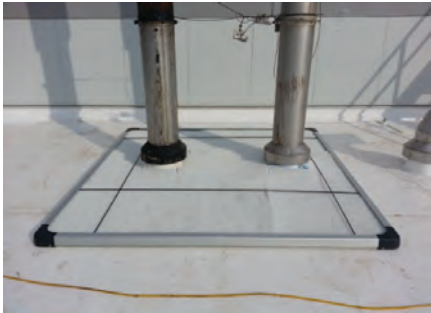


CAFETERIA OILS

The **G2° Grease Guard° XHD Rooftop Defense System°** is installed on the roof around any equipment that discharges fats, oils, greases, or chemicals. It prevents those discharges from saturating, and ultimately damaging, the roof membranes. The **G2° Grease Guard° XHD Rooftop Defense System°** patented Advanced Filter Composite® captures and absorbs all organic and inorganic greases and oils, numerous chemicals, and high volume animal fats found in industrial manufacturing and food processing plants.

G2° Grease Guard° XHD Rooftop Defense System° maintenance is quick and easy. For customers who to conduct their own maintenance, filter replacement may be performed by in-house maintenance personnel. We also have maintenance programs designed for your specific **G2° Grease Guard° XHD Rooftop Defense System°** installations. Our highly trained, professionally certified service technicians provide the necessary maintenance required for your specific applications.

Below are examples of completed installations for some of our already satisfied customers:



You have a problem.
We have a solution.

HOW THE G2® GREASE GUARD® XHD ROOFTOP DEFENSE SYSTEM® WORKS

Flashing Corner - molded from a UV stable co-polymer, and fastens directly to the flashing. Fits in the corner joining two pieces of flashing, providing a continuous perimeter that effectively deflects effluents directly into the filter system

Grease Deflecting Flashing- constructed from 22 gauge, rust resistant steel. Ensures effluents are directed into the filter system.

Anodized Aluminum Frame - complies with ASTM B-221. Rust resistant and light weight.

Fiberglass Hold Down Pole - for quick, easy, and secure installation. Holds filter system in place and prevents intrusion of filter operation.

Top Pre Filter - a pass through layer constructed of open polymers that allows passage of effluents and protects subsequent layers.

Hold Down Pole Connectors- keep poles in place and allow for easy pole removal during maintenance operations.

Molded Quick Connect Corners- made from co-polymers, the corners are corrosion and UV resistant. They snap together for fast and efficient building of the frame.

Advanced Filter Composite® - constructed from an engineered open cell fabric containing nearly 100 layers of absorbent microfibers that wick and contain oil-based fluids, while repelling rainwater.

Transfer Layer- designed for quick transfer of oil based fluids to the absorption layers (AFC). Also offers UV protection to the subsequent layers.

Fireshield - a fire retardant layer built to provide fire resistance. Helps prevent captured effluent from becoming fuel to a fire.

Air Flow Layer - allows free passage of air and water from the system creating proper circulation.

Barrier Layer- provides a leak proof barrier and acts as a "last line" of defense in the event the absorption layers surpass their capacity.

TAKE THE FIRST STEP TOWARD SAFEGUARDING YOUR ROOFING INVESTMENT TODAY!

www.rooftopsolutions.com
800-913-7034

