

Grease Guard for Design & Construction Teams

Assuring Your Rooftop is Protected From the Harmful Effects of Grease Long After Your Project is Finished

MECHANICAL EQUIPMENT SCHEDULE

ROOFTOP HVAC UNIT SCHEDULE #RTU-1 - (SUPPLY, INSTALLATION & COMMISSIONING BY LANDLORD CONTRACTOR)

BASE BID: LENNOX

ALTERNATE: CARRIER, TRANE. (WITH THE SAME FEATURES & ACCESSORIES)

LENNOX MODEL LGH102H4M, WITH MULTI-STAGED AIR VOLUME (MSAV) VFD TO ASHRAE 90.1-2013, 8.50 TON TOTAL COOLING, 2-STAGE COOLING, 240,000 BTU/HR GAS HEATING INPUT, 2-STAGE HEATING, 3,400 CFM @ 0.80" ESP, 2 HP SUPPLY FAN MOTOR, 60/3/208 VOLT, MCA = 38 A, MOCP = 45 A., C/W MULTI-STAGED AIR VOLUME (MSAV) VFD, 18" H. ROOF CURB, ENVIRON COIL SYSTEM, SINGLE ENTHALPY ECONOMIZER WITH HOOD, HIGH PERFORMANCE ECONOMIZER, BAROMETRIC RELIEF WITH HOOD, MOTORIZED OUTSIDE AIR DAMPER, FRESH AIR TEMPERING, AIR INTAKE AND RELIEF HOODS, STAINLESS STEEL HEAT EXCHANGER, 2" THICK MERV4 FILTERS, PROGRAMMABLE THERMOSTAT WITH GUARD, REMOTE SPACE TEMPERATURE SENSOR, WP DISCONNECT SWITCH, AIR VOLUME TO MEET ASHRAE 90.1-2013, SUPPLY FAN BELT AUTO TENSIONER, HINGED ACCESS DOOR, MSAV BLOWER BYPASS, HAIL GUARD, COPPER DRAIN TRAP KIT, GFCI OUTLET WITH COVER, R-410A REFRIGERANT, AND PHASE MONITOR

ROOFTOP MAKE-UP AIR UNIT SCHEDULE #MUA -(BY CONTRACTOR)

BASE BID: ENGINEERED AIR

(CLIENT SPECIFIC CUSTOM UNIT. FOR FURTHER DETAILS CONSULT WITH ENG A ASSIGNED SALES REPRESENTATIVE IN

NO ALTERNATES PERMITTED

ENGINEERED AIR MODEL FWE82/HE27/O DIRECT GAS FIRED WITH BUILT-IN COOLING. 255,000 BTU/HR, INLET PRESSURE 7"WC, TEMPERATURE RISE 93 C, MTRAC DISCHARGE AIR CONTROL, INTEGRAL LOW LIMIT AUTO BYPASS SET AT 40 F, 102,800 BTU/HR COOLING CAPACITY (ENT AIR 85 F/71 F, LEAVING AIR 58.40 F/57.70 F, DUAL COMPRESSORS, MECHANICAL COOLING HAS 2 ROOM CONTROL STAGES, AND OPERATES DOWN TO 65 F, 2,285 CFM @ 0.60" ESP, 2 HP MOTOR. 60/3/208 VOLT, MCA = 44.20 A, MOCP = 50 A., UNIT SHALL BE C/W FILTERS, HINGED ACCESS DOORS WITH CAM LOCKS, BOTTOM DISCHARGE, 18" H. ROOF CURB, FILTER INLET HOOD WITH BIRD SCREEN, WP DISCONNECT SWITCH, 6" X 8" REMOTE WALL MOUNTED PANEL WITH LAMACOID FACE, LIGHTS, SWITCHES, D/A SET POINT ADJUSTMENT DIAL, NON-PROGRAMMABLE THERMOSTAT, AND INTERLOCK CONTACTS FOR TWO EXHAUST FANS.

EXHAUST FAN SCHEDULE

FAN NO.	TAG	FAN MODEL	GREASE GUARD TYPE
EF1	GRILL	CASRE	GG XD 66X99 STANDARD
EF2	FRYER	NCA-FA	GG XD 66X66 STANDARD

ALTERNATE FAN SCHEDULE

FAN NO.	TAG	FAN MODEL	GREASE GUARD TYPE
3	MUA1	SER. A	
4	BR	DR-HFA	

ALL KITCHEN EXHAUST FANS TO INCLUDE GREASE GUARD ROOFTOP DEFENSE SYSTEMS. CALL GREASE GUARD AT 1-800-913-7034 FOR MORE DETAILS.



OVERVIEW

Including Grease Guard in your building drawings and specifications ensures that your building's rooftop is protected against the harmful effects of grease. That includes fire hazards, slip and fall accidents, roof damage, damage to the environment, harm to wild life, pollution of water supplies, and much more!

Include Grease Guard in your "specs"!

Visit
www.greaseguard.com
 for full architectural drawings in
 .STEP
 .CAD, &
 .PDF!



Project:
 Rooftop Solutions Cafe
 2019 Corporate Lane. Suite 119
 Naperville, IL 60563

Title:
 Roof Plan Grease Containment

Project Number:
 8009137034

Page Number:

M-4 OF 6



NEW BUILDING CONCERNS



Safety Issues



Fire Hazards



Unforeseen Expenses

As architects, facilities managers, property managers, or anyone else whose job it is to protect the company's investments, you need to know that fats, oils, and greases (FOGs) are on the rooftops above your commercial kitchens. These FOGs can cause numerous hardships that no one in any company should have to experience. This includes the liability of someone slipping and falling off of your roof access ladder, a grease fueled fire in your kitchen destroying the building, or the unforeseen expenses caused by unexpected fines from a landlord. Not to mention the potential for someone being hurt physically, which can have long term negative impacts for you, your company, and the communities you service.

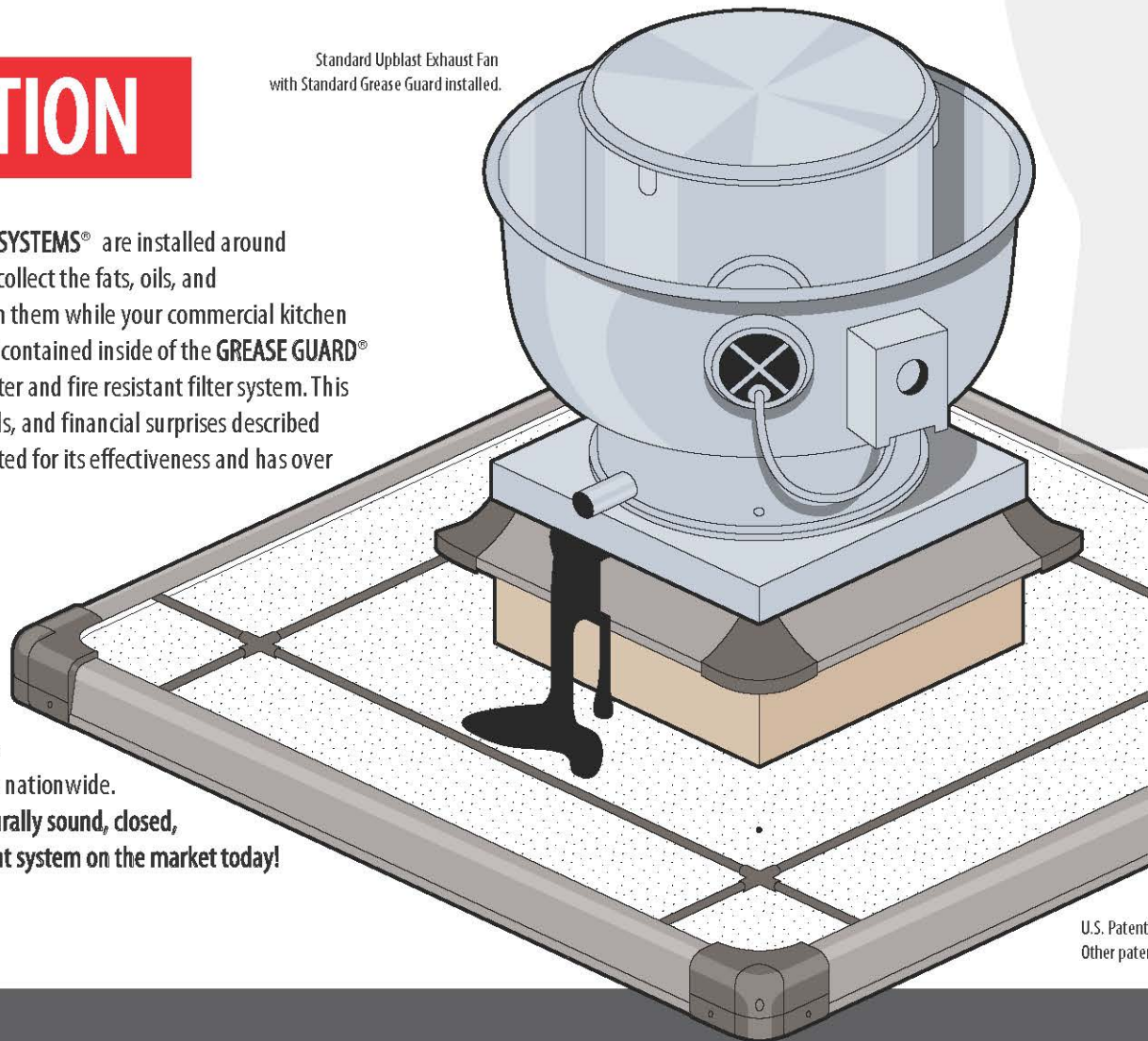
OUR SOLUTION

GREASE GUARD® ROOFTOP DEFENSE SYSTEMS® are installed around your rooftop kitchen exhaust fans to collect the fats, oils, and greases (FOGs) being discharged from them while your commercial kitchen operates. The FOGs are absorbed and contained inside of the **GREASE GUARD®** where they are safely kept by our water and fire resistant filter system. This prevents the safety issues, fire hazards, and financial surprises described above. The **GREASE GUARD®** is UL Listed for its effectiveness and has over 25 years of experience in action.

We work hard to ensure our products and services are the best in the country, and that commitment to excellence is why we are currently on over 20,000 rooftops nationwide. **This is the most oil absorbent, structurally sound, closed, and listed rooftop grease containment system on the market today!**

WE GUARANTEE IT!

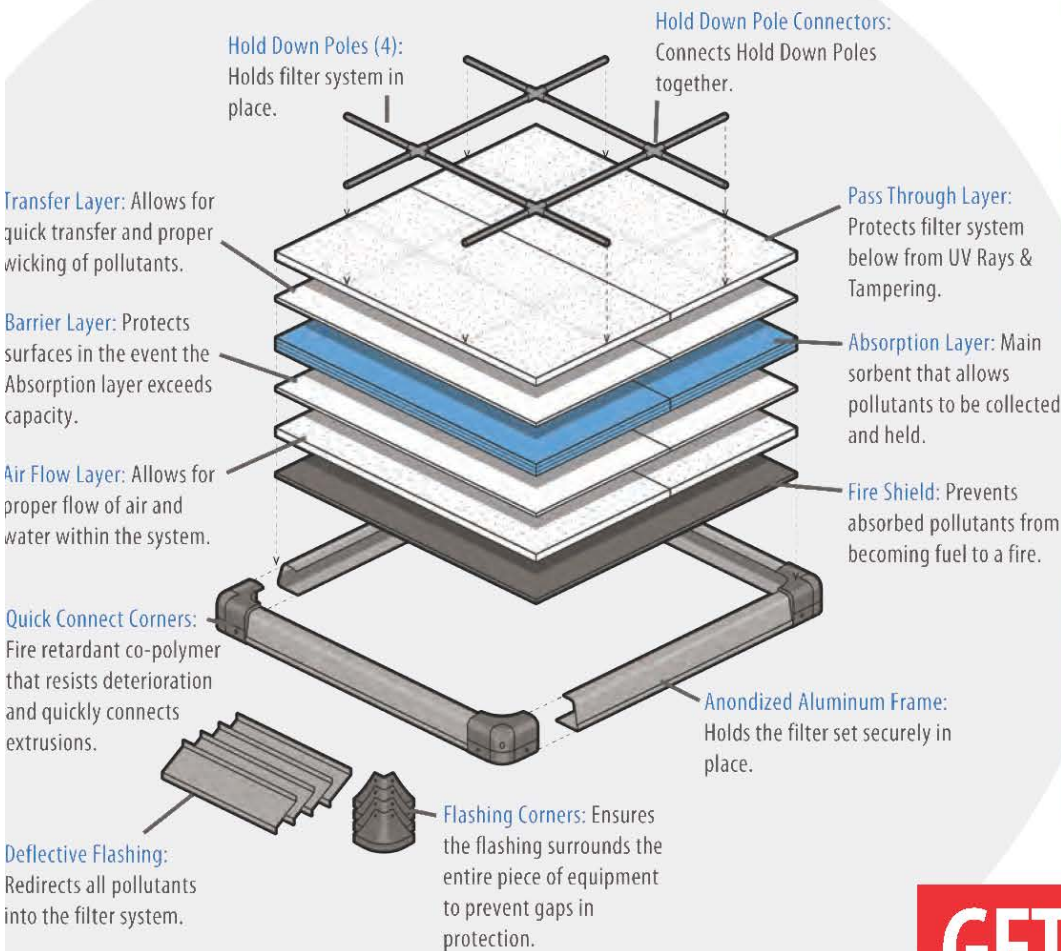
Standard Upblast Exhaust Fan
with Standard Grease Guard installed.



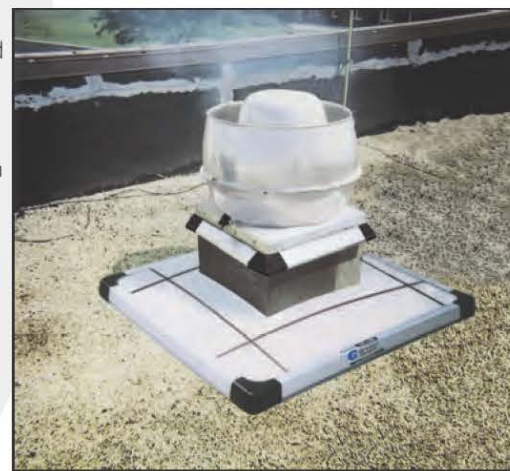
U.S. Patent
Other patents

QUESTIONS? NEED GREASE GUARDS? CALL US AT 1-800-913-7034

HOW IT WORKS



BEFORE & AFTER



GETTING STARTED



Grease Guards can be configured to any size to meet the demands of any exhaust fan type or roofing application. In order to ensure your issues are handled correctly, we need to determine your specific configurations and build a program tailored to those needs. This can be accomplished through photos and measurements of your exhaust equipment taken by your team, a contractor, or directly from your blueprint. We will take it from there by assigning a dedicated sales team member! **Already have pictures and measurements? Send them to sales@rooftopsolutions.com.**

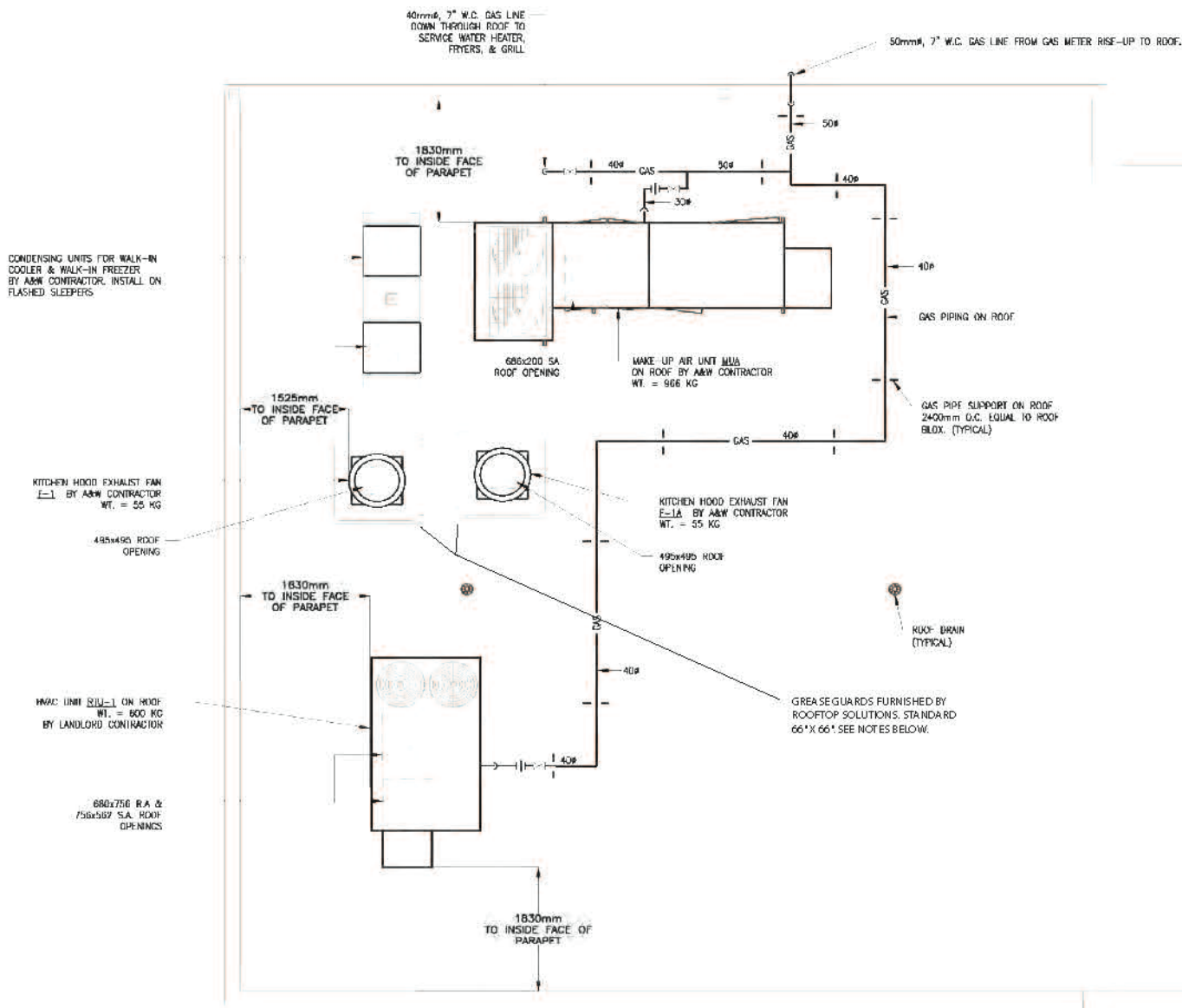
We Help You Comply

National Fire Protection Association (NFPA) - NFPA 96 Standard for Ventilation Control and Fire Protection of Commercial Cooking Operations states: 4-8.2.1 Rooftop termination shall be arranged with or provided with the following: "...(c) the ability to drain grease out of any traps or low points formed in the fan or duct near the termination of the system into a collection container that is non-combustible, closed, rainproof, structurally sound for the service to which it is applied, and will not sustain combustion. A grease collection device that is applied to the exhaust system shall not inhibit the performance of any fan.

*Reprinted with permission from NFPA 96, Standard for Ventilation Control and Fire Protection of Commercial Cooking Operations. National Fire Protection Agency, Quincy, MA 02169. The reprinted material is not the complete and official position of the National Fire Protection Association, on the referenced subject which is represented only by the standard in its entirety.

No's : 5,196,040 and 5,318,607.
nts pending.

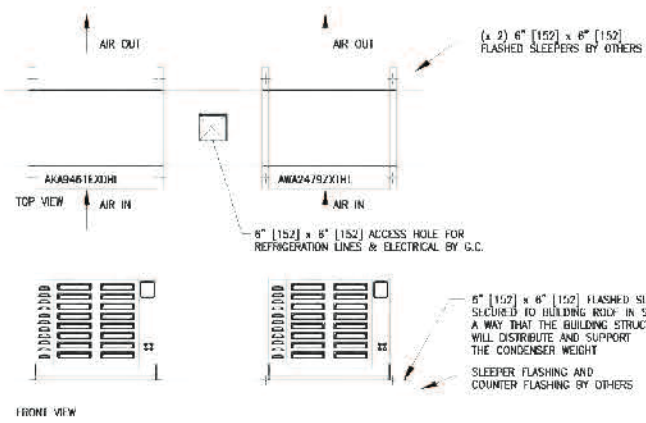
FOR FULL SPEC DOCUMENTS, VISIT WWW.GREASEGUARD.COM



ROOF PLAN - MECHANICAL
SCALE 1:50

IMPORTANT NOTE:
CONTRACTOR TO FURNISH G2 GREASE GUARD ROOFTOP DEFENSE SYSTEMS AROUND BOTH EXHAUST FANS. CALL GREASE GUARD AT 1-800-913-7034 FOR MORE INFORMATION.

EXHAUST FAN/GREASE GUARD PROFILE



OUTDOOR CONDENSING UNIT DETAIL
N.T.S.

