

Technical data

MM1018 FL		#1866
Pot life (+20°C) [minutes]		89
Curing (+20°C) [hours]		24
Maximum pressure resistance [N/mm ²]		161
E-Modul [N/mm ²]		10.000
Specific weight [g/cm ³]		2,66
Heat expansion coefficient [1/K]		0.00002
Static friction coefficient		> 0,5 (see sep. list)
Chemical resistance		very good (see sep. list)
Temperature resistance permanent [°C]		160
Viscosity [mPas]		16.900
Processing temperature [°C]		+5 to +30
Material temperature component surface		+5 to +40
Mixing ratio	Component A Component B	21,3 1
Threshold pressure resistance up to 10 million load cycles		

For 130 years, DIAMANT has been the internationally proven full-service provider of innovative polymer polymer systems and coatings. With the "Made in Germany" seal, we guarantee you the high quality that is documented by DIN EN ISO 9001 and DIN EN ISO 14001 certification.



DIAMANT Polymer GmbH
Marie-Bernays-Ring 3a
41199 Mönchengladbach | Germany
Phone +49 2166 - 98 36 - 0
Fax +49 2166 - 8 30 25
info@diamant-polymer.de

www.diamant-polymer.de



MM1018 FL



MM1018 FL

THE LIQUID SHIM®

100% GAP COMPENSATION

In one work step. Without mechanical processing.
Faster and more cost-effective than conventional
lining sheets or wedge plates.

It always fits!

DIA-EN-FL-MM1018-FL-2025-01-28



Planning reliability

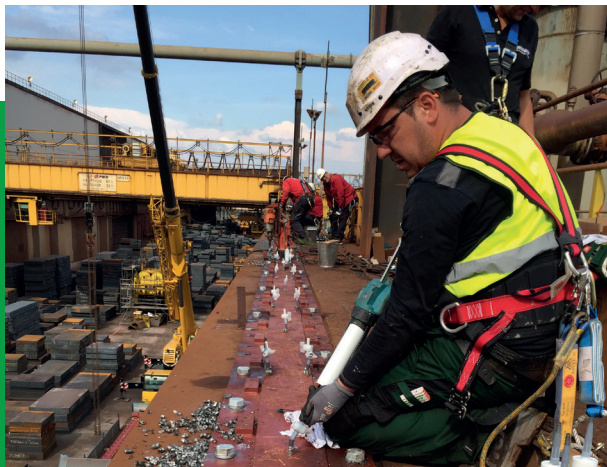
- MM1018 fulfils all requirements according to Eurocode 1090-2
- General building authority approval of the DIBt

Your benefits at a glance

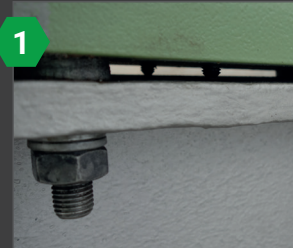
- Cost and time savings during installation
- Flexible use, always fits
- Problem-free building approval

Characteristics

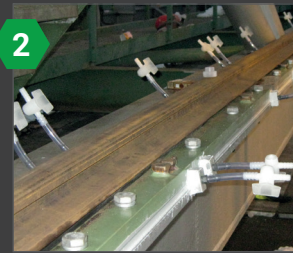
- No mechanical processing necessary
- 100% frictional connection
- Prevents crevice corrosion
- High chemical resistance, Seawater resistant
- Vibration-damping
- High compressive strength
- Low creep
- Tested fatigue strength
- Reach-compliant
- Used successfully 1,000 times



How is MM1018 used?



Gap between
slat and support.



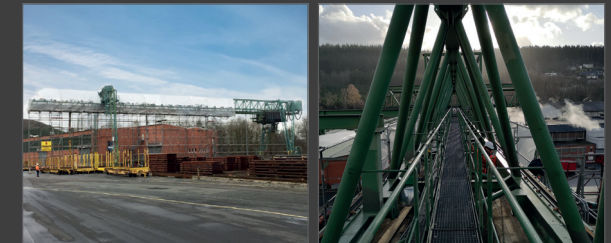
Injection points have been
placed and MM1018 FL
has been injected.



Hose connection elements
are removed, the gap is
completely filled.

Gap and tolerance compensation on

- Steel connections
- Columns, supporting pillars
- Crane rails
- Crane brackets
- Prestressed connections
- Construction in existing buildings (new on old)



Qualification & Service

To ensure the best possible quality and error free application, we offer the following services:

- Product training
- Construction site supervision and monitoring
- Complete realisation of the work by our experienced application technicians

