



'E'-Mail
Emmanuel Lutheran Church
Second Sunday of Advent

December 7, 2025

Serving the Community since September 1945

*"Welcoming all people, Emmanuel Lutheran Church and schools
love, teach, and serve through Christ."*

[Emmanuel
Website](#)

[Laurel Hall
Website](#)

[Sign Up for
Newsletter](#)

[Sunday
Bulletin](#)

[Sign Up for
Laurel Hall
Buzz](#)

[Emmanuel
Lutheran
Foundation ELF](#)

December



Trombone Christmas Sunday, December 14, 7pm

The annual **Trombone Christmas** concert is almost here! More than 50 of LA's best trombonists play special arrangements of everyone's favorite Christmas music. It really is amazing – not to be missed. The concert is free, with an offering received going toward the Musicians Foundation, helping professional musicians in need.

Emmanuel Friends of Music will be hosting a post-concert reception for the artists and audience. We would appreciate any refreshments you would be willing to donate to enhance our reception. Examples include chocolate salami (a big hit last year!), spinach dip, mixed nuts, homemade cookies, and fresh fruit. (Fruit avoids issues with gluten, dairy and most other common allergens.) Store-bought holiday cookies or cupcakes are always welcome as part of our spread. Contact Denise Vanzago at: dmvanzago@gmail.com. **818-845-0149** home or **818-636-2440** cell.

Please drop off your goodies after 12/14 morning worship or between 6:00PM-6:30PM the evening of the concert. Mark items: "Concert."

Thank you for generously supporting this event!



Celebrate Christmas with neighbors and friends at Emmanuel. Wednesday, December 24, 5:00 – 6:00 P.M

Christmas Eve Family Celebration includes: A Living Nativity, Carols, Candles, and our adult and children's choir.

Following service, we will have fellowship with coffee, warm cider, carols, and Christmas cookies in the reception room. Wednesday, December 24, 5:00 – 6:00 P.M. All are welcome, come as you are, invite a friend!

Download the [Prayer Ventures here](#) for December 2025. These petitions are offered as guides to prayer each day of the month for global, social and outreach ministries of the ELCA, as well as for the needs and circumstances of our neighbors, communities and world.



Jesus' 12 Disciples—A New Adult Bible



In the month of December the Adult Bible Study Class will be studying Jesus' disciple John. We look forward to learning more about the beloved disciple in the coming weeks. Join us on Sunday mornings at 9 AM.

Thank you, Liz\\

Message
Pastor Rick Hall
Minister of Music
Mark Longfield
Organist
Andy Gladbach
Greeter
Brian Hollowaty
Communion
Assistants
George Watson
Bonnie Koch
Diana Howison
CaroleJean Willis
Darlene Michener
Lector
Mark Garland
Usher
Terri Lau
Morgan Loy
Gaffer
Marshall Bowen
Sound
Bob Akin
Live Stream
Jessie Toby

The Handcrafts Group will meet Sunday, December 14, at 1:00pm in Emmanuel's conference room in the Administrative Wing. We are looking forward to seeing you there. If you have any questions, please contact [Diana Howison](#)



Birthdays

- 4) Stephanie Loy
- 7) George Watson
Ken Wilcox
- 8) Amber Schaeffer
- 11) Rheanna Osborne
Jeff Thorsen

ELATE

Don't miss this funny, touching, musical look at Jesus' birth, *The Bethlehem Project*. The dates are Friday, Dec. 5 and Saturday, Dec. 6 at 8 pm and Sunday, Dec. 7 at 2 pm at Emmanuel Lutheran Church.

You won't want to miss this interesting way of sharing our important story of the birth of Our Lord Jesus Christ.



Join us for the World Premiere of:

***The Bethlehem Project*,**

a new musical comedy in an interview-style straight from the characters who were there prior to, during, and after the birth of Jesus.

A prequel to *The Golgotha Project*. written by Jeff Zimmer, *The Bethlehem Project* includes music composed by Mike Renneker.

Zimmer wrote and directed "The Golgotha Project," of the last week of Jesus' life and resurrection.

The Bethlehem Project will inspire you! Join us for a fun-filled way to look at Jesus' birth

Fri., Dec. 5 and Sat., Dec. 6 -- 8 p.m. Sun., Dec. 7 -- 2 p.m. in the Lincoln Stegman theatre. Tickets are \$15.00 per person.

Each of you should give
what you have decided
in your heart to give,
not reluctantly
or under compulsion,
for God loves a cheerful giver.

2 Corinthians 9:7

DailyVerses.net



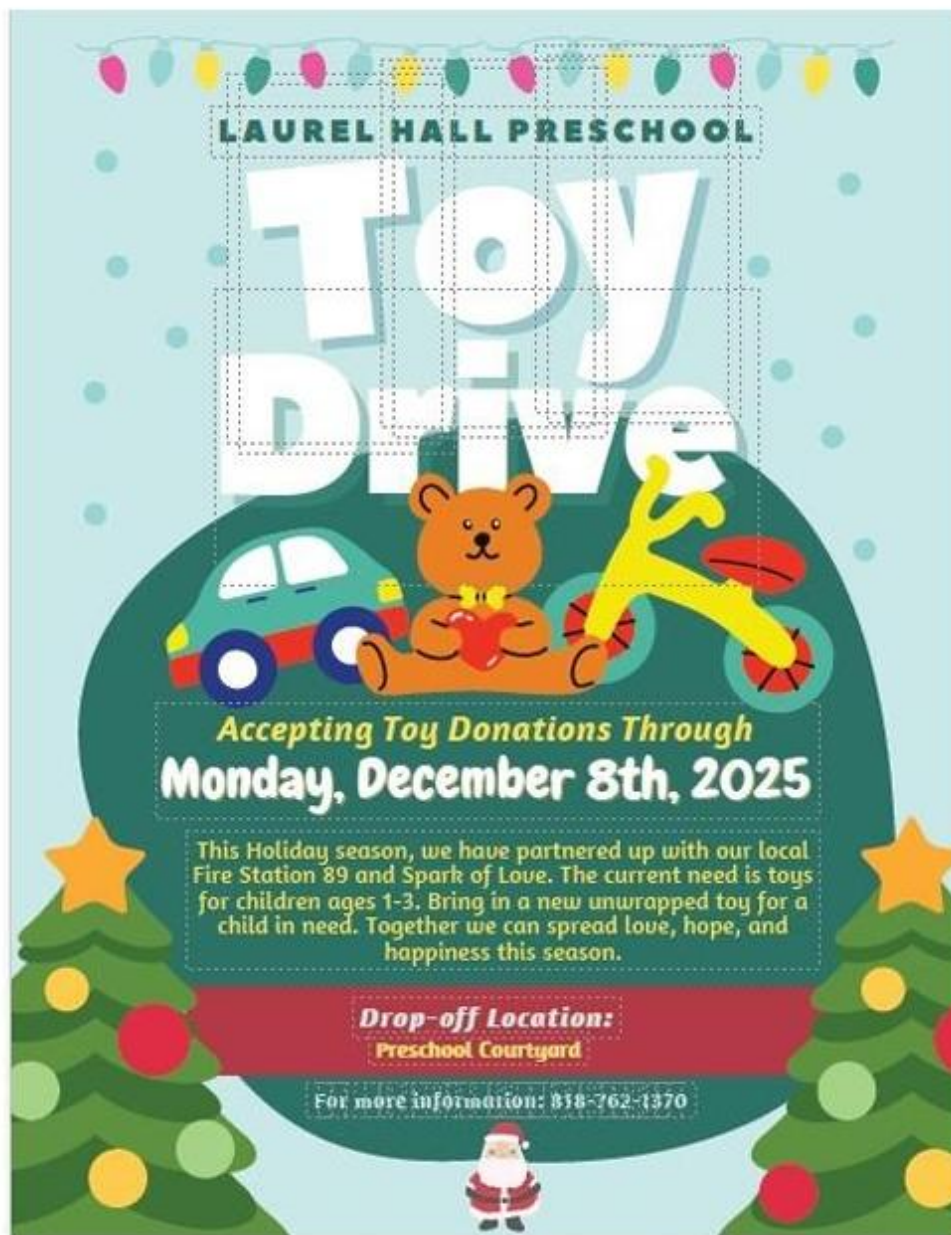
Sharing Our Abundant Blessings

At this time of year, we are counting our blessings, and at the top of that list is you - the people of Emmanuel Lutheran Church and Schools. Without you and your generous financial support, we simply couldn't make a significant impact on the lives of those we serve. Thank you!

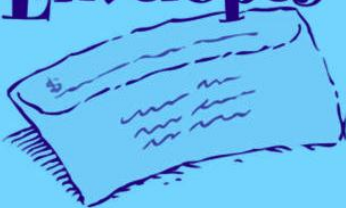
As we enter the giving season, we ask you to continue to give abundantly by making a year-end gift to continue our ELC and school communities. There are many ways to help support ELC, Laurel Hall School, and Laurel Hall Preschool -

- Attend one or all the upcoming services or seasonal events. Your offerings support our ministries.
- Gifts of cash can be placed in the offering plates or mailed to the church.
- Donations may be made online at elcnoho.org. When the page loads, click on the "Give to Emmanuel" button in the upper right corner of the page.
- Thrivent Choice Dollars can be directed to Emmanuel Lutheran Church, Laurel Hall School, and Laurel Hall Preschool.
- Gifts of appreciated stock may be transferred at any time. Please call the Business Office for more details.
- Qualified Charitable Distributions (QCD), sometimes called an IRA Charitable Rollover, enables a donor to give up to \$108,000 from a traditional IRA or a Roth IRA each year directly to ELC or the schools. The distribution counts toward the IRA owner's required minimum distribution (RMD) for the year and will not be included in the owner's adjusted gross income for the year. This is a great way for you to avoid paying taxes on your RMD, while supporting ministries you care about.

*Blessings,
Diana Howison
ELC Financial Secretary*



Offering Envelopes



Envelopes for 2026 are ready to be picked up in the Narthex. Please begin using them in no earlier than January 2026 because your box of 2026 envelopes may be a different number than your box of 2025 envelopes. Also, please do not use 2025 envelopes after December 31, 2025. If you do not see your name and would like envelopes, please contact Diana Howison at diana_howison@sbcglobal.net

As the 2025 calendar year comes to a close, please remember that all 2025 contributions need to be in the offering plate by Sunday, December 28, made through the online portal no later than December 31,

post-marked no later than December 31 for correct recording. Thank you for your faithful stewardship; this is how our ministry continues.

Confirmation Classes

This year we are partnering with other churches in the Twin Valley Conference to teach Confirmation classes. Classes are held on Sunday afternoons from 1:30-3:30pm at differing locations and churches throughout the Conference. Classes will only be once a month and will run until May.



If you are in the 6-8th grade and want to attend or if you are the parent of a middle schooler who wants their kiddo to attend, please contact Pastor Rick at: rhall@elcnoho.org; or call the church 818-761-6124; or catch him on Sunday. It should be an exciting year of learning as we will focus on: **What does it mean to be Lutheran?**

We Pray For...



Prayer List ...

Nesbitt Blaisdell,
Bob Boehman
Mike Cosenza
Ruthanne Henderson
The Hodge Family
Rick Holt
Dick Krussow
Kimberly Laux
Samuel Lee
Lillie Lim
Leo Lujan
Jim & Karen Ohrt
Lumina Padron-Sanchez
Donna Stenberg
& family
Pam Sullivan
Denise Vanzago
Muriel Waugh

We pray for those newly added to the Prayer List...

Kimberly Laux
Mary Ann Manore

.Shut-ins:

Karen Bollesen;
Gloria Blackman;
Jim & Marie Crawford
Bill Hoffman;
Ernine Larson;
Bernadine Poulsen;
Mavien Ready;
Thorsen Family

...Mission Concerns:

ELC sponsored
missionaries around
the world;
California Lutheran University;
ELCA World Relief

... in Military Service:

Bryce Anderson;
Joshua Camarena
Aaron Carpenter;
Marc Gonsalves;
Curtis Haines;
Daniel Lukavsky;
David Lukavsky;
Tyler Stefansen
Austin Swanson;
Jeremy Stephens;
Keaton Wriedt

Prayer of the Day: Stir up your power, Lord Christ, and come. By your merciful protection save us from the threatening dangers of our sins, and enlighten our walk in the way of your salvation, for you live and reign with the Father and the Holy Spirit, one God, now and forever.

Christmas Giving

Dear Friends and Families of Laurel Hall Schools,
One of our National Junior Honor Society (NJHS) 8th grade students, Faye Olsson, is hosting a Collection Drive from December 8-12, for My Friend's Place, a drop-in day shelter that provides homeless youth (ages 12-24) with their most immediate needs.

We are gathering:

- • Nonperishable snacks
- • Gently worn adult-sized clothing
- • Backpacks
- • New Blankets
- • Monetary donations (by QR code below only)

Every contribution will make a meaningful difference in the lives of homeless youth.

Thank you in advance for your support. Please contact Ms. Lopez (NJHS Advisor) at llopez@laurelhall.com or Faye Olsson at fayeolsson@student.laurelhall.org with any questions.

*With gratitude,
Laurel Hall National Junior Honor Society*



WE NEED YOUR HELP
COLLECTION DRIVE
FOR HOMELESS YOUTH

Drop off your items
December 8th - 12th

Donation bins are located in the classrooms
and the Laurel Hall Main Office
On December 12th you can also drop off at
morning carline

We need the following items:

- ✓ **Non Perishable Snacks (Individually Wrapped)**
 - Trail mix
 - Granola bars
 - Cookies
 - Chips
 - Fruit snacks
 - Water bottles
 - Juice
- ✓ **Items Needed**
 - Unisex or masculine **adult sized** clothing (gently used or new)
 - Backpacks (gently used or new)
 - Blankets (new **only**)
 - Monetary donations (Every dollar counts!) Scan below
- ✓ **Your Impact:**

Every item donated helps someone face the cold with dignity and hope. By giving what you can, you are sharing warmth and kindness with those who need it most.

For questions, contact organizer,
Faye Olsson (LHS 8th grade student)
fayeolsson@student.laurelhall.org


\$ Donation



We need helping hands to pack more bags! We are asking people for an hour or two of their time to pack bags at Temple Beth Hillel. Check out some of the ways you can volunteer below. Then visit our website, NHIFP.org, go to the tab "Sign Up Genius" to help out!

Transportation Team transports the loaded grocery bags from the packing site at Temple Beth Hillel to the food distribution site at First Christian Church. Sign up to help out here: [North Hollywood Interfaith Food Pantry: Transport bags from Temple to new pantry and/or unload truck \(signupgenius.com\)](http://NorthHollywoodInterfaithFoodPantry.org/signupgenius.com)

Packing Team fills the bags and sorts them in the basement of Temple Beth Hillel. Sign up to help out here: [North Hollywood Interfaith Food Pantry: Pack Bags at the Temple OR at Distribution - CHECK LOCATION ADDRESS! \(signupgenius.com\)](http://NorthHollywoodInterfaithFoodPantry.org/signupgenius.com)

Sack Lunches Team makes sack lunches at home and delivers them to the First Christian Church. Sign up to help out here: [North Hollywood Interfaith Food Pantry: Provide sack lunches - make at home and deliver \(signupgenius.com\)](http://NorthHollywoodInterfaithFoodPantry.org/signupgenius.com)

Please place your groceries in the food collection box in the narthex and they will be delivered to Temple Beth Hillel.

Got extra grocery bags? If you've got gently used paper or plastic bags taking up space in your pantry, we'd love to give them a second life! Drop off whatever you can spare at our distribution site—we'll put them to good use.

Other ways you can help us is by shopping from our [Amazon Wish List](#)

FOOD ASKS OF THE MONTH



We always need cat and dog food (wet or dry).

Please donate cans of hearty soups and chili.



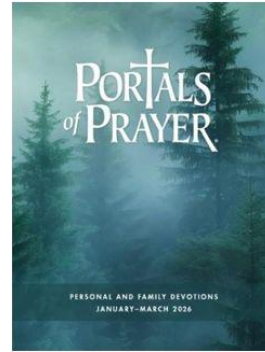
Drop off food donations at:

Our Distribution Site
- **Mondays and Fridays**
between 7:30AM-11:00
(11634 Moorpark St. -1/2 block east of Colfax)

Temple Beth Hillel (enter off Laurelgrove) **Mondays-Fridays, 4:00-5:00PM** please donate cans of hearty soups and chili.

Next Quarter Devotionals Available

Devotional booklets are available in the literature rack in the church narthex, **Portals of Prayer** and **Christ in our Home** each covering one quarter of 2025. **Spark** is available in limited number. In this magazine style devotional book **Spark**, there are activities and stories to lead everyone in the family through the season. Finally, **The Word in Season** is also available. Pick up any of these in the narthex today! Pick these up at no charge. They are our gift to help you.



[Give Now](#)

The link takes you directly to our giving page. If you have questions about any giving options, you may benefit from watching this tutorial on safely donating online: [Online Giving](#)

Please feel free to call the business office:
(818) 763-5434.



Southwest
California Synod
EVANGELICAL LUTHERAN
CHURCH IN AMERICA

[SoCalSynod](#)

Visit the synod website to check out upcoming events. Sign up to receive newsletters from the synod office.

[LSS](#)



See how [Lutheran Social Services](#) works and how you can make a donation. Your donations are essential. See a complete list of urgent local needs in this time of covid [here](#).

YOUR COUNCIL

President: Tom Reilly
Vice President: Sue Clauss
Secretary: Liz Rickertsen
Treasurer: Robert Akin
Financial Secretary: Diana Howison



Members at Large:

Marshall Bowen;
Aaron Kraft;
Michael Madolora
Angela Wiegand

For the Kids

+ Download Children's pages with stories, puzzles and quizzes based on the lessons for the week.

[Gospel page for 7+](#)
[Gospel pages 3-7](#)

[Gather Bible Study](#)

for
Women of the ELCA at
Emmanuel Lutheran

[Church Website](#)

There are several links in these online newsletters. Please let me know if any of them don't work for you. THANK YOU for your positive comments. I always welcome your input.

Sincerely,

[Marty McCambridge](#)

Emmanuel Lutheran Church
6020 Radford Avenue, North Hollywood, CA 91606
818-761-6124