



'E'-Mail
Emmanuel Lutheran Church
Easter

April 5, 2026

Serving the Community since September 1945

*"Welcoming all people, Emmanuel Lutheran Church and schools
love, teach, and serve through Christ."*

[Emmanuel
Website](#)

[Laurel Hall
Website](#)

[Sign Up for
Newsletter](#)

[Sunday
Bulletin](#)

[Sign Up for
Laurel Hall
Buzz](#)

[Emmanuel
Lutheran
Foundation ELF](#)

April 2026

Easter

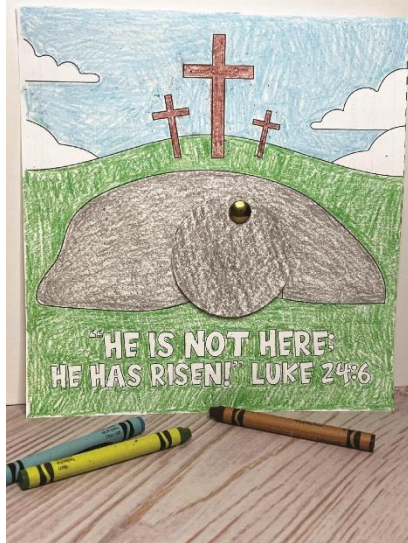


Bishop Brenda Bos Will Offer Video Sermon for the Sunday After Easter

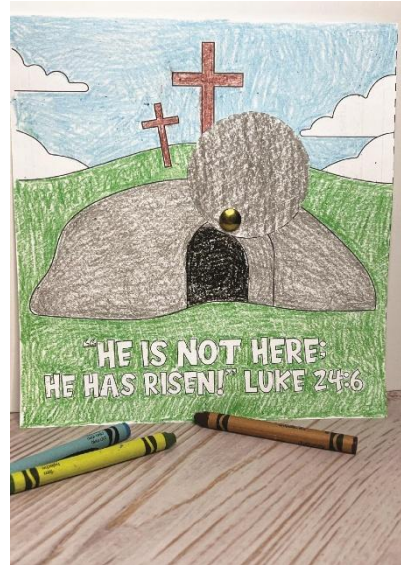
Bishop Bos will offer a video sermon for the Sunday after Easter. Congregations may use it in worship, or pastors or leaders may also view it for inspiration and personal reflection. Access details, including YouTube and Google Drive links, will be shared soon.



Children's Easter Craft Page



At first the rock covers the tomb, but when you swing it up and away you will see the empty tomb of Easter Sunday morning. Alleluia!



[Download the coloring page here.](#)

Color the page. Cut out the rock, then use a brad to attach it to the tomb as shown so you can make the picture active.

Join the Adult Bible Study to continue learning about the 12 Disciples of Jesus



Join us Sundays at 9:00 a.m. sharp and conclude at 9:45 to get ready for worship.

Our upcoming topics include:

Sunday, April 12 – The Women who followed Jesus – Mary, the mother of Jesus

Sunday, April 19 – The Women who followed Jesus – Martha & Mary

Message

Pastor Rick Hall

Minister of Music

Mark Longfield

Organist

Andy Gladbach

Greeter

Catherine Menton

Greeter

Darlene Michener

Communion

Assistant

Debby Semel

Diana Howison

Liz Rickertsen

CaroleJean Willis

Sylvia Ottemoeller

Lector

Erika Sieme

Usher

Terri Lau

Tom Reilly

Morgan Loy

Gaffer

Marshall Bowen

Sound

Stephen Howison

Live Stream

Bob Akin

Sunday, April 26 – The Women who followed Jesus – Mary Magdalene

Sunday, May 3 – The Women who followed Jesus – The Samaritan Woman (we heard about her in Pastor Rick's sermon on 3/8/26)!!

Sunday, May 10 – The Women who followed Jesus – Lydia

Our lively group always has room for more, as we learn about those closest to Jesus. See you on Sunday morning.

Birthdays

- 2) Abryelle Wilson
- 5) Dominic Todd Brown
- 6) Ella Hobson
- 7) Alex Reilly

Lutherans Invited to Godmothers of the Disappeared Prayer Vigil

WEEKLY PRAYER VIGIL
For Those Who have been Disappeared by I.C.E.
TUESDAY, APRIL 28TH
— **12NOON**
AND EVERY TUESDAY
12PM-1PM

Los Angeles Federal Building
300 N Los Angeles St,
Los Angeles, CA 90012

WE ARE GODMOTHERS OF THE DISAPPEARED — WOMEN OF FAITH GIVING VOICE TO THOSE TAKEN FROM US.

OFFICERS, YOUR MOTHERS ARE PLEADING WITH YOU: RELEASE OUR CHILDREN AND LAY DOWN YOUR WEAPONS NOW!

Join Bishop Bos and Lutheran leaders for a special *All Lutheran Prayer Vigil* with CLUE and community partners, standing in faith and solidarity for those who have been disappeared by ICE.

Tuesday, April 28, 2026, 12-1 p,m at the Los Angeles Federal Building, 300 N. Los Angeles St., Parking is available across the street from the building and we will gather on the sidewalk in front. The entire vigil lasts about an hour and concludes with prayer. This is a powerful Christian witness for all people.

A Message From Your Nominating Committee

We are looking for congregation members who would like to share their gifts and talents by serving on Council, the Nominating Committee (if you have been a member at least 2 years), or as Trustee on the Emmanuel Lutheran Foundation. If you are interested in serving for one of these positions or finding out more about the positions contact Sue Clauss; Nominating Committee Chair at sueelc@aol.com; talk to one of the other Nominating Committee Members. Read the full description of duties [HERE](#).



Open positions for 2026/2027 are President, Treasurer, two Members-At-Large on Council, two positions on Nominating Committee, and two positions on ELF. This is a great way to serve our community and our Lord as well as have fun working with other members of Emmanuel!

Nominating Committee Members: Chair: Sue Clauss, Bonnie Ericson, Kristen Longfield, Kathleen Marsden, and Sylvia Ottemoeller.

Directory



Dear Congregation Members, our Directory Task Force (Marshall Bowen, Terri Lau, Elsa Lewis, Adrienne Madolora and George Watson) have been hard at work reaching out via emails. We are asking for a confirmation of the way you would like your listing in the new Emmanuel pictorial directory. When you receive the email, please respond with any updated information. If you have not heard from us yet, you should be getting that email in the next week or so.

If you would prefer talking on the phone, please call **Elsa Lewis at (818) 590-5169**.

We would like a photo from everyone in the directory. A picture taken with your smartphone will work. Let us know if you would prefer us to arrange to have your photo taken on a Sunday morning. **Thanks for your help..**

Directory task force: Marshall Bowen, Chair, Terri Lau, Elsa Lewis, Adrienne Madolora and George Watson.



ELCA

Download the [Prayer Ventures here](#) for April 2026. These petitions are offered as guides to prayer each day of the month for global, social and outreach ministries of the ELCA, as well as for the needs and circumstances of our neighbors, communities and world.

We Pray For...



Prayer List ...

Nesbitt Blaisdell,
Bob Boehman
Mike Cosenza
Ruthanne Henderson
The Hodge Family
Dick Krussow
Kimberly Laux
Samuel Lee
Lillie Lim
Leo Lujan
Jim & Karen Ohrt
Lumina Padron-Sanchez
Pam Sullivan
Denise Vanzago
Vehling Family
Muriel Waugh

We pray for those newly added to the Prayer List....

Emerson Jones
Edie Lewis
Mary Ann Manore
Patrick Moya
Aaron Rockwell
CaroleJean Willis

.Shut-ins:

Karen Bollesen;
Gloria Blackman;
Jim & Marie Crawford
Bill Hoffman;
Ernine Larson;
Bernadine Poulsen;
Mavien Ready;
Thorsen Family

...Mission Concerns:

ELC sponsored missionaries around the world;
California Lutheran University;
ELCA World Relief

... in Military

Service: Bryce Anderson;
Joshua Camarena
Aaron Carpenter;
Marc Gonsalves;
Curtis Haines;
Daniel Lukavsky;
David Lukavsky;
Tyler Stefansen
Austin Swanson;
Jeremy Stephens;
Keaton Wriedt

Prayer of the Day: O God, you gave your only Son to suffer death on the cross for our redemption, and by his glorious resurrection you delivered us from the power of death. Make us die every day to sin, that we may live with him forever in the joy of the resurrection, through your Son, Jesus Christ our Lord, who lives and reigns with you and the Holy Spirit, one God, now and forever.



ELATE presents **Lettice and Lovage**, the story of a later in life friendship between the most unlikely humans. Lettice, an eccentric child of the theatre, and Lotte, the epitomes career women find common ground in Peter Shaffer's wonderful tale of worlds colliding. It's a joyous, laugh a minute way to remind ourselves that differences can be overcome, and anyone can become friends. Even if an axe happens to be involved. **Lettice and Lovage** runs April 17, 18, 19, 24, 25, 26 and May 1, 2, 3, Friday and Saturdays at 8pm, Sundays at 2pm in the Lincoln Stegman Theatre.

Tickets available for purchase at the door, online [here](#), or by calling 818-509-0882"

A Season of Renewal & Resolve



March brings longer days, warmer afternoons, and the first real signs of spring. There's a sense of forward motion this time of year, a reminder that growth and renewal are possible. At the pantry, that same spirit fuels our work.

Across Los Angeles County, many families are still feeling the strain of high housing costs, rising grocery prices, and wages that have not kept pace with the cost of living. Nearly one in four households continues to experience food insecurity. For parents, seniors, and working neighbors who are doing everything they can, that gap is real.

Spring invites us to step into action with fresh energy. It is a season to roll up our sleeves, strengthen our partnerships, and show up for our community with empathy and purpose. With your support, we continue to meet the need head on, making sure that as the weather warms, hope and stability grow right alongside it.

There is work to do, and we are ready for it together.

We need helping hands to pack more bags! We are asking people for an hour or two of their time to pack bags at Temple Beth Hillel. Check out some of the ways you can volunteer below. Then visit our website, NHIFP.org, go to the tab "Sign Up Genius" to help out!

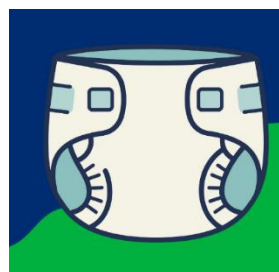
Transportation Team transports the loaded grocery bags from the packing site at Temple Beth Hillel to the food distribution site at First Christian Church. Sign up to help out here: [North Hollywood Interfaith Food Pantry: Transport bags from Temple to new pantry and/or unload truck \(signupgenius.com\)](http://NorthHollywoodInterfaithFoodPantry.org)

Packing Team fills the bags and sorts them in the basement of Temple Beth Hillel. Sign up to help out here: [North Hollywood Interfaith Food Pantry: Pack Bags at the Temple OR at Distribution - CHECK LOCATION ADDRESS! \(signupgenius.com\)](http://NorthHollywoodInterfaithFoodPantry.org)



This month, we are especially
in need of **DRY CAT
FOOD** and **WET DOG FOOD**.

Diapers Needed!
Please donate
Sizes 5-7



DROP OFF LOCATIONS:

NHIFP DISTRIBUTION

11634 Moorpark Street, Studio City
(1/2 block east of Colfax)
Mondays and Fridays between 7:30 AM - 11:00 AM

TEMPLE BETH HILLEL

12326 Riverside Drive, Valley Village
(enter off Laurelgrove)
Mondays and Fridays between 4:00 PM - 5:00 PM

GOT EXTRA GROCERY BAGS?

If you've got gently used paper or plastic bags taking up space in your pantry, we'd love to give them a second life! Drop them at our distribution site Mondays and Fridays between 7:30 AM and 11:00AM —we'll put them to good use!
Plastic bags are especially appreciated.

Next Quarter Devotionals Available

Devotional booklets are available in the literature rack in the church narthex, **Portals of Prayer** and **Christ in our Home** each covering one quarter of 2026. **Spark** is available in limited number. In this magazine style devotional book **Spark**, there are activities and stories to lead everyone in the family through the season. Finally, **The Word in Season** is also available. Pick up any of these in the narthex today! These are offered for you at no charge. They are our gift to help you.



[Give Now](#)

The link takes you directly to our giving page. If you have questions about any giving options, you may benefit from watching this tutorial on safely donating online: [Online Giving](#)

Please feel free to call the business office:
(818) 763-5434.



[SoCalSynod](#)

Visit the synod website to check out upcoming events. Sign up to receive newsletters from the synod office.

[LSS](#)



See how [Lutheran Social Services](#) works and how you can make a donation. Your donations are essential. See a complete list of urgent local needs in this time of covid [here](#).

YOUR COUNCIL

President: Tom Reilly
Vice President: Sue Clauss
Secretary: Liz Rickertsen
Treasurer: Robert Akin
Financial Secretary: Diana Howison

Members at Large:
Marshall Bowen;
Aaron Kraft;
Michael Madolora
Angela Wiegand



For the Kids
+ **Download Children's pages** with stories, puzzles and quizzes based on the lessons for the week.
[Gospel page for 7+](#)
[Gospel pages 3-7](#)

[Gather Bible Study](#)

for
Women of the ELCA at
Emmanuel Lutheran

[Church Website](#)

There are several links in these online newsletters. Please let me know if any of them don't work for you. THANK YOU for your positive comments. I always welcome your input.

Sincerely,
[Marty McCambridge](#)
Emmanuel Lutheran Church
6020 Radford Avenue, North Hollywood, CA 91606
818-761-6124