



'E'-Mail
Emmanuel Lutheran Church
Maundy Thursday

April 2, 2026

Serving the Community since September 1945

*"Welcoming all people, Emmanuel Lutheran Church and schools
love, teach, and serve through Christ."*

[Emmanuel
Website](#)

[Laurel Hall
Website](#)

[Sign Up for
Newsletter](#)

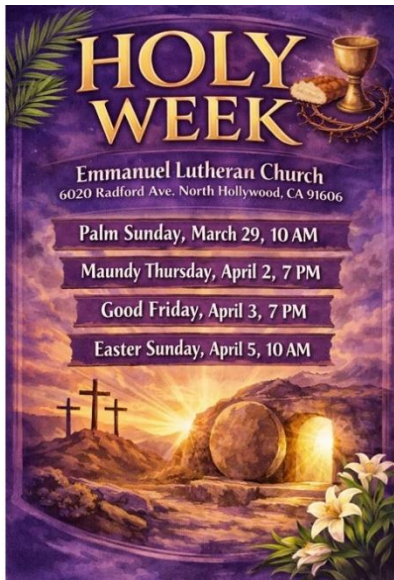
[Thursday
Bulletin](#)

[Sign Up for
Laurel Hall
Buzz](#)

[Emmanuel
Lutheran
Foundation ELF](#)

April 2026

Holy Week and Easter



Maundy Thursday,
April 2, 7pm

Good Friday,
April 3, 7pm

Easter Sunday,
April 5, 10am

Sing with the choir for Easter

Sunday! The Emmanuel choir is looking for singers to join us for Easter Sunday. Sing the glorious Easter music with great singers and a brass quartet! We will teach you the music. Only two rehearsals needed: Thursday, April 2, 9pm-9pm and Sunday, April 5 (Easter Sunday) 9:15am for the 10 am worship, in the Sanctuary. Contact Mark Longfield

at mlongfield@laurelhall.com and we will have your music ready for you. Laurel Hall volunteer hours possible. **He is risen!**



April 3, 2026

Good Friday

THE 7 LAST SAYINGS OF JESUS

— 12 NOON —

 facebook.com/ascensionlaelca
 [@alc1942](https://youtube.com/@alc1942)

ASCENSION LUTHERAN CHURCH



REV. DR. JOLETA SIMMONS

PASTOR TRACY WILLIAMS

DEACON TEMPIE BEAMAN

DR. SHARON ELLIOTT

BISHOP BRENDA BOS

LADY JOSEPHINE MAGGETTE

PASTOR KIMBERLY SCOTT

ASCENSION LUTHERAN CHURCH
5820 West blvd.
Los Angeles, CA 90043

Good Friday, April 3rd, Noon
Ascension Lutheran Church presents
“The 7 Last Sayings of Jesus”

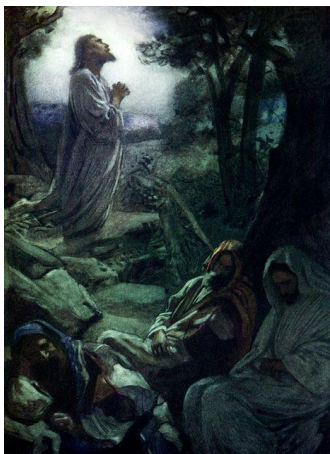
This year we celebrate the excellence of women in ministry!
This year’s special speakers will be an all women cast!!

We hope that you will join us!

Ascension Lutheran Church
5820 West Blvd, Los Angeles, CA 90043



Join the Adult Bible Study to continue learning about the 12 Disciples of Jesus



Join us Sundays at **9:00 a.m. sharp** and conclude at 9:45 to get ready for worship.

Our upcoming topics include:

Sunday, April 12 – The Women who followed Jesus – Mary, the mother of Jesus

Sunday, April 19 – The Women who followed Jesus – Martha & Mary

Sunday, April 26 – The Women who followed Jesus – Mary Magdalene

Sunday, May 3 – The Women who followed Jesus – The Samaritan Woman (we heard about her in Pastor Rick's sermon on 3/8/26)!!

Sunday, May 10 – The Women who followed Jesus – Lydia

Our lively group always has room for more, as we learn about those closest to Jesus. See you on Sunday morning.

Message

Pastor Rick Hall

Minister of Music

Mark Longfield

Organist

Andy Gladbach

Greeter

Sue Clauss

Gaffer

Marshall Bowen

Lector

Kimberly Laux

Communion

George Watson

Bonnie Koch

Diana Howison

Sylvia Ottemoeller

Darlene Michener

Sound

Ted Akin

Live Stream

Bob Akin

Birthdays

April

2) Terri Lau

Lutherans Invited to Godmothers of the Disappeared Prayer Vigil

**WEEKLY
PRAYER VIGIL**
For Those Who have been
Disappeared by I.C.E.
TUESDAY, APRIL 28TH
—
12NOON
AND EVERY TUESDAY
12PM-1PM

Los Angeles Federal Building
300 N Los Angeles St.
Los Angeles, CA 90012

WE ARE GODMOTHERS OF THE
DISAPPEARED — WOMEN OF
FAITH GIVING VOICE TO THOSE
TAKEN FROM US.

OFFICERS, YOUR MOTHERS ARE
PLEADING WITH YOU: RELEASE
OUR CHILDREN AND LAY DOWN
YOUR WEAPONS NOW!

Join Bishop Bos and Lutheran leaders for a special *All Lutheran Prayer Vigil* with CLUE and community partners, standing in faith and solidarity for those who have been disappeared by ICE.

Tuesday, April 28, 2026, 12-1 p,m at the Los Angeles Federal Building, 300 N. Los Angeles St., Parking is available across the street from the building and we will gather on the sidewalk in front. The entire vigil lasts about an hour and concludes with prayer. This is a powerful Christian witness for all people.

A Message From Your Nominating Committee

We are looking for congregation members who would like to share their gifts and talents by serving on Council, the Nominating Committee (if you have been a member at least 2 years), or as Trustee on the Emmanuel Lutheran Foundation. If you are interested in serving for one of these positions or finding out more about the positions contact Sue Clauss; Nominating Committee Chair at sueelc@aol.com; talk to one of the other Nominating Committee Members. Read the full description of duties [HERE](#).



Open positions for 2026/2027 are President, Treasurer, two Members-At-Large on Council, two positions on Nominating Committee, and two positions on ELF. This is a great way to serve our community and our Lord as well as have fun working with other members of Emmanuel!

Nominating Committee Members: Chair: Sue Clauss, Bonnie Ericson, Kristen Longfield, Kathleen Marsden, and Sylvia Ottemoeller.

Directory



Dear Congregation Members, our Directory Task Force (Marshall Bowen, Terri Lau, Elsa Lewis, Adrienne Madolora and George Watson) have been hard at work reaching out via emails. We are asking for a confirmation of the way you would like your listing in the new Emmanuel pictorial directory. When you receive the email, please respond with any updated information. If you have not heard from us yet, you should be getting that email in the next week or so.

If you would prefer talking on the phone, please call **Elsa Lewis at (818) 590-5169**.

We would like a photo from everyone in the directory. A picture taken with your smartphone will work. Let us know if you would prefer us to arrange to have your photo taken on a Sunday morning. **Thanks for your help..**

Directory task force: Marshall Bowen, Chair, Terri Lau, Elsa Lewis, Adrienne Madolora and George Watson.



ELCA

Download the [Prayer Ventures here](#) for April 2026. These petitions are offered as guides to prayer each day of the month for global, social and outreach ministries of the ELCA, as well as for the needs and circumstances of our neighbors, communities and world.



We Pray For...

Prayer List ...

Nesbitt Blaisdell,
 Bob Boehman
 Mike Cosenza
 Ruthanne Henderson
 The Hodge Family
 Dick Krussow
 Kimberly Laux
 Samuel Lee
 Lillie Lim
 Leo Lujan
 Jim & Karen Ohrt
 Lumina Padron-Sanchez
 Pam Sullivan
 Denise Vanzago
 Vehling Family
 Muriel Waugh

We pray for those newly added to the Prayer List....

Emerson Jones
 Edie Lewis
 Mary Ann Manore
 Patrick Moya
 Aaron Rockwell
 CaroleJean Willis

.Shut-ins:

Karen Bollesen;
 Gloria Blackman;
 Jim & Marie Crawford
 Bill Hoffman;
 Ernine Larson;
 Bernadine Poulsen;
 Mavien Ready;
 Thorsen Family

...Mission Concerns:

ELC sponsored missionaries around the world;
 California Lutheran University;
 ELCA World Relief

... in Military

Service: Bryce Anderson;
 Joshua Camarena
 Aaron Carpenter;
 Marc Gonsalves;
 Curtis Haines;
 Daniel Lukavsky;
 David Lukavsky;
 Tyler Stefansen
 Austin Swanson;
 Jeremy Stephens;
 Keaton Wriedt

Prayer of the Day: Holy God, source of all love, on the night of his betrayal, Jesus gave us a new commandment, to love one another as he loves us. Write this commandment in our hearts, and give us the will to serve others as he was the servant of all, your Son, Jesus Christ, our Savior and Lord, who lives and reigns with you and the Holy Spirit, one God, now and forever.



ELATE presents **Lettice and Lovage**, the story of a later in life friendship between the most unlikely humans. Lettice, an eccentric child of the theatre, and Lotte, the epitomes career women find common ground in Peter Shaffer's wonderful tale of worlds colliding. It's a joyous, laugh a minute way to remind ourselves that differences can be overcome, and anyone can become friends. Even if an axe

happens to be involved. **Lettice and Lovage** runs April 17, 18, 19, 24, 25, 26 and May 1, 2, 3, Friday and Saturdays at 8pm, Sundays at 2pm in the Lincoln Stegman Theatre.

Tickets available for purchase at the door, online [here](#), or by calling 818-509-0882"

A Season of Renewal & Resolve



March brings longer days, warmer afternoons, and the first real signs of spring. There's a sense of forward motion this time of year, a reminder that growth and renewal are possible. At the pantry, that same spirit fuels our work. Across Los Angeles County, many families are still feeling the strain of high housing costs, rising grocery prices, and wages that have not kept pace with the cost of living. Nearly one in four households continues to experience food insecurity. For parents, seniors, and working neighbors who are doing everything they can, that gap is real.

Spring invites us to step into action with fresh energy. It is a season to roll up our sleeves, strengthen our partnerships, and show up for our community with empathy and purpose. With your support, we continue to meet the need head on, making sure that as the weather warms, hope and stability grow right alongside it.

There is work to do, and we are ready for it together.

We need helping hands to pack more bags! We are asking people for an hour or two of their time to pack bags at Temple Beth Hillel. Check out some of the ways you can volunteer below. Then visit our website, NHIFP.org, go to the tab "Sign Up Genius" to help out!

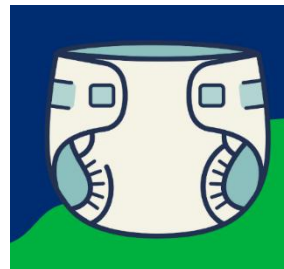
Transportation Team transports the loaded grocery bags from the packing site at Temple Beth Hillel to the food distribution site at First Christian Church. Sign up to help out here: [North Hollywood Interfaith Food Pantry: Transport bags from Temple to new pantry and/or unload truck \(signupgenius.com\)](https://www.signupgenius.com)

Packing Team fills the bags and sorts them in the basement of Temple Beth Hillel. Sign up to help out here: [North Hollywood Interfaith Food Pantry: Pack Bags at the Temple OR at Distribution - CHECK LOCATION ADDRESS! \(signupgenius.com\)](https://www.signupgenius.com)



**This month, we are especially
in need of DRY CAT
FOOD and WET DOG FOOD.**

**Diapers Needed!
Please donate
Sizes 5-7**



DROP OFF LOCATIONS:

NHIFP DISTRIBUTION

11634 Moorpark Street, Studio City
(1/2 block east of Colfax)
Mondays and Fridays between 7:30 AM - 11:00 AM

TEMPLE BETH HILLEL

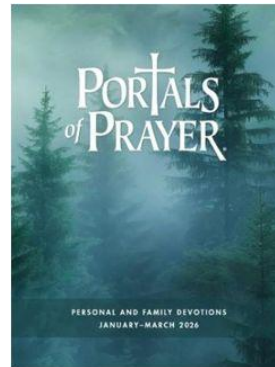
12326 Riverside Drive, Valley Village
(enter off Laurelgrove)
Mondays and Fridays between 4:00 PM - 5:00 PM

GOT EXTRA GROCERY BAGS?

If you've got gently used paper or plastic bags taking up space in your pantry, we'd love to give them a second life! Drop them at our distribution site Mondays and Fridays between 7:30 AM and 11:00AM —we'll put them to good use!
Plastic bags are especially appreciated.

Next Quarter Devotionals Available

Devotional booklets are available in the literature rack in the church narthex, **Portals of Prayer** and **Christ in our Home** each covering one quarter of 2026. **Spark** is available in limited number. In this magazine style devotional book **Spark**, there are activities and stories to lead everyone in the family through the season. Finally, **The Word in Season** is also available. Pick up any of these in the narthex today! These are offered for you at no charge. They are our gift to help you.



[Give Now](#)



[LSS](#)

The link takes you directly to our giving page. If you have questions about any giving options, you may benefit from watching this tutorial on safely donating online: [Online Giving](#)

Please feel free to call the business office:
(818) 763-5434.

[SoCalSynod](#)

Visit the synod website to check out upcoming events. Sign up to receive newsletters from the synod office.



See how [Lutheran Social Services](#) works and how you can make a donation. Your donations are essential. See a complete list of urgent local needs in this time of covid [here](#).

YOUR COUNCIL

President: Tom Reilly
Vice President: Sue Clauss
Secretary: Liz Rickertsen
Treasurer: Robert Akin
Financial Secretary: Diana Howison



Members at Large:
Marshall Bowen;
Aaron Kraft;
Michael Madolora
Angela Wiegand

For the Kids

+ **Download Children's pages** with stories, puzzles and quizzes based on the lessons for the week.
[Gospel page for 7+](#)
[Gospel pages 3-7](#)

[Gather Bible Study](#)

for
Women of the ELCA at
Emmanuel Lutheran

[Church Website](#)

There are several links in these online newsletters. Please let me know if any of them don't work for you. THANK YOU for your positive comments. I always welcome your input.

Sincerely,
[Marty McCambridge](#)
Emmanuel Lutheran Church
6020 Radford Avenue, North Hollywood, CA 91606
818-761-6124