

You are the salt of the earth.
But if the salt loses its saltiness,
how can it be made salty again?
It is no longer good for anything,
except to be thrown out
and trampled underfoot.

Matthew 5:13

DailyVerses.net

'E'-Mail Emmanuel Lutheran Church

Epiphany V

February 8, 2026

Serving the Community since September 1945

*"Welcoming all people, Emmanuel Lutheran Church and schools
love, teach, and serve through Christ."*

[Emmanuel
Website](#)

[Laurel Hall
Website](#)

[Sign Up for
Newsletter](#)

[Sunday
Bulletin](#)

[Sign Up for
Laurel Hall
Buzz](#)

[Emmanuel
Lutheran
Foundation ELF](#)

February 2026



Ash Wednesday February 18

There are two opportunities to share in the imposition of ashes: one in the morning and one in the evening.

You can take part in this rite in the chapel at 8:50 A.M.

Or, Join us for Ash Wednesday Worship in the Sanctuary, 7:00 PM

Midweek Lenten Soup Suppers

Join us in the reception room Wednesdays during Lent: February 25, March 4, 11, 18 and 25 at 6:30 PM for midweek Lenten Soup Suppers (soup, bread, coffee, etc.) with Lenten worship following at 7:00 PM.



SoCal Synod News



Join the 2026 Region 2 of the ELCA Lenten Challenge!

The Lenten Challenge Theme — “Lord, When Did We See You?”

The theme of this year’s challenge derives from Matthew 25:37-40. The passage emphasizes that caring for the poor, sick, and marginalized is an act of service to Christ, and that a person’s treatment of others is a reflection of their relationship with God. The spiritual practices for the six weeks of Lent will focus on stretching our learning, care and advocacy muscles on behalf of underserved communities. The six weeks will be broken up according to the gospel text, as below, with participants focusing on what we know and think about these siblings in Christ, as well as how we act in support and on behalf of these communities:

Why Lent? Lent is a season of 40 days to reflect, remember our dependence on God and one another, and look forward to the ways God calls us to be. Adding one or more of these spiritual practices to your observation of Lent might help you feel more connected. A light-hearted challenge like this could help our synods be the Church together, and to see God’s vision and invitation for us to be a church for the world as we share the good news of Jesus Christ.

Use the QR Code or go to: <https://lentenchallenge.org/> to learn more and sign up!



CABARET RETURNS



Emmanuel Friends of Music Sunday, February 22, 4pm • Cabaret is back!

The Parish Hall will be transformed into a family-friendly nightclub to present some of your favorite performers from Emmanuel, Laurel Hall and ELATE with live band, small tables, and yummy sweets and non-alcoholic beverages. A wide variety of acts will be presented, including excerpts from this year's Laurel Hall school musical ***Frozen!*** There will be new faces this year so don't miss out. It will be a great chance to come together for fellowship, camaraderie and some wonderful entertainment. Another fun show presented by Emmanuel Friends of Music.



Join the Adult Bible Study to continue learning about the 12 Disciples of Jesus

Join our Adult Sunday morning Bible Study/Sunday School, as we gather every Sunday **at 9:00 a.m. sharp** and conclude at 9:45 to get ready for worship. We meet in the Conference Room on the first floor of the Administration building. Our upcoming topics include:

Sunday, February 8 – Matthew the tax collector and why Jesus called him, the most despised occupation and thus persons among Jews, to be a Disciple

Sunday, February 15 – Thomas, was he really a doubter or just given a bum rap?

Sunday, February 22 – James the Less, but wait there is more to him than that!

Sunday, March 1 – Simon the Zealot, really one of Jesus' disciples?

Sunday, March 8 – Judas (not Iscariot) the Apostle with Three Names

Sunday, March 15 – Judas Iscariot

Our lively group always has room for more, as we learn about those closest to Jesus. Some pass by our room during class and ask "how can you be laughing?" I reply with "because it is fun to learn more about Jesus and who he chose as disciples!" See you on Sunday morning.

Liz

Message

Pastor Rick Hall

Minister of Music

Mark Longfield

Organist

Andy Gladbach

Greeter

Jeanine Wilson

Communion

Assistant

Liz Rickertsen

Tom Reilly

Sue Clauss

Sylvia Ottemoeller

Gail Bohannon

Lector

Mark Garland

Usher

Jeanine Wilson

Barbara Piecka

Gaffer

Marshall Bowen

Sound

Aaron Rockwell

Live Stream

Bob Akin

Birthdays

6) Debra Hintz

Catherine Menton

8) Gloria Blackman

Ben Lowe

Jeniffer Rodriguez

9) Annette Jones

11) Heidi Moore

12) Victoria Stark



Download the [Prayer Ventures here](#) for January 2026. These petitions are offered as guides to prayer each day of the month for global, social and outreach ministries of the ELCA, as well as for the needs and circumstances of our neighbors, communities and world.

We Pray For...



Prayer List ...

Nesbitt Blaisdell,
Bob Boehman
Mike Cosenza
Ruthanne Henderson
The Hodge Family
Rick Holt
Dick Krussow
Kimberly Laux
Samuel Lee
Lillie Lim
Leo Lujan
Jim & Karen Ohrt
Lumina Padron-Sanchez
Donna Stenberg
& family
Pam Sullivan
Denise Vanzago
Muriel Waugh

We pray for those newly added to the Prayer List....

Kimberly Laux
Edie Lewis
Mary Ann Manore
Vehling Family

.Shut-ins:

Karen Bollesen;
Gloria Blackman;
Jim & Marie Crawford
Bill Hoffman;
Ernine Larson;
Bernadine Poulsen;
Mavien Ready;
Thorsen Family

...Mission Concerns:

ELC sponsored
missionaries around
the world;
California Lutheran University;
ELCA World Relief

... in Military

Service: Bryce Anderson;
Joshua Camarena
Aaron Carpenter;
Marc Gonsalves;
Curtis Haines;
Daniel Lukavsky;
David Lukavsky;
Tyler Stefansen
Austin Swanson;
Jeremy Stephens;
Keaton Wriedt

Prayer of the Day: Lord God, with endless mercy you receive the prayers of all who call upon you. By your Spirit show us the things we ought to do, and give us the grace and power to do them, through Jesus Christ, our Savior and Lord. Amen.

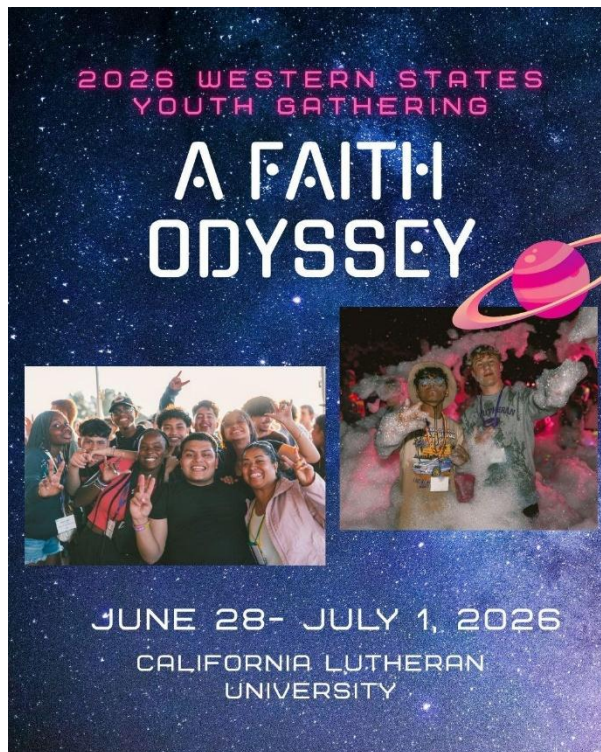
YOUTH NEWS



Confirmation Classes continue as we partner with other churches in the Twin Valley Conference to teach Confirmation classes. Classes will be held Sunday afternoons from 1:30- 3:30pm at differing locations and churches throughout the Conference. Classes will only be once a month and will run until May.

If you are in the 6-8th grade and want to attend or if you are the parent of a middle schooler who wants their kiddo to attend, please contact Pastor Rick at rhall@elcnoho.org or call the church 818-

761-6124 or catch him on Sunday. It should be an exciting year of learning as we will focus on: What does it mean to be Lutheran?



[Click Here for Details.](#)

Donation Asks of the Season



We need helping hands to pack more bags! We are asking people for an hour or two of their time to pack bags at Temple Beth Hillel. Check out some of the ways you can volunteer below. Then visit our website, NHIFP.org, go to the tab "Sign Up Genius" to help out!

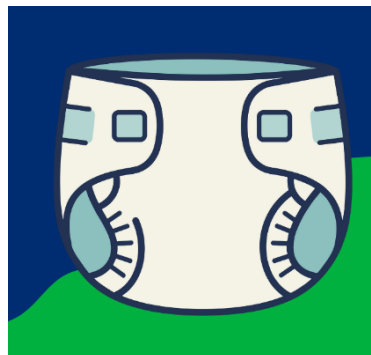
Transportation Team transports the loaded grocery bags from the packing site at Temple Beth Hillel to the food distribution site at First Christian Church. Sign up to help out here: [North Hollywood Interfaith Food Pantry: Transport bags from Temple to new pantry and/or unload truck \(signupgenius.com\)](http://signupgenius.com)

Packing Team fills the bags and sorts them in the basement of Temple Beth Hillel. Sign up to help out here: [North Hollywood Interfaith Food Pantry: Pack Bags at the Temple OR at Distribution - CHECK LOCATION ADDRESS! \(signupgenius.com\)](http://signupgenius.com)



This month, we are especially
in need of **DRY CAT
FOOD** and **WET DOG FOOD**.

Diapers Needed!
Please donate
Sizes 5-7



DROP OFF LOCATIONS:

NHIFP DISTRIBUTION

11634 Moorpark Street, Studio City
(1/2 block east of Colfax)
Mondays and Fridays between 7:30 AM - 11:00 AM

TEMPLE BETH HILLEL

12326 Riverside Drive, Valley Village
(enter off Laurelgrove)
Mondays and Fridays between 4:00 PM - 5:00 PM

GOT EXTRA GROCERY BAGS?

If you've got gently used paper or plastic bags taking up space in your pantry, we'd love to give them a second life! Drop them at our distribution site Mondays and Fridays between 7:30 AM and 11:00AM —we'll put them to good use!
Plastic bags are especially appreciated.



Bethel Encino Lutheran Church
in partnership with Salem Lutheran Church
invites you to serve with




MARCH 19-22, 2026

HELP US RAISE \$40,000.00

- THIS IS THE COST OF INGREDIENTS
- DONATIONS ARE TAX DEDUCTIBLE
- ANY AMOUNT IS APPRECIATED

Scan to Volunteer or Donate
give.bethel.org/salem



THE IMPACT
Ages 5-105
Together, we will pack 132,192 meals for children experiencing hunger around the world. Just \$0.30 feeds a child for a day.

YOU CAN SERVE
Ages 5-105
Individuals • Families • Groups
Students earn service hours

WHO

SALEM LUTHERAN CHURCH
Join Bethel Encino & Salem Lutheran at
1211 N. Brand Blvd
Glendale, CA 91202

WHERE

VOLUNTEER
Wednesday - Sunday
Set up • Meal Packing • Clean up
Full schedule available online

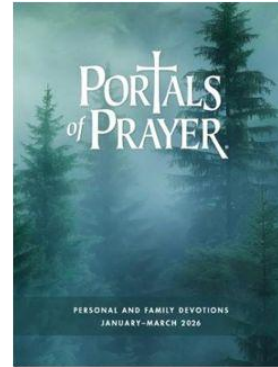
SHOW UP



Feed My Starving Children® is a Christian nonprofit recognized for strong stewardship and global impact.

Next Quarter Devotionals Available

Devotional booklets are available in the literature rack in the church narthex, **Portals of Prayer** and **Christ in our Home** each covering one quarter of 2026. **Spark** is available in limited number. In this magazine style devotional book **Spark**, there are activities and stories to lead everyone in the family through the season. Finally, **The Word in Season** is also available. Pick up any of these in the narthex today! These are offered for you at no charge. They are our gift to help you.



[Give Now](#)



Southwest
California Synod
EVANGELICAL LUTHERAN
CHURCH IN AMERICA

[LSS](#)

The link takes you directly to our giving page. If you have questions about any giving options, you may benefit from watching this tutorial on safely donating online: [Online Giving](#)

Please feel free to call the business office:
(818) 763-5434.

[SoCalSyno
d](#)

Visit the synod website to check out upcoming events. Sign up to receive newsletters from the synod office.



See how [Lutheran Social Services](#) works and how you can make a donation. Your donations are essential. See a complete list of urgent local needs in this time of covid [here](#).

YOUR COUNCIL

President: Tom Reilly

Vice President: Sue Clauss

Secretary: Liz Rickertsen

Treasurer: Robert Akin

Financial

Secretary: Diana Howison

Members at Large:

Marshall Bowen;

Aaron Kraft;

Michael Madolora

Angela Wiegand



For the Kids

+ Download Children's pages with stories, puzzles and quizzes based on the lessons for the week.

[Gospel page for 7+](#)
[Gospel pages 3-7](#)

[Gather Bible
Study](#)

for

Women of the ELCA at
Emmanuel Lutheran

[Church
Website](#)

There are several links in these online newsletters. Please let me know if any of them don't work for you. THANK YOU for your positive comments. I always welcome your input.

Sincerely,

[Marty McCambridge](#)

Emmanuel Lutheran Church

6020 Radford Avenue, North Hollywood, CA 91606

818-761-6124