

**'E'-Mail**  
**Emmanuel Lutheran Church**  
**Transfiguration**

February 15, 2026

***Serving the Community since September 1945***

*"Welcoming all people, Emmanuel Lutheran Church and schools  
love, teach, and serve through Christ."*

**February 2026**

***As we enter the sacred season of Lent, we pause to  
remember our humility before God. May this Ash  
Wednesday be a time of reflection, repentance and  
renewal as we turn our hearts back to God.***



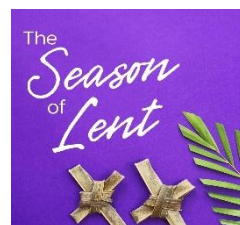
**Note: Church Offices will be closed February 13-16**

### **Ash Wednesday February 18**

There are two opportunities to share in the imposition of ashes: one in the morning and one in the evening. You can take part in this rite in the chapel at 8:50 A.M. Or, Join us for Ash Wednesday Worship in the Sanctuary, 7:00 PM

### **Midweek Lenten Soup Suppers**

Join us in the reception room Wednesdays during Lent: February 25, March 4, 11, 18 and 25 at 6:30 PM for midweek Lenten Soup Suppers (soup, bread, coffee, etc.) with Lenten worship following at 7:00 PM.



## **SoCal Synod News**



**Join the 2026 Region 2 of the ELCA Lenten Challenge!**  
The Lenten Challenge Theme — “Lord, When Did We See You?”

The theme of this year's challenge derives from Matthew 25:37-40. The passage emphasizes that caring for the poor, sick, and marginalized is an act of service to Christ, and that a person's treatment of others is a reflection of their relationship with God. The spiritual practices for the six weeks of Lent will focus on stretching our learning, care and advocacy muscles on behalf of underserved communities. The six weeks will be broken up according to the gospel text, as below, with participants focusing on what we know and think about these siblings in Christ, as well as how we act in support and on behalf of these communities:

Why Lent? Lent is a season of 40 days to reflect, remember our dependence on God and one another, and look forward to the ways God calls us to be. Adding one or more of these spiritual practices to your observation of Lent might help you feel more connected. A light-hearted challenge like this could help our synods be the Church together, and to see God's vision and invitation for us to be a church for the world as we share the good news of Jesus Christ.

Use the QR Code or go to: <https://lentenchallenge.org/> to learn more and sign up!

## CABARET RETURNS

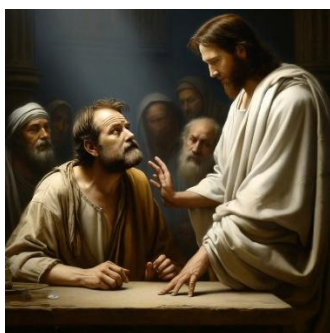


### Emmanuel Friends of Music Sunday, February 22, 4pm • Cabaret is back!

The Parish Hall will be transformed into a family-friendly nightclub to present some of your favorite performers from Emmanuel, Laurel Hall and ELATE with live band, small tables, and yummy sweets and non-alcoholic beverages. A wide variety of acts will be presented, including

excerpts from this year's Laurel Hall school musical **Frozen!** There will be new faces this year so don't miss out. It will be a great chance to come together for fellowship, camaraderie and some wonderful entertainment. Another fun show presented by Emmanuel Friends of Music.

## Join the Adult Bible Study to continue learning about the 12 Disciples of Jesus



Join us as we gather Sunday at **9:00 a.m.** sharp and conclude at 9:45 to get ready for worship. We meet in the Conference Room on the first floor of the Administration building. Our upcoming topics include:

### Sunday, February 15

– Thomas, was he really a doubter or just given a bum rap?

**Sunday, February 22** – James the Less, but wait there is more to him than that!

**Sunday, March 1** – Simon the Zealot, really one of Jesus' disciples?

**Sunday, March 8** – Judas (not Iscariot) the Apostle with Three Names

**Sunday, March 15** – Judas Iscariot

Our lively group always has room for more, as we learn about those closest to Jesus. Some pass by our room during class and ask "how can you be laughing?" I reply with "because it is fun to learn more about Jesus and who he chose as disciples!" See you on Sunday morning.

Liz

### Message

Pastor Rick Hall

### Minister of Music

Mark Longfield

### Organist

Andy Gladbach

### Greeter

Kathleen Marsden

### Communion

### Assistants

Mark Longfield

George Watson

Bonnie Koch

CaroleJean Willis

Darlene Marsden

### Lector

Kimberly Laux

### Usher

Kurt Marsden

Debie Marsden

### Gaffer

Bonnie Ericson

### Sound

Stephen Howison

### Live Stream

Jessie Tobey

## Birthdays

16) Elsa Lewis

Audrey Swanson

17) Stephen Howison

Richard Krussow

18) Sara Arndt

Morgan Loy

**The Handcrafts Group** will meet this Sunday, February 15, in the Administrative Wing Conference Room at 1:00 pm. Please join us.

Contact Diana Howison if you have any questions.



Download the [Prayer Ventures here](#) for January 2026. These petitions are offered as guides to prayer each day of the month for global, social and outreach ministries of the ELCA, as well as for the needs and circumstances of our neighbors, communities and world.



***Prayer List ...***

Nesbitt Blaisdell,  
Bob Boehman  
Mike Cosenza  
Ruthanne Henderson  
The Hodge Family  
Rick Holt  
Dick Krussow  
Kimberly Laux  
Samuel Lee  
Lillie Lim  
Leo Lujan  
Jim & Karen Ohrt  
Lumina Padron-Sanchez  
Donna Stenberg  
& family  
Pam Sullivan  
Denise Vanzago  
Muriel Waugh

***We pray for those newly  
added to the Prayer List....***

Kimberly Laux  
Edie Lewis  
Mary Ann Manore  
Vehling Family

***.Shut-ins:***

Karen Bollesen;  
Gloria Blackman;  
Jim & Marie Crawford  
Bill Hoffman;  
Ernine Larson;  
Bernadine Poulsen;  
Mavien Ready;  
Thorsen Family

***...Mission Concerns:***

ELC sponsored  
missionaries around  
the world;  
California Lutheran University;  
ELCA World Relief

***... in Military***

***Service:***

Bryce Anderson;  
Joshua Camarena  
Aaron Carpenter;  
Marc Gonsalves;  
Curtis Haines;  
Daniel Lukavsky;  
David Lukavsky;  
Tyler Stefansen  
Austin Swanson;  
Jeremy Stephens;  
Keaton Wriedt

***We Express Sympathy*** and the Promise of the Resurrection  
to friends and family of Pilar Walsh in her death.

***Prayer of the Day:*** O God, in the transfiguration of your Son you confirmed the mysteries of the faith by the witness of Moses and Elijah, and in the voice from the bright cloud declaring Jesus your beloved Son, you foreshadowed our adoption as your children. Make us heirs with Christ of your glory, and bring us to enjoy its fullness, through Jesus Christ, our Savior and Lord, who lives and reigns with you and the Holy Spirit, one God, now and forever.



# Foundation Scholarship Opportunities

The Emmanuel Lutheran Foundation is pleased to announce that it has a limited number of need-based scholarships to award to deserving Laurel Hall Students. Applications are being received for the 2026-2027 Laurel Hall academic year. The Tina Overton Brende, Eames Family, and Foundation Board Scholarship Funds were established to provide tuition assistance for Laurel Hall students. These scholarships are not open to Emmanuel/Laurel Hall staff families and scholarships may not be combined with Laurel Hall financial aid.

Scholarship applicants must:

- Be a student at Laurel Hall
- Be in Kindergarten or above in the 2025-2026 school year
- Be of the Christian faith
- Complete and return a Scholarship Application Form, a copy of most recent report card and pages 1 and 2 of your 2024 Form 1040 income tax return

Download the application form below. Please note a written response (page 3) is to be completed by the student. Student's responses may be handwritten or typed. Applications must be returned to the church office by **Friday, March 13, 2026**, in person, by mail, by sending a PDF E-mail file of the application to [Scholarships@elcnoho.org](mailto:Scholarships@elcnoho.org), or placed in the Emmanuel Lutheran Foundation mail slot across the lobby from the Church office. Please be sure to address the envelope to the **Emmanuel Lutheran Foundation**.

Scholarship awards will be announced in April 2026, and scholarship recipients and their families will be recognized by Emmanuel Lutheran Church. The Emmanuel Lutheran Foundation manages perpetual and special endowment funds donated by members and friends of Emmanuel Lutheran Church and its ministries. Gifts to the Foundation provide scholarships, facility improvements, playground equipment, youth ministry, and financial support for special projects at Emmanuel Lutheran Church, Laurel Hall School, and the Laurel Hall Pre-School. If you would like to make a gift or request information about the Foundation, please contact Bonnie Ericson at [bericson@csun.edu](mailto:bericson@csun.edu).

In His Service,  
Bonnie Ericson,  
Chair Emmanuel Lutheran Foundation

Debie Marsden,  
Scholarship Chair Emmanuel Lutheran Foundation

Cc: Marti McCloud  
Pastor Richard Hall

**[Download Application Forms Here](#)**

## YOUTH NEWS



Confirmation Classes continue as we partner with other churches in the Twin Valley Conference to teach Confirmation classes. Classes will be held Sunday afternoons from 1:30- 3:30pm at differing locations and churches throughout the Conference. Classes will only be once a month and will run until May.

If you are in the 6-8th grade and want to attend or if you are the parent of a middle schooler who wants their kiddo to attend, please contact Pastor Rick at [rhall@elcnoho.org](mailto:rhall@elcnoho.org) or call the church 818-761-6124 or catch him on Sunday. It should be an exciting year of learning as we will focus on: What does it mean to be Lutheran?

A poster for the 2026 Western States Youth Gathering. The background is a deep blue space with white stars. At the top, the text "2026 WESTERN STATES YOUTH GATHERING" is written in pink, all-caps, sans-serif font. Below this, the title "A FAITH ODYSSEY" is written in large, white, all-caps, sans-serif font. To the right of the title is a pink planet with a ring. Below the title are two photographs: on the left, a group of diverse young people smiling and making peace signs; on the right, two young men in space suits standing in a cloud of white smoke. At the bottom, the dates "JUNE 28- JULY 1, 2026" and the location "CALIFORNIA LUTHERAN UNIVERSITY" are written in white, all-caps, sans-serif font.

2026 WESTERN STATES  
YOUTH GATHERING

A FAITH  
ODYSSEY

JUNE 28- JULY 1, 2026  
CALIFORNIA LUTHERAN  
UNIVERSITY

[Click Here for Details.](#)

# Donation Asks of the Season



We need helping hands to pack more bags! We are asking people for an hour or two of their time to pack bags at Temple Beth Hillel. Check out some of the ways you can volunteer below. Then visit our website, [NHIFP.org](http://NHIFP.org), go to the tab "Sign Up Genius" to help out!

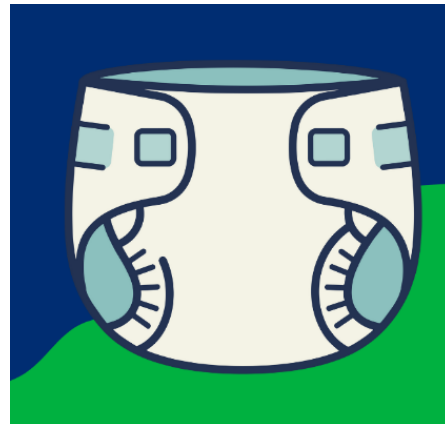
**Transportation Team** transports the loaded grocery bags from the packing site at Temple Beth Hillel to the food distribution site at First Christian Church. Sign up to help out here: [North Hollywood Interfaith Food Pantry: Transport bags from Temple to new pantry and/or unload truck \(signupgenius.com\)](http://NorthHollywoodInterfaithFoodPantry.org)

**Packing Team** fills the bags and sorts them in the basement of Temple Beth Hillel. Sign up to help out here: [North Hollywood Interfaith Food Pantry: Pack Bags at the Temple OR at Distribution - CHECK LOCATION ADDRESS! \(signupgenius.com\)](http://NorthHollywoodInterfaithFoodPantry.org)



This month, we are especially  
in need of **DRY CAT  
FOOD** and **WET DOG FOOD**.

**Diapers Needed!**  
Please donate  
Sizes 5-7



## DROP OFF LOCATIONS:

### NHIFP DISTRIBUTION

11634 Moorpark Street, Studio City  
(1/2 block east of Colfax)

Mondays and Fridays between 7:30 AM - 11:00 AM

### TEMPLE BETH HILLEL

12326 Riverside Drive, Valley Village  
(enter off Laurelgrove)

Mondays and Fridays between 4:00 PM - 5:00 PM

## GOT EXTRA GROCERY BAGS?

If you've got gently used paper or plastic bags taking up space in your pantry, we'd love to give them a second life! Drop them at our distribution site Mondays and Fridays between 7:30 AM and 11:00AM —we'll put them to good use!  
Plastic bags are especially appreciated.





Bethel Encino Lutheran Church  
in partnership with Salem Lutheran Church  
invites you to serve with





**HELP US RAISE \$40,000.00**

- THIS IS THE COST OF INGREDIENTS
- DONATIONS ARE TAX DEDUCTIBLE
- ANY AMOUNT IS APPRECIATED

**THE IMPACT**

**WHY** Together, we will pack 132,192 meals for children experiencing hunger around the world. Just \$0.30 feeds a child for a day.

**MARCH 19-22, 2026**

**YOU CAN SERVE**

Ages 5-105  
Individuals • Families • Groups  
Students earn service hours

**WHO**




**WHERE**

**SALEM LUTHERAN CHURCH**  
Join Bethel Encino & Salem Lutheran at  
1211 N. Brand Blvd  
Glendale, CA 91202

**SHOW UP**




**VOLUNTEER**  
Wednesday-Sunday  
Set-up • Meal Packing • Clean-up  
Full schedule available online



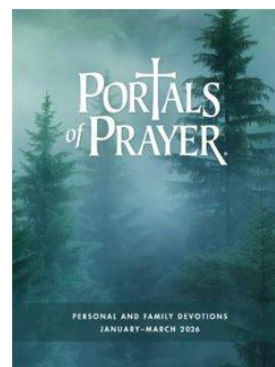

Feed My Starving Children® is a Christian nonprofit recognized for strong stewardship and global impact.

Scan to Volunteer or Donate  
[give.fmhc.org/salem](https://give.fmhc.org/salem)



## Next Quarter Devotionals Available

Devotional booklets are available in the literature rack in the church narthex, **Portals of Prayer** and **Christ in our Home** each covering one quarter of 2026. **Spark** is available in limited number. In this magazine style devotional book **Spark**, there are activities and stories to lead everyone in the family through the season. Finally, **The Word in Season** is also available. Pick up any of these in the narthex today! These are offered for you at no charge. They are our gift to help you.



[Give Now](#)

The link takes you directly to our giving page. If you have questions about any giving options, you may benefit from watching this tutorial on safely donating online: [Online Giving](#)

Please feel free to call the business office:  
(818) 763-5434.



Southwest  
California Synod  
EVANGELICAL LUTHERAN  
CHURCH IN AMERICA

[SoCalSynod](#)

Visit the synod website to check out upcoming events.  
Sign up to receive newsletters from the synod office.

[LSS](#)



See how [Lutheran Social Services](#) works and how you can make a donation. Your donations are essential. See a complete list of urgent local needs in this time of covid [here](#).



## **YOUR COUNCIL**

**President:** Tom Reilly  
**Vice President:** Sue Clauss  
**Secretary:** Liz Rickertsen  
**Treasurer:** Robert Akin  
**Financial Secretary:** Diana Howison

### **Members at Large:**

Marshall Bowen;  
Aaron Kraft;  
Michael Madolora  
Angela Wiegand



## **For the Kids**

**+ Download Children's pages** with stories, puzzles and quizzes based on the lessons for the week.

[Gospel page for 7+ Gospel pages 3-7](#)

[Gather Bible Study](#)

**for**

Women of the ELCA at  
Emmanuel Lutheran

[Church Website](#)

There are several links in these online newsletters. Please let me know if any of them don't work for you. THANK YOU for your positive comments. I always welcome your input.

*Sincerely,*

[Marty McCambridge](#)

*Emmanuel Lutheran Church*

*6020 Radford Avenue, North Hollywood, CA 91606*

*818-761-6124*