

F14

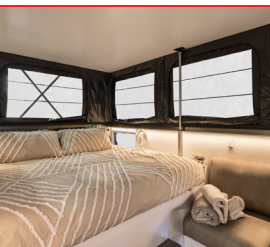
2025

CARAVAN
OF THE YEAR

SPONSORED BY
CARAVAN MSR

Winner
BEST
HYBRID

FROM
\$79,990*



The F14 is a revolutionary new fusion of caravan and camper trailer. Featuring an aerodynamic, low profile design, its the perfect model for those looking for an affordable hybrid that fits under a typical garage or carport. Winning Hybrid Caravan of the Year 2025 - the F14 breaks the blurs the lines between comfort, luxury, and compact caravanning experiences.

Built for adventurers looking for a more compact off-road design, the F14 doesn't sacrifice on luxury. Featuring a luxurious, bright living area with plenty of space, the F14 earns its place in Cub's luxury hybrid caravan range. With a compact, nimble body and Cub's famous off-road capabilities, the F14 also features impressive off-grid facilities allowing you to explore the farthest reaches of Australia. It's perfect for couples travelling Australia in luxury without having to factor in an expensive tow vehicle.



Contact Cub today!

cubcampers.com.au

02 8838 8600

2025 MODEL INCLUDES BUILT-IN ENSUITE WITH TOILET AND SHOWER



4WD



UP TO 2



OFF ROAD



BALL WEIGHT
190KG*



ATM
2700KG*



TARE
1759KG*

AUSTRALIAN STEEL AND TIMBERLESS FRAME

AUSTRALIAN MADE, AUSTRALIAN OWNED

AUSTRALIA-WIDE SUPPORT

5 YEAR SUSPENSION & CHASSIS WARRANTY**

OVER 55 YEARS OF RV MANUFACTURING EXPERIENCE

* specifications may change without notice
** conditions apply

Version: 28/4/2025

F14 SPECS

BODY SPECS

ATM	2700kg
Ball Weight	190kg [‡]
Tare	1759kg [‡]
Internal Height	1.995m
Internal Length	4.20m (14ft)
Internal Width	2.04m
Towing Height	2.06m [‡]
Towing Length	6.60m
Towing Width	2.23m

BRAKES & WHEELS

Holroyd Square Axle	50mm
Brakes	12" Electric
Tyres	Kumho AT52
Wheel Type	17 x 8 Black Steel (6/139.7 PCD)

DRAWBAR

4kg Gas Bottle & Holder	2
AL-KO Ball Hitch	50mm Off Road
Ark XO 750 Jockey Wheel	Standard
Drawbar	150 x 50 x 3.0mm
Galvanised Steel Stoneguard	Standard
Jerry Can Holder	2
Stonestopper Mud Flaps	Standard

INSIDE FITTINGS

Bed Size	2100 x 1600 x 135mm
Mattress Front	Slumberest Cloud 9 Pillow Top
Dinette Seats	2
Seat Cushions	Microfibre Leather in "Dove"

KITCHEN - EXTERNAL

Drawers	2
Ezy Clean Kitchen Top	Standard
Fold Out Shelf	Standard
Fridge Box and Slide	Standard
Fridge Box Size	W=560mm L=930mm H=490mm
Galley Pantry	Standard
Mixer Tap	Standard
Smev Stainless Steel Stove & Sink	3 Burner
Smev Stainless Steel Wind Deflector	Standard

KITCHEN - INTERNAL

Ezy Clean Kitchen Top	Standard
Mixer Tap - 3 Way	Standard
Pantry Cupboard	Standard
Stainless Steel Sink	Standard
Storage Soft Close Drawers	6
Water Filter	Standard

BATHROOM

Toilet - Thetford Cassette	Standard
Interior Ensuite	Standard
Interior Shower	Standard

OUTSIDE FITTINGS

Awning 4.0m	Standard
Entry door: 1250mm (Aussie Traveller)	Standard
Entry grab handle with Light	Standard
Rear Utility Rack (Inc. Spare Wheel Bracket)	Standard
Storage Hatches	7

POWER - COMFORT

Erberspacher Hot Water & Heater	Standard
Electric Pop Top Roof	Standard

POWER - INLETS/OUTLETS

12V Accessory Socket - External & Internal	6
12V Twin USB Socket - External & Internal	6
240V External Inlet	Standard
240V External Outlet	Standard
240V Internal Double Outlet	3

POWER - LIGHTING

LED Awning Light	2
LED Bedside, Cabin and Floor Lighting	Standard
LED Sensor Light - External Storage Areas	4
LED Sensor Light - Under Bed Storage	Standard
LED Shower Light	Standard

POWER MANAGEMENT

150AH Lithium Battery (5 Year Warranty)	1
Redarc BMS30 Charger	Standard
Redvision Display	Standard
Solar Input (Anderson Plug) - Suits Unregulated Solar Panel	Standard
Solar panel - Redarc 180 Watt	2

SUSPENSION & CHASSIS

AL-KO Wind Down Legs	4
Australian Galvanised Steel Chassis	Standard
Rear Recovery Points (2400kg Rating)	Standard
Shock Absorbers	Twin
Cub Suspension	Standard

WATER

12V Pump	11 L/min
100L Heavy Duty Water Tank	1
50L Heavy Duty Grey Water Tank	1
Brass Tap for Water	Standard
Water Gauge	Standard

All model specification details are subject to change

[‡] The tare, ball weights, internal height & towing height are a guide only and will change depending on drawbar layout and accessories fitted to your caravan. Please discuss with a member of the Cub sales team prior to purchase. Each Cub Camper is weighed on completion of build and a precise written weigh bridge certificate is then provided.

*Dealer delivery fees may apply

Please note that all images displayed on this page are for illustrative purposes only and may include optional equipment and features. Please confirm final specifications and features with an authorised Cub Campers showroom prior to purchase.



For more info, including photos, visit cubcampers.com.au